

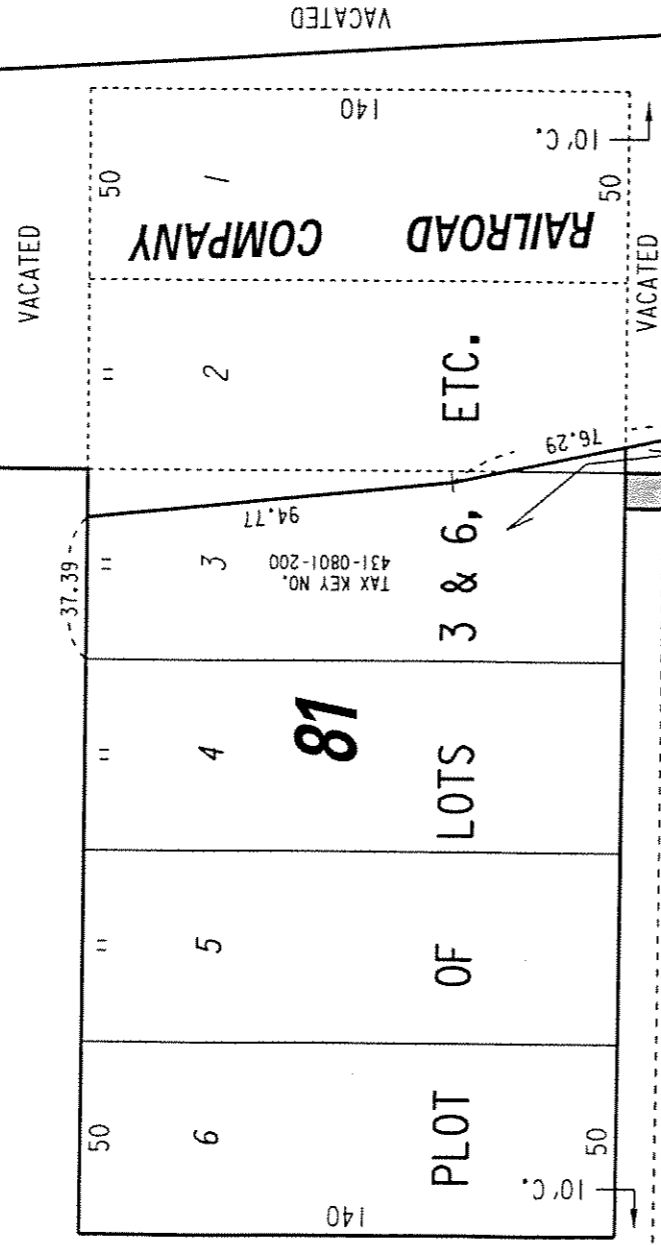
431

S.E. 1/4 SEC. 32, T.7N., R.22E.

E. Mineral

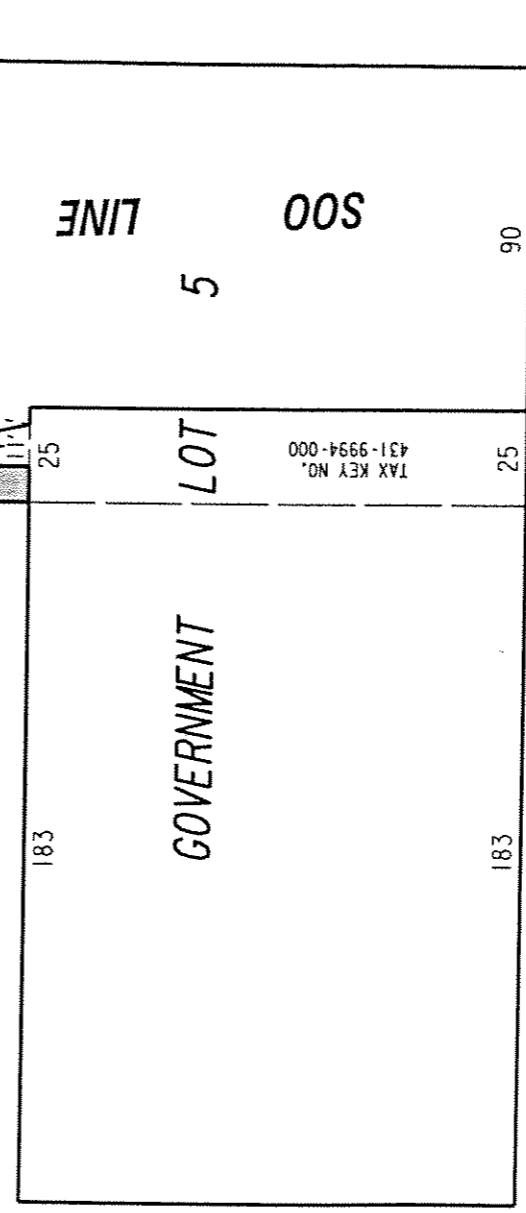
(76' R.O.W.)

St.



75 **St.**

73 **S. Barclay**



E. Washington

(76' R.O.W.)

St.

PORTION OF PUBLIC ALLEY PROPOSED TO BE VACATED

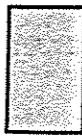


EXHIBIT "A"
FILE NO. 040846
INFRASTRUCTURE SERVICES DIVISION

MILWAUKEE, WISCONSIN

ASSIGNED TO: W.E. FUCHS
 CH'K'D. BY: W.E. FUCHS
 DRAWN BY: W.E.F.
 DATE: OCT. 21, 2004
 PROJECT/GRANT NO.: WK52337200
 SCALE: 1" = 50'
 APPROVED BY:

maria kinschke
 CENTRAL DRAFTING & RECORDS MANAGER

John J. Gaudin
 CIVIL ENGINEER