

# Accessible Entrance Addition

at

## St. Anthony Roman Catholic Church

9th and Mitchell Streets, Milwaukee, WI  
Historic Preservation Submittal

### Project Location Map



### Drawing Index

- T0 PROJECT LOCATION  
DRAWING INDEX
- A0 SITE / KEY PLAN
- A1 BUILDING ELEVATION
- A1a PHOTOS
- A2 PLAN AND ELEVATIONS



**KonText Architects, LLC**  
Commercial Government Consulting

404 West Main Street  
Sun Prairie, WI 53590

Voice: 608.825.0094 - Fax: 866.926.9351  
Web Site: [www.KonTextArch.com](http://www.KonTextArch.com)

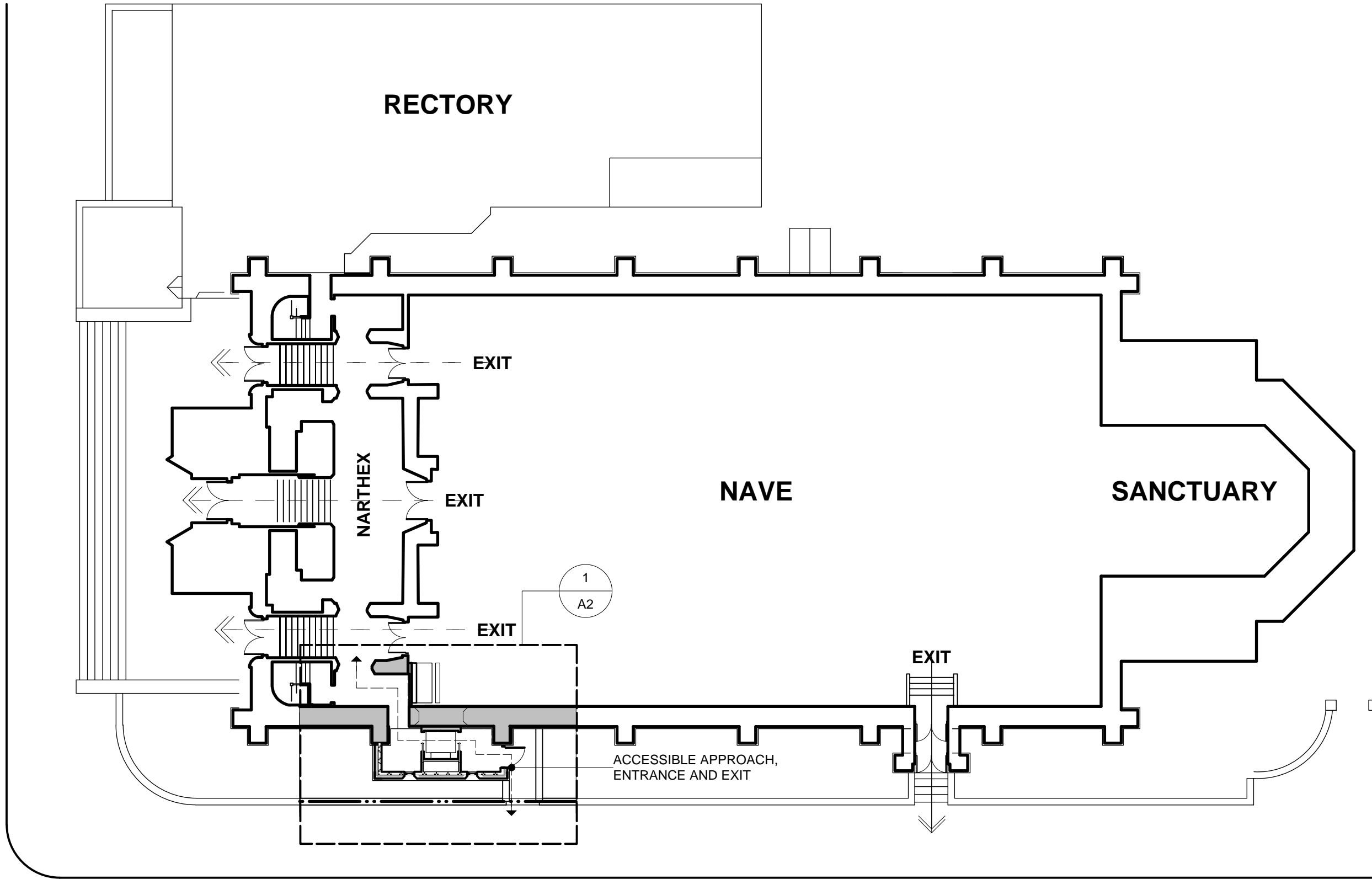
REVISIONS		
NO	DATE	REMARKS
4/20/2012		Historic Preservation Submittal
5/04/2012		Preservation Submittal (REV)

PROJECT NAME:  
**Accessible Entrance Addition**  
at  
**St. Anthony**  
**Roman Catholic Church**  
1711 S. 9th Street, Milwaukee, WI

DRAWING NAME:  
**Title Sheet**

JOB NO.: 1205	SHEET: <b>T0</b>
DATE: 04/20/2012	OF:
DR BY: KT	CH BY:

9TH STREET



MITCHELL STREET

1 KEY PLAN  
 A0 Scale: 1/16" = 1'-0"

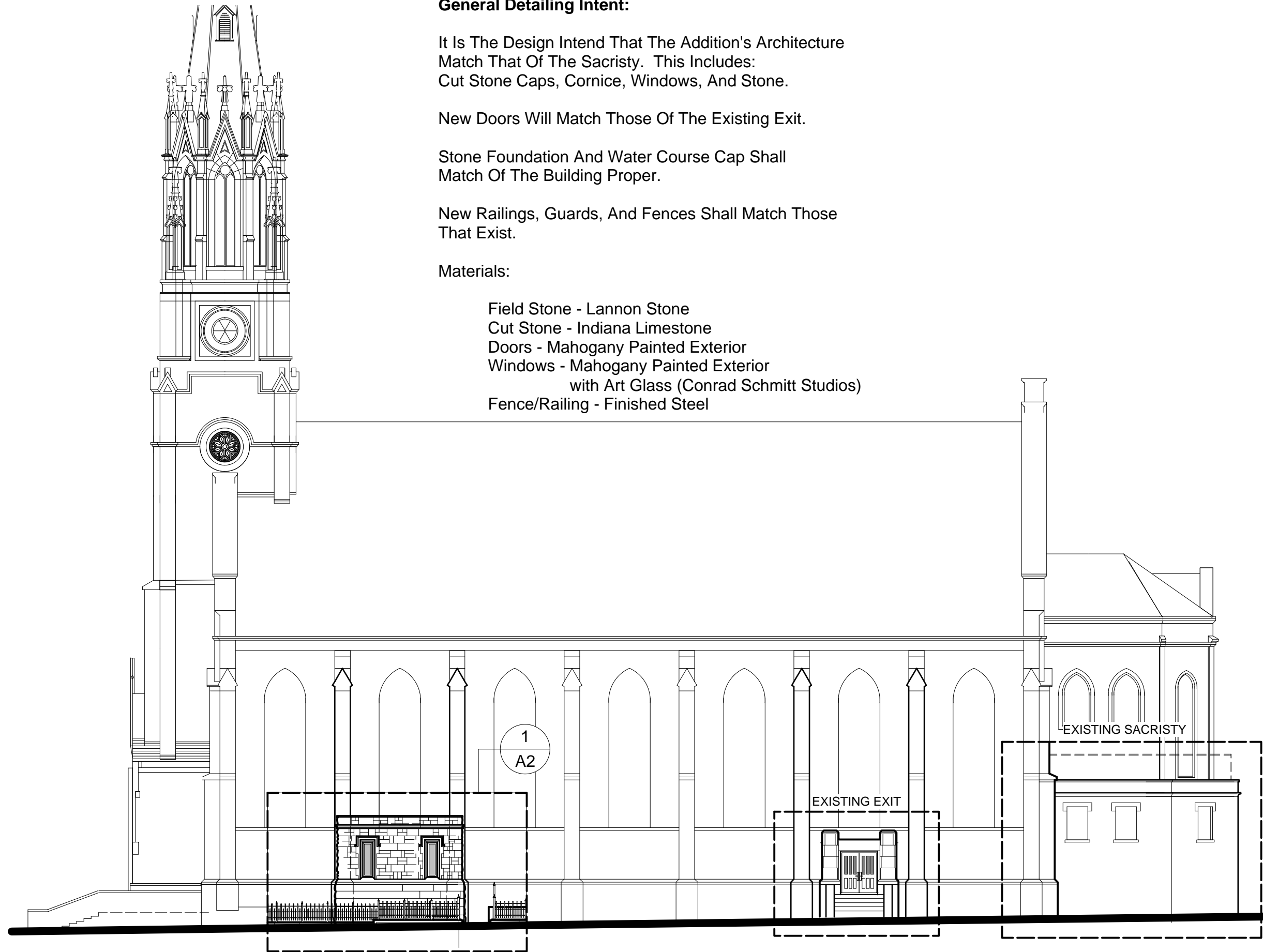
**KonText Architects, LLC**  
 Commercial Government Consulting  
 404 West Main Street  
 Sun Prairie, WI 53590  
 Voice: 608.825.0094 - Fax: 866.926.9351  
 Web Site: [www.KonTextArch.com](http://www.KonTextArch.com)

REVISIONS		
NO	DATE	REMARKS
4/20/2012		Historic Preservation Submittal
5/04/2012		Preservation Submittal (REV)

PROJECT NAME:  
**Accessible Entrance Addition**  
*at*  
**St. Anthony**  
**Roman Catholic Church**  
 1711 S. 9th Street, Milwaukee, WI

DRAWING NAME:  
**Title Sheet**

JOB NO.: 1205	SHEET:
DATE: 04/20/2012	<b>A0</b>
DR BY: KT	
CH BY:	



**General Detailing Intent:**

It Is The Design Intent That The Addition's Architecture Match That Of The Sacristy. This Includes:  
Cut Stone Caps, Cornice, Windows, And Stone.

New Doors Will Match Those Of The Existing Exit.

Stone Foundation And Water Course Cap Shall Match Of The Building Proper.

New Railings, Guards, And Fences Shall Match Those That Exist.

**Materials:**

- Field Stone - Lannon Stone
- Cut Stone - Indiana Limestone
- Doors - Mahogany Painted Exterior
- Windows - Mahogany Painted Exterior  
with Art Glass (Conrad Schmitt Studios)
- Fence/Railing - Finished Steel

1 North Building Elevation  
A1 Scale: 1/16" = 1'-0"

**KonText Architects, LLC**  
Commercial Government Consulting

404 West Main Street  
Sun Prairie, WI 53590

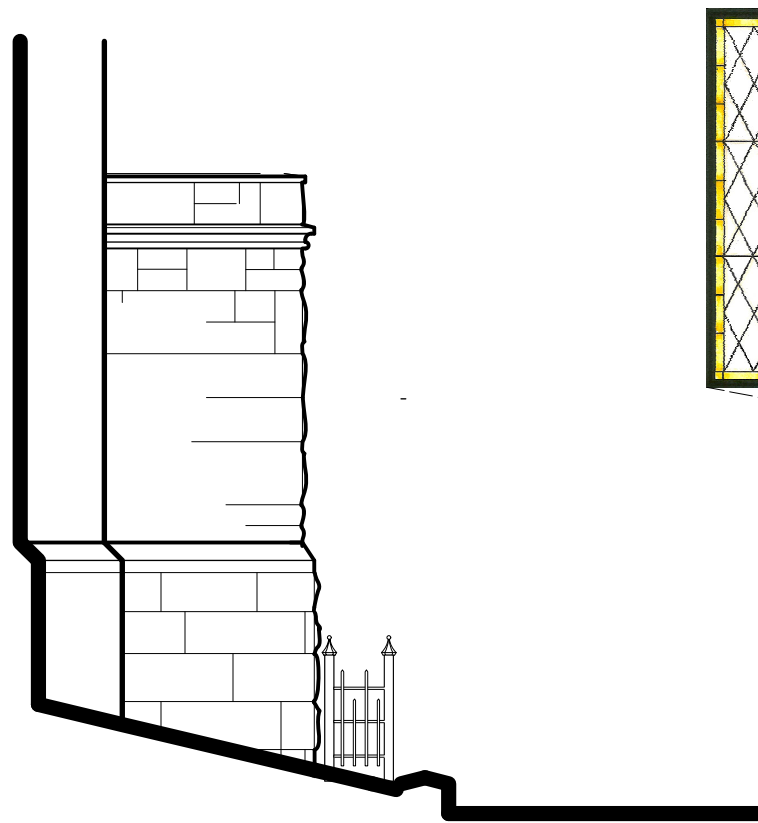
Voice: 608.825.0094 - Fax: 866.926.9351  
Web Site: [www.KonTextArch.com](http://www.KonTextArch.com)

REVISIONS		
NO	DATE	REMARKS
4/20/2012		Historic Preservation Submittal
5/04/2012		Preservation Submittal (REV)

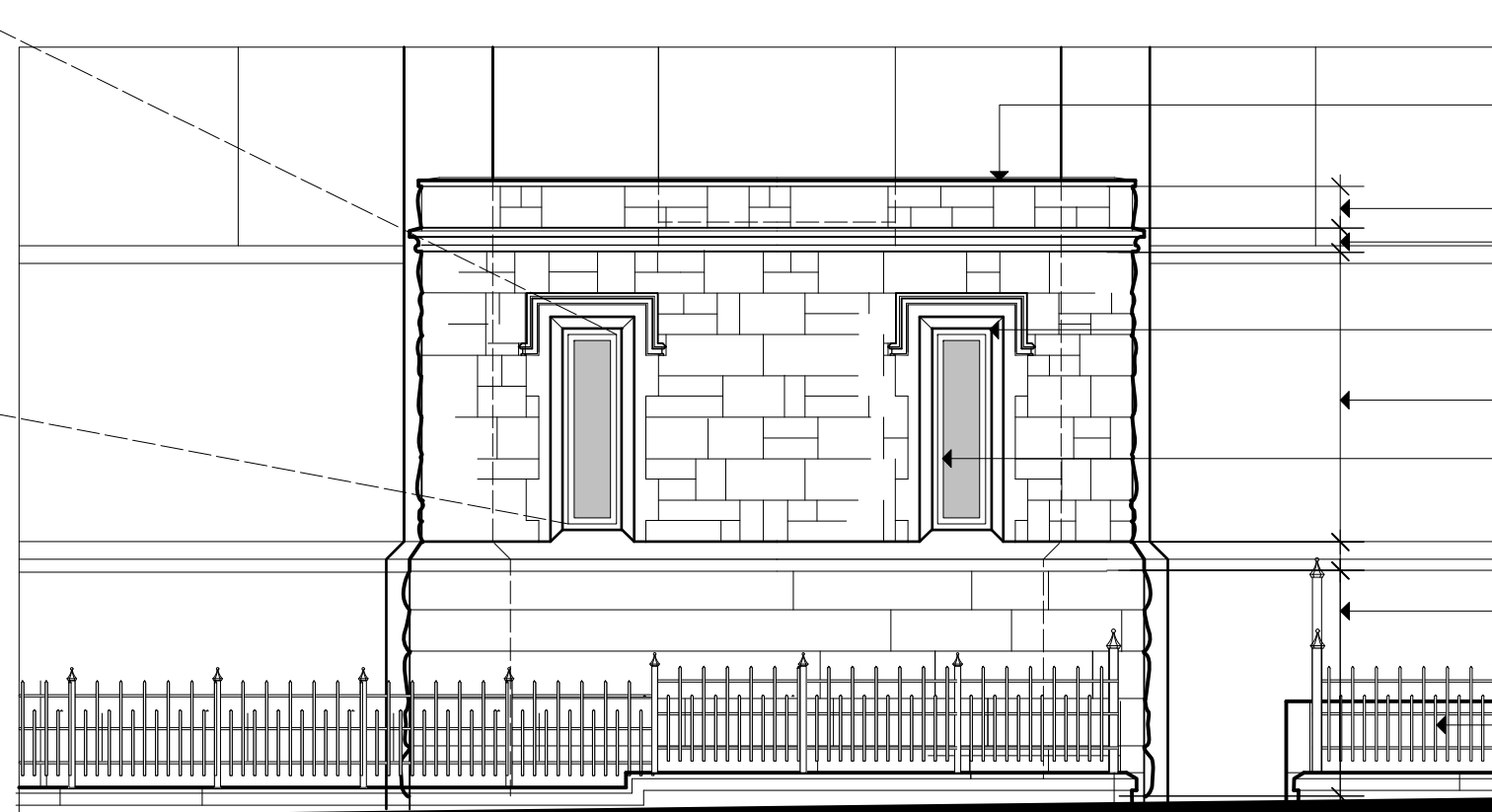
PROJECT NAME:  
**Accessible Entrance Addition**  
at  
**St. Anthony**  
**Roman Catholic Church**  
1711 S. 9th Street, Milwaukee, WI

DRAWING NAME:  
**North Building Elevation**

JOB NO.: 1205	SHEET: <b>A1</b>
DATE: 04/20/2012	OF:
DR BY: KT	CH BY: OF:



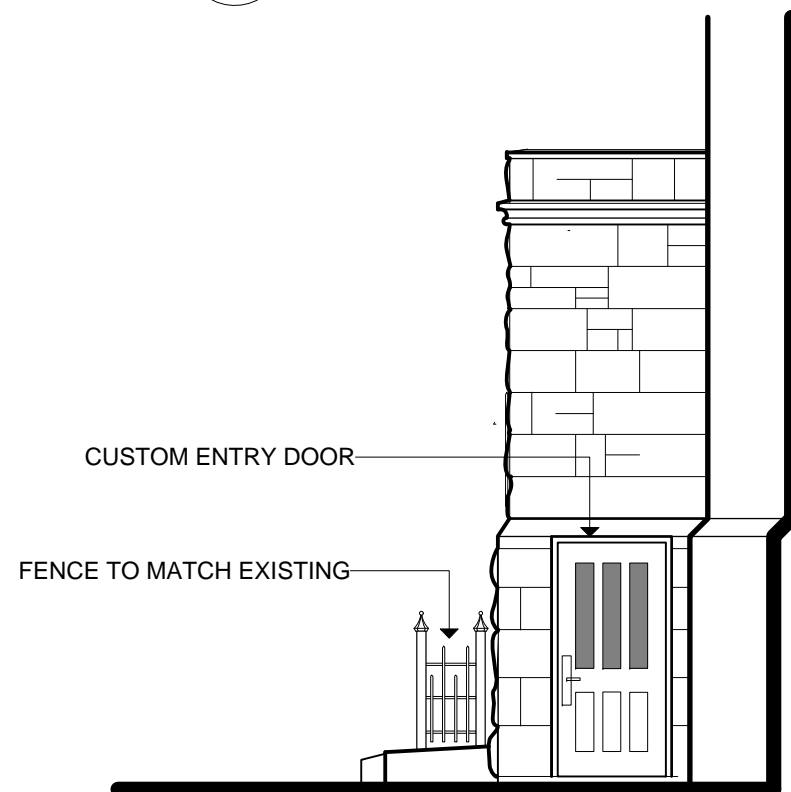
4 East Elevation  
A2 Scale: 3/16" = 1'-0"



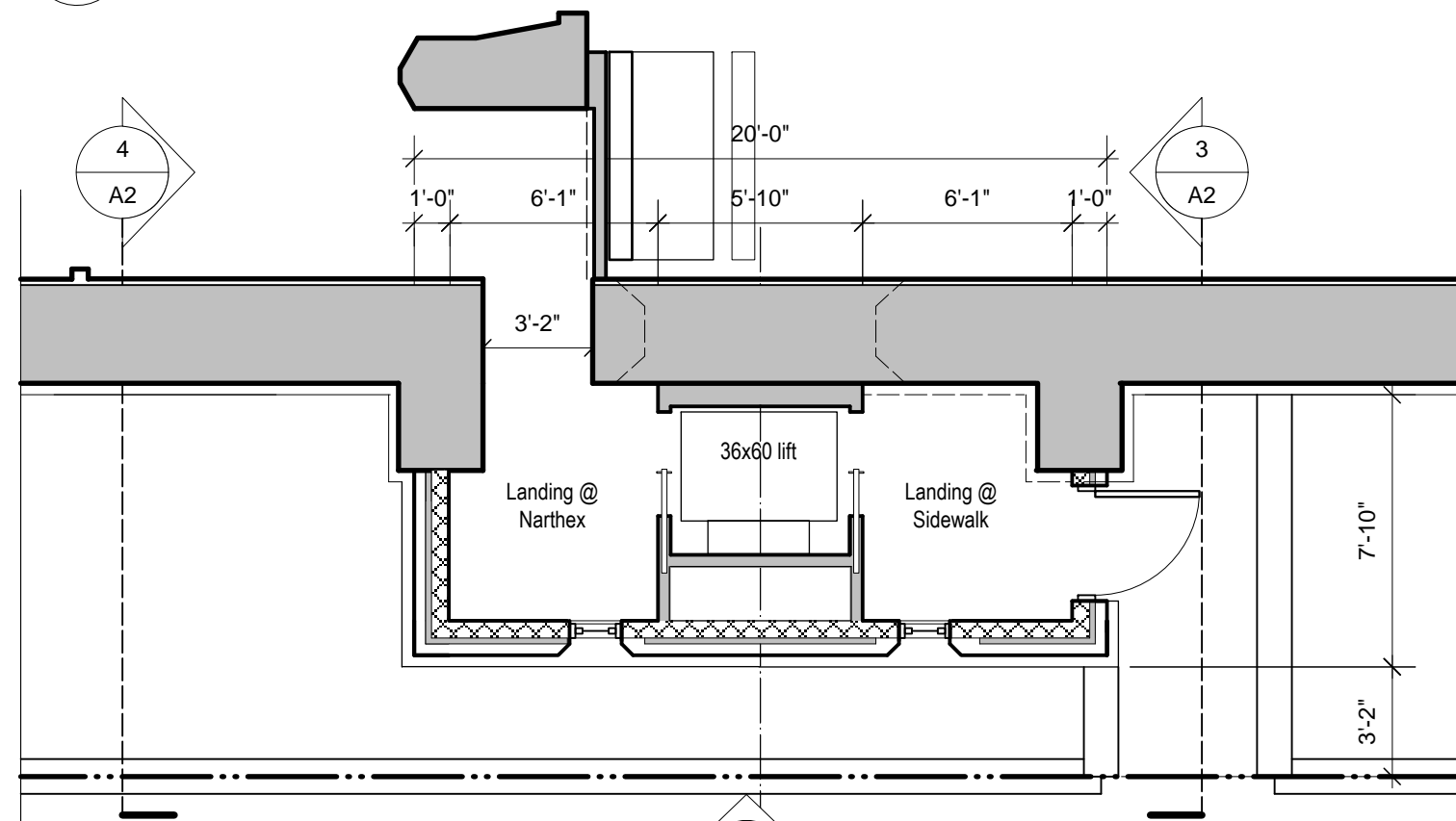
2 North Elevation  
A2 Scale: 3/16" = 1'-0"

- LIMESTONE CAP
- STONE VENEER - ASHLAR PATTERN
- CUT LIMESTONE CORNICE
- CUT STONE WINDOW JAMBS, SILL AND LINTEL
- STONE VENEER - ASHLAR PATTERN
- CUSTOM ART-GLASS WINDOW
- CUT LIMESTONE WATER COURSE
- STONE VENEER - IRREGULAR RUNNING BOND PATTERN
- MODIFY EXISTING FENCE

LANDING AND STEPS



3 West Elevation  
A2 Scale: 3/16" = 1'-0"



1 Site / Floor Plan  
A2 Scale: 3/16" = 1'-0"

2 A2

**KonText Architects, LLC**  
Commercial Government Consulting

404 West Main Street  
Sun Prairie, WI 53590

Voice: 608.825.0094 - Fax: 866.926.9351  
Web Site: [www.KonTextArch.com](http://www.KonTextArch.com)

REVISIONS		
NO	DATE	REMARKS
4	4/20/2012	Historic Preservation Submittal
5	5/04/2012	Preservation Submittal (REV)

PROJECT NAME:  
**Accessible Entrance Addition**  
at  
**St. Anthony**  
**Roman Catholic Church**  
1711 S. 9th Street, Milwaukee, WI

DRAWING NAME:  
**Plan and Elevations**

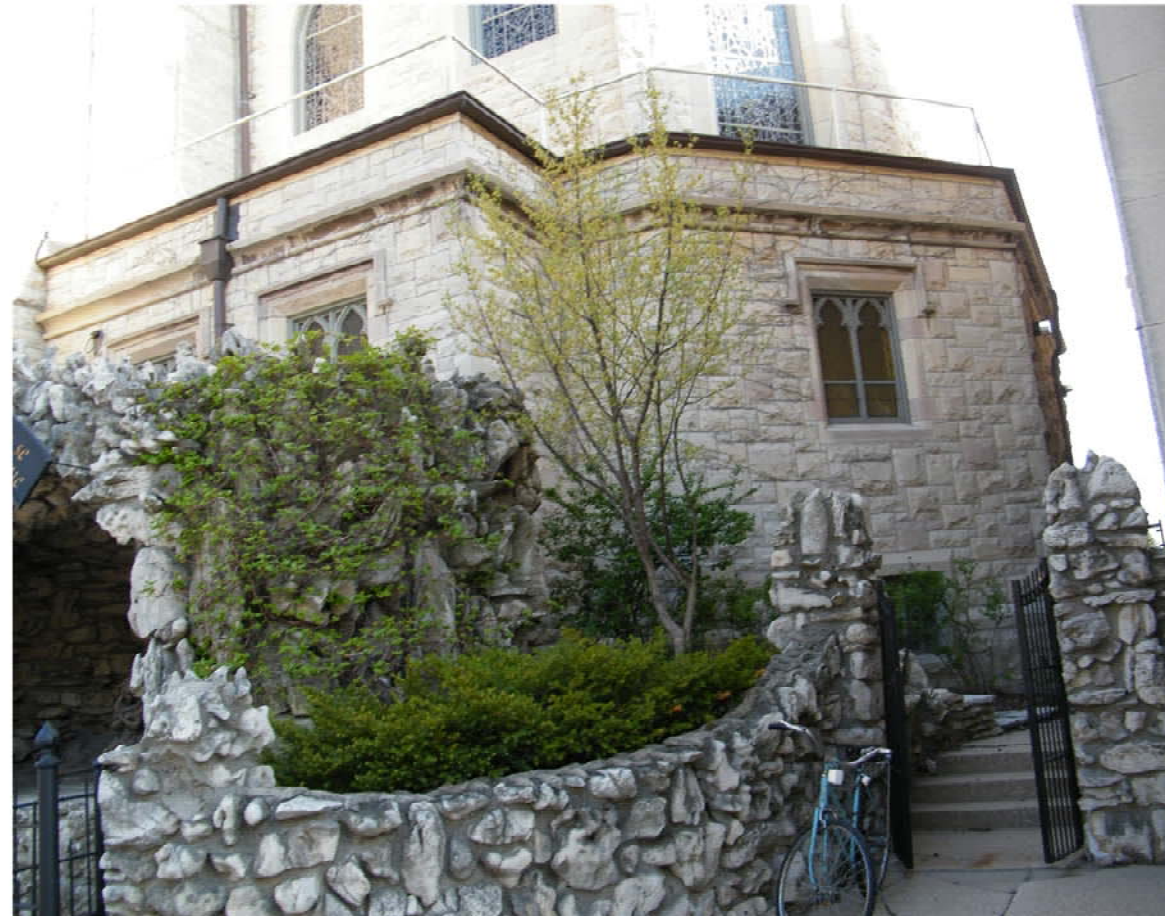
JOB NO.: 1205	SHEET: <b>A2</b>
DATE: 04/20/2012	OF:
DR BY: KT	CH BY:




**LOCATION OF ACCESSIBLE ADDITION**



**EXISTING MITCHELL STREET EXIT**



**EXISTING SACRISTY ARCHITECTURE**

<b>KonText Architects, LLC</b> Commercial Government Consulting  404 West Main Street Sun Prairie, WI 53590 Voice: 608.825.0094 - Fax: 866.926.9351 Web Site: <a href="http://www.KonTextArch.com">www.KonTextArch.com</a>		
<b>REVISIONS</b>		
NO	DATE	REMARKS
	4/20/2012	Historic Preservation Submittal
	5/04/2012	Preservation Submittal (REV)
PROJECT NAME:		<b>Accessible Entrance Addition</b> <i>at</i> <b>St. Anthony</b> <b>Roman Catholic Church</b> 1711 S. 9th Street, Milwaukee, WI
DRAWING NAME:		<b>PHOTOS</b>
JOB NO.:	SHEET:	
1205	<b>A1a</b>	
DATE:		
04/20/2012	DR BY:	CH BY:
KT		
	OF:	