



# Certificate of Appropriateness

Milwaukee Historic Preservation Commission/841 N. Broadway Room B-1/Milwaukee, WI 53202/phone 414-286-5712/414-286-5722

**Property**

1015 N. 9TH ST. St. Benedict the Moor Roman Catholic Church  
An Individually Designated Historic Property

**Description of work**

Applicant wants to replace basement wood windows with new aluminum clad windows that will match original units in the existing masonry openings. Current sash are original to the construction of the building and no longer fit tightly in their frames. They are painted, likely with lead paint and have security grates and are glazed with several types of and colors of patterned glass. The grates were installed to protect the window when a playground was just outside.

The new windows will include vision glass, window screens and operate to provide natural ventilation when wanted. The area houses the Community Meal space. By removing the pattern glass and security grates the applicant wants to achieve a less institutional look to the building.

In summary the existing openings will be retained, the configurations of panes, surrounds and sills will be replicated, and no other openings will be made for fenestration. This application is for the lower story windows and not the decorative windows on the main floor.

**Date issued**

11/8/2022

PTS ID 115332 COA New basement windows

In accordance with the provisions of Section 320-21 (11) and (12) of the Milwaukee Code of Ordinances, the Milwaukee Historic Preservation Commission has issued a certificate of appropriateness for the work listed above. The work was found to be consistent with preservation guidelines. The following conditions apply to this certificate of appropriateness:

**CONDITIONS** Marvin Ultimate Series G-2 Single Hung windows will be used, aluminum clad wood. The only change would be that the windows will be single and not double hung windows and have insulated glass. Other features include inner and outer applied muntins with interior spacer bars and Low-E vision glass. **NOTE: The spacer bars between the glass must be black in color.**

A few windows have had modification due to exhaust ductwork or piping serving mechanical equipment and new windows at these locations will be slightly modified to reflect those conditions. West elevation windows are generally 40-inches by 58-inches while those on the east elevation are 40-inches by 72-inches

**HP Staff will be consulted about the color of the aluminum cladding so as to be compatible with the building.**

All work must be done in a craftsman-like manner, and must be completed within one year of the date this certificate was issued. Staff must approve any changes or additions to this certificate before work begins. Work that is not completed in accordance with this certificate may be subject to correction orders or citations. If you require technical assistance, please contact Carlen Hatala of the Historic Preservation staff as follows: Phone: (414) 286-5722 or E-mail: [carlen.hatala@milwaukee.gov](mailto:carlen.hatala@milwaukee.gov) or tim askin at (414) 286-5712 or E-mail at [tim.askin@milwaukee.gov](mailto:tim.askin@milwaukee.gov) .

If permits are required, you are responsible for obtaining them from the Milwaukee Development Center. If you have questions about permit requirements, please consult the Development Center's web site, [www.milwaukee.gov/build](http://www.milwaukee.gov/build), or call (414) 286-8210.



---

City of Milwaukee Historic Preservation Staff

Copies to: Development Center, Ald. Robert Bauman

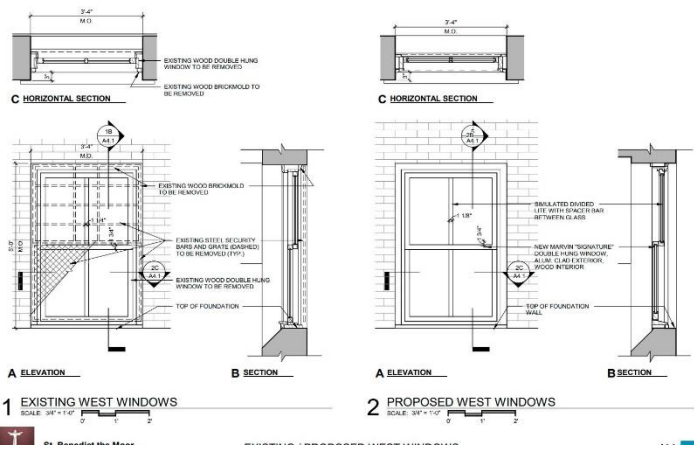


St. Benedict the Moor Roman Catholic Church





**TYPICAL WEST WINDOW**



West Windows. Existing and proposed

## INTERIOR FEATURES AND PERFORMANCE

### RICH WOOD INTERIOR

Offers beauty and warmth with six wood species and ten interior finish options.

### NARROW CHECKRAIL

Provides a sleek aesthetic at 1 1/8 inches to maximize daylight opening while maintaining historical accuracy.

### TILT WASH

Allows easy access to exterior glass for cleaning and maintenance.



### EXCLUSIVE AUTOLOCK

Activates when the sashes are closed, locking the window.

### FIRST-RATE ENERGY EFFICIENCY

Meets ENERGY STAR® standards in energy efficiency with multiple glass options for various regions, climates, and weather needs.

### SASH BALANCE SYSTEMS

Enables smooth operation at the largest sizes.

## EXTERIOR FEATURES AND PERFORMANCE

### DURABLE CLADDING

Extruded aluminum exterior cladding with an AAMA verified 2605 finish and backed by a 20-year warranty against chalking and fading.

### EXPANSIVE SIZES

Larger than 5 feet wide by 10 feet high.

### TRADITIONAL SILL BEVEL

The 14-degree bevel provides optimal water management while maintaining a classic look.

### SUPERIOR WEATHER PERFORMANCE

LC-PG50 on most sizes. Optional commercial (CW) performance and IZ3 certified coastal performance on most sizes.

### DESIGN VERSATILITY

An array of simulated divided lite patterns, interior and exterior color options, ten hardware finishes, and archtop models.

### ALUMINUM INTER-LOCK

Eliminates drafts and improves the window's overall structural integrity.



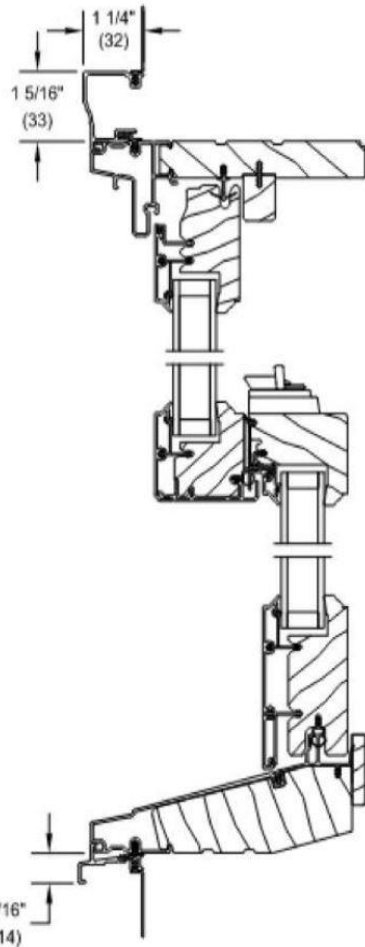
16 MARVIN SIGNATURE® COLLECTION

17

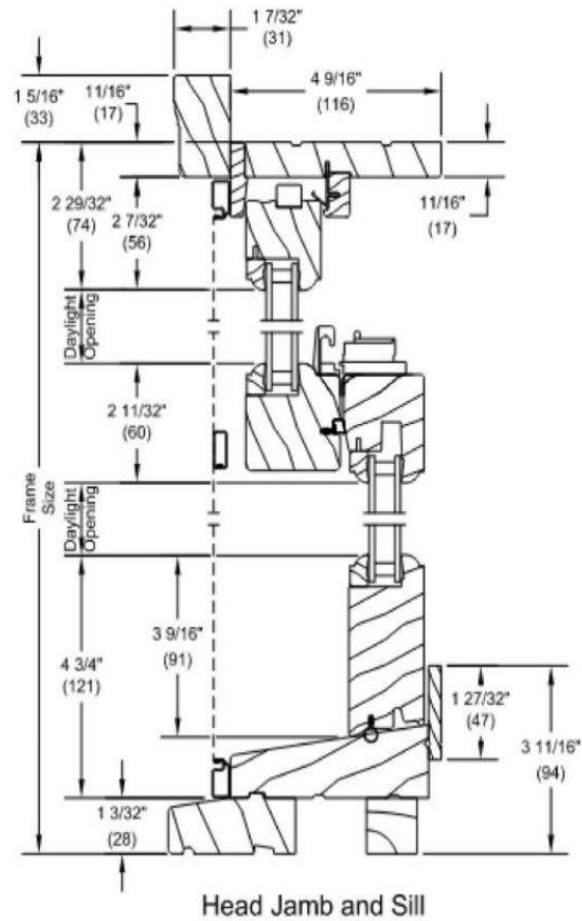
St. Benedict the Moor

NEW MARVIN CLAD WINDOW - ELEVATION

A5.1



**SECTION - MARVIN ALUMINUM CLAD WINDOW**  
 (WOOD INTERIOR / ALUM. CLAD EXTERIOR)



**SECTION - MARVIN ALL WOOD WINDOW**



**St. Benedict the Moor**  
 930 West State Street  
 Milwaukee, Wisconsin

**MARVIN WOOD / ALUM. CLAD SECTION COMPARISON**

**A5.2**  
 11/07/22 **MK**  
 ARCHT