

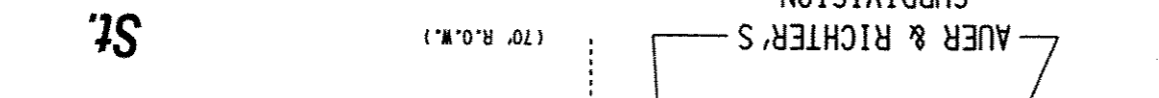
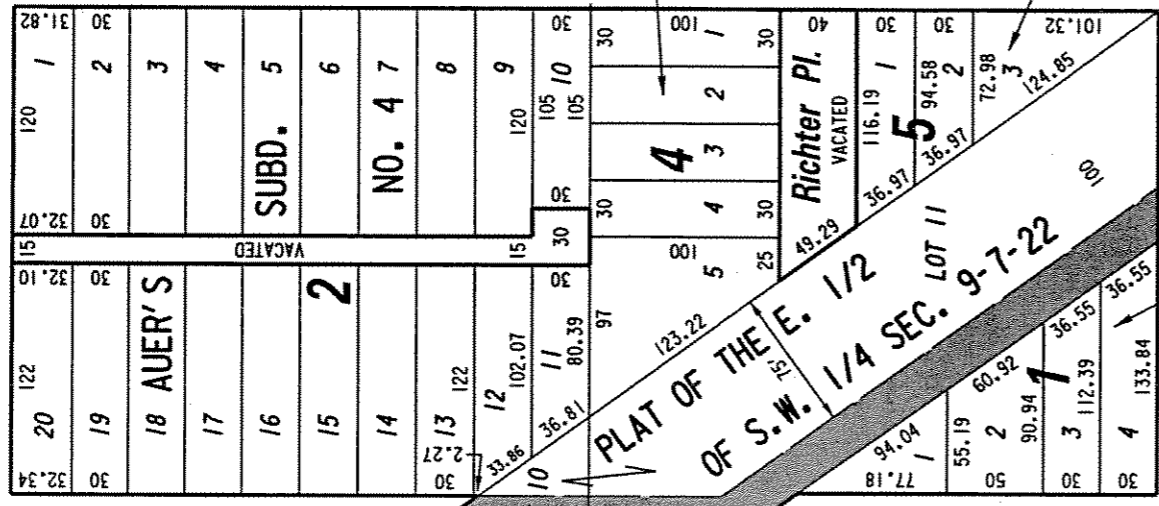
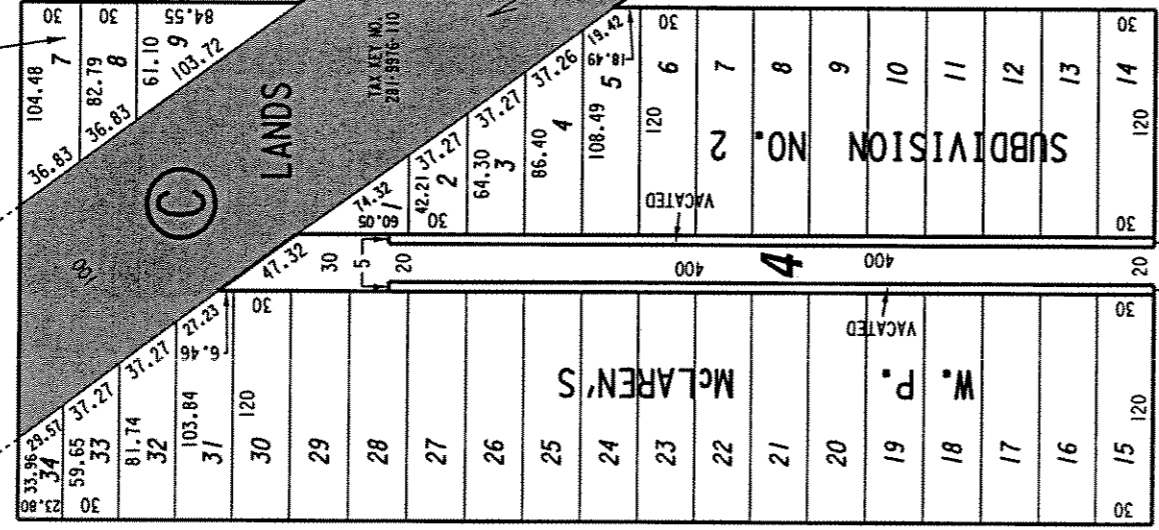
S.W. 1/4 SEC. 9, T.7N., R.22E.

BLOCK 2
C.K. REICHERT'S
SUBD. NO. 4

E. Concordia Ave.

Ave.

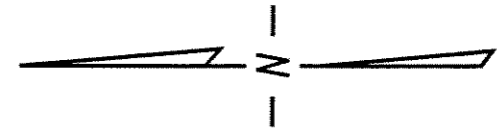
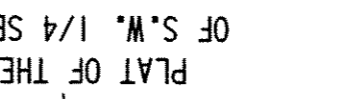
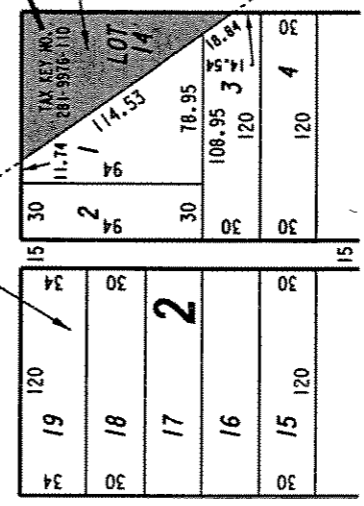
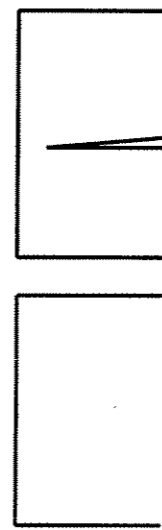
(60' R.O.W.)



E. Auer

MOAN & STRAMM'S
SUBD. NO. 1

Ave.



LANDS TO BE
ACQUIRED FOR A
RECREATIONAL CORRIDOR

(MAP 3 OF 4)

FILE NO.
INFRASTRUCTURE SERVICES DIVISION
MILWAUKEE, WISCONSIN

ASSIGNED TO: P.A. VELLA
DRAWN BY: P.A.V.
PROJECT/GRANT NO.: ST320030701
APPROVED BY:

CH'K'D. BY: W.E. FUCHS
DATE:
SCALE: 1" = 100'

PRELIMINARY MAP

