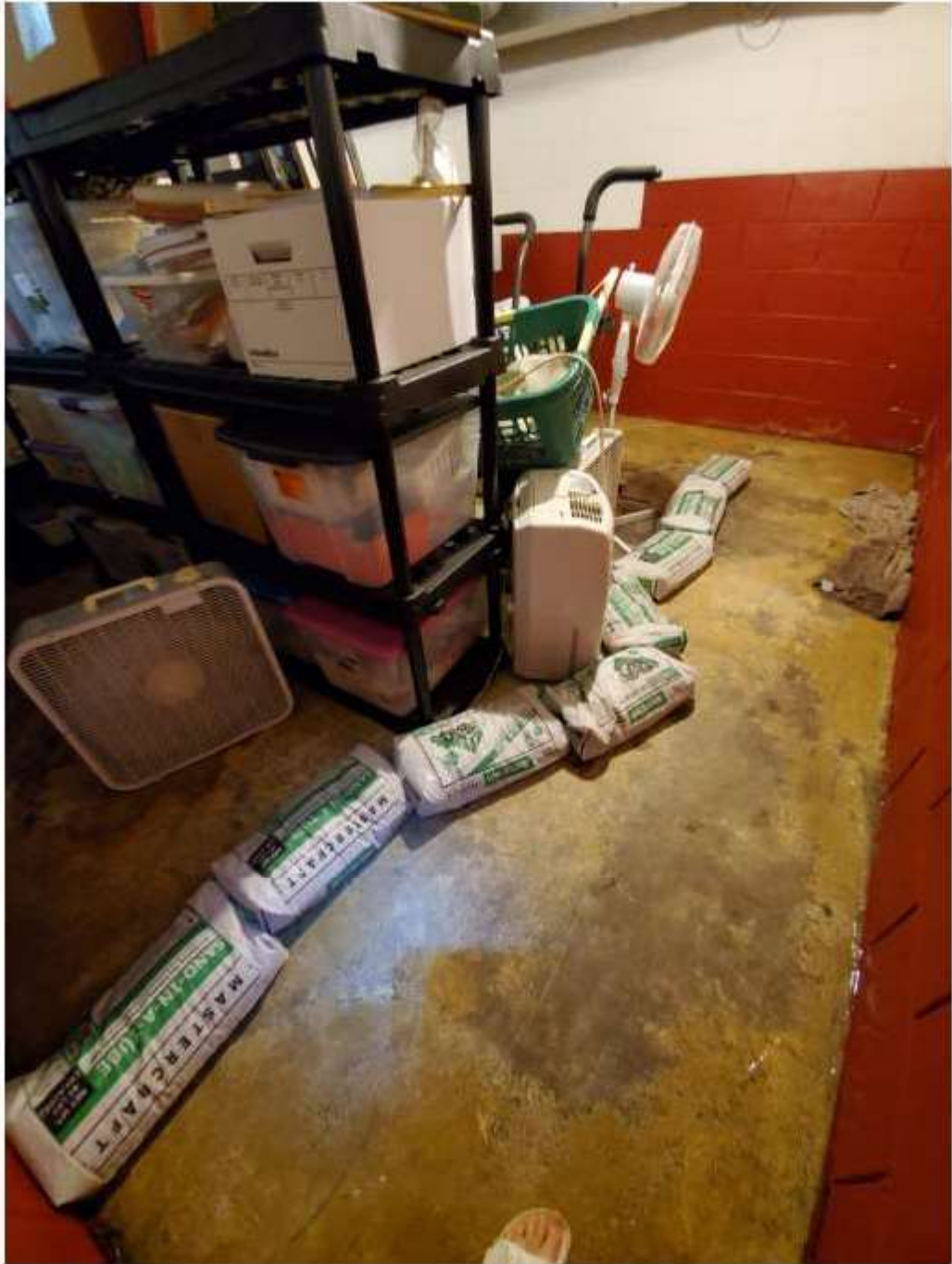




set 4: Palmer valve opened by Ever Dry 10/1/21



set 2: 9/26/21 sandbags to contain cellar water



set 2: 9/26/21 1st attempt at sandbag dam



set 2: 9/30/21 1st dig near driveway, water starting in hole



set 2: 9/28/21. new dam & towel system



set 2 9/28/21 garage receives some basement contents



set 3: 10/1/21 2nd dig at my corner



set 3: test drill holes 10/1/21 in front of house where leak found 12/3/21





set 3: site of fix after 12/3/21 my house on right



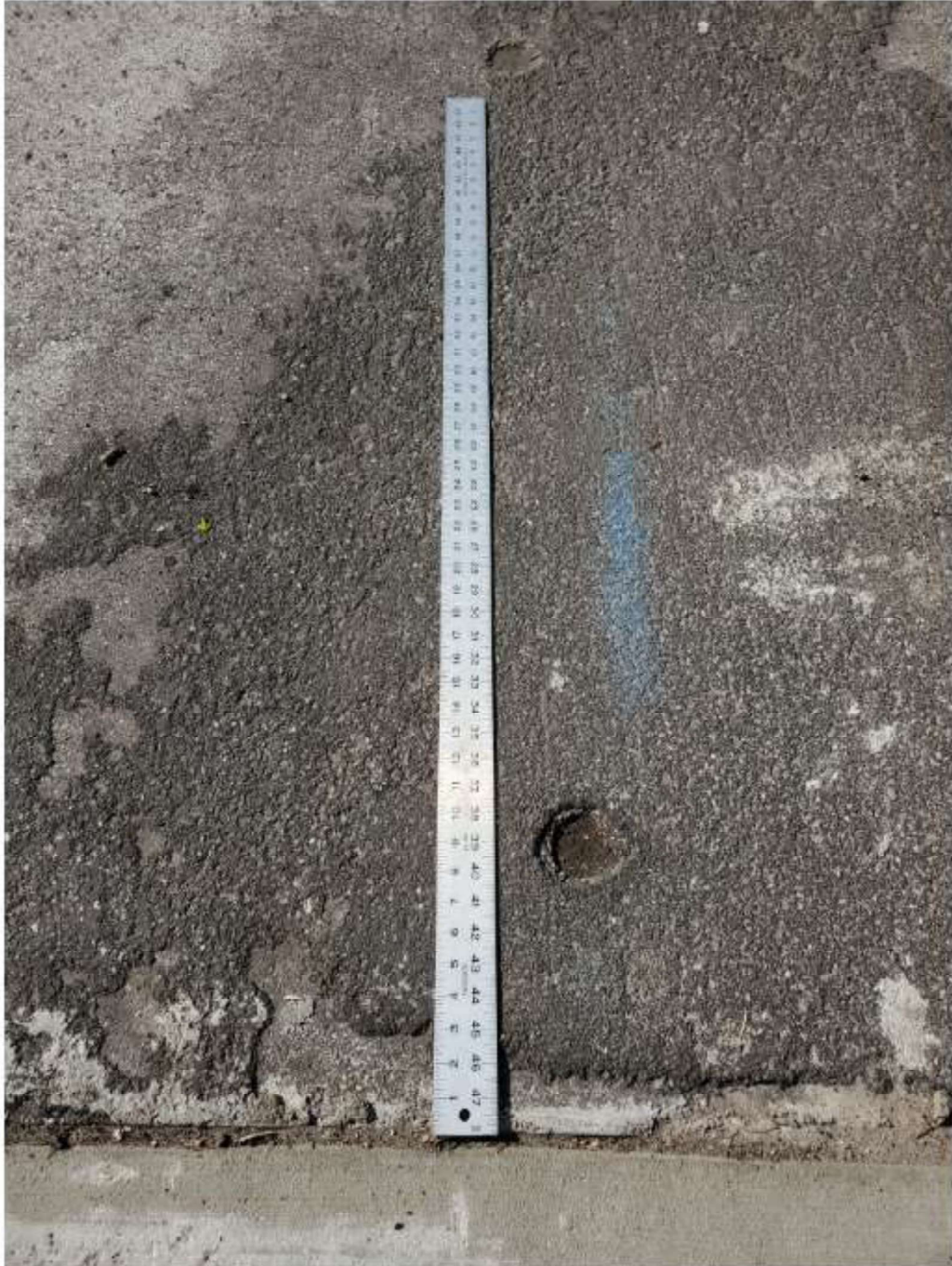
set 3: Oct 1 my corner, listening for hiss of leak through water filling up quickly



set 3 new cement at bottom where main leak fixed 12/3/21 asphalt is from previous patch



set 3 : metal yardstick on right shows about where leak was found in front of my house



set 3: test holes drilled 10/1/21 along northbound main in front of my house where leak found 12/3/21



set 3: 10/1/21 4 water mains at my corner



set 1, 9/18/21, failed caulking



set 1 9/18 vac at trickle leak





set 1 9/18/21



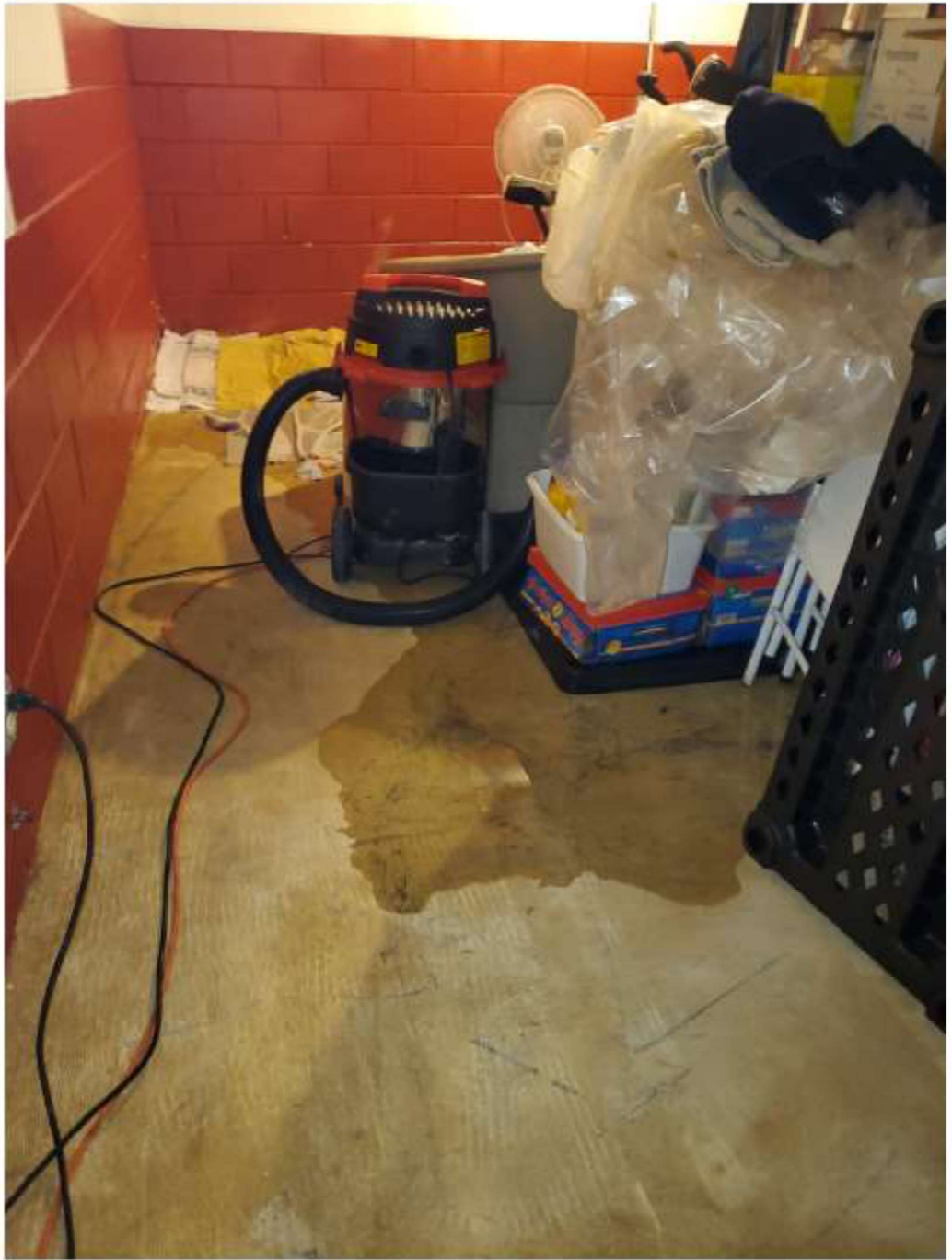
set 1: fans, dehumidifiers, towels



set 1: 9/33/21



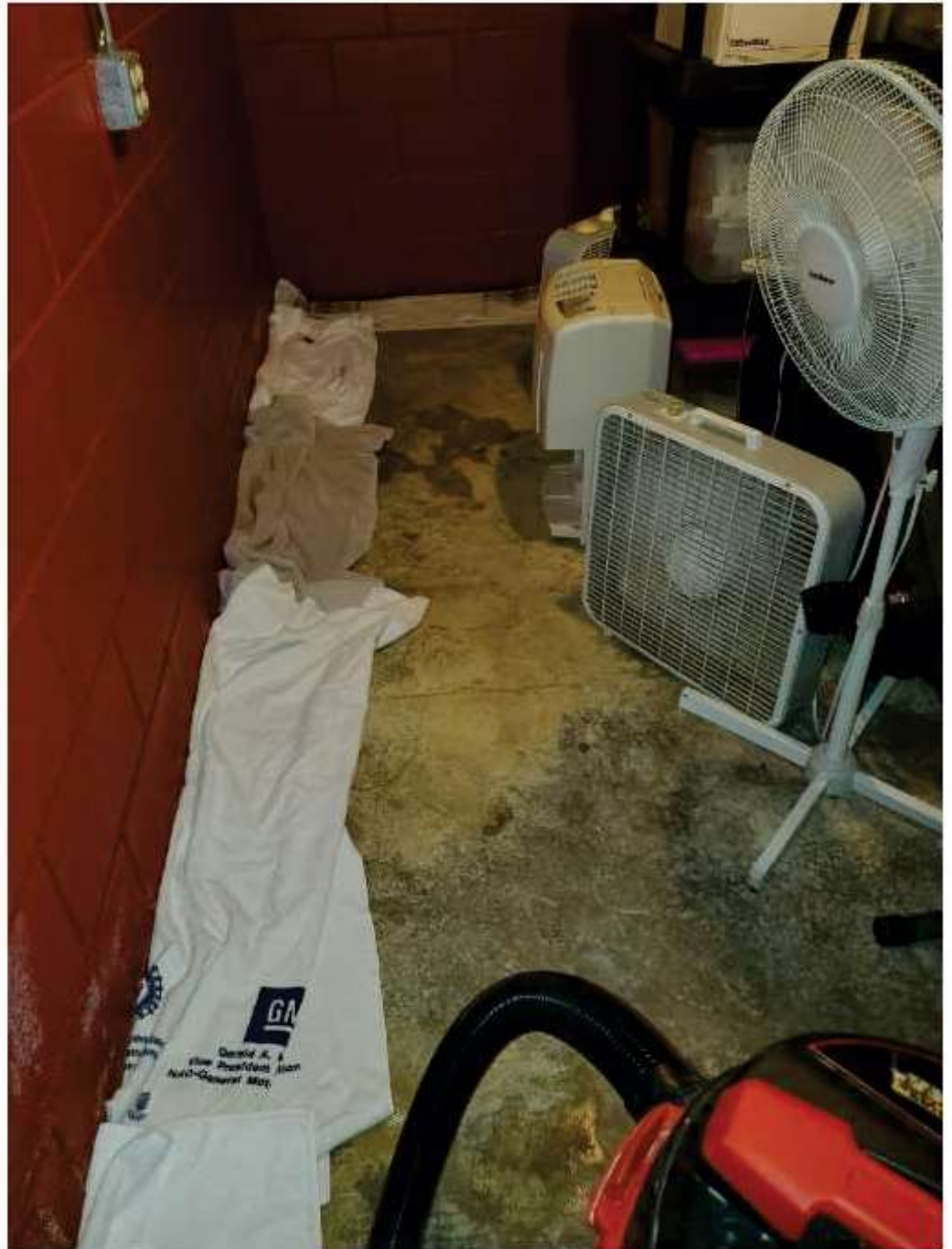
set 1: 9/23/21 wheelie to haul 50lbs of wet towels to washer/dryer



set 1: 9/23/21 puddles breaking through towels



set 1; 9/22/23 entry to cellar



set 1: 9/21/21 towels to slow puddles



set 1: 9/21/21 southeast corner

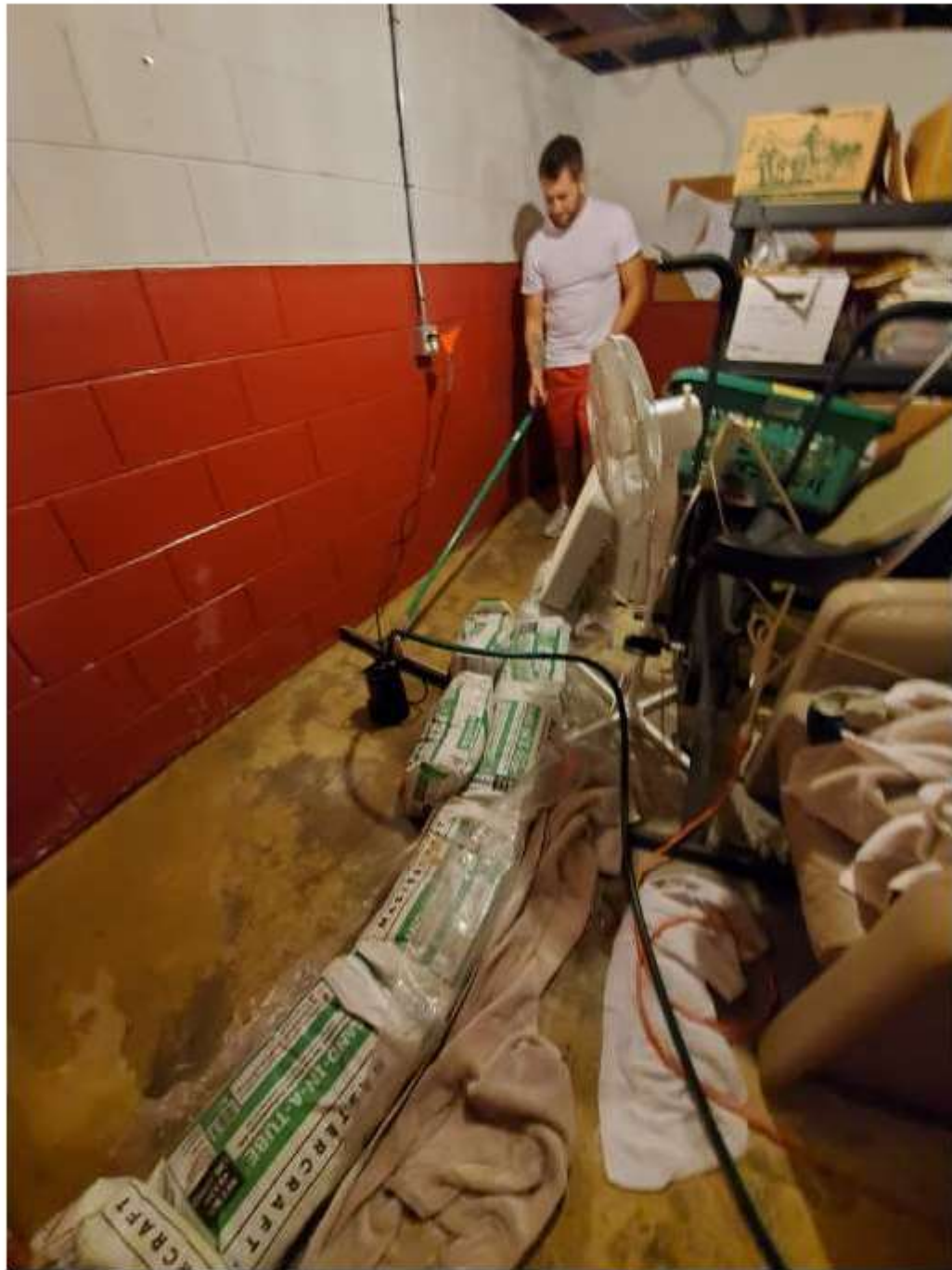




set 1: 9/21/21 son from Chicago up to help



set 1: 9/21/21 laundry room



set 2: 9/26/21 son trying pump