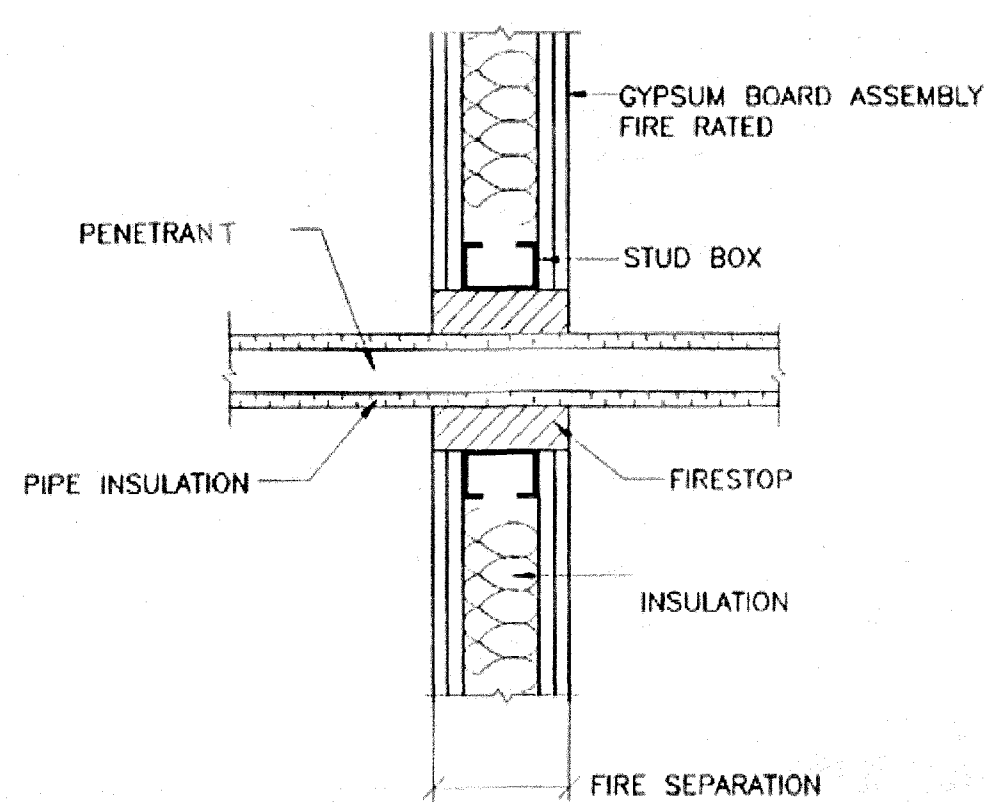
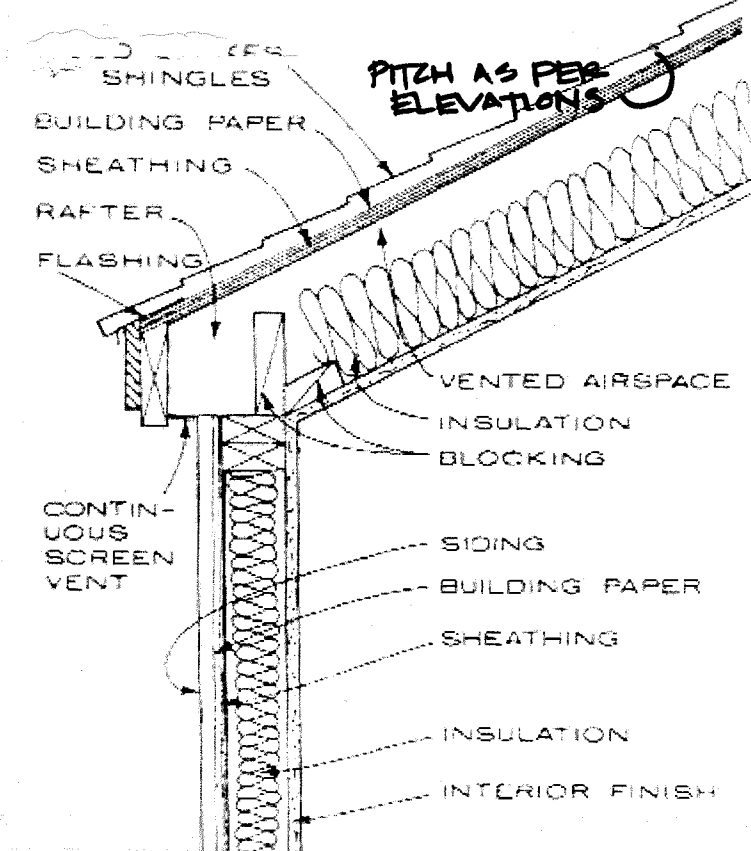


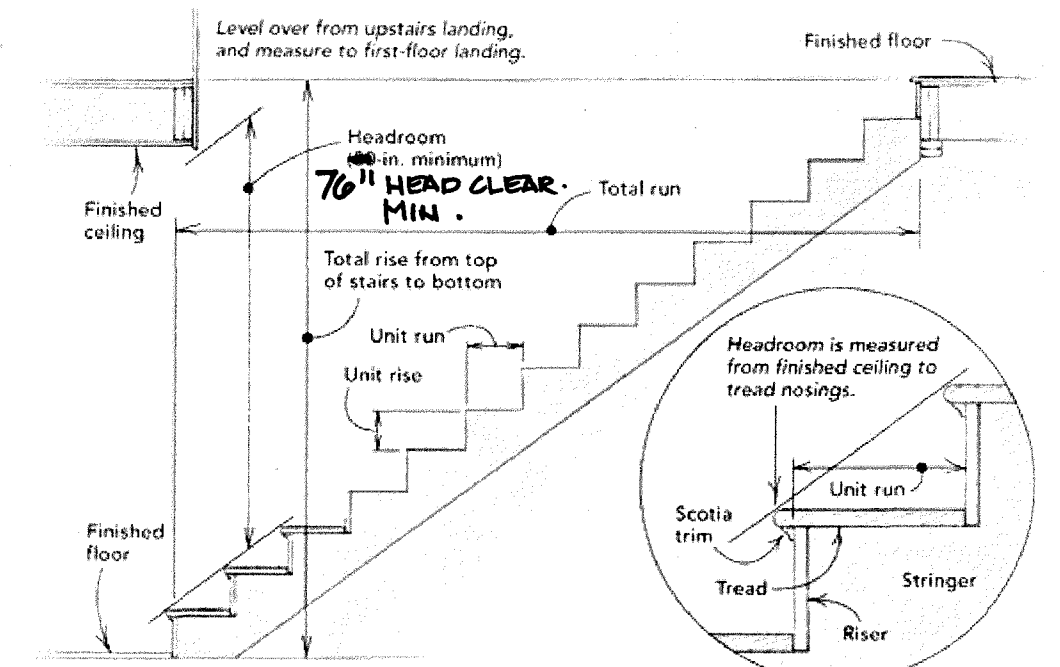
(H) ALT. BASEMENT INTERIOR DRAIN TILE DETAIL (IF REQ'D.)



(G) FIRE SEPARATION DETAIL DET. HOUSE & GARAGE, TYP.



(E) ROOF/EAVE/WALL DETAIL



Rise calculations

102% (total rise of stair)

+ 7 (approximate riser height)

14+ (number of risers)

102% (total rise of stair)

+ 14 (number of risers)

7% (exact riser height)

Run calculations

(2 x rise) + (1 x run) = 25 ± 1

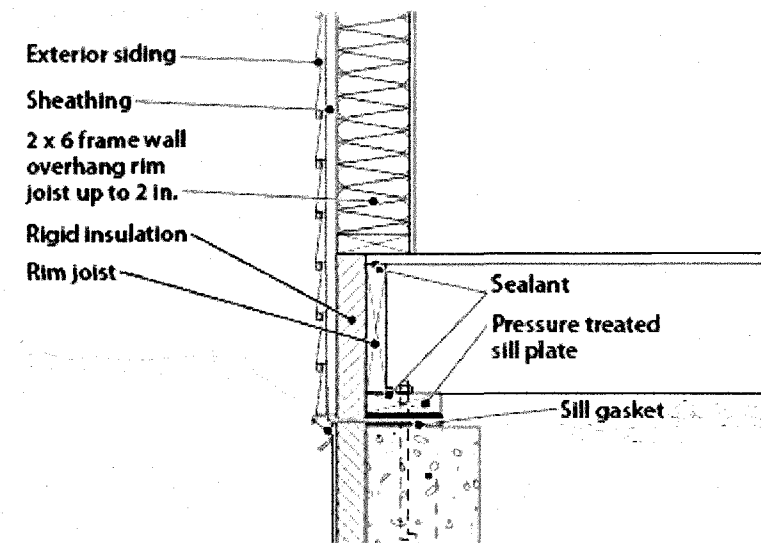
14% + (1 x run) = 25 ± 1

25 - 14% (2 x rise) = 10% ± 1

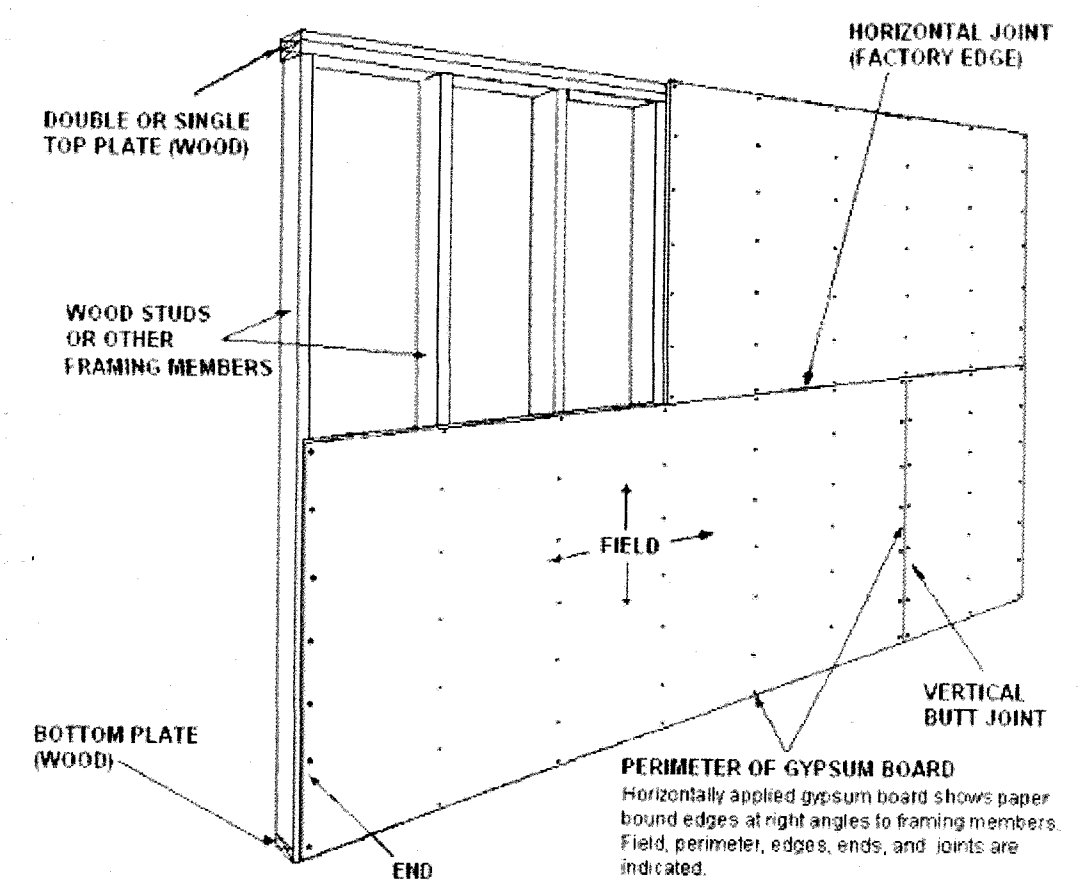
(Run can range from 9% to 11%)

13 unit runs @ 10% = 131% total run

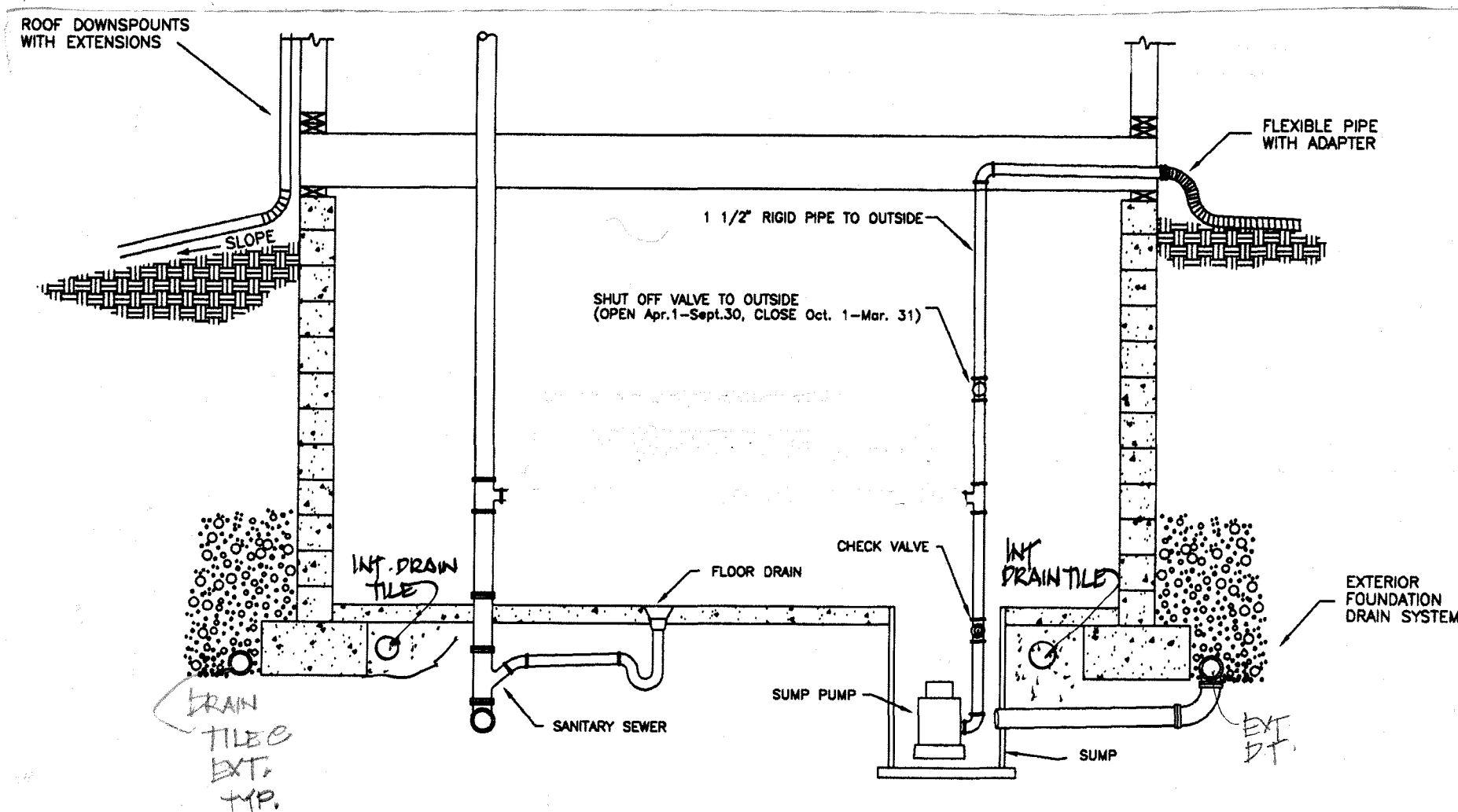
(B) STAIR TREAD, RISER, RUN DETAIL



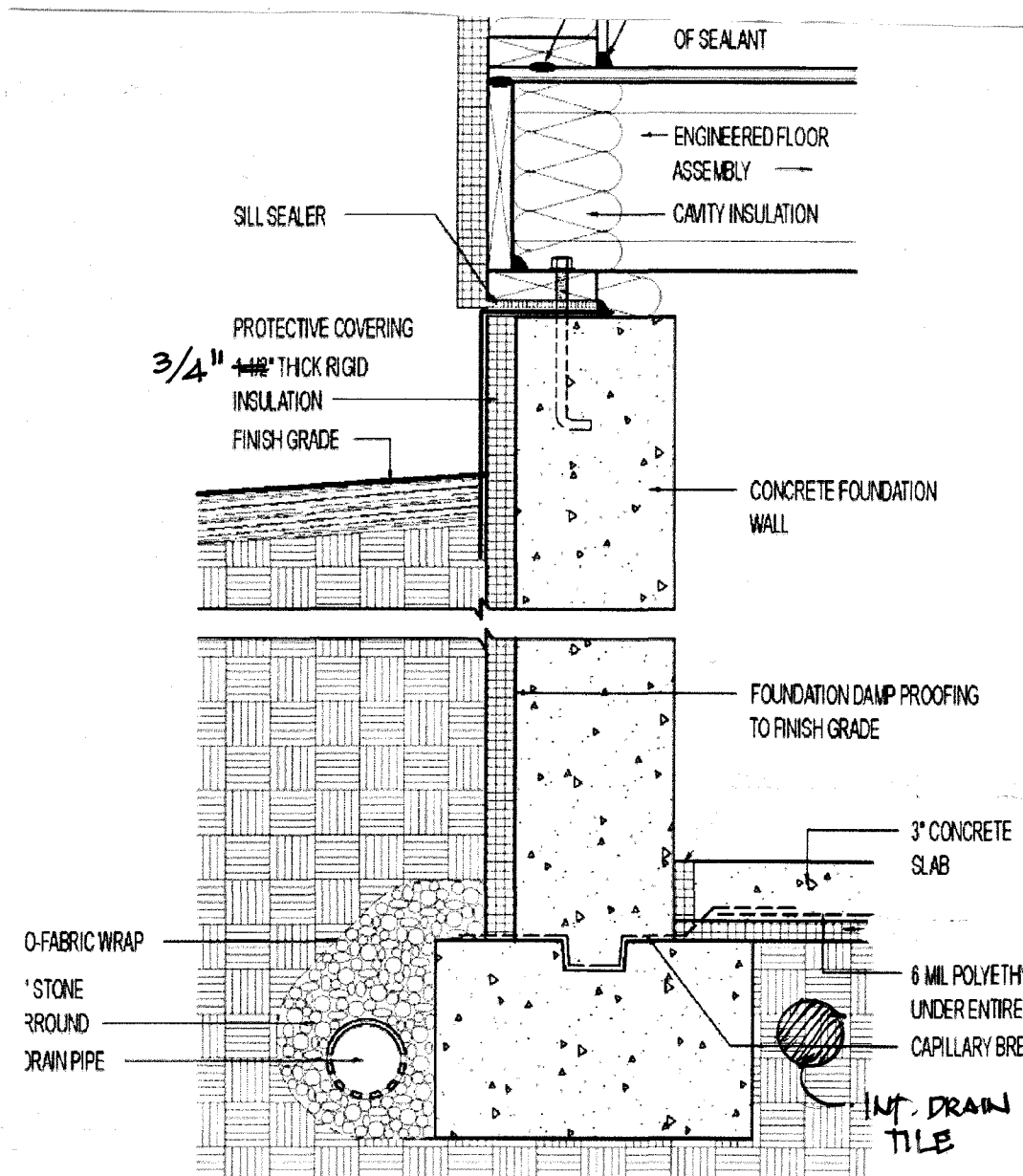
(D) ALT. BASEMENT WALL DETAIL



(A) TYPICAL DRYWALL DETAIL



(F) 2-WAY SUMP PUMP DETAIL WITH SEASONAL WAIVER



(C) TYP. EXT. WALL BASEMENT DETAIL

SCALE:	APPROVED BY:	DRAWN BY:
DATE:		REVISED:
DETAILS		
		DRAWING NUMBER
		AP