



# Certificate of Appropriateness

Milwaukee Historic Preservation Commission/200 E. Wells Street/Milwaukee, WI 53202/phone 414-286-5712/fax 414-286-3004

**Property** 2633 N. LAKE DR. North Point North HD  
**Description of work** Backyard landscaping consisting of: 1. remove all grass and plant new; 2. Remove brick patio; 3. Remove two sick Norway Maple trees; 4. Create bluestone patio with limestone firepit capped with bluestone; 5. Replace concrete steps to 4-season room with limestone stoop; 6. Pave some dirt areas with limestone pavers; 7. Create planting beds for perennials and bushes; 8. Plant red maple tree.  
**Date issued** 8/21/2017 PTS ID 114351 COA: rear landscaping

In accordance with the provisions of Section 320-21 (11) and (12) of the Milwaukee Code of Ordinances, the Milwaukee Historic Preservation Commission has issued a certificate of appropriateness for the work listed above. The work was found to be consistent with preservation guidelines. The following conditions apply to this certificate of appropriateness: N/A

All work must be done in a craftsman-like manner, and must be completed within one year of the date this certificate was issued. Staff must approve any changes or additions to this certificate before work begins. Work that is not completed in accordance with this certificate may be subject to correction orders or citations. If you require technical assistance, please contact Historic Preservation staff as follows: Phone: (414) 286-5712 E-mail: HPC@milwaukee.gov.

If permits are required, you are responsible for obtaining them from the Milwaukee Development Center. If you have questions about permit requirements, please consult the Development Center's web site, [www.milwaukee.gov/build](http://www.milwaukee.gov/build), or call (414) 286-8210.

City of Milwaukee Historic Preservation Staff

Copies to: Development Center, Ald. Nik Kovac, Inspector Paul Wolfgramm (286-2590), Inspector Kim Lyons

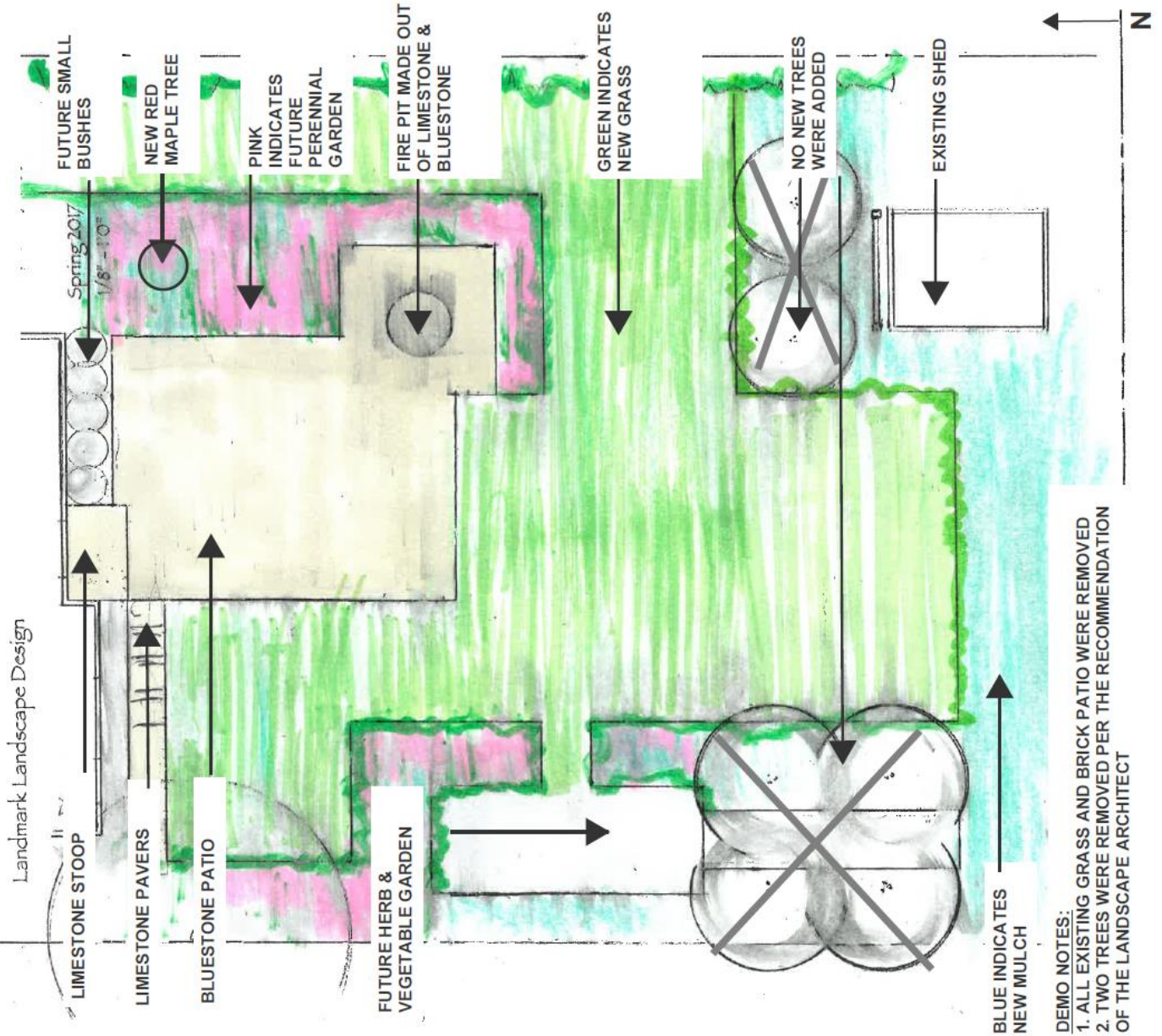


Front of property



Aerial view of property prior to work.

JACKIE POSSELT & RYAN RABE  
 BACK YARD LANDSCAPE PLAN  
 2633 N. LAKE DRIVE  
 MILWAUKEE, WI 53211



Full landscape plan



Partially completed work, new pavers and limestone step.





Partially completed work



Partially completed work with firepit and new tree at left.