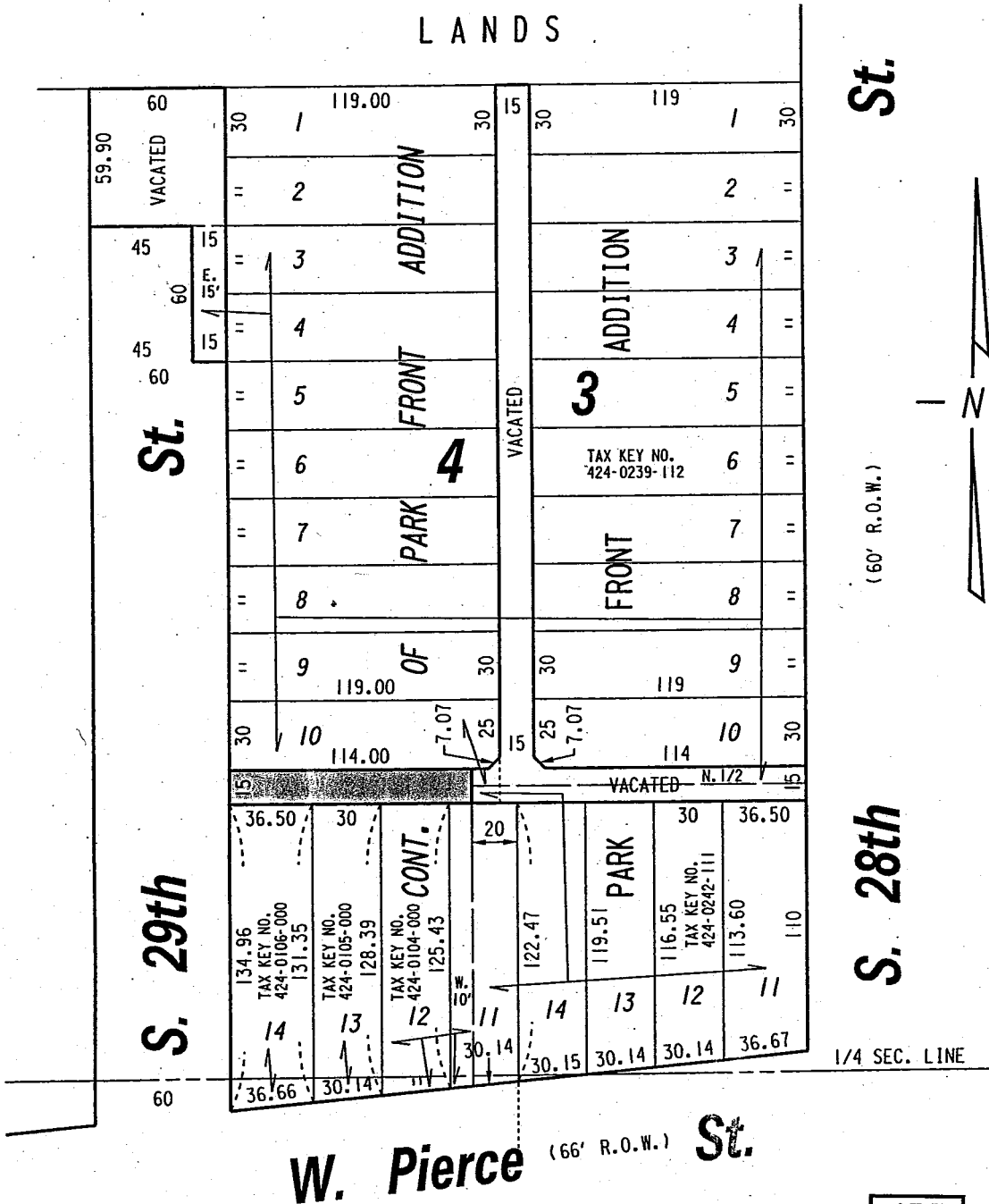


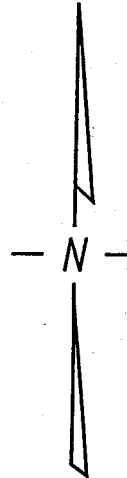
N.E. 1/4 SEC. 36, T.7N., R.21E.

424

LANDS



St.



(60' R.O.W.)

S. 28th

1/4 SEC. LINE

W. Pierce St. (66' R.O.W.)

S.E. 1/4 SEC. 36, T.7N., R.21E.

435


 PORTION OF PUBLIC ALLEY PROPOSED TO BE VACATED

EXHIBIT "A"
 FILE NO. 001050
 INFRASTRUCTURE SERVICES DIVISION
 MILWAUKEE, WISCONSIN

ASSIGNED TO: W.E. FUCHS

CH'K'D. BY: M.C. WILLIAMS

DRAWN BY: W.E.F.

DATE: FEB. 2, 2001

PROJECT/GRANT NO.: WK52337116

SCALE: 1" = 60'

APPROVED BY:

Marcia Lindholm
 CENTRAL DRAFTING & RECORDS MANAGER

Myra Plunk
 CITY ENGINEER