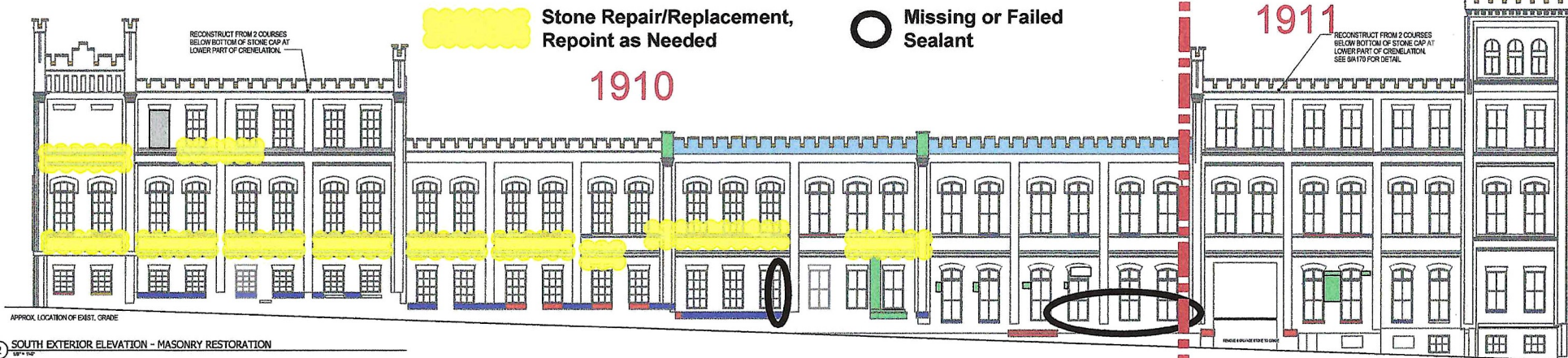


1 SOUTH ELEVATION - DEMOLITION



2 SOUTH EXTERIOR ELEVATION - MASONRY RESTORATION



3 CURRENT CONDITION PHOTOGRAPH - FOR REFERENCE ONLY

MASONRY TREATMENT REQUIREMENT (MTR) KEY		DEMOLITION & DEMOLITION KEYNOTES	
MTR-1	SELECTIVE DECONSTRUCTION AND MATERIAL HARVESTING	KEYNOTE	DESCRIPTION
MTR-2	SUBSTITUTE STONE REPAIR - NOT USED	1	REMOVE SPEAKERS
MTR-3	REGRESSING STONE BY GFI	2	REMOVE LIGHT FIXTURE AND ASSOCIATED INFRASTRUCTURE
MTR-4	DUFFY-BLANE STONE REPAIR	2A	REMOVE & SALVAGE LIGHT FIXTURE. REMOVE ASSOCIATED INFRASTRUCTURE
MTR-5	REMOVE, CLEAN AND RETURN STONE	3	REMOVE MASONRY INFILL MATERIAL
MTR-6	REMOVE AND REPLACE STONE. NOTE: AT BASE OF BUILDING PROVIDE NEW 1" THICK STONE WITH GFI BACK UP (SEE DETAIL)	4	REMOVE AND SALVAGE CANOPY
MTR-7	CRACK INJECTION REPAIR	5	REMOVE LOADING DOCK & MISC. BUILDING ACCESSORIES; WORK TO BE DONE BY SELECTIVE DEMOLITION CONTRACTOR
MTR-8	HISTORIC BRICK RECONSTRUCTION	6	REMOVE DOOR & FRAME; WORK TO BE DONE BY SELECTIVE DEMOLITION CONTRACTOR
MTR-9	MORTAR REMOVAL	6A	REMOVE & SALVAGE DOOR & FRAME; WORK TO BE DONE BY SELECTIVE DEMOLITION CONTRACTOR
MTR-10	LINE MORTAR REPOINTING. NOTE: JAMBS, HEADS, HIDDEN RETURNS ALL TO RECEIVE INDICATED PERCENTAGE OF TUCKPOINTING INDICATED ON ADJACENT WALL. PARAPET FRONTS, SIDES AND REAR FACES ARE TO BE TUCKPOINTED.	7	REMOVE & SALVAGE LADDER
	NOTE: SEE A150 FOR MTR NOTES	8	REMOVE & SALVAGE BALCONY
		9	REMOVE SIGNAGE
		9A	REMOVE & SALVAGE SIGNAGE
		10	REMOVE & SALVAGE SECURITY SCREEN AND HARDWARE
		11	REBUILD ARCHED HEADER
		12	REMOVE LETTERING AS NECESSARY FOR MASONRY RESTORATION; SALVAGE AND RESTORE FOR REINSTALLATION
		13	REMOVE INSECT SCREEN
		14	DRESS NEWLY EXPOSED SAWCUT STONE FACES AT EXISTING JOINTS
		15	REMOVE LOUVER; WORK TO BE DONE BY SELECTIVE DEMOLITION CONTRACTOR
		16	REMOVE & SALVAGE WINDOW; WORK TO BE DONE BY SELECTIVE DEMOLITION CONTRACTOR
		17	REMOVE ELECTRICAL CONDUIT
		18	BRICK TO REMAIN; SEE A114
		19	REMOVE STAIR WELL WITH STONE
		20	REMOVE STEEL STRUCTURE/JAMBS/HEADER AND RESTORE BRICK/STONE
		21	SALVAGE WINDOW, SILL AND STOOL FOR RECONSTRUCTION

**Blue Ribbon Suites LLC**  
Building 29

1205 N. 39th  
Milwaukee, WI 53202

**HGA**  
Architecture | Engineering | Planning  
Hemmel, Green and Abrahamson, Inc.  
333 East Erie Street  
Milwaukee, Wisconsin USA 53202  
Telephone 414.278.2300 Facsimile 414.278.7734

**KRI DEVELOPMENT CORP.**  
710 N. Pleasanton Ave  
Milwaukee WI 53203  
(414) 274-2625  
jim.theusch@kri.com

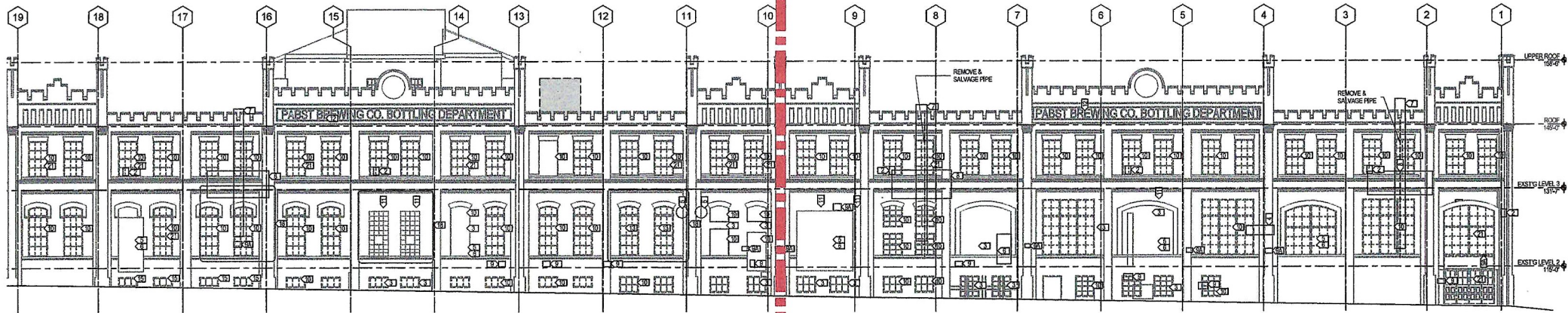
NO.	DESCRIPTION	DATE
4	BP#5 ADDENDA 4	8/26/2014
5	BP#5 ADDENDA 1	1/26/2014

BP#5  
COMM. NO. 3368-001-01  
SCALE As Indicated  
DATE FEBRUARY 28, 2015  
DRAWN Author

**DEMO & MASONRY RESTORATION PLAN - SOUTH ELEVATION**

A162





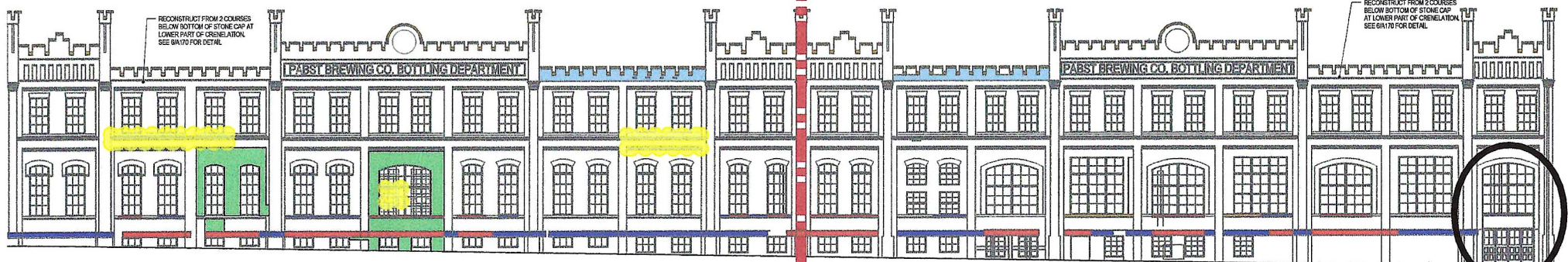
1 WEST ELEVATION - DEMOLITION  
1/16/16

1889

Stone Repair/Replacement,  
Repoint as Needed

Missing or Failed  
Sealant

1910



2 WEST EXTERIOR ELEVATION - MASONRY RESTORATION  
1/16/16



3 CURRENT CONDITION PHOTOGRAPH - FOR REFERENCE ONLY

MASONRY TREATMENT REQUIREMENT (MTR) KEY

[Grey Box]	MTR-1. SELECTIVE DECONSTRUCTION AND MATERIAL HARVESTING
[White Box]	MTR-2. SUBSTITUTE STONE REPAIR - NOT USED
[Green Box]	MTR-3. ADDRESSING STONE IN SITU
[Yellow Box]	MTR-4. CUT-IN-MASON STONE REPAIR
[Blue Box]	MTR-5. REMOVE, CLEAN, AND RETURN STONE
[Red Box]	MTR-6. REMOVE AND REPLACE STONE. NOTE: AT BASE OF BUILDING PROVIDE NEW 6" THICK STONE WITH CMU BACK UP (SEE DETAIL)
[Light Blue Box]	MTR-7. CRACK INJECTION REPAIR
[Dark Blue Box]	MTR-8. HISTORIC BRICK RECONSTRUCTION
[Light Green Box]	MTR-9. MORTAR REMOVAL
[Light Yellow Box]	MTR-10. LIMESTONE REPOINTING. NOTE: JAMBS, HEADS, HIDDEN RETURNS ALL TO RECEIVE INDICATED PERCENTAGE OF TUCKPOINTING INDICATED ON ADJACENT WALL. PARAPET FRONTS, SIDES AND REAR FACES ARE TO BE TUCKPOINTED.

NOTE: SEE A150 FOR MTR NOTES

DECONSTRUCTION & DEMOLITION KEYNOTES

KEYNOTE	DESCRIPTION
1	REMOVE SPEARHEADS
2	REMOVE LIGHT FIXTURE AND ASSOCIATED INFRASTRUCTURE
3	REMOVE & SALVAGE LIGHT FIXTURE. REMOVE ASSOCIATED INFRASTRUCTURE
3A	REMOVE MASONRY INFILL MATERIAL
4	REMOVE AND SALVAGE CANOPY
5	REMOVE LONGING DOCK & MISC. BUILDING ACCESSORIES. WORK TO BE DONE BY SELECTIVE DEMOLITION CONTRACTOR
6	REMOVE DOOR & FRAME. WORK TO BE DONE BY SELECTIVE DEMOLITION CONTRACTOR
6A	REMOVE & SALVAGE DOOR & FRAME. WORK TO BE DONE BY SELECTIVE DEMOLITION CONTRACTOR
7	REMOVE & SALVAGE ARCHES
8	REMOVE & SALVAGE BALCONY
9	REMOVE SIGNAGE
9A	REMOVE & SALVAGE SIGNAGE
10	REMOVE & SALVAGE SECURITY SCREEN AND HARDWARE
11	REBUILD ARCHED HEADER
12	REMOVE LETTERING AS NECESSARY FOR MASONRY RESTORATION, SALVAGE AND RESTORE FOR REINSTALLATION
13	REMOVE INSECT SCREEN
14	DRESS NEARLY EXPOSED SAWCUT STONE FACES AT EXISTING JOINTS
15	REMOVE LOUVER. WORK TO BE DONE BY SELECTIVE DEMOLITION CONTRACTOR
15	REMOVE & SALVAGE WINDOW. WORK TO BE DONE BY SELECTIVE DEMOLITION CONTRACTOR
17	REMOVE ELECTRICAL CONDUIT
18	BRICK TO REMAIN. SEE A174
20	REMOVE STEEL STRUCTURE JAMBS/HEADER AND RESTORE BRICKSTONE
21	SALVAGE WINDOW, SILL AND STOOL, FOR RECONSTRUCTION

**Blue Ribbon Suites LLC**  
Building 29  
1125 N. 9th  
Milwaukee, WI 53202

**HA**  
Architecture | Engineering | Planning  
Hammel, Grass and Abramson, Inc.  
333 East Erie Street  
Milwaukee, Wisconsin USA 53202  
Telephone 414.278.8200 Facsimile 414.278.7734

**KM DEVELOPMENT CORP**  
710 N Pennington Ave  
Milwaukee WI 53203  
(414) 274-2825  
jim.treusch@kdc.com

WISCONSIN

NO	DESCRIPTION	DATE
4	BPW ADDENDUM 4	5/26/2014
5	BPW ADDENDUM 1	12/8/2014

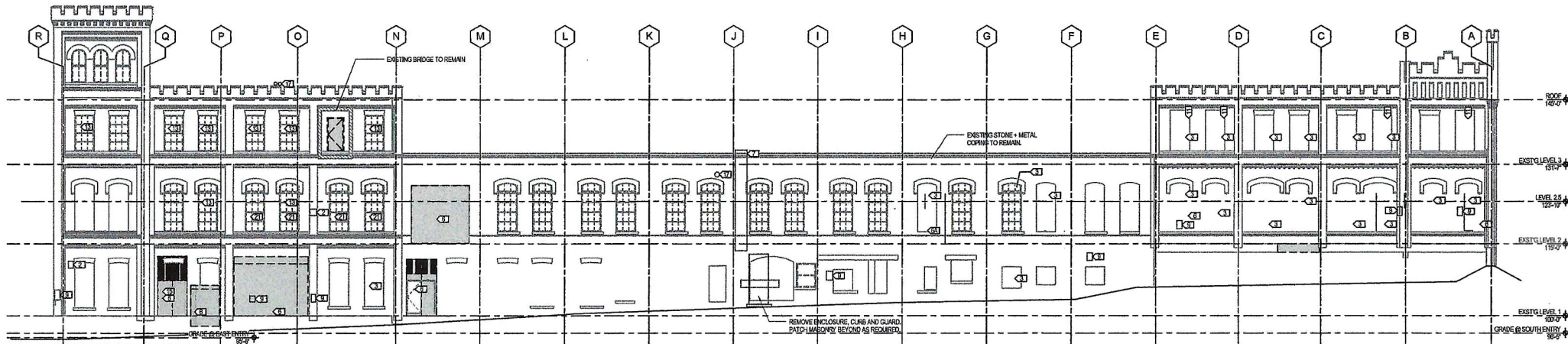
BP#5

COMM. NO.	3369-001-01
SCALE	As Indicated
DATE	FEBRUARY 28, 2015
DRAWN	Author

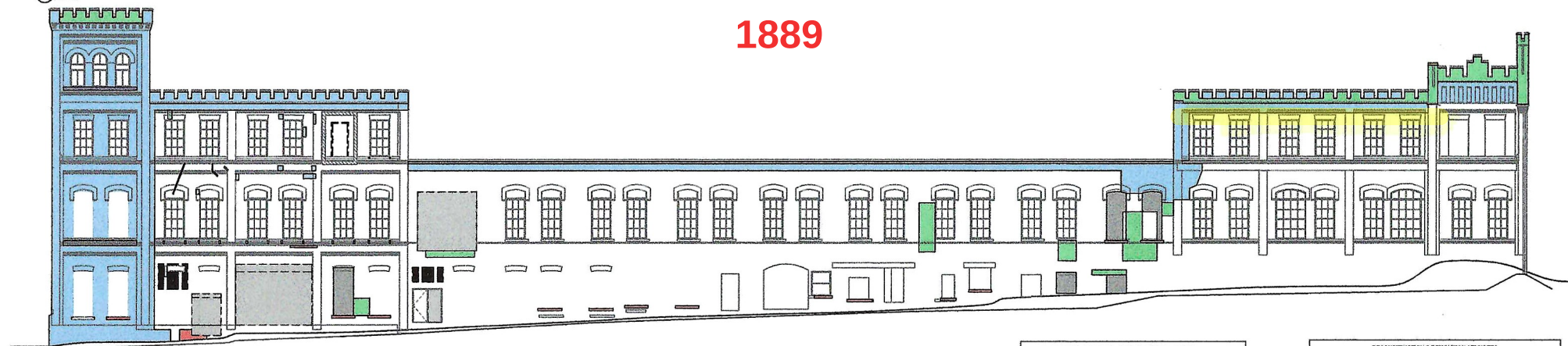
**DEMO & MASONRY RESTORATION PLAN - WEST ELEVATION**

**A163**





1 NORTH ELEVATION - DEMOLITION



2 NORTH EXTERIOR ELEVATION - MASONRY RESTORATION

MASONRY TREATMENT REQUIREMENT (MTR) KEY

Blue	MTR-1. SELECTIVE DECONSTRUCTION AND MATERIAL HARVESTING
Green	MTR-2. SUBSTITUTE STONE REPAIR - NOT USED
Light Green	MTR-3. REDRESSING STONE IN SITU
Dark Green	MTR-4. OUTCROP STONE REPAIR
Yellow	MTR-5. REMOVE, CLEAN AND RETURN STONE
Orange	MTR-6. REMOVE AND REPLACE STONE. NOTE: AT BASE OF BUILDING PROVIDE NEW 4" THICK STONE WITH GCM BACK UP (SEE DETAIL)
Light Blue	MTR-7. CRACK INJECTION REPAIR
Dark Blue	MTR-8. HISTORIC BRICK RECONSTRUCTION
Light Green	MTR-9. MOSTLY REFINISH
Light Blue	MTR-10. LIME MORTAR REPOINTING. NOTE: JAMBS, HEADS, HIDDEN RETURNS ALL TO RECEIVE INDICATED PERCENTAGE OF TUCKPOINTING INDICATED ON ADJACENT WALL. PARAPET FRONTS, SIDES AND REAR FACES ARE TO BE TUCKPOINTED.

NOTE: SEE ALSO FOR MTR NOTES

DECONSTRUCTION & DEMOLITION KEYNOTES

KEYNOTE	DESCRIPTION
1	REMOVE SPEAKERS
2	REMOVE LIGHT FIXTURE AND ASSOCIATED INFRASTRUCTURE
2A	REMOVE & SALVAGE LIGHT FIXTURE. REMOVE ASSOCIATED INFRASTRUCTURE
3	REMOVE MASONRY INFILL MATERIAL
4	REMOVE & SALVAGE CANDY
5	REMOVE LOADING DOCK & MISC. BUILDING ACCESSORIES; WORK TO BE DONE BY SELECTIVE DEMOLITION CONTRACTOR
6	REMOVE DOOR & FRAME; WORK TO BE DONE BY SELECTIVE DEMOLITION CONTRACTOR
6A	REMOVE & SALVAGE DOOR & FRAME; WORK TO BE DONE BY SELECTIVE DEMOLITION CONTRACTOR
7	REMOVE & SALVAGE LADDER
8	REMOVE & SALVAGE BALCONY
9	REMOVE SIGNAGE
9A	REMOVE & SALVAGE SIGNAGE
10	REMOVE & SALVAGE SECURITY SCREEN AND HARDWARE
11	REBUILD ARCHED HEADER
12	REMOVE LETTERING AS NECESSARY FOR MASONRY RESTORATION; SALVAGE AND RESTORE FOR REINSTALLATION
13	REMOVE INSECT SCREEN
14	DRESS NEWLY EXPOSED SAWCUT STONE FACES AT EXISTING JOINTS
15	REMOVE LOWER WORK TO BE DONE BY SELECTIVE DEMOLITION CONTRACTOR
16	REMOVE & SALVAGE WINDOW; WORK TO BE DONE BY SELECTIVE DEMOLITION CONTRACTOR
17	REMOVE ELECTRICAL CONDUIT
18	BRICK TO REMAIN, SEE A11#
19	REMOVE STAIR INFILL WITH STONE
20	REMOVE STEEL STRUCTURE/SUMMER HEADER AND RESTORE BRICKSTONE
21	SALVAGE WINDOW, SILL AND STOOL FOR RECONSTRUCTION

*Handwritten note:* Yellow = BRICK Repair @ CORNERS/TOP



3 CURRENT CONDITION PHOTOGRAPH - FOR REFERENCE ONLY

**Blue Ribbon Suites LLC**  
 Building 29  
 1120 N. 9th  
 Milwaukee, WI 53202

**HA**  
 Architecture | Engineering | Planning  
 Hammel, Green and Abrahamson, Inc.  
 333 East Erie Street  
 Milwaukee, Wisconsin USA 53202  
 Telephone 414.278.8200 Fax/telex 414.278.7734

**KH DEVELOPMENT CORP**  
 710 N. Park/Kilton Ave  
 Milwaukee WI 53203  
 (414) 274-2825  
 jim.theunser@khdc.com

NO	DESCRIPTION	DATE
4	BPM ADDENDUM 4	8/22/2014
5	BPM ADDENDUM 1	12/22/2014

BP#5  
 COMM. NO. 3368-001-01  
 SCALE As Indicated  
 DATE FEBRUARY 28, 2015  
 DRAWN Author

**DEMO & MASONRY RESTORATION PLAN - NORTH ELEVATION**