



MILWAUKEE  
HISTORIC  
PRESERVATION  
COMMISSION

LIVING WITH HISTORY

## Certificate of Appropriateness

Milwaukee Historic Preservation Commission/200 E. Wells Street/Milwaukee, WI 53202/phone 414-286-5712/fax 414-286-3004

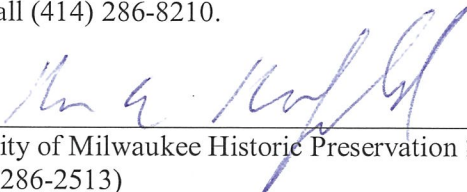
**Property** 1330 E. BRADY ST. Brady Street Historic District  
**Description of work** Remove existing "Berry Me" and "Philly Way" signs and install new "Pepi's Place" sign. The new sign will be located in the space of the "Philly Way" sign and be of the same size and configuration.  
**Date issued** 11/6/2015 PTS ID 106987 COA

In accordance with the provisions of Section 320-21 (11) and (12) of the Milwaukee Code of Ordinances, the Milwaukee Historic Preservation Commission has issued a certificate of appropriateness for the work listed above. The work was found to be consistent with preservation guidelines. The following conditions apply to this certificate of appropriateness:

All work to be completed according to plans and specifications in original application. All mounting hardware from vacated location of "Berry Me" sign to be removed and all mounting holes filled to match surrounding materials.

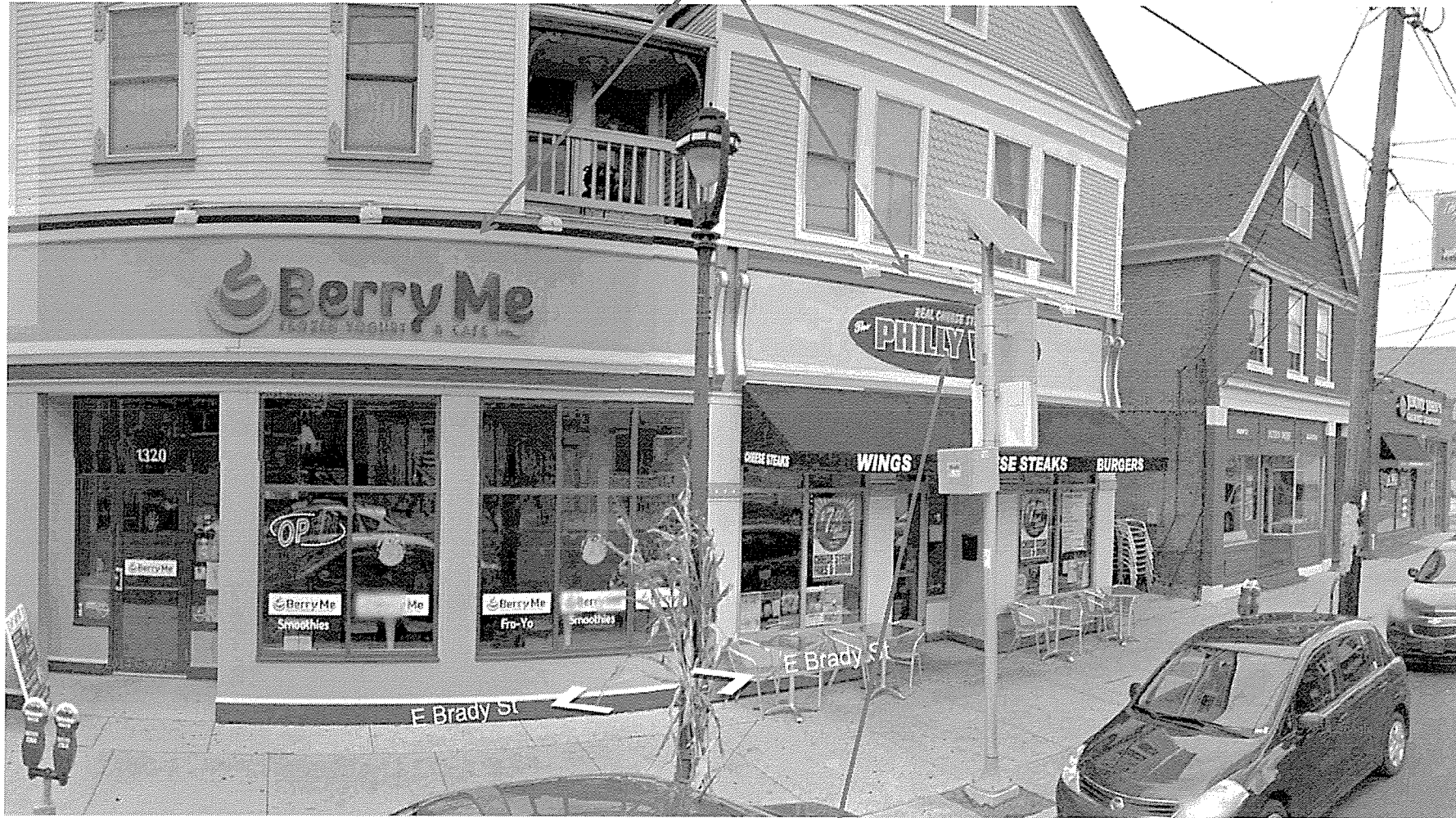
All work must be done in a craftsman-like manner, and must be completed within one year of the date this certificate was issued. Staff must approve any changes or additions to this certificate before work begins. Work that is not completed in accordance with this certificate may be subject to correction orders or citations. If you require technical assistance, please contact Dean Doerrfeld of the Historic Preservation staff as follows: Phone: (414) 286-5712 E-mail: [Dean.Doerrfeld@milwaukee.gov](mailto:Dean.Doerrfeld@milwaukee.gov).

If permits are required, you are responsible for obtaining them from the Milwaukee Development Center. If you have questions about permit requirements, please consult the Development Center's web site, [www.milwaukee.gov/build](http://www.milwaukee.gov/build), or call (414) 286-8210.

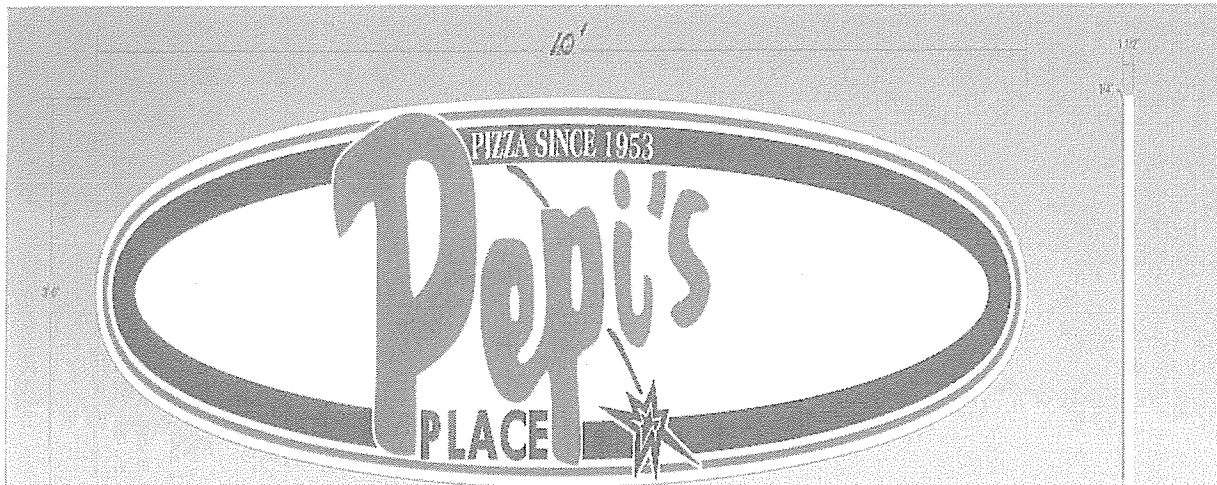
  
\_\_\_\_\_  
City of Milwaukee Historic Preservation Staff

Copies to: Development Center, Ald. Nik Kovac, Contractor, Inspector Construction Section (286-2513)

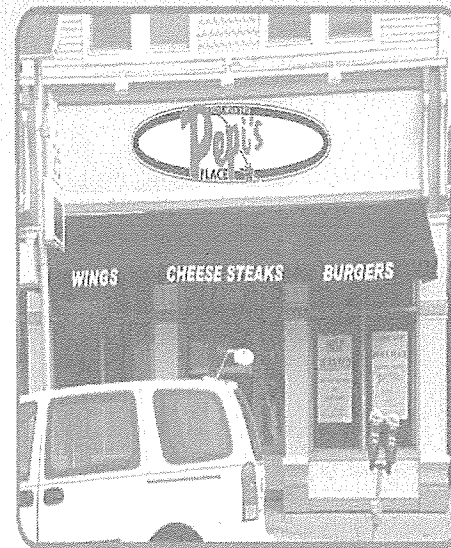
Signage to be removed



New sign in this location



SIDE VIEW



PEPI'S RESTAURANT / BUILDING SIGNAGE

- ONE (1) SINGLE SIDED, NON-ILLUMINATED BUILDING SIGN
- 1 1/2" DEEP CUSTOM FABRICATED ALUMINUM CABINET W/ DIMENSIONAL DETAILS
- 1/4" SINTRA DETAILS MOUNTED FLUSH TO SIGN FACE
- "PIZZA SINCE 1953" 3M WHITE VINYL LETTERING
- SIGN STUD MOUNTED FLUSH TO FASCIA

\*FIELD VERIFY DIMENSIONS

\*DIGITAL VECTOR ARTWORK REQUIRED

New sign