

Milwaukee County Trails



Winter Trails

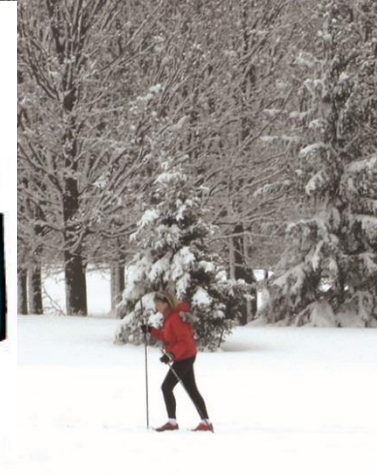
Water Trails

**Hiking Trails (Forked
Leaf Aster)**

**Mountain Biking
Optimized Trails
(Hikers allowed)**



MILWAUKEE URBAN
WATER TRAIL



OAK LEAF TRAIL



OAK LEAF TRAIL



TRAIL LINES

- MILWAUKEE RIVER LINE
- ZIP LINE
- LAKE PARK LOOP
- KINNICKINNIC LINE
- SOUTH SHORE LINE
- OAK CREEK LINE
- DREXEL CONNECTOR
- ROOT RIVER LINE
- WHITNALL PARK LOOP
- MENOMONEE LINE
- BRADLEY CONNECTOR
- OTHER TRAILS

- ### TRAIL INDICATORS
- PAVED TRAIL
 - ON STREET
 - YOU ARE HERE
 - MILWAUKEE COUNTY PARK

Download the complete trail map at OakLeafTrail.com

MILWAUKEE RIVER LINE



- 1 MILWAUKEE COMMUNITY SAILING CENTER
 - 2 WAR MEMORIAL CENTER
 - 3 MILWAUKEE ART MUSEUM
 - 4 DISCOVERY WORLD
 - 5 SUMMERFEST GROUNDS
 - 6 MILWAUKEE PIERHEAD LIGHTHOUSE
- A TO RIVERSIDE PARK
B TO LAKE PARK (Take the Lake Loop)
C TO HUMBOLDT PARK

LEGEND

- Restrooms
- Food/Drink
- Bubbler
- Parking
- PAVED TRAIL
- PARKWAY
- CITY STREET
- YOU ARE HERE
- TRAIL JUNCTION

- MILWAUKEE RIVER LINE
- KINNICKINNIC LINE
- LAKE PARK LOOP
- HANK AARON STATUE

Download the complete trail map at OakLeafTrail.com

Signage

1. More than 700 arrow signs currently
2. "Lines" and 29 Map Kiosks
3. Coordinated Signage Plan with City of Milwaukee
 - Under development, complete spring 2020
 - Coordinated wayfinding between trails and streets



Assets & Opportunity





MILWAUKEE COUNTY

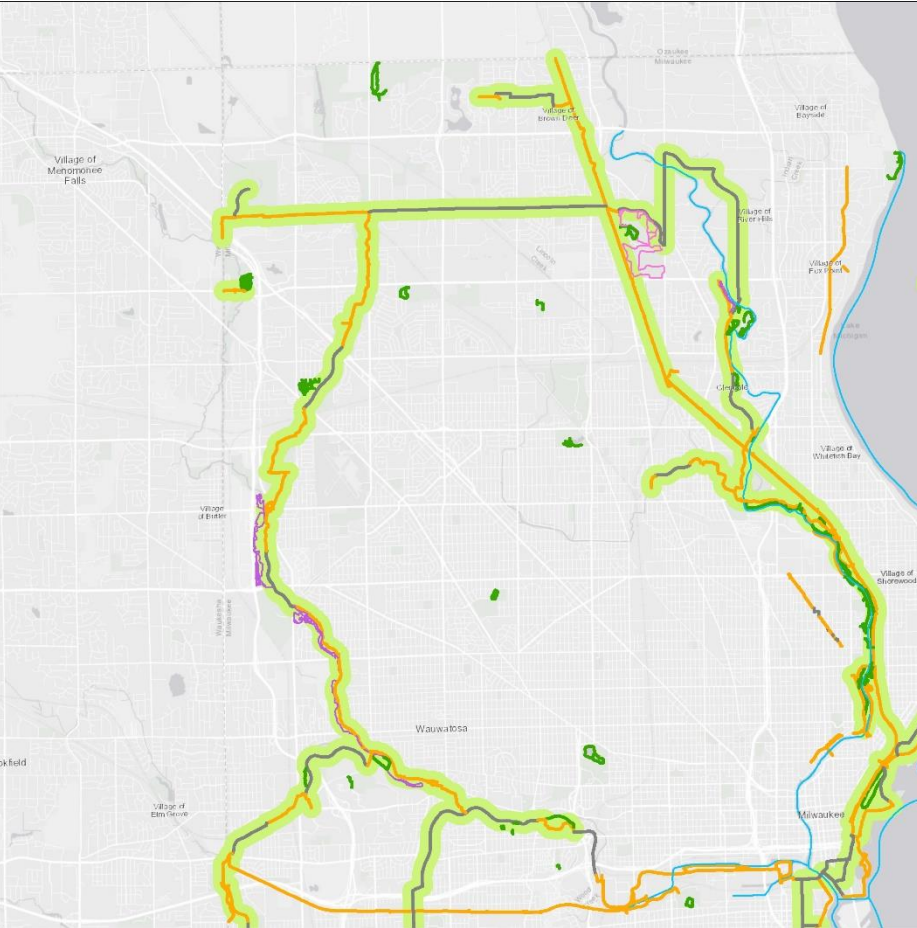
PARKS

TRAILS

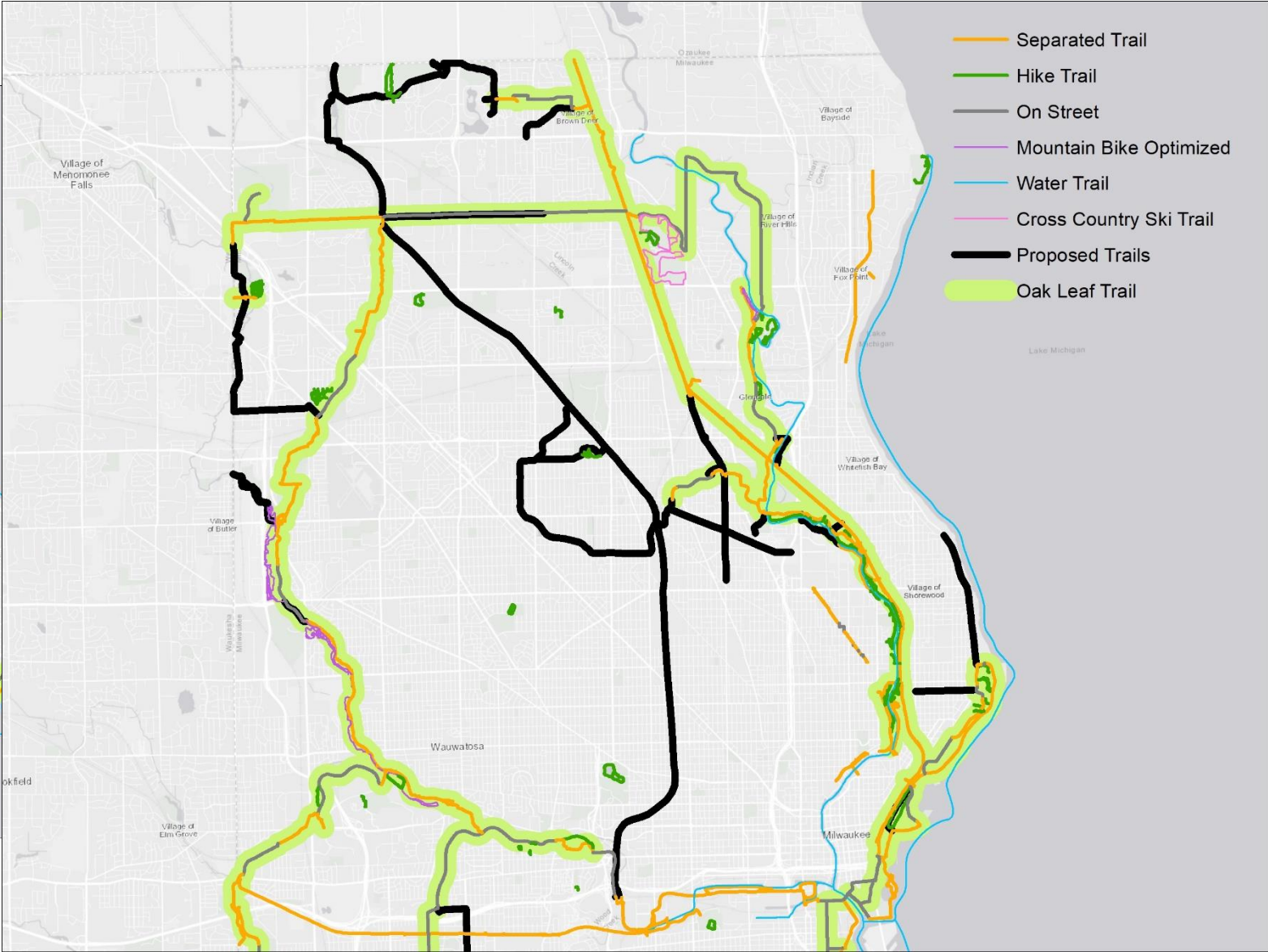
Current Conditions



Current Trails on Northside



Proposed Trails on Northside DRAFT

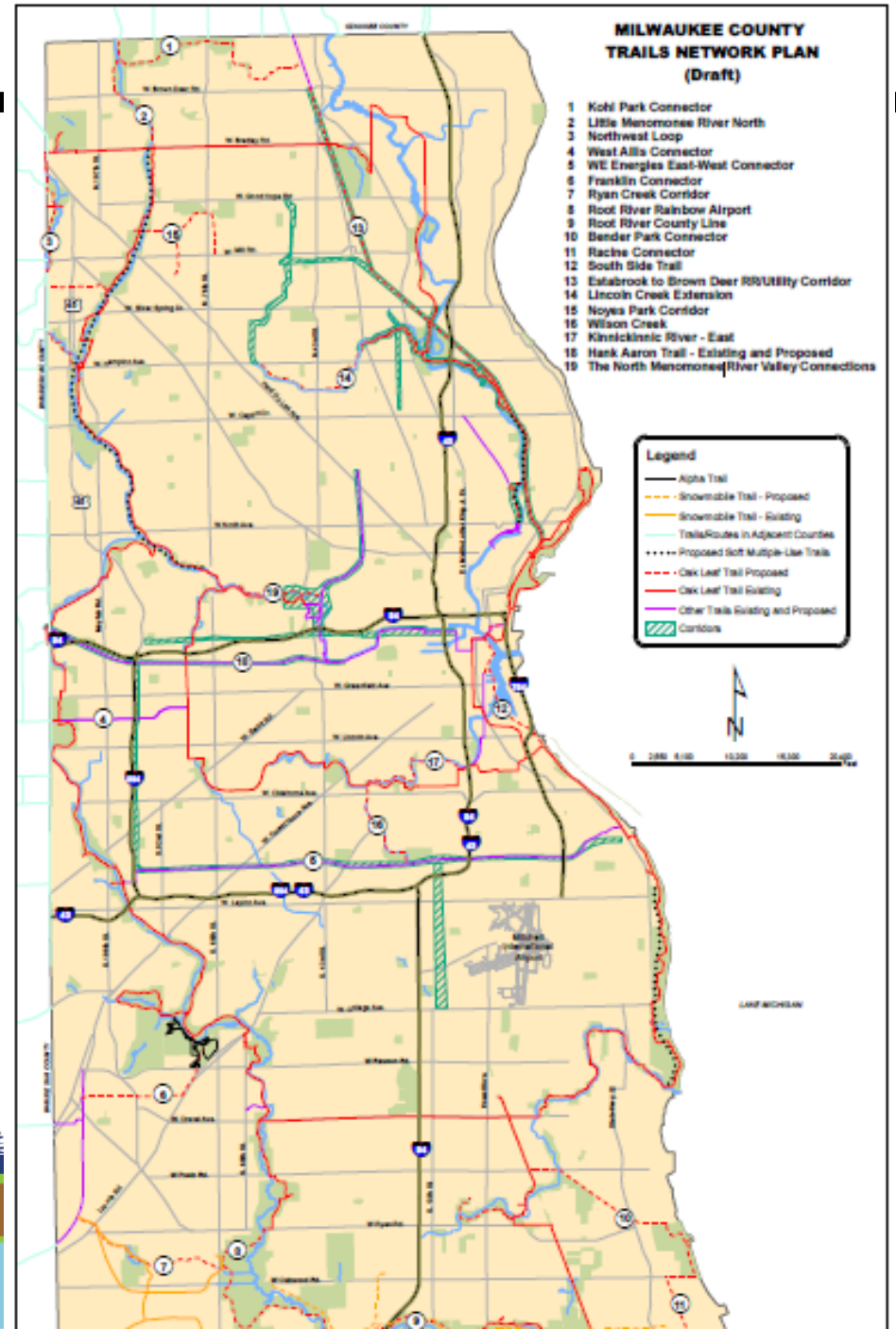
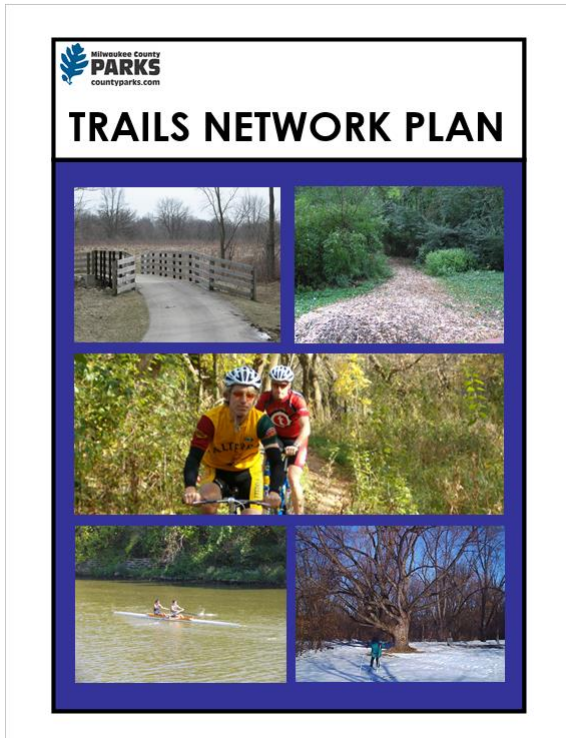




MILWAUKEE COUNTY

PARKS TRAILS

Trails Network Plan



Future

- Expand network
- Work in partnership to address equity issues and balance access across neighborhoods
- Reduce on-street miles
- Enhance signage to support new
- Protect natural areas, while providing public access





MILWAUKEE COUNTY

PARKS

TRAILS

Partnerships



Friends of Milwaukee County Parks



rails-to-trails
conservancy



**MILWAUKEE RIVER
GREENWAY**



**Badgerland
Striders**



Milwaukee
Bicycle and Pedestrian
Task Force



**WISCONSIN
BIKE FED**



Resources

- Share complaints/concerns/ideas with me:
Jessica.Wineberg@milwaukeecountywi.gov 257-4515
- Call Parks Hotline for urgent matters: 257-PARK
- Volunteer! Trail clean ups, community rides, etc
- Follow [Safe and Healthy Streets MKE](#) on facebook for news and updates
- Attend or join the [Milwaukee County Trail Council](#) (meets every other month)
- Review and share [Reconnecting Milwaukee: A BikeAble™ Study of Opportunity, Equity and Connectivity](#)