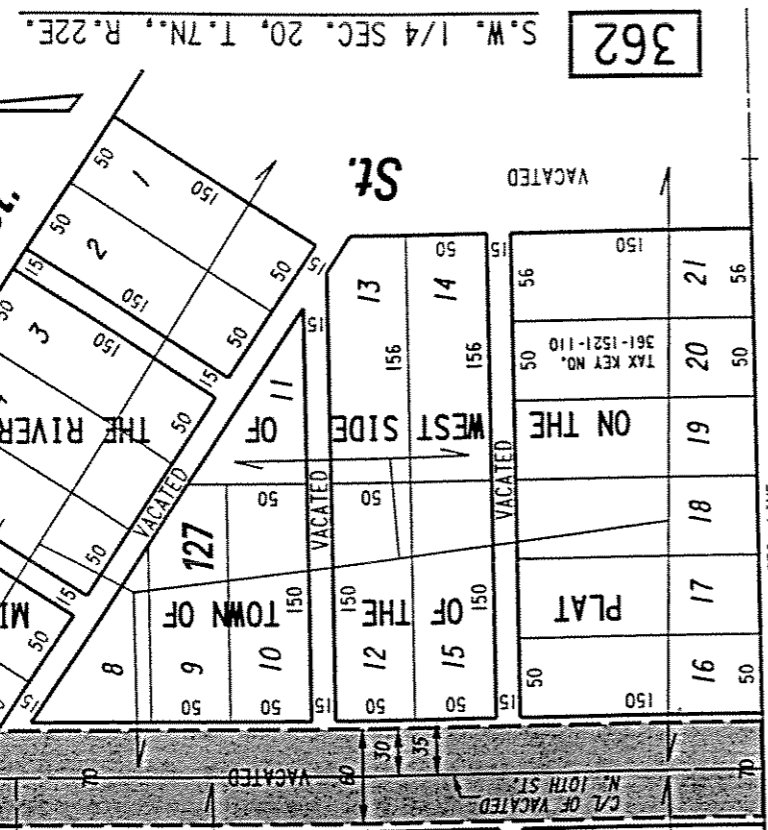
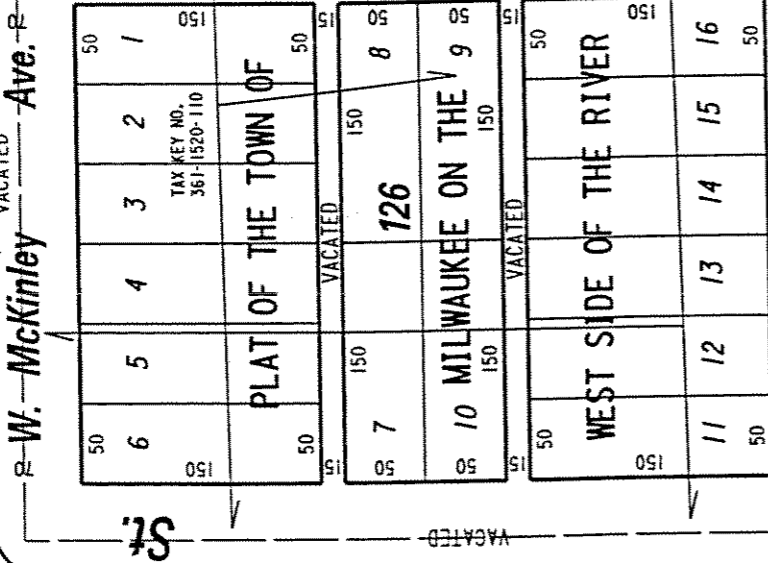


HILLSIDE INTERCHANGE
 PARK EAST FREEWAY &
 NORTH-SOUTH LOT

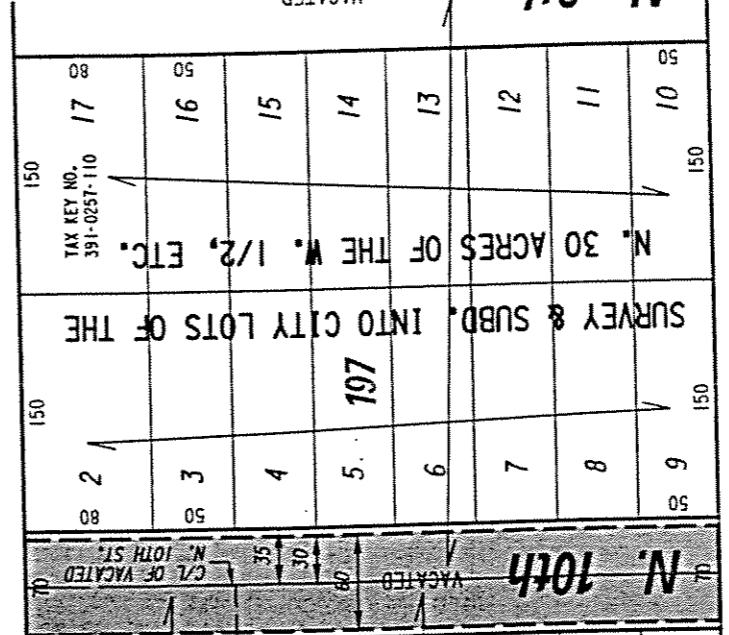
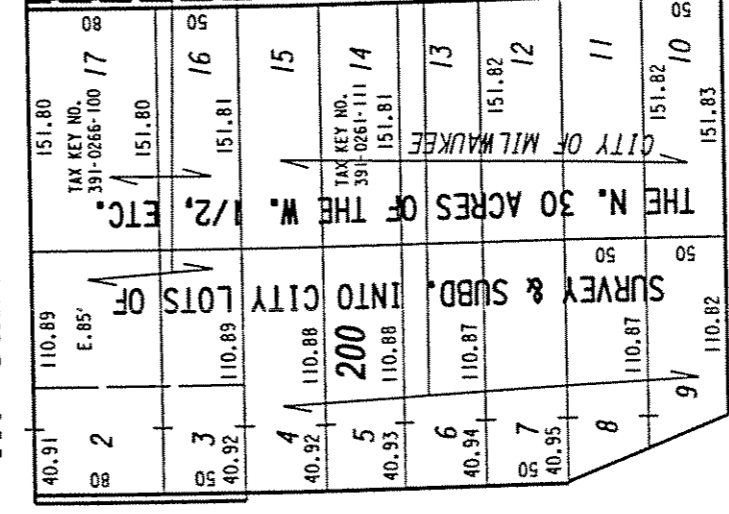
W. McKinley Ave. R

St.

W. Winnebago



W. Juneau Ave. 70



W. Highland Ave.

EXHIBIT "A"

FILE NO.

PROPOSED UNDERGROUND
 CONDUIT EASEMENT

INFRASTRUCTURE SERVICES DIVISION
 MILWAUKEE, WISCONSIN

ASSIGNED TO: W.E. FUCHS
 DRAWN BY: W.E.F.
 PROJECT/GRANT NO.: WK52338010
 APPROVED BY:

CH'K'D. BY: W.E. FUCHS
 DATE: MARCH 19, 2004
 SCALE: 1" = 120'

Marcia Lindholm
 CENTRAL DRAFTING & RECORDS MANAGER

W. E. Fuchs
 CIVIL ENGINEER