

Plant List

CODE	QTY	BOTANICAL NAME	COMMON NAME	SIZE	ROOT	NOTES	AVERAGE MATURE SIZE
Trees							
Car / Fir	1	Carpinus caroliniana 'J.N. Upright'	Firespire Musclemwood	1 1/2"-2"	BB		20' ht. x 9' spread
Shrubs							
Bux / Mou	6	Buxus x 'Green Mound'	Green Mound Boxwood	18" - 24"	Cont		3' ht. x 3' spread
Rhu / Gro	9	Rhus aromatica 'Gro-low'	Gro-low Sumac	2 gallon	Cont		3' ht. x 7' spread
Vib / Spi	1	Viburnum carlesii 'J.N. Select'	Spiced Bouquet Viburnum	30" - 36"	Cont		5' ht. x 6' spread
Groundcovers, Ornamental Grasses and Perennials							
Asi / Fan	9	Astilbe x arendsii 'Fanal'	Fanal Astilbe	1 gallon	Cont		1.5' ht x 2' spread, 2' flower ht
Bru / Jac	3	Brunnera macrophylla 'Jack Frost'	Jack Frost Bugloss	1 gallon	Cont		1.5' ht x 1.5' spread, 1.5' flower ht
Cal / Kar	13	Calamagrostis acutiflora 'Karl Foerster'	Karl Foerster Feather Reed Grass	1 gallon	Cont		2' ht x 2'+ spread, 5.5' flower ht
Hos / Sum	4	Hosta 'Sum and Substance'	Sum and Substance Hosta	1 gallon	Cont		2.5' ht x 6' spread, 3.5' flower ht
Pac / Gre	128	Pachysandra terminalis 'Green Carpet'	Green Carpet Pachysandra	4"	Cont	8" O.C. spacing	5' ht x 2'+ spread, 8" flower ht

Urns

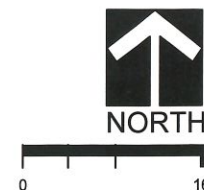
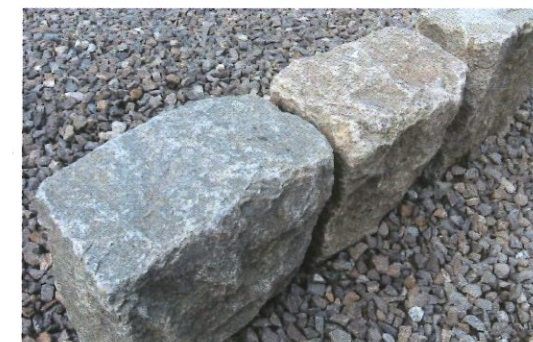


Urn Model No. LS9044 - Lake Bluff 32 from Longshadow (Urn Dimensions - 32" diameter, 15.5" ht., 17" square base)
 Plinth Model No. LS9033 - Lake Bluff 10 from Longshadow (Plinth Dimensions - 10" ht., 17" square, 22" square base)

Recycled Street Pavers

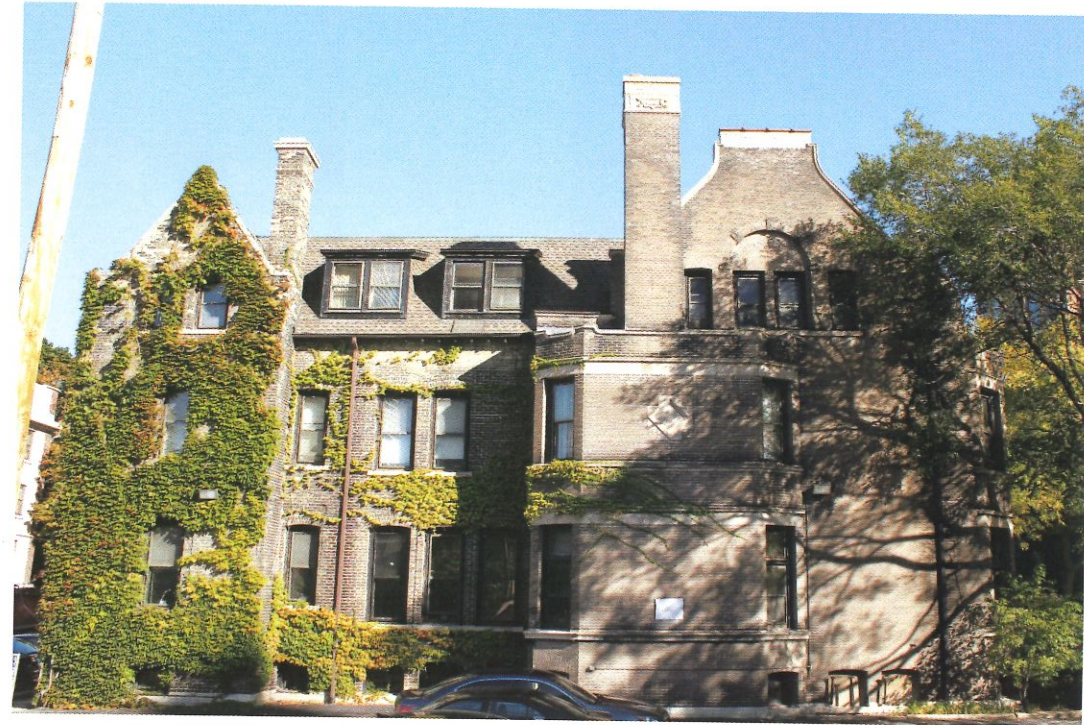


Granite Cobble Curbs





1 EAST ELEVATION
P1.1



2 SOUTH ELEVATION
P1.1



3 PARTIAL NORTH ELEVATION
P1.1



4 WEST ELEVATION
P1.1

414.336.5853 | ramseyjones@sbcglobal.net
734 East Wright Street | Milwaukee WI | 53212
ramseyjonesarchitects.com

RAMSEY JONES | ARCHITECTS

© 2017 Ramsey Jones Architects, LLC

Art House Hotel
817 N. Marshall St.
Milwaukee, WI 53202

DATE	REASON
11.02.17	BOZA SUBMITTAL

PROJECT NO. 17.02

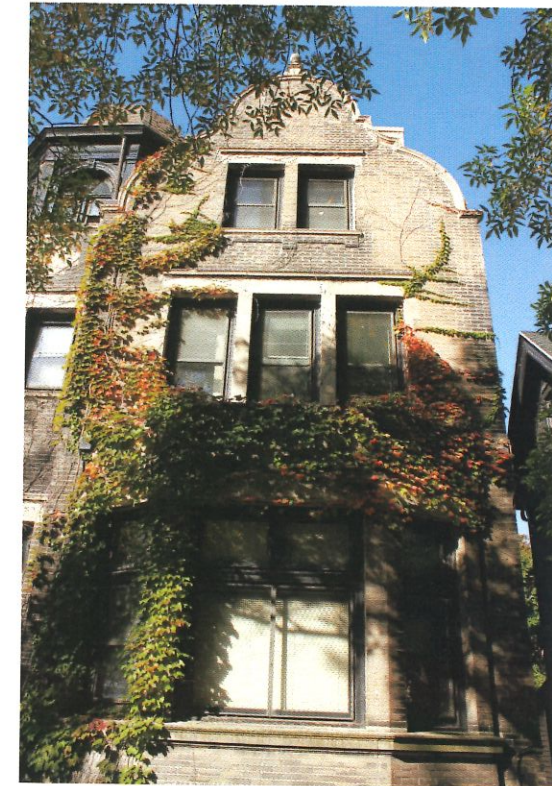
P1.1



1 DETAIL, EAST ELEV.
P1.2



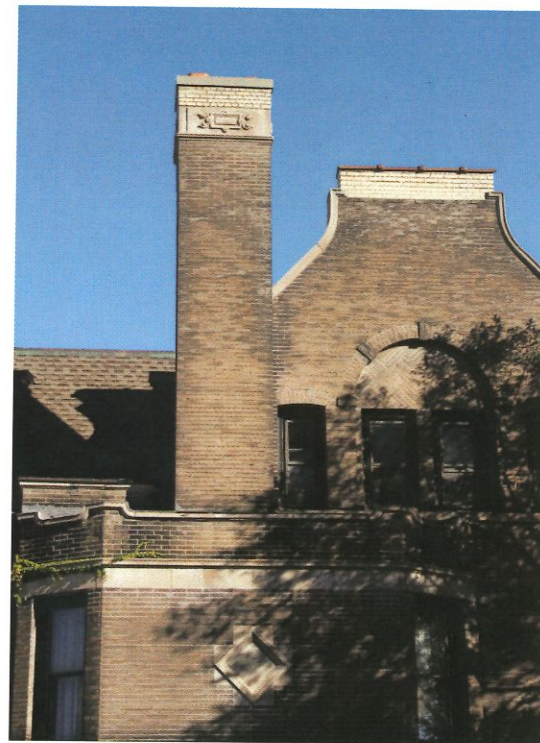
2 CORNER BAY, EAST
P1.2



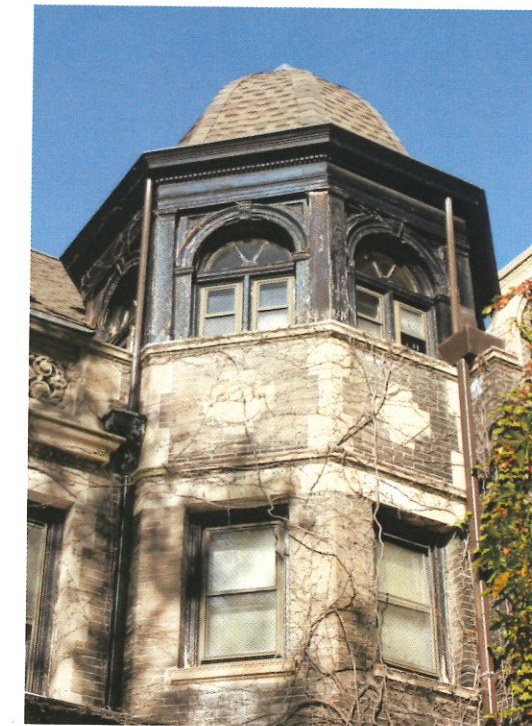
3 CORNER GABLE, EAST
P1.2



4 ENTRY DOOR
P1.2



5 DETAIL, SOUTH
P1.2



6 CUPOLA ROOM, EAST
P1.2

414.336.5853 | ramseyjones@sbcglobal.net
734 East Wright Street | Milwaukee WI | 53212
ramseyjonesarchitects.com

RAMSEY JONES | ARCHITECTS

© 2017 Ramsey Jones Architects, LLC

Art House Hotel
817 N. Marshall St.
Milwaukee, WI 53202

DATE	REASON
11.02.17	BOZA SUBMITTAL

PROJECT NO. 17.02

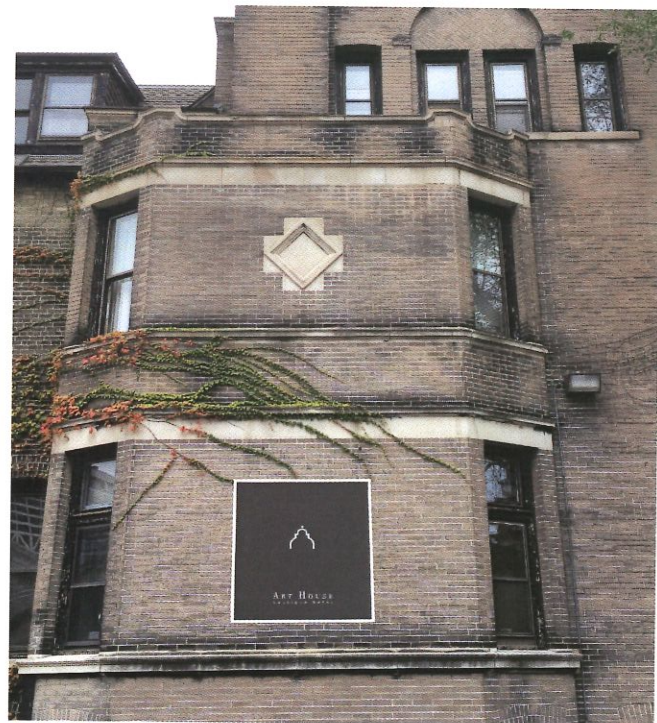
P1.2



1 CANOPY SIGN
P1.3



2 CONTEXT, EAST
P1.3 UNIVERSITY CLUB, PARKING GARAGE



3 WALL SIGN
P1.3



4 CONTEXT, NORTH
P1.3 McCORMICK LAW OFFICES

414.336.5853 | ramseyjones@sbcglobal.net
734 East Wright Street | Milwaukee WI | 53212
ramseyjonesarchitects.com

RAMSEY JONES | ARCHITECTS

© 2017 Ramsey Jones Architects, LLC

Art House Hotel
817 N. Marshall St.
Milwaukee, WI 53202

DATE	REASON
11.02.17	BOZA SUBMITTAL

PROJECT NO. 17.02

P1.3