

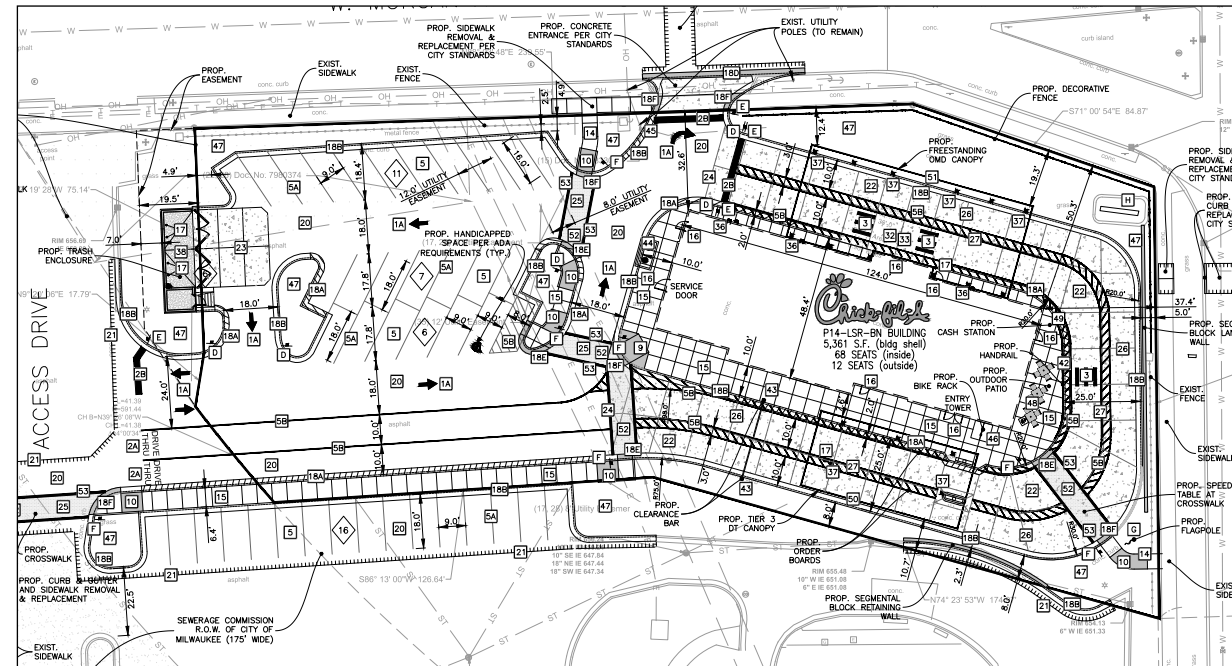
VICINITY MAP

N.T.S.



AERIAL VIEW

N.T.S.



SITE PLAN

SCALE: 1/64" = 1'-0"

KRISTEN HAMILTON - 678-725-8852  
[KHilton@chandersigns.com](mailto:KHilton@chandersigns.com)  
 BRIAN HEAD - 210-349-3804  
[BHead@chandersigns.com](mailto:BHead@chandersigns.com)

• **UPDATED FLOOR PLAN REQUIRED PRIOR TO MANUFACTURING**

<b>Design #</b>	0634473AR6
<b>Sheet</b>	1 of 24
<b>Client</b>	#5405
<b>Address</b>	2701 W Morgan Ave. Milwaukee, WI 53221-1133
<b>Account Rep.</b>	KRISTEN HAMILTON BRIAN HEAD
<b>Designer</b>	LEAH LANSFORD
<b>Date</b>	1/3/23
<b>Approval / Date</b>	
<b>Client</b>	
<b>Sales</b>	
<b>Estimating</b>	
<b>Art</b>	
<b>Engineering</b>	
<b>Landlord</b>	

Revision/Date
R1(03/06/2023)AM: UPDATED SITE PLAN
R2(04/11/2023)AM: UPDATED SITE PLAN AND UPDATED SIGN ID WITH NEW 27' TALL MONUMENT WITH ICON AND READERBOARD. ALSO, UPDATED CREDIT CARD STRIP ON DOOR VINYL
R3(5/23/23)LL: UPDATED TO TWO OPTIONS FOR SIGN A. CHANGED A AND B TO BE ROSE
R4(5/10/23)LL: ADDED SPEC CALLOUTS FOR ROSE. DELETED OPTION 1 FOR SIGN A AND CHANGED DIMS FOR OPTION 2. ADDED NIGHT VIEW FOR MONUMENT AND WALL SIGN
R5(05/24/2023)AM: CHANGES REQUESTED
SIGN A NEEDS TO INVERT THE COLORS OF THE READER BOARD
REMOVE THE CALL OUT ON THE SITE PLAN FOR THE 'EXISTING MONUMENT SIGN'
SIGN B - PLEASE SPELL OUT THE ROUTE OUT SHOW THROUGH DESCRIPTION AND ADD CALL OUTS FOR ILLUMINATED ACRYLIC AND PAINTED ALUMINUM PARTS OF THE SIGN ON THE RENDERING



<b>National Headquarters</b>	14201 Sovereign Road #101 Fort Worth, TX 76155 (214)992-2000 Fax (214)992-2044
<b>San Antonio</b>	17319 San Pedro Ave Ste 200 San Antonio, TX 78232 (210)349-3804 Fax (210)349-8724
<b>Northeast US</b>	2301 River Road Ste 201 Louisville, KY 40206 (502) 897-9800 Cell (502) 554-2575
<b>Georgia</b>	111 Woodstone Place Dawsonville, GA 30534 (678) 725-8852 Fax (210) 349-8724
<b>South Texas</b>	PO BOX 125 206 Doral Drive Portland, TX 78374 (361) 563-5599 Fax (361) 643-6533

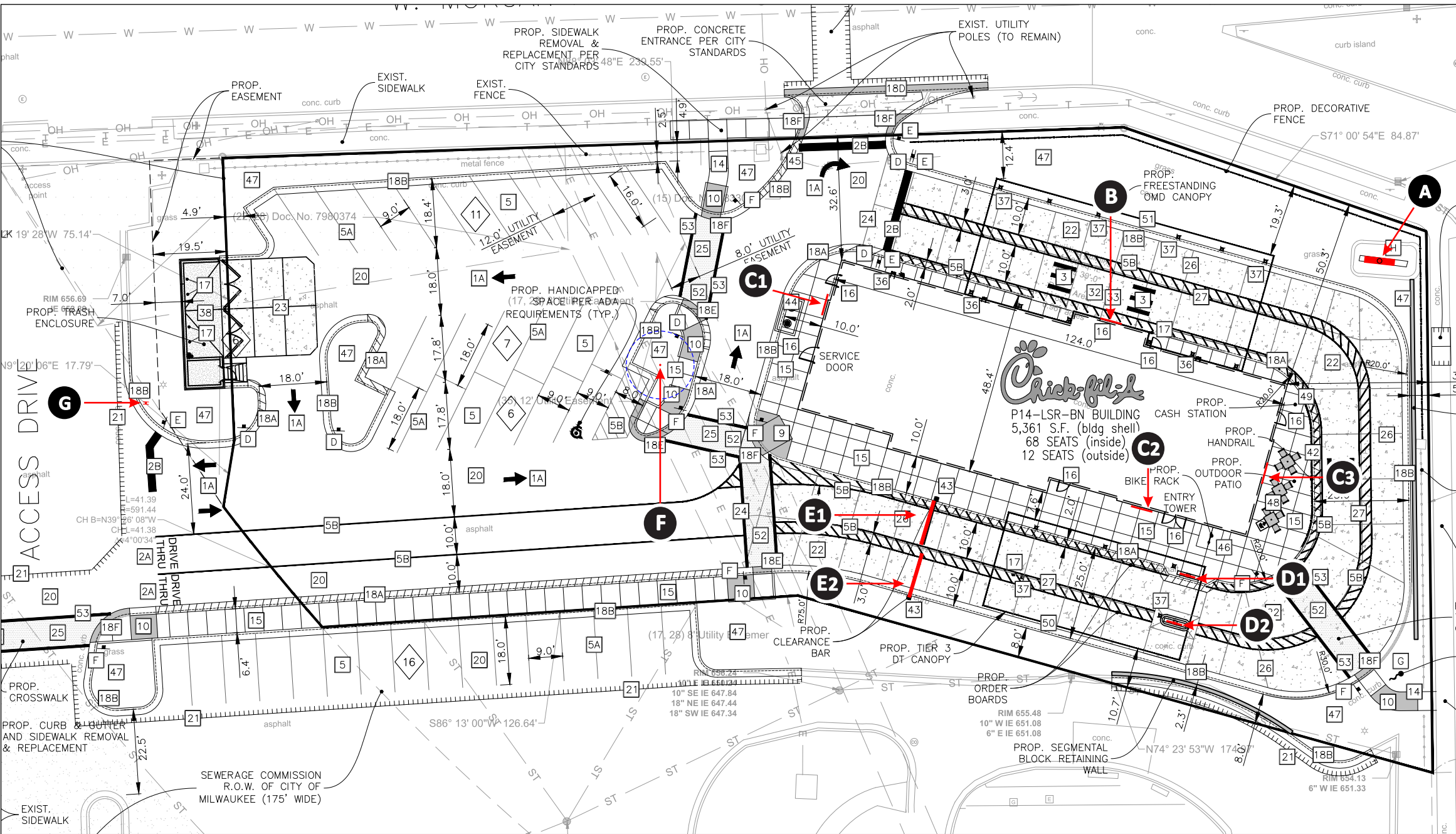
This drawing is the property of Chandler Signs, LLC. All rights to its use for reproduction are reserved by Chandler Signs, LLC.

**FINAL ELECTRICAL CONNECTION BY CUSTOMER**

THIS SIGN IS INTENDED TO BE INSTALLED IN ACCORDANCE WITH ARTICLE 600 OF THE NATIONAL ELECTRICAL CODE AND/OR OTHER APPLICABLE LOCAL CODES. THIS INCLUDES PROPER GROUNDING & BONDING OF THE SIGN. SIGN WILL BEAR UL LABEL(S).



**SITE PLAN**



**SITE PLAN 1**

SCALE: 1/32" = 1'-0"

SIGN I-D LETTER	FACE A	FACE B
A		
B		N/A
C1-3		N/A
D1-2		N/A
E1		N/A
E2		N/A
F		N/A
G		

**Design #**  
0634473AR6

**Sheet** 2 of 24

**Client**  
#5405

**Address**  
2701 W Morgan Ave.  
Milwaukee, WI 53221-1133

**Account Rep.** KRISTEN HAMILTON  
BRIAN HEAD

**Designer** LEAH LANSFORD

**Date** 1/3/23

**Approval / Date**

**Client**

**Sales**

**Estimating**

**Art**

**Engineering**

**Landlord**

**Revision/Date**

R1(03/06/2023)AM: UPDATED SITE PLAN

R2(04/11/2023)AM: UPDATED SITE PLAN AND UPDATED SIGN I-D WITH NEW 21' TALL MONUMENT WITH ICON AND READERBOARD. ALSO, UPDATED CREDIT CARD STRIP ON DOOR VINYL

R3(5/23/23)LL: UPDATED TO TWO OPTIONS FOR SIGN A. CHANGED A AND B TO BE ROST

R4(5/10/23)LL: ADDED SPEC CALLOUTS FOR ROST. DELETED OPTION 1 FOR SIGN A AND CHANGED DIMS FOR OPTION 2. ADDED NIGHT VIEW FOR MONUMENT AND WALL SIGN

R5(05/24/2023)AM: CHANGES REQUESTED

SIGN A NEEDS TO INVERT THE COLORS OF THE READER BOARD

REMOVE THE CALL OUT ON THE SITE PLAN FOR THE 'EXISTING MONUMENT SIGN'

SIGN B - PLEASE SPELL OUT THE ROUTE OUT SHOW THROUGH DESCRIPTION AND ADD CALL OUTS FOR ILLUMINATED ACRYLIC AND PAINTED ALUMINUM PARTS OF THE SIGN ON THE RENDERING



**National Headquarters** 14201 Sovereign Road #101  
Fort Worth, TX 76155  
(214)992-2000 Fax (214)992-2044

**San Antonio** 17319 San Pedro Ave  
Ste 200  
San Antonio, TX 78232  
(210)349-3804 Fax (210)349-8724

**Northeast US** 2301 River Road Ste 201  
Louisville, KY 40206  
(502) 897-9800 Cell (502) 554-2575

**Georgia** 111 Woodstone Place  
Dawsonville, GA 30534  
(678) 725-8852 Fax (210) 349-8724

**South Texas** PO BOX 125 206 Doral Drive  
Portland, TX 78374  
(361) 563-5599 Fax (361) 643-6533

This drawing is the property of Chandler Signs, LLC. All rights to its use for reproduction are reserved by Chandler Signs, LLC.

**FINAL ELECTRICAL CONNECTION BY CUSTOMER**

THIS SIGN IS INTENDED TO BE INSTALLED IN ACCORDANCE WITH ARTICLE 600 OF THE NATIONAL ELECTRICAL CODE AND/OR OTHER APPLICABLE LOCAL CODES. THIS INCLUDES PROPER GROUNDING & BONDING OF THE SIGN. SIGN WILL BEAR UL LABEL(S).



**SITE PLAN 1**



National Headquarters 14201 Sovereign Road #101  
Fort Worth, TX 76155  
(214)992-2000 Fax (214)992-2044

San Antonio 17319 San Pedro Ave  
Ste 200  
San Antonio, TX 78232  
(210)349-3804 Fax (210)349-8724

Northeast US 2301 River Road Ste 201  
Louisville, KY 40206  
(502) 897-9800 Cell (502) 554-2575

Georgia 111 Woodstone Place  
Dawsonville, GA 30534  
(678) 725-8852 Fax (210) 349-8724

South Texas PO BOX 125 206 Doral Drive  
Portland, TX 78374  
(361) 563-5599 Fax (361) 643-6533

This drawing is the property of  
Chandler Signs, LLC  
All rights to its use for reproduction  
are reserved by Chandler Signs, LLC

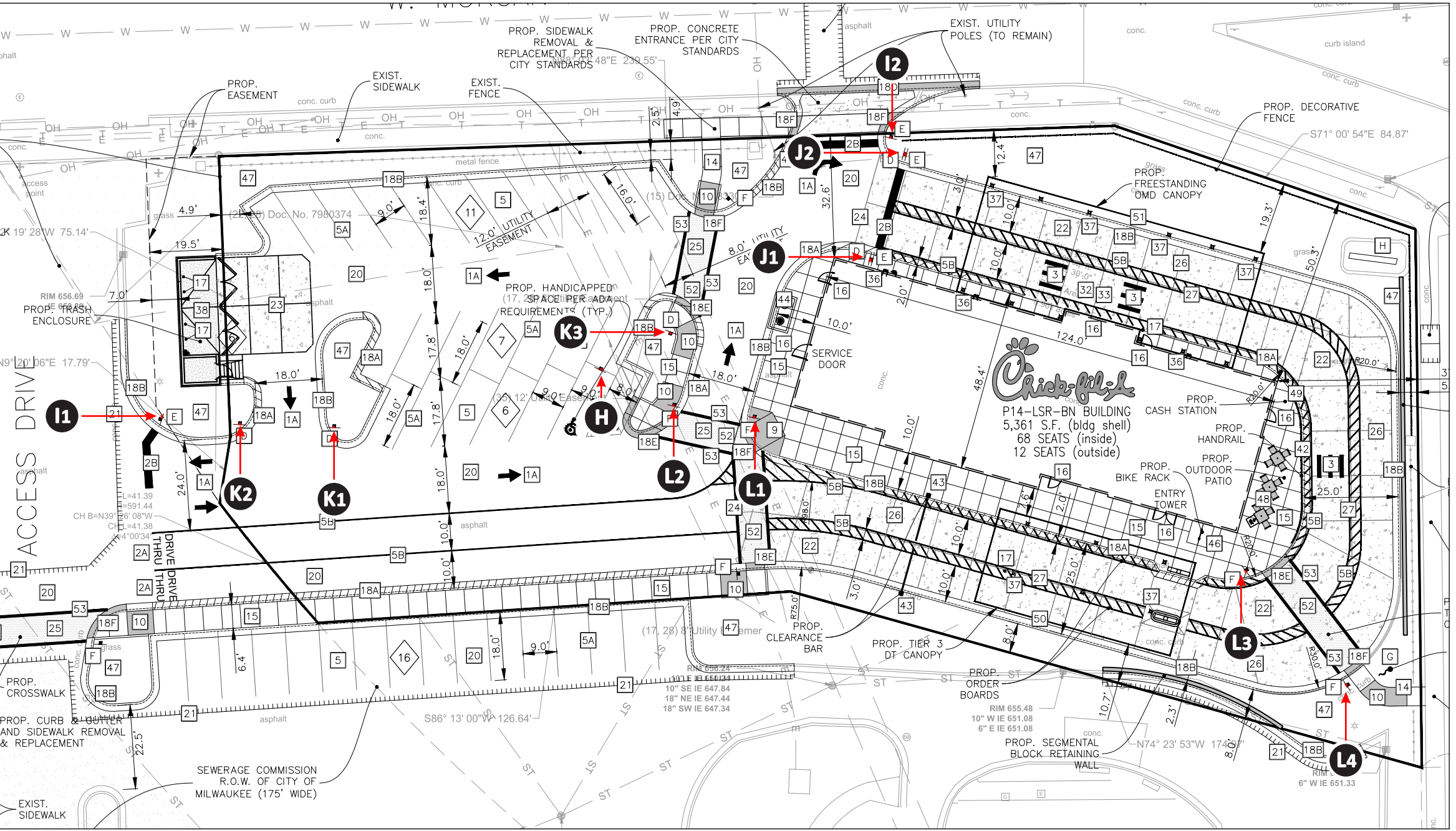
**FINAL ELECTRICAL CONNECTION BY CUSTOMER**

THIS SIGN IS INTENDED TO BE INSTALLED  
IN ACCORDANCE WITH ARTICLE 600 OF THE  
NATIONAL ELECTRICAL CODE AND/OR OTHER  
APPLICABLE LOCAL CODES. THIS INCLUDES  
PROPER GROUNDING & BONDING OF THE SIGN.  
SIGN WILL BEAR UL LABEL(S).



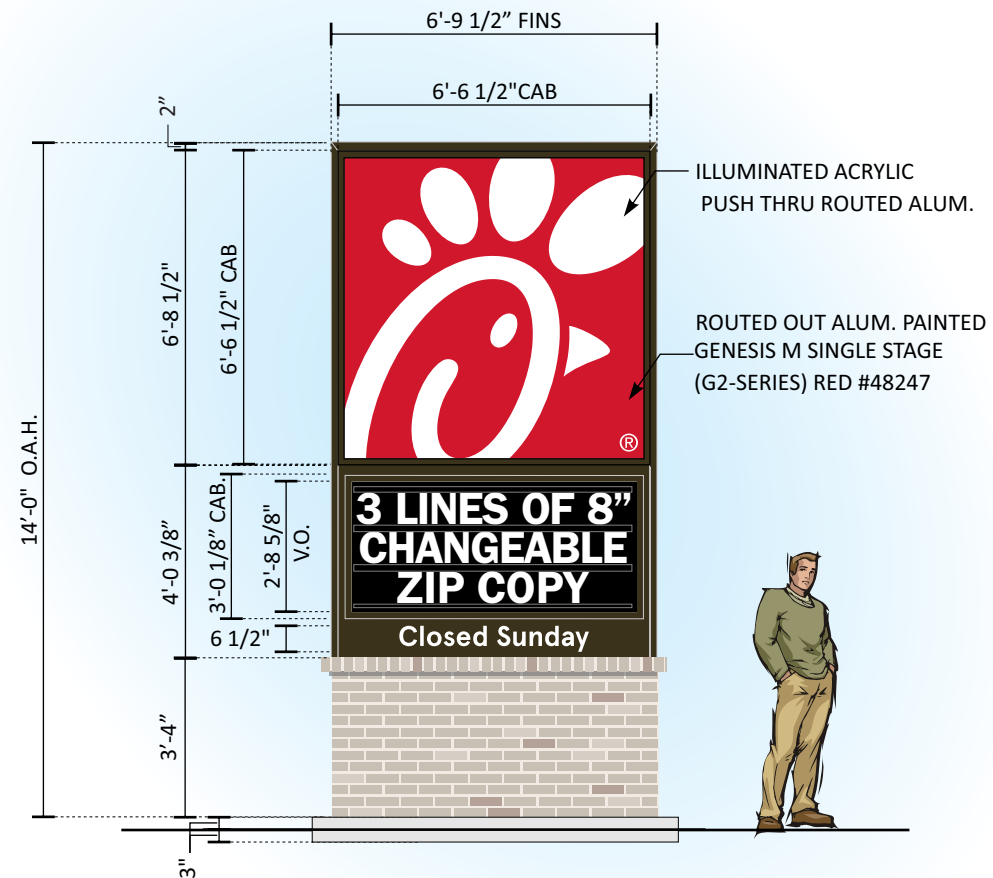
**SITE PLAN 2**

SIGN I-D LETTER	FACE A	FACE B
H	 WITH BOLLARD	 WITH BOLLARD
I1		N/A
I2	 	N/A
J1 J2		
K1 K2		N/A
K3	 	N/A
L1-4		N/A



**SITE PLAN 2**

SCALE: 1/32" = 1'-0"



**SPECS:**  
 MONUMENT IS EXTRUDED ALUM. FRAME WITH ALUM. TUBE FRAME BASE. .080" ALUM. CLADDING PAINTED MATTHEWS #74155 DARK BRONZE, SEMI-GLOSS.

**MAIN ID LOGO FACES**  
 EXTRUDED ALUM. CABINET PAINTED MATTHEWS #74155 DARK BRONZE, SEMI- GLOSS. ROUTE OUT SHOW THRU ALUMINUM MAIN ID LOGO FACES WITH RETAINERS. FACES TO BE PAINTED GENESIS M SINGLE STAGE ( G2-SERIES) RED #48247 BACKED WITH #7328 WHITE EXTRUDED ACRYLIC. AND RETURNS TO BE PAINTED #74155 DK. BRONZE, SEMIGLOSS CABINET IS INTERNALLY ILLUMINATED WITH 7100K WHITE LEDS AS REQUIRED.

**PLEASE NOTE: ONLY WHITE OF MAIN ID/LOGO, "CLOSED SUNDAY" AND READER BOARD ZIP LINES WILL LIGHT UP. RED OF MAIN ID WILL NOT LIGHT UP**

**PLEASE NOTE: INVERTED BLACK CARDS WITH CLEAR/WHITE LETTERING**

**READER BOARD DISPLAY:**  
 .125" ALUM. FACE PAN PANEL WITH ROUTED OUT OPENING FOR READER BOARD AND R.O.P.T COPY READING "CLOSED SUNDAY", WITH HINGED LOCKABLE F-TRACK VANDAL COVER PAINTED MATTHEWS #74155 DARK BRONZE, SEMI-GLOSS. CLEAR LEXAN FACE WITH HINGED VANDAL COVER FRAME. INSET 3/16" #7328 BLACK PLEX. TRACK TO ACCOMMODATE THREE ( 3 ) LINES OF 8" INVERTED BLACK CARDS WITH CLEAR/WHITE LETTERING CHICK-FIL-A COMMERCIAL WAGNER ZIP LETTER SET OF 334. INTERNALLY ILLUMINATED WITH 7100K WHITE LEDS AS REQUIRED.

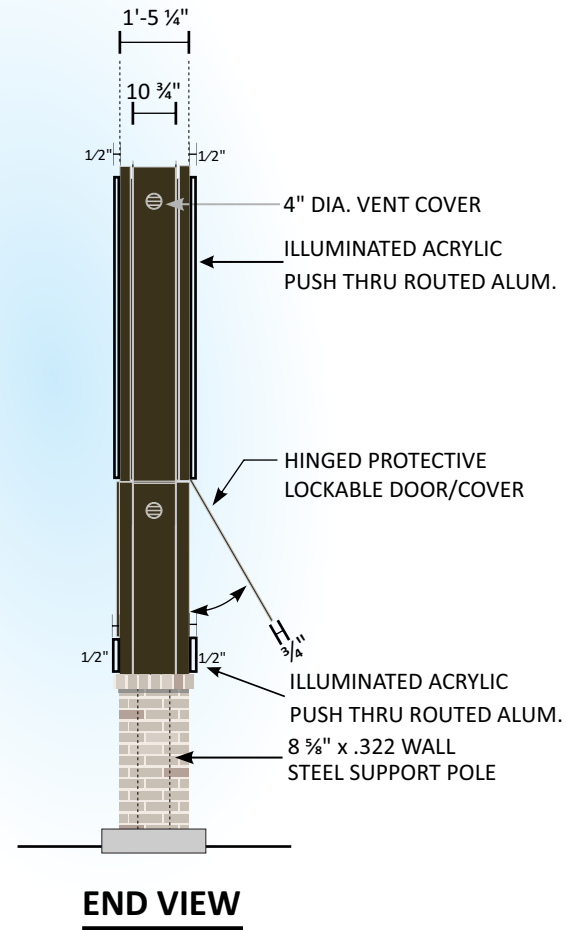
**PLEASE NOTE: POSSIBLE SUBSTITUTION OF MANUAL CHANGE CARD READER BOARD FOR DIGITAL MESSAGE BOARD. BLACK BACKGROUND WITH NO FLASHING ANIMATION LETTERING TO BE ILLUMINATED RED OR WHITE ONLY.**

**FOUNDATION SYSTEM**  
 ONE ( 1 ) 8 5/8" O.D. x .322" WALL STEEL SUPPORT  
 ONE ( 1 ) 24" x 5'-0" DEEP CONCRETE PIER.

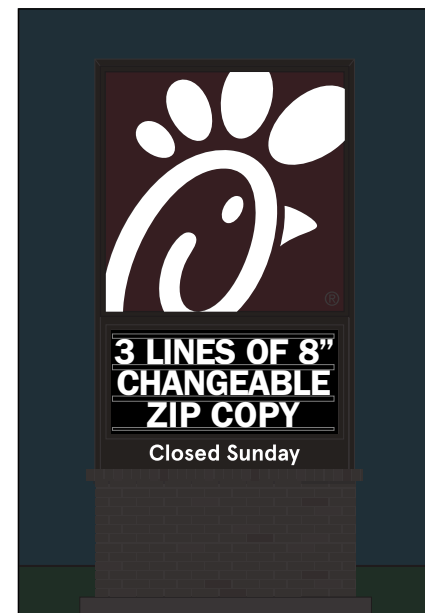
CONCRETE PAD AND 1" x 1" x .125" ALUMINUM FABRICATED BASE FRAME WITH 1/2" CEMENT BOARD.

**MASONRY / BRICK: BY G.C.**  
 THE MONUMENT BRICK MATERIAL AND DESIGN SHALL MATCH THE BUILDING MATERIAL AND MORTAR FINISH.

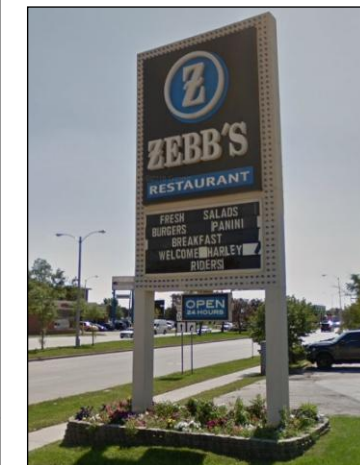
**PRIMARY ELECTRIC RUN THRU NEC APPROVED WEATHER-PROOF CONDUIT - COORDINATE PRIOR TO CONCRETE FOUNDATION / PAD POUR.**



**END VIEW**



**NIGHT VIEW**



**EXISTING CONDITIONS**

**A D/F MONUMENT SIGN** SCALE: 1/4" = 1'-0"  
 ONE ( 1 ) REQUIRED - MANUFACTURE AND INSTALL 72.54 SQFT  
 G.C. TO REMOVE AND DISCARD ONE EXISTING D/F ZEBB'S MONUMENT.  
 MANUFACTURE AND INSTALL ONE NEW D/F MONUMENT SIGN IN THE SAME LOCATION.

<b>Design #</b>	
0634473AR6	
<b>Sheet</b>	4 of 24
<b>Client</b>	
#5405	
<b>Address</b>	
2701 W Morgan Ave. Milwaukee, WI 53221-1133	
<b>Account Rep.</b>	KRISTEN HAMILTON BRIAN HEAD
<b>Designer</b>	LEAH LANSFORD
<b>Date</b>	1/3/23
<b>Approval / Date</b>	
<b>Client</b>	
<b>Sales</b>	
<b>Estimating</b>	
<b>Art</b>	
<b>Engineering</b>	
<b>Landlord</b>	

Revision/Date	
R1(03/06/2023)AM: UPDATED SITE PLAN	
R2(04/11/2023)AM: UPDATED SITE PLAN AND UPDATED SIGN ID A WITH NEW 27' TALL MONUMENT WITH ICON AND READERBOARD. ALSO, UPDATED CREDIT CARD STRIP ON DOOR VINYL	
R3(5/23/23)LL: UPDATED TO TWO OPTIONS FOR SIGN A. CHANGED A AND B TO BE ROS	
R4(5/10/23)LL: ADDED SPEC CALLOUTS FOR ROST. DELETED OPTION 1 FOR SIGN A AND CHANGED DIMS FOR OPTION 2. ADDED NIGHT VIEW FOR MONUMENT AND WALL SIGN	
R5(05/24/2023)AM: CHANGES REQUESTED SIGN A NEEDS TO INVERT THE COLORS OF THE READER BOARD REMOVE THE CALL OUT ON THE SITE PLAN FOR THE "EXISTING MONUMENT SIGN" SIGN B - PLEASE SPELL OUT THE ROUTE OUT SHOW THROUGH DESCRIPTION AND ADD CALL OUTS FOR ILLUMINATED ACRYLIC AND PAINTED ALUMINUM PARTS OF THE SIGN ON THE RENDERING	



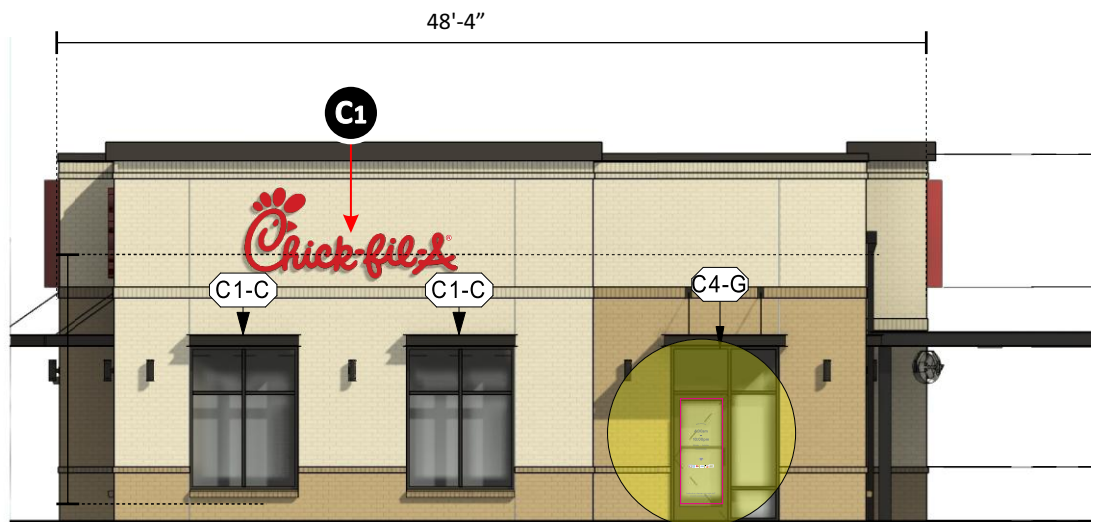
<b>National Headquarters</b>	14201 Sovereign Road #101 Fort Worth, TX 76155 (214)992-2000 Fax (214)992-2044
<b>San Antonio</b>	17319 San Pedro Ave Ste 200 San Antonio, TX 78232 (210)349-3804 Fax (210)349-8724
<b>Northeast US</b>	2301 River Road Ste 201 Louisville, KY 40206 (502) 897-9800 Cell (502) 554-2575
<b>Georgia</b>	111 Woodstone Place Dawsonville, GA 30534 (678) 725-8852 Fax (210) 349-8724
<b>South Texas</b>	PO BOX 125 206 Doral Drive Portland, TX 78374 (361) 563-5599 Fax (361) 643-6533

This drawing is the property of Chandler Signs, LLC. All rights to its use for reproduction are reserved by Chandler Signs, LLC.

**FINAL ELECTRICAL CONNECTION BY CUSTOMER**

THIS SIGN IS INTENDED TO BE INSTALLED IN ACCORDANCE WITH ARTICLE 600 OF THE NATIONAL ELECTRICAL CODE AND/OR OTHER APPLICABLE LOCAL CODES. THIS INCLUDES PROPER GROUNDING & BONDING OF THE SIGN. SIGN WILL BEAR UL LABEL(S).





**FRONT ELEVATION**

SCALE: 3/32" = 1'-0"

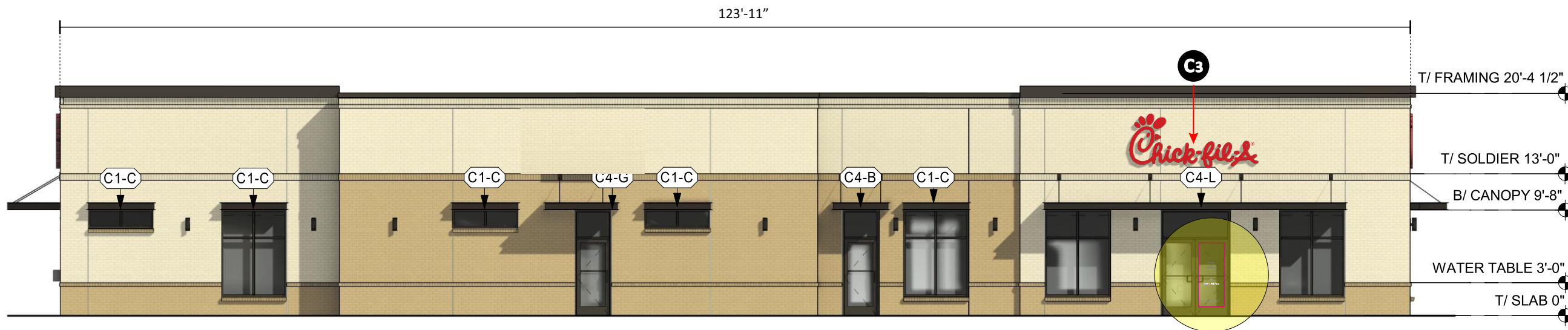
SIGN SQ. FT. 38



**REAR ELEVATION**

SCALE: 3/32" = 1'-0"

SIGN SQ. FT. 38



**MAIN ELEVATION**

SCALE: 3/32" = 1'-0"

SIGN SQ. FT. 38



**DRIVE THRU ELEVATION**

SCALE: 3/32" = 1'-0"

SIGN SQ. FT. 35

Design #

0634473AR6

Sheet 5 of 24

Client

#5405

Address

2701 W Morgan Ave.  
Milwaukee, WI 53221-1133

Account Rep. KRISTEN HAMILTON  
BRIAN HEAD

Designer LEAH LANSFORD

Date 1/3/23

Approval / Date

Client

Sales

Estimating

Art

Engineering

Landlord

Revision/Date

R1(03/06/2023)AM: UPDATED SITE PLAN

R2(04/11/2023)AM: UPDATED SITE PLAN AND  
UPDATED SIGN ID A WITH NEW 27' TALL MONUMENT  
WITH ICON AND READERBOARD. ALSO, UPDATED  
CREDIT CARD STRIP ON DOOR VINYL

R3(5/23/23)LL: UPDATED TO TWO OPTIONS FOR SIGN  
A, CHANGED A AND B TO BE ROSE

R4(5/10/23)LL: ADDED SPEC CALLOUTS FOR ROSE  
DELETED OPTION 1 FOR SIGN A AND CHANGED  
DIMS FOR OPTION 2. ADDED NIGHT VIEW FOR  
MONUMENT AND WALL SIGN

R5(05/24/2023)AM: CHANGES REQUESTED

SIGN A NEEDS TO INVERT THE COLORS OF THE  
READER BOARD  
REMOVE THE CALL OUT ON THE SITE PLAN FOR  
THE 'EXISTING MONUMENT SIGN'  
SIGN B - PLEASE SPELL OUT THE ROUTE OUT  
SHOW THROUGH DESCRIPTION AND ADD CALL  
OUTS FOR ILLUMINATED ACRYLIC AND PAINTED  
ALUMINUM PARTS OF THE SIGN ON THE  
RENDERING



National Headquarters 14201 Sovereign Road #101  
Fort Worth, TX 76155  
(214)992-2000 Fax (214)992-2044

San Antonio 17319 San Pedro Ave  
Ste 200  
San Antonio, TX 78232  
(210)349-3804 Fax (210)349-8724

Northeast US 2301 River Road Ste 201  
Louisville, KY 40206  
(502) 897-9800 Cell (502) 554-2575

Georgia 111 Woodstone Place  
Dawsonville, GA 30534  
(678) 725-8852 Fax (210) 349-8724

South Texas PO BOX 125 206 Doral Drive  
Portland, TX 78374  
(361) 563-5599 Fax (361) 643-6533

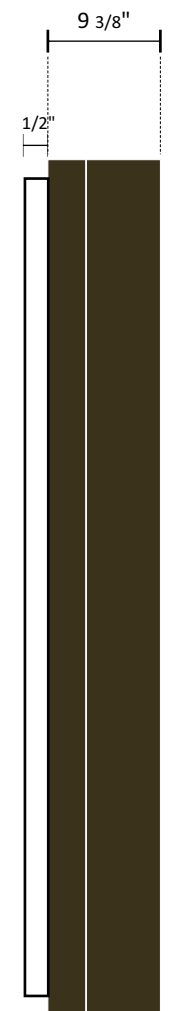
This drawing is the property of  
Chandler Signs, LLC  
All rights to its use for reproduction  
are reserved by Chandler Signs, LLC

**FINAL ELECTRICAL  
CONNECTION BY  
CUSTOMER**

THIS SIGN IS INTENDED TO BE INSTALLED  
IN ACCORDANCE WITH ARTICLE 600 OF THE  
NATIONAL ELECTRICAL CODE AND/OR OTHER  
APPLICABLE LOCAL CODES. THIS INCLUDES  
PROPER GROUNDING & BONDING OF THE SIGN.  
SIGN WILL BEAR UL LABEL(S).



**ELEVATIONS**



**END VIEW**

**B CFA - S/F ROUTE OUT PUSH THRU WALL SIGN** SCALE: 3/4" = 1'-0"  
 ONE ( 1 ) REQUIRED - MANUFACTURE AND INSTALL **35 SQ. FT.**

S/F ALUM. WALL CABINET WITH RETAINERS PAINTED #74155 DK BRONZE SEMIGLOSS. WITH ALUM MAIN ID FACE PAINTED GENESIS M SINGLE STAGE (G2-SERIES) RED #48247 BACKED WITH #7328 WHITE ACRYLIC. INTERNALLY ILLUMINATED 7100K WHITE LED'S. PAINTED GENESIS M SINGLE STAGE (G2-SERIES) RED #48247 WITH ROUTE OUT SHOW THRU LOGO.

PLEASE NOTE: ONLY WHITE OF MAIN ID/LOGO WILL LIGHT UP. RED OF CABINET FACE **WILL NOT** LIGHT UP



**NIGHT VIEW**

**DAL - MANUFACTURING**  
**NEW CFA LOGO**

<b>Design #</b>	0634473AR6
<b>Sheet</b>	6 of 24
<b>Client</b>	#5405
<b>Address</b>	2701 W Morgan Ave. Milwaukee, WI 53221-1133
<b>Account Rep.</b>	KRISTEN HAMILTON BRIAN HEAD
<b>Designer</b>	LEAH LANSFORD
<b>Date</b>	1/3/23
<b>Approval / Date</b>	
<b>Client</b>	
<b>Sales</b>	
<b>Estimating</b>	
<b>Art</b>	
<b>Engineering</b>	
<b>Landlord</b>	
<b>Revision/Date</b>	
R1(03/06/2023)AM: UPDATED SITE PLAN	
R2(04/11/2023)AM: UPDATED SITE PLAN AND UPDATED SIGN ID A WITH NEW 27" TALL MONUMENT WITH ICON AND READERBOARD. ALSO, UPDATED CREDIT CARD STRIP ON DOOR VINYL	
R3(5/23/23)LL: UPDATED TO TWO OPTIONS FOR SIGN A. CHANGED A AND B TO BE ROST	
R4(5/10/23)LL: ADDED SPEC CALLOUTS FOR ROST. DELETED OPTION 1 FOR SIGN A AND CHANGED DIMS FOR OPTION 2. ADDED NIGHT VIEW FOR MONUMENT AND WALL SIGN	
R5(05/24/2023)AM: CHANGES REQUESTED	
SIGN A NEEDS TO INVERT THE COLORS OF THE READER BOARD	
REMOVE THE CALL OUT ON THE SITE PLAN FOR THE 'EXISTING MONUMENT SIGN'	
SIGN B - PLEASE SPELL OUT THE ROUTE OUT SHOW THRU THROUGH DESCRIPTION AND ADD CALLOUTS FOR ILLUMINATED ACRYLIC AND PAINTED ALUMINUM PARTS OF THE SIGN ON THE RENDERING	



<b>National Headquarters</b>	14201 Sovereign Road #101 Fort Worth, TX 76155 (214)992-2000 Fax (214)992-2044
<b>San Antonio</b>	17319 San Pedro Ave Ste 200 San Antonio, TX 78232 (210)349-3804 Fax (210)349-8724
<b>Northeast US</b>	2301 River Road Ste 201 Louisville, KY 40206 (502) 897-9800 Cell (502) 554-2575
<b>Georgia</b>	111 Woodstone Place Dawsonville, GA 30534 (678) 725-8852 Fax (210) 349-8724
<b>South Texas</b>	PO BOX 125 206 Doral Drive Portland, TX 78374 (361) 563-5599 Fax (361) 643-6533

This drawing is the property of Chandler Signs, LLC. All rights to its use for reproduction are reserved by Chandler Signs, LLC.

**FINAL ELECTRICAL CONNECTION BY CUSTOMER**

THIS SIGN IS INTENDED TO BE INSTALLED IN ACCORDANCE WITH ARTICLE 600 OF THE NATIONAL ELECTRICAL CODE AND/OR OTHER APPLICABLE LOCAL CODES. THIS INCLUDES PROPER GROUNDING & BONDING OF THE SIGN. SIGN WILL BEAR UL LABEL(S).





**C1-3** CFA - PCL 5-0  
 THREE ( 3 ) REQUIRED - MANUFACTURE AND INSTALL

SCALE: 3/4" = 1'-0"

LIVE AREA: 38 SQ. FT.  
 OVERALL AREA: 59 SQ. FT.

[SEE SECTION DETAIL](#)

DAL - MANUFACTURING  
 NEW CFA LOGO

<b>Design #</b>	0634473AR6
<b>Sheet</b>	7 of 24
<b>Client</b>	#5405
<b>Address</b>	2701 W Morgan Ave. Milwaukee, WI 53221-1133
<b>Account Rep.</b>	KRISTEN HAMILTON BRIAN HEAD
<b>Designer</b>	LEAH LANSFORD
<b>Date</b>	1/3/23

Approval / Date	
Client	
Sales	
Estimating	
Art	
Engineering	
Landlord	

Revision/Date
R1(03/06/2023)AM: UPDATED SITE PLAN
R2(04/11/2023)AM: UPDATED SITE PLAN AND UPDATED SIGN ID A WITH NEW 27" TALL MONUMENT WITH ICON AND READERBOARD. ALSO, UPDATED CREDIT CARD STRIP ON DOOR VINYL
R3(5/23/23)LL: UPDATED TO TWO OPTIONS FOR SIGN A, CHANGED A AND B TO BE ROST
R4(5/10/23)LL: ADDED SPEC CALLOUTS FOR ROST. DELETED OPTION 1 FOR SIGN A AND CHANGED DIMS FOR OPTION 2. ADDED NIGHT VIEW FOR MONUMENT AND WALL SIGN
R5(05/24/2023)AM: CHANGES REQUESTED SIGN A NEEDS TO INVERT THE COLORS OF THE READER BOARD REMOVE THE CALL OUT ON THE SITE PLAN FOR THE 'EXISTING MONUMENT SIGN' SIGN B - PLEASE SPELL OUT THE ROUTE OUT SHOW THROUGH DESCRIPTION AND ADD CALLOUTS FOR ILLUMINATED ACRYLIC AND PAINTED ALUMINUM PARTS OF THE SIGN ON THE RENDERING



<b>National Headquarters</b>	14201 Sovereign Road #101 Fort Worth, TX 76155 (214)902-2000 Fax (214)902-2044
<b>San Antonio</b>	17319 San Pedro Ave Ste 200 San Antonio, TX 78232 (210)349-3804 Fax (210)349-8724
<b>Northeast US</b>	2301 River Road Ste 201 Louisville, KY 40206 (502) 897-9800 Cell (502) 554-2575
<b>Georgia</b>	111 Woodstone Place Dawsonville, GA 30534 (678) 725-8852 Fax (210) 349-8724
<b>South Texas</b>	PO BOX 125 206 Doral Drive Portland, TX 78374 (361) 563-5599 Fax (361) 643-6533

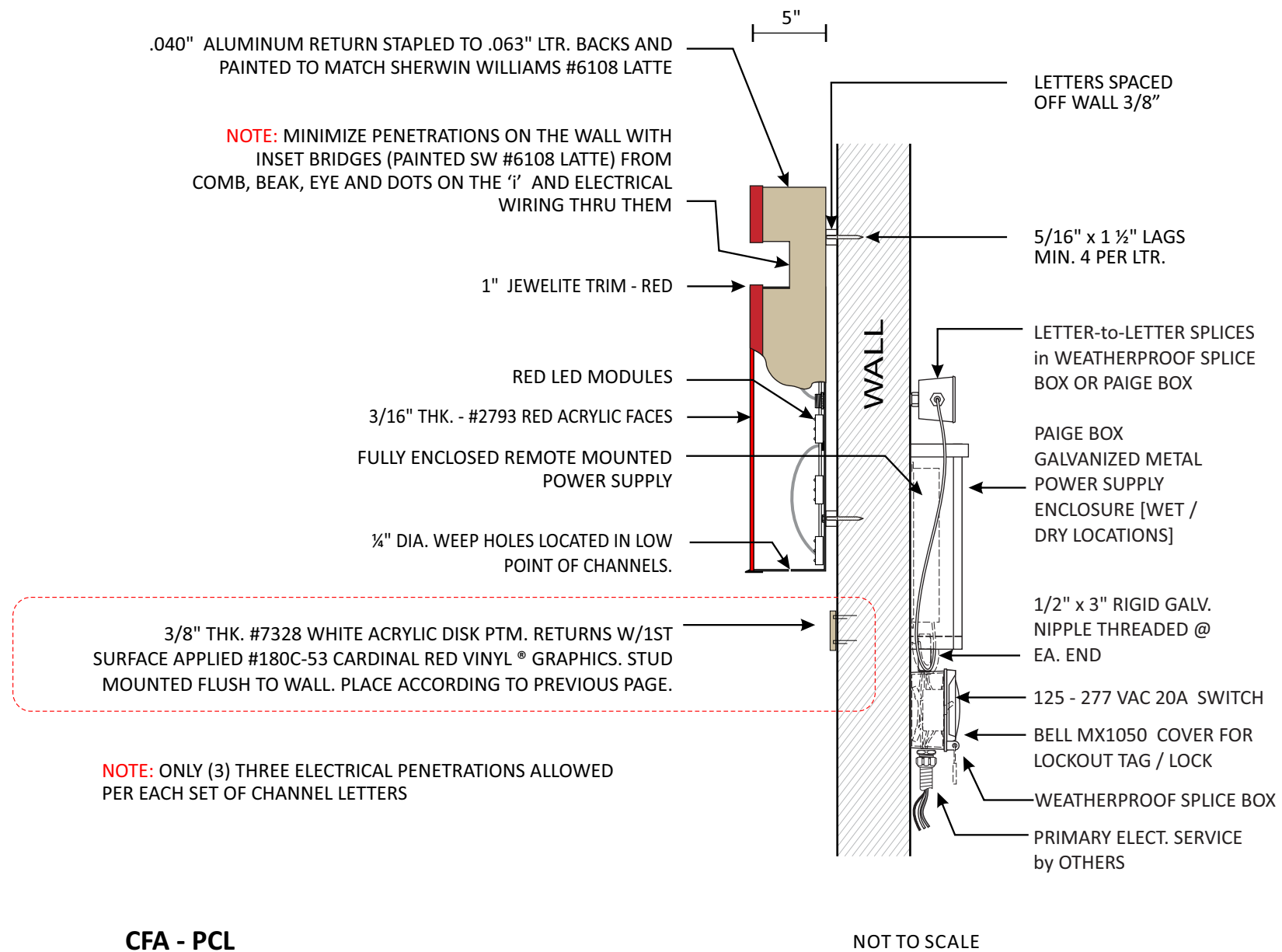
This drawing is the property of Chandler Signs, LLC. All rights to its use for reproduction are reserved by Chandler Signs, LLC.

**FINAL ELECTRICAL CONNECTION BY CUSTOMER**

THIS SIGN IS INTENDED TO BE INSTALLED IN ACCORDANCE WITH ARTICLE 600 OF THE NATIONAL ELECTRICAL CODE AND/OR OTHER APPLICABLE LOCAL CODES. THIS INCLUDES PROPER GROUNDING & BONDING OF THE SIGN. SIGN WILL BEAR UL LABEL(S).



**C1-3**



CFA - PCL

NOT TO SCALE

Design #

0634473AR6

Sheet 8 of 24

Client

#5405

Address

2701 W Morgan Ave.  
Milwaukee, WI 53221-1133

Account Rep. KRISTEN HAMILTON  
BRIAN HEAD

Designer LEAH LANSFORD

Date 1/3/23

Approval / Date

Client

Sales

Estimating

Art

Engineering

Landlord

Revision/Date

R1(03/06/2023)AM: UPDATED SITE PLAN

R2(04/11/2023)AM: UPDATED SITE PLAN AND UPDATED SIGN ID A WITH NEW 27" TALL MONUMENT WITH ICON AND READERBOARD. ALSO, UPDATED CREDIT CARD STRIP ON DOOR VINYL

R3(5/23/23)LL: UPDATED TO TWO OPTIONS FOR SIGN A, CHANGED A AND B TO BE ROST

R4(5/10/23)LL: ADDED SPEC CALLOUTS FOR ROST. DELETED OPTION 1 FOR SIGN A AND CHANGED DIMS FOR OPTION 2. ADDED NIGHT VIEW FOR MONUMENT AND WALL SIGN

R5(05/24/2023)AM: CHANGES REQUESTED

SIGN A NEEDS TO INVERT THE COLORS OF THE READER BOARD  
REMOVE THE CALL OUT ON THE SITE PLAN FOR THE 'EXISTING MONUMENT SIGN'  
SIGN B - PLEASE SPELL OUT THE ROUTE OUT SHOW THROUGH DESCRIPTION AND ADD CALL OUTS FOR ILLUMINATED ACRYLIC AND PAINTED ALUMINUM PARTS OF THE SIGN ON THE RENDERING



National Headquarters 14201 Sovereign Road #101  
Fort Worth, TX 76155  
(214)992-2000 Fax (214)992-2044

San Antonio 17319 San Pedro Ave  
Ste 200  
San Antonio, TX 78232  
(210)349-3804 Fax (210)349-8724

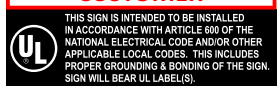
Northeast US 2301 River Road Ste 201  
Louisville, KY 40206  
(502) 897-9800 Cell (502) 554-2575

Georgia 111 Woodstone Place  
Dawsonville, GA 30534  
(678) 725-8852 Fax (210) 349-8724

South Texas PO BOX 125 206 Doral Drive  
Portland, TX 78374  
(361) 563-5599 Fax (361) 643-6533

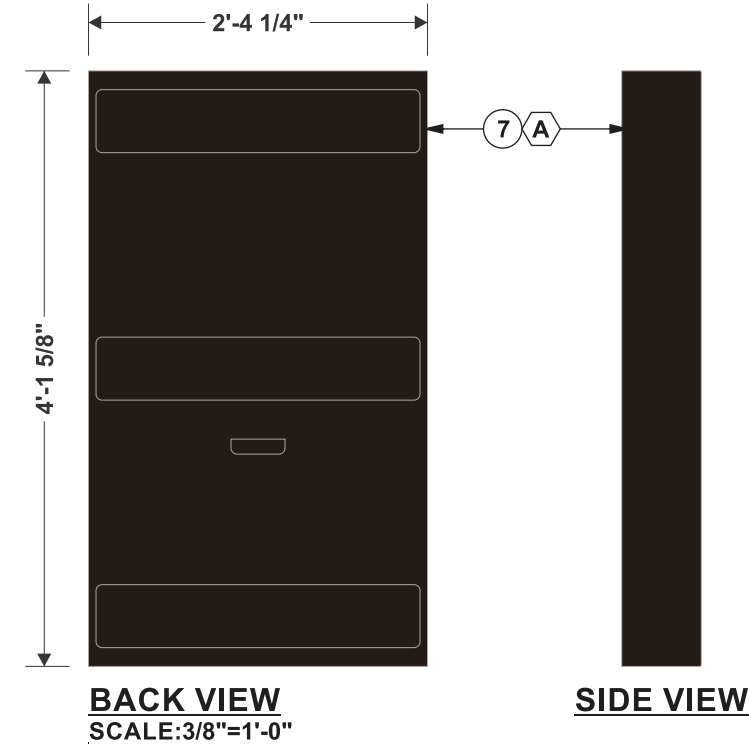
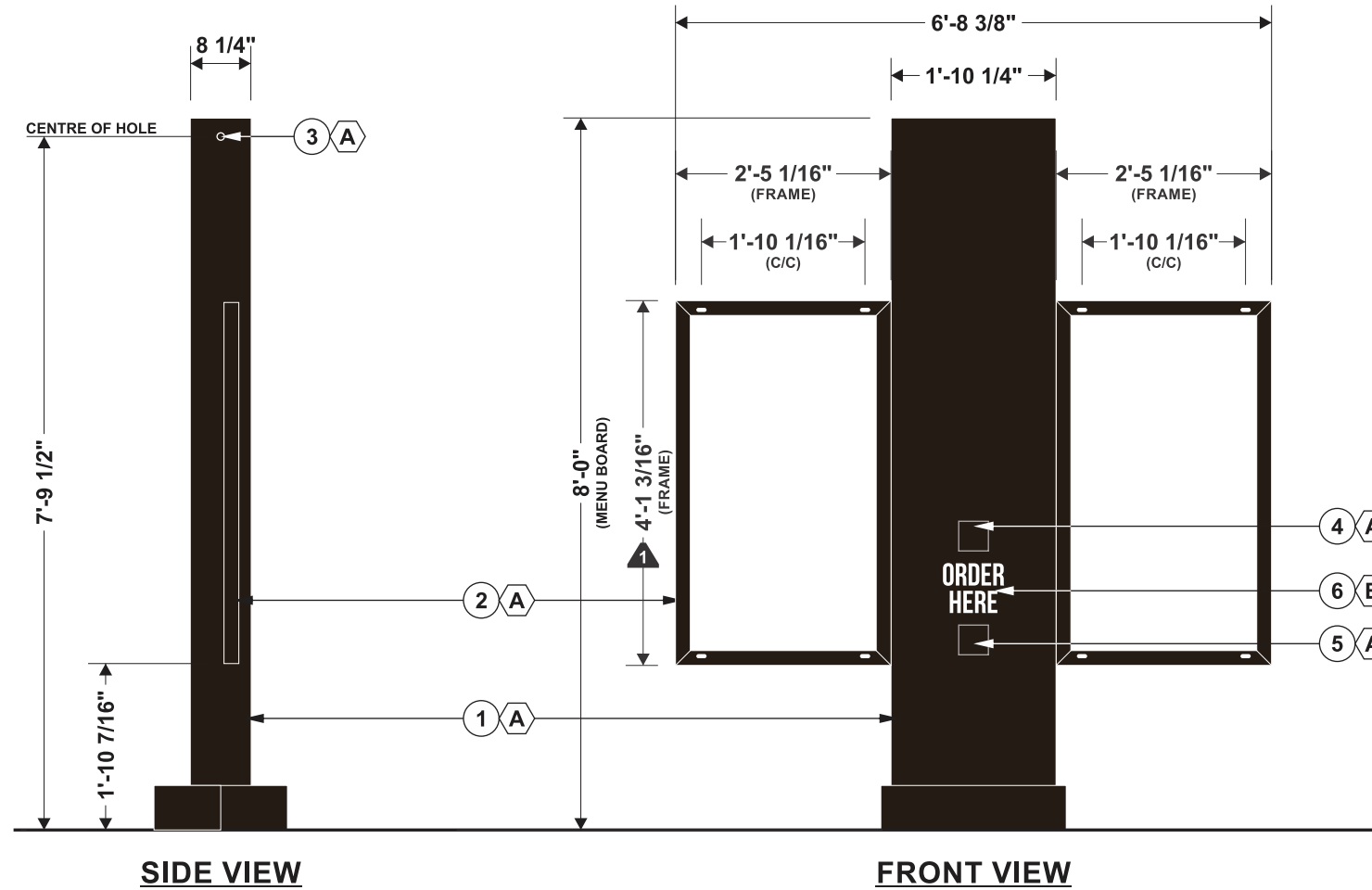
This drawing is the property of Chandler Signs, LLC. All rights to its use for reproduction are reserved by Chandler Signs, LLC

**FINAL ELECTRICAL CONNECTION BY CUSTOMER**



C1-3





<b>Design #</b>	0634473AR6
<b>Sheet</b>	9 of 24
<b>Client</b>	#5405
<b>Address</b>	2701 W Morgan Ave. Milwaukee, WI 53221-1133
<b>Account Rep.</b>	KRISTEN HAMILTON BRIAN HEAD
<b>Designer</b>	LEAH LANSFORD
<b>Date</b>	1/3/23
<b>Approval / Date</b>	
<b>Client</b>	
<b>Sales</b>	
<b>Estimating</b>	
<b>Art</b>	
<b>Engineering</b>	
<b>Landlord</b>	

Revision/Date	
R1(03/06/2023)AM: UPDATED SITE PLAN	
R2(04/11/2023)AM: UPDATED SITE PLAN AND UPDATED SIGN ID A WITH NEW 27" TALL MONUMENT WITH ICON AND READERBOARD. ALSO, UPDATED CREDIT CARD STRIP ON DOOR VINYL	
R3(5/23/23)LL: UPDATED TO TWO OPTIONS FOR SIGN A, CHANGED A AND B TO BE ROST	
R4(5/10/23)LL: ADDED SPEC CALLOUTS FOR ROST. DELETED OPTION 1 FOR SIGN A AND CHANGED DIMS FOR OPTION 2. ADDED NIGHT VIEW FOR MONUMENT AND WALL SIGN	
R5(05/24/2023)AM: CHANGES REQUESTED	

**D1 D2 CFA - C7 DIGITAL ORDERING STATION** SCALE: 1/2" = 1'-0"  
 TWO ( 2 ) REQUIRED - MANUFACTURE & INSTALL

<b>CHF10ME3AX0001</b>	
<b>DRIVE-THRU MENU BOARD</b>	
Installation:	<input type="checkbox"/> Interior: <input checked="" type="checkbox"/> Exterior:
Electrical specifications:	
Volts:	120 Amp.: 1.4 Circ.: 2
#	Descriptions:
1	FABRICATED C-CHANNEL STRUCTURE COVERED WITH ALUMINUM
2	2"X 2" STEEL ANGLES FRAME BOLTED TO STRUCTURE (TO HOLD DISPLAYS)
3	PLASTIC BUSHINGS (ONE EACH SIDE)
4	SPEAKER
5	MICROPHONE
6	VINYL DECAL APPLIED TO FIRST SURFACE
7	ALUMINUM ENCLOSURE FOR DISPLAY (2X)

#	Colors:
A	PAINTED CFA BRONZE
B	WHITE REFLECTIVE VINYL #680-10

ORDERING STATIONS SUPPLIED BY CUSTOMER.  
 CHANDLER SIGNS TO PROVIDE TEMPLATES AND ANCHOR BOLTS.  
 GEN. CONTRACTOR TO SET ANCHOR BOLTS AND POUR CONCRETE.  
 CHANDLER SIGNS TO INSTALL ORDERING STATIONS.

**CHANDLER SIGNS**

National Headquarters: 14201 Sovereign Road #101 Fort Worth, TX 76155 (214)992-2000 Fax (214)992-2044

San Antonio: 17319 San Pedro Ave Ste 200 San Antonio, TX 78232 (210)349-3804 Fax (210)349-8724

Northeast US: 2301 River Road Ste 201 Louisville, KY 40206 (502) 897-9800 Cell (502) 554-2575

Georgia: 111 Woodstone Place Dawsonville, GA 30534 (678) 725-8852 Fax (210) 349-8724

South Texas: PO BOX 125 206 Doral Drive Portland, TX 78374 (361) 563-5599 Fax (361) 643-6533

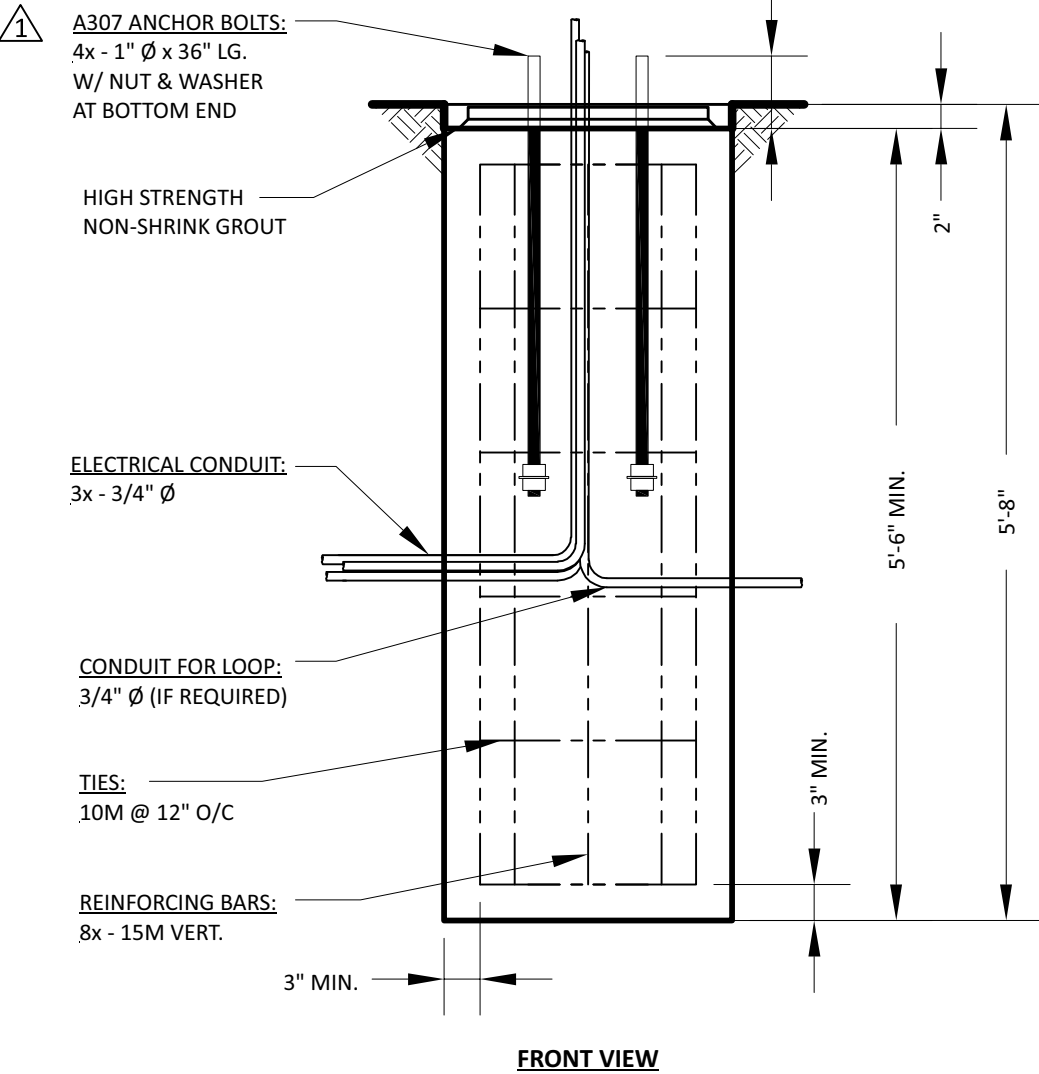
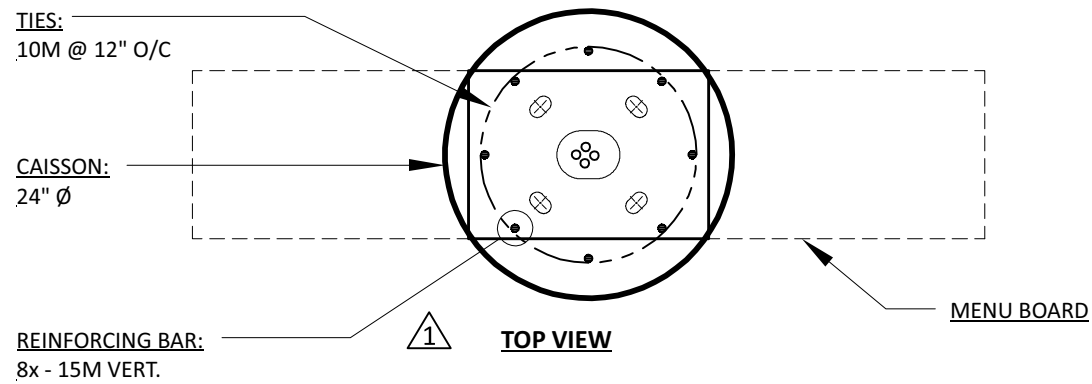
This drawing is the property of Chandler Signs, LLC. All rights to its use for reproduction are reserved by Chandler Signs, LLC.

**FINAL ELECTRICAL CONNECTION BY CUSTOMER**

THIS SIGN IS INTENDED TO BE INSTALLED IN ACCORDANCE WITH ARTICLE 600 OF THE NATIONAL ELECTRICAL CODE AND/OR OTHER APPLICABLE LOCAL CODES. THIS INCLUDES PROPER GROUNDING & BONDING OF THE SIGN. SIGN WILL BEAR UL LABEL(S).

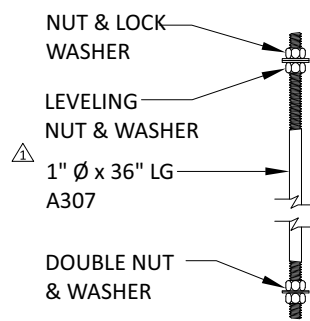
**Chick-fil-A**

**D1-3**

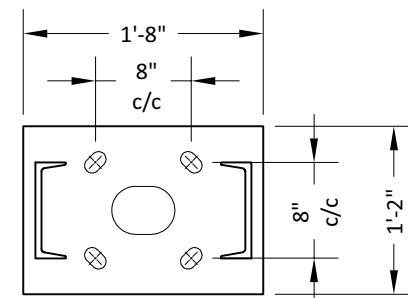


**General Notes:**

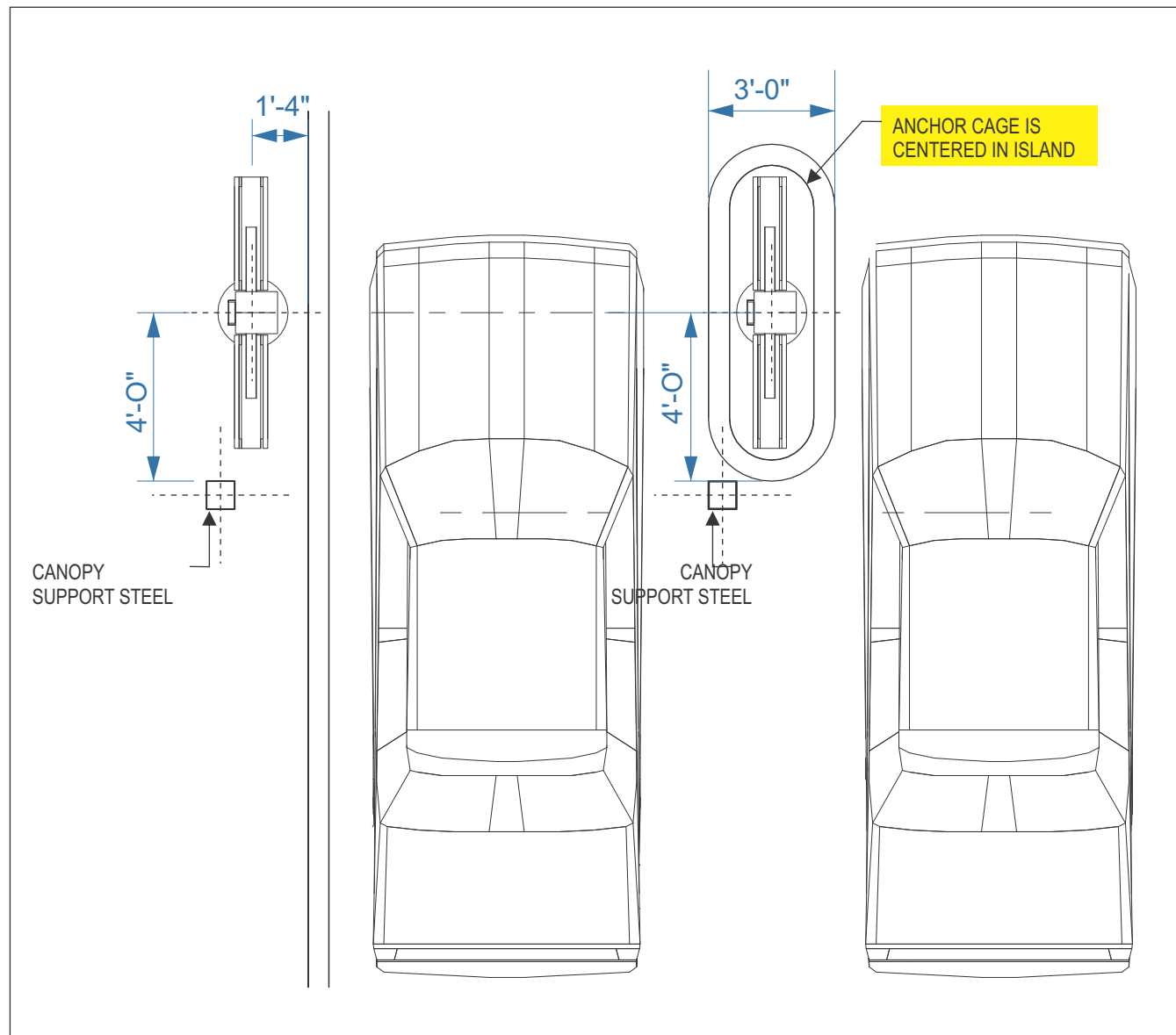
- MINIMUM CONCRETE RESISTANCE OF 3600 PSI AFTER 28 DAYS
- THE GROUND MUST NOT BE ALTERED AND MUST BE WELL DRAINED
- FOUNDATION IS BASE ON SAFE LATERAL SOIL BEARING PRESSURE MINIMUM OF 150 PSF PER FOOT OF DEPTH. SOIL REPORT WAS NOT FURNISHED. ALLOWABLE BEARING PRESSURE SHOULD BE VERIFIED PRIOR TO PLACEMENT OF CONCRETE. DO NOT PLACE FOUNDATION FILL.
- ALL BACKFILLED TO BE PLACE IN COMPACTED LAYERS COMPACTED TO 95% MODIFIED PROCTOR DENSITY
- ELECTRICAL CONDUIT TO BE AS PER CITY CODE
- ALL VOIDS BETWEEN COLUMN BASE PLATE AND FOUNDATION SURFACE SHALL BE COMPLETELY FILLED WITH HIGH STRENGTH, NON-SHRINK GROUT



**ANCHOR BOLT DETAIL**  
QTY: 4x



**TOP VIEW**  
BASE PLATE DETAIL  
SCALE: 3/4" = 1'-0"



**CHANDLER SIGNS TO PROVIDE TEMPLATES AND ANCHOR BOLTS.  
GEN. CONTRACTOR TO INSTALL ANCHOR BOLTS AND POUR CONCRETE.  
CHANDLER SIGNS TO INSTALL ORDERING STATIONS.**

<b>HH1-44086-5</b>			
<b>CONCRETE BASE PLAN FOR CFA ORDER POINT 6'-5"</b>			
INSTALLATION:	- INTERIOR	X EXTERIOR	
ELECTRICAL SPECIFICATIONS:		WEIGHT:	000lbs
VOLTS:	---	AMP:	---
		CIRC:	---
POST: BY OTHERS	HSS 6" x 6" x 0.12" Tk. A500		
PLATE: BY OTHERS	14" Ø x 5/8" Tk.		
VOLUME:	0.64 CU. YD.		
$q 1/50 = 0.37 \text{ kPa}$	$S_6 = 2.00 \text{ kPa}$	$S_r = 0.40 \text{ kPa}$	

<b>Design #</b>	0634473AR6
<b>Sheet</b>	10 of 24
<b>Client</b>	#5405
<b>Address</b>	2701 W Morgan Ave. Milwaukee, WI 53221-1133
<b>Account Rep.</b>	KRISTEN HAMILTON BRIAN HEAD
<b>Designer</b>	LEAH LANSFORD
<b>Date</b>	1/3/23
<b>Approval / Date</b>	
<b>Client</b>	
<b>Sales</b>	
<b>Estimating</b>	
<b>Art</b>	
<b>Engineering</b>	
<b>Landlord</b>	

<b>Revision/Date</b>	
R1(03/06/2023)AM: UPDATED SITE PLAN	
R2(04/11/2023)AM: UPDATED SITE PLAN AND UPDATED SIGN ID A WITH NEW 27" TALL MONUMENT WITH ICON AND READERBOARD. ALSO, UPDATED CREDIT CARD STRIP ON DOOR VINYL	
R3(5/23/23)LL: UPDATED TO TWO OPTIONS FOR SIGN A, CHANGED A AND B TO BE ROSt	
R4(5/10/23)LL: ADDED SPEC CALLOUTS FOR ROSt, DELETED OPTION 1 FOR SIGN A AND CHANGED DIMS FOR OPTION 2. ADDED NIGHT VIEW FOR MONUMENT AND WALL SIGN	
R5(05/24/2023)AM: CHANGES REQUESTED	



<b>National Headquarters</b>	14201 Sovereign Road #101 Fort Worth, TX 76155 (214)992-2000 Fax (214)992-2044
<b>San Antonio</b>	17319 San Pedro Ave Ste 200 San Antonio, TX 78232 (210)349-3804 Fax (210)349-8724
<b>Northeast US</b>	2301 River Road Ste 201 Louisville, KY 40206 (502) 897-9800 Cell (502) 554-2575
<b>Georgia</b>	111 Woodstone Place Dawsonville, GA 30534 (678) 725-8852 Fax (210) 349-8724
<b>South Texas</b>	PO BOX 125 206 Doral Drive Portland, TX 78374 (361) 563-5599 Fax (361) 643-6533

This drawing is the property of Chandler Signs, LLC. All rights to its use for reproduction are reserved by Chandler Signs, LLC.

**FINAL ELECTRICAL CONNECTION BY CUSTOMER**

THIS SIGN IS INTENDED TO BE INSTALLED IN ACCORDANCE WITH ARTICLE 600 OF THE NATIONAL ELECTRICAL CODE AND/OR OTHER APPLICABLE LOCAL CODES. THIS INCLUDES PROPER GROUNDING & BONDING OF THE SIGN. SIGN WILL BEAR UL LABEL(S).

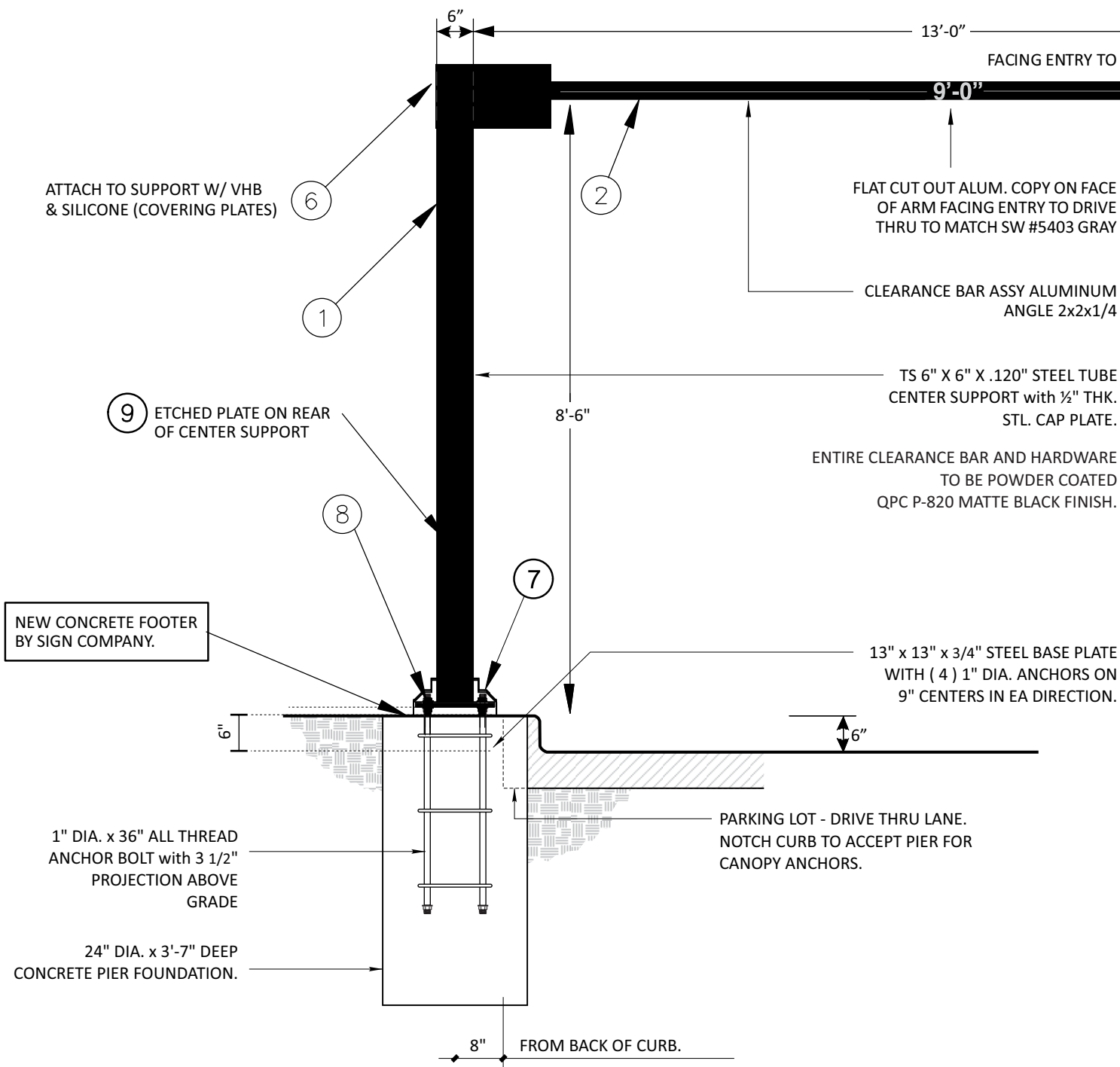




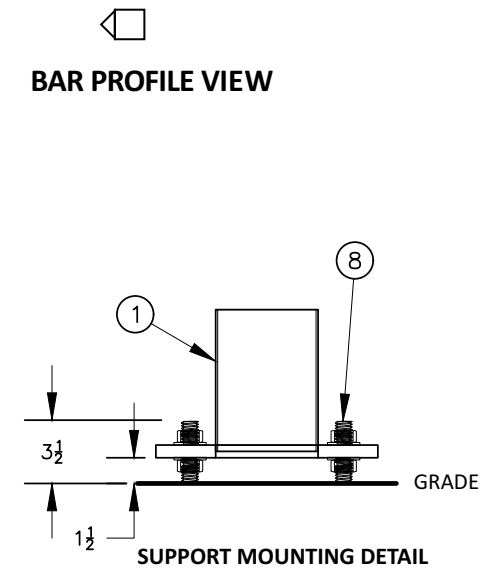
**TOP VIEW**

ARM ASSEMBLY BOLTS TO CENTER SUPPORT AND CAN BE CHANGED OUT IN THE FIELD

**FCOs TO BE SHIPPED LOOSELY AND APPLIED ON ARM FACING TRAFFIC AT INSTALL LOCATION**



**FRONT VIEW**



**BAR PROFILE VIEW**

**SUPPORT MOUNTING DETAIL**

ITEM	QUANTITY	DESCRIPTION
1	1	CENTER POST ASSEMBLY, 6" X 6" STEEL
2	1	CLEARANCE BAR ASSEMBLY, 2" X 2" ALUM ANGLE
6	1	TOP COVER, .125" ALUM, BREAK FORMED
7	1	BASE COVER, .08" ALUM, BREAK FORMED
8	4	1" X 36" LONG, ALL TREAD ANCHORS, INCLUDING NUTS AND WASHERS
9	1	CLEARANCE BAR ID PLATE

**Notes:**

- ENTIRE CLEARANCE BAR AND HARDWARE TO BE POWDER-COATED P-820 MATTE BLACK FINISH
- CHANDLER TO PROVIDE ALL-THREAD ANCHORS WITH FENDER WASHERS AND HEX BOLTS
- GEN. CONTRACTOR TO POUR NEW CONCRETE FOOTER. FOUR ALL-THREAD ANCHORS TO BE EMBEDDED INTO FOOTER ON 9-INCH CENTERS
- SINGLE ARM BARS ARE SIZED FOR INSTALLATION ON 6" CURB

<b>Design #</b>	0634473AR6
<b>Sheet</b>	11 of 24
<b>Client</b>	#5405
<b>Address</b>	2701 W Morgan Ave. Milwaukee, WI 53221-1133
<b>Account Rep.</b>	KRISTEN HAMILTON BRIAN HEAD
<b>Designer</b>	LEAH LANSFORD
<b>Date</b>	1/3/23
<b>Approval / Date</b>	
<b>Client</b>	
<b>Sales</b>	
<b>Estimating</b>	
<b>Art</b>	
<b>Engineering</b>	
<b>Landlord</b>	

Revision/Date
R1(03/06/2023)AM: UPDATED SITE PLAN
R2(04/11/2023)AM: UPDATED SITE PLAN AND UPDATED SIGN ID A WITH NEW 27" TALL MONUMENT WITH ICON AND READERBOARD. ALSO, UPDATED CREDIT CARD STRIP ON DOOR VINYL
R3(5/23/23)LL: UPDATED TO TWO OPTIONS FOR SIGN A, CHANGED A AND B TO BE ROST
R4(9/10/23)LL: ADDED SPEC CALLOUTS FOR ROST. DELETED OPTION 1 FOR SIGN A AND CHANGED DIMS FOR OPTION 2. ADDED NIGHT VIEW FOR MONUMENT AND WALL SIGN
R5(05/24/2023)AM: CHANGES REQUESTED SIGN A NEEDS TO INVERT THE COLORS OF THE READER BOARD REMOVE THE CALL OUT ON THE SITE PLAN FOR THE 'EXISTING MONUMENT SIGN' SIGN B - PLEASE SPELL OUT THE ROUTE OUT SHOW THROUGH DESCRIPTION AND ADD CALL OUTS FOR ILLUMINATED ACRYLIC AND PAINTED ALUMINUM PARTS OF THE SIGN ON THE RENDERING



<b>National Headquarters</b>	14201 Sovereign Road #101 Fort Worth, TX 76155 (214)992-2000 Fax (214)992-2044
<b>San Antonio</b>	17319 San Pedro Ave Ste 200 San Antonio, TX 78232 (210)349-3804 Fax (210)349-8724
<b>Northeast US</b>	2301 River Road Ste 201 Louisville, KY 40206 (502) 897-9800 Cell (502) 554-2575
<b>Georgia</b>	111 Woodstone Place Dawsonville, GA 30534 (678) 725-8852 Fax (210) 349-8724
<b>South Texas</b>	PO BOX 125 206 Doral Drive Portland, TX 78374 (361) 563-5599 Fax (361) 643-6533

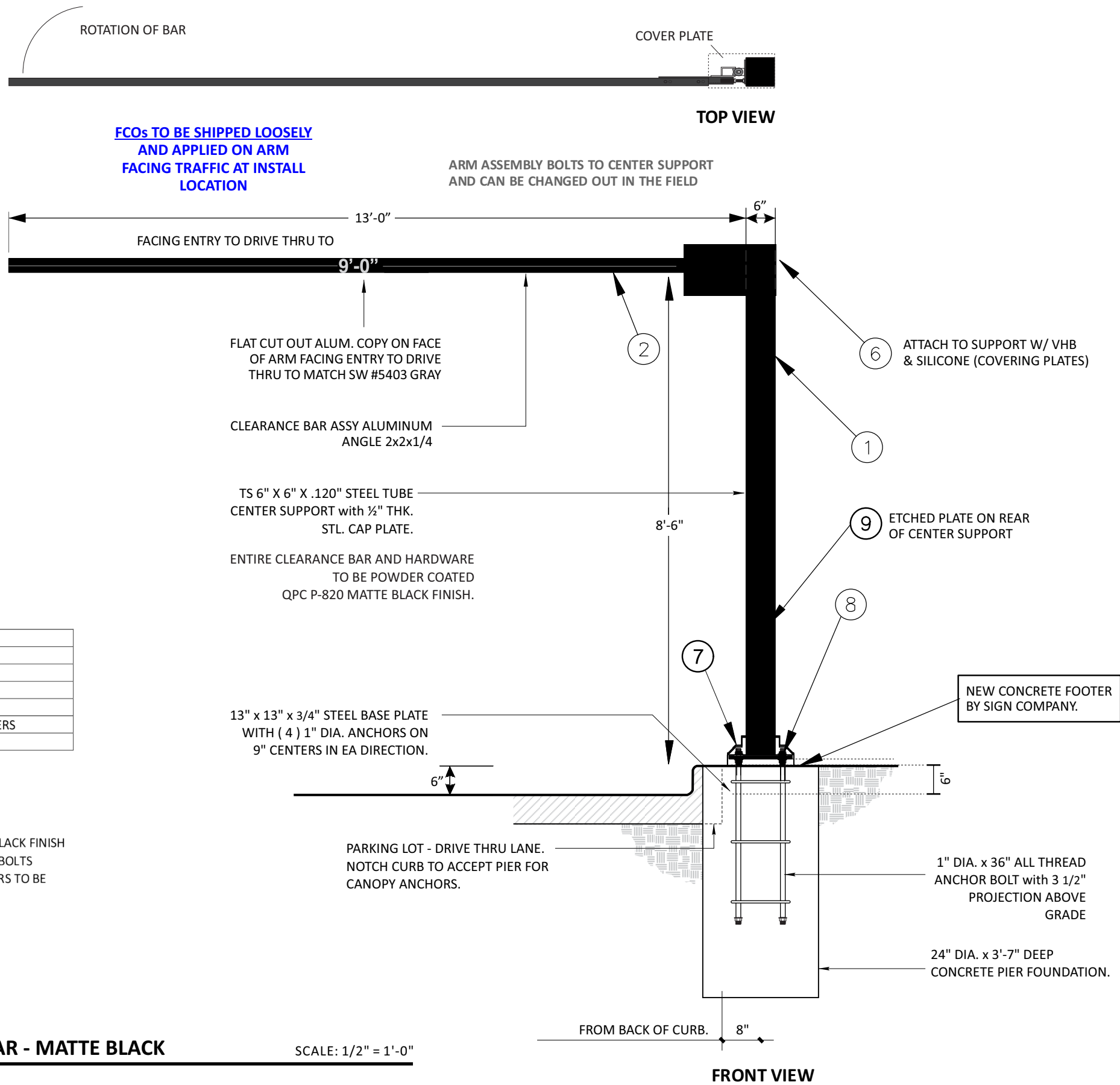
This drawing is the property of Chandler Signs, LLC. All rights to its use for reproduction are reserved by Chandler Signs, LLC.

**FINAL ELECTRICAL CONNECTION BY CUSTOMER**

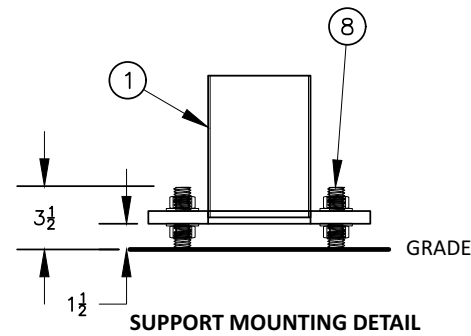
THIS SIGN IS INTENDED TO BE INSTALLED IN ACCORDANCE WITH ARTICLE 600 OF THE NATIONAL ELECTRICAL CODE AND/OR OTHER APPLICABLE LOCAL CODES. THIS INCLUDES PROPER GROUNDING & BONDING OF THE SIGN. SIGN WILL BEAR UL LABEL(S).



**E1**



**BAR PROFILE VIEW**



ITEM	QUANTITY	DESCRIPTION
1	1	CENTER POST ASSEMBLY, 6"X 6" STEEL
2	1	CLEARANCE BAR ASSEMBLY, 2" X 2" ALUM ANGLE
6	1	TOP COVER, .125" ALUM, BREAK FORMED
7	1	BASE COVER, .08" ALUM, BREAK FORMED
8	4	1" X 36" LONG, ALL TREAD ANCHORS, INCLUDING NUTS AND WASHERS
9	1	CLEARANCE BAR ID PLATE

**Notes:**

- ENTIRE CLEARANCE BAR AND HARDWARE TO BE POWDER-COATED P-820 MATTE BLACK FINISH
- CHANDLER TO PROVIDE ALL-THREAD ANCHORS WITH FENDER WASHERS AND HEX BOLTS
- GEN. CONTRACTOR TO POUR NEW CONCRETE FOOTER. FOUR ALL-THREAD ANCHORS TO BE EMBEDDED INTO FOOTER ON 9-INCH CENTERS
- SINGLE ARM BARS ARE SIZED FOR INSTALLATION ON 6" CURB

**E2**

**CFA - EXTENDED SINGLE ARM CLEARANCE BAR - MATTE BLACK**

SCALE: 1/2" = 1'-0"

ONE ( 1 ) REQUIRED - MANUFACTURE AND INSTALL

<b>Design #</b>	0634473AR6
<b>Sheet</b>	12 of 24
<b>Client</b>	#5405
<b>Address</b>	2701 W Morgan Ave. Milwaukee, WI 53221-1133
<b>Account Rep.</b>	KRISTEN HAMILTON BRIAN HEAD
<b>Designer</b>	LEAH LANSFORD
<b>Date</b>	1/3/23
<b>Approval / Date</b>	
<b>Client</b>	
<b>Sales</b>	
<b>Estimating</b>	
<b>Art</b>	
<b>Engineering</b>	
<b>Landlord</b>	

Revision/Date
R1(03/06/2023)AM: UPDATED SITE PLAN
R2(04/11/2023)AM: UPDATED SITE PLAN AND UPDATED SIGN ID A WITH NEW 27" TALL MONUMENT WITH ICON AND READERBOARD. ALSO, UPDATED CREDIT CARD STRIP ON DOOR VINYL
R3(5/23/23)LL: UPDATED TO TWO OPTIONS FOR SIGN A, CHANGED A AND B TO BE ROST
R4(9/10/23)LL: ADDED SPEC CALLOUTS FOR ROST. DELETED OPTION 1 FOR SIGN A AND CHANGED DIMS FOR OPTION 2. ADDED NIGHT VIEW FOR MONUMENT AND WALL SIGN
R5(05/24/2023)AM: CHANGES REQUESTED

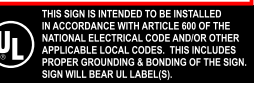
SIGN A NEEDS TO INVERT THE COLORS OF THE READER BOARD  
REMOVE THE CALL OUT ON THE SITE PLAN FOR THE 'EXISTING MONUMENT SIGN'  
SIGN B - PLEASE SPELL OUT THE ROUTE OUT SHOW THROUGH DESCRIPTION AND ADD CALLOUTS FOR ILLUMINATED ACRYLIC AND PAINTED ALUMINUM PARTS OF THE SIGN ON THE RENDERING



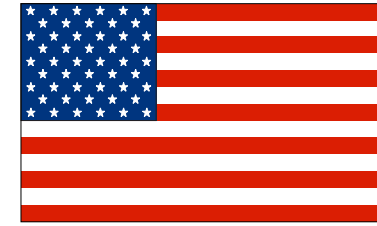
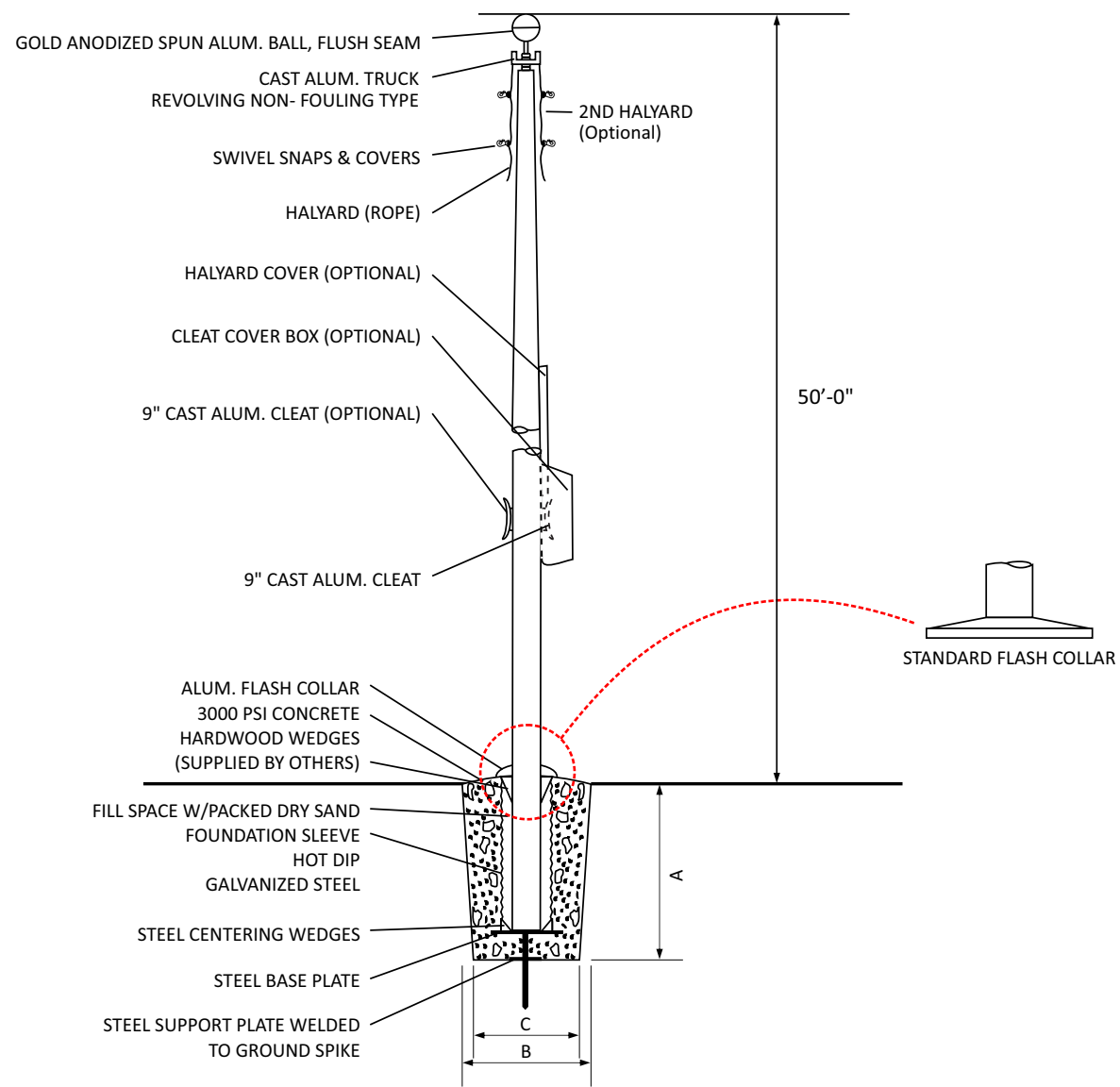
<b>National Headquarters</b>	14201 Sovereign Road #101 Fort Worth, TX 76155 (214)992-2000 Fax (214)992-2044
<b>San Antonio</b>	17319 San Pedro Ave Ste 200 San Antonio, TX 78232 (210)349-3804 Fax (210)349-8724
<b>Northeast US</b>	2301 River Road Ste 201 Louisville, KY 40206 (502) 897-9800 Cell (502) 554-2575
<b>Georgia</b>	111 Woodstone Place Dawsonville, GA 30534 (678) 725-8852 Fax (210) 349-8724
<b>South Texas</b>	PO BOX 125 206 Doral Drive Portland, TX 78374 (361) 563-5599 Fax (361) 643-6533

This drawing is the property of Chandler Signs, LLC. All rights to its use for reproduction are reserved by Chandler Signs, LLC

**FINAL ELECTRICAL CONNECTION BY CUSTOMER**



**E2**



FLAG PROVIDED BY CSI

FOUNDATION SIZES

HEIGHT	A	B	C	FLAG SIZE
20'	3'-6"	30"	24"	6'-10'
25'	3'-6"	30"	24"	6'-10'
30'	3'-6"	30"	24"	6'-10'
35'	4'-0"	36"	30"	6'-10'
40'	4'-6"	42"	36"	12'-18'
45'	5'-0"	48"	42"	12'-18'
50'	5'-6"	48"	42"	12'-18'

**F** CFA - FLAG 50 N.T.S.  
 ONE ( 1 ) REQUIRED - PROVIDE AND INSTALL

**Design #**  
0634473AR6

**Sheet** 13 of 24

**Client**  
#5405

**Address**  
2701 W Morgan Ave.  
Milwaukee, WI 53221-1133

**Account Rep.** KRISTEN HAMILTON  
BRIAN HEAD

**Designer** LEAH LANSFORD

**Date** 1/3/23

**Approval / Date**

**Client**

**Sales**

**Estimating**

**Art**

**Engineering**

**Landlord**

**Revision/Date**

R1(03/06/2023)AM: UPDATED SITE PLAN

R2(04/11/2023)AM: UPDATED SITE PLAN AND UPDATED SIGN ID A WITH NEW 27' TALL MONUMENT WITH ICON AND READERBOARD. ALSO, UPDATED CREDIT CARD STRIP ON DOOR VINYL

R3(5/23/23)LL: UPDATED TO TWO OPTIONS FOR SIGN A, CHANGED A AND B TO BE ROST

R4(5/10/23)LL: ADDED SPEC CALLOUTS FOR ROST, DELETED OPTION 1 FOR SIGN A AND CHANGED DIMS FOR OPTION 2. ADDED NIGHT VIEW FOR MONUMENT AND WALL SIGN

R5(05/24/2023)AM: CHANGES REQUESTED

SIGN A NEEDS TO INVERT THE COLORS OF THE READER BOARD  
 REMOVE THE CALL OUT ON THE SITE PLAN FOR THE 'EXISTING MONUMENT SIGN'  
 SIGN B - PLEASE SPELL OUT THE ROUTE OUT SHOW THROUGH DESCRIPTION AND ADD CALL OUTS FOR ILLUMINATED ACRYLIC AND PAINTED ALUMINUM PARTS OF THE SIGN ON THE RENDERING



**National Headquarters** 14201 Sovereign Road #101  
Fort Worth, TX 76155  
(214)992-2000 Fax (214)992-2044

**San Antonio** 17319 San Pedro Ave  
Ste 200  
San Antonio, TX 78232  
(210)349-3804 Fax (210)349-8724

**Northeast US** 2301 River Road Ste 201  
Louisville, KY 40206  
(502) 897-9800 Cell (502) 554-2575

**Georgia** 111 Woodstone Place  
Dawsonville, GA 30534  
(678) 725-8852 Fax (210) 349-8724

**South Texas** PO BOX 125 206 Doral Drive  
Portland, TX 78374  
(361) 563-5599 Fax (361) 643-6533

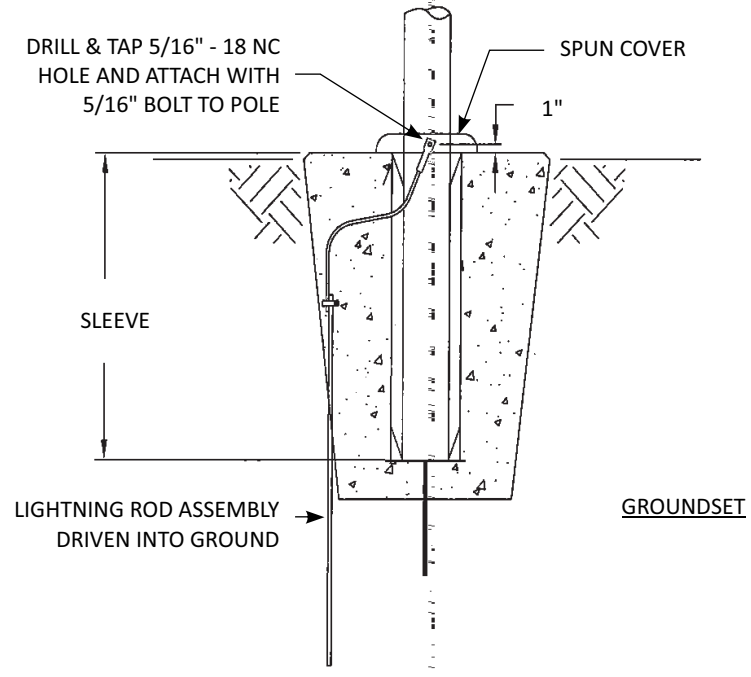
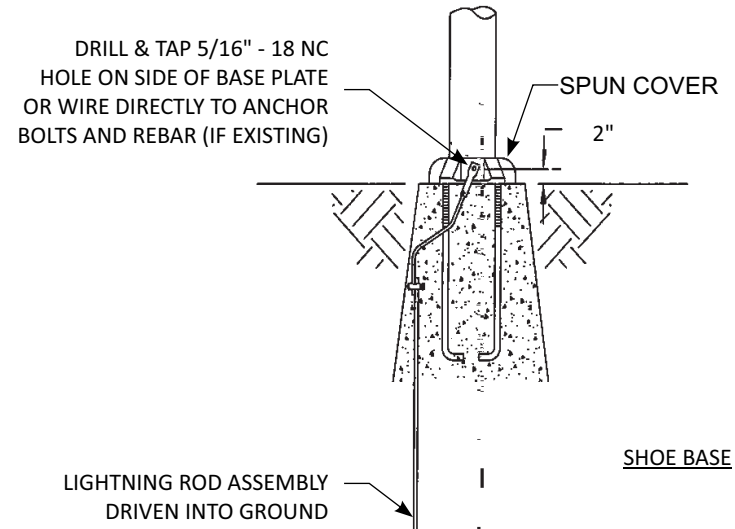
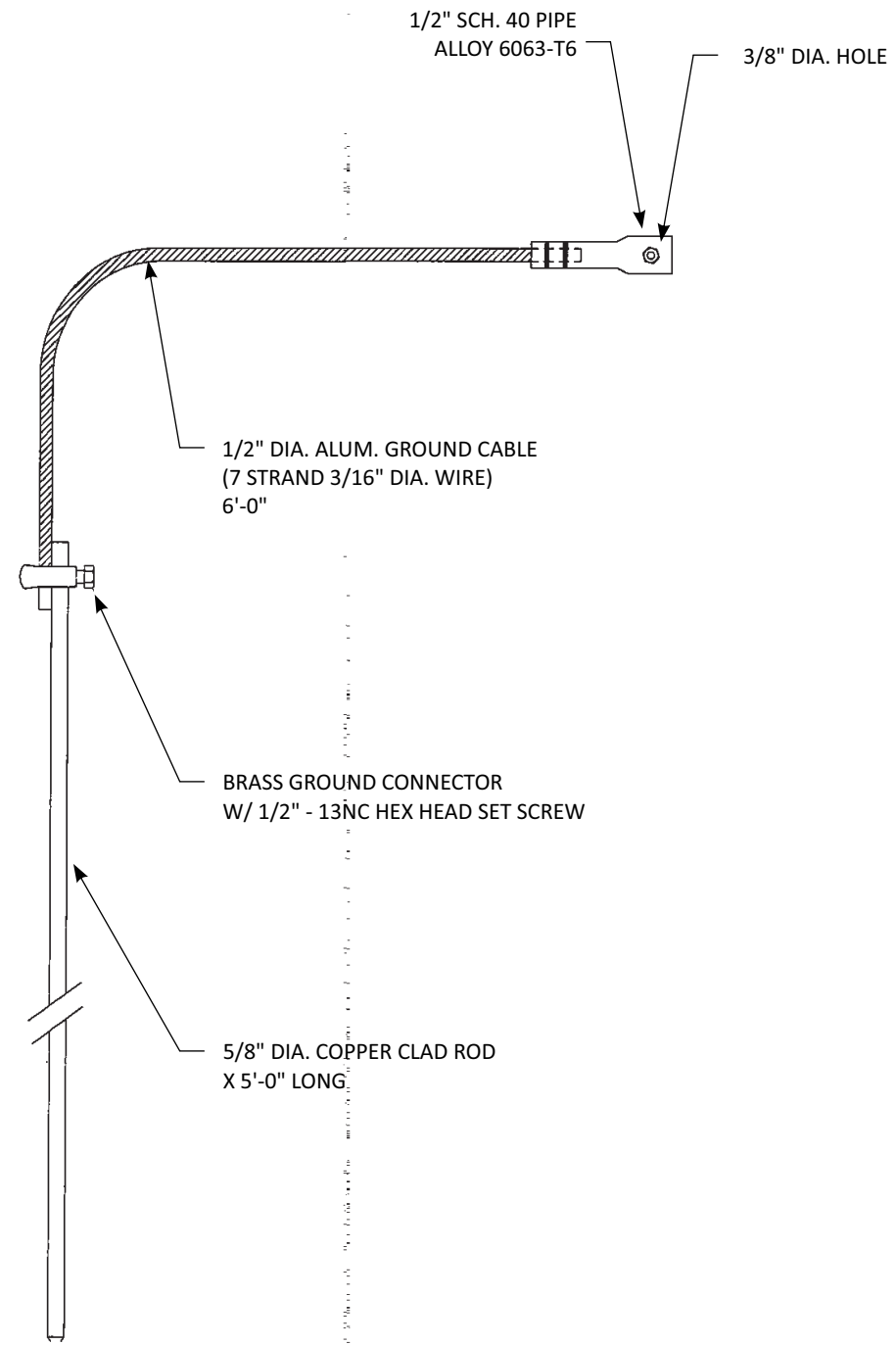
This drawing is the property of Chandler Signs, LLC. All rights to its use for reproduction are reserved by Chandler Signs, LLC.

**FINAL ELECTRICAL CONNECTION BY CUSTOMER**

THIS SIGN IS INTENDED TO BE INSTALLED IN ACCORDANCE WITH ARTICLE 600 OF THE NATIONAL ELECTRICAL CODE AND/OR OTHER APPLICABLE LOCAL CODES. THIS INCLUDES PROPER GROUNDING & BONDING OF THE SIGN. SIGN WILL BEAR UL LABEL(S).



**F**



**FLAG LIGHTENING KIT**

N.T.S.

ONE ( 1 ) REQUIRED - PROVIDE AND INSTALL

<b>Design #</b>	0634473AR6
<b>Sheet</b>	14 of 24
<b>Client</b>	#5405
<b>Address</b>	2701 W Morgan Ave. Milwaukee, WI 53221-1133
<b>Account Rep.</b>	KRISTEN HAMILTON BRIAN HEAD
<b>Designer</b>	LEAH LANSFORD
<b>Date</b>	1/3/23

Approval / Date	
Client	
Sales	
Estimating	
Art	
Engineering	
Landlord	

Revision/Date
R1(03/06/2023)AM: UPDATED SITE PLAN
R2(04/11/2023)AM: UPDATED SITE PLAN AND UPDATED SIGN ID WITH NEW 27" TALL MONUMENT WITH ICON AND READERBOARD. ALSO, UPDATED CREDIT CARD STRIP ON DOOR VINYL
R3(5/23/23)LL: UPDATED TO TWO OPTIONS FOR SIGN A, CHANGED A AND B TO BE ROST
R4(5/10/23)LL: ADDED SPEC CALLOUTS FOR ROST. DELETED OPTION 1 FOR SIGN A AND CHANGED DIMS FOR OPTION 2. ADDED NIGHT VIEW FOR MONUMENT AND WALL SIGN
R5(05/24/2023)AM: CHANGES REQUESTED
SIGN A NEEDS TO INVERT THE COLORS OF THE READER BOARD
REMOVE THE CALL OUT ON THE SITE PLAN FOR THE 'EXISTING MONUMENT SIGN'
SIGN B - PLEASE SPELL OUT THE ROUTE OUT SHOW THROUGH DESCRIPTION AND ADD CALLOUTS FOR ILLUMINATED ACRYLIC AND PAINTED ALUMINUM PARTS OF THE SIGN ON THE RENDERING



<b>National Headquarters</b>	14201 Sovereign Road #101 Fort Worth, TX 76155 (214)992-2000 Fax (214)992-2044
<b>San Antonio</b>	17319 San Pedro Ave Ste 200 San Antonio, TX 78232 (210)349-3804 Fax (210)349-8724
<b>Northeast US</b>	2301 River Road Ste 201 Louisville, KY 40206 (502) 897-9800 Cell (502) 554-2575
<b>Georgia</b>	111 Woodstone Place Dawsonville, GA 30534 (678) 725-8852 Fax (210) 349-8724
<b>South Texas</b>	PO BOX 125 206 Doral Drive Portland, TX 78374 (361) 563-5599 Fax (361) 643-6533

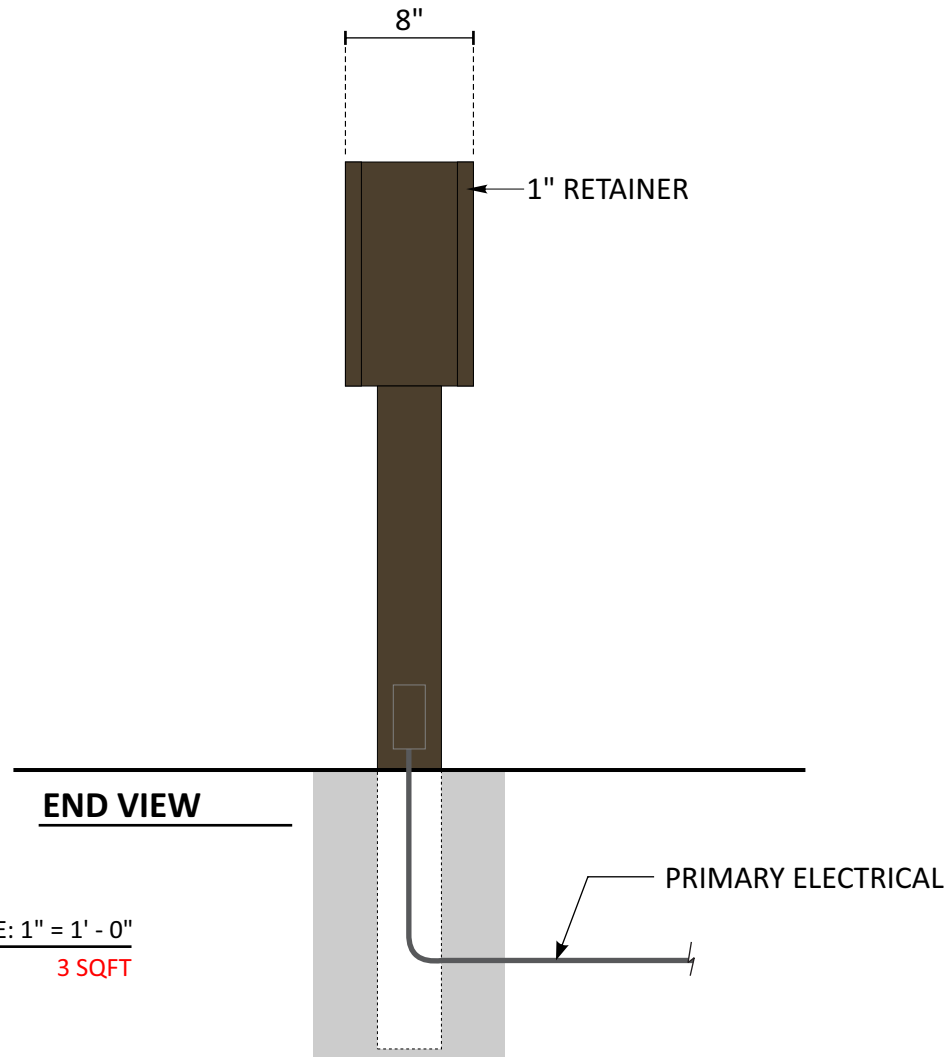
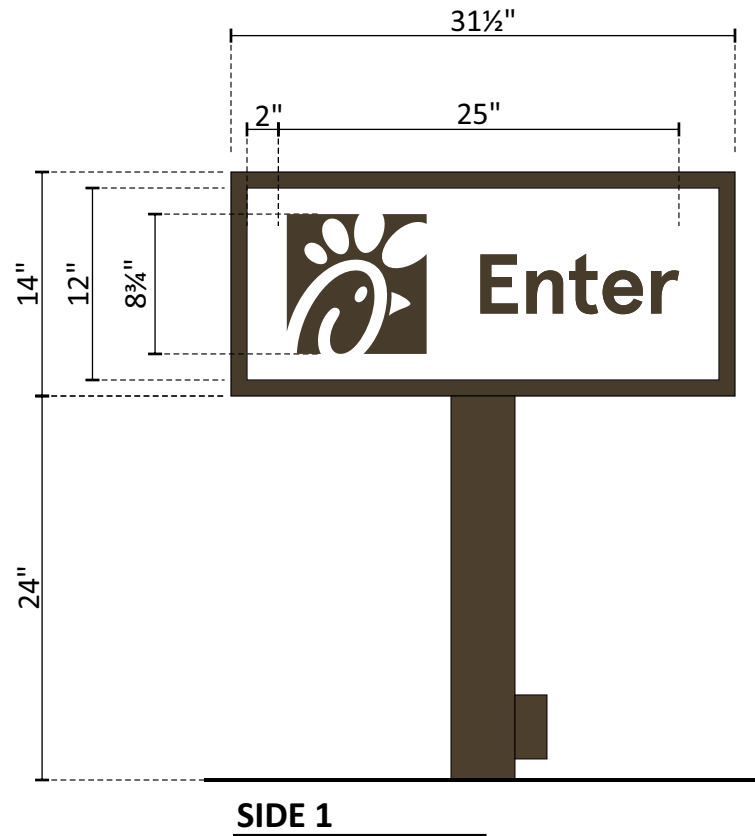
This drawing is the property of Chandler Signs, LLC. All rights to its use for reproduction are reserved by Chandler Signs, LLC.

**FINAL ELECTRICAL CONNECTION BY CUSTOMER**

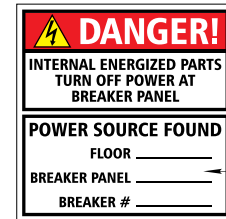
THIS SIGN IS INTENDED TO BE INSTALLED IN ACCORDANCE WITH ARTICLE 680 OF THE NATIONAL ELECTRICAL CODE AND/OR OTHER APPLICABLE LOCAL CODES. THIS INCLUDES PROPER GROUNDING & BONDING OF THE SIGN. SIGN WILL BEAR UL LABEL(S).



**F**



2014/2017 NEC  
COMPLIANT LABEL



WARNING LABEL/  
BREAKER LOCATION

**G CFA - D/F DIRECTIONAL**  
ONE [1] REQUIRED - MANUFACTURE & INSTALL

SCALE: 1" = 1' - 0"  
3 SQFT

**GENERAL SPECIFICATIONS**

D/F ALUMINUM SIGN CABINET INTERNALLY ILLUMINATED WITH 6500K WHITE LEDS.

FILLER, RETAINER AND SUPPORT PAINTED PAINTED MATTHEWS #20181 DK BRONZE, SATIN.

**ACRYLIC FACES**

#7328 WHITE ACRYLIC DECORATED WITH #3630-069 DURONODIC TRANSLUCENT VINYL APPLIED 1ST SURFACE.

TEXT TO BE APERCU SENTENCE CASE BOLD

**STEEL POLE**

4" x 4" STEEL SQUARE TUBE SUPPORT

Design #

0634473AR6

Sheet 15 of 24

Client

#5405

Address

2701 W Morgan Ave.  
Milwaukee, WI 53221-1133

Account Rep. KRISTEN HAMILTON  
BRIAN HEAD

Designer LEAH LANSFORD

Date 1/3/23

Approval / Date

Client	
Sales	
Estimating	
Art	
Engineering	
Landlord	

Revision/Date

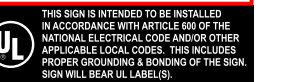
R1(03/06/2023)AM: UPDATED SITE PLAN
R2(04/11/2023)AM: UPDATED SITE PLAN AND UPDATED SIGN ID A WITH NEW 27" TALL MONUMENT WITH ICON AND READERBOARD. ALSO, UPDATED CREDIT CARD STRIP ON DOOR VINYL
R3(5/23/23)LL: UPDATED TO TWO OPTIONS FOR SIGN A, CHANGED A AND B TO BE ROST
R4(5/10/23)LL: ADDED SPEC CALLOUTS FOR ROST, DELETED OPTION 1 FOR SIGN A AND CHANGED DIMS FOR OPTION 2. ADDED NIGHT VIEW FOR MONUMENT AND WALL SIGN
R5(05/24/2023)AM: CHANGES REQUESTED
SIGN A NEEDS TO INVERT THE COLORS OF THE READER BOARD
REMOVE THE CALL OUT ON THE SITE PLAN FOR THE 'EXISTING MONUMENT SIGN'
SIGN B - PLEASE SPELL OUT THE ROUTE OUT SHOW THROUGH DESCRIPTION AND ADD CALL OUTS FOR ILLUMINATED ACRYLIC AND PAINTED ALUMINUM PARTS OF THE SIGN ON THE RENDERING



National Headquarters	14201 Sovereign Road #101 Fort Worth, TX 76155 (214)902-2000 Fax (214)902-2044
San Antonio	17319 San Pedro Ave Ste 200 San Antonio, TX 78232 (210)349-3804 Fax (210)349-8724
Northeast US	2301 River Road Ste 201 Louisville, KY 40206 (502) 837-9800 Cell (502) 554-2575
Georgia	111 Woodstone Place Dawsonville, GA 30534 (678) 725-8852 Fax (210) 349-8724
South Texas	PO BOX 125 206 Doral Drive Portland, TX 78374 (361) 563-5599 Fax (361) 643-6533

This drawing is the property of Chandler Signs, LLC. All rights to its use for reproduction are reserved by Chandler Signs, LLC.

**FINAL ELECTRICAL CONNECTION BY CUSTOMER**





National Headquarters 14201 Sovereign Road #101  
Fort Worth, TX 76155  
(214)992-2000 Fax (214)992-2044

San Antonio 17319 San Pedro Ave  
Ste 200  
San Antonio, TX 78232  
(210)349-3804 Fax (210)349-8724

Northeast US 2301 River Road Ste 201  
Louisville, KY 40206  
(502) 897-9800 Cell (502) 554-2575

Georgia 111 Woodstone Place  
Dawsonville, GA 30534  
(678) 725-8852 Fax (210) 349-8724

South Texas PO BOX 125 206 Doral Drive  
Portland, TX 78374  
(361) 563-5599 Fax (361) 643-6533

This drawing is the property of  
Chandler Signs, LLC  
All rights to its use for reproduction  
are reserved by Chandler Signs, LLC

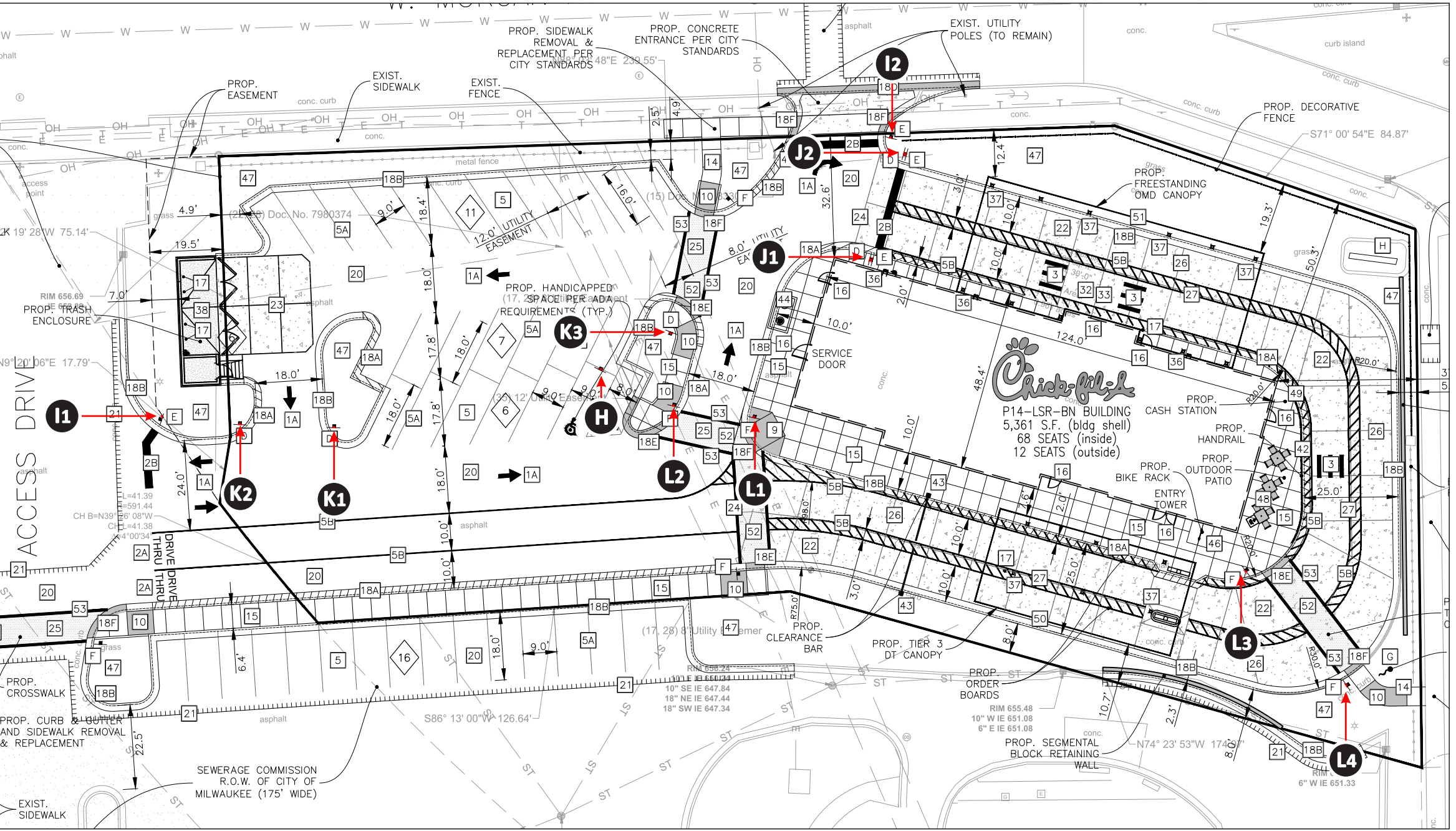
**FINAL ELECTRICAL  
CONNECTION BY  
CUSTOMER**

THIS SIGN IS INTENDED TO BE INSTALLED  
IN ACCORDANCE WITH ARTICLE 600 OF THE  
NATIONAL ELECTRICAL CODE AND/OR OTHER  
APPLICABLE LOCAL CODES. THIS INCLUDES  
PROPER GROUNDING & BONDING OF THE SIGN.  
SIGN WILL BEAR UL LABEL(S).



**SITE PLAN 2**

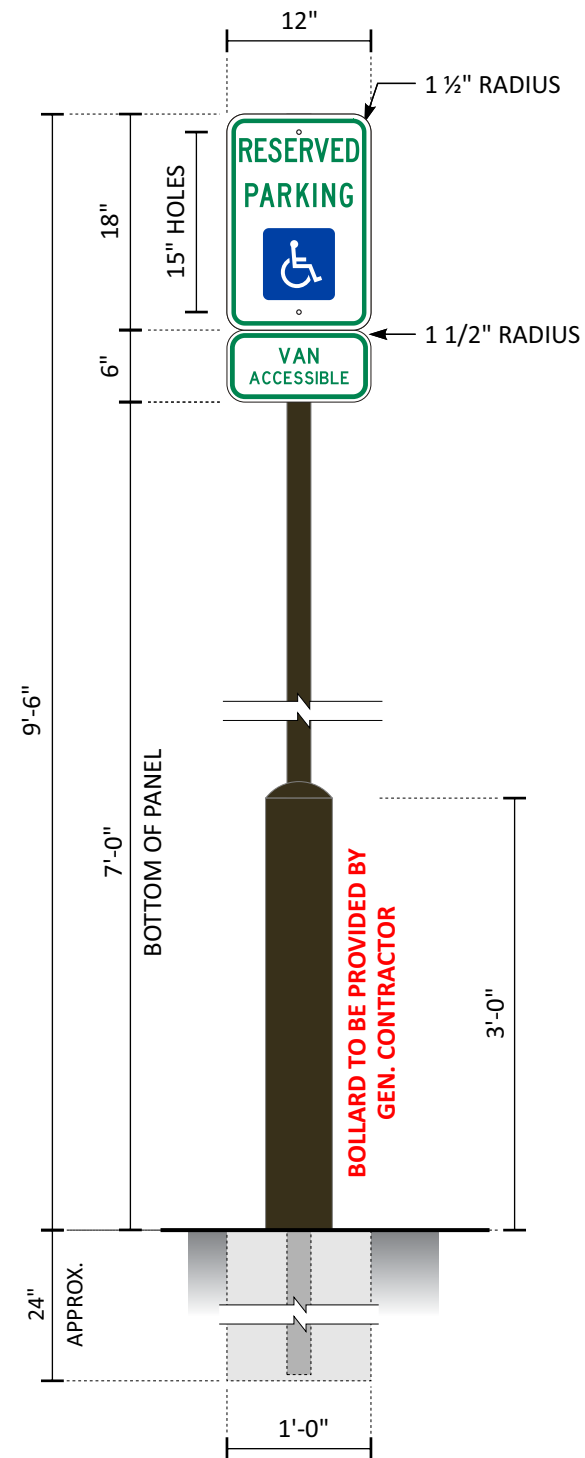
SIGN I-D LETTER	FACE A	FACE B
H	 WITH BOLLARD	 WITH BOLLARD
I1		N/A
I2	 	N/A
J1 J2		
K1 K2		N/A
K3	 	N/A
L1-4		N/A



**SITE PLAN 2**

SCALE: 1/32" = 1'-0"





## BOLLARD MOUNTED HANDICAP SIGNS

### SPECIFICATIONS

#### SIGN PANELS

.080 ALUMINUM WITH BACKS PAINTED MATTHEWS #20181 DARK BRONZE, SATIN AND REFLECTIVE VINYL GRAPHICS APPLIED 1ST SURFACE.

SIGN PANELS ARE TO BE SECURED BACK TO BACK ON SIGN POST WITH NUTS AND BOLTS PAINTED TO MATCH VINYL BACKGROUND

#### SIGN POST

2" x 2" ALUMINUM SQ. TUBE, CAPPED ON TOP WITH PUSH IN PLASTIC CAP PAINTED MATTHEWS #20181 DARK BRONZE, SATIN. CAP IS A BUYOUT FROM MCMASTER CARR #9565K31 INVENTORY #02948

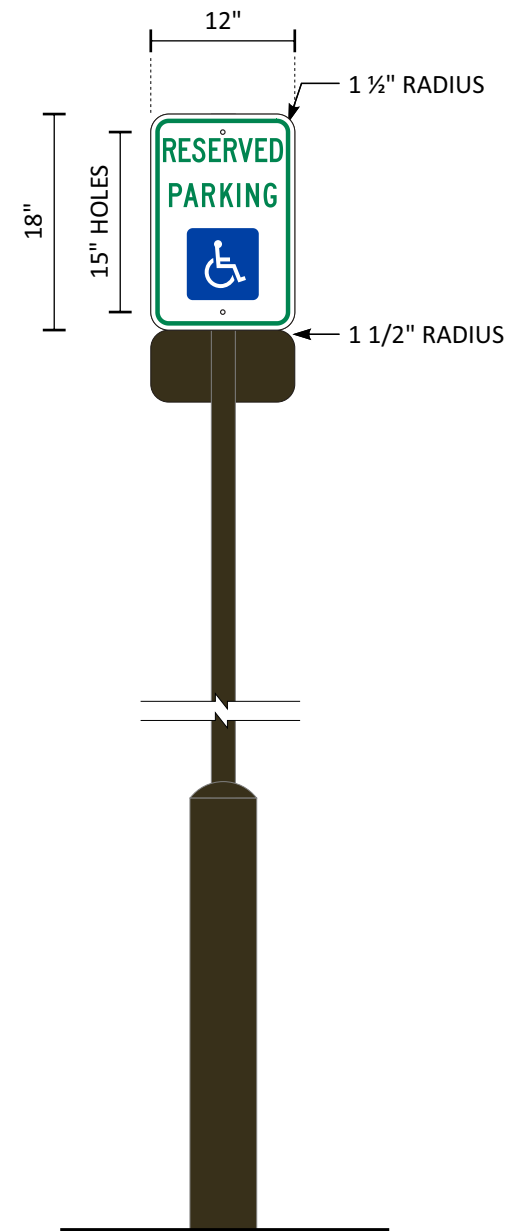
#### BOLLARD - TO BE PROVIDED BY GEN.CONTRACTOR

5 9/16" O.D. x .280 WALL THICKNESS STEEL PIPE.

BOLLARD AND CONCRETE TOP TO BE PAINTED MATTHEWS #74155 DARK BRONZE, SEMI-GLOSS. INSTALLER TO PROVIDE PAINT.

**DAL - MANUFACTURING**

**MUTCD PANEL - UPPERCASE**



**H CFA - D/F HCVA POST AND PANEL**

SCALE: 3/4" = 1'-0"

ONE ( 1 ) REQUIRED - MANUFACTURE AND INSTALL

2 SQ. FT.

VIS22 - NEW COLOR SPECIFICATION

<b>Design #</b>	
0634473AR6	
<b>Sheet</b>	17 of 24
<b>Client</b>	
#5405	
<b>Address</b>	
2701 W Morgan Ave. Milwaukee, WI 53221-1133	
<b>Account Rep.</b>	KRISTEN HAMILTON BRIAN HEAD
<b>Designer</b>	LEAH LANSFORD
<b>Date</b>	1/3/23
<b>Approval / Date</b>	
<b>Client</b>	
<b>Sales</b>	
<b>Estimating</b>	
<b>Art</b>	
<b>Engineering</b>	
<b>Landlord</b>	

Revision/Date
R1(03/06/2023)AM: UPDATED SITE PLAN
R2(04/11/2023)AM: UPDATED SITE PLAN AND UPDATED SIGN ID A WITH NEW 27" TALL MONUMENT WITH ICON AND READERBOARD. ALSO, UPDATED CREDIT CARD STRIP ON DOOR VINYL
R3(5/23/23)LL: UPDATED TO TWO OPTIONS FOR SIGN A, CHANGED A AND B TO BE ROST
R4(5/10/23)LL: ADDED SPEC CALLOUTS FOR ROST. DELETED OPTION 1 FOR SIGN A AND CHANGED DIMS FOR OPTION 2. ADDED NIGHT VIEW FOR MONUMENT AND WALL SIGN
R5(05/24/2023)AM: CHANGES REQUESTED

SIGN A NEEDS TO INVERT THE COLORS OF THE READER BOARD  
REMOVE THE CALL OUT ON THE SITE PLAN FOR THE 'EXISTING MONUMENT SIGN'  
SIGN B - PLEASE SPELL OUT THE ROUTE OUT SHOW THROUGH DESCRIPTION AND ADD CALL OUTS FOR ILLUMINATED ACRYLIC AND PAINTED ALUMINUM PARTS OF THE SIGN ON THE RENDERING



<b>National Headquarters</b>	14201 Sovereign Road #101 Fort Worth, TX 76155 (214)992-2000 Fax (214)992-2044
<b>San Antonio</b>	17319 San Pedro Ave Ste 200 San Antonio, TX 78232 (210)349-3804 Fax (210)349-8724
<b>Northeast US</b>	2301 River Road Ste 201 Louisville, KY 40206 (502) 897-9800 Cell (502) 554-2575
<b>Georgia</b>	111 Woodstone Place Dawsonville, GA 30534 (678) 725-8852 Fax (210) 349-8724
<b>South Texas</b>	PO BOX 125 206 Doral Drive Portland, TX 78374 (361) 563-5599 Fax (361) 643-6533

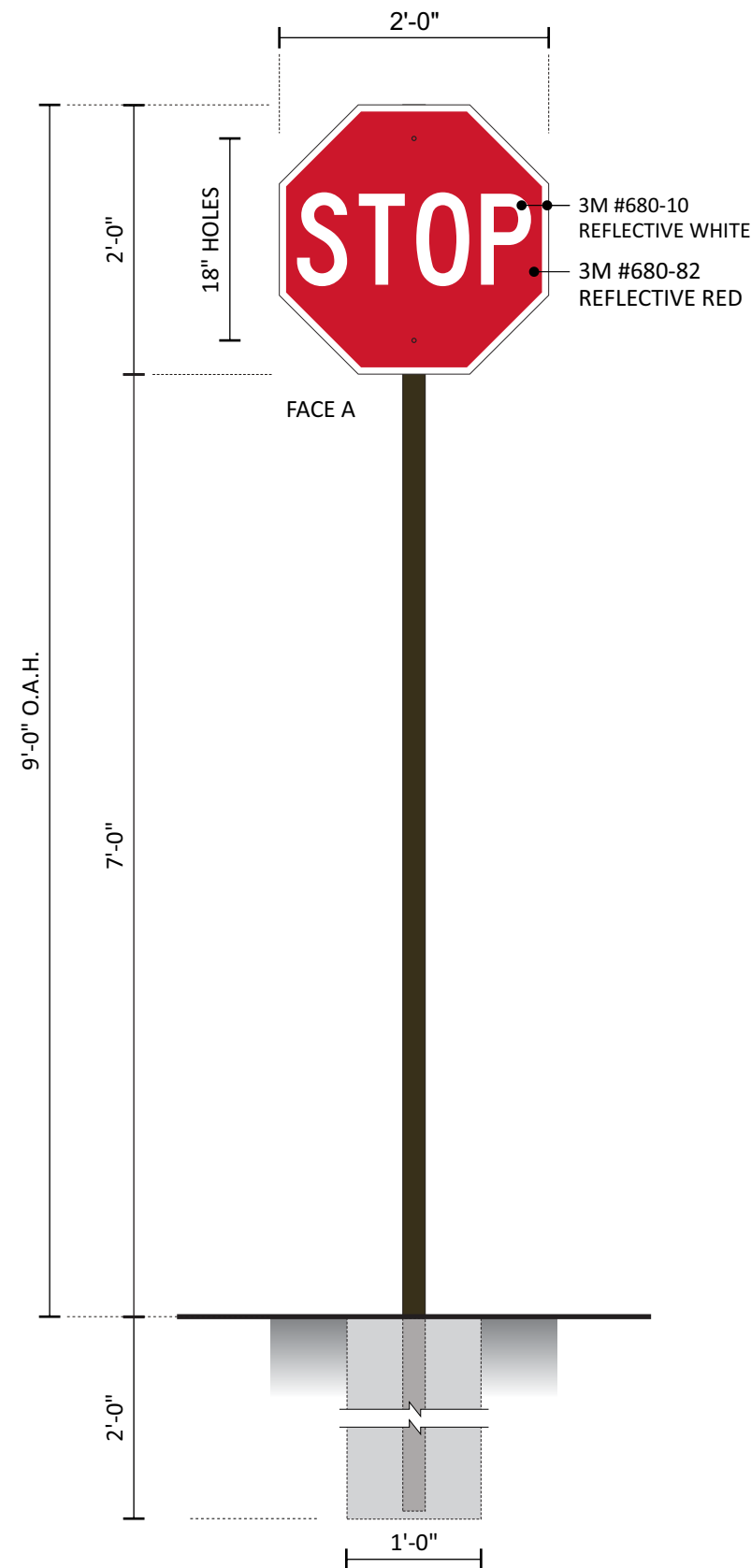
This drawing is the property of Chandler Signs, LLC. All rights to its use for reproduction are reserved by Chandler Signs, LLC.

**FINAL ELECTRICAL CONNECTION BY CUSTOMER**

THIS SIGN IS INTENDED TO BE INSTALLED IN ACCORDANCE WITH ARTICLE 600 OF THE NATIONAL ELECTRICAL CODE AND/OR OTHER APPLICABLE LOCAL CODES. THIS INCLUDES PROPER GROUNDING & BONDING OF THE SIGN. SIGN WILL BEAR UL LABEL(S).



G1-3, H1-2



**SPECIFICATIONS**

**SIGN PANELS**

.080 ALUMINUM PANELS WITH BACKS PAINTED MATTHEWS #20181 DK. BRONZE, SATIN AND REFLECTIVE VINYL GRAPHICS APPLIED 1ST SURFACE.

**SIGN PANEL IS TO BE SECURED TO SIGN POST WITH NUTS AND BOLTS PAINTED TO MATCH VINYL BACKGROUND**

**SIGN POST**

2" x 2" ALUMINUM SQ. TUBE, CAPPED ON TOP WITH PUSH IN PLASTIC CAP PAINTED MATTHEWS #20181 DARK BRONZE, SATIN.  
CAP IS A BUYOUT FROM MCMASTER CARR #9565K31 INVENTORY #02948

**NOTE:**

IF SIGN IS LOCATED ON SIDEWALK, THEN IT IS THE RESPONSIBILITY OF THE GENERAL CONTRACTOR TO INSTALL A PVC SLEEVE INTO THE CONCRETE WHEN THE SIDEWALK IS POURED PRIOR TO INSTALLATION OF THE SIGN.

**DAL - MANUFACTURING**  
**MUTCD PANEL - UPPERCASE**

**11** CFA - DOT S/F STOP SIGN  
ONE ( 1 ) REQUIRED - MANUFACTURE & INSTALL

SCALE: 3/4" = 1'-0"

5 SQ. FT.

**DFW MANUFACTURING / NEW VIS 2022 MUTCD PANEL**

<b>Design #</b>	
0634473AR6	
<b>Sheet</b>	18 of 24
<b>Client</b>	
#5405	
<b>Address</b>	
2701 W Morgan Ave. Milwaukee, WI 53221-1133	
<b>Account Rep.</b>	KRISTEN HAMILTON BRIAN HEAD
<b>Designer</b>	LEAH LANSFORD
<b>Date</b>	1/3/23

Approval / Date	
<b>Client</b>	
<b>Sales</b>	
<b>Estimating</b>	
<b>Art</b>	
<b>Engineering</b>	
<b>Landlord</b>	

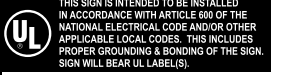
Revision/Date	
R1(03/06/2023)AM	UPDATED SITE PLAN
R2(04/11/2023)AM	UPDATED SITE PLAN AND UPDATED SIGN ID A WITH NEW 27" TALL MONUMENT WITH ICON AND READERBOARD. ALSO, UPDATED CREDIT CARD STRIP ON DOOR VINYL
R3(5/23/23)LL	UPDATED TO TWO OPTIONS FOR SIGN A, CHANGED A AND B TO BE ROST
R4(5/10/23)LL	ADDED SPEC CALLOUTS FOR ROST. DELETED OPTION 1 FOR SIGN A AND CHANGED DIMS FOR OPTION 2. ADDED NIGHT VIEW FOR MONUMENT AND WALL SIGN
R5(05/24/2023)AM	CHANGES REQUESTED
SIGN A NEEDS TO INVERT THE COLORS OF THE READER BOARD REMOVE THE CALL OUT ON THE SITE PLAN FOR THE 'EXISTING MONUMENT SIGN' SIGN B - PLEASE SPELL OUT THE ROUTE OUT SHOW THROUGH DESCRIPTION AND ADD CALL OUTS FOR ILLUMINATED ACRYLIC AND PAINTED ALUMINUM PARTS OF THE SIGN ON THE RENDERING	

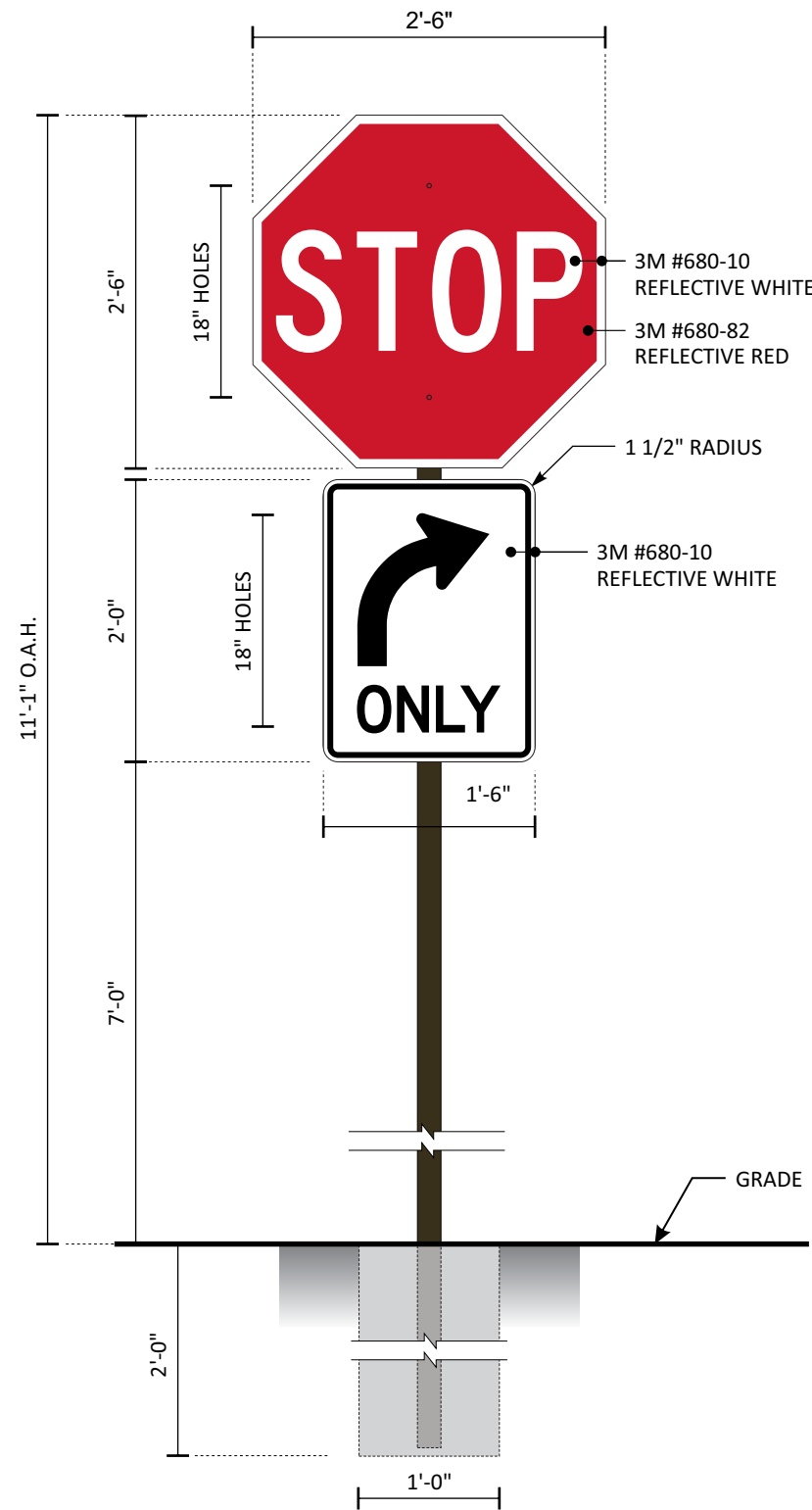


<b>National Headquarters</b>	14201 Sovereign Road #101 Fort Worth, TX 76155 (214)992-2000 Fax (214)992-2044
<b>San Antonio</b>	17319 San Pedro Ave Ste 200 San Antonio, TX 78232 (210)349-3804 Fax (210)349-8724
<b>Northeast US</b>	2301 River Road Ste 201 Louisville, KY 40206 (502) 897-9800 Cell (502) 554-2575
<b>Georgia</b>	111 Woodstone Place Dawsonville, GA 30534 (678) 725-8852 Fax (210) 349-8724
<b>South Texas</b>	PO BOX 125 206 Doral Drive Portland, TX 78374 (361) 563-5599 Fax (361) 643-6533

This drawing is the property of Chandler Signs, LLC. All rights to its use for reproduction are reserved by Chandler Signs, LLC.

**FINAL ELECTRICAL CONNECTION BY CUSTOMER**





**SPECIFICATIONS**

**SIGN PANELS**

.080 ALUMINUM PANELS WITH BACKS PAINTED MATTHEWS #20181 DK. BRONZE, SATIN AND REFLECTIVE VINYL GRAPHICS APPLIED 1ST SURFACE.

SIGN PANEL IS TO BE SECURED TO SIGN POST WITH NUTS AND BOLTS PAINTED TO MATCH VINYL BACKGROUND

**SIGN POST**

2" x 2" ALUMINUM SQ. TUBE, CAPPED ON TOP WITH PUSH IN PLASTIC CAP PAINTED MATTHEWS #20181 DARK BRONZE, SATIN. CAP IS A BUYOUT FROM MCMASTER CARR #9565K31 INVENTORY #02948

**DAL - MANUFACTURING**  
**MUTCD PANEL - UPPERCASE**

**12 CFA - DOT S/F STOP SIGN WITH RTO POST AND PANEL**

SCALE: 3/4" = 1'-0"

ONE ( 1 ) REQUIRED - MANUFACTURE & INSTALL

5 SQ. FT.

DFW MANUFACTURING / VIS22 - NEW COLOR SPECIFICATION

<b>Design #</b>	0634473AR6
<b>Sheet</b>	19 of 24
<b>Client</b>	#5405
<b>Address</b>	2701 W Morgan Ave. Milwaukee, WI 53221-1133
<b>Account Rep.</b>	KRISTEN HAMILTON BRIAN HEAD
<b>Designer</b>	LEAH LANSFORD
<b>Date</b>	1/3/23

Approval / Date	
Client	
Sales	
Estimating	
Art	
Engineering	
Landlord	

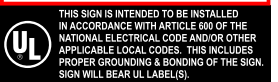
Revision/Date	
R1(03/06/2023)AM: UPDATED SITE PLAN	
R2(04/11/2023)AM: UPDATED SITE PLAN AND UPDATED SIGN ID A WITH NEW 27" TALL MONUMENT WITH ICON AND READERBOARD. ALSO, UPDATED CREDIT CARD STRIP ON DOOR VINYL	
R3(5/23/23)LL: UPDATED TO TWO OPTIONS FOR SIGN A, CHANGED A AND B TO BE ROST	
R4(5/10/23)LL: ADDED SPEC CALLOUTS FOR ROST, DELETED OPTION 1 FOR SIGN A AND CHANGED DIMS FOR OPTION 2. ADDED NIGHT VIEW FOR MONUMENT AND WALL SIGN	
R5(05/24/2023)AM: CHANGES REQUESTED	
SIGN A NEEDS TO INVERT THE COLORS OF THE READER BOARD	
REMOVE THE CALL OUT ON THE SITE PLAN FOR THE 'EXISTING MONUMENT SIGN'	
SIGN B - PLEASE SPELL OUT THE ROUTE OUT SHOW THROUGH DESCRIPTION AND ADD CALL OUTS FOR ILLUMINATED ACRYLIC AND PAINTED ALUMINUM PARTS OF THE SIGN ON THE RENDERING	



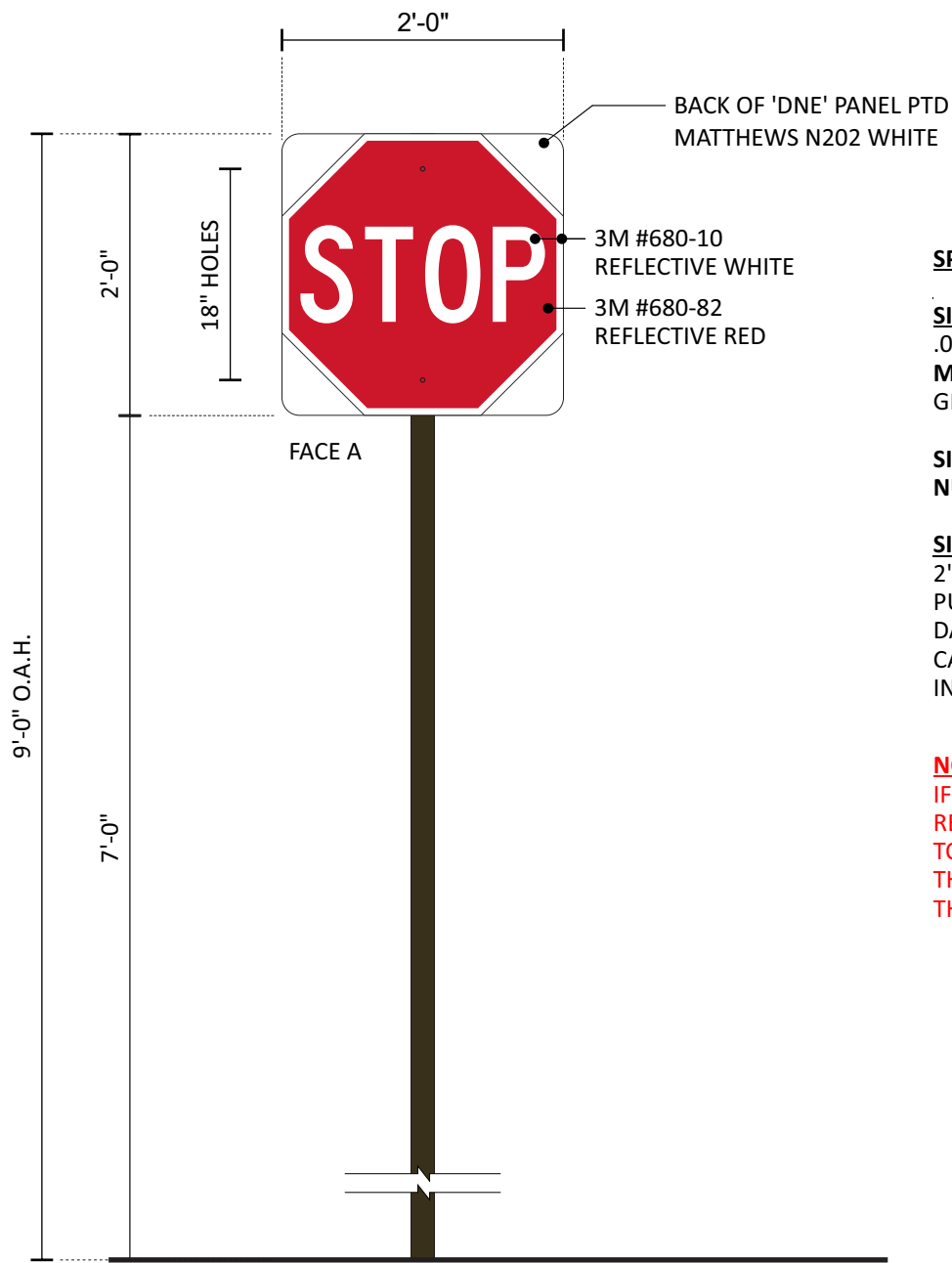
<b>National Headquarters</b>	14201 Sovereign Road #101 Fort Worth, TX 76155 (214)992-2000 Fax(214)992-2044
<b>San Antonio</b>	17319 San Pedro Ave Ste 200 San Antonio, TX 78232 (210)349-3804 Fax (210)349-8724
<b>Northeast US</b>	2301 River Road Ste 201 Louisville, KY 40206 (502) 897-9800 Cell (502) 554-2575
<b>Georgia</b>	111 Woodstone Place Dawsonville, GA 30534 (678) 725-8852 Fax (210) 349-8724
<b>South Texas</b>	PO BOX 125 206 Doral Drive Portland, TX 78374 (361) 563-5599 Fax (361) 643-6533

This drawing is the property of Chandler Signs, LLC. All rights to its use for reproduction are reserved by Chandler Signs, LLC.

**FINAL ELECTRICAL CONNECTION BY CUSTOMER**



DFW MANUFACTURING / NEW VIS 2022 MUTCD PANEL



**SPECIFICATIONS**

**SIGN PANELS**

.080 ALUMINUM PANELS WITH BACKS PAINTED MATTHEWS N202 WHITE, SATIN AND REFLECTIVE VINYL GRAPHICS APPLIED 1ST SURFACE.

**SIGN PANEL IS TO BE SECURED TO SIGN POST WITH NUTS AND BOLTS PAINTED TO MATCH VINYL BACKGROUND**

**SIGN POST**

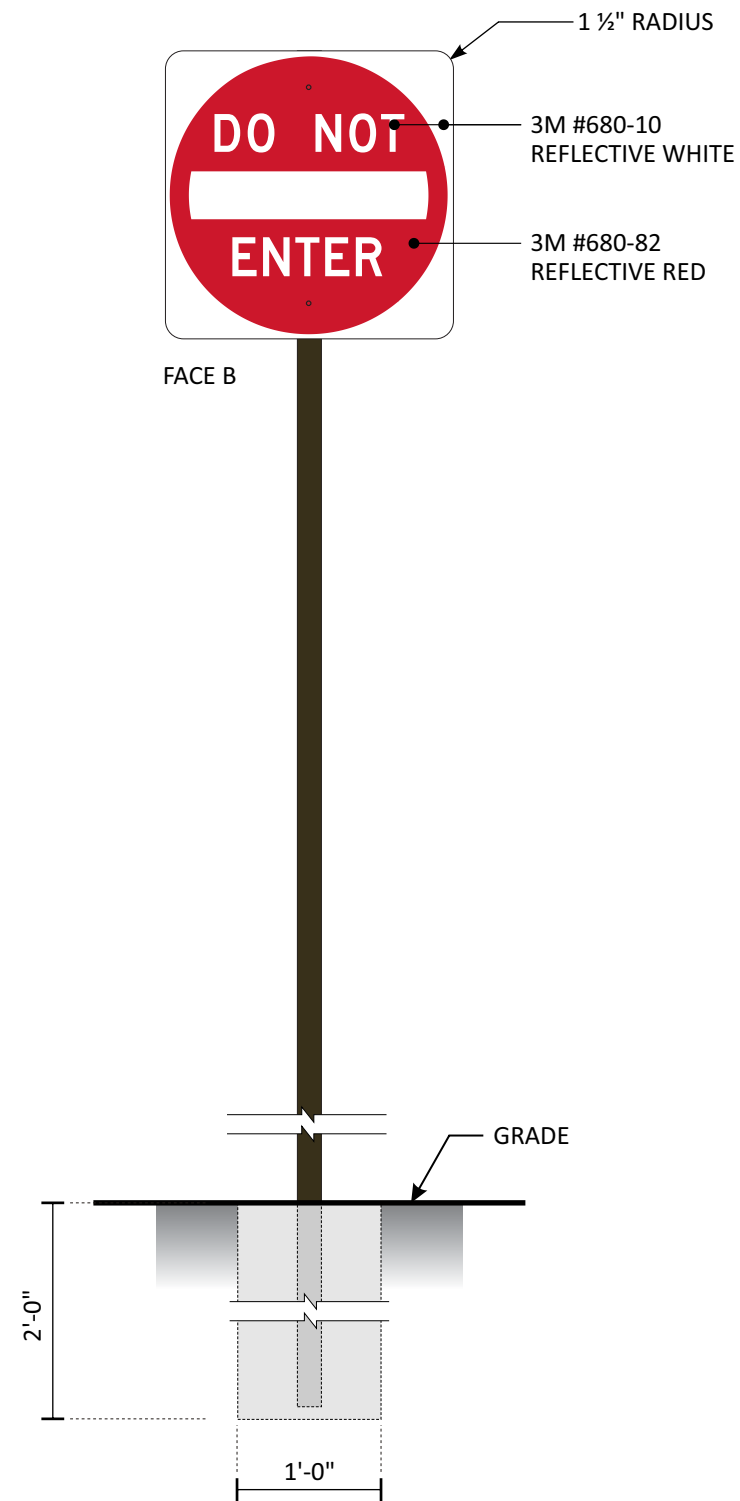
2" x 2" ALUMINUM SQ. TUBE, CAPPED ON TOP WITH PUSH IN PLASTIC CAP PAINTED MATTHEWS #20181 DARK BRONZE, SATIN. CAP IS A BUYOUT FROM MCMASTER CARR #9565K31 INVENTORY #02948

**NOTE:**

IF SIGN IS LOCATED ON SIDEWALK, THEN IT IS THE RESPONSIBILITY OF THE GENERAL CONTRACTOR TO INSTALL A PVC SLEEVE INTO THE CONCRETE WHEN THE SIDEWALK IS POURED PRIOR TO INSTALLATION OF THE SIGN.

**DAL - MANUFACTURING**  
**MUTCD PANEL - UPPERCASE**

**TOP VIEW** SCALE: 3/4" = 1'-0"



**J1 J2**

**CFA - DOT D/F STOP/DNE SIGN**

TWO ( 2 ) REQUIRED - MANUFACTURE AND INSTALL

SCALE: 3/4" = 1'-0"

4 SQ. FT.

<b>Design #</b>	
0634473AR6	
<b>Sheet</b>	20 of 24
<b>Client</b>	
#5405	
<b>Address</b>	
2701 W Morgan Ave. Milwaukee, WI 53221-1133	
<b>Account Rep.</b>	KRISTEN HAMILTON BRIAN HEAD
<b>Designer</b>	LEAH LANSFORD
<b>Date</b>	1/3/23
<b>Approval / Date</b>	
<b>Client</b>	
<b>Sales</b>	
<b>Estimating</b>	
<b>Art</b>	
<b>Engineering</b>	
<b>Landlord</b>	

Revision/Date
R1(03/06/2023)AM: UPDATED SITE PLAN
R2(04/11/2023)AM: UPDATED SITE PLAN AND UPDATED SIGN ID A WITH NEW 20' TALL MONUMENT WITH ICON AND READERBOARD. ALSO, UPDATED CREDIT CARD STRIP ON DOOR VINYL
R3(5/23/23)LL: UPDATED TO TWO OPTIONS FOR SIGN A, CHANGED A AND B TO BE ROST
R4(5/10/23)LL: ADDED SPEC CALLOUTS FOR ROST. DELETED OPTION 1 FOR SIGN A AND CHANGED DIMS FOR OPTION 2. ADDED NIGHT VIEW FOR MONUMENT AND WALL SIGN
R5(05/24/2023)AM: CHANGES REQUESTED

SIGN A NEEDS TO INVERT THE COLORS OF THE READER BOARD  
REMOVE THE CALL OUT ON THE SITE PLAN FOR THE 'EXISTING MONUMENT SIGN'  
SIGN B - PLEASE SPELL OUT THE ROUTE OUT SHOW THROUGH DESCRIPTION AND ADD CALL OUTS FOR ILLUMINATED ACRYLIC AND PAINTED ALUMINUM PARTS OF THE SIGN ON THE RENDERING



<b>National Headquarters</b>	14201 Sovereign Road #101 Fort Worth, TX 76155 (214)992-2000 Fax (214)992-2044
<b>San Antonio</b>	17319 San Pedro Ave Ste 200 San Antonio, TX 78232 (210)349-3804 Fax (210)349-8724
<b>Northeast US</b>	2301 River Road Ste 201 Louisville, KY 40206 (502) 897-9800 Cell (502) 554-2575
<b>Georgia</b>	111 Woodstone Place Dawsonville, GA 30534 (678) 725-8852 Fax (210) 349-8724
<b>South Texas</b>	PO BOX 125 206 Doral Drive Portland, TX 78374 (361) 563-5599 Fax (361) 643-6533

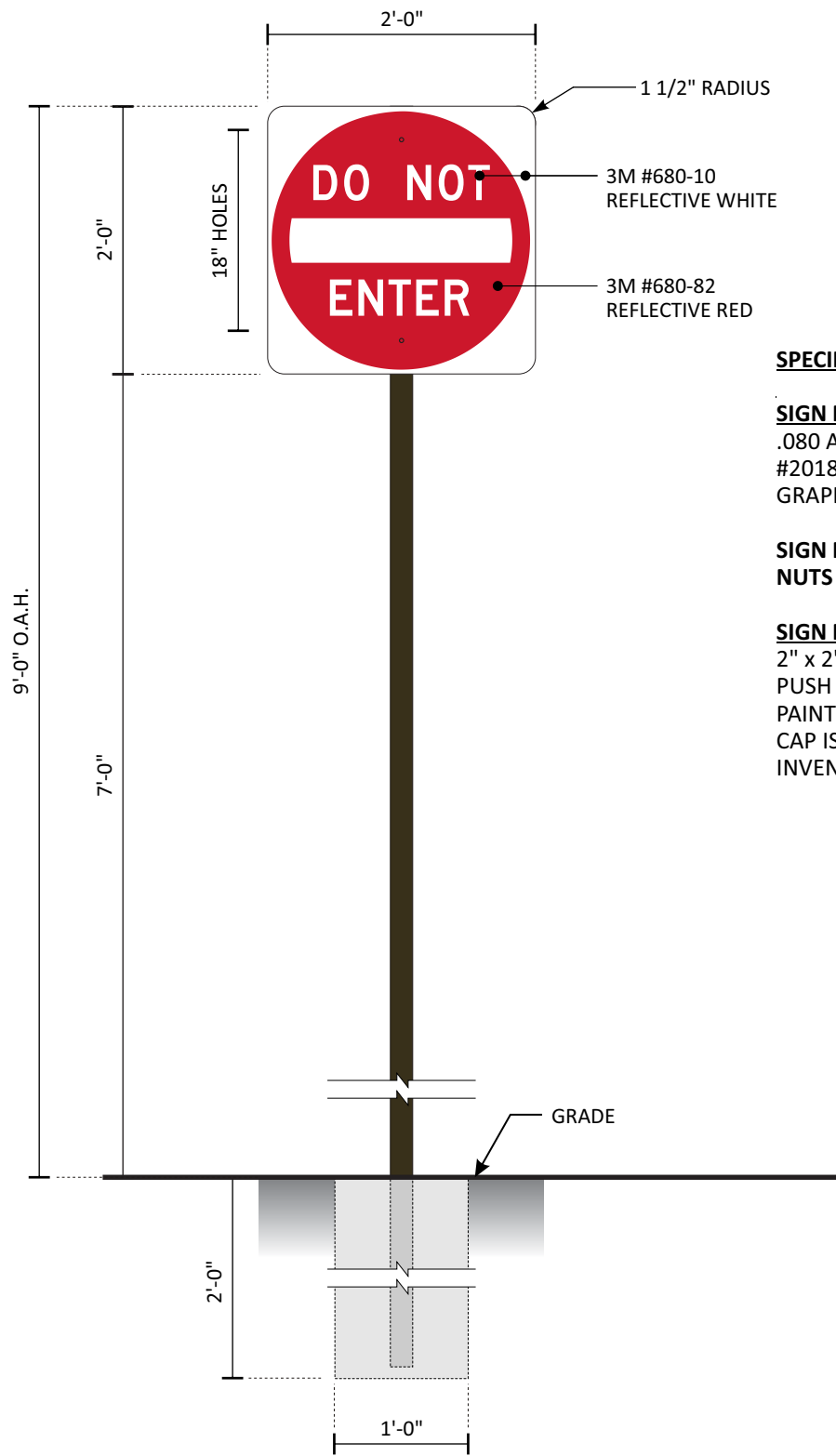
This drawing is the property of Chandler Signs, LLC. All rights to its use for reproduction are reserved by Chandler Signs, LLC.

**FINAL ELECTRICAL CONNECTION BY CUSTOMER**

THIS SIGN IS INTENDED TO BE INSTALLED IN ACCORDANCE WITH ARTICLE 600 OF THE NATIONAL ELECTRICAL CODE AND/OR OTHER APPLICABLE LOCAL CODES. THIS INCLUDES PROPER GROUNDING & BONDING OF THE SIGN. SIGN WILL BEAR UL LABEL(S).



J1-2



**SPECIFICATIONS**

**SIGN PANEL**

.080 ALUMINUM PANELS WITH BACKS PAINTED MATTHEWS #20181 DK. BRONZE, SATIN AND REFLECTIVE VINYL GRAPHICS APPLIED 1ST SURFACE.

**SIGN PANEL IS TO BE SECURED TO SIGN POST WITH NUTS AND BOLTS PAINTED TO MATCH VINYL BACKGROUND**

**SIGN POST**

2" x 2" ALUMINUM SQ. TUBE, CAPPED ON TOP WITH PUSH IN PLASTIC CAP.  
 PAINTED MATTHEWS #20181 DARK BRONZE, SATIN.  
 CAP IS A BUYOUT FROM MCMASTER CARR #9565K31 INVENTORY #02948

**K1 K2**

**CFA - DOT S/F DNE POST AND PANEL**

SCALE: 3/4" = 1'-0"

TWO ( 2 ) REQUIRED - MANUFACTURE AND INSTALL

4 SQ. FT.

**DFW MANUFACTURING / NEW VIS 2022 MUTCD PANEL**

<b>Design #</b>	
0634473AR6	
<b>Sheet</b>	21 of 24
<b>Client</b>	
#5405	
<b>Address</b>	
2701 W Morgan Ave. Milwaukee, WI 53221-1133	
<b>Account Rep.</b>	KRISTEN HAMILTON BRIAN HEAD
<b>Designer</b>	LEAH LANSFORD
<b>Date</b>	1/3/23

Approval / Date	
<b>Client</b>	
<b>Sales</b>	
<b>Estimating</b>	
<b>Art</b>	
<b>Engineering</b>	
<b>Landlord</b>	

Revision/Date	
R1(03/06/2023)AM	UPDATED SITE PLAN
R2(04/11/2023)AM	UPDATED SITE PLAN AND UPDATED SIGN ID A WITH NEW 27' TALL MONUMENT WITH ICON AND READERBOARD. ALSO, UPDATED CREDIT CARD STRIP ON DOOR VINYL
R3(5/23/23)LL	UPDATED TO TWO OPTIONS FOR SIGN A. CHANGED A AND B TO BE ROST
R4(5/10/23)LL	ADDED SPEC CALLOUTS FOR ROST. DELETED OPTION 1 FOR SIGN A AND CHANGED DIMS FOR OPTION 2. ADDED NIGHT VIEW FOR MONUMENT AND WALL SIGN
R5(05/24/2023)AM	CHANGES REQUESTED
SIGN A NEEDS TO INVERT THE COLORS OF THE READER BOARD REMOVE THE CALL OUT ON THE SITE PLAN FOR THE 'EXISTING MONUMENT SIGN' SIGN B - PLEASE SPELL OUT THE ROUTE OUT SHOW THROUGH DESCRIPTION AND ADD CALL OUTS FOR ILLUMINATED ACRYLIC AND PAINTED ALUMINUM PARTS OF THE SIGN ON THE RENDERING	



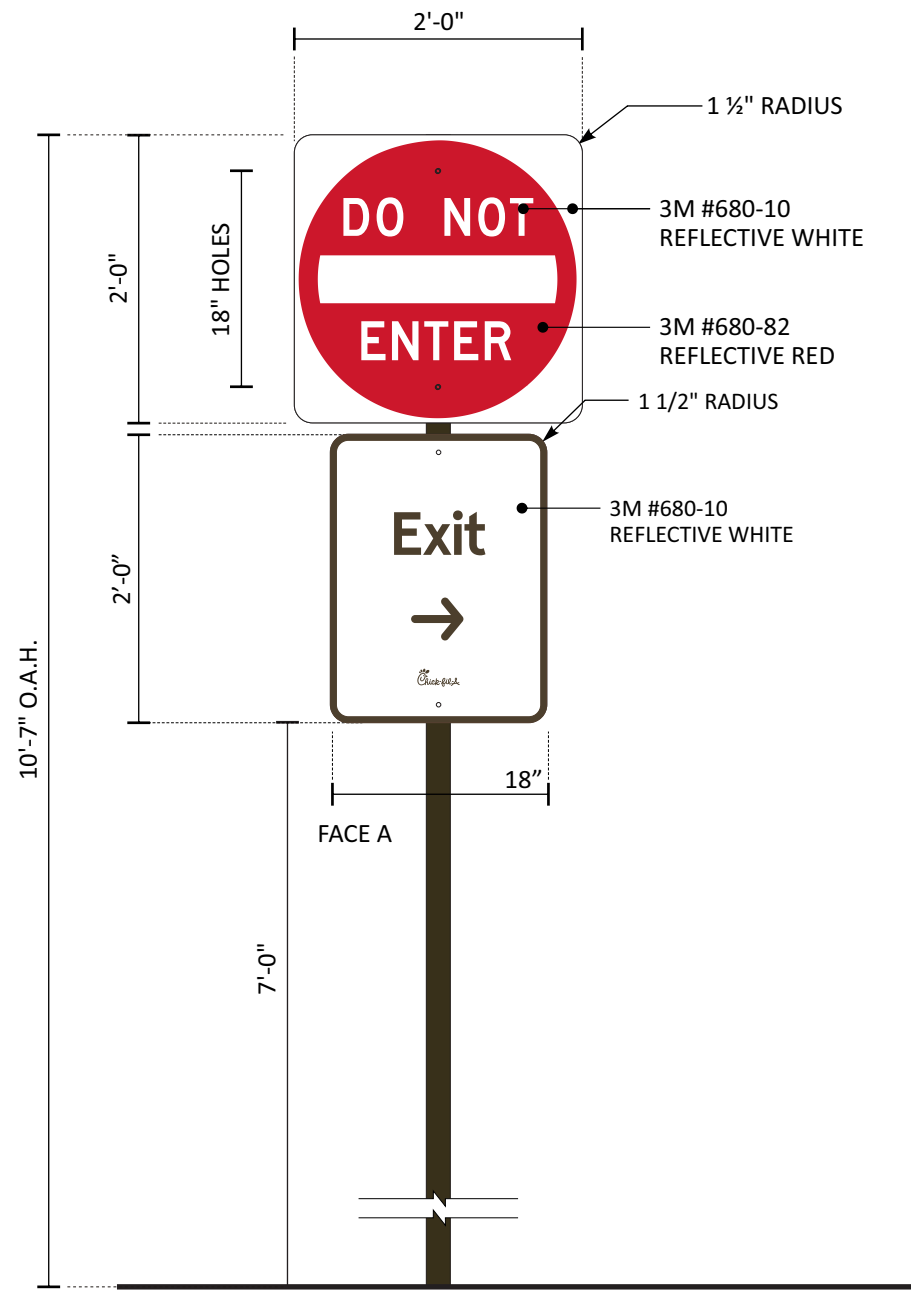
<b>National Headquarters</b>	14201 Sovereign Road #101 Fort Worth, TX 76155 (214)992-2000 Fax (214)992-2044
<b>San Antonio</b>	17319 San Pedro Ave Ste 200 San Antonio, TX 78232 (210)349-3804 Fax (210)349-8724
<b>Northeast US</b>	2301 River Road Ste 201 Louisville, KY 40206 (502) 897-9800 Cell (502) 554-2575
<b>Georgia</b>	111 Woodstone Place Dawsonville, GA 30534 (678) 725-8852 Fax (210) 349-8724
<b>South Texas</b>	PO BOX 125 206 Doral Drive Portland, TX 78374 (361) 563-5599 Fax (361) 643-6533

This drawing is the property of Chandler Signs, LLC. All rights to its use for reproduction are reserved by Chandler Signs, LLC.

**FINAL ELECTRICAL CONNECTION BY CUSTOMER**

THIS SIGN IS INTENDED TO BE INSTALLED IN ACCORDANCE WITH ARTICLE 600 OF THE NATIONAL ELECTRICAL CODE AND/OR OTHER APPLICABLE LOCAL CODES. THIS INCLUDES PROPER GROUNDING & BONDING OF THE SIGN. SIGN WILL BEAR UL LABEL(S).





**SPECIFICATIONS**

**DNE SIGN PANEL**

.080 ALUMINUM PANELS WITH BACKS PAINTED MATTHEWS N202 WHITE, SATIN AND REFLECTIVE VINYL GRAPHICS APPLIED 1ST SURFACE.

**EXIT WITH ARROW SIGN PANEL**

.080 ALUMINUM PANELS WITH BACK SIDES AND FRONT PAINTED MATTHEWS #20181 DK. BRONZE, SATIN AND REFLECTIVE VINYL APPLIED 1ST SURFACE. WEEDED OUT/SHOW THRU GRAPHICS.

**SIGN PANEL IS TO BE SECURED TO SIGN POST WITH NUTS AND BOLTS PAINTED TO MATCH VINYL BACKGROUND**

**SIGN POST**

2" x 2" ALUMINUM SQ. TUBE, CAPPED ON TOP WITH PUSH IN PLASTIC CAP PAINTED MATTHEWS #20181 DARK BRONZE, SATIN.

CAP IS A BUYOUT FROM MCMASTER CARR #9565K31 INVENTORY #02948

**DAL - MANUFACTURING**  
**MUTCD PANEL - UPPERCASE**

**K3 CFA - D/F STOP WITH RTO POST AND PANEL**  
ONE ( 1 ) REQUIRED - MANUFACTURE AND INSTALL

SCALE: 3/4" = 1'-0"  
3 SQ. FT.

**DFW MANUFACTURING / NEW VIS 2022 MUTCD PANEL**

<b>Design #</b>	0634473AR6
<b>Sheet</b>	22 of 24
<b>Client</b>	#5405
<b>Address</b>	2701 W Morgan Ave. Milwaukee, WI 53221-1133
<b>Account Rep.</b>	KRISTEN HAMILTON BRIAN HEAD
<b>Designer</b>	LEAH LANSFORD
<b>Date</b>	1/3/23

Approval / Date	
Client	
Sales	
Estimating	
Art	
Engineering	
Landlord	

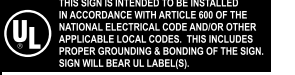
Revision/Date	
R1(03/06/2023)AM: UPDATED SITE PLAN	
R2(04/11/2023)AM: UPDATED SITE PLAN AND UPDATED SIGN ID A WITH NEW 27" TALL MONUMENT WITH ICON AND READERBOARD. ALSO, UPDATED CREDIT CARD STRIP ON DOOR VINYL	
R3(5/23/23)LL: UPDATED TO TWO OPTIONS FOR SIGN A, CHANGED A AND B TO BE ROST	
R4(5/10/23)LL: ADDED SPEC CALLOUTS FOR ROST. DELETED OPTION 1 FOR SIGN A AND CHANGED DIMS FOR OPTION 2. ADDED NIGHT VIEW FOR MONUMENT AND WALL SIGN	
R5(05/24/2023)AM: CHANGES REQUESTED SIGN A NEEDS TO INVERT THE COLORS OF THE READER BOARD REMOVE THE CALL OUT ON THE SITE PLAN FOR THE 'EXISTING MONUMENT SIGN' SIGN B - PLEASE SPELL OUT THE ROUTE OUT SHOW THROUGH DESCRIPTION AND ADD CALLOUTS FOR ILLUMINATED ACRYLIC AND PAINTED ALUMINUM PARTS OF THE SIGN ON THE RENDERING	

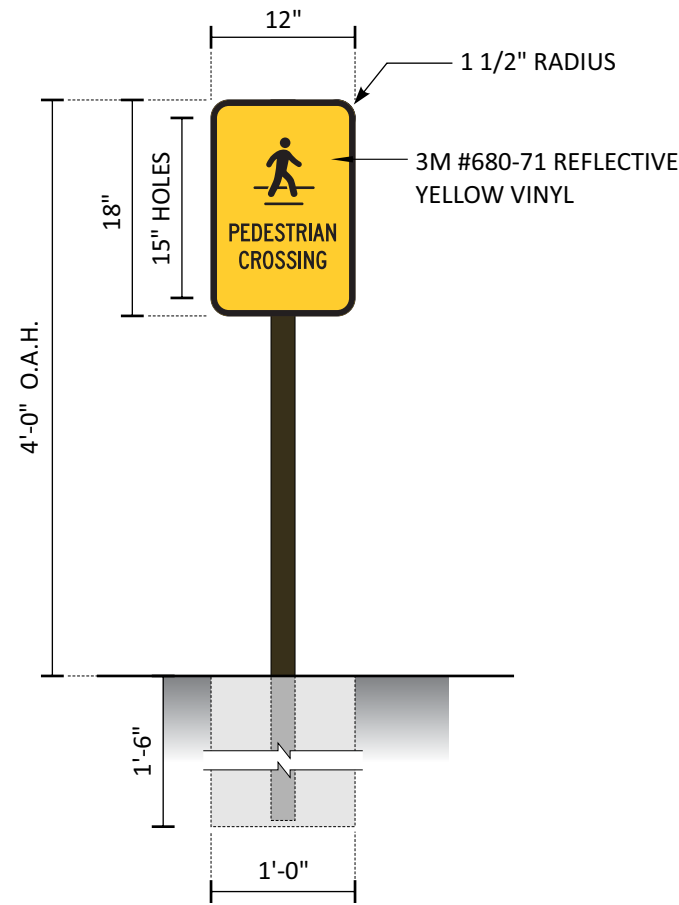


<b>National Headquarters</b>	14201 Sovereign Road #101 Fort Worth, TX 76155 (214)992-2000 Fax (214)992-2044
<b>San Antonio</b>	17319 San Pedro Ave Ste 200 San Antonio, TX 78232 (210)349-3804 Fax (210)349-8724
<b>Northeast US</b>	2301 River Road Ste 201 Louisville, KY 40206 (502) 897-9800 Cell (502) 554-2575
<b>Georgia</b>	111 Woodstone Place Dawsonville, GA 30534 (678) 725-8852 Fax (210) 349-8724
<b>South Texas</b>	PO BOX 125 206 Doral Drive Portland, TX 78374 (361) 563-5599 Fax (361) 643-6533

This drawing is the property of Chandler Signs, LLC. All rights to its use for reproduction are reserved by Chandler Signs, LLC.

**FINAL ELECTRICAL CONNECTION BY CUSTOMER**





**SPECIFICATIONS**

**SIGN PANEL**

.080 ALUMINUM PANELS WITH BACK SIDES AND FRONT PAINTED MATTHEWS #20181 DK. BRONZE, SATIN AND REFLECTIVE VINYL APPLIED 1ST SURFACE. WEDED OUT/SHOW THRU GRAPHICS.

**SIGN POST**

2" x 2" ALUMINUM SQ. TUBE, CAPPED ON TOP WITH PUSH IN PLASTIC CAP PAINTED MATTHEWS #20181 DARK BRONZE, SATIN.

CAP IS A BUYOUT FROM MCMMASTER CARR #9565K31 INVENTORY #02948

**L1-4**

**CFA - S/F PED-X SIGN**

FOUR ( 4 ) REQUIRED - MANUFACTURE & INSTALL

SCALE: 3/4" = 1'-0"

1.5 SQ. FT.

TEXT:  
APERCU TITLE CASE BOLD

DFW MANUFACTURING / NEW VIS 2022 MUTCD PANEL

<b>Design #</b>	
0634473AR6	
<b>Sheet</b>	23 of 24
<b>Client</b>	
#5405	
<b>Address</b>	
2701 W Morgan Ave. Milwaukee, WI 53221-1133	
<b>Account Rep.</b>	KRISTEN HAMILTON BRIAN HEAD
<b>Designer</b>	LEAH LANSFORD
<b>Date</b>	1/3/23

Approval / Date	
<b>Client</b>	
<b>Sales</b>	
<b>Estimating</b>	
<b>Art</b>	
<b>Engineering</b>	
<b>Landlord</b>	

Revision/Date
R1(03/06/2023)AM: UPDATED SITE PLAN
R2(04/11/2023)AM: UPDATED SITE PLAN AND UPDATED SIGN ID A WITH NEW 27" TALL MONUMENT WITH ICON AND READERBOARD. ALSO, UPDATED CREDIT CARD STRIP ON DOOR VINYL
R3(5/23/23)LL: UPDATED TO TWO OPTIONS FOR SIGN A, CHANGED A AND B TO BE ROST
R4(5/10/23)LL: ADDED SPEC CALLOUTS FOR ROST. DELETED OPTION 1 FOR SIGN A AND CHANGED DIMS FOR OPTION 2. ADDED NIGHT VIEW FOR MONUMENT AND WALL SIGN
R5(05/24/2023)AM: CHANGES REQUESTED
SIGN A NEEDS TO INVERT THE COLORS OF THE READER BOARD REMOVE THE CALL OUT ON THE SITE PLAN FOR THE 'EXISTING MONUMENT SIGN' SIGN B - PLEASE SPELL OUT THE ROUTE OUT SHOW THROUGH DESCRIPTION AND ADD CALL OUTS FOR ILLUMINATED ACRYLIC AND PAINTED ALUMINUM PARTS OF THE SIGN ON THE RENDERING

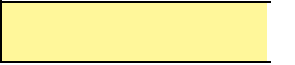


<b>National Headquarters</b>	14201 Sovereign Road #101 Fort Worth, TX 76155 (214)992-2000 Fax (214)992-2044
<b>San Antonio</b>	17319 San Pedro Ave Ste 200 San Antonio, TX 78232 (210)349-3804 Fax (210)349-8724
<b>Northeast US</b>	2301 River Road Ste 201 Louisville, KY 40206 (502) 897-9800 Cell (502) 554-2575
<b>Georgia</b>	111 Woodstone Place Dawsonville, GA 30534 (678) 725-8852 Fax (210) 349-8724
<b>South Texas</b>	PO BOX 125 206 Doral Drive Portland, TX 78374 (361) 563-5599 Fax (361) 643-6533

This drawing is the property of Chandler Signs, LLC. All rights to its use for reproduction are reserved by Chandler Signs, LLC

**FINAL ELECTRICAL CONNECTION BY CUSTOMER**

THIS SIGN IS INTENDED TO BE INSTALLED IN ACCORDANCE WITH ARTICLE 600 OF THE NATIONAL ELECTRICAL CODE AND/OR OTHER APPLICABLE LOCAL CODES. THIS INCLUDES PROPER GROUNDING & BONDING OF THE SIGN. SIGN WILL BEAR UL LABEL(S).





**DOOR ELEVATIONS**

SCALE: 3/8" = 1'-0"

VINYL COPY SHOWN IN GRAY FOR VISUAL PURPOSES ONLY



**M1 M2**

**CFA - ADDRESS VYL**

SCALE: 1 1/2" = 1'-0"

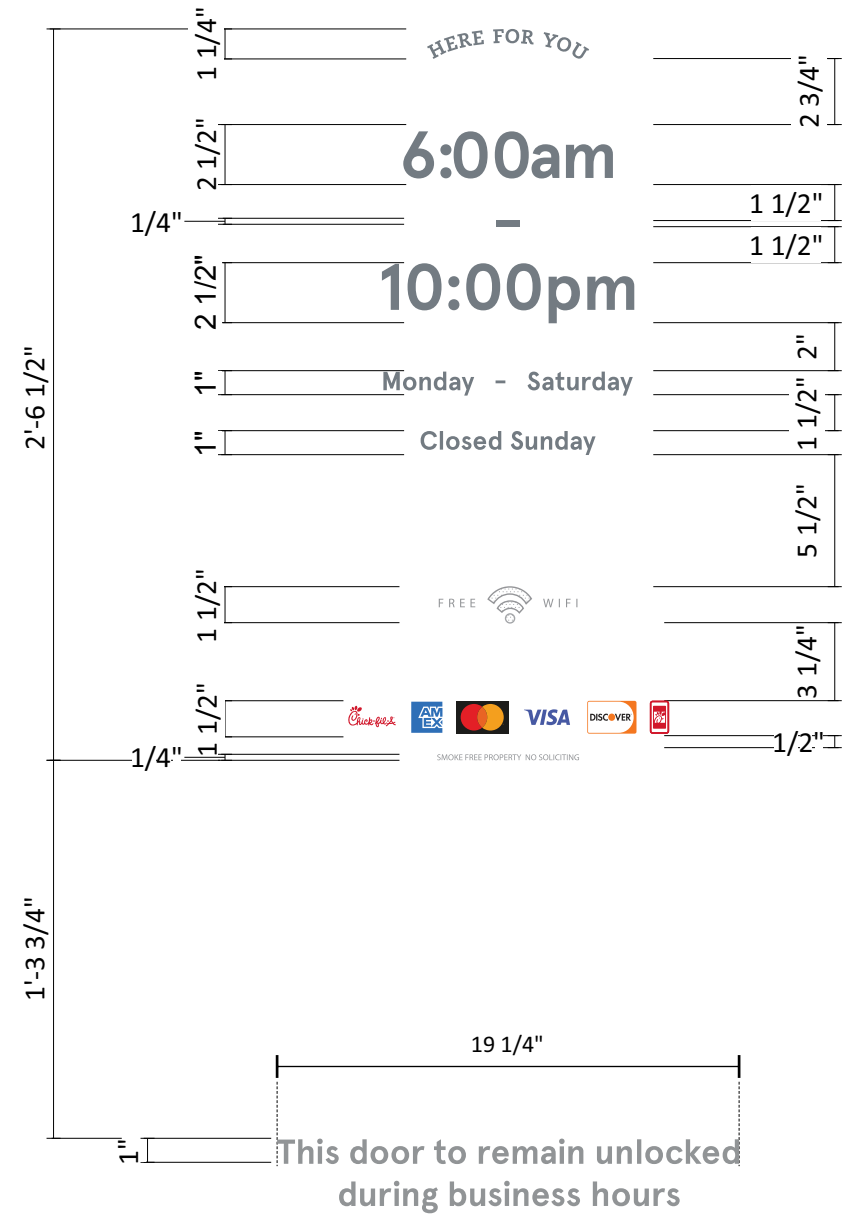
TWO ( 2 ) REQUIRED - MANUFACTURE & INSTALL

COPY TO BE OPAQUE WHITE VINYL,  
APPLIED 1ST SURFACE. (EXTERIOR OF DOOR)

EACH DIGITAL PRINT LOGO TO BE CUT INDIVIDUALLY

**1 3 5 0**

**VINYL NOTE:  
EXTRA VINYL NUMBERS TO BE INCLUDED  
ON VINYL SHEET FOR LATER USE OF  
POSSIBLE HOUR CHANGE.**



**N1 N2**

**CFA - DOOR VYL**

SCALE: 1 1/2" = 1'-0"

TWO ( 2 ) REQUIRED - MANUFACTURE & INSTALL

COPY TO BE OPAQUE WHITE VINYL,  
APPLIED 1ST SURFACE. (EXTERIOR OF DOOR)

EACH DIGITAL PRINT LOGO TO BE CUT INDIVIDUALLY

<b>Design #</b>	0634473AR6
<b>Sheet</b>	24 of 24
<b>Client</b>	#5405
<b>Address</b>	2701 W Morgan Ave. Milwaukee, WI 53221-1133
<b>Account Rep.</b>	KRISTEN HAMILTON BRIAN HEAD
<b>Designer</b>	LEAH LANSFORD
<b>Date</b>	1/3/23
<b>Approval / Date</b>	
<b>Client</b>	
<b>Sales</b>	
<b>Estimating</b>	
<b>Art</b>	
<b>Engineering</b>	
<b>Landlord</b>	

Revision/Date	
R1(03/06/2023)AM: UPDATED SITE PLAN	
R2(04/11/2023)AM: UPDATED SITE PLAN AND UPDATED SIGN ID A WITH NEW 27' TALL MONUMENT WITH ICON AND READERBOARD. ALSO, UPDATED CREDIT CARD STRIP ON DOOR VINYL	
R3(5/23/23)LL: UPDATED TO TWO OPTIONS FOR SIGN A, CHANGED A AND B TO BE ROSE	
R4(5/10/23)LL: ADDED SPEC CALLOUTS FOR ROSE, DELETED OPTION 1 FOR SIGN A AND CHANGED DIMS FOR OPTION 2. ADDED NIGHT VIEW FOR MONUMENT AND WALL SIGN	
R5(05/24/2023)AM: CHANGES REQUESTED	
SIGN A NEEDS TO INVERT THE COLORS OF THE READER BOARD REMOVE THE CALL OUT ON THE SITE PLAN FOR THE 'EXISTING MONUMENT SIGN' SIGN B - PLEASE SPELL OUT THE ROUTE OUT SHOW THROUGH DESCRIPTION AND ADD CALL OUTS FOR ILLUMINATED ACRYLIC AND PAINTED ALUMINUM PARTS OF THE SIGN ON THE RENDERING	



<b>National Headquarters</b>	14201 Sovereign Road #101 Fort Worth, TX 76155 (214)992-2000 Fax:(214)992-2044
<b>San Antonio</b>	17319 San Pedro Ave Ste 200 San Antonio, TX 78232 (210)349-3804 Fax (210)349-8724
<b>Northeast US</b>	2301 River Road Ste 201 Louisville, KY 40206 (502) 897-9800 Cell (502) 554-2575
<b>Georgia</b>	111 Woodstone Place Dawsonville, GA 30534 (678) 725-8852 Fax (210) 349-8724
<b>South Texas</b>	PO BOX 125 206 Doral Drive Portland, TX 78374 (361) 563-5599 Fax (361) 643-6533

This drawing is the property of Chandler Signs, LLC. All rights to its use for reproduction are reserved by Chandler Signs, LLC.

**FINAL ELECTRICAL CONNECTION BY CUSTOMER**

THIS SIGN IS INTENDED TO BE INSTALLED IN ACCORDANCE WITH ARTICLE 600 OF THE NATIONAL ELECTRICAL CODE AND/OR OTHER APPLICABLE LOCAL CODES. THIS INCLUDES PROPER GROUNDING & BONDING OF THE SIGN. SIGN WILL BEAR UL LABEL(S).



**M1-2, N1-2**