

S.W. 1/4 SEC. 21, T.7N., R.22E.

360

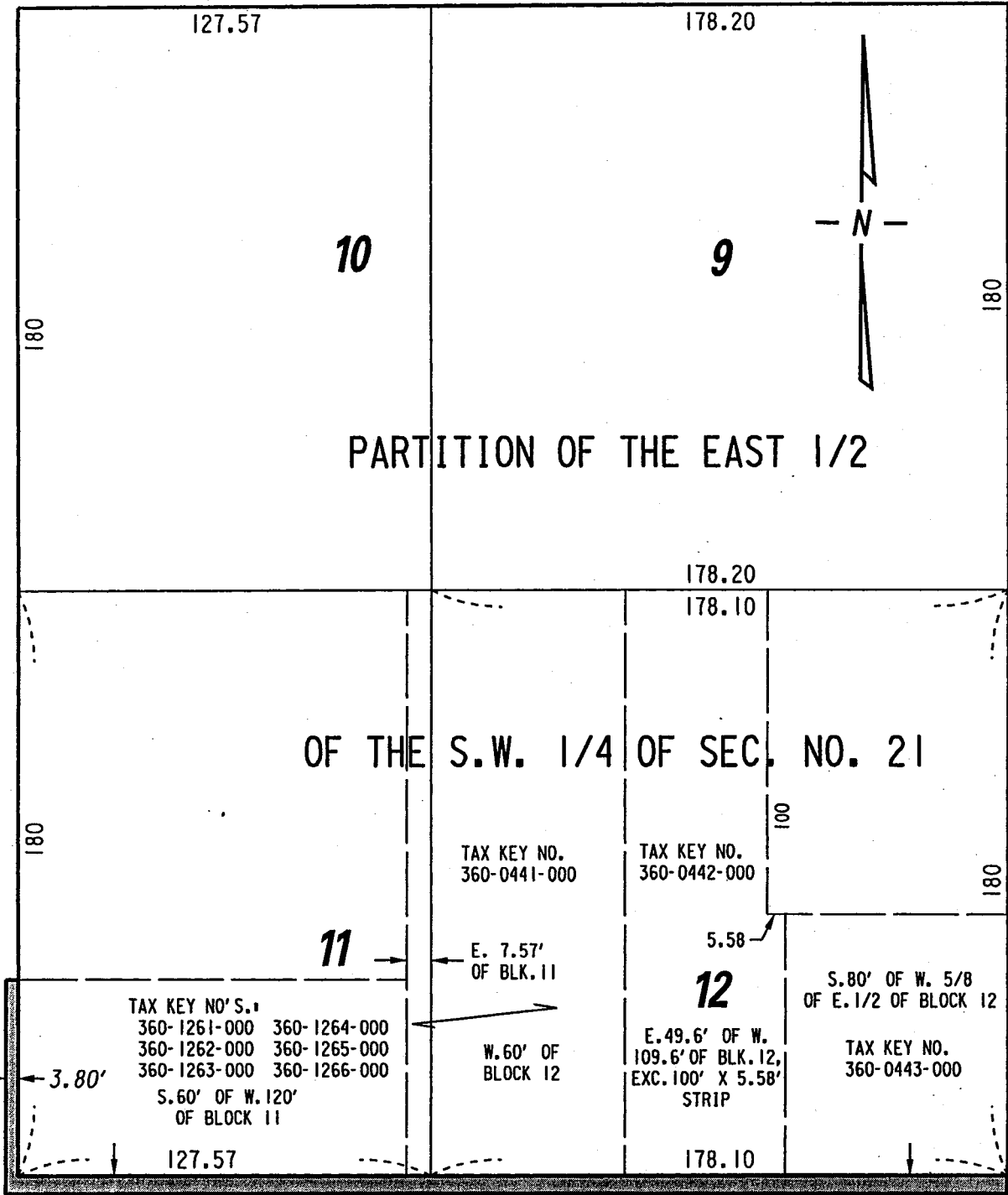
E. Pleasant

(80' R.O.W.)

St.

St.

Ave.



N. Astor

N. Humboldt

E. Lyon

(80' R.O.W.)

St.

EXHIBIT "A"

FILE NO. 011305

INFRASTRUCTURE SERVICES DIVISION

MILWAUKEE, WISCONSIN

ASSIGNED TO: W.E. FUCHS

CH'K'D. BY: M.C. WILLIAMS

DRAWN BY: W.E.F.

DATE: AUG. 13, 2002

PROJECT/GRANT NO.: WK52337149

SCALE: 1" = 50'

APPROVED BY:

Marcia Lindholm
CENTRAL DRAFTING & RECORDS MANAGER

John Blum
CITY ENGINEER

PORTIONS OF PUBLIC STREETS PROPOSED TO BE VACATED

REVISED: 8-6-2003

LIMITS REVISED