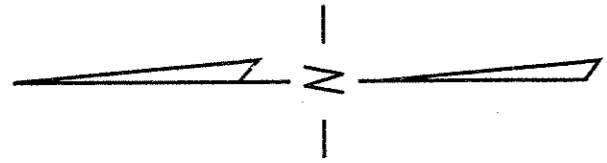
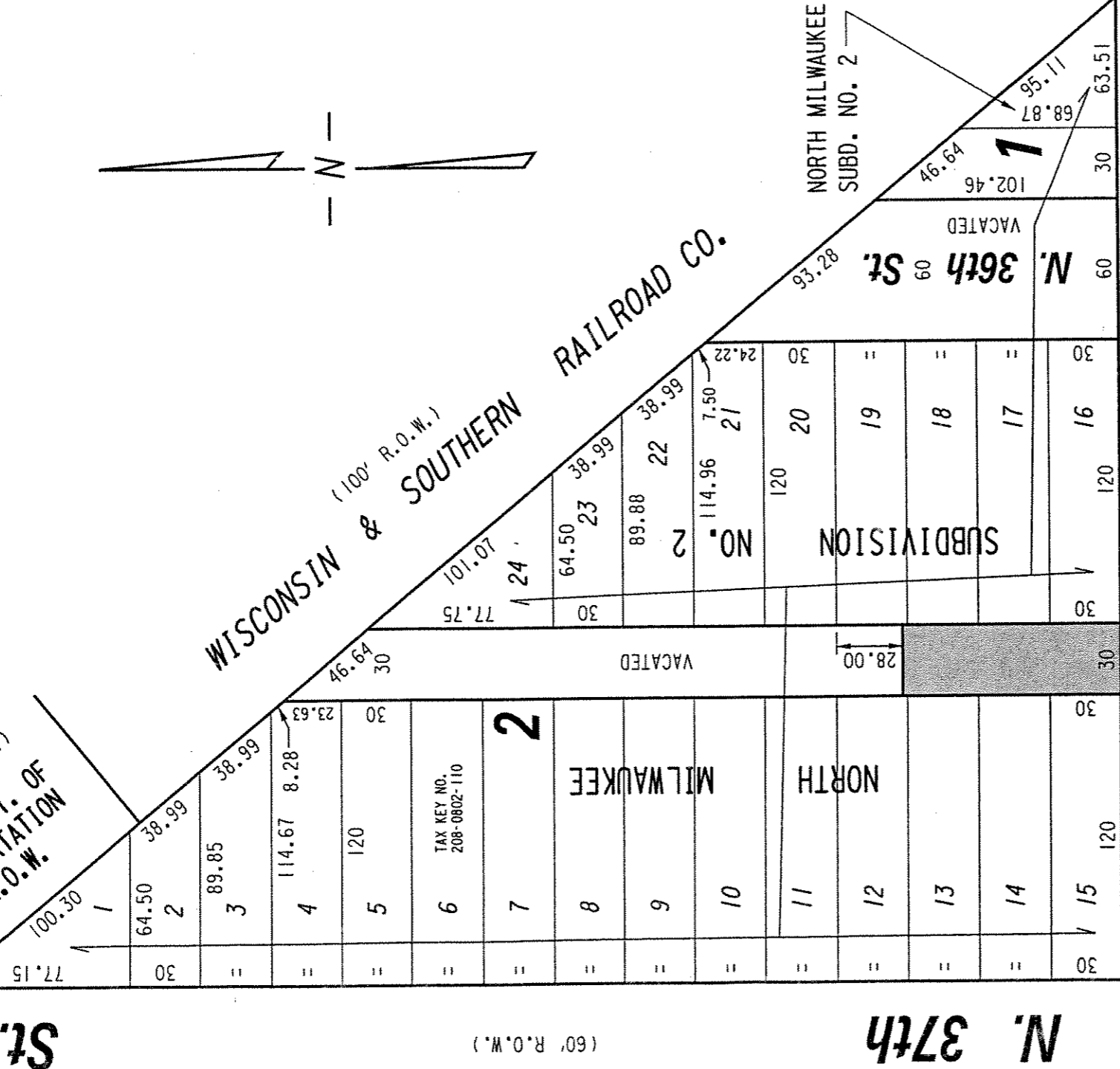


(100' R.O.W.)
WISC. DEPT. OF
TRANSPORTATION
R.O.W.

St.



WISCONSIN & SOUTHERN RAILROAD CO.
(100' R.O.W.)

(60' R.O.W.)

N. 37th

NORTH MILWAUKEE
SUBD. NO. 2

SUBDIVISION
NO. 2
N. 36th St.
VACATED

W. Fairmount

(60' R.O.W.)

Ave.

PORTION OF PUBLIC
ALLEY PROPOSED
TO BE VACATED

EXHIBIT "A"
FILE NO. 051564

INFRASTRUCTURE SERVICES DIVISION

MILWAUKEE, WISCONSIN

ASSIGNED TO: P.A. VELLA
DRAWN BY: P.A.V.
PROJECT/GRANT NO.: WK52337233
APPROVED BY:

CH'K'D. BY: W.E. FUCHS

DATE: JULY 10, 2006

SCALE: 1" = 60'

Marcia Smichols
CENTRAL DRAFTING & RECORDS MANAGER

W.E. Fuchs
CITY ENGINEER