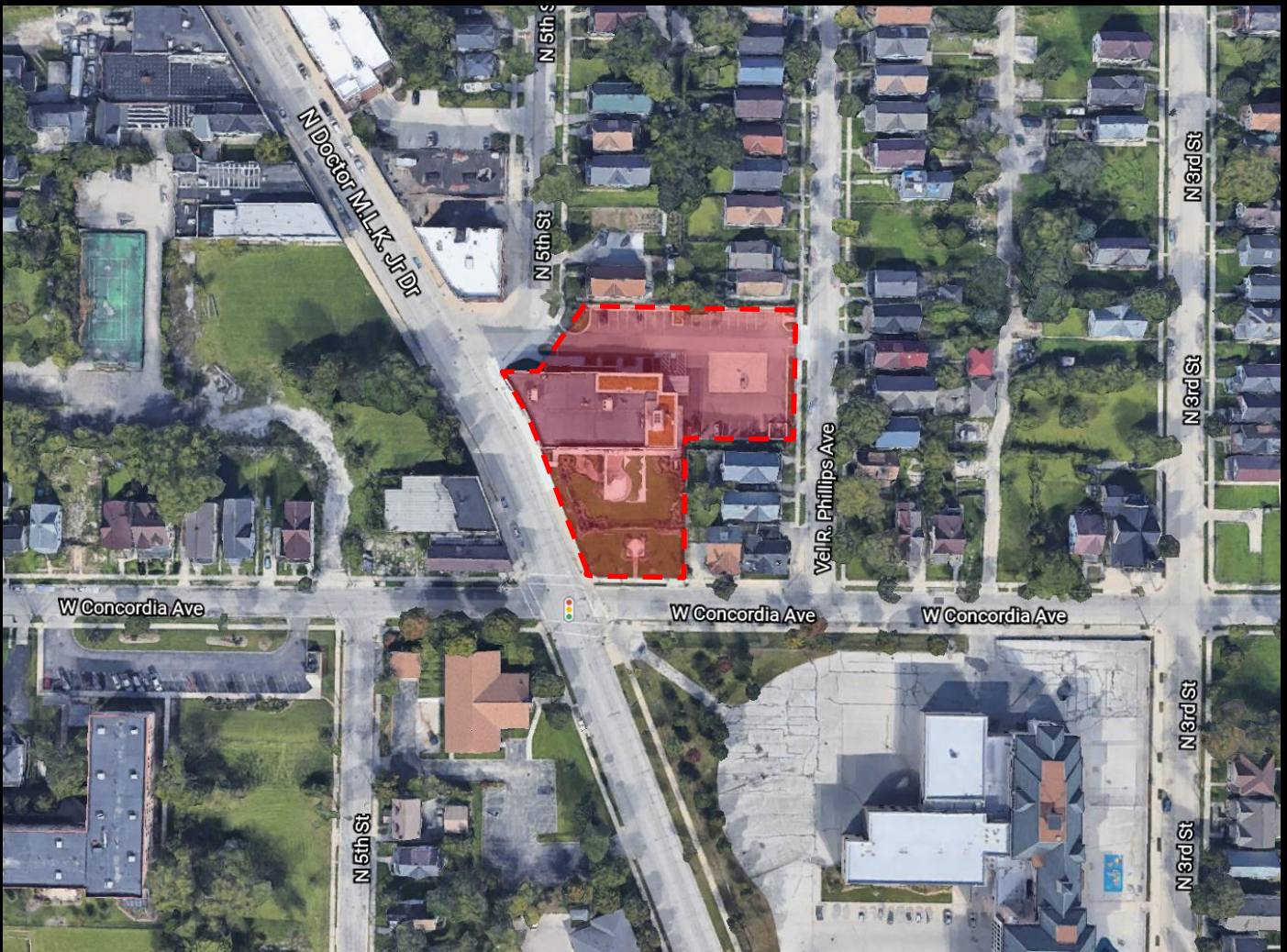
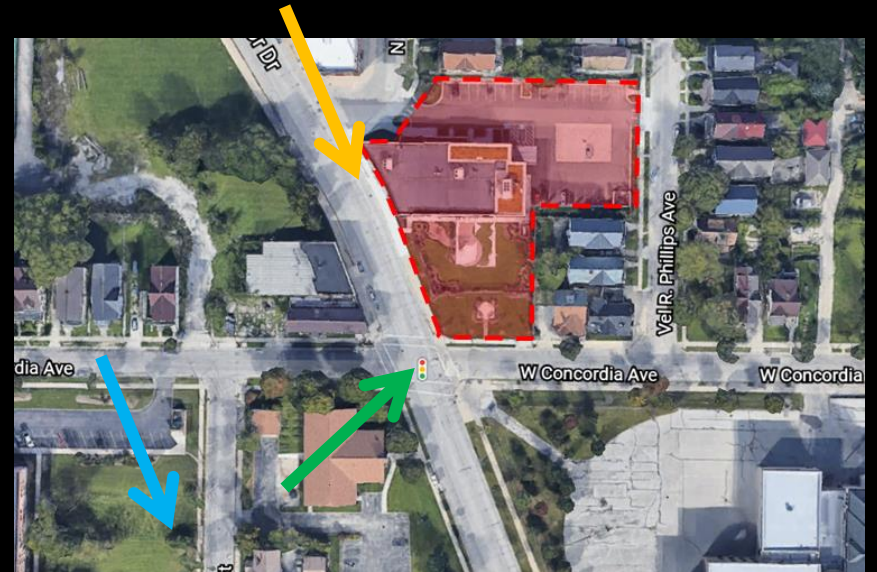


File No. 200461. Substitute resolution relating to a Minor Modification to the Detailed Planned Development known as Bader Philanthropies to allow a digital monument sign with LED changeable messages at its headquarters located at 3300 North Dr. Martin Luther King Jr. Drive, on the east side of North Dr. Martin Luther King Jr. Drive, north of West Concordia Avenue, in the 6th Aldermanic District.

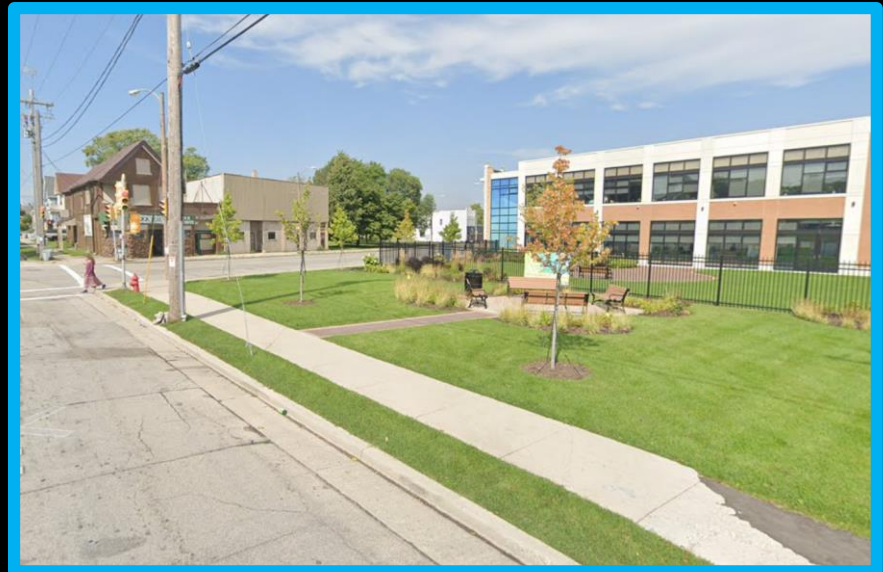




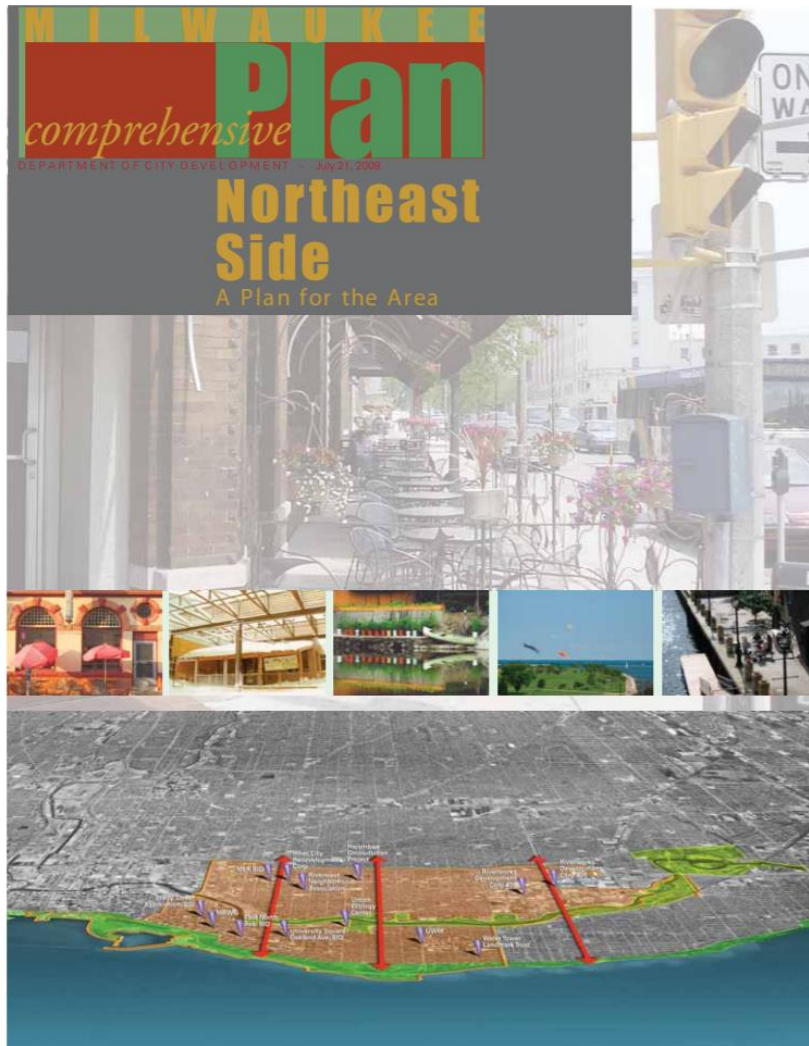
View from N MLK Dr looking south



View from MLK and Concordia looking north-east

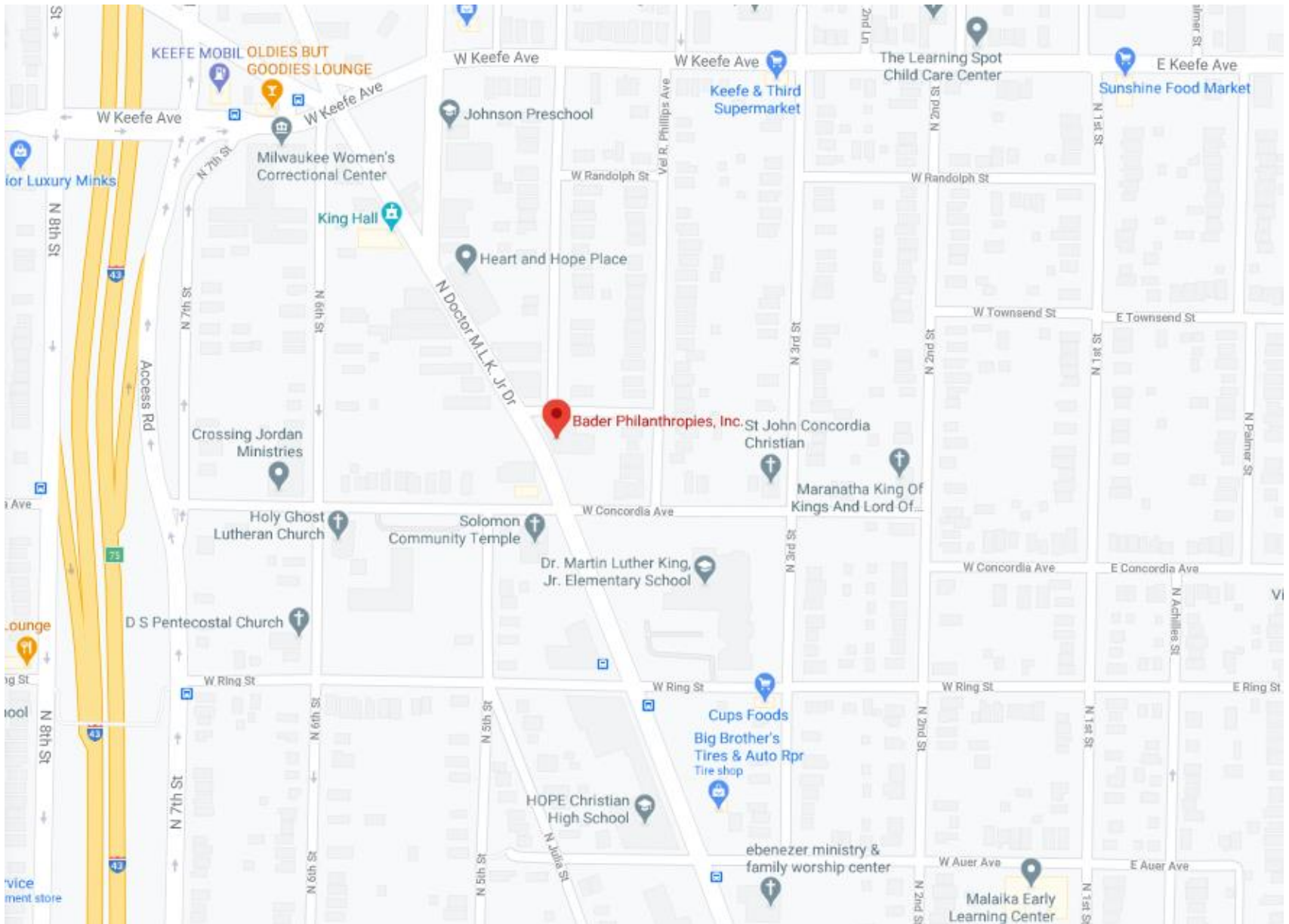


View from W Concordia Ave looking north-west



2009: Northeast Side Area Plan

- Recommends to “Develop civic and institutional uses that are welcoming places for people to gather, serve as landmarks for the community, and enrich public life”
- The sign will add visual interest to the street and complement the park like setting that Bader has created on this part of their property.
- The proposed sign is not inconsistent with the Area plan.





BADER
PHILANTHROPIES, INC.

BADER ←
PHILANTHROPIES, INC.

ALVIN W. BADER
PHILANTHROPIES

POWELL

W. 10th St



BADER
PHILANTHROPIES, INC.

BADER



THE MUSE
ARTISTS

5
SPEED LIMIT 30



19 GREENBAY 27

BAUER

SPEED LIMIT 30

GREENBAY

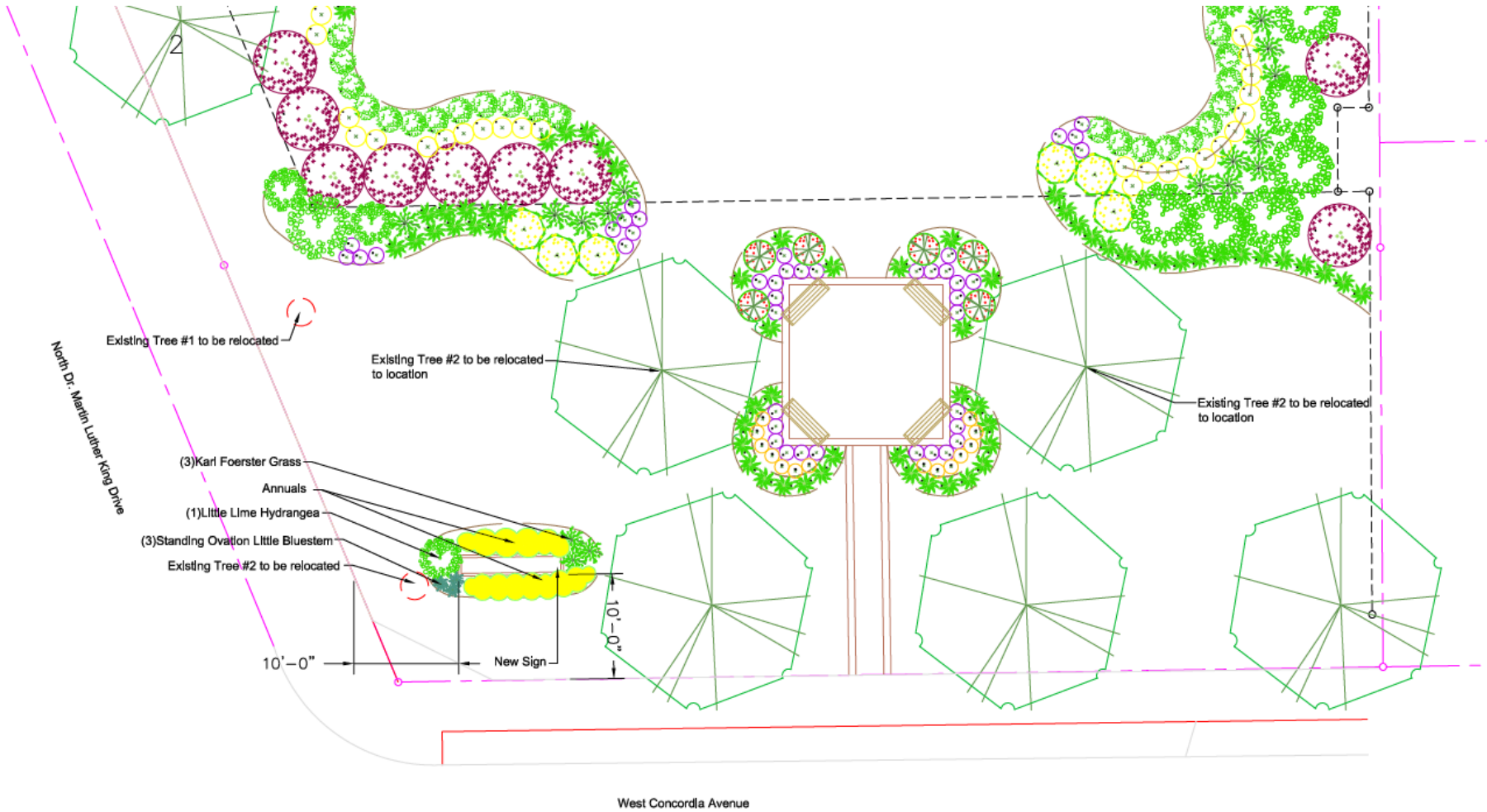
GREENBAY

GREENBAY

Ariel View



Location of proposed sign



Plant List

Quan	Common Name	Botanical Name	Size
(1)	Little Lime Hydrangea	Hydrangea paniculata 'Jane'	24"
(3)	Karl Foerster Grass	Calamagrostis acutiflora 'Karl Foerster'	3 Gal.
(3)	Standing Ovation Little Bluestem	Schizachrium scoperium 'Standing Ovation'	1 Gal.
(50 sf)	Varied Annuals		

SIGN SPECIFICATIONS

[A] - CABINET

Lighting: Lit
 Material: Lexan
 Face Color: White
 Cabinet Color: Black
 Voltage: [TBD]
 Installation: New Structure

[B] - GRAPHICS

Material: Vinyl
 Color: Yellow [TBD]

[C] - GRAPHICS

Material: Vinyl
 Color: Dark Grey [TBD]

[D] - GRAPHICS

Material: Vinyl
 Color: Black

[E] - EDS UNIT

Voltage: [TBD]
 Manufacturer: Watchfire
 Model: W10mm
 Cabinet Size: 41"h x 6'-3"
 Viewing Area: 38"h x 6'-0"
 Pixel Matrix: 90 x 180
 Installation: Built into Structure

[F] - NON-ILLUMINATED LETTERS

Description: FCO
 Material: Aluminum
 Depth: 1/8"
 Face Color: White
 Returns: White
 Installation: Flush to masonry base

[G] - BASE CAP

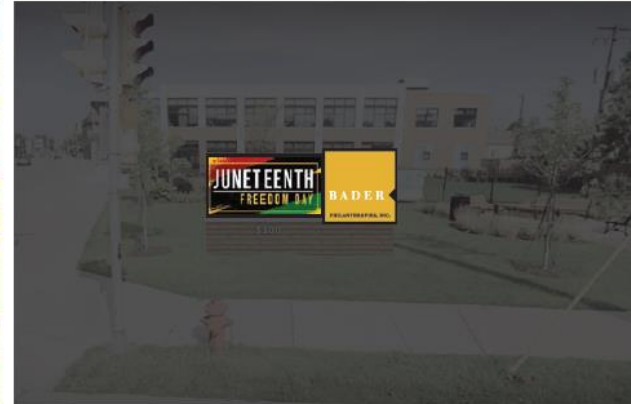
Material: Aluminum
 Color: Paint Light Grey [TBD]

[H] - BASE

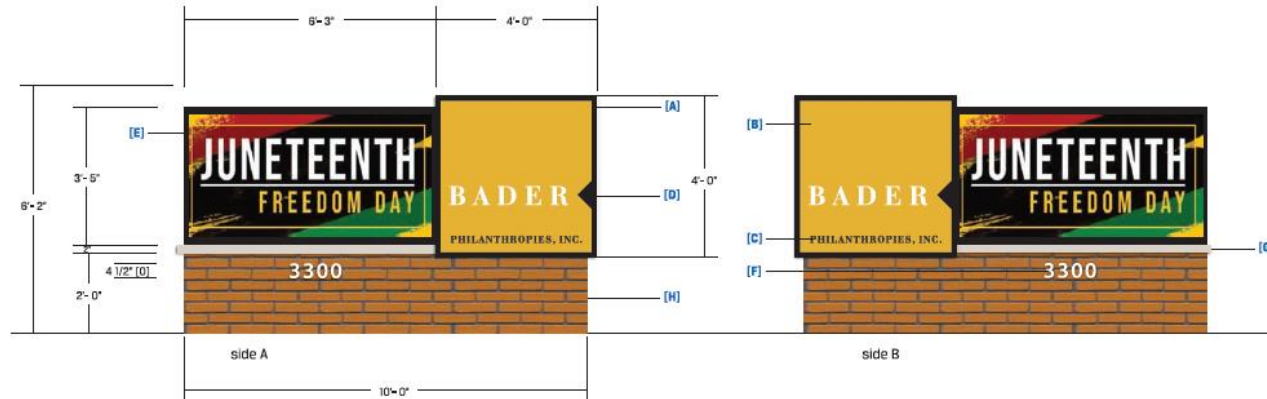
Material: Masonry



proposed layout - approx. size & location



proposed layout - night view



222 S. 70th St., Milwaukee, WI 53214
 414.453.4010 • www.poblocki.com

This document is owned by and the information contained in it is proprietary to Poblocki Sign Company, LLC. By message received, the reader agrees not to use the information, disclose it to any third party or reproduce this document without the prior written consent of Poblocki Sign Company, LLC. Reader also agrees to immediately return this document upon request by Poblocki Sign Company, LLC. This document represents only an approximation of material colors specified. Actual product colors may vary from this print or digital image.

Project



Milwaukee, WI

Scale: 3/8"=1'

Original Page Size: 11" x 17"

Notes

YELLOW COLOR [TBD]

DARK GREY [TBD]

LIGHT GREY [TBD]

Revisions

REV	DESCRIPTION	BY	DATE
01	size/Layout	seb	08/10/20
02	layout/material	seb	08/10/20

Rep: Blair Benes
 Drawn by: Sarah Blagioni
 Date: 08/06/20

Sign Log No.

MON-01

D/F Monument

Sign Type

89445

OPP - Project - Job No.

C02

Design