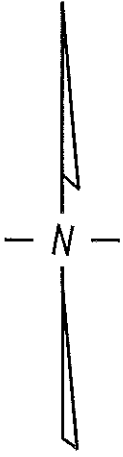


# W. Roosevelt Dr.

(120' R.O.W.)



30 30  
**St.**

**St.**

45.03	42	"	"	42	45.03		
115	1	2	3	4	5	6	115
47.66	42			42	42.40		

LANDS

TAX KEY NO.  
246-9998-120

**N. 30th**

18	38.26	7	120.03	41.03	18
			TAX KEY NO. 246-0185-000		
40	40	8	120	40	40
			TAX KEY NO. 246-0186-000		
"	"	9	TAX KEY NO. 246-0187-000	"	"
"	"	10	TAX KEY NO. 246-0188-000	4	"
"	"	11	TAX KEY NO. 246-0189-000	"	"
"	"	12	TAX KEY NO. 246-0190-000	"	"
"	"	13	TAX KEY NO. 246-0191-000	"	"
"	"	14	TAX KEY NO. 246-0192-000	"	"
40	40	15	TAX KEY NO. 246-0193-000	40	40
			120		
42.77	42.77	16	TAX KEY NO. 246-0194-000	40	40
			120.03		

18	38.26	26	120.03	41.03	18
			TAX KEY NO. 246-0185-000		
40	40	25	120	40	40
			TAX KEY NO. 246-0186-000		
"	"	24	TAX KEY NO. 246-0187-000	"	"
"	"	23	TAX KEY NO. 246-0188-000	"	"
"	"	22	TAX KEY NO. 246-0189-000	"	"
"	"	21	TAX KEY NO. 246-0190-000	"	"
"	"	20	TAX KEY NO. 246-0191-000	"	"
"	"	19	TAX KEY NO. 246-0192-000	"	"
40	40	18	TAX KEY NO. 246-0193-000	40	40
			120		
42.77	42.77	17	TAX KEY NO. 246-0194-000	40	40
			120.03		

(60' R.O.W.)

**N. 29th**

LANDS

TAX KEY NO.  
246-9998-210

PUBLIC STREET AND ALLEY PROPOSED TO BE VACATED

(MAP 1 OF 2)

## EXHIBIT "A" FILE NO. 141269

### INFRASTRUCTURE SERVICES DIVISION

MILWAUKEE, WISCONSIN

ASSIGNED TO: W. FUCHS

CH'K'D. BY: W. FUCHS

DRAWN BY: W.F.

DATE: JAN. 25, 2016

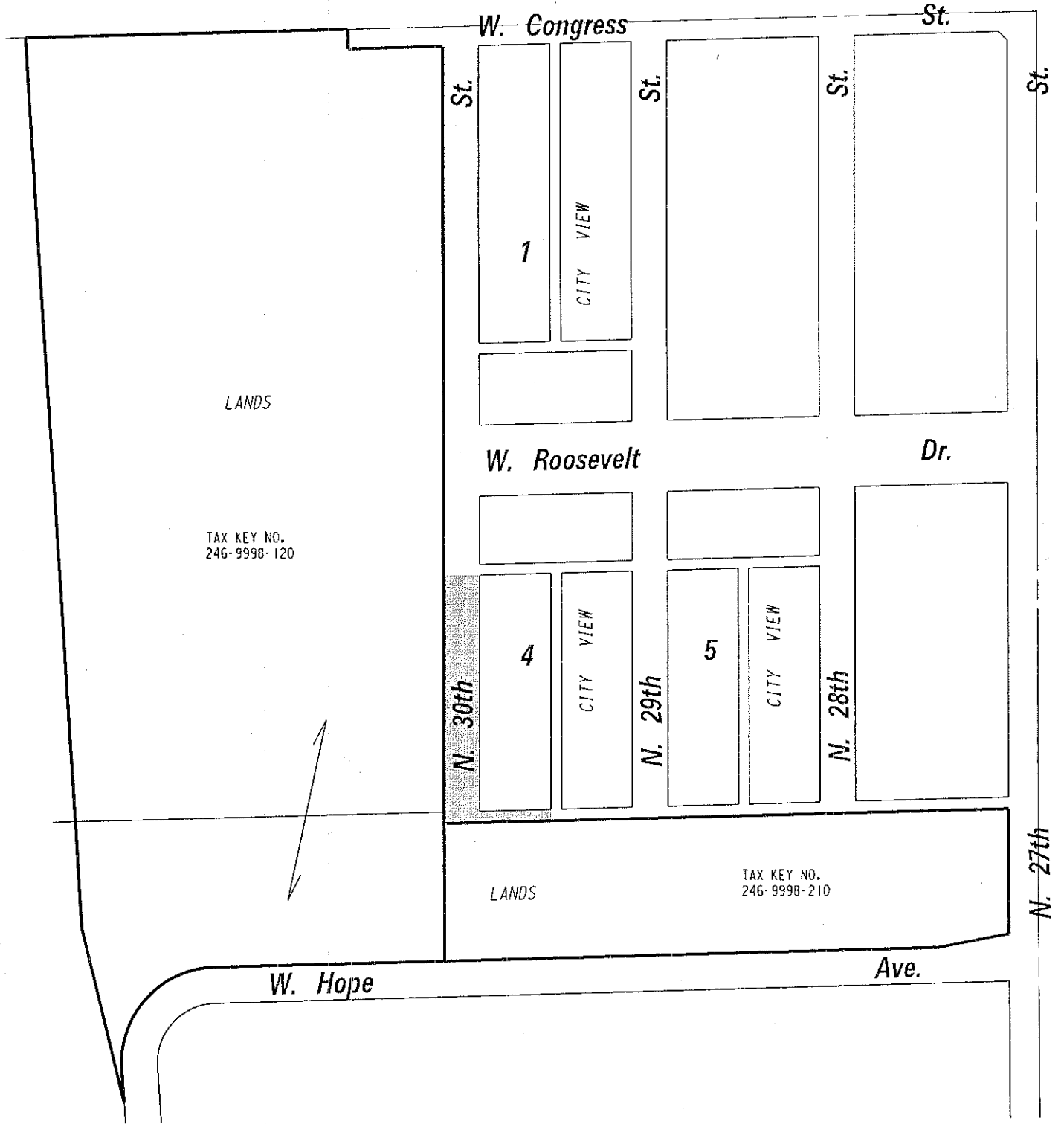
PROJECT/GRANT NO.: WK52337365

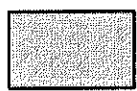
SCALE: 1" = 60'

APPROVED BY:

CENTRAL DRAFTING & RECORDS MANAGER

ENGINEER



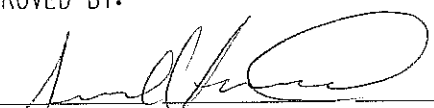
 PUBLIC STREET AND ALLEY PROPOSED TO BE VACATED


( MAP 2 OF 2 )

EXHIBIT "A"  
 FILE NO. 141269  
 INFRASTRUCTURE SERVICES DIVISION  
 MILWAUKEE, WISCONSIN

ASSIGNED TO: W. FUCHS  
 DRAWN BY: W.F.  
 PROJECT/GRANT NO.: WK52337365  
 APPROVED BY:

CH'K'D. BY: W. FUCHS  
 DATE: JAN. 25, 2016  
 SCALE: 1" = 60'

  
 CENTRAL DRAFTING & RECORDS MANAGER

  
 ENGINEER