

S.W. 1/4 SEC. 20, T.7N., R.22E.

362

361

S.E. 1/4 SEC. 20, T.7N., R.22E.

W. Fond du Lac Ave.

Ave.

W. McKinley Ave.

St.

St.

N. 6th

N. 5th

Ave.

W. Juneau

(R.O.W. VARIES)

(MAP 1 OF 2)

PARK EAST ON THE WEST SIDE (MILW. CO.)

OF THE MILWAUKEE RIVER

PARK EAST ON THE WEST SIDE

SIDE OF THE MILWAUKEE RIVER

EXHIBIT "A"

FILE NO. 151185

INFRASTRUCTURE SERVICES DIVISION

MILWAUKEE, WISCONSIN

ASSIGNED TO: W. FUCHS

CH'K'D. BY: W. FUCHS

DRAWN BY: W.F.

DATE: JAN. 6, 2016

PROJECT/GRANT NO.: WK52337378

SCALE: 1" = 100'

APPROVED BY:

[Signature]

[Signature]

CENTRAL DRAFTING & RECORDS MANAGER

CITY ENGINEER

PUBLIC ALLEYS PROPOSED TO BE VACATED

S.E. 1/4 SEC. 20, T.7N., R.22E.

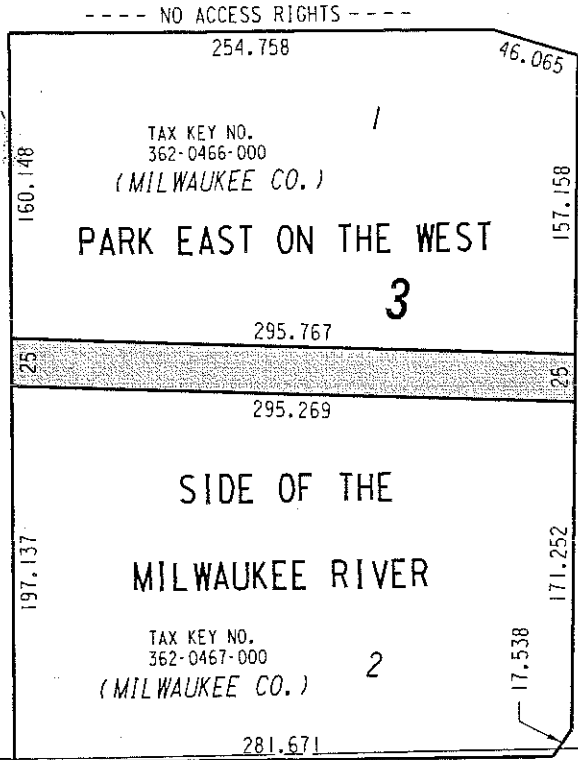
361

W. McKinley

St.

(70' R.O.W.)

N. 5th



50' TYP.

St.

(R.O.W. VARIES)

N. 4th

(R.O.W. VARIES)

W. Juneau

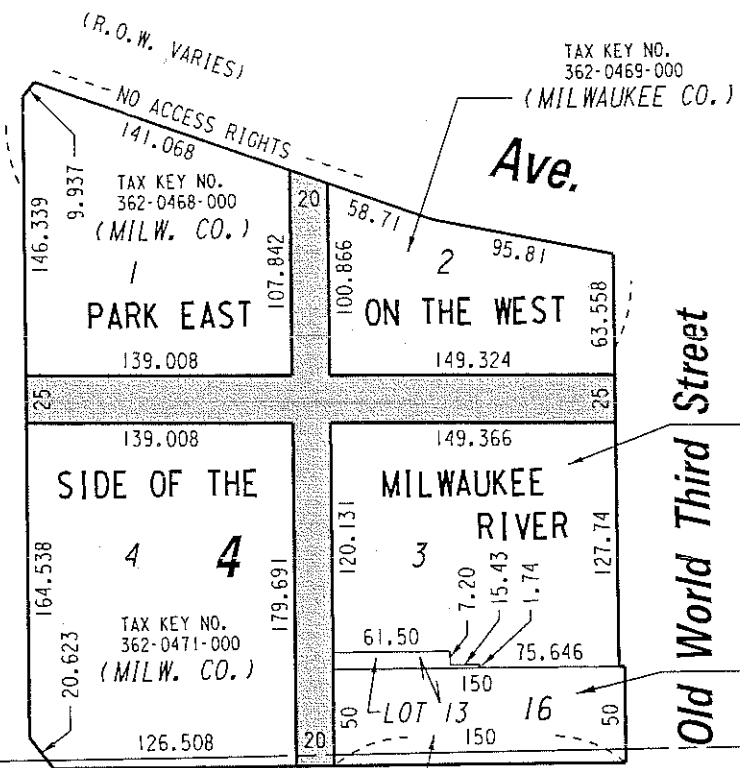
(R.O.W. VARIES) (RACM) TAX KEY NO. 361-0409-100

Ave.

N.E. 1/4 SEC. 29, T.7N., R.22E.

392

(MAP 2 OF 2)

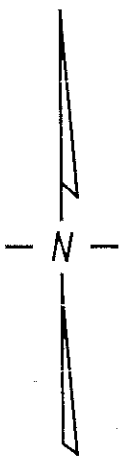


TAX KEY NO. 362-0469-000 (MILWAUKEE CO.)

Old World Third Street

TAX KEY NO. 362-0470-000 (MILWAUKEE CO.)

PLAT OF THE TOWN OF MILWAUKEE ON THE WEST SIDE OF THE RIVER BLK. 39



PUBLIC ALLEYS PROPOSED TO BE VACATED

EXHIBIT "A"

FILE NO. 151185

INFRASTRUCTURE SERVICES DIVISION

MILWAUKEE, WISCONSIN

ASSIGNED TO: W. FUCHS

CH'K'D. BY: W. FUCHS

DRAWN BY: W.F.

DATE: JAN. 6, 2016

PROJECT/GRANT NO.: WK52337378

SCALE: 1" = 100'

APPROVED BY:

Handwritten signatures and titles: CENTRAL DRAFTING & RECORDS MANAGER, CITY ENGINEER