

**ICON Venue
Group, LLC.**

1234 N. 4th Street
Milwaukee, WI
53212

RINKA CHUNG
ARCHITECT
1234 N. 4th Street
Milwaukee, WI 53212

KAPUR & ASSOCIATES, INC.
CONSULTING ENGINEERS
1234 N. 4th Street
Milwaukee, WI 53212

HARDSCAPE SCHEDULE

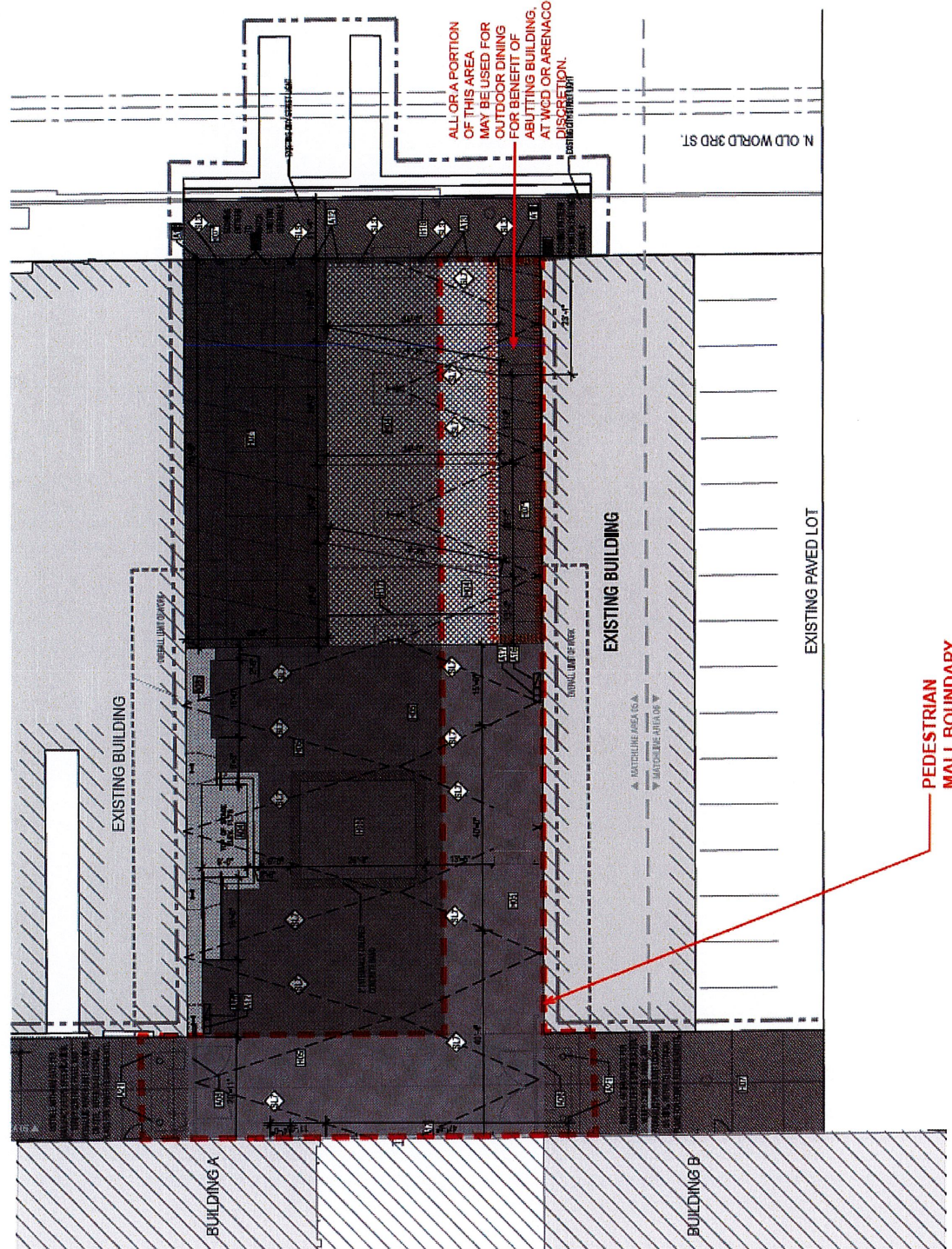
| REF | SYMBOL | DESCRIPTION |
|------|----------|---------------------------------|
| EM4 | [Symbol] | CLAY BRICK PAVING, TYPE 1 |
| EM5 | [Symbol] | CLAY BRICK PAVING, TYPE 2 |
| EM6 | [Symbol] | CONCRETE PAVING |
| EM7 | [Symbol] | PERMEABLE PAVING |
| EM8 | [Symbol] | TRENCH DRAIN IN CURB |
| EM9 | [Symbol] | CONCRETE CURB (SEE CIVIL PLANS) |
| EM10 | [Symbol] | CONCRETE CURB (SEE CIVIL PLANS) |
| EM11 | [Symbol] | SAW CUT CONTROL JOINT, TYP. |
| EM12 | [Symbol] | SAW CUT CONTROL JOINT, TYP. |

SITE AMENITIES SCHEDULE

| REF | SYMBOL | DESCRIPTION |
|------|----------|---|
| AM4 | [Symbol] | BEER CASTER STAGE |
| AM5 | [Symbol] | STREET VEHICULAR DATE |
| AM6 | [Symbol] | PRECAST SLAB BARS TYPE 2 |
| AM7 | [Symbol] | CONCRETE SLAB WITH BOLLARD, SHALLOW WHEEL |
| AM8 | [Symbol] | REINFORCED CONCRETE BARRIERS |
| AM9 | [Symbol] | WASTE RECEPTACLE |
| AM10 | [Symbol] | RECYCLING RECEPTACLE |
| AM11 | [Symbol] | WASTEBASKET WITH UTILITY METER/BOX, COORDINATE WITH CIVIL |
| AM12 | [Symbol] | WATERMILL GATE |

SITE LIGHTING SCHEDULE

| REF | SYMBOL | DESCRIPTION |
|-----|----------|-------------------|
| SL1 | [Symbol] | RECESSED LIGHTING |
| SL2 | [Symbol] | RECESSED LIGHTING |



ALL OR A PORTION OF THIS AREA MAY BE USED FOR OUTDOOR DINING FOR BENEFIT OF ABUTTING BUILDING AT WCD OR ARENAGO AT DISCRETION.



NOT FOR CONSTRUCTION

| NO. | DATE | DESCRIPTION |
|-----|---------|-------------------|
| 1 | 1/17/18 | ISSUED FOR PERMIT |
| 2 | 1/17/18 | ISSUED FOR PERMIT |
| 3 | 1/17/18 | ISSUED FOR PERMIT |
| 4 | 1/17/18 | ISSUED FOR PERMIT |

ISSUED FOR PERMIT
1/17/2018

ISSUED FOR PERMIT
1/17/2018

ENLARGED SITE LANDSCAPE PLAN
- HARDSCAPE

SHEET NUMBER
1

LANDSCAPE HARDSCAPE PLAN - ENLARGED
SHEET 01

**ICON Venue
Group, LLC.**

1224 N. 4th Street
Milwaukee, WI 53212
Tel: 303.796.2655
Fax: 303.796.2658

RINKAICHUNG

735 N. Milwaukee St.
Suite 250
Milwaukee, WI 53202
United States
Tel: 414.431.8101

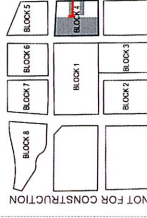
KAPUR & ASSOCIATES, INC.

100 N. MILWAUKEE ST. 4TH FLOOR
7711 N. PORT WASHINGTON ROAD
MILWAUKEE, WISCONSIN 53211
Phone: 414.551.6666 Fax: 414.551.4117
www.kapurgroupinc.com

DPD SUBMITTAL

| A | DATE | DESCRIPTION |
|---|------|-------------|
| | | |

BLOCK 4 - PEDESTRIAN MALL



PROJECT NUMBER
160203

DATE
JANUARY 17, 2018
SHEET NAME
PERSPECTIVE VIEW
SHEET NUMBER



VIEW LOOKING WEST TOWARD 4TH STREET
PLAZA FROM OLD WORLD 3RD STREET
NOT TO SCALE