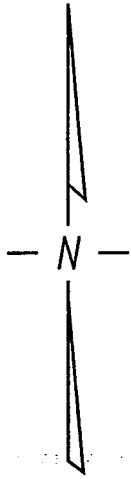


N.W. 1/4 SEC. 29, T.7N., R.22E.

391

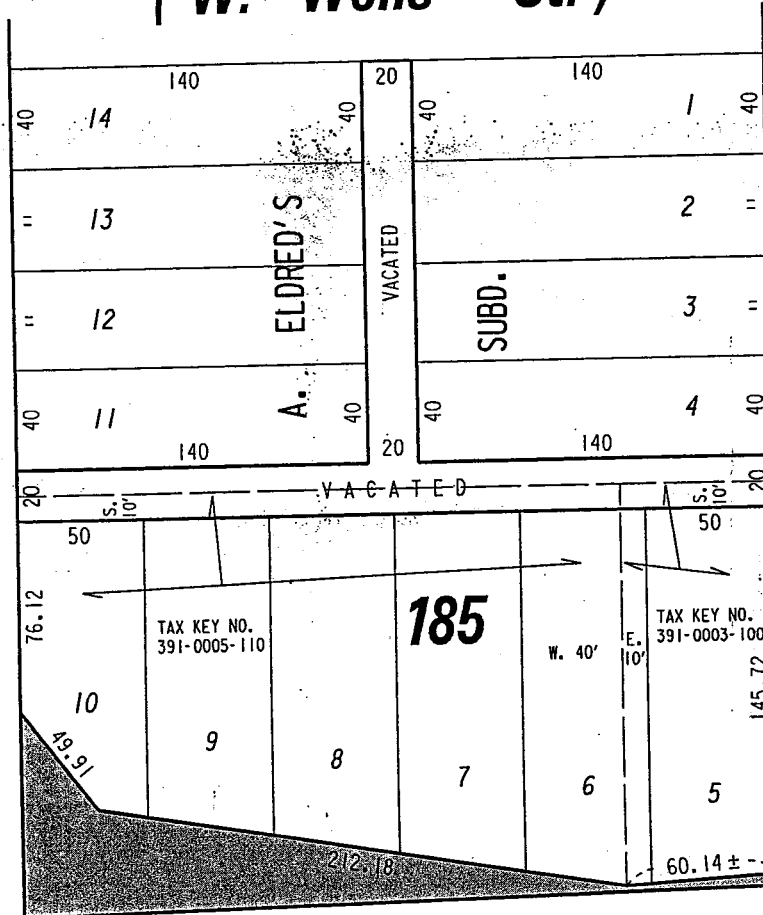


(W. Wells St.)

St.

N. 12th

70



St.

N. 11th

70

W. Wisconsin

Ave.

1/4 SEC. LINE

(R.O.W. VARIES)



PORTION OF PUBLIC STREET PROPOSED TO BE VACATED

EXHIBIT "A"
FILE NO. 021423

INFRASTRUCTURE SERVICES DIVISION

MILWAUKEE, WISCONSIN

ASSIGNED TO: W.E. FUCHS

CH'K'D. BY: M.C. WILLIAMS

DRAWN BY: W.E.F.

DATE: MARCH 24, 2003

PROJECT/GRANT NO.: WK52337172

SCALE: 1" = 60'

APPROVED BY:

Marcia Lindholm

John Williams

CENTRAL DRAFTING & RECORDS MANAGER

CITY ENGINEER