

55 N. 65th St.	ASSESSMENT SUBD. NO. 84	ROYAL TERRACE	ASSESSMENT SUBD. NO. 84
-------------------	----------------------------	---------------	----------------------------

**EXHIBIT "A"**  
**( MAP 1 OF 2 )**  
**FILE NO. 170502**

**INFRASTRUCTURE SERVICES DIVISION**

MILWAUKEE, WISCONSIN

ASSIGNED TO: W. FUCHS

CH'K'D. BY: W. FUCHS

DRAWN BY: W.F.

DATE: AUG. 10, 2017

PROJECT/GRANT NO.: WK52337400

SCALE: N.T.S.

APPROVED BY:

*John M. ...*

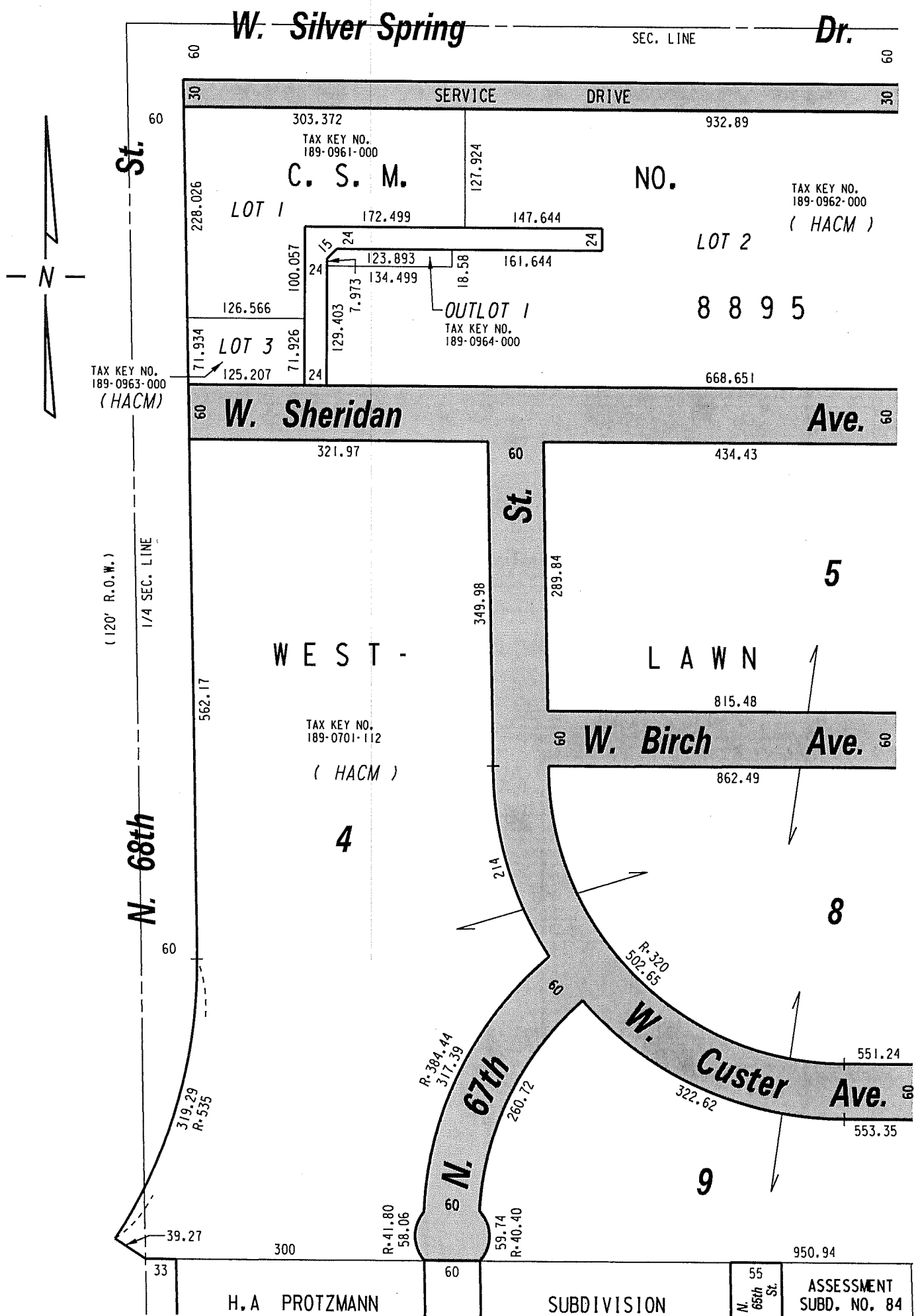
*[Signature]*

CENTRAL DRAFTING & RECORDS MANAGER

CITY ENGINEER



PUBLIC STREETS  
PROPOSED TO  
BE VACATED



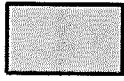
TAX KEY NO. 189-0963-000 (HACM)

C. S. M. NO.

TAX KEY NO. 189-0962-000 (HACM)

WEST -

TAX KEY NO. 189-0701-112 (HACM)

 PUBLIC STREETS PROPOSED TO BE VACATED

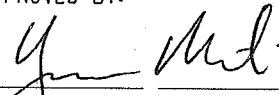
( MAP 2 OF 2 )

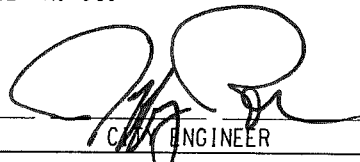
EXHIBIT "A"  
FILE NO. 170502

INFRASTRUCTURE SERVICES DIVISION  
MILWAUKEE, WISCONSIN

ASSIGNED TO: W. FUCHS  
DRAWN BY: W.F.  
PROJECT/GRANT NO.: WK52337400  
APPROVED BY:

CH'K'D. BY: W. FUCHS  
DATE: AUG. 10, 2017  
SCALE: N.T.S.

  
CENTRAL DRAFTING & RECORDS MANAGER

  
ENGINEER