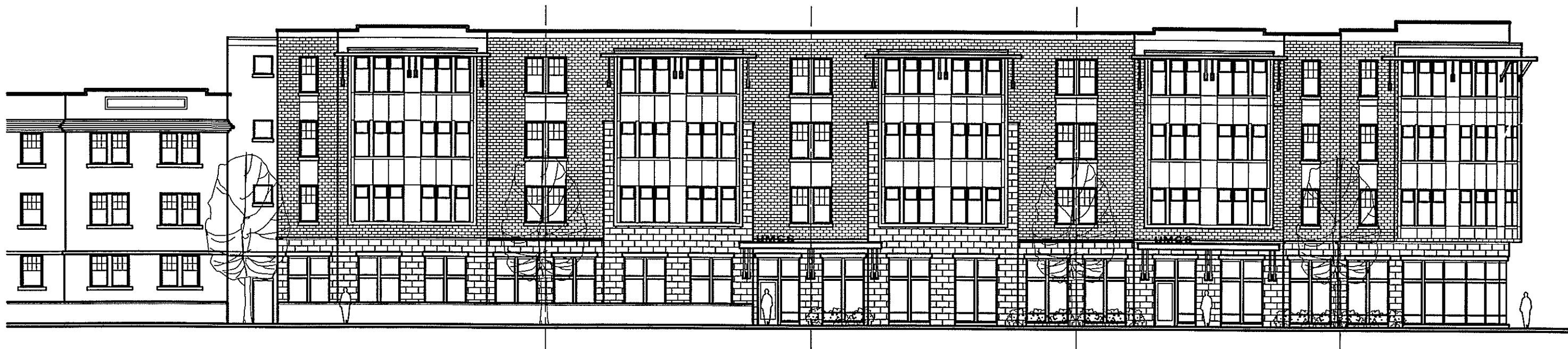


**UNITED METHODIST CHILDREN'S SERVICES**

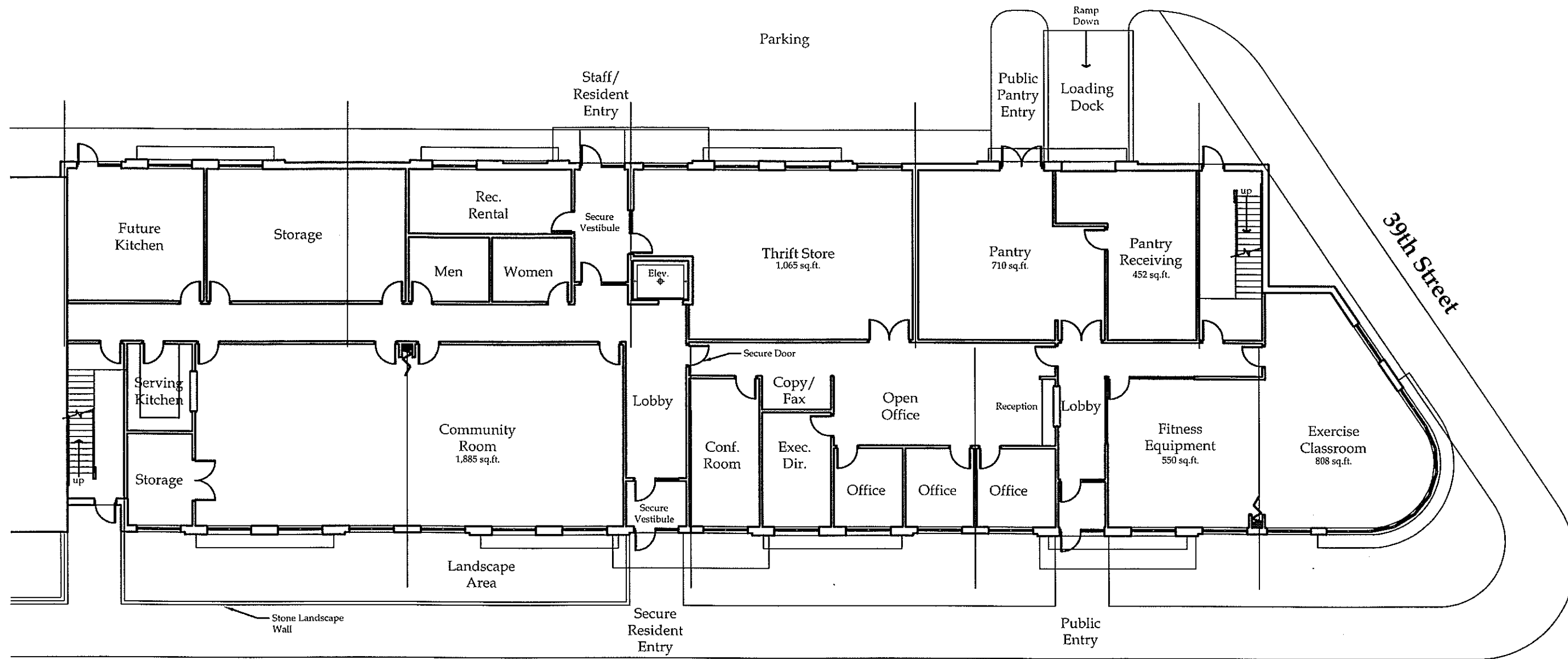


**UNITED METHODIST CHILDREN'S SERVICES**

Lisbon Street Elevation  
EADP Project No. 061688

Engberg Anderson  Design Partnership, Inc.

Scale: 1/16"=1'-0"  
December 17, 2007

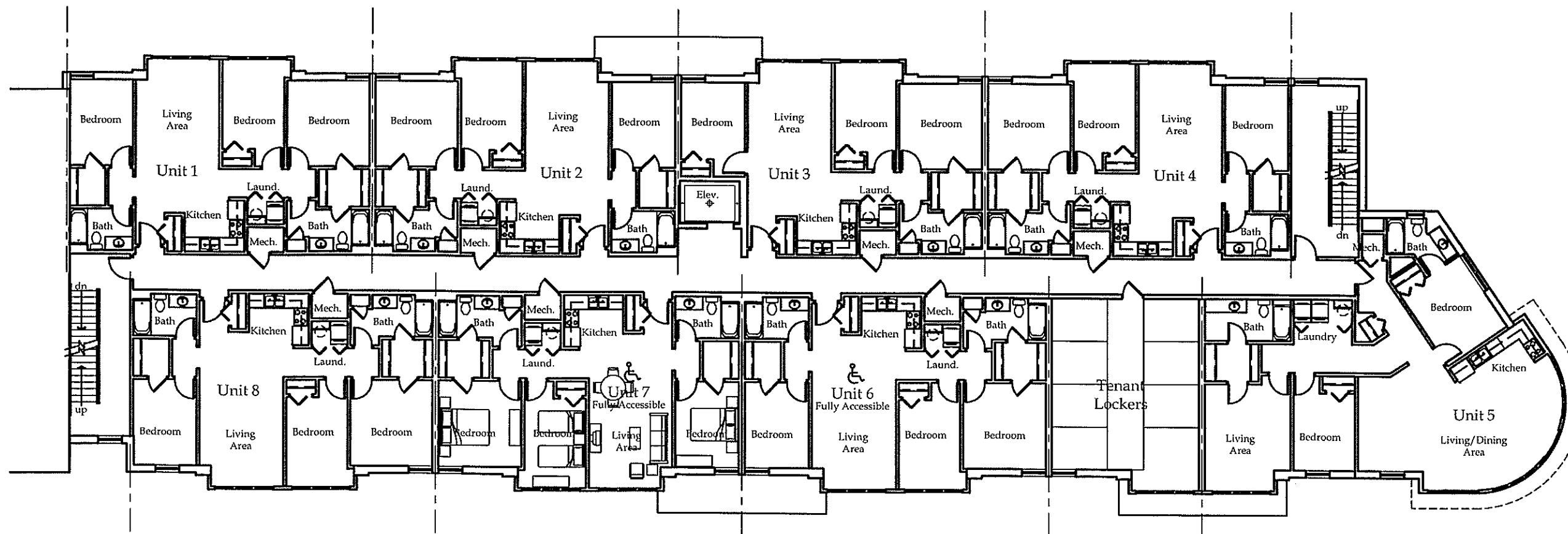


**Building Data**

	Gross Area	# of Units
Basement	5,132 sq.ft.	
First Floor	10,873 sq.ft.	
Second Floor	11,283 sq.ft.	8 Units
Third Floor	11,283 sq.ft.	8 Units
Fourth Floor	11,283 sq.ft.	8 Units
Total	49,854 sq.ft.	24 Units

**Lisbon Avenue**

**UNITED METHODIST CHILDREN'S SERVICES**



**Dwelling Unit Data** (per floor)

Unit #	# of Bedrooms	Gross Area
Unit 1	3 Bedroom	1,133 sq.ft.
Unit 2	3 Bedroom	1,133 sq.ft.
Unit 3	3 Bedroom	1,040 sq.ft.
Unit 4	3 Bedroom	1,133 sq.ft.
Unit 5	3 Bedroom	1,357 sq.ft.
Unit 6	3 Bedroom	1,133 sq.ft.
Unit 7	3 Bedroom	1,133 sq.ft.
Unit 8	3 Bedroom	1,133 sq.ft.

**UNITED METHODIST CHILDREN'S SERVICES**