



 PUBLIC STREET
 PROPOSED TO
 BE VACATED

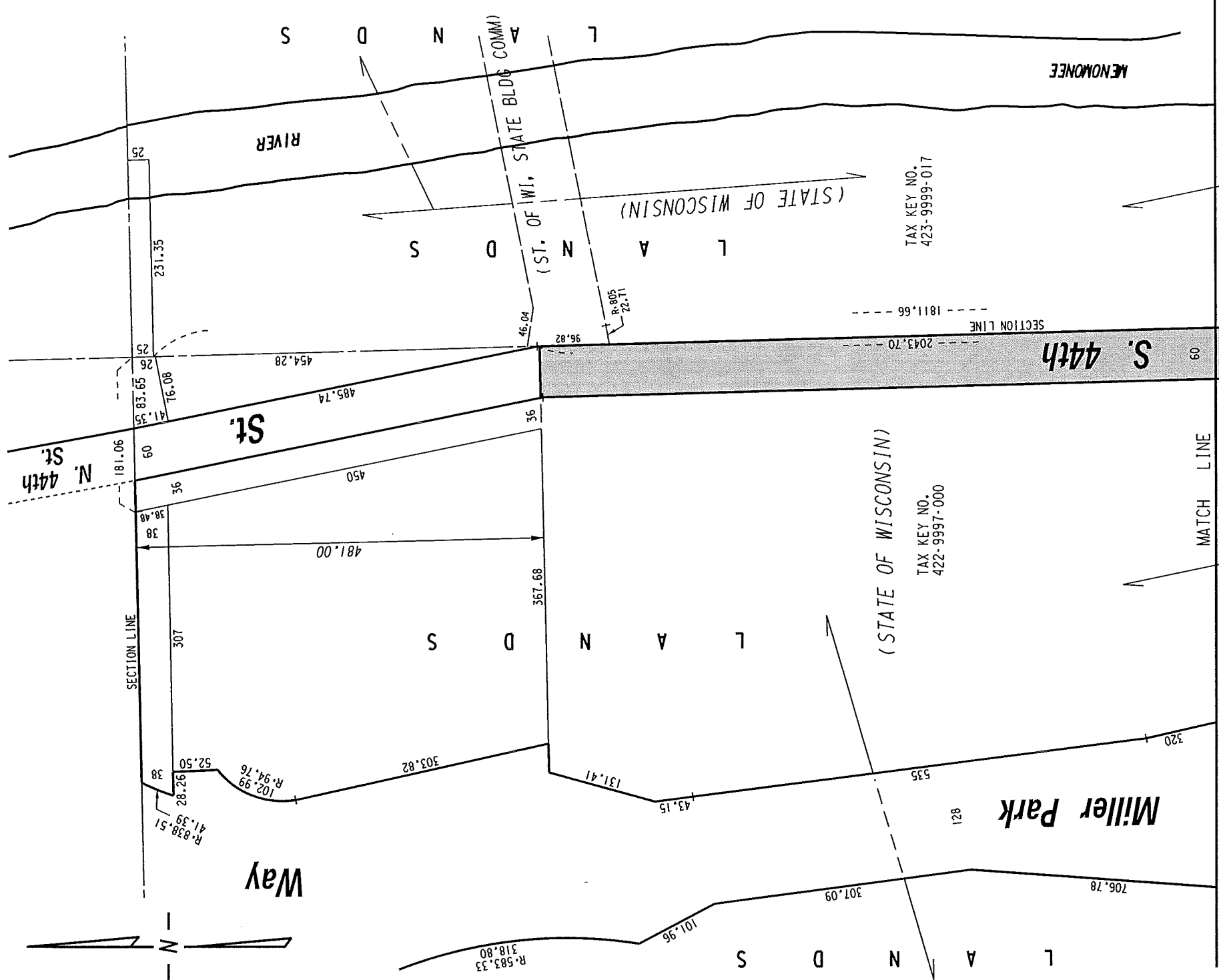
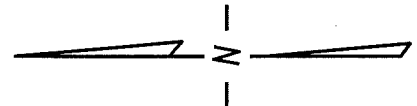
EXHIBIT "A"
FILE NO. 141870

INFRASTRUCTURE SERVICES DIVISION
 MILWAUKEE, WISCONSIN

ASSIGNED TO: W.E. FUCHS
 DRAWN BY: W.E.F.
 PROJECT/GRANT NO.: WK52337371
 APPROVED BY:

CH'K'D. BY: W.E. FUCHS
 DATE: MAY 15, 2015
 SCALE: 1" = 450'


 CENTRAL DRAFTING & RECORDS MANAGER
 for CITY ENGINEER



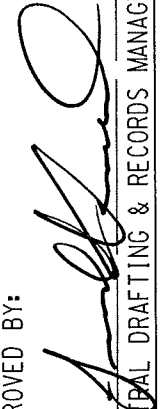
N.E. 1/4 SEC. 35, T.7N., R.21E. **422**

423 N.W. 1/4 SEC. 36, T.7N., R.21E.

 PUBLIC STREET PROPOSED TO BE VACATED

EXHIBIT "A"
FILE NO. 141870
INFRASTRUCTURE SERVICES DIVISION

MILWAUKEE, WISCONSIN
 ASSIGNED TO: W.E. FUCHS
 CH'K'D. BY: W.E. FUCHS
 DRAWN BY: W.E.F.
 DATE: MAY 15, 2015
 PROJECT/GRANT NO.: WK52337371
 APPROVED BY: SCALE: 1" = 150'

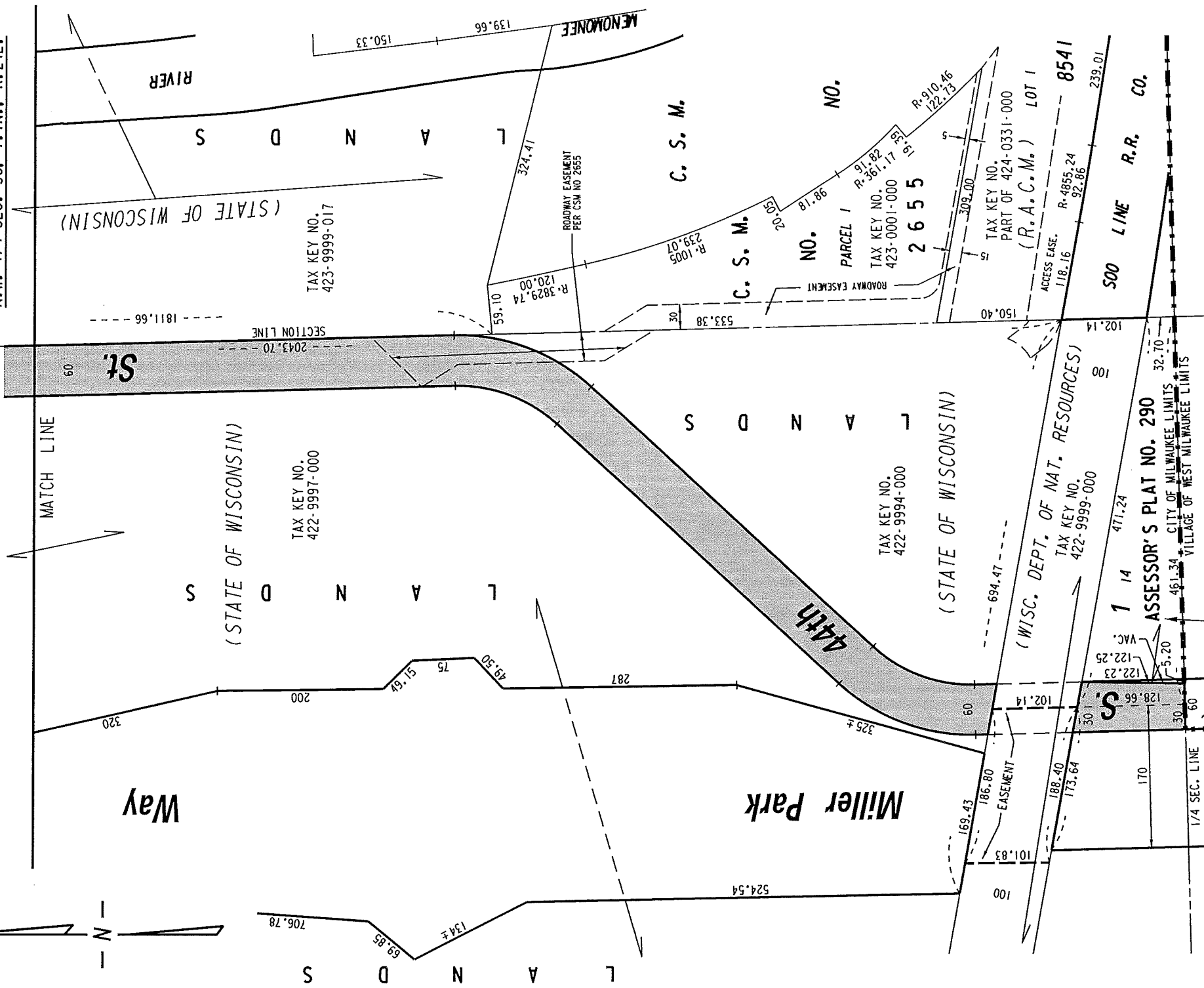
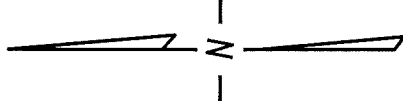

 CENTRAL DRAFTING & RECORDS MANAGER
 for CITY ENGINEER

N.E. 1/4 SEC. 35, T.7N., R.21E.

422

423

N.W. 1/4 SEC. 36, T.7N., R.21E.



PUBLIC STREET
PROPOSED TO
BE VACATED

EXHIBIT "A"

FILE NO. 141870

INFRASTRUCTURE SERVICES DIVISION

MILWAUKEE, WISCONSIN

ASSIGNED TO: W.E. FUCHS

CH'K'D. BY: W.E. FUCHS

DRAWN BY: W.E.F.

DATE: MAY 15, 2015

PROJECT/GRANT NO.: WK52337371

SCALE: 1" = 150'

APPROVED BY:

(MAP 3 OF 3)

[Signature]

Marcia Connell
for CITY ENGINEER

CENTRAL DRAFTING & RECORDS-MANAGER