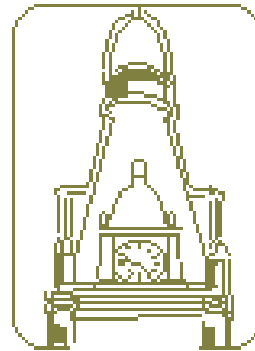


CHAPTER 370 AND BRONZEVILLE



**City
of
Milwaukee**

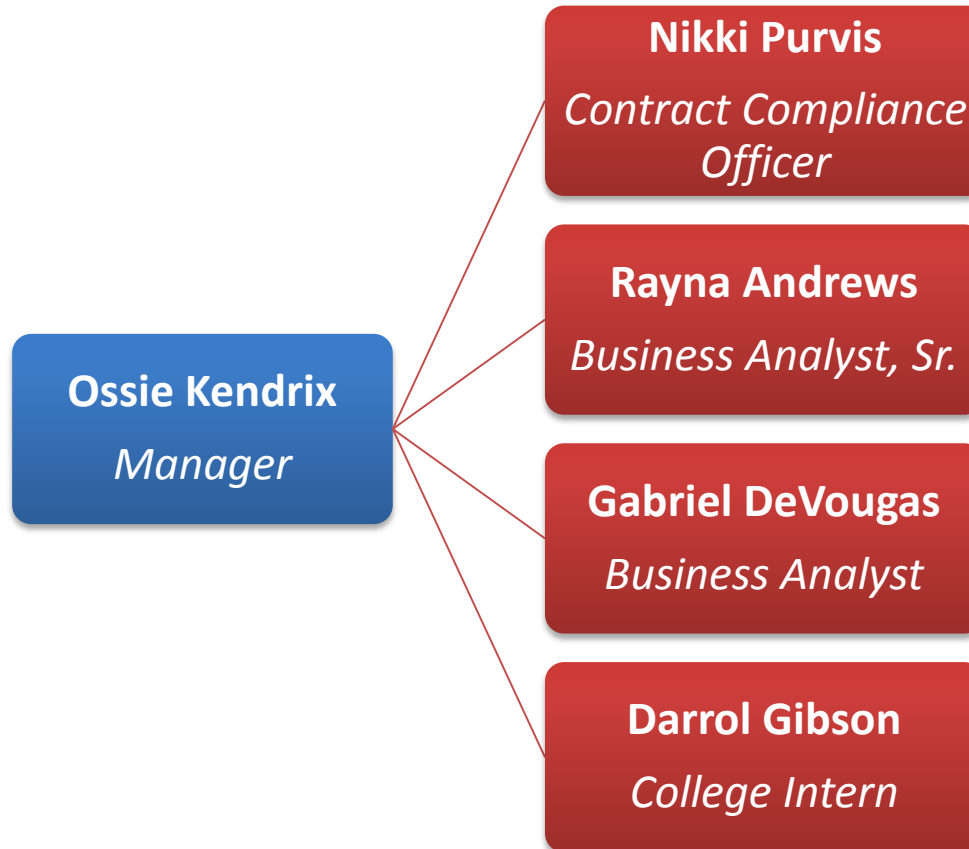
Presented by
**The Department of Administration
Business Operations Division
Office of Small Business Development**

OVERVIEW

1. WHO WE ARE
2. WHAT WE DO
3. WHY THE CHANGE
4. DISPARITY STUDY DEFINED
5. RESULTS
6. M/W/SBE PARTICIPATION REQUIREMENTS
7. TOOLS TO ASSIST THE BRONZEVILLE ADVISORY COMMITTEE

WHO WE ARE

Office of Small Business Development (OSBD) administers the city of Milwaukee's small business certification programming.



WHAT WE DO (OVERVIEW)

Types of Certifications

1. Minority Business Enterprise (MBE)
2. Woman Business Enterprise (WBE)
3. Small Business Enterprise (SBE)

Steps to Certification

1. Application
2. Review
3. Determination
4. Certification

Financial Assistance

1. Revolving Loan Program
2. Performance Bond Program

PROGRAMMATIC CHANGE TIMELINE (WHY)

2007

EBE Program
Evaluation
Report

2010

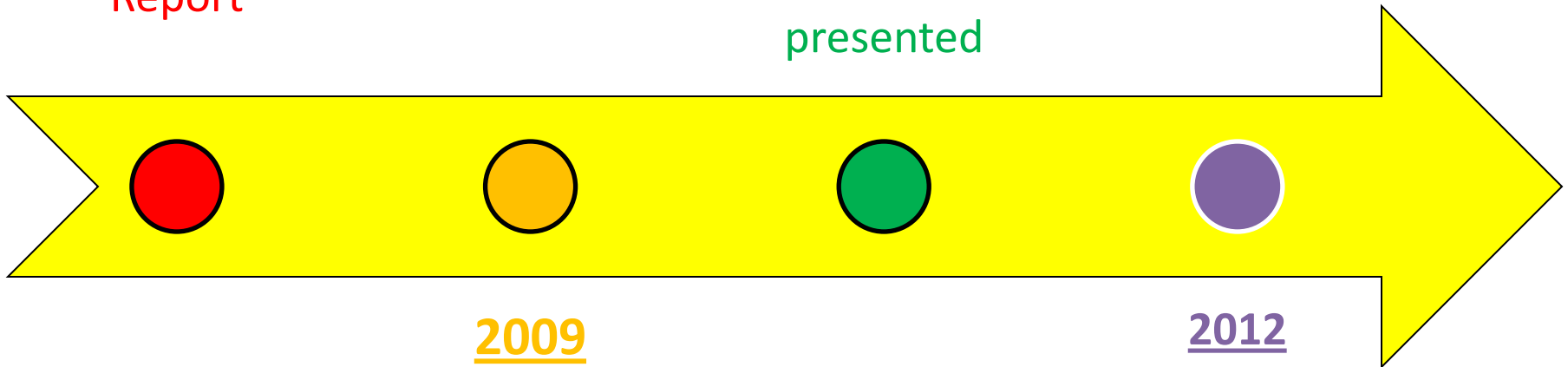
Disparity
Study
concluded
and
presented

2009

D. Wilson
Consulting
Team
contracted

2012

MBE, WBE,
and SBE
Program
execution



DISPARITY STUDY DEFINED

- A disparity study provides an agency with the evidence, in accordance with current case law, to determine whether or not, and to what extent, race and gender conscious programs are appropriate.
- A disparity study must be conducted in order for a governmental entity to establish valid race and gender conscious contracting requirements.
- Two Important Factors:
 - “Compelling Governmental Interest”, as evidenced by ongoing effects of past or present discrimination against minority-owned businesses.
 - Second, race-conscious programs must be "narrowly tailored" to remedy the effects of such discrimination.

RESULTS

- The study found that there was evidence supporting the use of race-conscious requirements for:
 - African American
 - Asian American
 - Hispanic American
 - Native American firms
- The study also found that there was evidence supporting the use of gender-conscious requirements for:
 - Non-minority Woman owned firms

M/W/SBE PROGRAM ANNUAL REQUIREMENTS

	Construction	Goods & Services	Professional Services
MBE			
African American Firms	5.57%		
Asian American Firms	.07%		
Hispanic Firms		3.23%	
Native American Firms		.17%	
WBE	7.31%	17.09%	
SBE	12.05%	4.51%	18%
TOTAL	25%	25%	18%

TOOLS TO ASSIST...

- **Consider M/W/SBE participation on ALL projects**
- **Consider Residents Preference Program (RPP) participation on ALL projects**
- **Promote partnerships that engage small business firms**
- **Encourage small business development**
- **Help us to ensure that small businesses GET IN THE GAME!**
 - **MWSBE Certification**
 - **Actively BID on City opportunities**
 - **Revolving Loan Program**
 - **Performance Bond Program**

ADDITIONAL QUESTIONS?

**THANKS FOR
THE OPPORTUNITY!**

**FOR ADDITIONAL INFORMATION AFTER THIS
MEETING, PLEASE CALL (414) 286-5553.**