



LIVING WITH HISTORY

# Certificate of Appropriateness

Milwaukee Historic Preservation Commission/200 E. Wells Street/Milwaukee, WI 53202/phone 414-286-5712/fax 414-286-3004

**Property** 3002 W. STATE ST.  
**Description of work** INSTALL DUCTLESS SPLIT SYSTEM. LINE SET TO RUN DOWN BACK OF HOUSE.  
**Date issued** 10/9/2014 PTS ID 98241 COA, CENTRAL AIR

In accordance with the provisions of Section 320-21 (11) and (12) of the Milwaukee Code of Ordinances, the Milwaukee Historic Preservation Commission has issued a certificate of appropriateness for the work listed above. The work was found to be consistent with preservation guidelines. The following conditions apply to this certificate of appropriateness:

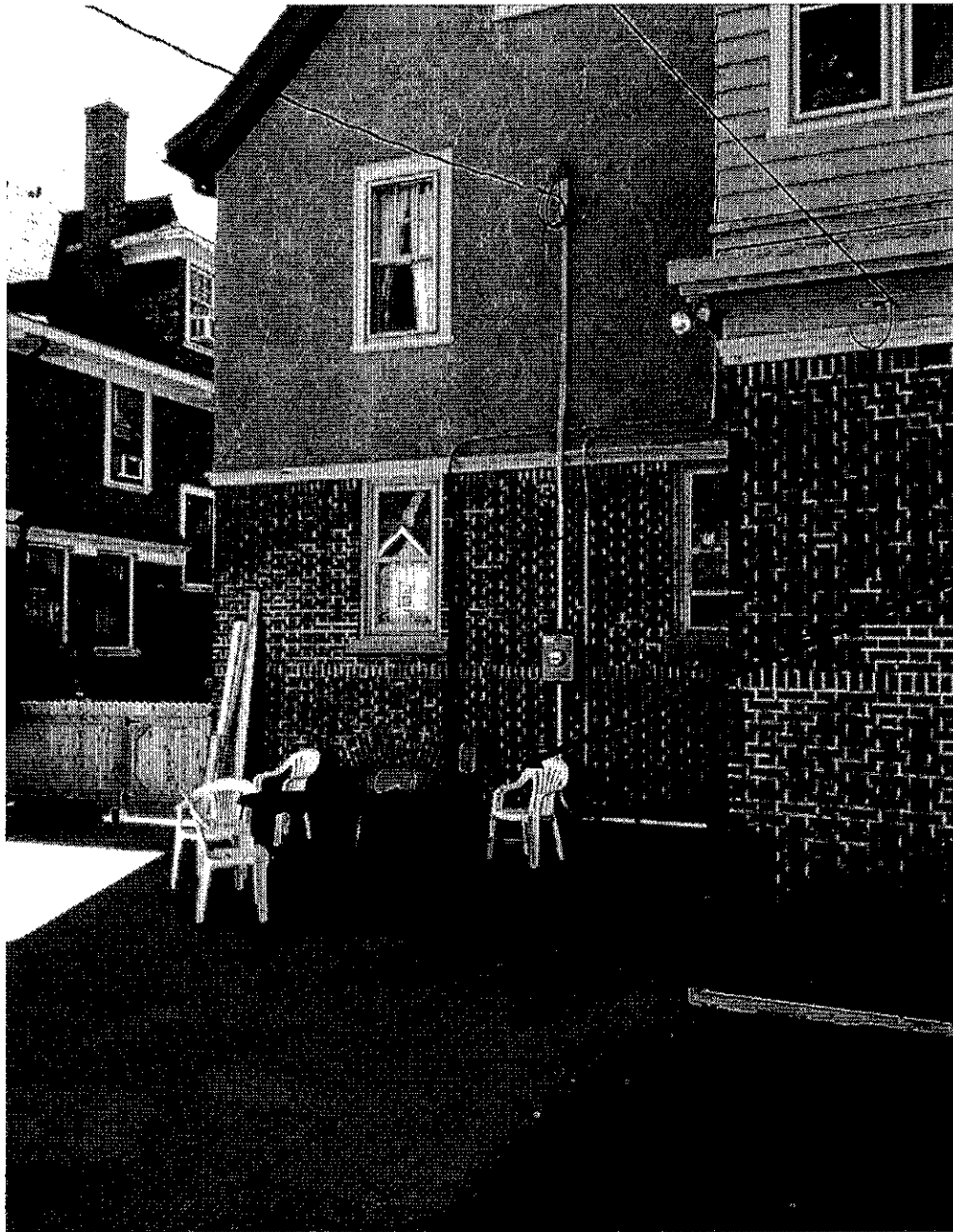
Install outdoor compressor unit on grade, in back of house and next to foundation. Unit must not be seen from the street. Install any new holes in brick through mortar joints rather than through the faces of the brick.

All work must be done in a craftsman-like manner, and must be completed within one year of the date this certificate was issued. Staff must approve any changes or additions to this certificate before work begins. Work that is not completed in accordance with this certificate may be subject to correction orders or citations. If you require technical assistance, please contact Paul Jakubovich of the Historic Preservation staff as follows: Phone: (414) 286-5712 Fax: (414) 286-3004 E-mail: [pjakub@milwaukee.gov](mailto:pjakub@milwaukee.gov).

If permits are required, you are responsible for obtaining them from the Milwaukee Development Center. If you have questions about permit requirements, please consult the Development Center's web site, [www.milwaukee.gov/build](http://www.milwaukee.gov/build), or call (414) 286-8210.

Paul Jakubovich  
City of Milwaukee Historic Preservation

Copies to: Development Center, Ald. Robert Bauman, Contractor Donovan Jorgenson, Inspector David Rhodes (286-5982), Inspector Heidi Weed



**Install new split system a/c unit on grade, next to foundation in back of house. Run line set up to second floor. Ideally line set should be on an inside corner to minimize its appearance.**