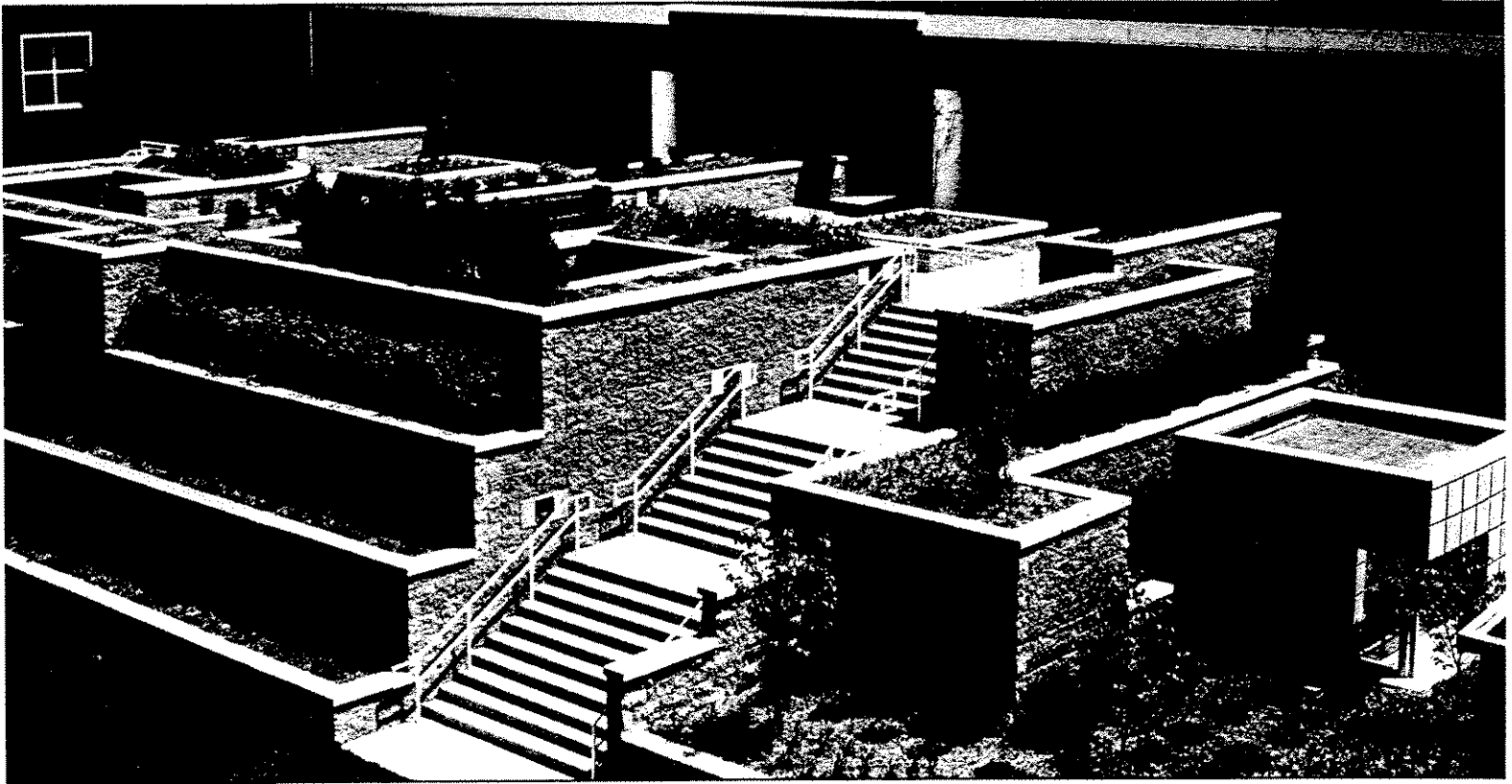


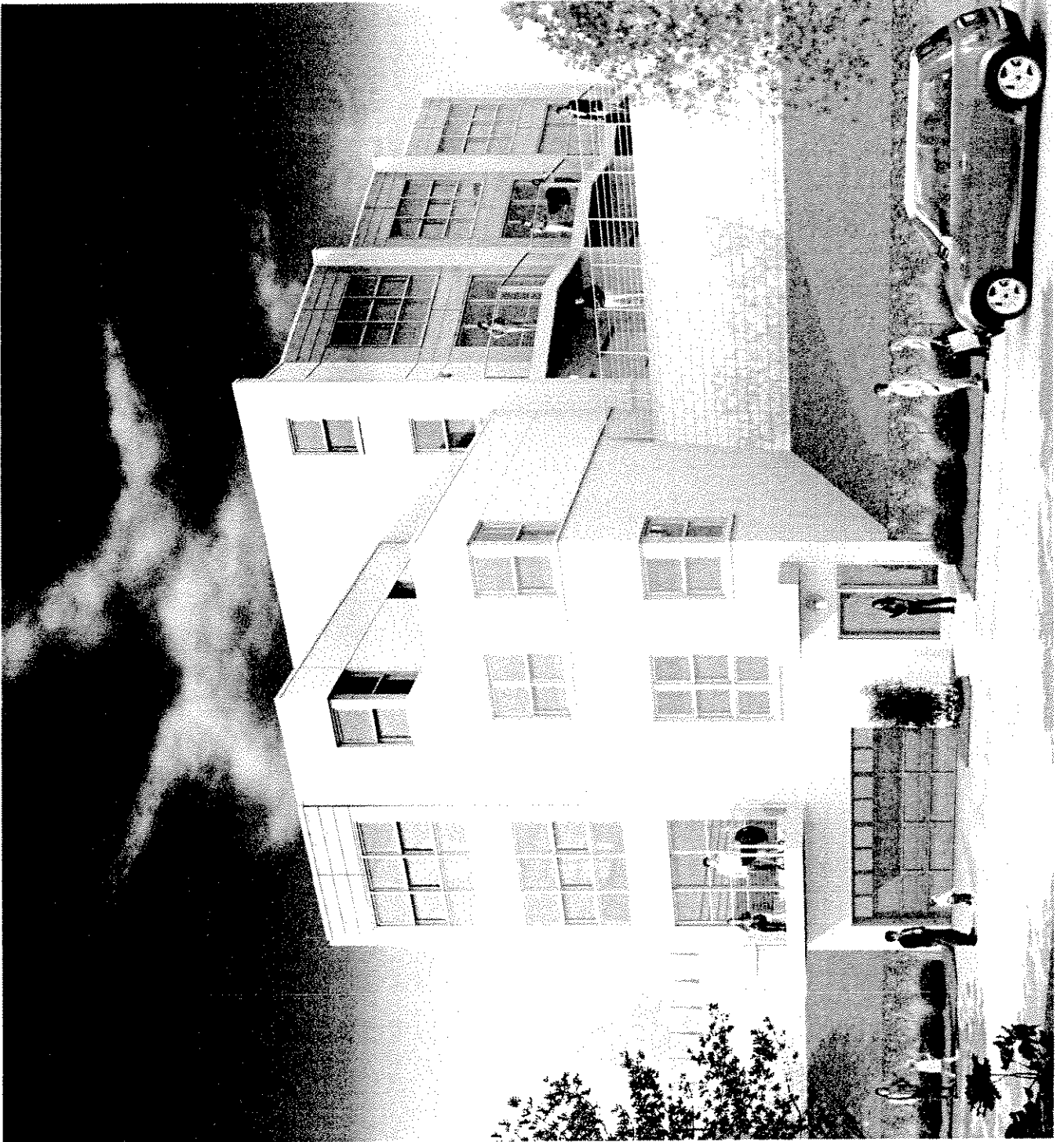


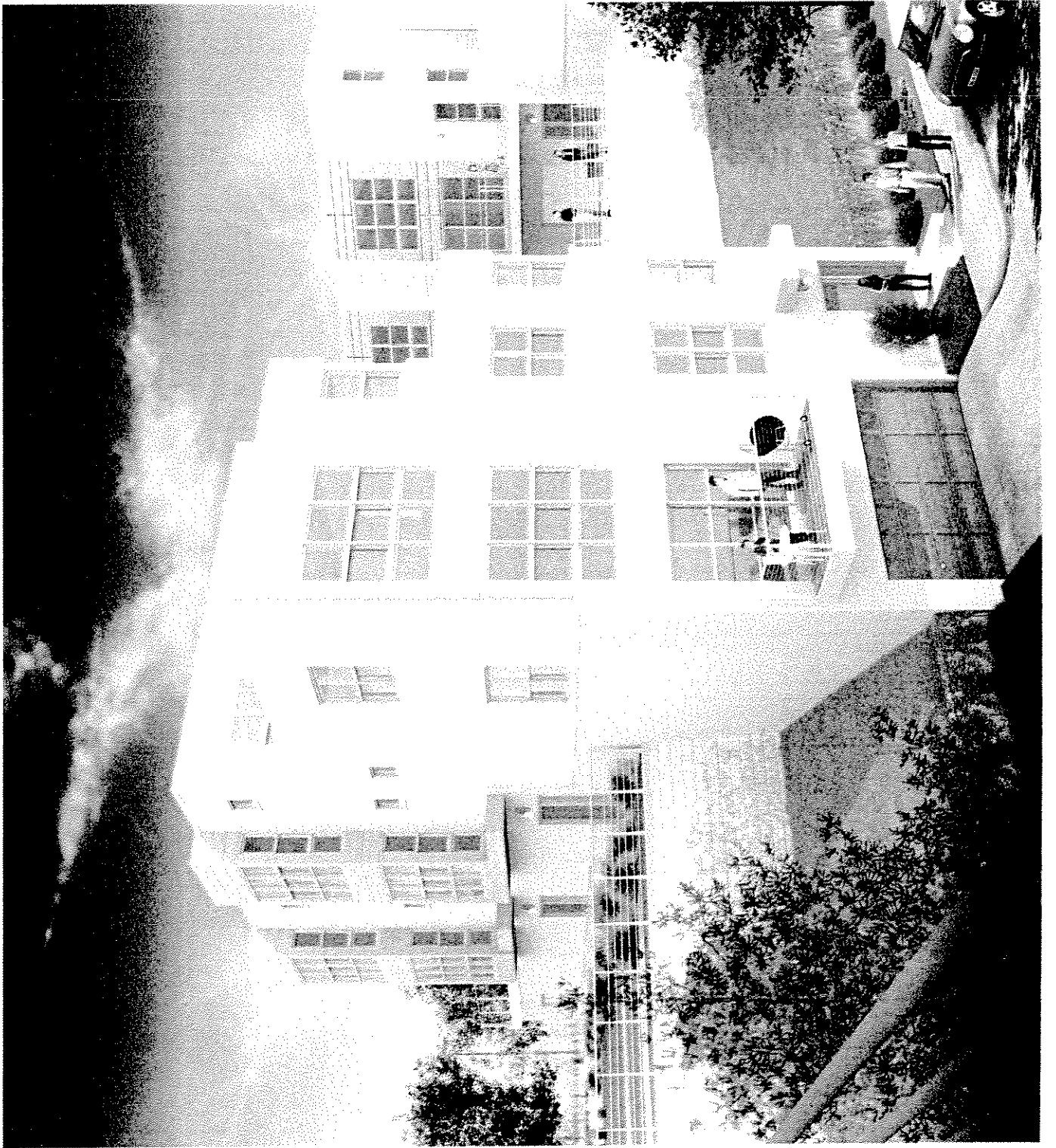
Retaining Excellence

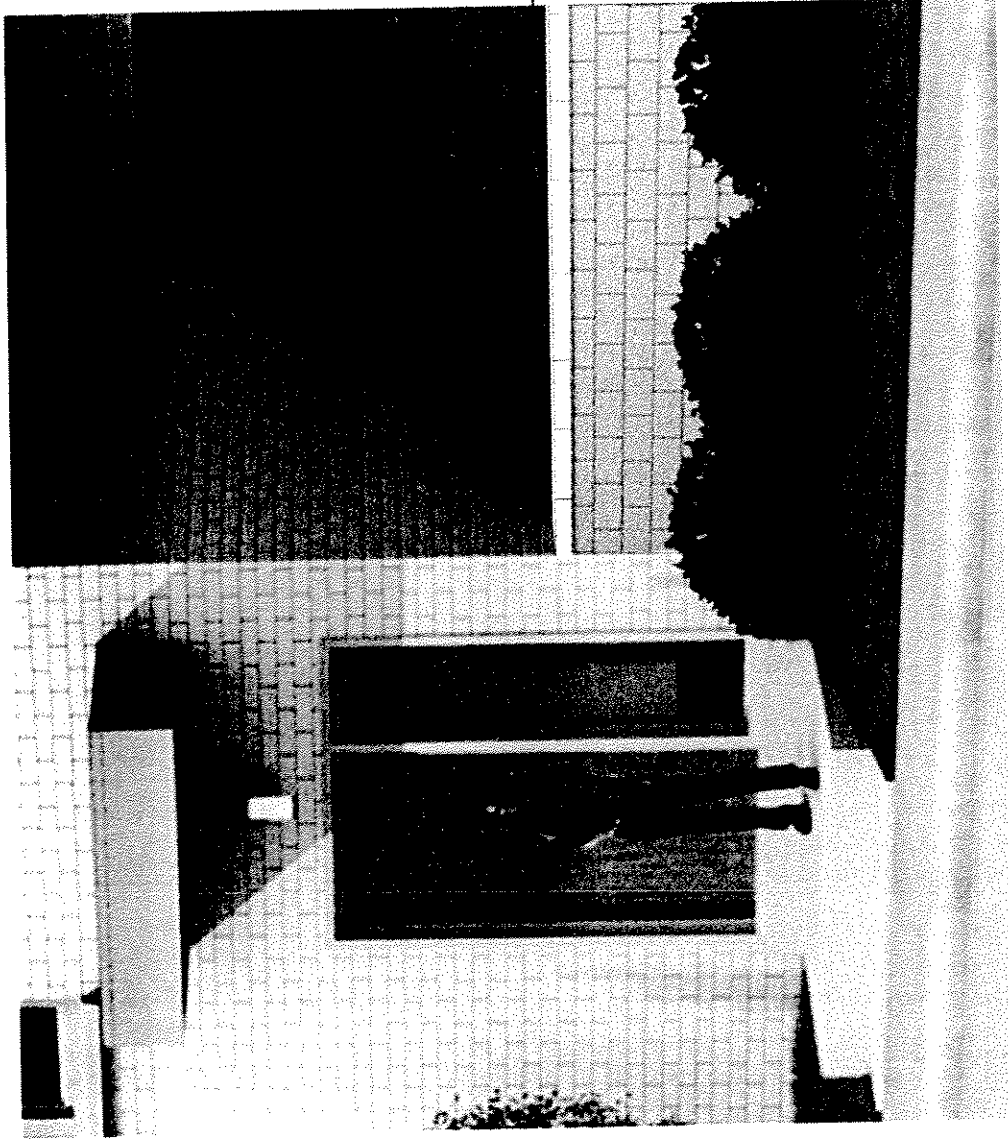
CLASSIC STRAIGHT SPLIT



KEYSTONE Classic Straight Split is an attractive option for the face texture on any of the Keystone family of products. This distinctive cut stone appearance will enhance any landscape project and work as a compliment to the architectural components on the site. As either a gravity wall or reinforced structure, the Classic Straight Split products provide structurally sound, aesthetically appealing and economically beneficial solutions to your site retaining wall needs. Like all Keystone products, the Classic Straight Split units are made of high-strength, low absorption concrete for long lasting results. All structural units are interconnected using high strength fiberglass pins for strong shear connection, ease of alignment and positive mechanical connection with soil reinforcement materials.





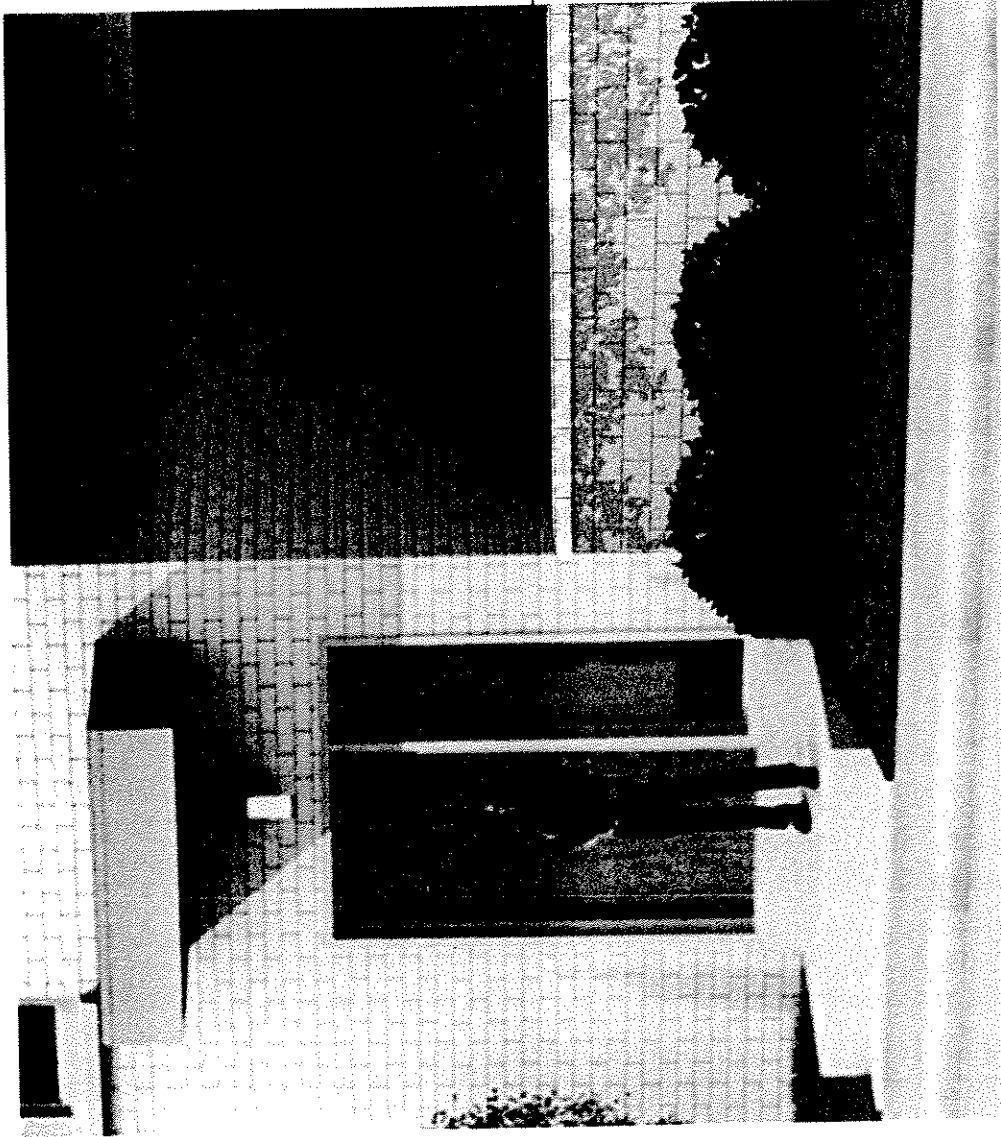


3" -5" LANNON STONE 12" LONG

SCULPTED FULL UNIT BLOCK
STANDARD GREY

RiverCrest Condominiums

Mandel Group
ARQUITECTURA, INC.
SEP. 10TH, 04



3" -5" LANNON STONE 12" LONG

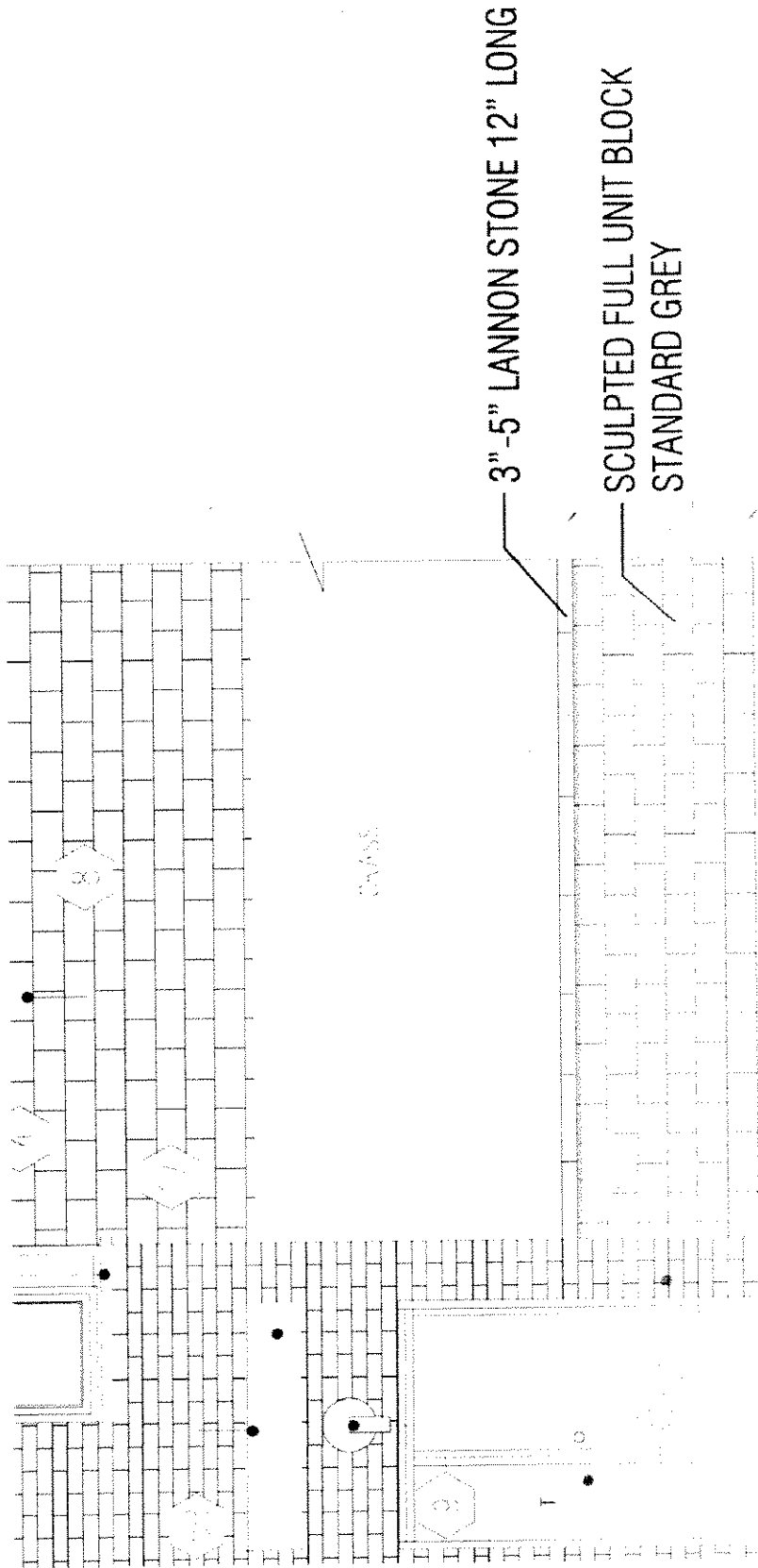
SCULPTED FULL UNIT BLOCK
STANDARD GREY

RiverCrest Condominiums

Mandel Group

ARCHITECTURA, INC.

SEP. 10TH, 04



RiverCrest Condominiums
 Mandel Group
 ARCHITECTURA, INC.
 SEP. 10TH, 04

4 UNIT BUILDING # 1

NOV 13, 2008
4 UNIT

SHEET # DPD-7

A-3.0

PROJECT RIVERCREST

OWNER
RIVERSIDE COMMUNITY LLC
111 E. WASHINGTON AVE. SUITE 100
MILWAUKEE, WI 53202

ARCHITECT
RIVERCREST ARCHITECT
111 E. WASHINGTON AVE. SUITE 100
MILWAUKEE, WI 53202

DESIGN TEAM
RIVERCREST ARCHITECT
111 E. WASHINGTON AVE. SUITE 100
MILWAUKEE, WI 53202

PROJECT ARCHITECT
RIVERCREST ARCHITECT
111 E. WASHINGTON AVE. SUITE 100
MILWAUKEE, WI 53202

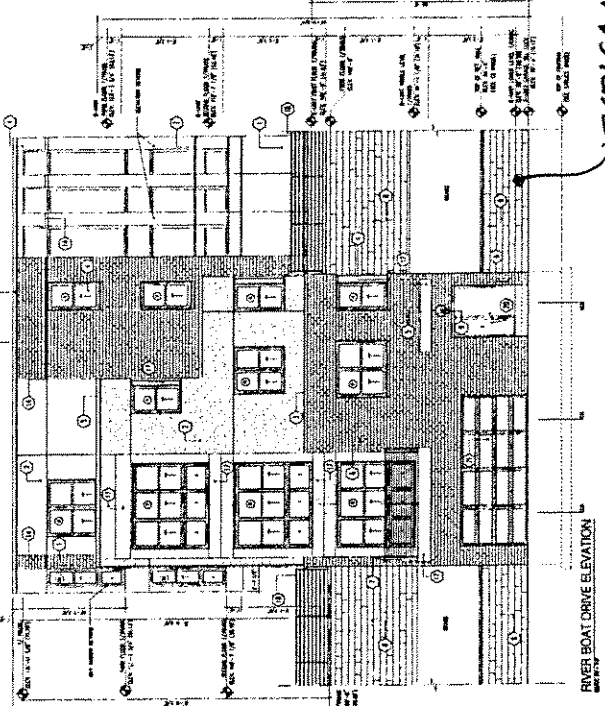
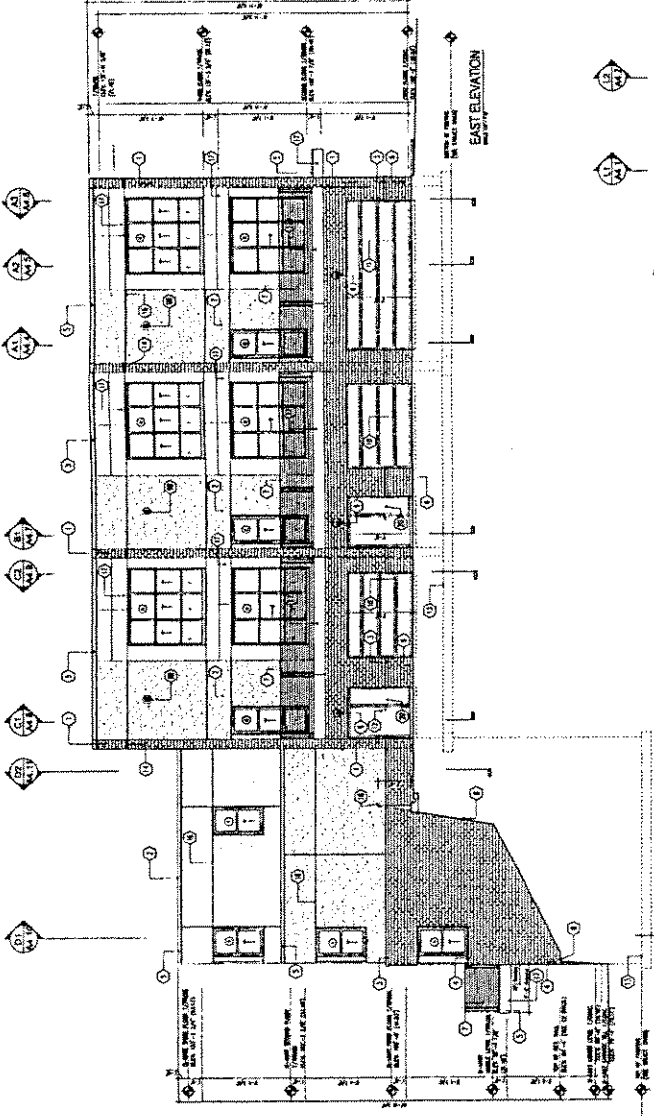
DESIGNED BY
RIVERCREST ARCHITECT
111 E. WASHINGTON AVE. SUITE 100
MILWAUKEE, WI 53202

CHECKED BY
RIVERCREST ARCHITECT
111 E. WASHINGTON AVE. SUITE 100
MILWAUKEE, WI 53202

ARCHITECTURA

TYPICAL RETAINING WALL CONDITION.

PREVIOUSLY APPROVED



- MATERIAL KEY-ELEVATIONS**
- 1. STONE
 - 2. BRICK
 - 3. CONCRETE
 - 4. METAL
 - 5. GLASS
 - 6. WOOD
 - 7. TERRAZZO
 - 8. GRANITE
 - 9. MARBLE
 - 10. SLATE
 - 11. CERAMIC TILE
 - 12. POLYURETHANE
 - 13. POLYURETHANE
 - 14. POLYURETHANE
 - 15. POLYURETHANE
 - 16. POLYURETHANE
 - 17. POLYURETHANE
 - 18. POLYURETHANE
 - 19. POLYURETHANE
 - 20. POLYURETHANE
 - 21. POLYURETHANE
 - 22. POLYURETHANE
 - 23. POLYURETHANE
 - 24. POLYURETHANE
 - 25. POLYURETHANE
 - 26. POLYURETHANE
 - 27. POLYURETHANE
 - 28. POLYURETHANE
 - 29. POLYURETHANE
 - 30. POLYURETHANE
 - 31. POLYURETHANE
 - 32. POLYURETHANE
 - 33. POLYURETHANE
 - 34. POLYURETHANE
 - 35. POLYURETHANE
 - 36. POLYURETHANE
 - 37. POLYURETHANE
 - 38. POLYURETHANE
 - 39. POLYURETHANE
 - 40. POLYURETHANE
 - 41. POLYURETHANE
 - 42. POLYURETHANE
 - 43. POLYURETHANE
 - 44. POLYURETHANE
 - 45. POLYURETHANE
 - 46. POLYURETHANE
 - 47. POLYURETHANE
 - 48. POLYURETHANE
 - 49. POLYURETHANE
 - 50. POLYURETHANE

