



LIVING WITH HISTORY

Certificate of Appropriateness

Milwaukee Historic Preservation Commission/200 E. Wells Street/Milwaukee, WI 53202/phone 414-286-5712/fax 414-286-3004

Property 1025 N. OLD WORLD THIRD ST.
Description of work Remove one wall sign; remove sign bracket. Relocate and re-face existing projecting sign to northeast corner of building. Repair underlying masonry per conditions below.
Date issued 2/11/2020 PTS ID 114913 COA: sign alterations

In accordance with the provisions of Section 320-21 (11) and (12) of the Milwaukee Code of Ordinances, the Milwaukee Historic Preservation Commission has issued a certificate of appropriateness for the work listed above. The work was found to be consistent with preservation guidelines. The following conditions apply to this certificate of appropriateness:

- 1. Mounting posts shall be drilled into mortar joints only and not into the face of any brick or stone. Any surface-mounted electrical conduit shall be painted to match surrounding building material. Remove any surface-mounted conduit that is no longer needed.**
2. New mortar must match the original mortar in terms of color, texture, grain size, joint width, and joint finish/profile. The compressive strength of the repointing mortar shall be equal or less than the compressive strength of the original mortar and surrounding brick or stone. The replacement mortar shall contain approximately the same ingredient proportions of the original mortar. Mortar that is too hard is subject to premature failure and could damage the masonry. See the city's books *As Good As New* or *Good for Business*, Masonry Chapters, for more information. In most cases, this means a lime mortar with natural hydraulic cement rather than Portland cement. No joint of a width less than 3/8" may be cleaned of damaged/decomposed mortar with power disc grinders. No over-cutting of the joints is permitted. Remove decomposed mortar back into the wall 2.5 times the height of the joint before repointing.
New brick must match as closely as possible the color texture, size, and finish of the original brick.
A sample panel of brick and mortar must be reviewed and approved by HPC staff prior to general installation of the material.
UNDER NO CIRCUMSTANCES SHALL UNPAINTED MASONRY BE PAINTED, BE GIVEN A WATERPROOFING TREATMENT, OR CLEANED BY ABRASIVE MEANS.

All work must be done in a craftsman-like manner, and must be completed within one year of the date this certificate was issued. Staff must approve any changes or additions to this certificate before work begins. Work that is not completed in accordance with this certificate may be subject to

correction orders or citations. If you require technical assistance, please contact the Historic Preservation staff as follows: Phone: (414) 286-5712 E-mail: hpc@milwaukee.gov.

If permits are required, you are responsible for obtaining them from the Milwaukee Development Center. If you have questions about permit requirements, please consult the Development Center's web site, www.milwaukee.gov/build, or call (414) 286-8210.



City of Milwaukee Historic Preservation Staff

Copies to: Development Center, Ald. Robert Bauman, Contractor



Sign to be removed.



This sign to be refaced and relocated to NE corner.

Relocate and Re-Face of Existing Projecting Sign

(1) Req'd - (3) Faces

1/2" = 1' - 0" Scale

Relocate Existing Sign to Northmost Column closest to Alley at Corner of Bldg.
Sign to Remain on East Elevation. 120V Primary Electrical Connection to Existing Power and Hook-up by Locally Licensed Electrician - If power within 3ft of Sign, Sign Effectz may make the connection.

Sign to be anchored to building similar to previous location as same Dist from Grade, working within allowances at Exterior Masonry Wall.

Fabricate and Install (3) Sign Faces to Replace Existing Faces on 3 Sides of Sign.

Face 1 & 2: 120"h x 42"w x .125" thk Routed Alum

Paint: MAP Satin Black

Acrylic 1: .708" thk Clear Push-Thru Acrylic (.5" projects from face)

Acrylic 2: .118" thk #7328 White Acrylic Backer

Face 3: 120"h x 10.75"w x .125" thk Routed Alum

Paint: MAP Satin Black

Acrylic 1: .708" thk Clear Push-Thru Acrylic (.5" projects from face)

Acrylic 2: .118" thk #7328 White Acrylic Backer

Vinyl 1: 1st surface applied Black Vinyl (opaque)

Vinyl 2: 1st surface applied Orange Vinyl
(translucent - spec to be approved by customer)

Attachment: Mechanically Fastened w/ Corrosion-Free Fasteners

Illumination: Existing White LED Illumination

Power: Existing Power Supplies

Color Schedule:

■ MAP Satin Black Painted Finish (same as existing sign)
shown lighter to see other details

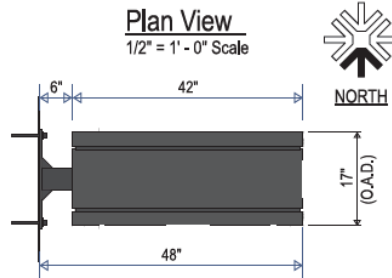
□ #7328 White Acrylic

■ 3M 7725-22 'Matte Black' Vinyl Film (opaque)

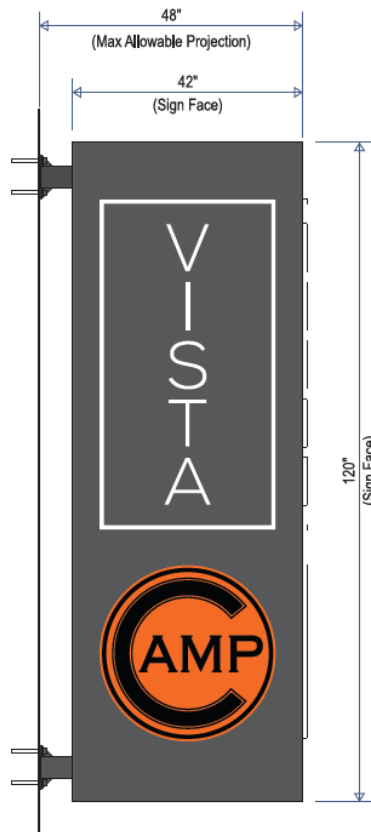
■ 3M 3630-84 'Tangerine' Vinyl Film (translucent) TBD

Plan View

1/2" = 1' - 0" Scale



New sign design



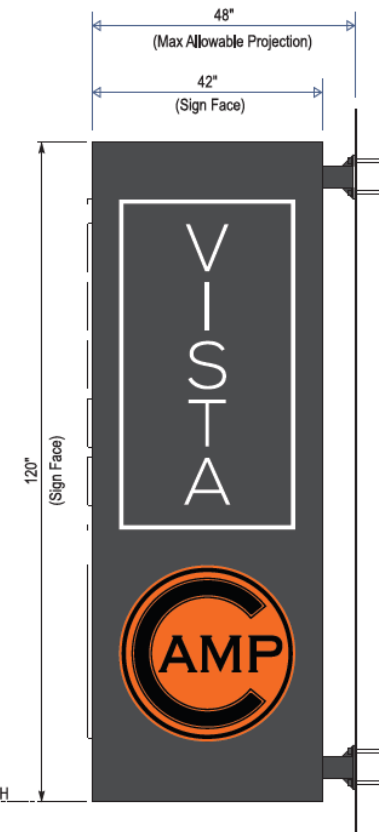
S. Elevation

1/2" = 1' - 0" Scale



E. Elevation

1/2" = 1' - 0" Scale



N. Elevation

1/2" = 1' - 0" Scale

EXISTING LOCATION - E. ELEV - NTS



EXISTING SIGN BRANDED AS TRIO - SAME STRUCTURE AS EVOLUTION

PROPOSED LOCATION - E. ELEV - NTS



EXISTING SIGN BRACKET ON WALL FOR REMOVAL

EXISTING AND PROPOSED SIGN LOCATIONS - EAST ELEVATION - NTS



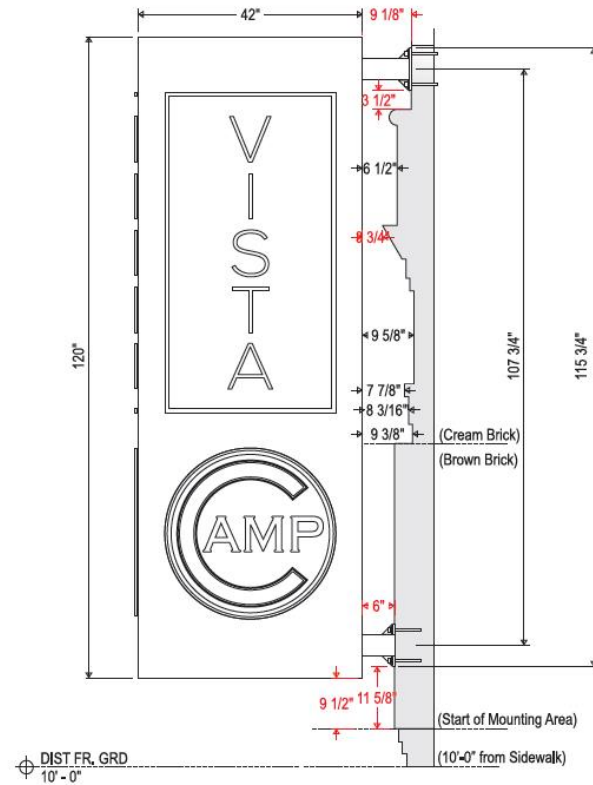
PREVIOUS LOCATION

PROPOSED LOCATION

CIRCA 2015

Install Locaiton - N. Elev View

1/2" = 1' - 0" Scale



EXISTING ELECTRICAL PRIMARY

SIGN FOR REMOVAL

SIGN BRACKET FOR REMOVAL

01/14/2019
16:12