



INDEX

A1 - 1	INDEX
A1 - 2	OVERALL SITE PLAN
A1 - 3	ENLARGED SITE PLAN - 4TH & JUNEAU
A1 - 4	ELEVATION
A1 - 5	RENDERING
A1 - 6	RENDERING

FISERV FORUM MILWAUKEE BUCKS

MINOR MODIFICATION
RE: 181486

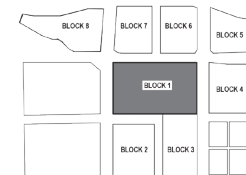


FISERV FORUM
1111 N. 4TH STREET
MILWAUKEE WI

MINOR MODIFICATION:
FREESTANDING SIGNAGE

REVISIONS

NO.	DATE	DESCRIPTION



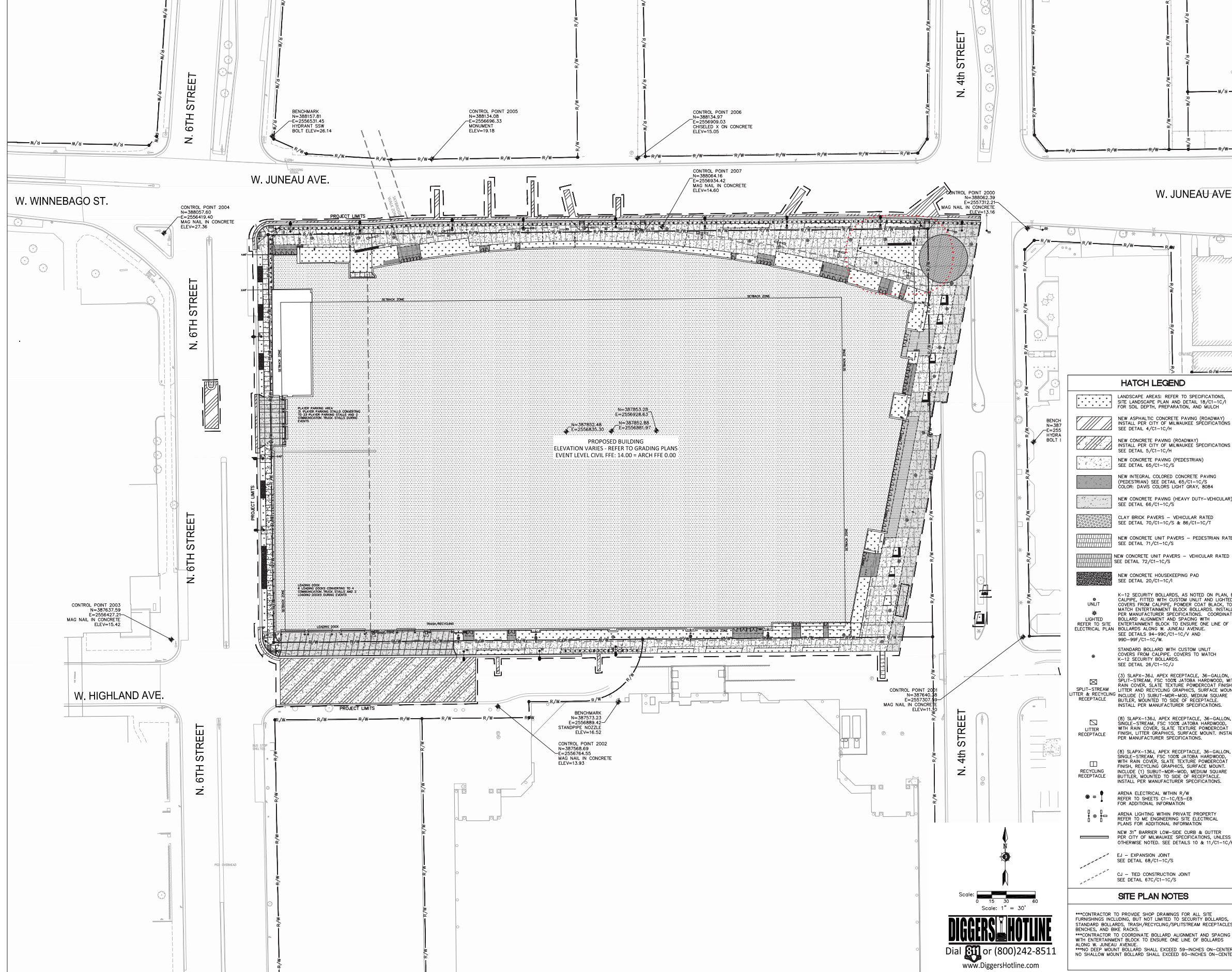
KEY PLAN

PROJECT NUMBER: 15.4017
ISSUE DATE: 02.11.2019

INDEX



SHEET
A1 - 1



HATCH LEGEND

- LANDSCAPE AREAS: REFER TO SPECIFICATIONS, SITE LANDSCAPE PLAN AND DETAIL 18/C1-1C/1 FOR SOIL DEPTH, PREPARATION, AND MULCH
- NEW ASPHALTIC CONCRETE PAVING (ROADWAY) INSTALL PER CITY OF MILWAUKEE SPECIFICATIONS SEE DETAIL 4/C1-1C/H
- NEW CONCRETE PAVING (ROADWAY) INSTALL PER CITY OF MILWAUKEE SPECIFICATIONS SEE DETAIL 5/C1-1C/H
- NEW CONCRETE PAVING (PEDESTRIAN) SEE DETAIL 65/C1-1C/S
- NEW INTEGRAL COLORED CONCRETE PAVING (PEDESTRIAN) SEE DETAIL 65/C1-1C/S COLOR: DAVIS COLORS LIGHT GRAY, 8084
- NEW CONCRETE PAVING (HEAVY DUTY-VEHICULAR) SEE DETAIL 66/C1-1C/S
- CLAY BRICK PAVERS - VEHICULAR RATED SEE DETAIL 70/C1-1C/S & 86/C1-1C/T
- NEW CONCRETE UNIT PAVERS - PEDESTRIAN RATED SEE DETAIL 71/C1-1C/S
- NEW CONCRETE UNIT PAVERS - VEHICULAR RATED SEE DETAIL 72/C1-1C/S
- NEW CONCRETE HOUSEKEEPING PAD SEE DETAIL 20/C1-1C/A
- K-12 SECURITY BOLLARDS, AS NOTED ON PLAN, BY CALPIPE, FITTED WITH CUSTOM UNIT AND LIGHTED COVERS FROM CALPIPE, POWER COAT BLACK, TO MATCH ENTERTAINMENT BLOCK BOLLARDS, INSTALL PER MANUFACTURER SPECIFICATIONS. COORDINATE BOLLARD ALIGNMENT AND SPACING WITH ENTERTAINMENT BLOCK TO ENSURE ONE LINE OF BOLLARDS ALONG W. JUNEAU AVENUE. SEE DETAILS 94-99/C1-1C/V AND 99D-99F/C1-1C/W
- STANDARD BOLLARD WITH CUSTOM UNIT COVERS FROM CALPIPE, COVERS TO MATCH K-12 SECURITY BOLLARDS. SEE DETAIL 26/C1-1C/J
- (3) SLAPX-36J APEX RECEPTACLE, 36-GALLON, SPLIT-STREAM, FSC 100% JATOPA HARDWOOD, WITH RAIN COVER, SLATE TEXTURE POWDERCOAT FINISH, LITTER AND RECYCLING GRAPHICS, SURFACE MOUNT. INCLUDE (1) SUBUT-MOR-MOD, MEDIUM SQUARE BUTTLER, MOUNTED TO SIDE OF RECEPTACLE. INSTALL PER MANUFACTURER SPECIFICATIONS.
- (6) SLAPX-136J APEX RECEPTACLE, 36-GALLON, SINGLE-STREAM, FSC 100% JATOPA HARDWOOD, WITH RAIN COVER, SLATE TEXTURE POWDERCOAT FINISH, LITTER GRAPHICS, SURFACE MOUNT. INSTALL PER MANUFACTURER SPECIFICATIONS.
- (6) SLAPX-136J APEX RECEPTACLE, 36-GALLON, SINGLE-STREAM, FSC 100% JATOPA HARDWOOD, WITH RAIN COVER, SLATE TEXTURE POWDERCOAT FINISH, RECYCLING GRAPHICS, SURFACE MOUNT. INCLUDE (1) SUBUT-MOR-MOD, MEDIUM SQUARE BUTTLER, MOUNTED TO SIDE OF RECEPTACLE. INSTALL PER MANUFACTURER SPECIFICATIONS.
- ARENA ELECTRICAL WITHIN R/W REFER TO SHEETS C1-1C/E5-E8 FOR ADDITIONAL INFORMATION
- ARENA LIGHTING WITHIN PRIVATE PROPERTY REFER TO ME ENGINEERING SITE ELECTRICAL PLANS FOR ADDITIONAL INFORMATION
- NEW 31" BARRIER LOW-SIDE CURB & GUTTER PER CITY OF MILWAUKEE SPECIFICATIONS, UNLESS OTHERWISE NOTED. SEE DETAILS 10 & 11/C1-1C/H
- EJ - EXPANSION JOINT SEE DETAIL 68/C1-1C/S
- CJ - TIED CONSTRUCTION JOINT SEE DETAIL 67C/C1-1C/S

SITE PLAN NOTES

***CONTRACTOR TO PROVIDE SHOP DRAWINGS FOR ALL SITE FURNISHINGS INCLUDING, BUT NOT LIMITED TO SECURITY BOLLARDS, STANDARD BOLLARDS, TRASH/RECYCLING/SPLITSTREAM RECEPTACLES, BENCHES, AND BIKE RACKS.

***CONTRACTOR TO COORDINATE BOLLARD ALIGNMENT AND SPACING WITH ENTERTAINMENT BLOCK TO ENSURE ONE LINE OF BOLLARDS ALONG W. JUNEAU AVENUE.

***NO DEEP MOUNT BOLLARD SHALL EXCEED 59-INCHES ON-CENTER, NO SHALLOW MOUNT BOLLARD SHALL EXCEED 60-INCHES ON-CENTER.

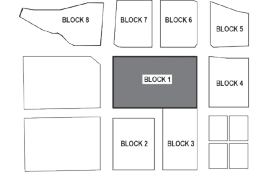


FISERV FORUM
1111 N. 4TH STREET
MILWAUKEE WI

MINOR MODIFICATION:
 FREESTANDING SIGNAGE

REVISIONS

NO.	DATE	DESCRIPTION



PROJECT NUMBER: 15.4017
 ISSUE DATE: 02.11.2019

OVERALL SITE PLAN



SHEET
 A1 - 2

LOW-SIDE CURB & GUTTER

(10)K-12 SHALLOW MOUNT SECURITY BOLLARDS
REFER TO HATCH LEGEND

NEW ACCESSIBLE RAMP WITH TRUNCATED DOME
DETECTABLE WARNING FIELD AND CROSSWALK
CONNECTION. REFER TO DETAIL 15/C1-1C/I

8.5 FOOT TRANSITION FROM 31"
MOUNTABLE LOW-SIDE CURB &
GUTTER TO 31" DEPRESSED
LOW-SIDE CURB & GUTTER

DE MOUNTABLE CURB

DETAIL 11/C1-1C/H

E PLANTER
REFER TO DETAIL
1-1C/I

ENLARGED SITE PLAN

RELOCATE/REMOVE
LIGHT POLE (X2)

RELOCATE/REMOVE
SITE BENCH

NEW FREESTANDING SIGN

(68)K-12 DEEP MOUNT SECURITY BOLLARDS
REFER TO HATCH LEGEND

APPROXIMATE LOCATION OF FLAGPOLE
REFER TO ARCHITECTURAL

CJ (TYP.)

EJ (TYP.)

VECTOR SEATING SYSTEM FROM
FORMS+SURFACES, 8 FOOT,
JATоба HARDWOOD SLATS, ONE
END LEG, ONE INTERMEDIATE LEG,
(4) SEAT BACKS; SLATE TEXTURE
POWDERCOAT, SURFACE MOUNT

VECTOR SEATING SYSTEM FROM
FORMS+SURFACES, 8 FOOT,
JATоба HARDWOOD SLATS, ONE
INTERMEDIATE LEG, NO SEAT
BACKS; SLATE TEXTURE
POWDERCOAT, SURFACE MOUNT

AT GRADE PLANTER
REFER TO DETAIL 18/C1-1C/I

SITE SIGNAGE
REFER TO SITE SIGNAGE PLAN

AT GRADE PLANTER

STONE
REFER
CJ (TY

AT GRAC
REFER T
BENCH 1
REFER T

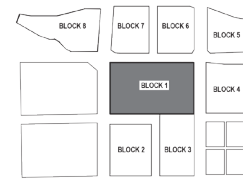


FISERV FORUM
1111 N. 4TH STREET
MILWAUKEE WI

MINOR MODIFICATION:
FREESTANDING SIGNAGE

REVISIONS

NO.	DATE	DESCRIPTION

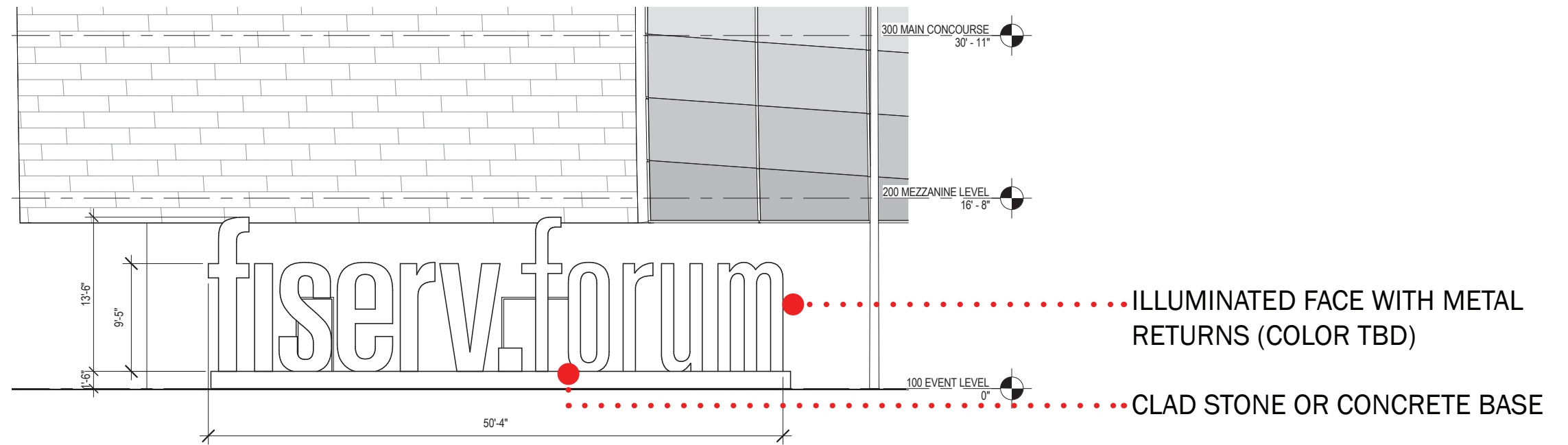


PROJECT NUMBER: 15.4017
ISSUE DATE: 02.11.2019

OVERALL SITE PLAN

POPULOUS HNTB eua

SHEET
A1 - 3

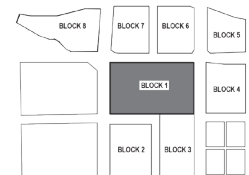


FISERV FORUM
1111 N. 4TH STREET
MILWAUKEE WI

MINOR MODIFICATION:
 FREESTANDING SIGNAGE

REVISIONS

NO.	DATE	DESCRIPTION



PROJECT NUMBER: 15.4017
 ISSUE DATE: 02.11.2019

ELEVATION



SHEET
 A1 - 4



fiserv forum

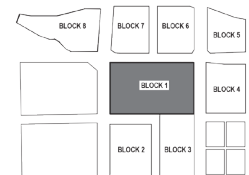


FISERV FORUM
1111 N. 4TH STREET
MILWAUKEE WI

MINOR MODIFICATION:
 FREESTANDING SIGNAGE

REVISIONS

NO.	DATE	DESCRIPTION



PROJECT NUMBER: 15.4017
 ISSUE DATE: 02.11.2019

ELEVATION - RENDERING DAY



SHEET
 A1 - 5

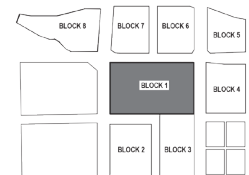


FISERV FORUM
1111 N. 4TH STREET
MILWAUKEE WI

MINOR MODIFICATION:
 FREESTANDING SIGNAGE

REVISIONS

NO.	DATE	DESCRIPTION



KEY PLAN

PROJECT NUMBER: 15.4017
 ISSUE DATE: 02.11.2019

ELEVATION - RENDERING NIGHT

POPULOUS **HNTB** **eua**

SHEET
 A1 - 6