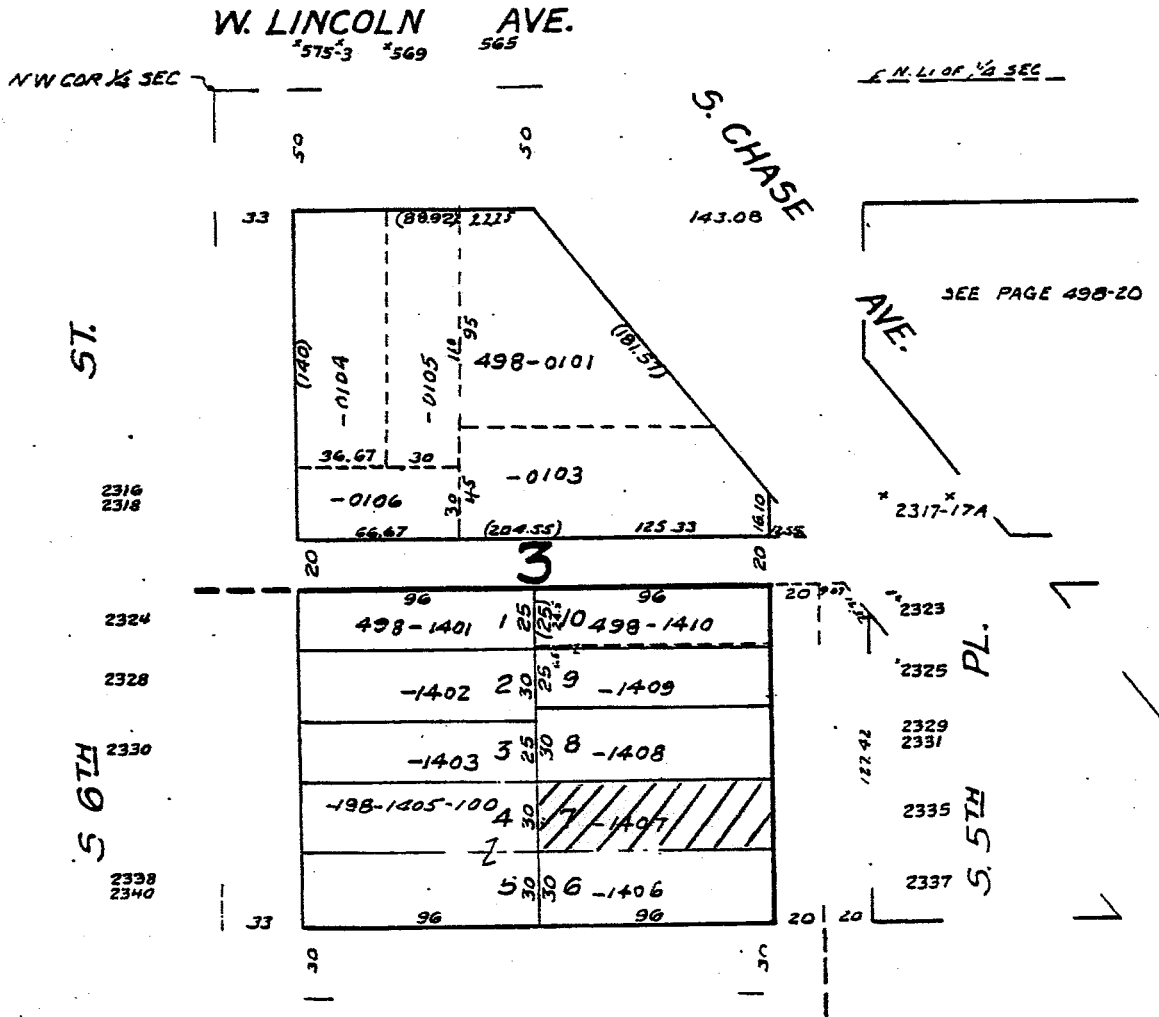


DR. E. CHASE'S SUBD.

REC. 12-13-1877



W. HAYES AVE.
RESUBD. OF PART OF BLK. 3
DR. E. CHASE'S SUBD.

REC. 3-16-1887

NW 08-7-22
SW 08-7-22

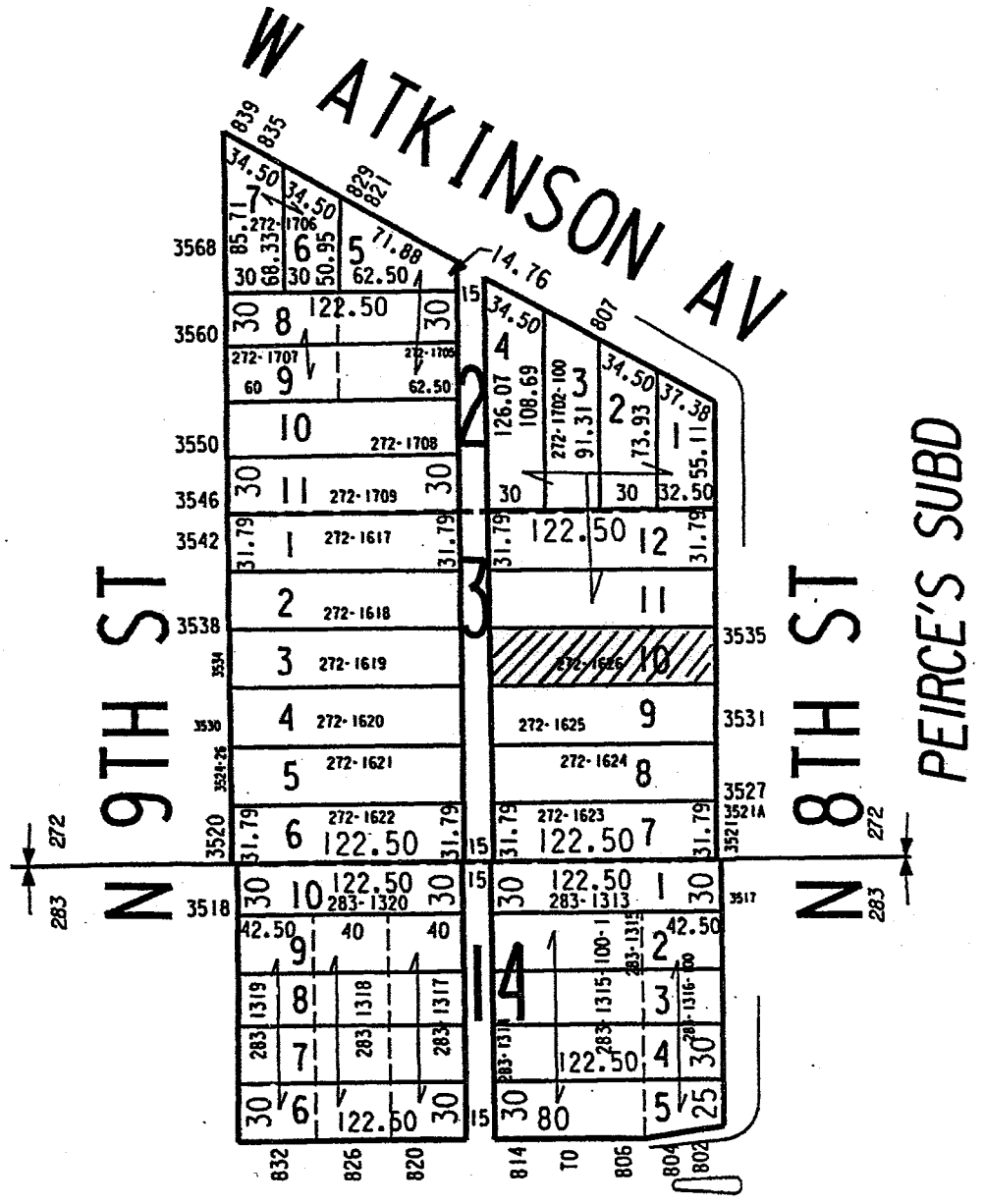
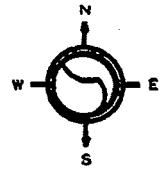
272 - 283

272-18

SCALE 1" = 80'

ATLAS P. 272
ATLAS P. 283

PEOPLE'S BLDG. & LOAN
ASSN. SUBD

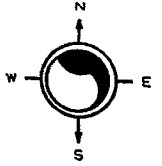


W KEEFE AV
PEIRCE & DAVIS ADDN. NO. 3

NW 17-7-22
ATLAS P. 312

312

312-22
SCALE 1" = 80'



ASSESSMENT
SUBDIVISION
NO. 30

W HADLEY ST

F. HOLLE'S SUBDIVISION

N 9TH LA

N 9TH ST

VOGT'S SUBDIVISION NO. 2

30	18	30	49.50	
120	19	20	1	
312-0001	3	312-0002-100-5	312-3402-100-4	120
30		30	49.50	2767
				15
30	90	30	49.50	2759
	312-3403-100	40	20	
	312-1102 2	312-3404	3	2755
	312-1103 3	3		2749
	312-1104 4	40	40	2749
	312-1105-1005	312-3405	5	
	20	6	6	2739
	312-3407-110-9	7	7	2733
	73.10	8	8	2727
	312-3409-110	9	9	2725
	312-3410-100	10	10	
	312-1111-100-6	11	11	
	30	78	90	49.50
				15

PAGE 312-23 ADJ.	35	34	34.12	49.50
	312-1113-100		312-1114-100	120
	12	13	14	12
	35	34	34.12	49.50
922	916A	916	912	900

W CENTER ST

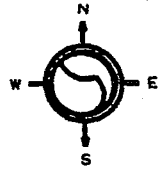
SW 08-7-22

ATLAS P. 283

283

283-14

SCALE 1" = 80'



COTTER'S HOME SUBD

W RING ST

N 9TH ST

N 8TH ST

3248	30	26	122.50	30	15	30	122.50	1	30	3247
3246			283-0026				283-0001			
3244	/ / / / /					35	283-0002	2	35	3245
3242	/ / / / /									
3238		24	283-0024				283-0003	3		3239
3236										
3234		23	283-0023				283-0004	4		3235
3232										3233
3226		22					283-0005	5		3231
3224		21	283-0021-100-5				283-0006	6		3229
										3225
3220		20	283-0020				283-0007	7		3223
3218										3219
		19	283-0019-100-4				283-0008	8		3217
3216										3215
3214		18					283-0009	9		3211
										3207
3206		17	283-0017				283-0010	10		3205
3204										3203
3202		16	283-0016				283-0011	11		3201
3200										
3172		15	283-0015				283-0012	12		3173
3170										3171
3168		14	283-0014				283-0013	13		3169
3166										

W. LINCOLN AVE. HEIGHTS
497

W. LINCOLN AVE.
933 927 923 919 915 909 905
925 921



2304
PLACE
to
2312

120	26.65								120
	-0254	-0253	-0252	-0251	-0250	-0249	497-0248		
9	8	7	6	5	4	3	2	1	
25	26.81	30	"	"	"	"	"	30	

ST.

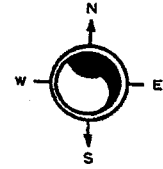
*2318-18A
*2318-B REAR
2322
*2326-26A
2330
*2336-36A
*2338-38A
2342
*2346-46A
*2350
*2350-REAR
S. 9TH 2356
2358
2360
2366

120	2184	120
-0255 10 ³⁰	35	497-0279
-0256 11	34	-0278
-0257 12	33	-0277
-0258 13	32	-0276
-0259 14	31	-0275
-0260 15	30	-0274
-0261 16	29	-0273
-0262 17	28	-0272
-0263 18	27	-0271
-0264 19	26	-0270
-0265 20	25	-0269
-0266 21 ³⁰	24	-0268
22 ³⁰	23	-0267
120	120	

*2317-19
*2319A-REAR
*2322
*2323
2327
2331
*2335-35A
*2339-39A
*2343-43A
2345
2347
*2351-51A
*2355-55A
*2355B-55C REAR
*2361
*2361A
*2363-63A
2367

S. 9TH

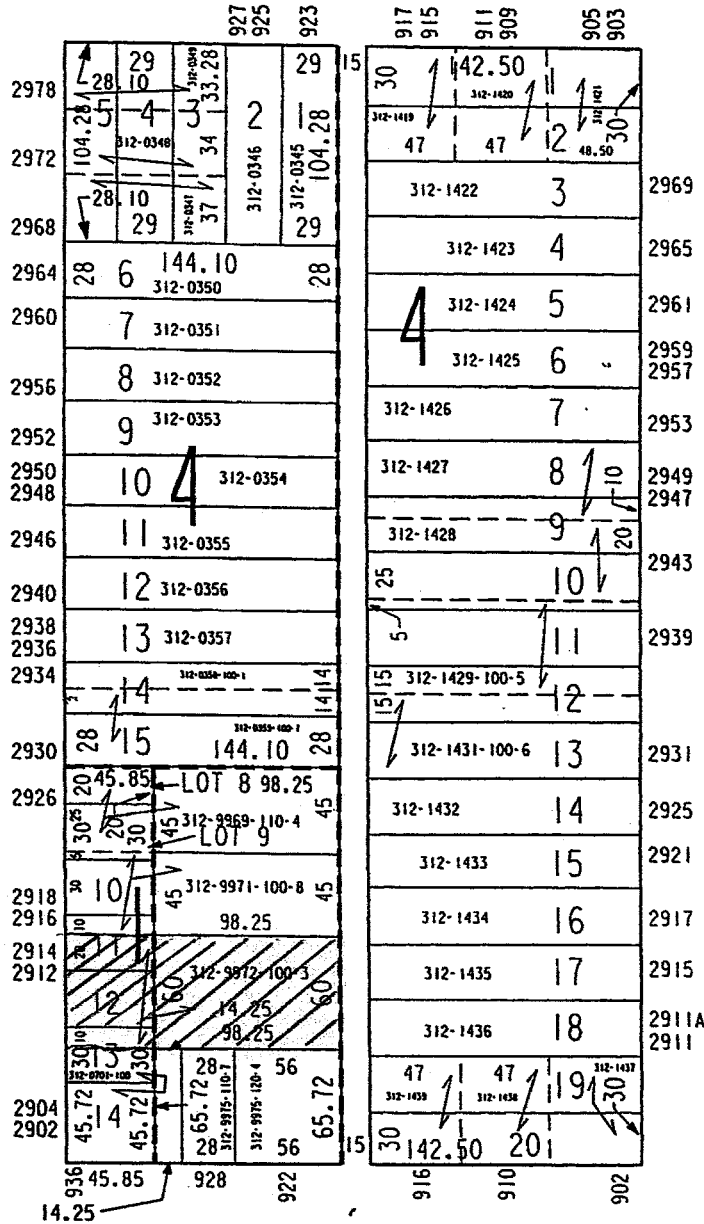
W. HAYES AVE.



W CHAMBERS ST

EICHHORN'S CONCORDIA LAND CO'S
SUBDIVISION NO. 1

N 10TH ST



N 9TH ST
JOHNSTON & PEIRCE'S SUBDIVISION NO. 2

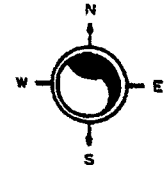
W LOCUST ST

LANDS

NW 17-7-22
ATLAS P. 312

312

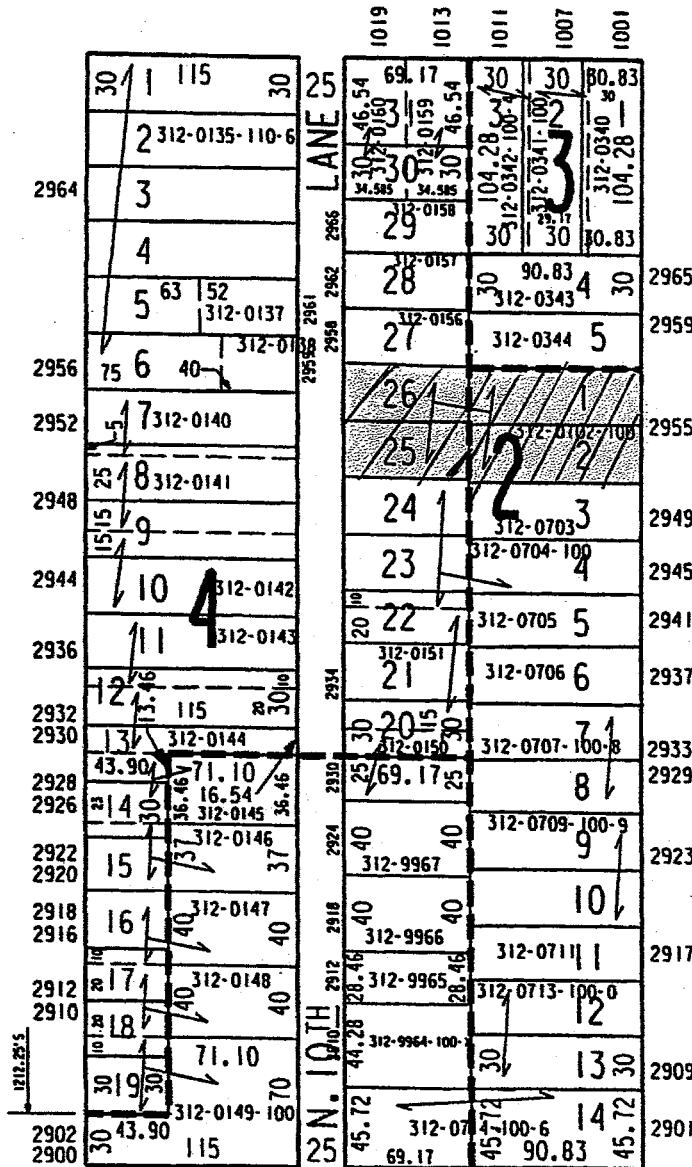
312-26
SCALE 1" = 80'



W CHAMBERS ST

BARTH & KOEFFLER'S SUBDIVISION

N 11TH ST



CONCORDIA LAND
COMPANY'S
SUBDIVISION NO. 1

N 10TH ST

EICHHORN'S SUBDIVISION

W LOCUST ST

LANDS

NW 05-6-22

ATLAS P. 461

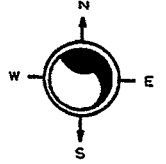
461

461-2

SCALE 1" = 80'

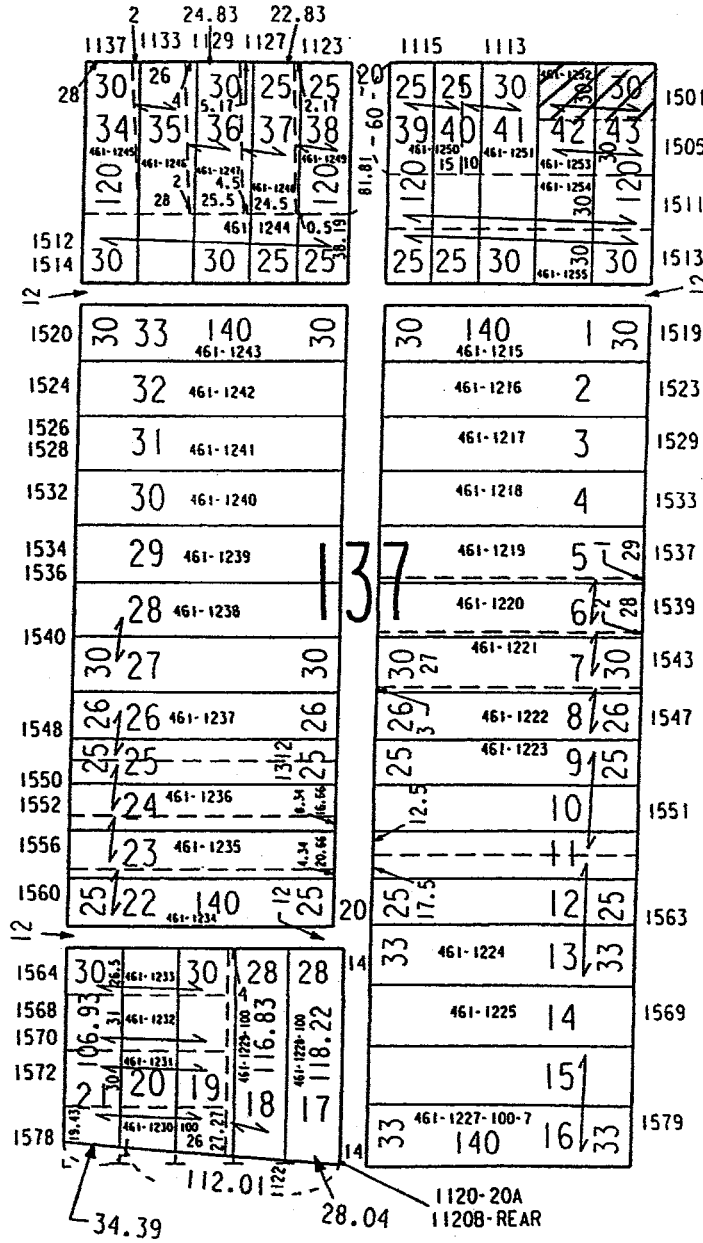
L. W. WEEK'S SUBDIVISION

W ORCHARD ST



S 12TH ST

S 11TH ST

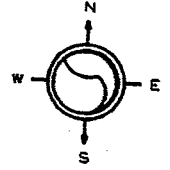


W LAPHAM BL

08-18-97

ACCESSORY OFFICE

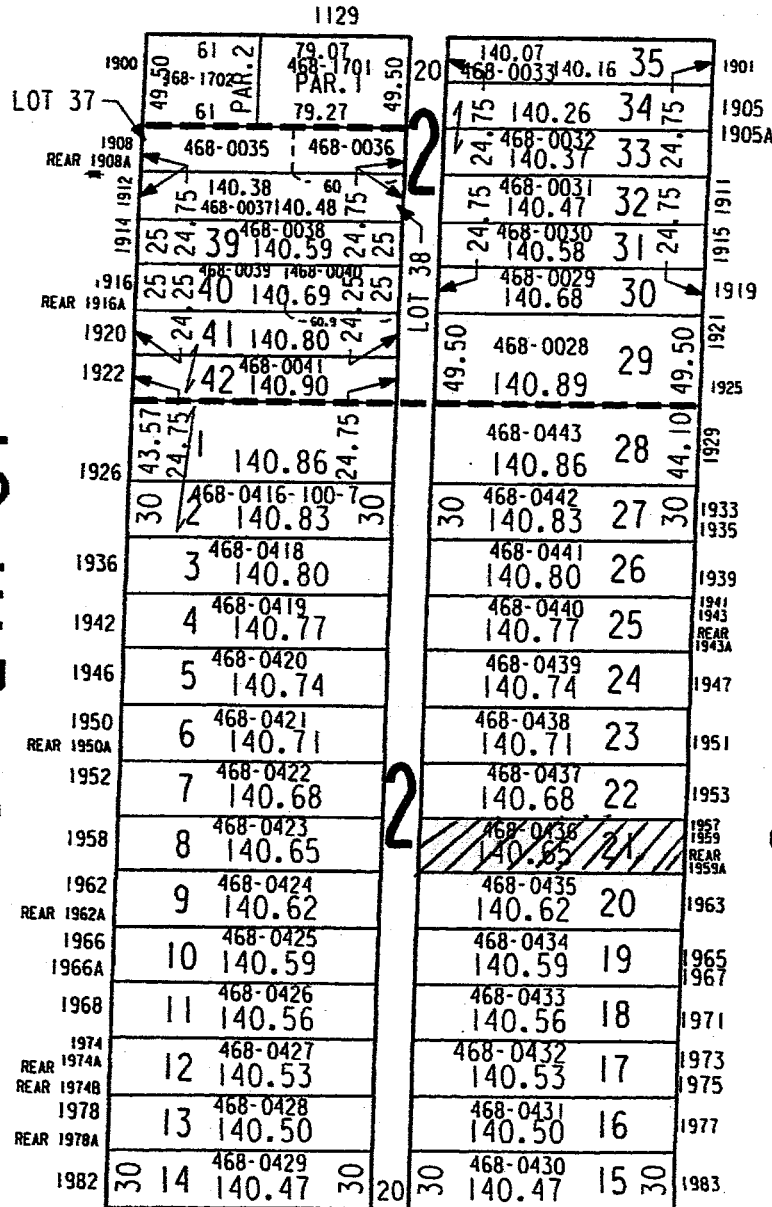
C.S. MAP
NO. 2069



W BURNHAM ST

S 12TH ST

S 11TH ST



ASSESSMENT
SUBD. NO. 43

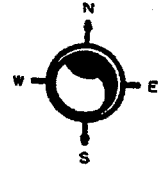
C. HARMMEYER'S SUBD.

W ROGERS ST

NW 17-7-22
ATLAS P. 312

312

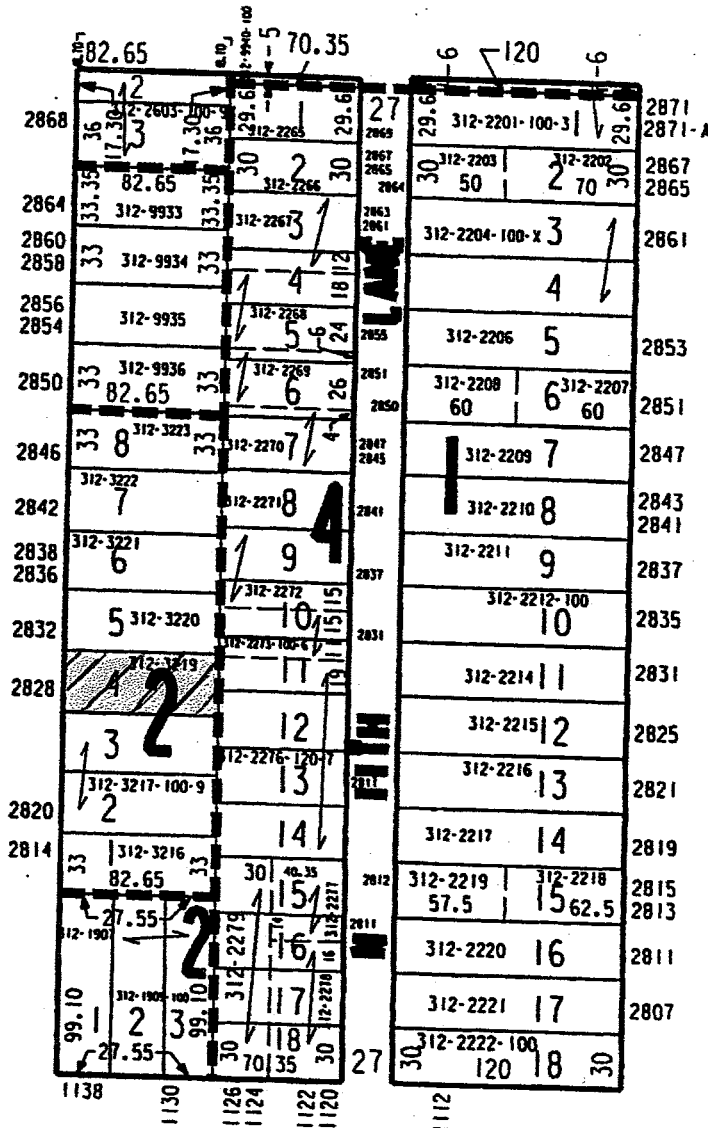
312-30
SCALE 1" = 80'



MAUCH'S
SUBDIVISION LANDS
W LOCUST ST

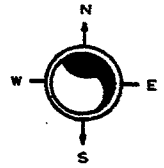
UPHAM'S
SUBDIVISION LANDS
N 12TH ST

N 12TH ST



N 11TH ST
KOCH'S SUBDIVISION

W HADLEY ST

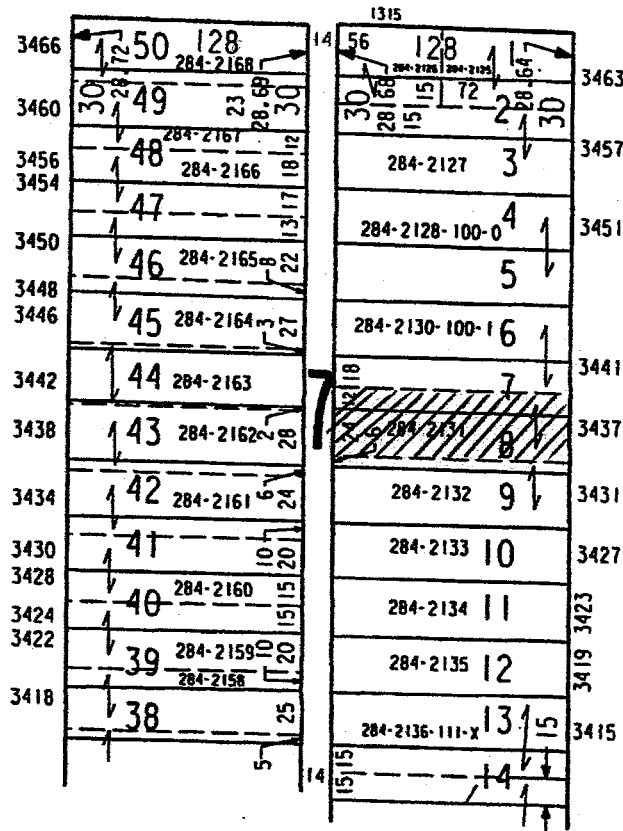


TEUTONIA HEIGHTS

W KEEFE AV

N 14TH ST

N 13TH ST





W. Concordia Ave.

1335 1329 1325 1321 1315 1311 1307 1303
1331 1301

1/4 SEC
E L1 OF 1/4 SEC

9	8	7	6	5	4	3	2	1
284-1608	-1607	-1606	-1605		-1604	-1603	-1602	284-1601

284-1609	10	22
284-1610	21	284-1619

12	13	14	15	16	17	18	19	20
284-1611	-1612	-1613	-1614		-1615	-1616	-1617	284-1618

N. 14 TH ST.

N. 13 TH ST.

1/4 SEC
E L1 OF 1/4 SEC

1332 1328 1324 1318 1314 1308 1304 1302
1334 1310

W. RING ST.

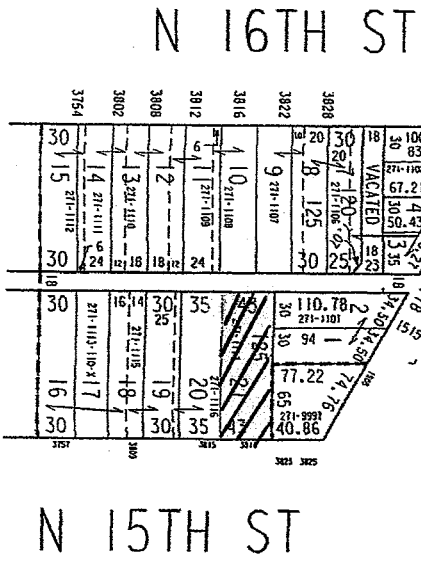
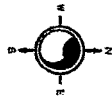
NE 07-7-22
ATLAS P. 271

271

271-12
SCALE 1"=80'

JEAN LA BOULE'S
SUBDIVISION

LANDS
W ATKINSON AV



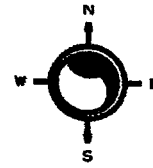
PAGE 271/13 ADJ.

SW 18-7-22
ATLAS P. 325

325

325-06

SCALE 1" = 80'

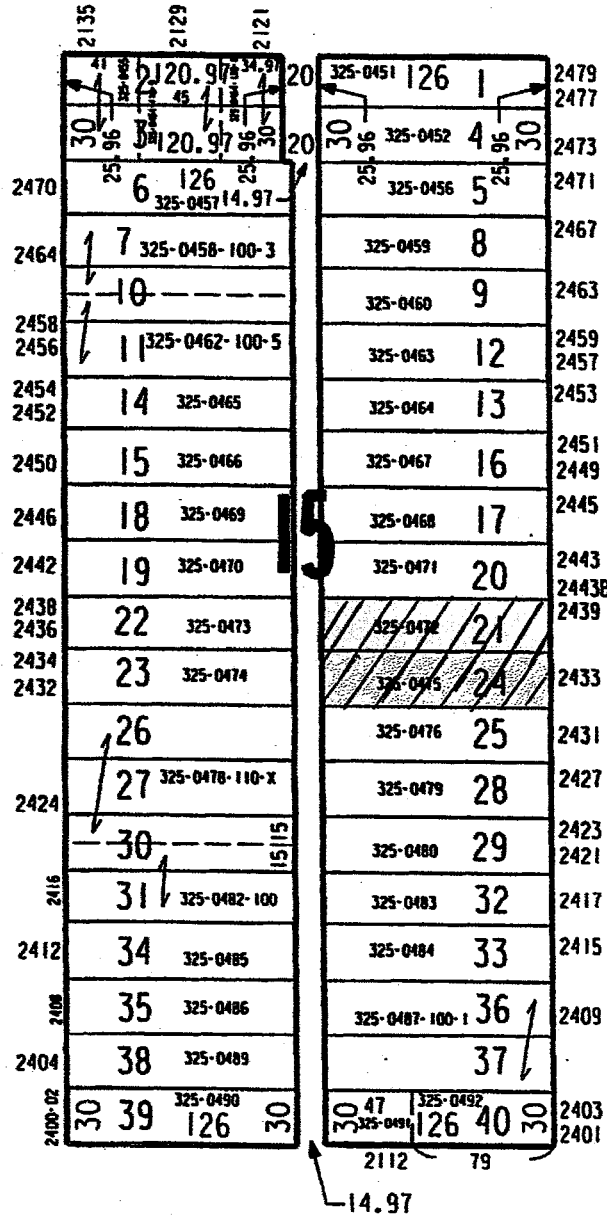


FRITZE'S SUBDIVISION

W WRIGHT ST

N 22ND ST

N 21ST ST



W MEINECKE AV

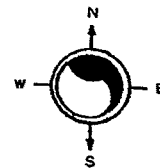
SW 19-7-22

ATLAS P. 364

304

364-2

SCALE 1" = 80'



CERTIFIED
SURVEY MAP
NO. 6096

CERTIFIED
SURVEY MAP
NO. 4074

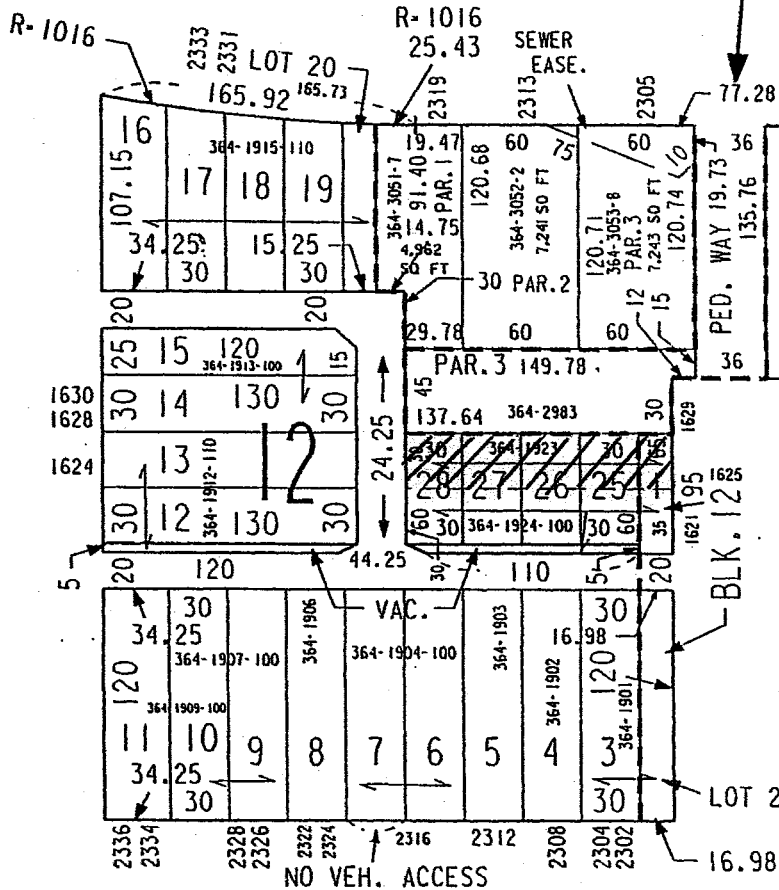
W WALNUT ST

B. K. MILLER'S SUBDIVISION

N 24TH ST

N 23RD ST

DICKERMAN'S
SUBDIVISION



W GALENA ST

07-03-95

ASSESSOR'S OFFICE

N02-075

13

N.W. 7-7-22
ATLAS R 270

270
W. NASH ST.

270-31

3642
3638
3634
3630
3626
3622
3618
3614
3610
3606
3602A
3602
3552
3548
3544
3540
3536
3534
3532
3528A
3528
3522
3520
3516
3512

Vol. 14 Page 36
Eubacher & Damboeck's Subst.

N. 26 TH

270-0101	1	270-1167
-0102	2	2 -1168
-0103	3	3 -1169
-0104	4	4 -1170
-0105	5	5 -1171
-0106	6	6 -1172
-0107	7	7 -1173
-0108	8	8 -1174
-0109	9	9 -1175
-0110	10	10 -1176
-0111	11	11 -1177
-0112	12	12 -1178
-0113	13	13 -1179
-0114	14	14 -1180
-0115	15	15 -1181
-0116-100	16	16 -1182
	17	17 -1183
-0118	18	18 -1184
	19	19 -1185
-0119	20	20 -1186
-0120	21	21 -1187
-0121	22	22 -1188
270-0122	23	23 -1189
	24	24 -1190

3641
3639
3635
3631
3627
3623
3619
3615
3611
3607
3603
3553
3547
3543
3539
3537
3533
3529
3525
3521
3517
3513
3509
3503
3501



Vol. 16 Page 29
Saw & Inv. Ass'n Subd No 10

N. 25 TH

MICROFILMED

W. KEEFE

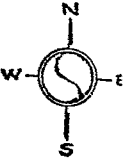
2524
2526

AVE.

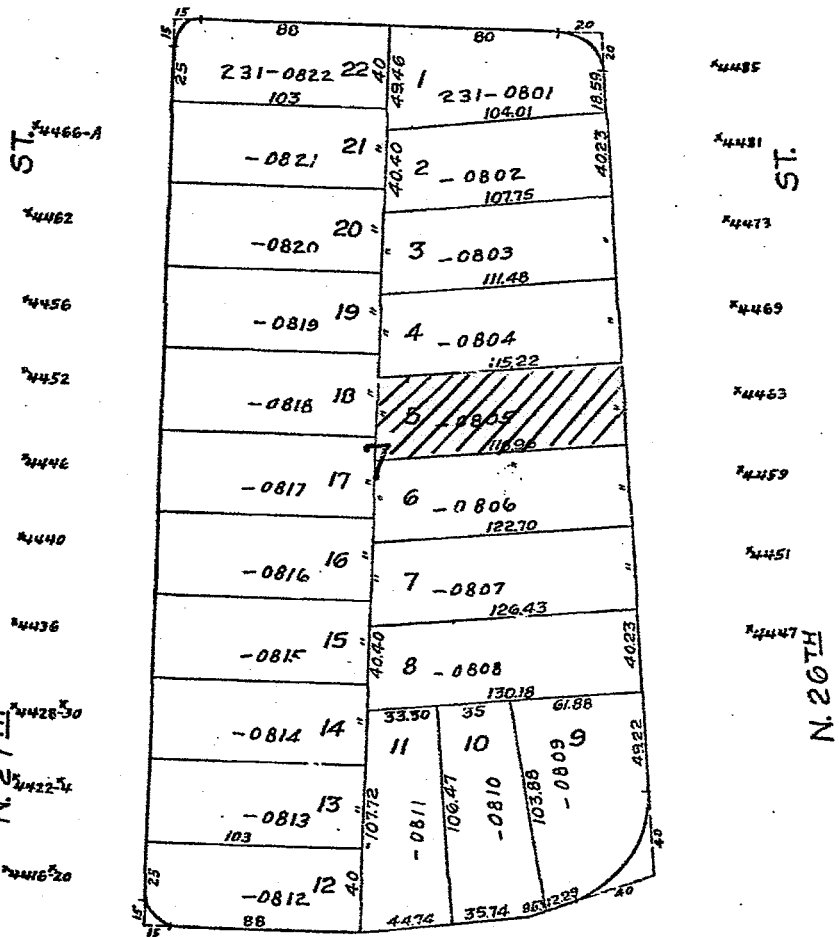
N.W. 6-7-22
ATLAS A 231

231
REPLAT OF BLOCK 7
GARDEN HOMES SUBD.

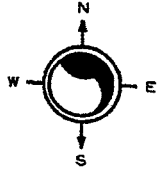
231-27



W. RUBY AVE.



MICROFILMED 3-4-80

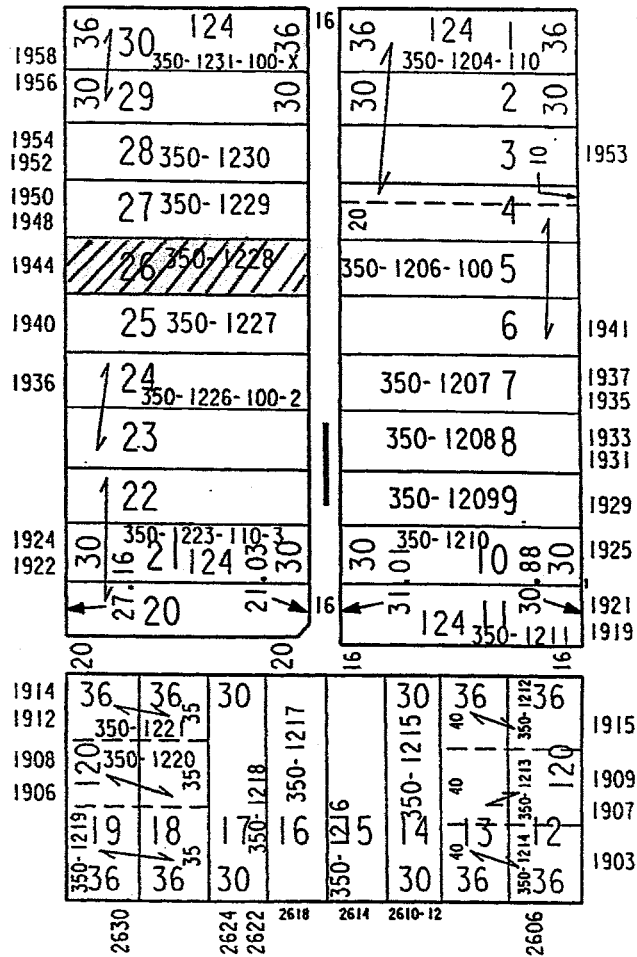


GERMANIA HEIGHTS

W BROWN ST

N 27TH ST

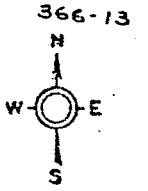
N 26TH ST



W VINE ST

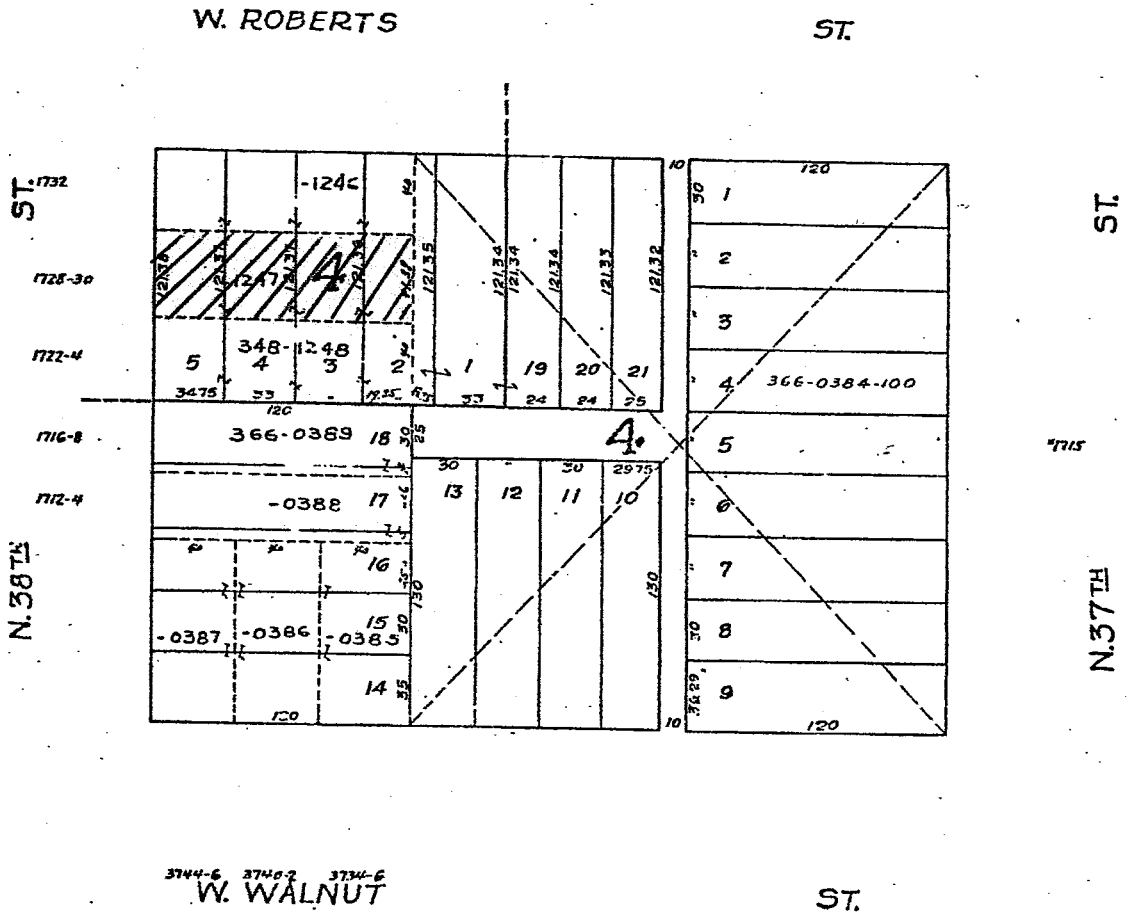
5.W-24-7-21
ATLAS P. 366

348-366



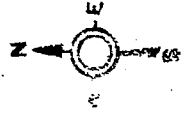
SARNOW'S SUBD.
Vol. 29 Page 31

COLD SPRING HEIGHTS
Vol. 11 Page 37



MICROFILMED

(23)



N. 47TH

ST.

ASSESSMENT SUBD. NO. 87

VOL. 48 P. 44

209-0192 STR.

W. VILLARD
4817

AVE.
4715

4715

4715

4715

4715

4801

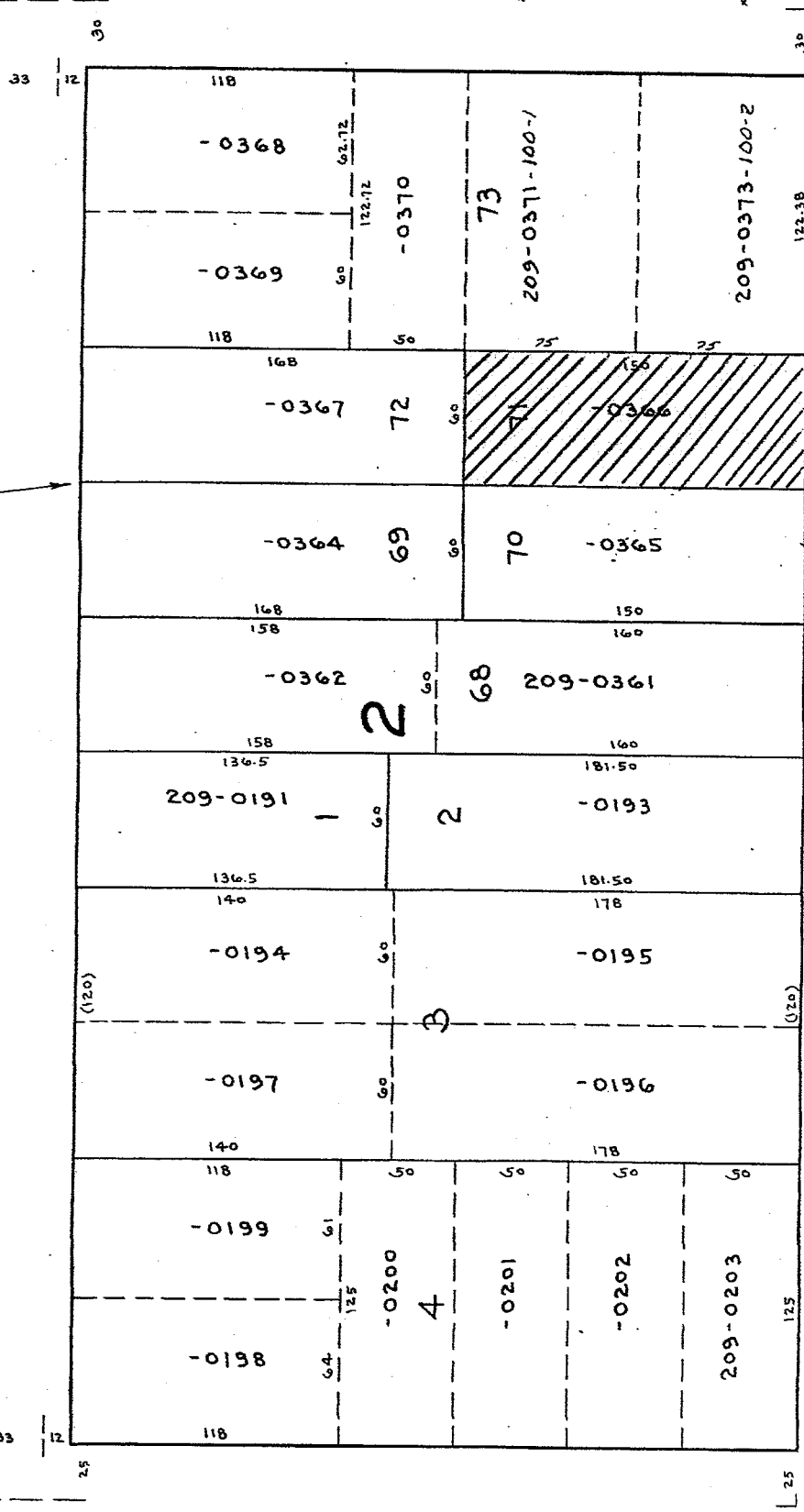
4807

4825

4833

4833

4833



W. EGGERT
4816

4800

4808

4808

4808

4808

4808

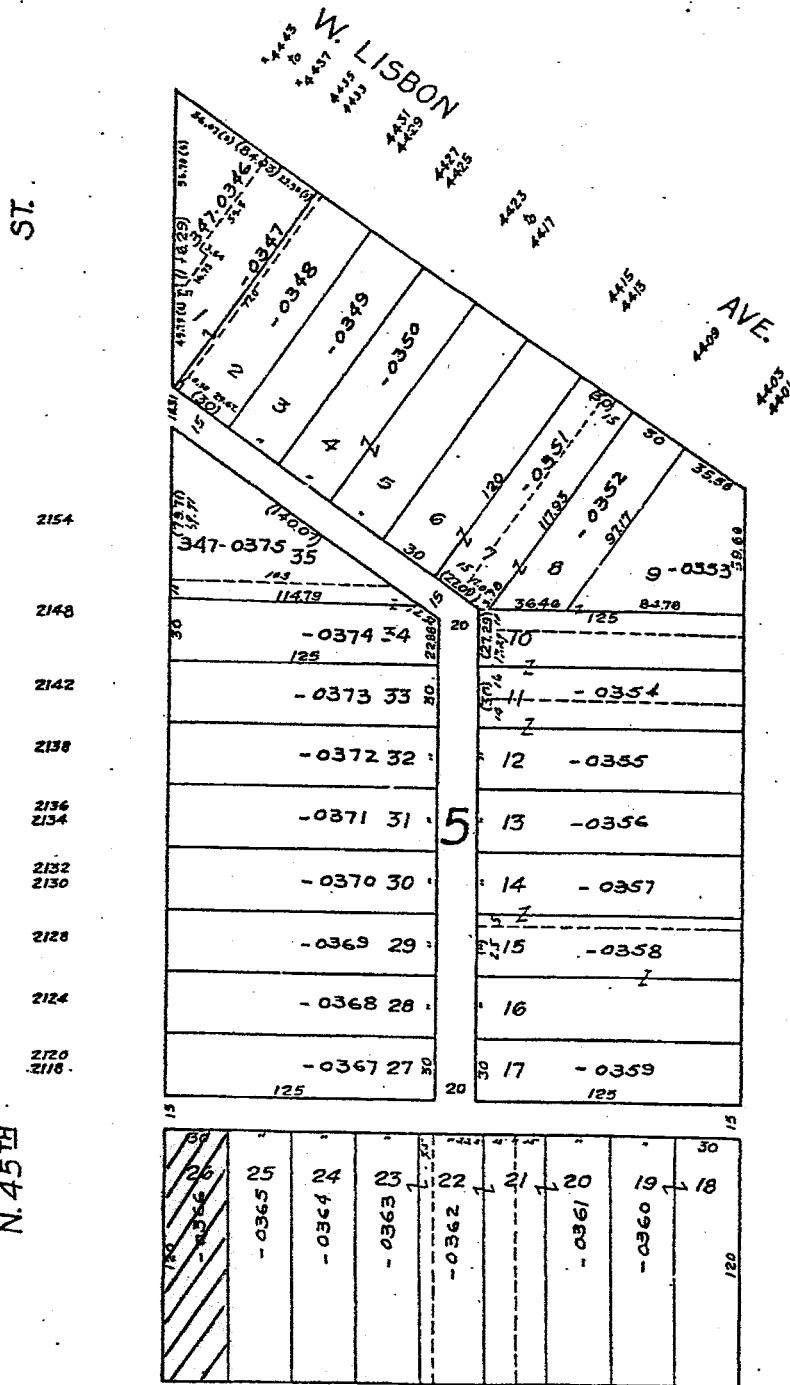
PL.

N.E. 23-7-21
ATLAS P. 347

347

347-05

PUBLIC PARK LAND ASSN. SUBD.
Vol. 18 Page 43



MICROFILMED 2-1-71

4432 4428 4424 4420 4416 4410
4434 4430 4426 4422 4418 4412

W. LLOYD

ST.

NE 33-8-21
CLASS. 2. 1911

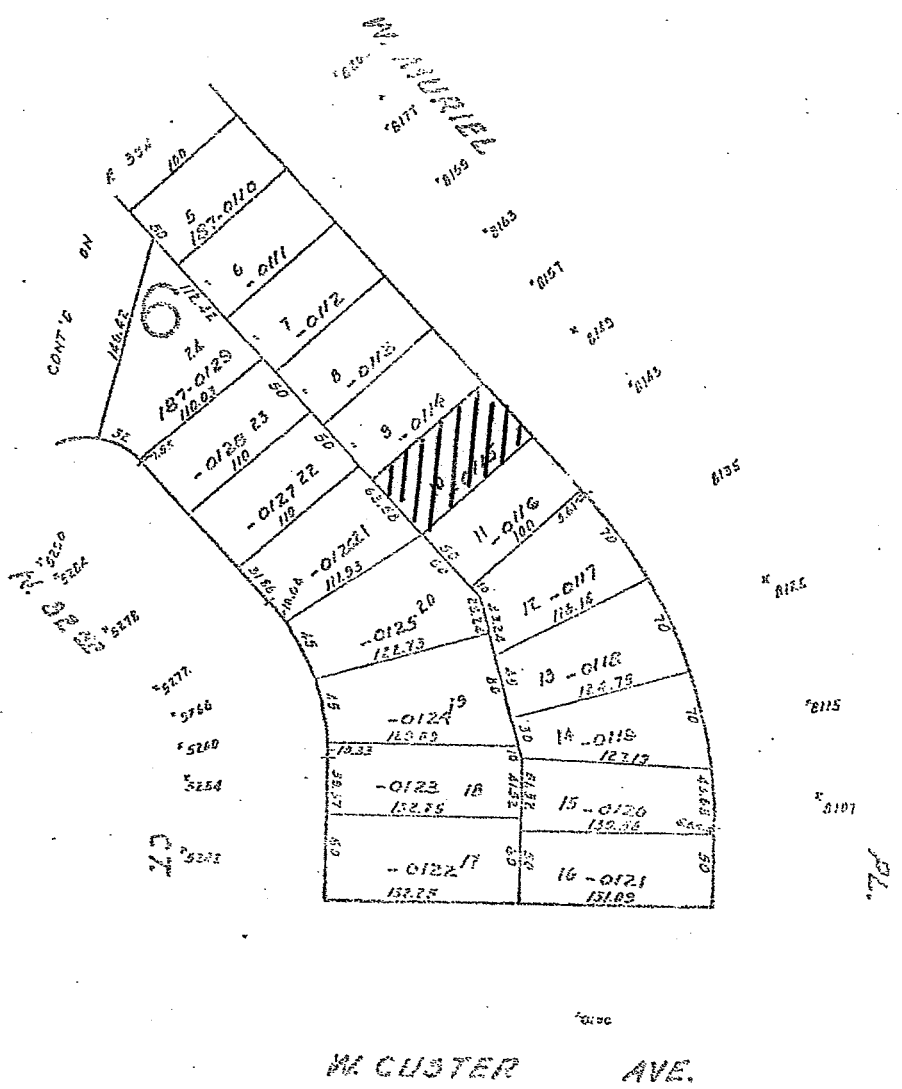
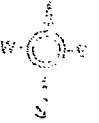
187

187-19

SCALE 1/4" = 100 FT.

SANFORDS SUBDIVISION

VOL. 65 P. 40 TO 48



11-3-8-C

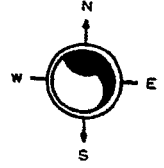
NW 16-7-22
ATLAS P. 314

314

314-32

SCALE 1" = 80'

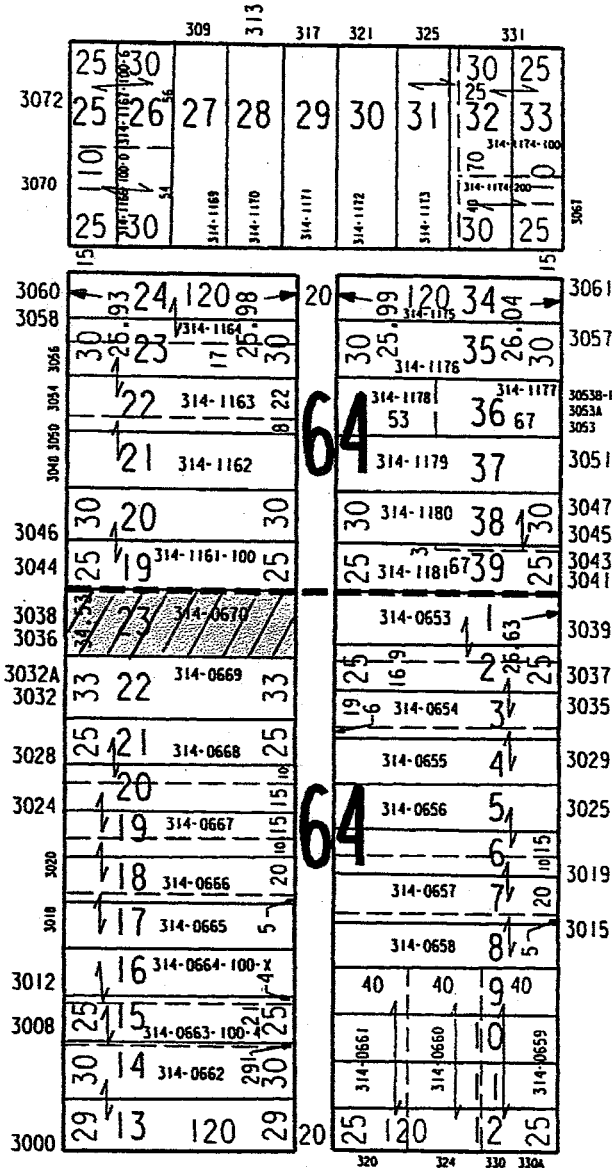
WECHSELBERG & THORNTON'S SUBDIVISION



E BURLEIGH ST

N RICHARDS ST

N BUFFUM ST



E CHAMBERS ST

PAINE & STACY'S SUBDIVISION

N.W. 24-7-21
ATLAS P. 348

348

348-38

LANDS

GRANT PARK
Vol. 16 Page 37



W. NORTH
AVE.

AVE.

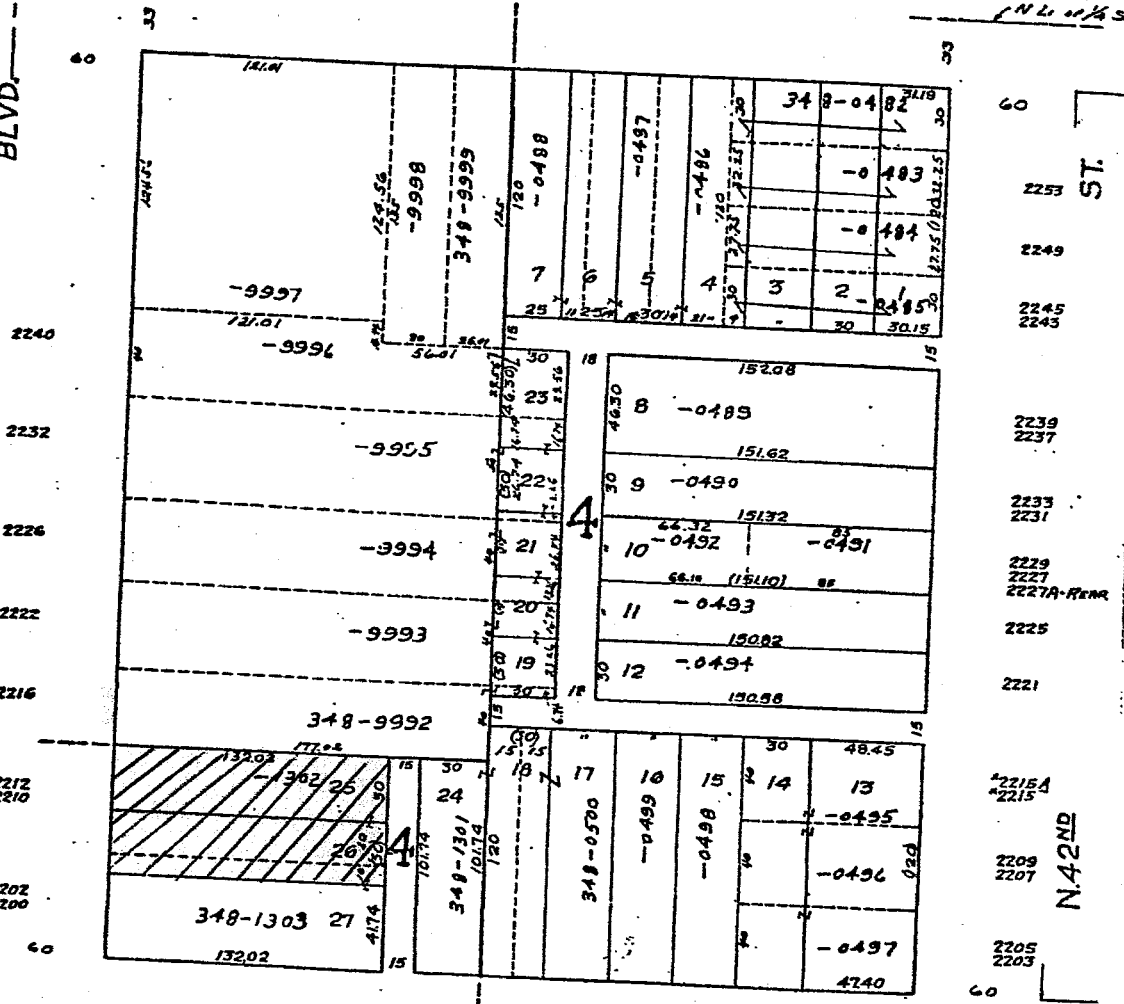
NW COR OF
1/4 SEC

BLVD.

SHERMAN

ST.

N 42ND



4244
W. GARFIELD

4226
4228
4220
4222
4214
4210

AVE.

SUBDIVISION OF LOT 7 BLK 5,
" 7 " 6, } GRANT PARK
" 24 " 4. }
Vol. 20 Page 27

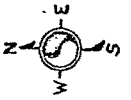
MICROFILMED 1-27-69

TR 11
BL 305
RD 10 4

N.E. 7-7-22
ATLAS P. 271

271

271-31

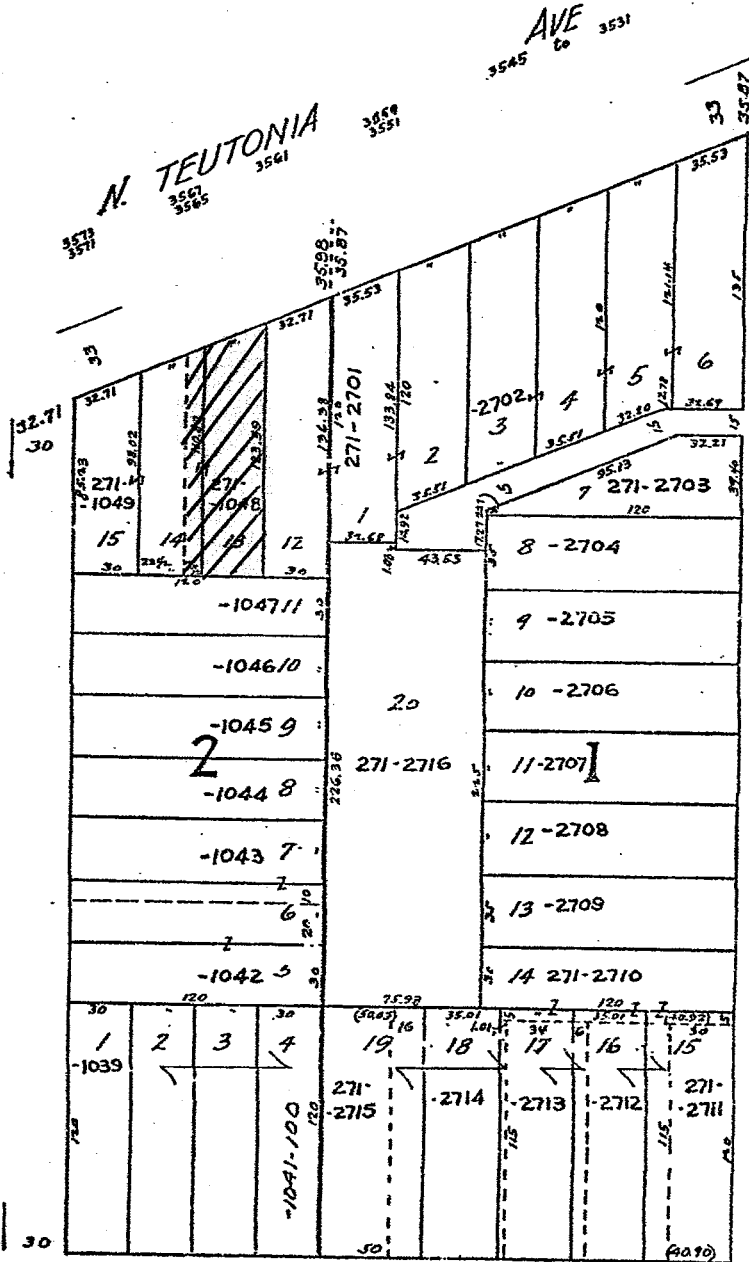


KENNAN & HILE'S SUBD.

W. FINN

PL.

1941
1945
1947
1949
1953
1959
1957
1963-64
1965
1981



1926
1932
1936
1938
1940
1944
1948
1954
1958

W. KEEFFE AVE.

JOSEPH WITTIG'S SUBDIVISION

MICROFILMED 2-26-51

3540 3530 3522 3524 3520 3514 3516 3512 3506 3502

N. 20th St.

SW COR. 1/4