

Milwaukee Job Corps Center - Site Fence

North 60th St.
Milwaukee, WI

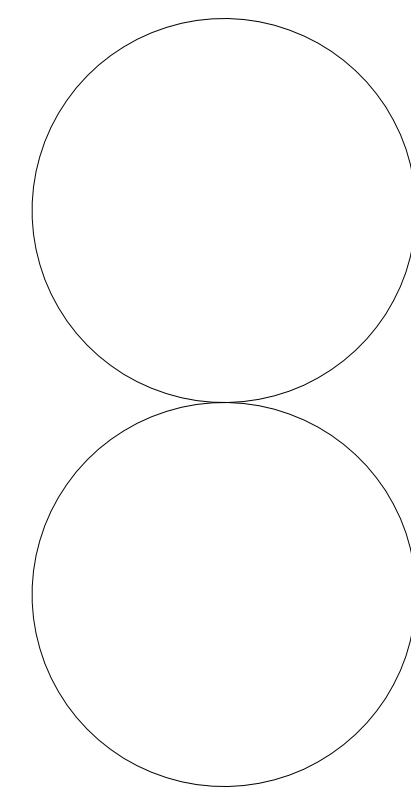
06/14/2011

CONTINUUM ARCHITECTS + PLANNERS, S.C.
PROJECT NUMBER: 070301

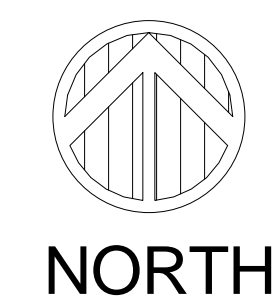
OWNER:
U.S. DEPARTMENT OF LABOR - OFFICE OF JOB CORPS
200 CONSTITUTION AVE, NW
ROOM NORTH 4460
WASHINGTON, DC 20210
TEL. (202) 693-3108
FAX. (202) 693-3850

ARCHITECT:
CONTINUUM ARCHITECTS + PLANNERS, S.C.
228 SOUTH FIRST STREET - SUITE 301
MILWAUKEE, WI 53204
TEL. (414) 220-9640
FAX. (414) 220-9595

CIVIL ENGINEER:
BLOOM COMPANIES, LLC
10501 W. RESEARCH DRIVE, SUITE 100
MILWAUKEE, WI 53226
TEL. (414) 771-3390
FAX. (414) 771-4490



VICINITY MAP
SCALE: NTS



SHEET INDEX

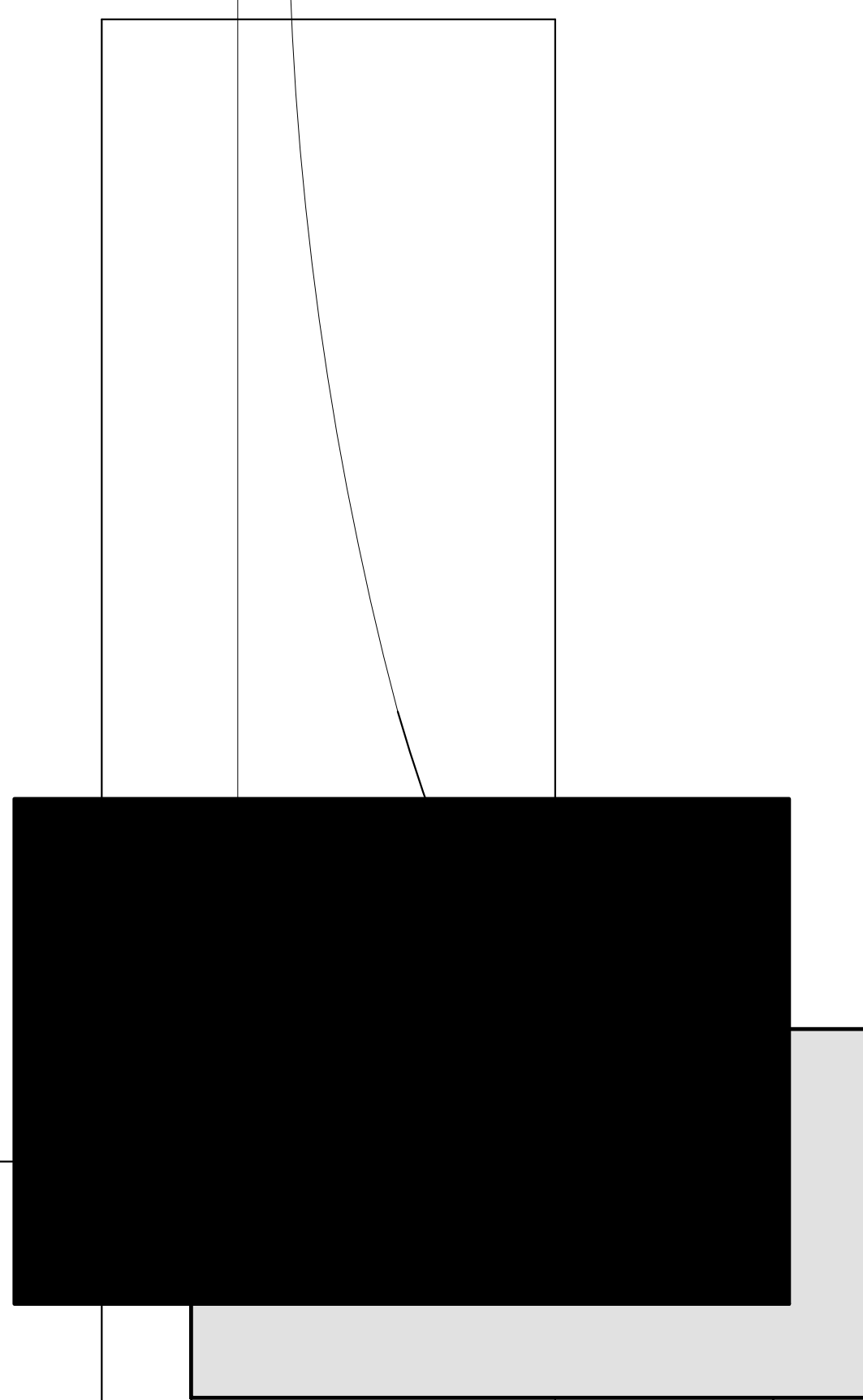
A0.00 - TITLE SHEET

ARCHITECTURAL

A1.00 - SITE INFORMATION

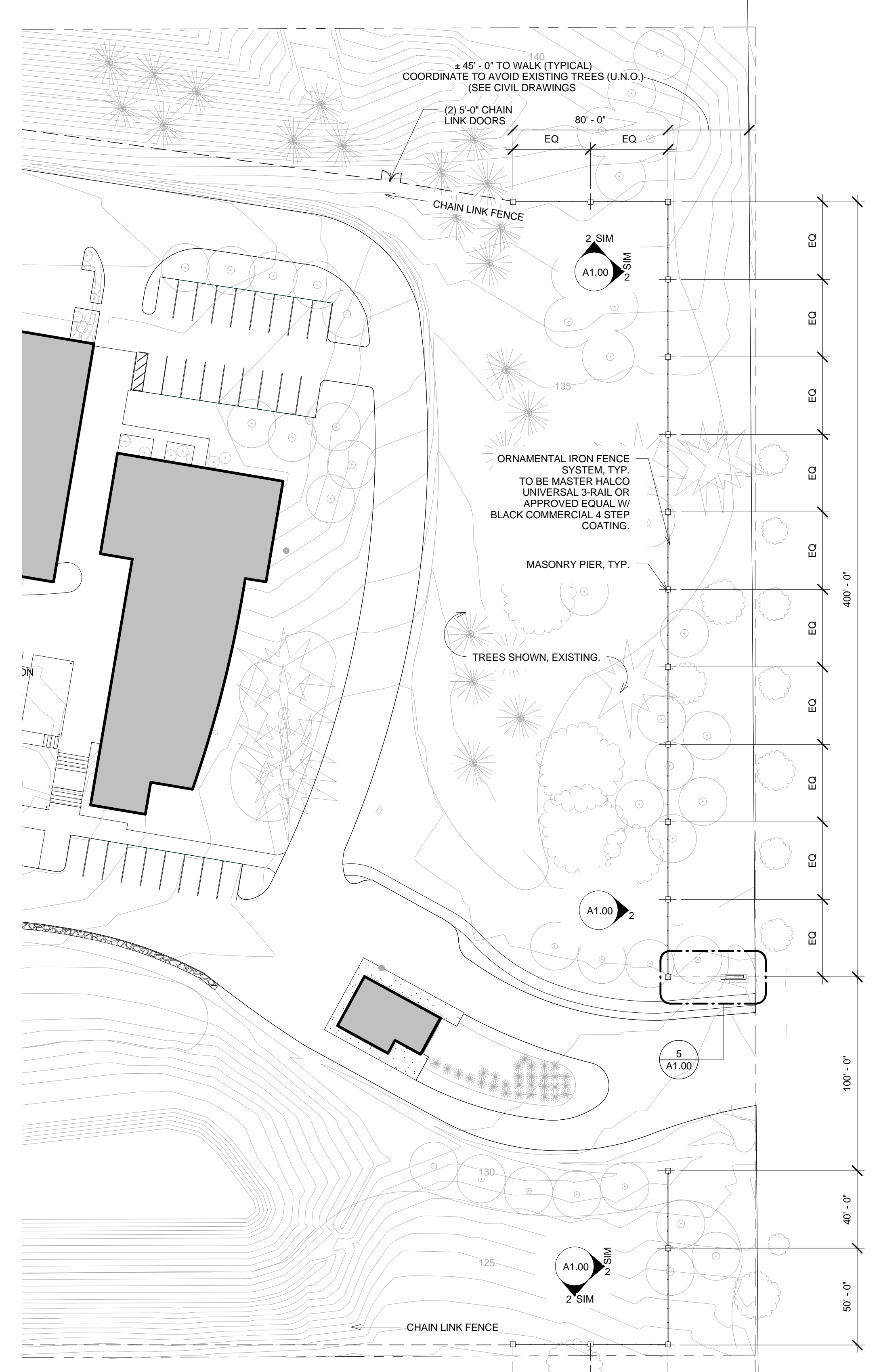
CIVIL

- C1.11 - CIVIL SITE - CAINLINK FENCE PLAN
- C1.12 - CIVIL SITE - ORNAMENTAL FENCE PLAN
- C1.13 - CIVIL SITE - SPORT FIELD PLAN

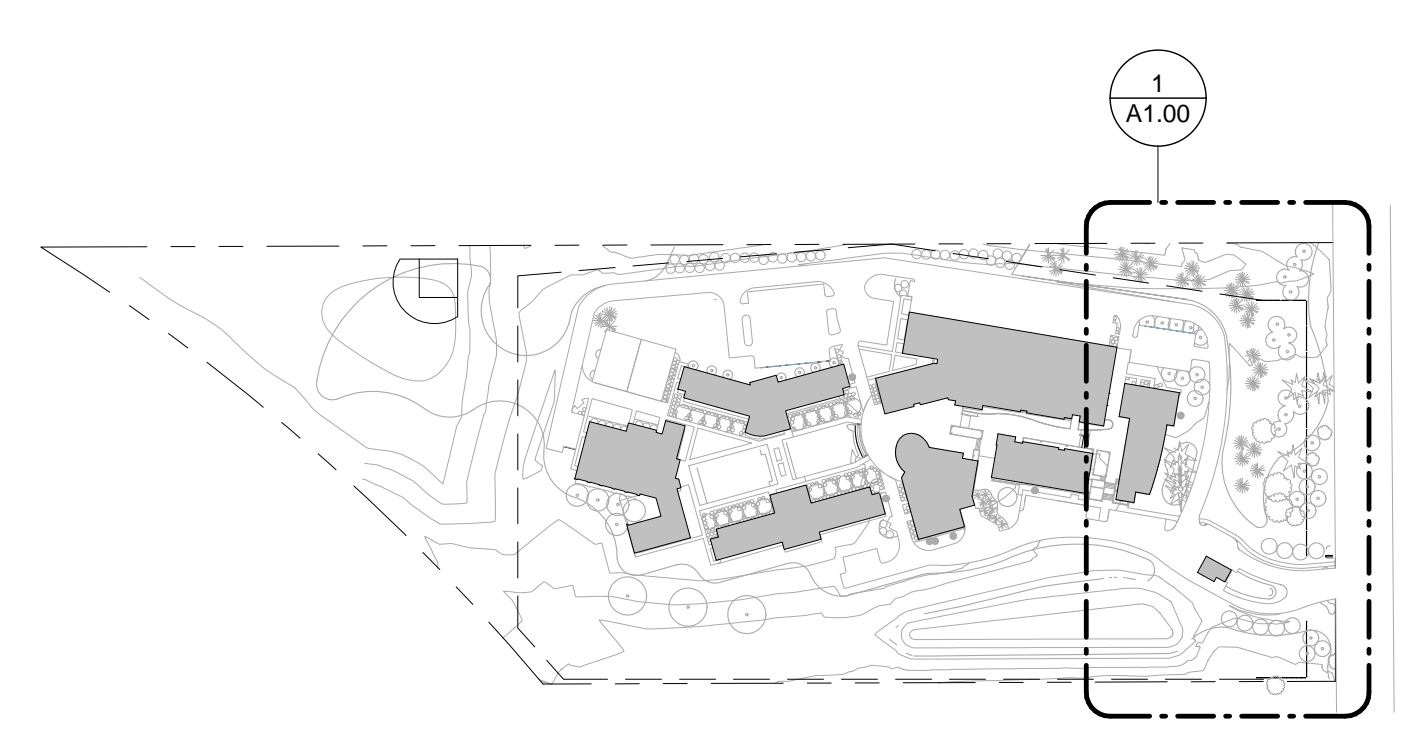


ISSUE	DATE	REMARKS

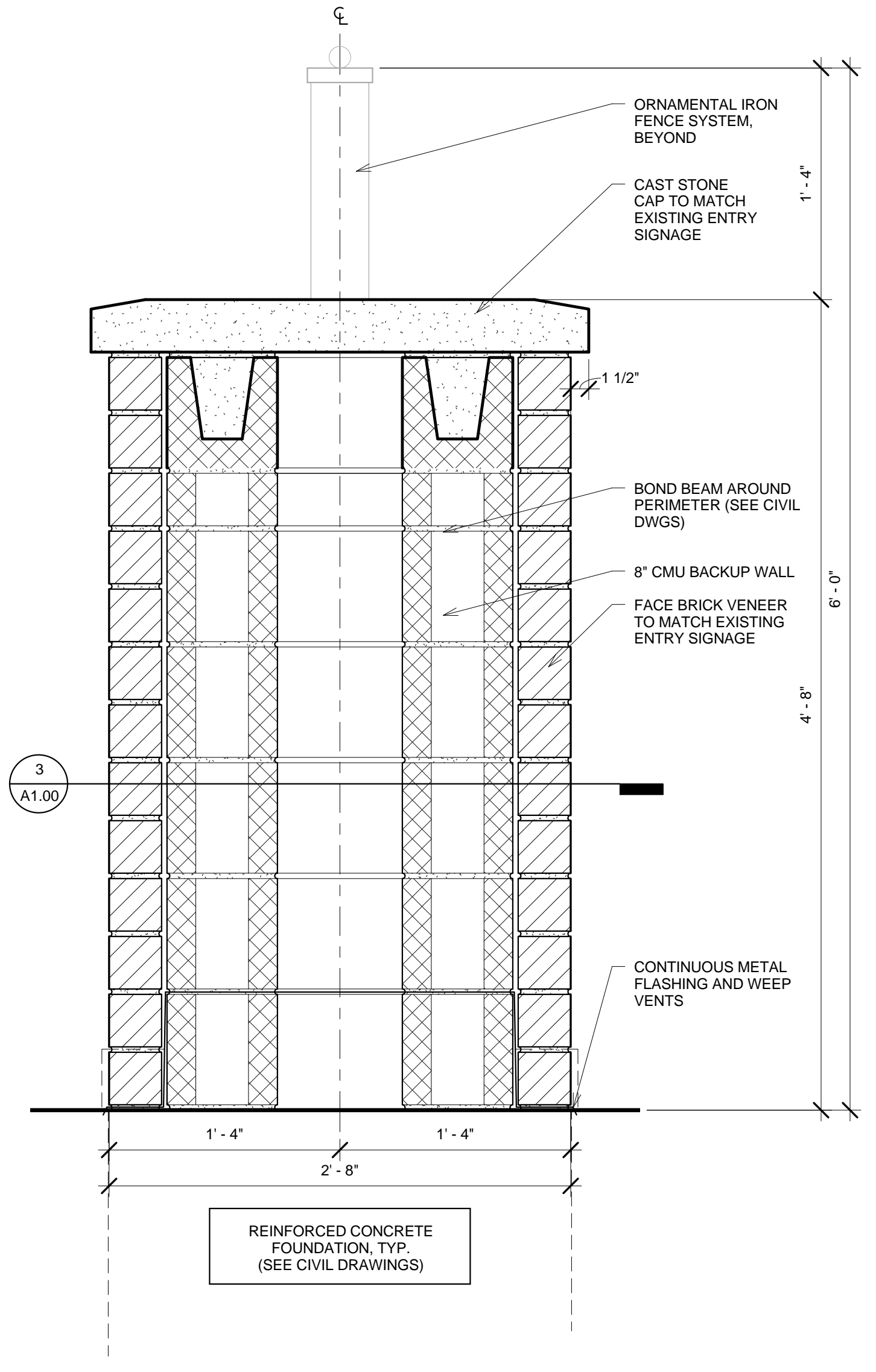
Issue:	Date:	Remarks:
Issue:	Date:	Remarks:



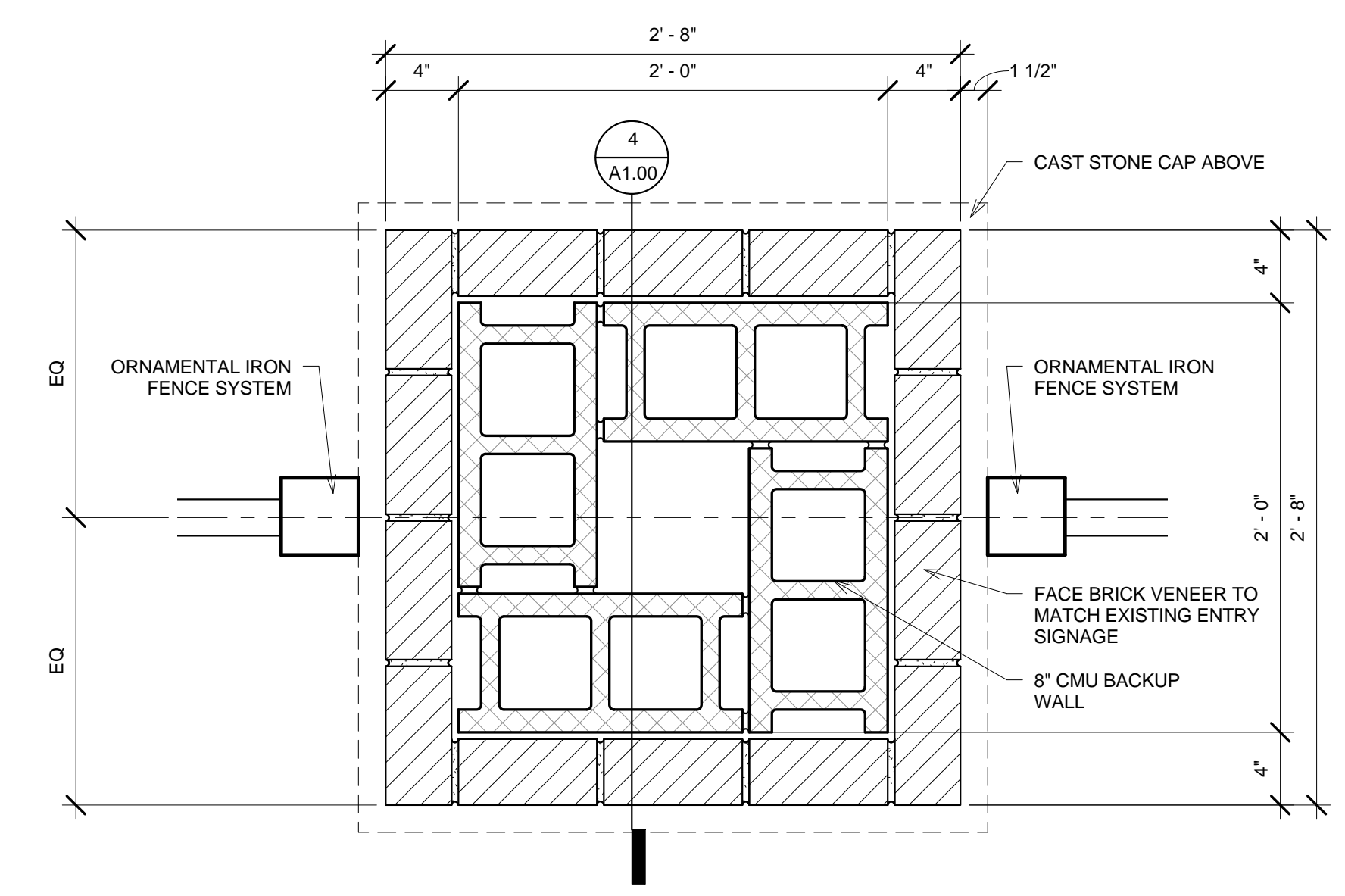
1 SITE PLAN
Scale: 1" = 40'-0"



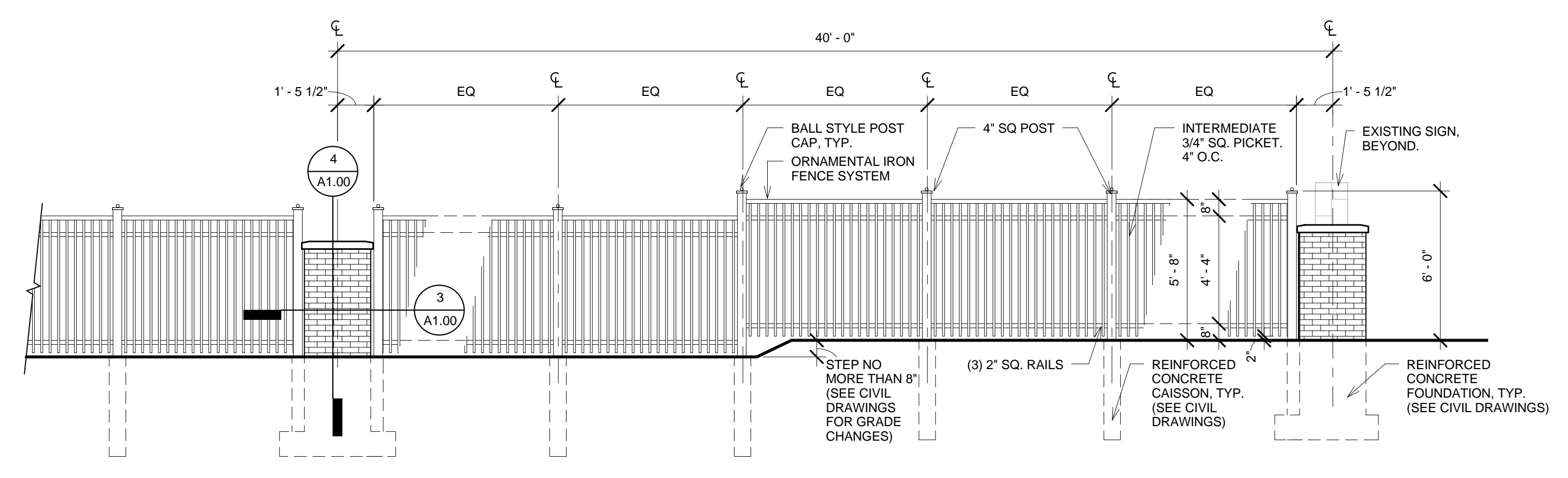
KEY PLAN



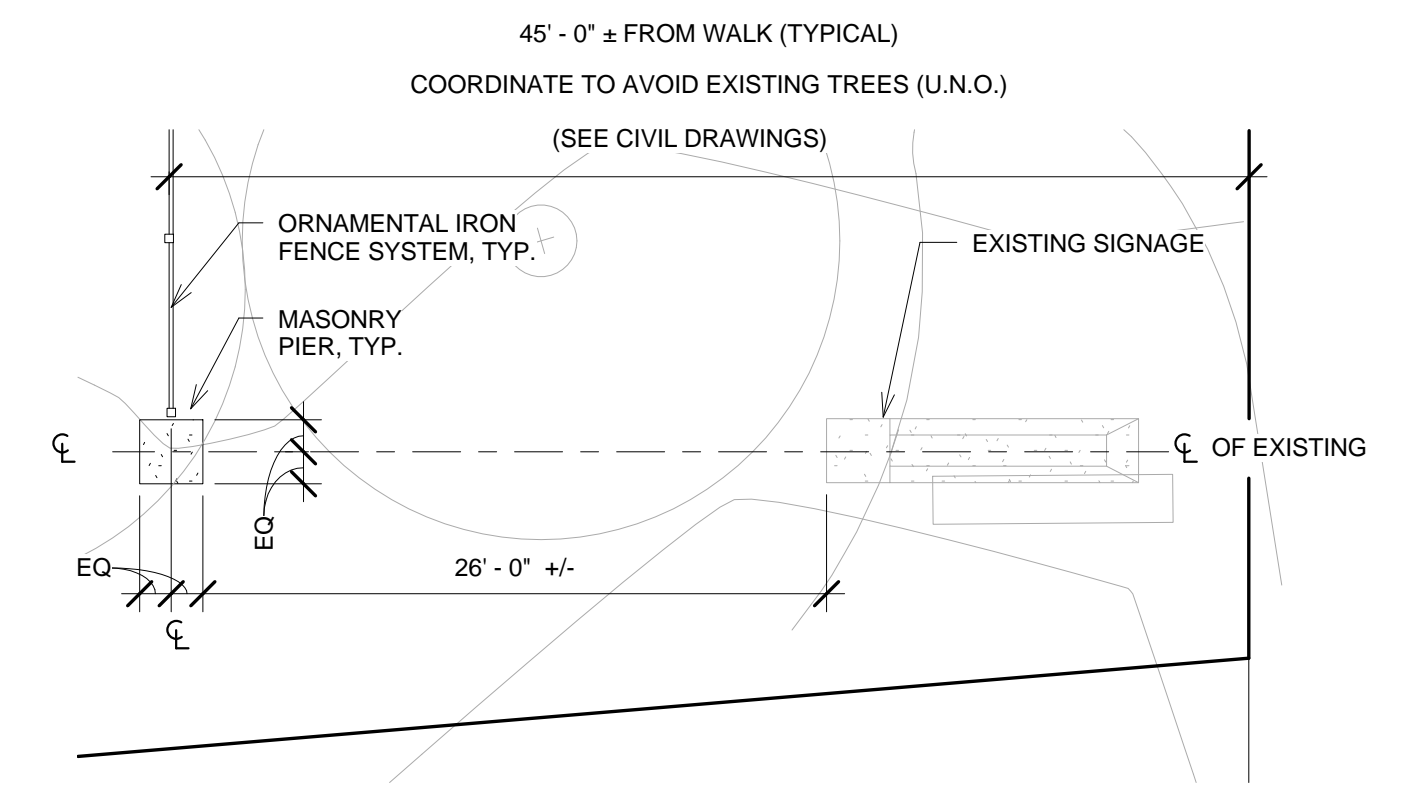
4 SECTION DETAIL @ MASONRY PIER
Scale: 1 1/2" = 1'-0"



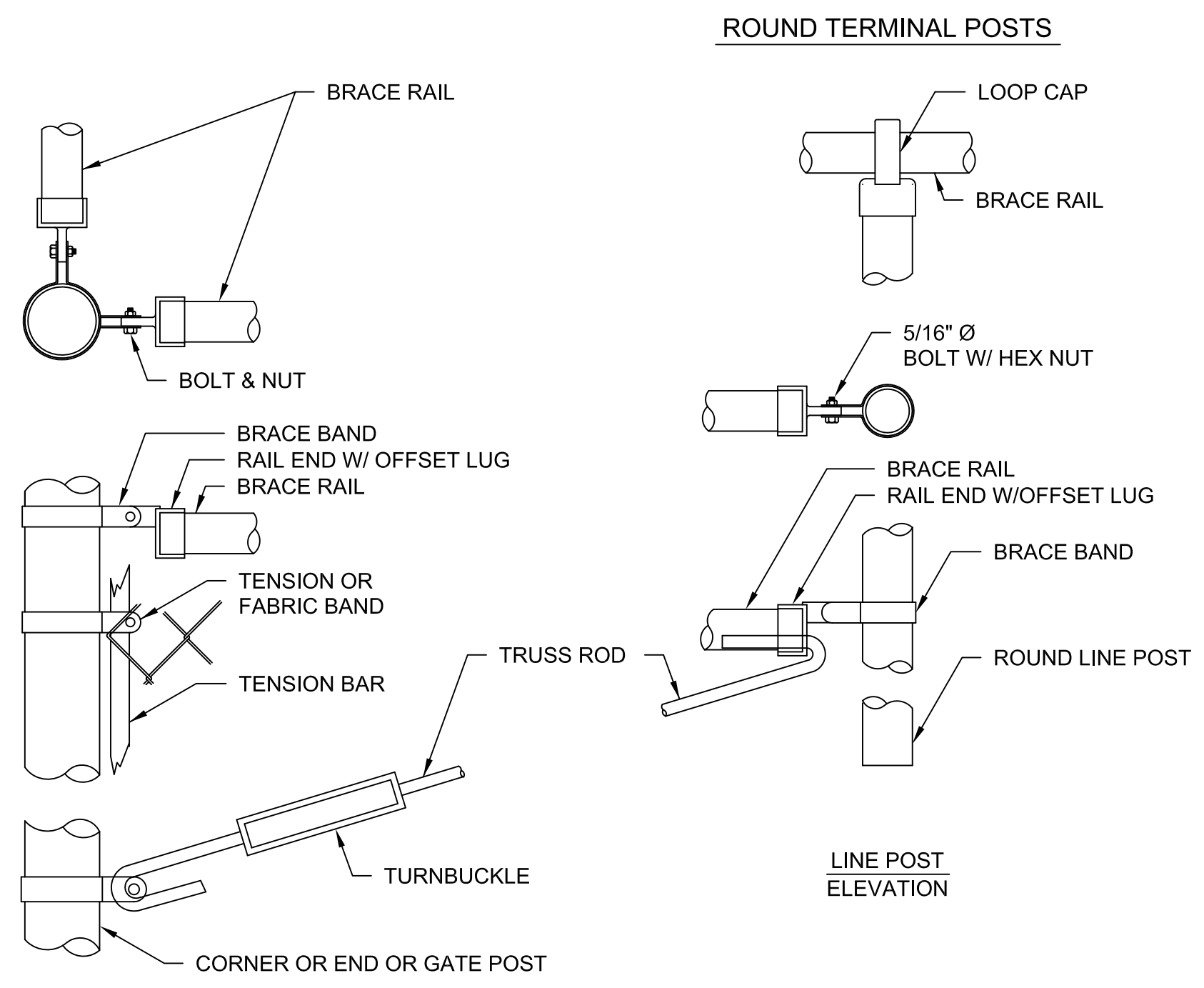
3 PLAN DETAIL @ MASONRY PIER
Scale: 1 1/2" = 1'-0"



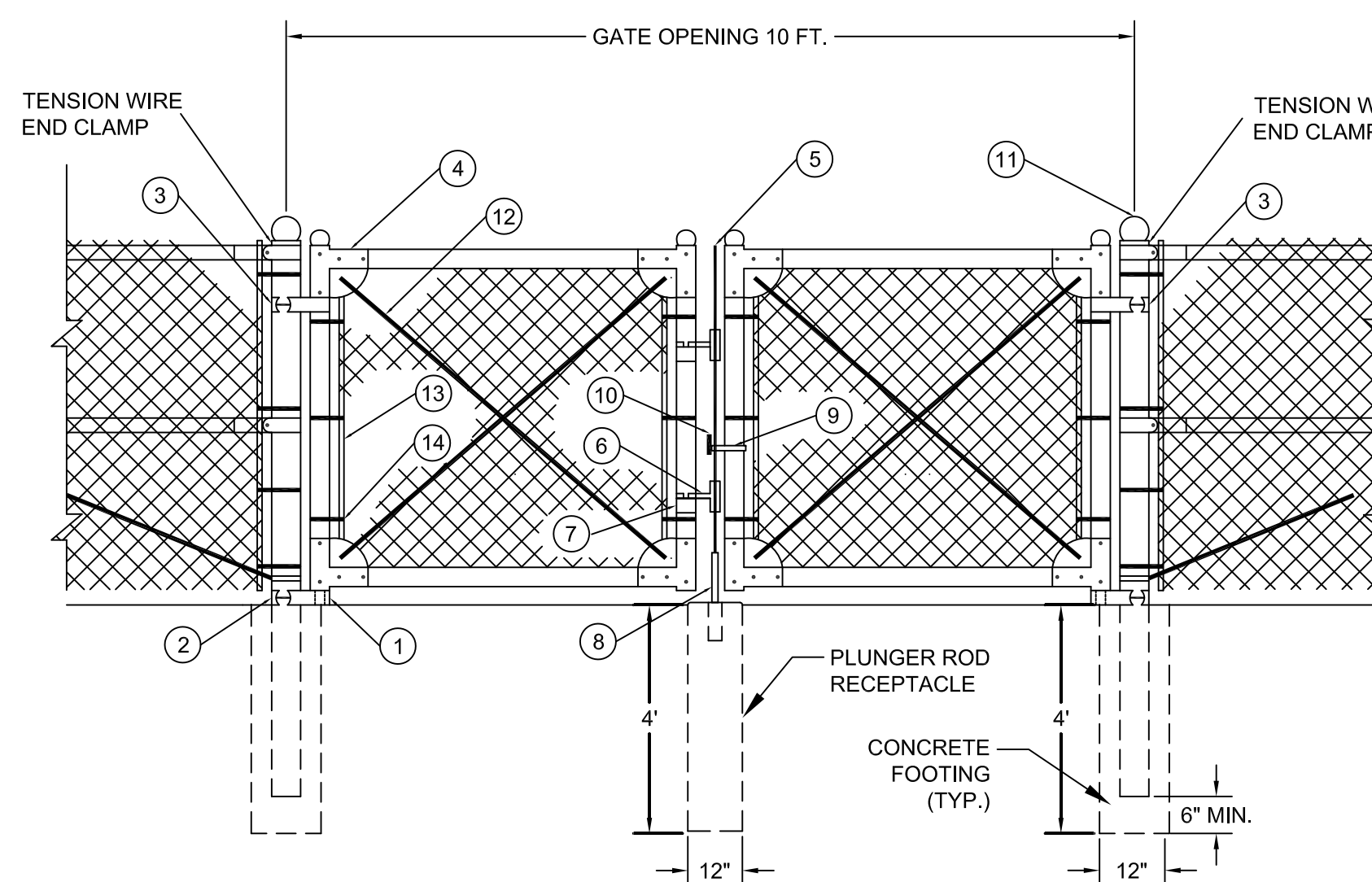
2 TYPICAL PIER TO PIER ELEVATION
Scale: 1/4" = 1'-0"



5 ENLARGED PLAN - PIER LOCATION
Scale: 1/8" = 1'-0"



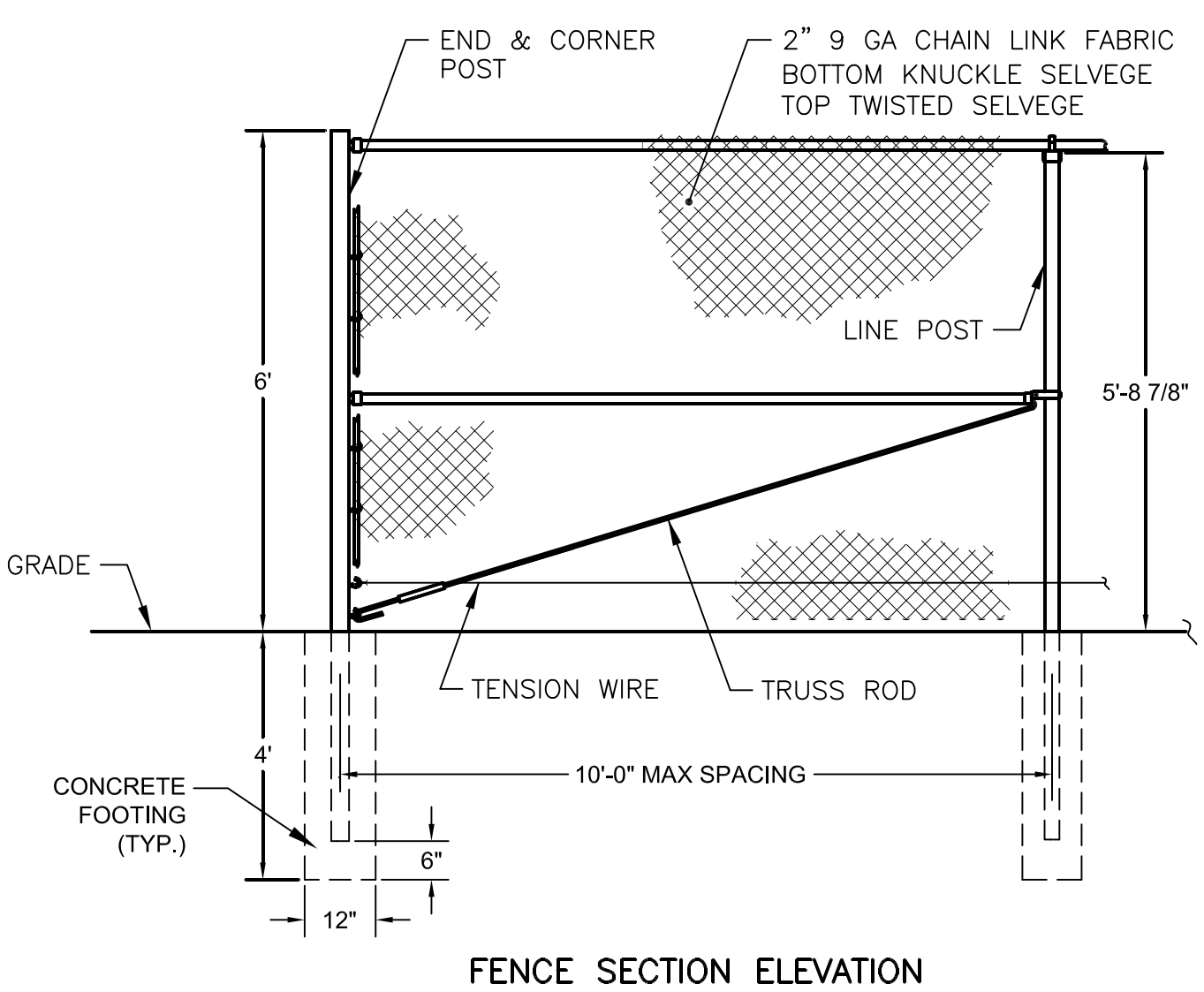
END, CORNER, OR GATE POST ELEVATION



GATE DETAIL

PART NO.	DESCRIPTION
1	STRAIGHT PLUG
2	BOTTOM HINGE
3	TOP HINGE
4	CORNER ELBOW
5	PLUNGER ROD
6	LATCH FORK
7	FORK CATCH
8	PLUNGER ROD CATCH
9	LOCK KEEPER GUIDE
10	LOCK KEEPER
11	ORNAMENTAL TOPS
12	TRUSS RODS
13	STRETCHER BAR
14	HOOK BOLTS

- GATE NOTES:**
- THE FENCING SHALL BE #9 GAGE FENCE FABRIC, STANDARD 2-INCH CHAIN LINK DIAMOND MESH.
 - THE PLUNGER ROD RECEPTACLE MAY BE FORMED OR DRILLED

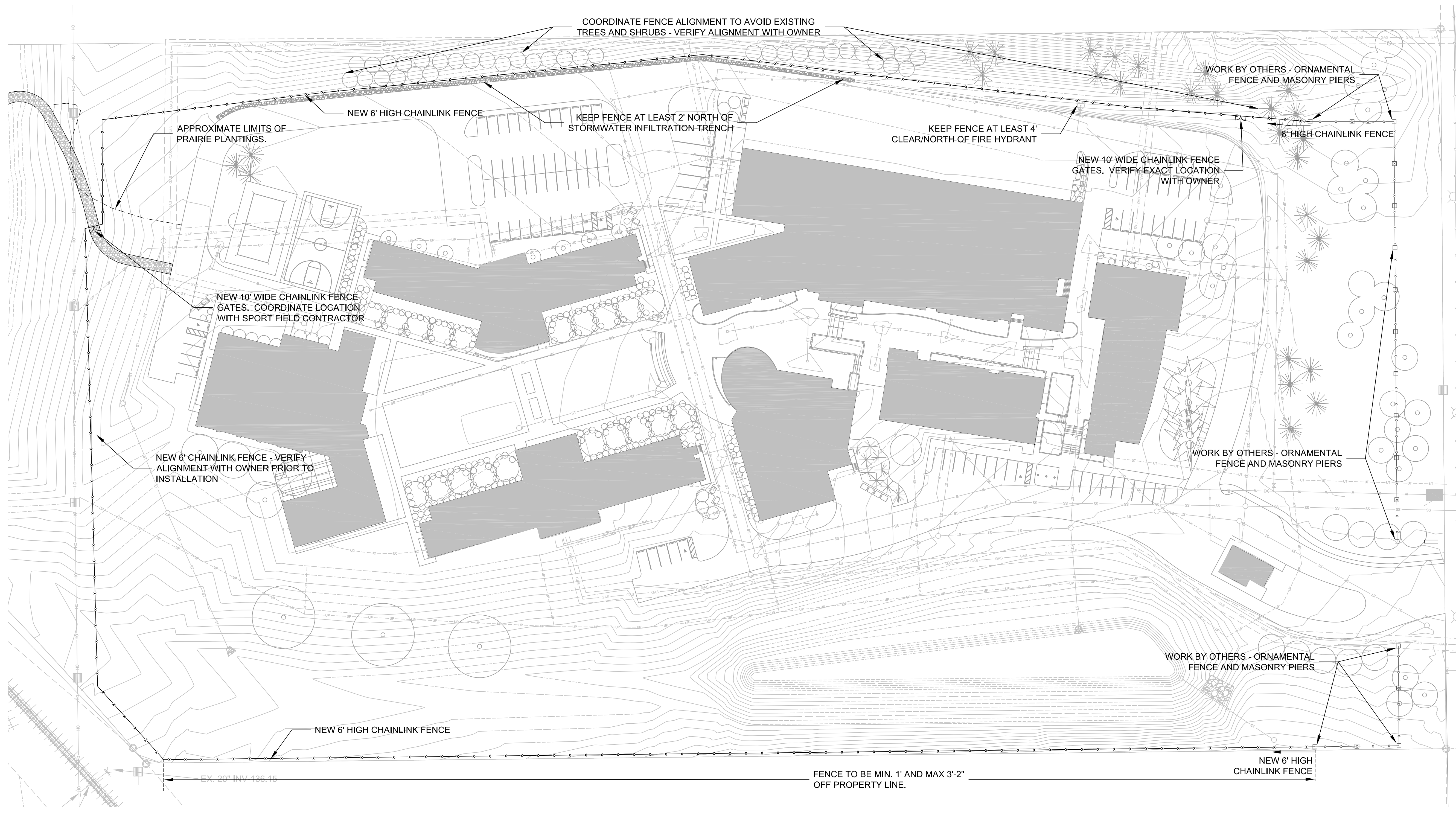


FENCE SECTION ELEVATION

2 CHAINLINK FENCE DETAILS

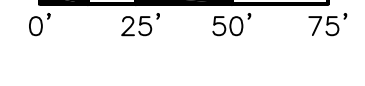
Scale: NOT TO SCALE

- CHAINLINK FENCE NOTES:**
- FENCING FABRIC TO BE PERMAFUSED II POLYOLEFIN FUSED AND ADHERED TO ZINC-COATED STEEL WIRE PER ASTM F 668 CLASS 2B. 9 GAUGE. 2 INCH MESH WITH TWISTED TOP AND KNUCKLED BOTTOM SELVAGE - COLORED BLACK.
 - FITTINGS SHALL HAVE PERMAFUSED II COATING, 6 MILS MINIMUM - COLOR BLACK, OVER HOT-DIPPED GALVANIZED PRESSED STEEL.
 - FRAMEWORK TO BE PERMAFUSED II POLYOLEFIN, 10 MILS MINIMUM - COLOR BLACK, OVER GALVANIZED STEEL ASTM F 1043, GROUP 1C, WITH MINIMUM YIELD STRENGTH OF 50,000 PSI. PROTECTIVE COATING PER ASTM F 1043, EXTERNAL COATING TYPE B, ZINC WITH ORGANIC OVERCOAT, 0.9 OUNCES PER SQUARE FOOT MINIMUM ZINC COATING WITH CHROMATE CONVERSION COATING AND VERIFIABLE POLYMER FILM.
 - TOP RAILS - 1-5/8" O.D. PERMAFUSED II DQ 40 PIPE (0.111" WALL THICKNESS, 1.83 LB./FT.)
 - LINE POSTS - 2-3/8" O.D. PERMAFUSED II DQ 40 PIPE (0.130" WALL THICKNESS, 3.12 LB./FT.)
 - TERMINAL POSTS - 2-7/8" O.D. PERMAFUSED II DQ 40 PIPE (0.160" WALL THICKNESS, 4.64 LB./FT.)
 - PROVIDE 3000 PSI CONCRETE FOOTING TO THE DIMENSIONS SHOWN ON THE DETAILS.



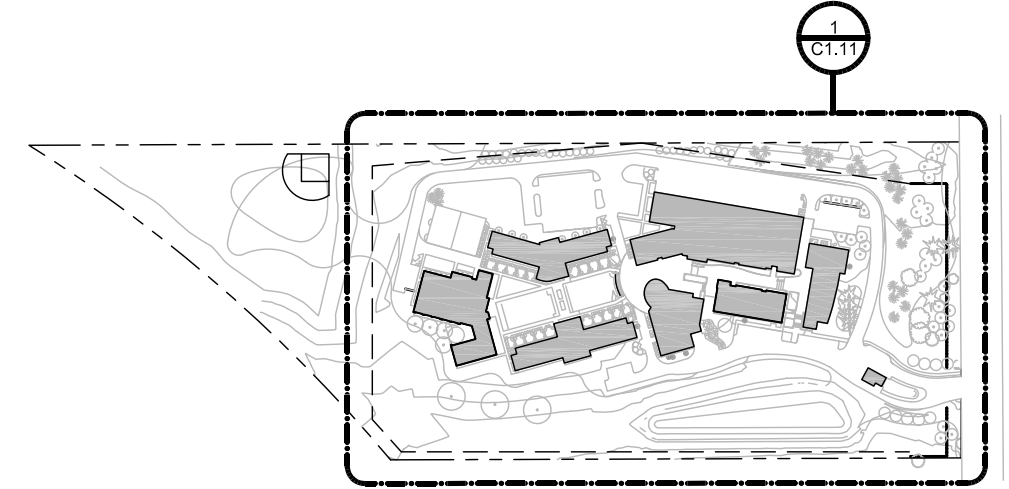
1 SITE PLAN

Scale: 1" = 50'



GENERAL WORK NOTES:

- SITE SAFETY SHALL BE THE SOLE RESPONSIBILITY OF THE CONTRACTOR.
- CONTRACTOR SHALL CONFINE HIS SITE WORK TO THE MINIMUM DISTURBANCE REQUIRED TO COMPLETE THE WORK.
- THE CONTRACTOR SHALL COORDINATE ALL REQUIRED CONSTRUCTION ACCESS ARRANGEMENTS, STAGING AREAS, AND ON-SITE MATERIAL STORAGE AREAS WITH THE FACILITY OWNER AND OPERATOR PRIOR TO CONSTRUCTION.
- ALL AREAS WHICH ARE DAMAGED DURING CONSTRUCTION SHALL BE RESTORED TO PRE CONSTRUCTION CONDITION BY THE CONTRACTOR AT HIS EXPENSE.
- THE FACILITY WILL CONTINUE THEIR ON-SITE OPERATIONS DURING CONSTRUCTION. THE CONTRACTOR SHALL COORDINATE ALL ON-SITE WORK WITH THE FACILITY OWNER AND OPERATOR AND MINIMIZE ANY DISRUPTIONS TO THEIR OPERATIONS.
- THE CONTRACTOR SHALL VERIFY THE VERTICAL CLEARANCE REQUIREMENTS OF OVERHEAD UTILITIES, GATES, AND STRUCTURES PRIOR TO BIDDING ON THIS PROJECT. THE CONTRACTOR SHALL CONTACT THE OWNER OF OVERHEAD UTILITIES TO DETERMINE ANY WORK RESTRICTIONS AROUND THEIR FACILITIES.
- CONTRACTOR TO STAKE OUT ENTIRE FENCE ALIGNMENT FOR OWNERS REVIEW AND APPROVAL PRIOR TO INSTALLATION.
- FENCING MANUFACTURER AND MATERIALS TO BE APPROVED BY OWNER PRIOR TO INSTALLATION.
- MATERIALS AND INSTALLATION IN ACCORDANCE WITH CLFMI PRODUCT MANUAL, ASTM F567 AND FENCE MANUFACTURER'S INSTALLATION SPECIFICATIONS.
- AT BOTH LOCATIONS WHERE CHAINLINK FENCE MEETS THE MASONRY PIERS (EAST TERMINI) - COORDINATE SETTING OF FENCE POLES WITH MASONRY PIER FOOTING CONTRACTOR. CONNECT FENCE FOOTING TO MASONRY PIER FOOTING VIA DRILLED DOWEL AND EPOXY OR OTHER METHOD AS APPROVED BY OWNER.
- MASONRY PIER FOUNDATIONS SHALL NOT BE BACKFILLED UNTIL AFTER FENCE FOOTING HAS BEEN PLACED.
- THE CONTRACTOR IS REQUIRED TO CALL DIGGER'S HOTLINE (1-800-242-8511) FOR LOCATIONS OF ALL UTILITIES NOT LESS THAN THREE WORKING DAYS PRIOR TO THE COMMENCEMENT OF ANY EXCAVATION. THE CONTRACTOR SHALL HAVE ALL UTILITIES NOT MARKED THROUGH DIGGER'S HOTLINE, LOCATED AND MARKED BY A PRIVATE UTILITY LOCATING FIRM. THE CONTRACTOR SHALL MAINTAIN THE UTILITY LOCATION MARKINGS UNTIL THEY ARE NO LONGER NECESSARY. THE CONTRACTOR SHALL HAND DIG TO DETERMINE ACTUAL LOCATIONS AT ALL ADJACENT AND CROSSING UTILITIES THAT ARE SHOWN ON THE PLANS OR FIELD MARKED.
- THE CONTRACTOR SHALL COORDINATE WITH ALL UTILITY OWNERS PRIOR TO ANY EXCAVATION. ANY DAMAGE TO UTILITY LINES CAUSED BY THE CONTRACTOR SHALL BE REPAIRED AT THE CONTRACTOR'S EXPENSE.
- UTILITIES EXIST WITHIN AND ADJACENT TO THE CONSTRUCTION AREA. EXISTING UTILITY DATA IS BASED ON THE BEST INFORMATION AVAILABLE TO THE ENGINEER. THE OWNER AND ENGINEER NEITHER ASSUME NOR IMPLY ANY RESPONSIBILITY FOR THE ACCURACY OF THIS DATA. ALL EXISTING UTILITIES MAY NOT BE SHOWN AND THE ACTUAL LOCATIONS OF THE UTILITIES MAY VARY FROM THE LOCATIONS SHOWN ON THE PLANS.
- CONTRACTOR SHALL WARRANT ALL WORK INSTALLED, RESTORED AND REPLACED DUE TO DAMAGE FOR A PERIOD OF ONE (1) YEAR BEGINNING FROM THE DATE OF SUBSTANTIAL COMPLETION OF SAID WORK. PRINTED SIGNED COPIES OF MANUFACTURER'S WARRANTIES SHALL BE PRESENTED TO FACILITY OPERATOR PRIOR TO APPROVAL OF FINAL PAYMENT.



KEY PLAN

LEGEND

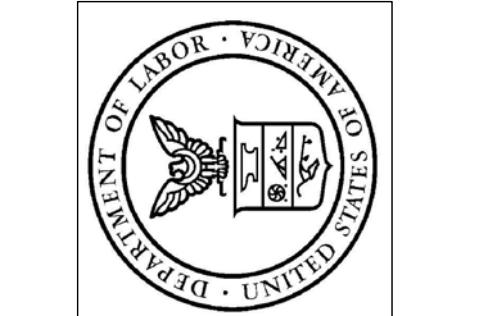
EX. SECTION CORNER FOUND	EX. SANITARY SEWER
EX. IRON PIPE FOUND	EX. STORM SEWER
EX. SANITARY MANHOLE	EX. WATER MAIN
EX. STORM MANHOLE	EX. UNDERGROUND GAS LINE
EX. CATCH BASIN	EX. OVERHEAD WIRES
EX. HYDRANT	EX. FENCE LINE
EX. WATER VALVE	EX. RETAINING WALL
EX. POWER POLE	EX. TREE LINE
EX. GUY WIRE	EX. DITCH LINE
EX. ELECTRIC MANHOLE	EX. RAILROAD
EX. LIGHT POLE	EX. 5-FOOT CONTOUR LINE
EX. SIGN	EX. 1-FOOT CONTOUR LINE
EX. DECIDUOUS TREE	NEW FENCE

CONTINUUM
ARCHITECTS + PLANNERS, LLC
P.O. BOX 510663
MILWAUKEE, WI 53201
T 414.230.9440
F 414.230.9995

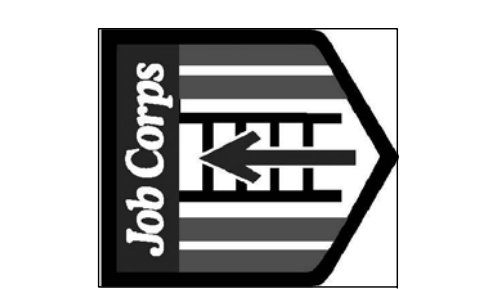
CONSULTANT:

BLOOM
COMPANIES, LLC
Infrastructure Environmental Agency
10501 W. Research Drive • Milwaukee, WI 53220
Phone (414) 771-3390 Fax (414) 771-4490

MILWAUKEE
JOB CORPS CENTER
N. 60TH STREET
MILWAUKEE, WI 532XX



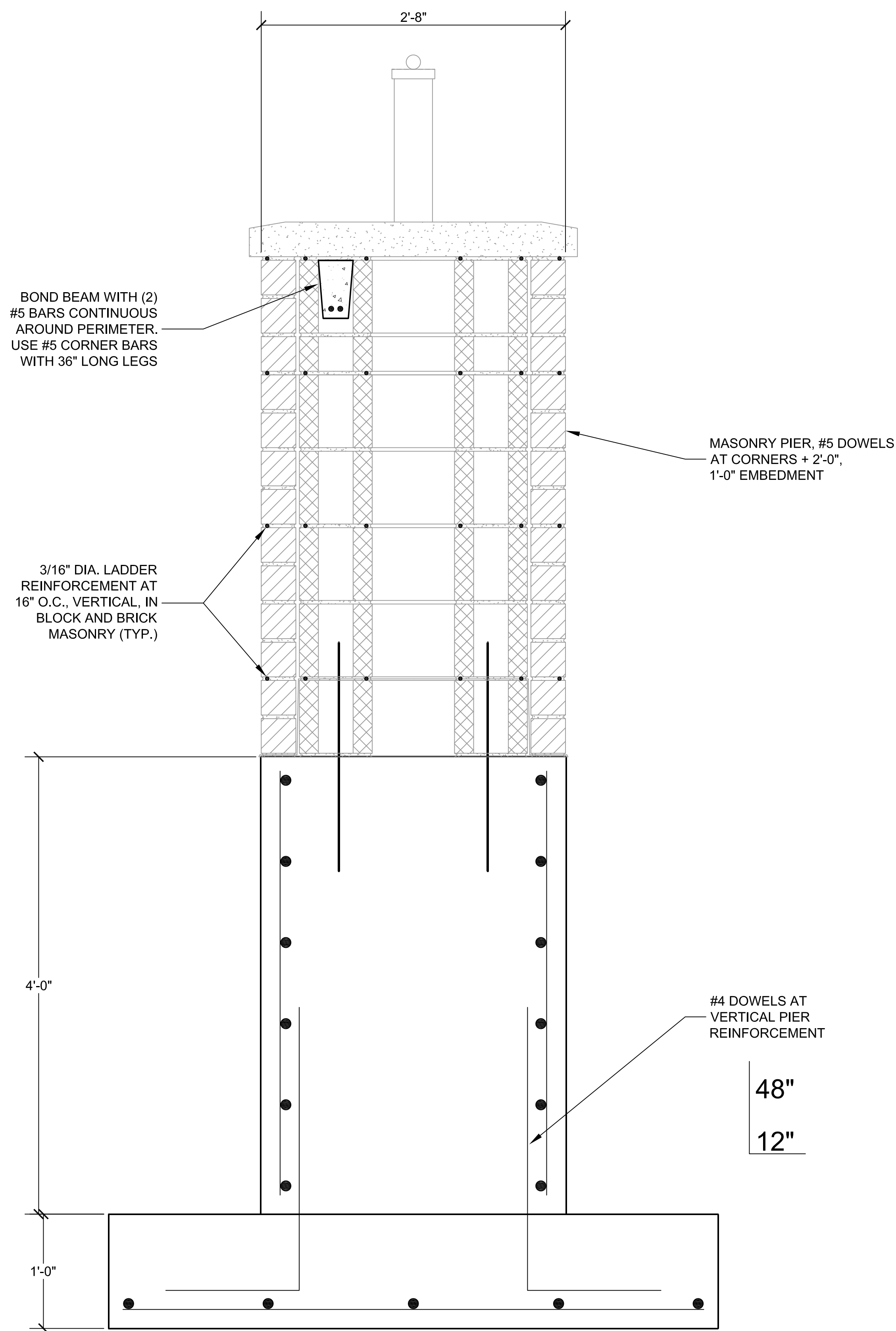
DEPARTMENT OF LABOR
OFFICE OF JOB CORPS



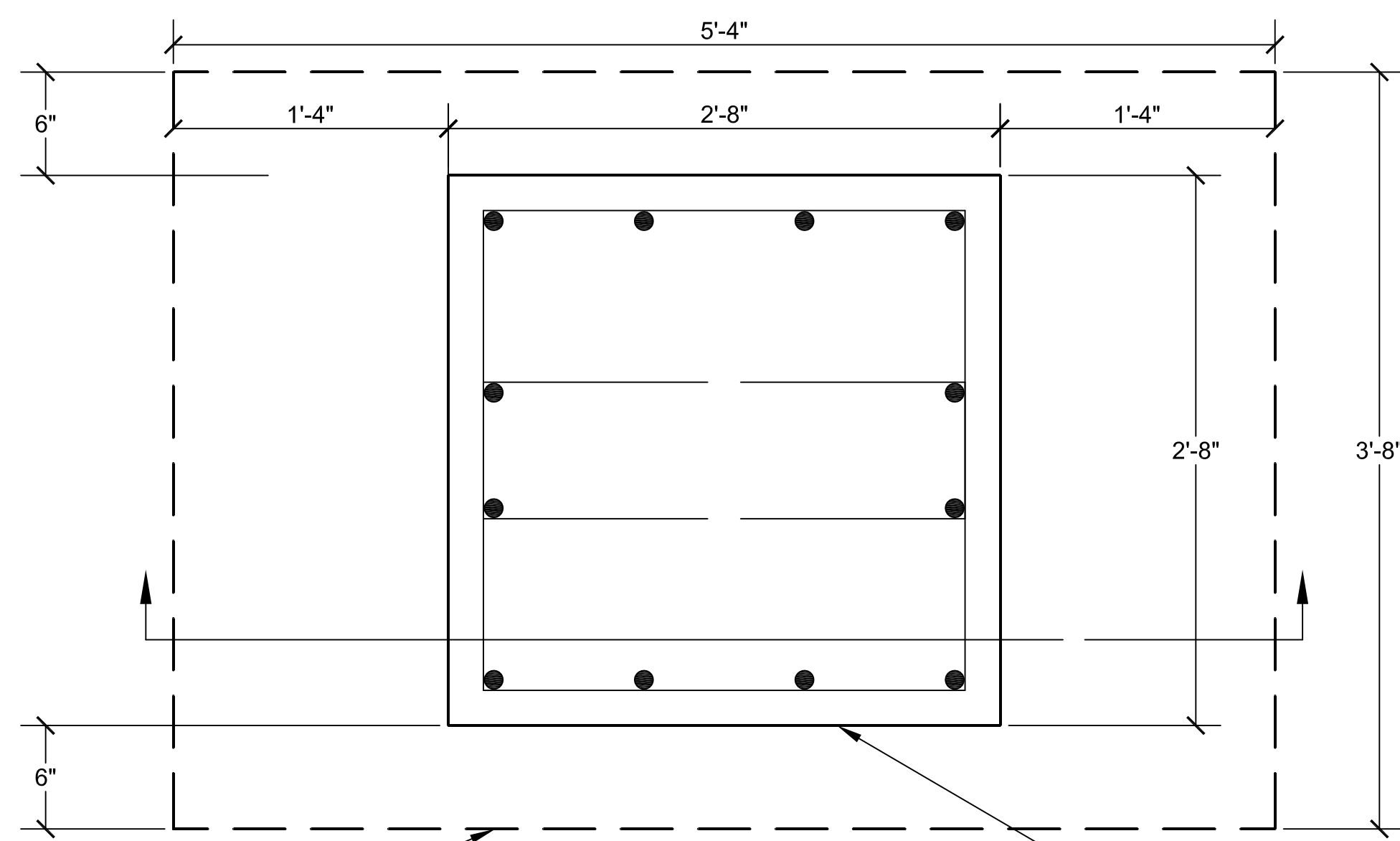
Remarks:	
Date:	
Issue:	
Remarks:	
Date:	
Issue:	

DEPARTMENT OF LABOR
MILWAUKEE JOB CORPS CENTER
CIVIL SITE - CHAINLINK FENCE PLAN
SCALE: AS SHOWN

PROJECT#: BM1-1054A
DATE: 08/14/2011
ISSUE: CONSTRUCTION PLAN



3 SECTION DETAIL - CONCRETE PIER AND FOOTING
Scale: 1 1/2" = 1'-0"

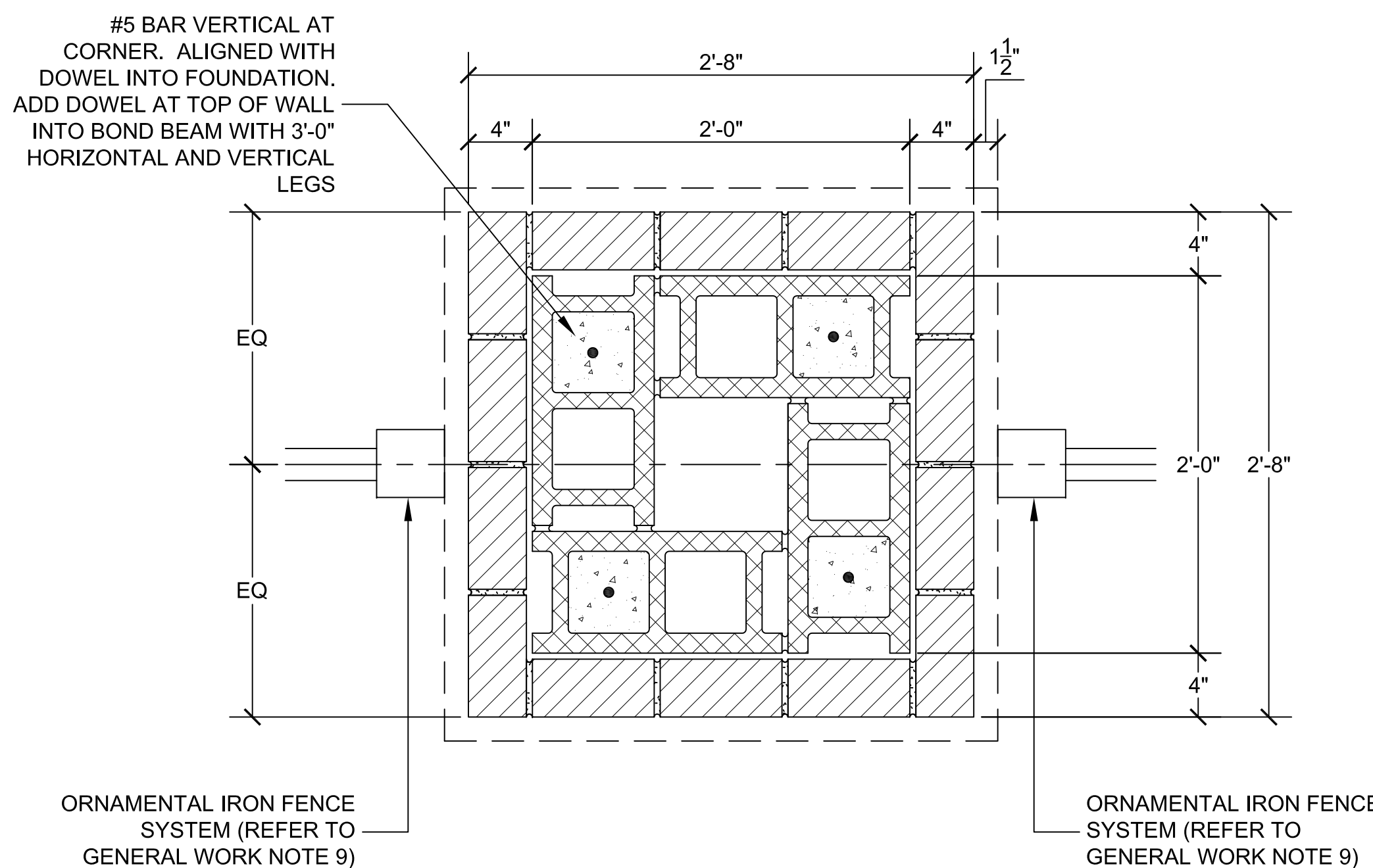


4 SECTION DETAIL @ MASONRY PIER
Scale: 1 1/2" = 1'-0"

5'-4" x 3'-8" x 1'-0" POURED CONCRETE FOOTING WITH (4) #5 BARS LONG DIRECTION AND (5) #5 BARS SHORT DIRECTION

POURED CONCRETE PIER WITH #4 BARS VERTICAL AS SHOWN (APPROX. 9" O.C.) AND #3 TIES AT 10" O.C.

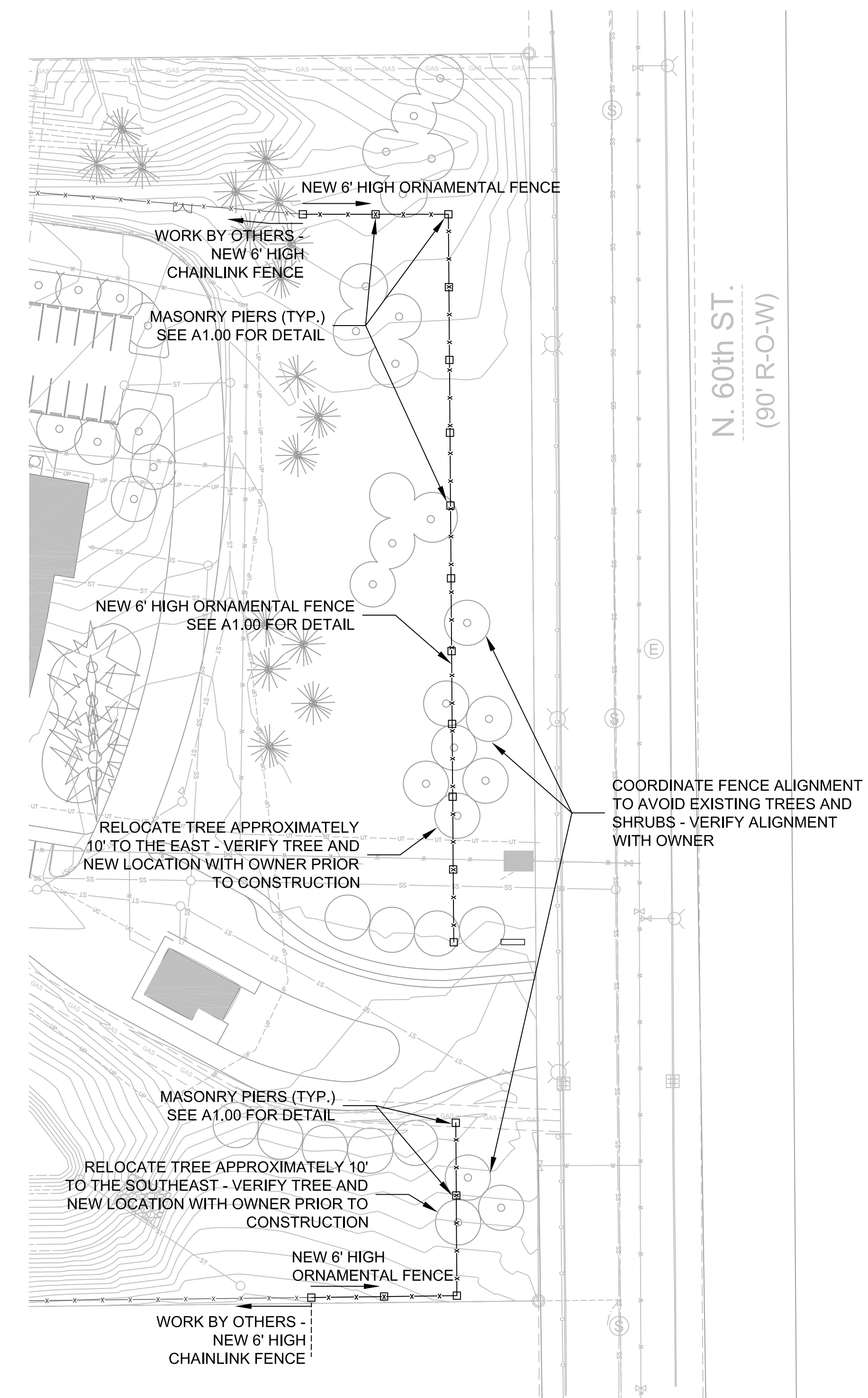
MASONRY PIER FOOTING NOTES:
1. FOOTINGS SHALL BE CAST ON UNDISTURBED SUBSOIL. A PRESUMPTIVE BEARING PRESSURE OF 2000 PSF WAS USED FOR DESIGN OF THE FOUNDATION. IF THIS DESIGN CAPACITY IS NOT ENCOUNTERED AT ELEVATIONS SHOWN, FOOTINGS MUST BE LOWERED. VALIDATION OF SOIL BEARING CAPACITY MUST BE PERFORMED BY GEOTECHNICAL ENGINEER (I.E. POKET PENETROMETER) AND REPORT SUBMITTED TO DESIGNER OF RECORD.



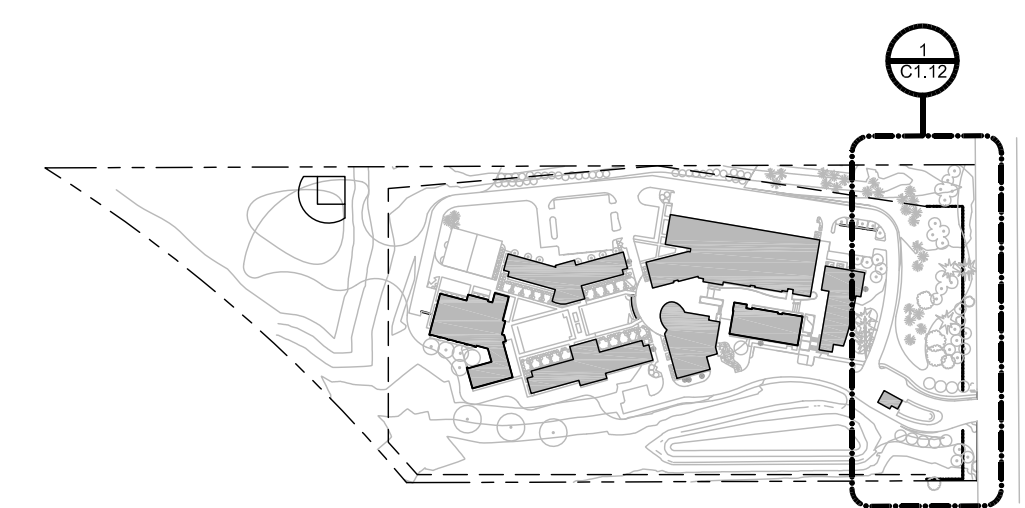
2 SECTION DETAIL @ MASONRY PIER
Scale: 1 1/2" = 1'-0"

GENERAL WORK NOTES:

- SITE SAFETY SHALL BE THE SOLE RESPONSIBILITY OF THE CONTRACTOR.
- CONTRACTOR SHALL CONFINE HIS SITE WORK TO THE MINIMUM DISTURBANCE REQUIRED TO COMPLETE THE WORK.
- THE CONTRACTOR SHALL COORDINATE ALL REQUIRED CONSTRUCTION ACCESS ARRANGEMENTS, STAGING AREAS, AND ON-SITE MATERIAL STORAGE AREAS WITH THE FACILITY OWNER AND OPERATOR PRIOR TO CONSTRUCTION.
- ALL AREAS WHICH ARE DAMAGED DURING CONSTRUCTION SHALL BE RESTORED TO PRE CONSTRUCTION CONDITION BY THE CONTRACTOR AT HIS EXPENSE.
- THE FACILITY WILL CONTINUE THEIR ON-SITE OPERATIONS DURING CONSTRUCTION. THE CONTRACTOR SHALL COORDINATE ALL ON-SITE WORK WITH THE FACILITY OWNER AND OPERATOR AND MINIMIZE ANY DISRUPTIONS TO THEIR OPERATIONS.
- THE CONTRACTOR SHALL VERIFY THE VERTICAL CLEARANCE REQUIREMENTS OF OVERHEAD UTILITIES, GATES, AND STRUCTURES PRIOR TO BIDDING ON THIS PROJECT. THE CONTRACTOR SHALL CONTACT THE OWNER OF OVERHEAD UTILITIES TO DETERMINE ANY WORK RESTRICTIONS AROUND THEIR FACILITIES.
- CONTRACTOR TO STAKE OUT ENTIRE FENCE ALIGNMENT FOR OWNERS REVIEW AND APPROVAL PRIOR TO INSTALLATION.
- FENCING MANUFACTURER AND MATERIALS TO BE APPROVED BY OWNER PRIOR TO INSTALLATION.
- AT ALL PIER LOCATIONS - COORDINATE SETTING OF FENCE POLES WITH ALL FENCE CONTRACTORS. CONNECT FENCE FOOTING TO MASONRY PIER FOOTING VIA DRILLED DOWEL AND EPOXY OR OTHER METHOD AS APPROVED BY OWNER.
- COORDINATE BACKFILL WITH ALL FENCING CONTRACTORS. MASONRY PIER FOUNDATION SHALL NOT BE BACKFILLED UNTIL AFTER FENCE FOOTINGS HAVE BEEN PLACED.
- BACKFILL WITH SAND, A MIXTURE OF SAND AND GRAVEL, CRUSHED GRAVEL, CRUSHED STONE, CRUSHED CONCRETE OR OTHER FRAGMENTED MINERAL MATERIAL. THE MAXIMUM MATERIAL SIZE USED SHALL HAVE 100 PERCENT PASS A 3-INCH SIEVE, NOT LESS THAN 25 PERCENT BY WEIGHT PASSES A NO. 4 SIEVE AND OF THE MATERIAL PASSING THE NO. 4, NOT MORE THAN 15 PERCENT PASSES A NO. 200 SIEVE. COMPACT TO 95 PERCENT MODIFIED PROCTOR PER ASTM D6938.
- THE CONTRACTOR IS REQUIRED TO CALL DIGGER'S HOTLINE (1-800-242-8511) FOR LOCATIONS OF ALL UTILITIES NOT LESS THAN THREE WORKING DAYS PRIOR TO THE COMMENCEMENT OF ANY EXCAVATION. THE CONTRACTOR SHALL HAVE ALL UTILITIES, NOT MARKED THROUGH DIGGER'S HOTLINE, LOCATED AND MARKED BY A PRIVATE UTILITY LOCATING FIRM. THE CONTRACTOR SHALL MAINTAIN THE UTILITY LOCATION MARKINGS UNTIL THEY ARE NO LONGER NECESSARY. THE CONTRACTOR SHALL HAND DIG TO DETERMINE ACTUAL LOCATIONS AT ALL ADJACENT AND CROSSING UTILITIES THAT ARE SHOWN ON THE PLANS OR FIELD MARKED.
- THE CONTRACTOR SHALL COORDINATE WITH ALL UTILITY OWNERS PRIOR TO ANY EXCAVATION. ANY DAMAGE TO UTILITY LINES CAUSED BY THE CONTRACTOR SHALL BE REPAIRED AT THE CONTRACTOR'S EXPENSE.
- UTILITIES EXIST WITHIN AND ADJACENT TO THE CONSTRUCTION AREA. EXISTING UTILITY DATA IS BASED ON THE BEST INFORMATION AVAILABLE TO THE ENGINEER. THE OWNER AND ENGINEER NEITHER ASSUME NOR IMPLY ANY RESPONSIBILITY FOR THE ACCURACY OF THIS DATA. ALL EXISTING UTILITIES MAY NOT BE SHOWN AND THE ACTUAL LOCATIONS OF THE UTILITIES MAY VARY FROM THE LOCATIONS SHOWN ON THE PLANS.
- CONTRACTOR SHALL WARRANT ALL WORK INSTALLED, RESTORED AND REPLACED DUE TO DAMAGE FOR A PERIOD OF ONE (1) YEAR BEGINNING FROM THE DATE OF SUBSTANTIAL COMPLETION OF SAID WORK. PRINTED SIGNED COPIES OF MANUFACTURER'S WARRANTIES SHALL BE PRESENTED TO FACILITY OPERATOR PRIOR TO APPROVAL OF FINAL PAYMENT.



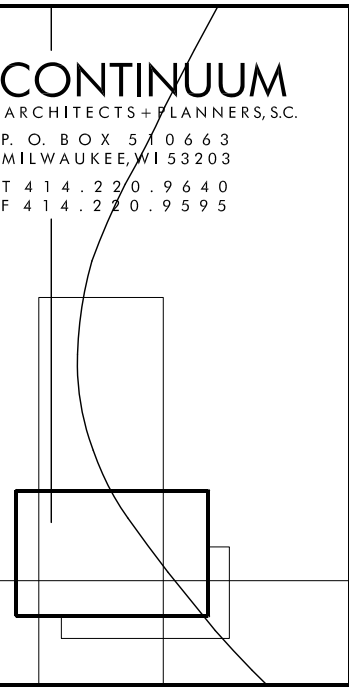
1 SITE PLAN
Scale: 1" = 50'-0"
0' 25' 50' 75'



KEY PLAN

LEGEND

	EX. SECTION CORNER FOUND		EX. SANITARY SEWER
	EX. IRON PIPE FOUND		EX. STORM SEWER
	EX. SANITARY MANHOLE		EX. WATER MAIN
	EX. STORM MANHOLE		EX. UNDERGROUND GAS LINE
	EX. CATCH BASIN		EX. OVERHEAD WIRES
	EX. HYDRANT		EX. FENCE LINE
	EX. WATER VALVE		EX. RETAINING WALL
	EX. POWER POLE		EX. TREE LINE
	EX. GUY WIRE		EX. DITCH LINE
	EX. ELECTRIC MANHOLE		EX. RAILROAD
	EX. LIGHT POLE		EX. 5-FOOT CONTOUR LINE
	EX. SIGN		EX. 1-FOOT CONTOUR LINE
	EX. DECIDUOUS TREE		NEW FENCE



CONSULTANT:
BLOOM COMPANIES, LLC
Infrastructure Development Agency
10501 W. Research Drive • Milwaukee, WI 53220
Phone: (414) 771-3390 Fax: (414) 771-4490

MILWAUKEE
JOB CORPS CENTER
N. 80TH STREET
MILWAUKEE, WI 5322X



DEPARTMENT OF LABOR
OFFICE OF JOB CORPS

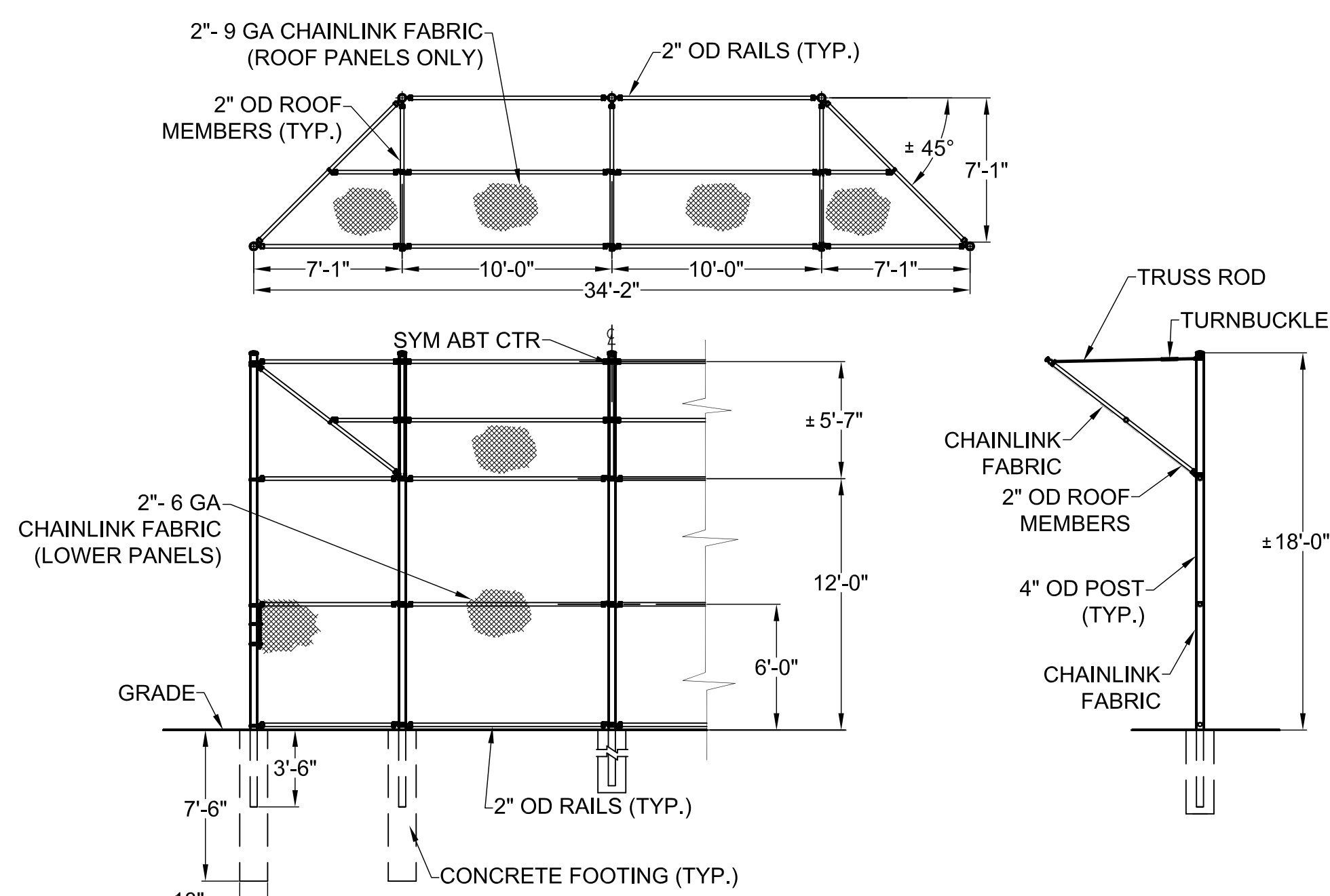
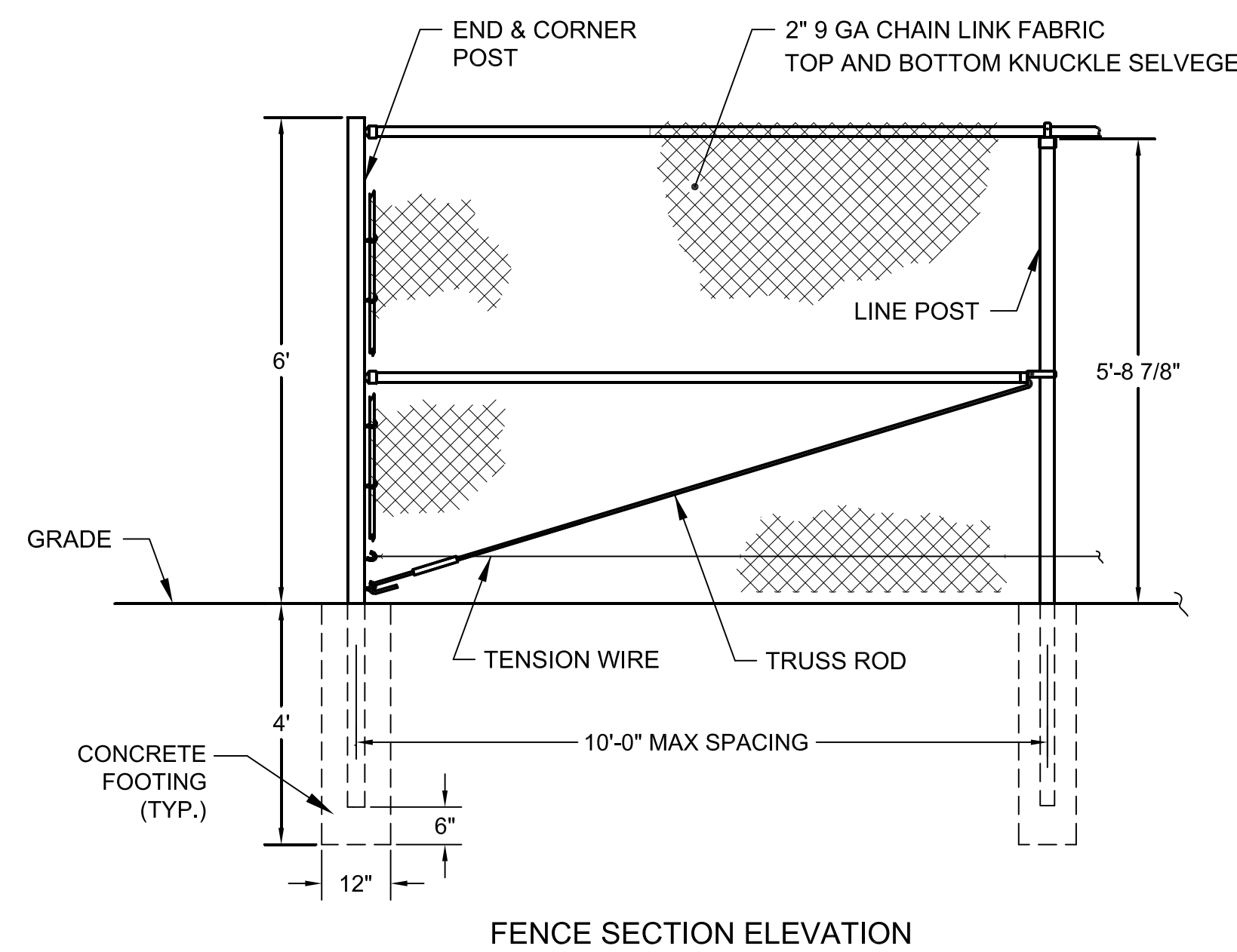


Remarks:	
Date:	
Issue:	
Remarks:	
Date:	
Issue:	

DEPARTMENT OF LABOR
MILWAUKEE JOB CORPS CENTER
CIVIL SITE - ORNAMENTAL FENCE PLAN
SCALE: AS SHOWN

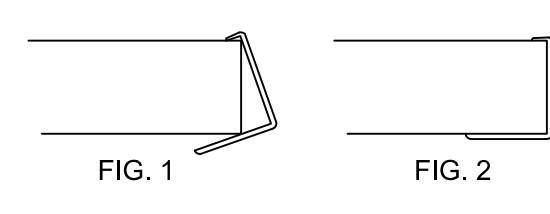
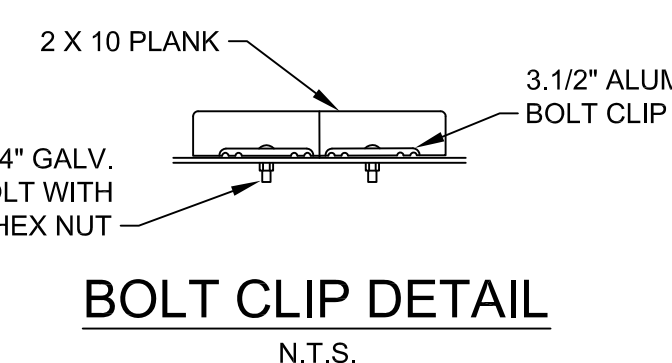
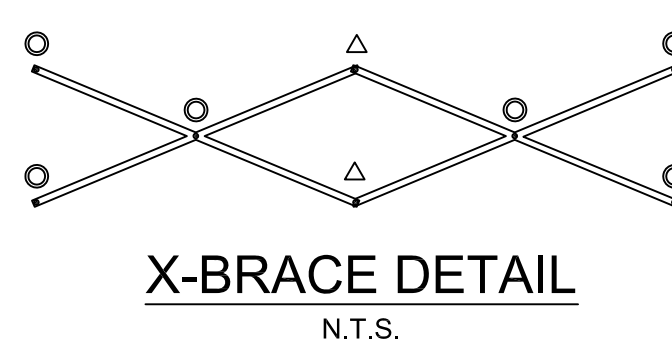
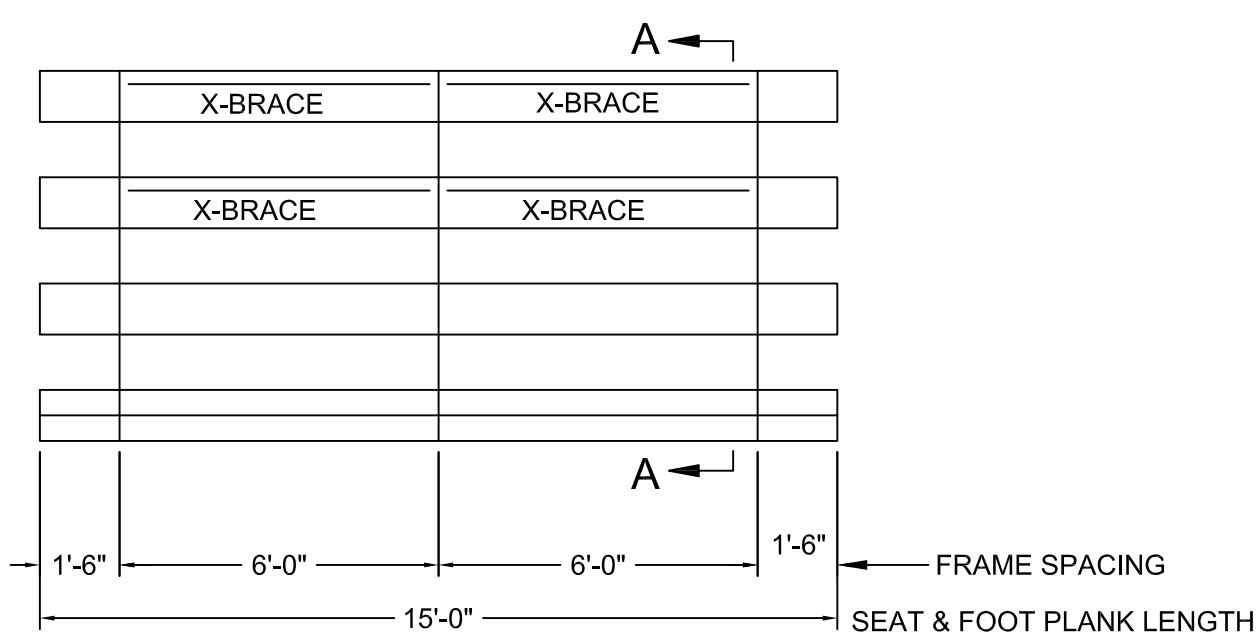
PROJECT#: BM1-1054A
DATE: 08/14/2011
ISSUE: CONSTRUCTION PLAN

C1.12



5 CHAINLINK BACKSTOP AND FENCE DETAILS
Scale: NOT TO SCALE

- CHAINLINK FENCE NOTES:
- FENCING FABRIC TO BE PERMAFUSED II POLYOLEFIN FUSED AND ADHERED TO ZINC-COATED STEEL WIRE PER ASTM F 668 CLASS 2B. GAUGE AS SHOWN, 2 INCH MESH WITH KNUCKLED TOP AND BOTTOM SELVEGE - COLORED BLACK.
 - FITTINGS SHALL HAVE PERMAFUSED II COATING, 6MILS MINIMUM - COLOR BLACK, OVER HOT-DIPPED GALVANIZED PRESSED STEEL.
 - FRAMEWORK TO BE PERMAFUSED II POLYOLEFIN, 10 MILS MINIMUM - COLOR BLACK, OVER GALVANIZED STEEL ASTM F 1043, GROUP 1C, WITH MINIMUM YIELD STRENGTH OF 50,000 PSI. PROTECTIVE COATING PER ASTM F 1043, EXTERNAL COATING TYPE B, ZINC WITH ORGANIC OVERCOAT, 0.9 OUNCES PER SQUARE FOOT MINIMUM ZINC COATING WITH CHROMATE CONVERSION COATING AND VERIFIABLE POLYMER FILM.
 - TOP RAILS - 1-5/8" O.D. PERMAFUSED II DQ 40 PIPE (0.111" WALL THICKNESS, 1.83 LB./FT.)
 - LINE POSTS - 2-3/8" O.D. PERMAFUSED II DQ 40 PIPE (0.130" WALL THICKNESS, 3.12 LB./FT.)
 - TERMINAL POSTS - 2-7/8" O.D. PERMAFUSED II DQ 40 PIPE (0.160" WALL THICKNESS, 4.64 LB./FT.)
 - PROVIDE 3000 PSI CONCRETE FOOTING TO THE DIMENSIONS SHOWN ON THE DETAILS.



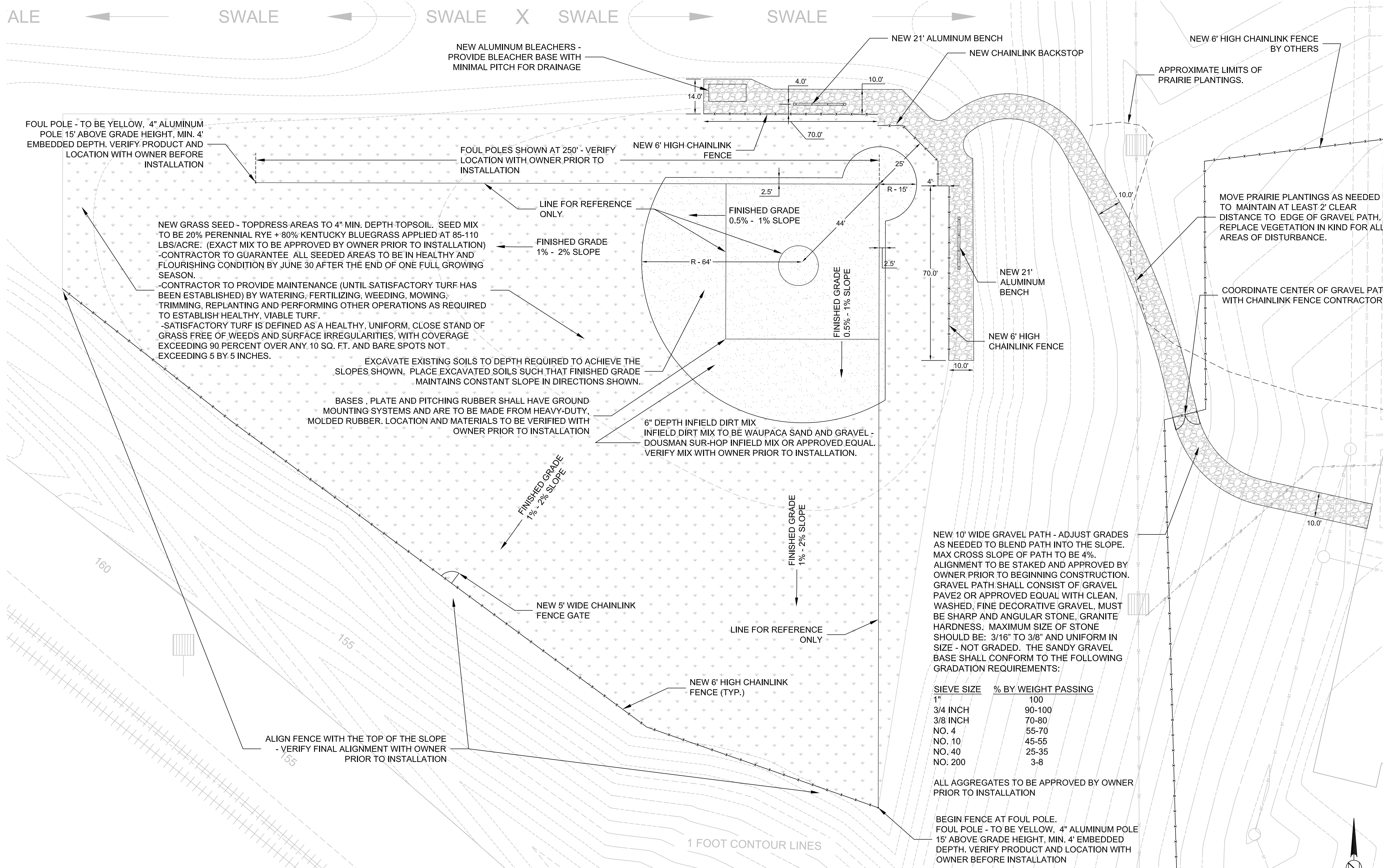
- LOCATE THE CHANNEL END CAP AS SHOWN IN FIG. 1.
- TAP END CAP INTO PLACE WITH RUBBER Mallet OR SOFT WOOD. FIG. 2
- DRILL TWO 5/32" HOLES THROUGH THE BOTTOM FLANGE AND THE BOTTOM OUTSIDE PLANK FLANGES. INSTALL TWO 3/16" DRIVE RIVETS (2 PER PLANK)

SECTION A-A
N.T.S.

END CAP DETAIL
N.T.S.

NOTE: THE BLEACHER SHALL BE 4 ROW 15' WIDE BY HIGHLAND PRODUCTS GROUP LLC OR APPROVED EQUAL.

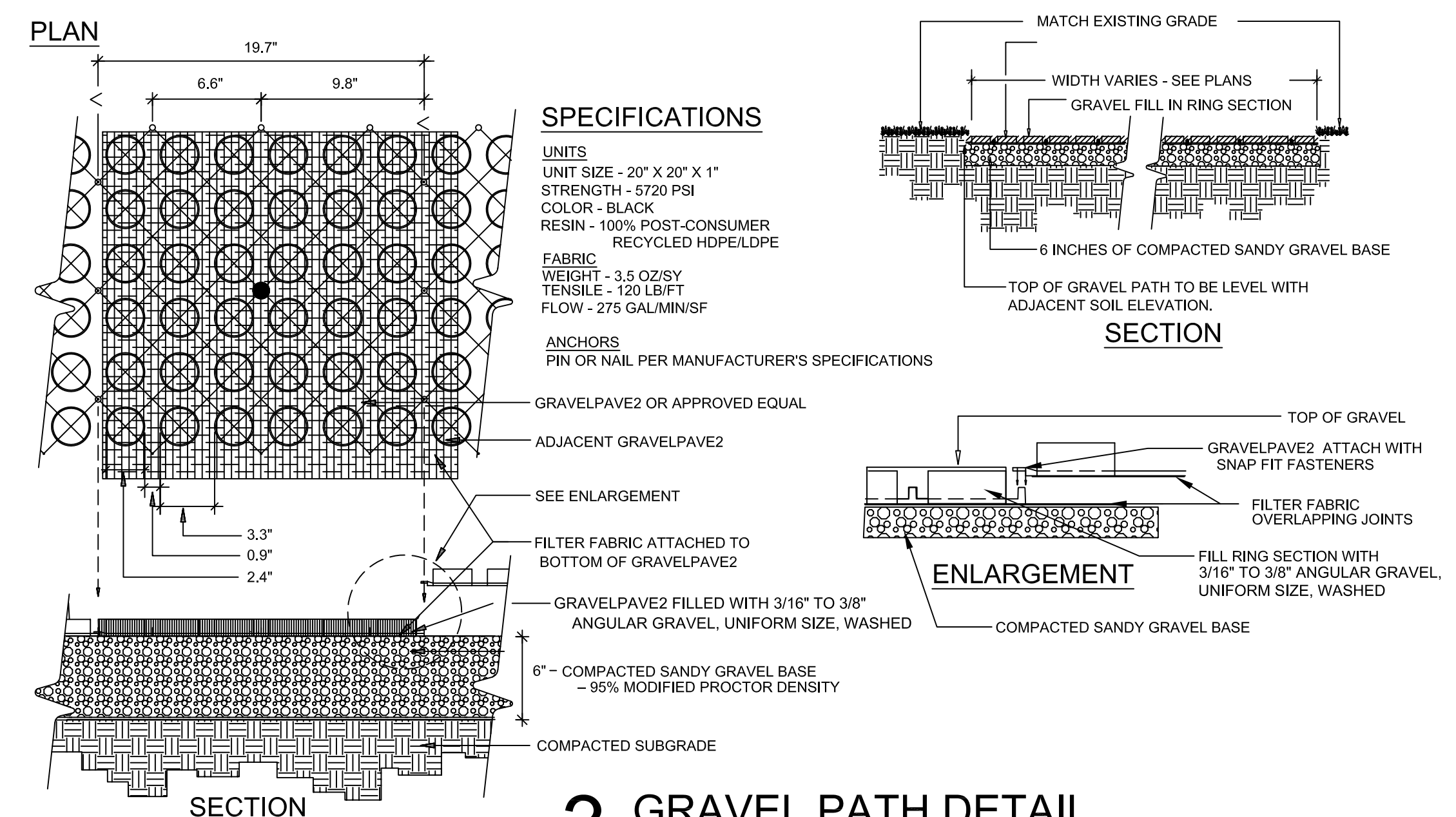
4 ALUMINUM BLEACHER DETAIL
Scale: NOT TO SCALE



SIEVE SIZE	% BY WEIGHT PASSING
1"	100
3/4 INCH	90-100
3/8 INCH	70-80
NO. 4	55-70
NO. 10	45-55
NO. 40	25-35
NO. 200	3-8

ALL AGGREGATES TO BE APPROVED BY OWNER PRIOR TO INSTALLATION

BEGIN FENCE AT FOUL POLE. FOUL POLE - TO BE YELLOW, 4" ALUMINUM POLE 15' ABOVE GRADE HEIGHT, MIN. 4' EMBEDDED DEPTH. VERIFY PRODUCT AND LOCATION WITH OWNER BEFORE INSTALLATION



- GENERAL WORK NOTES:**
- SITE SAFETY SHALL BE THE SOLE RESPONSIBILITY OF THE CONTRACTOR.
 - CONTRACTOR SHALL CONFINE HIS SITE WORK TO THE MINIMUM DISTURBANCE REQUIRED TO COMPLETE THE WORK.
 - THE CONTRACTOR SHALL COORDINATE ALL REQUIRED CONSTRUCTION ACCESS ARRANGEMENTS, STAGING AREAS, AND ON-SITE MATERIAL STORAGE AREAS WITH THE FACILITY OWNER AND OPERATOR PRIOR TO CONSTRUCTION.
 - ALL AREAS WHICH ARE DAMAGED DURING CONSTRUCTION SHALL BE RESTORED TO PRE CONSTRUCTION CONDITION BY THE CONTRACTOR AT HIS EXPENSE.
 - THE FACILITY OWNER AND OPERATOR WILL CONTINUE THEIR ON-SITE OPERATIONS DURING CONSTRUCTION. THE CONTRACTOR SHALL COORDINATE ALL ON-SITE WORK WITH THE FACILITY OWNER AND OPERATOR AND MINIMIZE ANY DISRUPTIONS TO THEIR OPERATIONS.
 - THE CONTRACTOR SHALL VERIFY THE VERTICAL CLEARANCE REQUIREMENTS OF OVERHEAD UTILITIES, GATES, AND STRUCTURES PRIOR TO BIDDING ON THIS PROJECT. THE CONTRACTOR SHALL CONTACT THE OWNER OF OVERHEAD UTILITIES TO DETERMINE ANY WORK RESTRICTIONS AROUND THEIR FACILITIES.
 - CONTRACTOR TO STAKE OUT ENTIRE FENCE ALIGNMENT FOR OWNERS REVIEW AND APPROVAL PRIOR TO INSTALLATION.
 - ALL MATERIALS AND EQUIPMENT TO BE APPROVED BY OWNER PRIOR TO INSTALLATION.
 - MATERIALS AND INSTALLATION IN ACCORDANCE WITH CLFMI PRODUCT MANUAL, ASTM F567 AND MANUFACTURER'S SPECIFICATIONS.
 - THE CONTRACTOR IS REQUIRED TO CALL DIGGER'S HOTLINE (1-800-242-8511) FOR LOCATIONS OF ALL UTILITIES NOT LESS THAN THREE WORKING DAYS PRIOR TO THE COMMENCEMENT OF ANY EXCAVATION. THE CONTRACTOR SHALL HAVE ALL UTILITIES NOT MARKED THROUGH DIGGER'S HOTLINE, LOCATED AND MARKED BY A PRIVATE UTILITY LOCATING FIRM. THE CONTRACTOR SHALL MAINTAIN THE UTILITY LOCATION MARKINGS UNTIL THEY ARE NO LONGER NECESSARY. THE CONTRACTOR SHALL HAND DIG TO DETERMINE ACTUAL LOCATIONS AT ALL ADJACENT AND CROSSING UTILITIES THAT ARE SHOWN ON THE PLANS OR FIELD MARKED.
 - THE CONTRACTOR SHALL COORDINATE WITH ALL UTILITY OWNERS PRIOR TO ANY EXCAVATION. ANY DAMAGE TO UTILITY LINES CAUSED BY THE CONTRACTOR SHALL BE REPAIRED AT THE CONTRACTOR'S EXPENSE.
 - UTILITIES EXIST WITHIN AND ADJACENT TO THE CONSTRUCTION AREA. EXISTING UTILITY DATA IS BASED ON THE BEST INFORMATION AVAILABLE TO THE ENGINEER. THE OWNER AND ENGINEER NEITHER ASSUME NOR IMPLY ANY RESPONSIBILITY FOR THE ACCURACY OF THIS DATA. ALL EXISTING UTILITIES MAY NOT BE SHOWN AND THE ACTUAL LOCATIONS OF THE UTILITIES MAY VARY FROM THE LOCATIONS SHOWN ON THE PLANS.
 - CONTRACTOR SHALL WARRANT ALL WORK INSTALLED, RESTORED AND REPLACED DUE TO DAMAGE FOR A PERIOD OF ONE (1) YEAR BEGINNING FROM THE DATE OF SUBSTANTIAL COMPLETION OF SAID WORK UNLESS OTHERWISE STATED ON THE PLANS. PRINTED SIGNED COPIES OF MANUFACTURER'S WARRANTIES SHALL BE PRESENTED TO FACILITY OPERATOR PRIOR TO APPROVAL OF FINAL PAYMENT.

2 ALUMINUM BENCH DETAIL
Scale: NOT TO SCALE



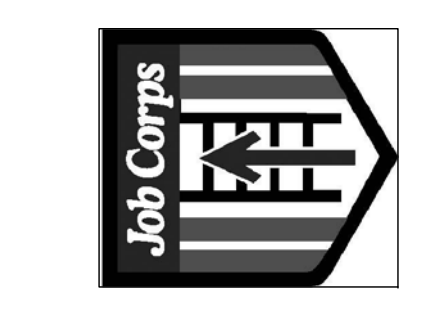
CONTINUUM ARCHITECTS + PLANNERS, LLC
F.O. 801 5/0 0 0 0 3
MILWAUKEE, WI 53203
T 414 230 9840
F 414 230 9993

CONSULTANT:
BLOOM COMPANIES, LLC
Infrastructure Development Agency
10501 W. Research Drive • Milwaukee, WI 53228
Phone (414) 771-3300 Fax (414) 771-4400

MILWAUKEE JOB CORPS CENTER
N. 60TH STREET
MILWAUKEE, WI 5322X



DEPARTMENT OF LABOR
OFFICE OF JOB CORPS



Remarks:	
Date:	
Issue:	
Remarks:	
Date:	
Issue:	

DEPARTMENT OF LABOR
MILWAUKEE JOB CORPS CENTER
CIVIL SITE - SPORT FIELD PLAN
SCALE: AS SHOWN

PROJECT#: BM1-1054A
DATE: 06/14/2011
ISSUE: CONSTRUCTION PLAN