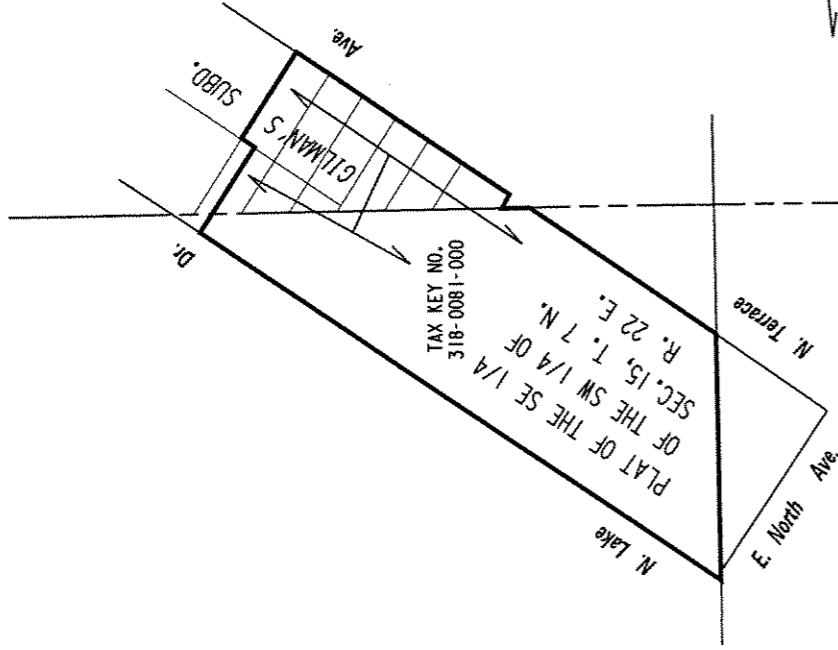


S.W. 1/4 SEC. 15, T.7N., R.22E.

319

S.E. 1/4 SEC. 15, T.7N., R.22E.

318



TAX KEY NO.  
318-0081-000

TAX KEY NO.  
318-0081-000

PLAT OF THE S.E. 1/4  
OF THE S.W. 1/4 OF  
SEC. 15, T. 7 N.  
R. 22 E.

(E. Bradford Ave.)  
GILMAN'S  
SUBDIVISION

1/4 SEC. LINE

70.89

3

164.66

124.45

35

58.39

36

84.25

58.39

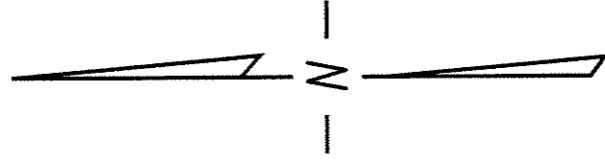
37

101.72

83.78

26.56

(80' R.O.W.)



334.35 (P.)

N. Terrace

SECTION LINE

376.39

E. North Ave.

PORTION OF PUBLIC  
STREET PROPOSED TO  
BE VACATED

EXHIBIT "A"

FILE NO. 040562

INFRASTRUCTURE SERVICES DIVISION

MILWAUKEE, WISCONSIN

ASSIGNED TO: P.A. VELLA

CH'K'D. BY: W.E. FUCHS

DRAWN BY: P.A.V.

DATE: JULY 5, 2005

PROJECT/GRANT NO.: WK52337198

SCALE: 1" = 60'

APPROVED BY:

*maria Lindholm*

CENTRAL DRAFTING & RECORDS MANAGER

*W. Fuchs*

CIVIL ENGINEER