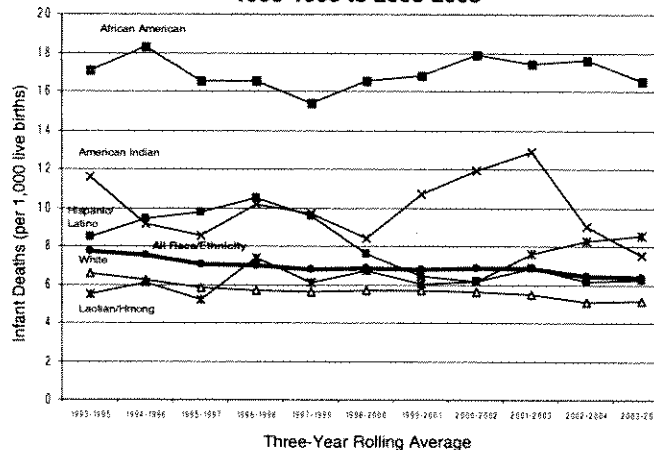


Wisconsin Healthy Birth Outcomes Initiative

Eliminating Racial and Ethnic Disparities

Department of Health and Family Services, Division of Public Health

Infant Mortality Rate by Race/Ethnicity, Wisconsin, 1993-1995 to 2003-2005



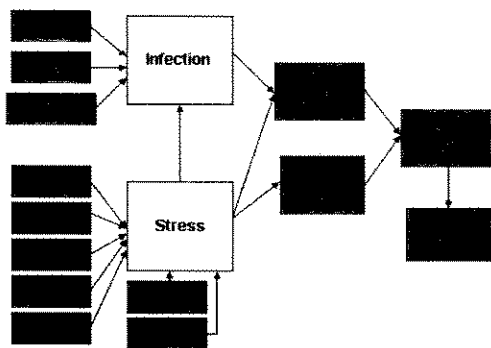
CALL TO ACTION

Elimination of health disparities constitutes an overarching goal of the state health plan, *Healthiest Wisconsin 2010*. Perhaps the most disturbing health disparity in Wisconsin is the persistent high death rate of infants born to African American women. Infants born to African American women in Wisconsin have been 3-4 times more likely to die before their first birthday than infants born to white women. Further, during the past 20 years, virtually no decline has occurred in Wisconsin's African American infant mortality rate. Compared to white infant mortality, disparities also exist among American Indian, Laotian/Hmong and Hispanic populations, although disparities are smaller than those of African Americans.

Infant mortality rates (the number of deaths during the first year of life per 1,000 live births in a population group) reflect a tragic loss of life to individuals, families, and the community. The magnitude of infant mortality also reflects broader social and economic conditions that affect maternal and infant health, including factors such as access to high-quality health care, education, poverty, and racism.

Pathways to Infant Mortality

Throughout a woman's life course, the persistent and cumulative result of social and environmental factors can have a detrimental effect on birth outcomes. This figure illustrates how potential risk factors can contribute to infection and stress, ultimately compromising the ability to have a healthy birth outcome.



Wisconsin Infant Mortality by Race and Ethnicity, 2003-2005

Mother's Race/Ethnicity	Number of Infant Deaths (less than 365 days)	Total Number of Live Births	Infant Mortality Rate per 1,000 Live Births	95% Confidence Interval	Black/White Disparity Ratio*
African American	324	19,620	16.5	14.7 - 18.3	3.2
American Indian	23	3,054	7.5	4.5 - 10.6	1.5
Hispanic	110	17,699	6.2	5.1 - 7.4	1.2
Laotian/Hmong	27	3,156	8.6	5.3 - 11.8	1.7
White	836	163,340	5.1	4.8 - 5.5	1.0
Other and Missing	23	4,194	5.5	3.3 - 7.7	1.1
All Selected	1,343	211,063	6.4	6.0 - 6.7	1.2

FRAMEWORK FOR ACTION

The Department of Health and Family Services is strengthening efforts to improve the maternal and child health of Wisconsin's racial/ethnic minority populations. We have developed a five-year strategic plan, *The Wisconsin Framework for Action to Eliminate Racial and Ethnic Disparities in Birth Outcomes*.

Four areas of emphasis are delineated for the next five years:

- Communication and outreach
- Quality improvement
- Community and evidence-based practices
- Using data to monitor trends and evaluate interventions



STRATEGIC PARTNERS

We are identifying key stakeholders and engaging a Statewide Advisory Committee to provide leadership, guidance, and assurance of success for all program activities including outreach, service delivery, and evaluation.

One focus of this initiative involves supporting the Milwaukee Health Department to implement *Empowering Families of Milwaukee*, a comprehensive home visiting program for pregnant and parenting mothers. In collaboration with key community organizations, this effort will center on target zip codes in the central city of Milwaukee with high rates and numbers of infant deaths, in order to eliminate racial and ethnic disparities.

FOR MORE INFORMATION

<http://dhfs.wisconsin.gov/healthybirths/>

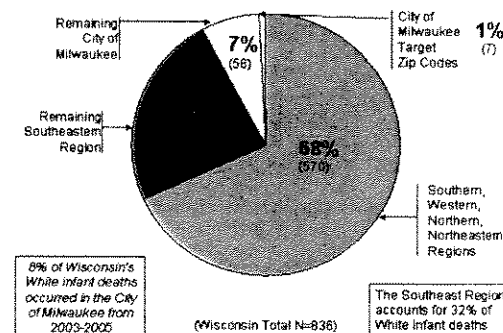
This site will be updated as this initiative progresses. Check often for the most current information about this initiative and to learn more about what health care providers, researchers, and the public can do to achieve healthy births for all Wisconsin families.

DATA CITATION

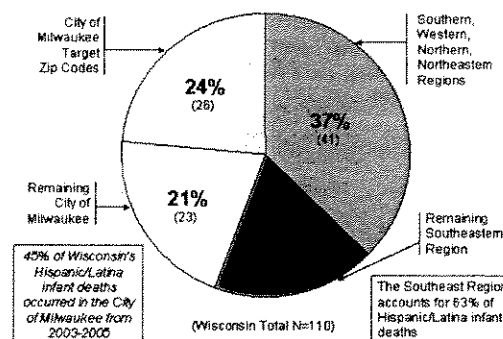
Wisconsin Department of Health and Family Services, Division of Public Health, Bureau of Health Information and Policy. Wisconsin Interactive Statistics on Health (WISH) data query system. <http://dhfs.wisconsin.gov/wish/index.htm>. Infant Mortality Module, accessed 4/2007.

Where is Infant Mortality Occurring in Wisconsin?

Geographical Contribution of White Infant Deaths, 2003-2005



Geographical Contribution of Hispanic/Latina Infant Deaths, 2003-2005



Geographical Contribution of African American Infant Deaths, 2003-2005

