

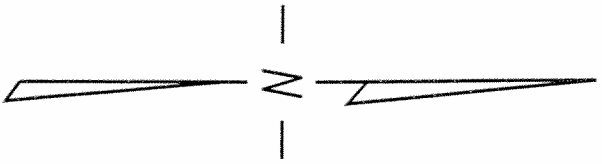
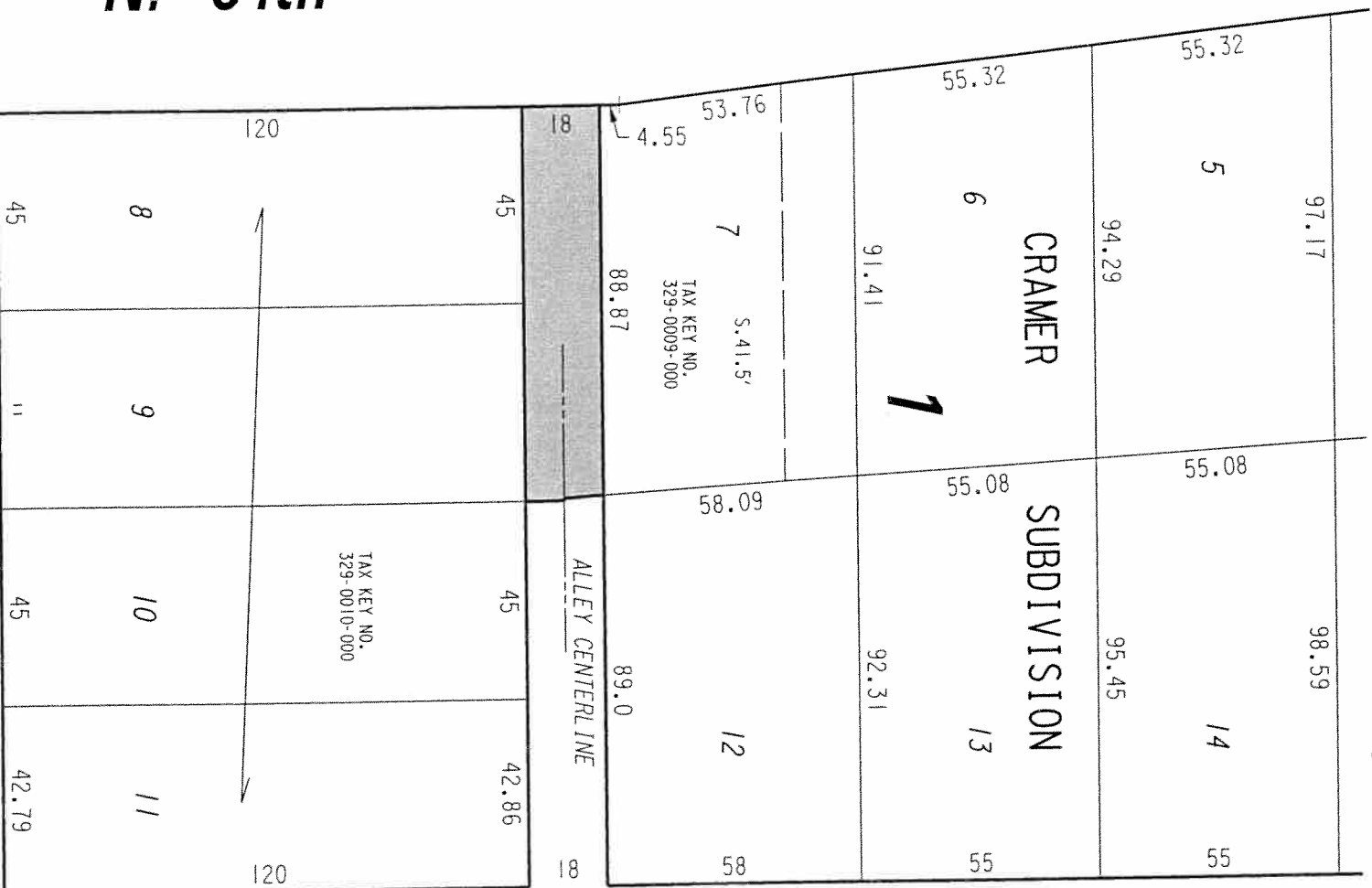
S.W. 1/4 SEC. 14, T.7N., R.21E.

329

(W. Meinecke Ave.)

St.

St.



SEC. LINE **W. North Ave.** (66' R.O.W.)



PORTION OF PUBLIC ALLEY PROPOSED TO BE VACATED

EXHIBIT "A" FILE NO. 080390

REVISSED: MARCH 16, 2009

LIMITS REVISED

INFRASTRUCTURE SERVICES DIVISION

MILWAUKEE, WISCONSIN

ASSIGNED TO: W.E. FUCHS CH'K'D. BY: W.E. FUCHS
 DRAWN BY: W.E.F. DATE: JULY 29, 2008
 PROJECT/GRANT NO.: WK52337268 SCALE: 1" = 40'
 APPROVED BY:

Maicia Dinkelacker
 CENTRAL DRAFTING & RECORDS MANAGER

AW
 ENGINEER