



CERTIFICATE OF APPROPRIATENESS APPLICATION FORM

Incomplete applications will not be processed for Commission review.

Please print legibly.

1. **HISTORIC NAME OF PROPERTY OR HISTORIC DISTRICT:** (if known)

Goldmans Department Store

ADDRESS OF PROPERTY:

930 W. Historic Mitchell

2. **NAME AND ADDRESS OF OWNER:**

Name(s): Phoenix Mitchell, LLC

Address: 1818 North Farwell

City: Milwaukee

State: WI

ZIP: 53202

Email:

Telephone number (area code & number) Daytime: 414-431-0021

Evening:

3. **APPLICANT, AGENT OR CONTRACTOR:** (if different from owner)

Name(s): Capital Heating and Cooling

Address: 16920 West Cleveland ave

City: New Berlin

State: WI

ZIP Code: 53151

Email: jason@capitalhc.com

Telephone number (area code & number) Daytime: 414-839-5717

Evening:

4. **ATTACHMENTS:** (Because projects can vary in size and scope, please call the HPC Office at 414-286-5712 for submittal requirements)

A. REQUIRED FOR MAJOR PROJECTS:

Photographs of affected areas & all sides of the building (annotated photos recommended)

Sketches and Elevation Drawings (1 full size and 1 reduced to 11" x 17" or 8 1/2" x 11")

A digital copy of the photos and drawings is also requested.

Material and Design Specifications (see next page)

B. NEW CONSTRUCTION ALSO REQUIRES:

Floor Plans (1 full size and 1 reduced to a maximum of 11" x 17")

Site Plan showing location of project and adjoining structures and fences

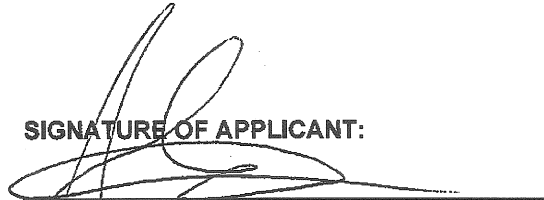
**PLEASE NOTE: YOUR APPLICATION CANNOT BE PROCESSED UNLESS
BOTH PAGES OF THIS FORM ARE PROPERLY COMPLETED
AND SIGNED.**

5. DESCRIPTION OF PROJECT:

Tell us what you want to do. Describe all proposed work including materials, design, and dimensions. Additional pages may be attached.

Install 6 Roof top unit on roof of building

6. SIGNATURE OF APPLICANT:



Signature

Jason Fox

Please print or type name

9/25/15

Date

This form and all supporting documentation **MUST** arrive by 12:00 noon on the deadline date established to be considered at the next Historic Preservation Commission Meeting. Any information not provided to staff in advance of the meeting will not be considered by the Commission during their deliberation. Please call if you have any questions and staff will assist you.

Hand Deliver or Mail Form to:
Historic Preservation Commission
City Clerk's Office
200 E. Wells St. Room B-4
Milwaukee, WI 53202

PHONE: (414) 286-5722

FAX: (414) 286-3004

www.milwaukee.gov/hpc

Or click the **SUBMIT** button to automatically email this form for submission.

SUBMIT

Unit Report For 12.5 Ton

Project: ~Untitled21
Prepared By:

06/20/2013
11:32AM

Unit Parameters

Unit Model:.....48TCFD14A3A5-0A0A0
Unit Size:.....14 (12.5 Tons)
Volts-Phase-Hertz:.....208-3-60
Heating Type:.....Gas
Duct Cfg:.....Vertical Supply / Vertical Return
High Heat
Round Tube Plate Fin Coils

Dimensions (ft. in.) & Weight (lb.) ***

Unit Length:.....7' 4.125"
Unit Width:.....4' 11.5"
Unit Height:.....4' 1.375"
*** Total Operating Weight:.....1217 lb

*** Weights and Dimensions are approximate. Weight does not include unit packaging. Approximate dimensions are provided primarily for shipping purposes. For exact dimensions and weights, refer to appropriate product data catalog.

Lines and Filters

Gas Line Size:.....3/4
Condensate Drain Line Size:.....3/4
Return Air Filter Type:.....Throwaway
Return Air Filter Quantity:.....4
Return Air Filter Size:.....20 x 20 x 2

Unit Configuration

High Static Option
Al/Cu - Al/Cu
Base Electromechanical Controls
Standard Packaging

Warranty Information

1-Year parts(std.)
5-Year compressor parts(std.)
10-Year heat exchanger - Aluminized(std.)

No optional warranties were selected.

NOTE: Please see Warranty Catalog 500-089 for explanation of policies and ordering methods.

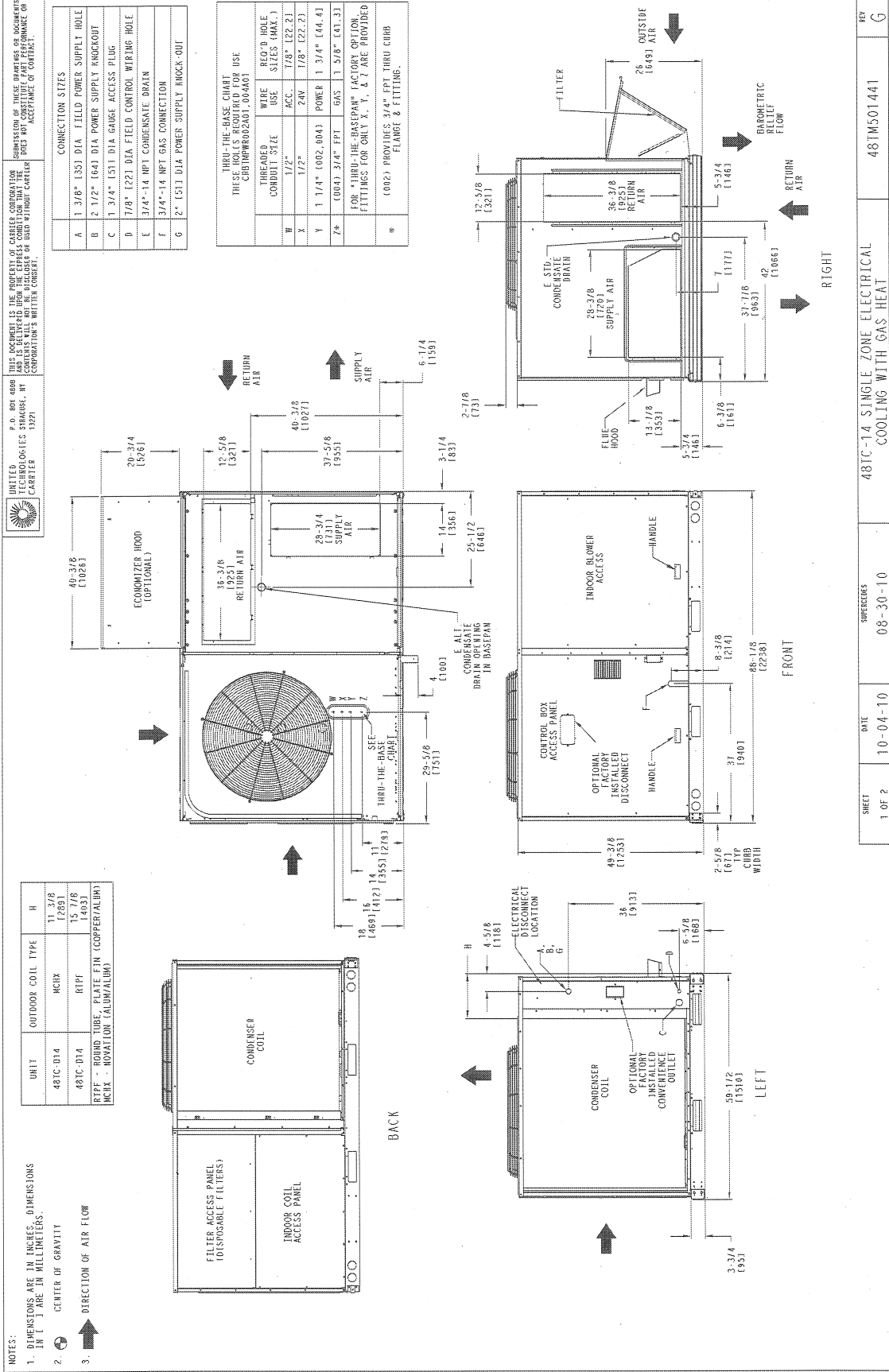
Ordering Information

Part Number	Description	Quantity
48TCFD14A3A5-0A0A0	Rooftop Unit	1

Project: ~Untitled21
Prepared By:

Certified Drawing for 12.5 Ton

06/20/2013
11:32AM



Certified Drawing for 12.5 Ton

Project: ~Untitled21
Prepared By:

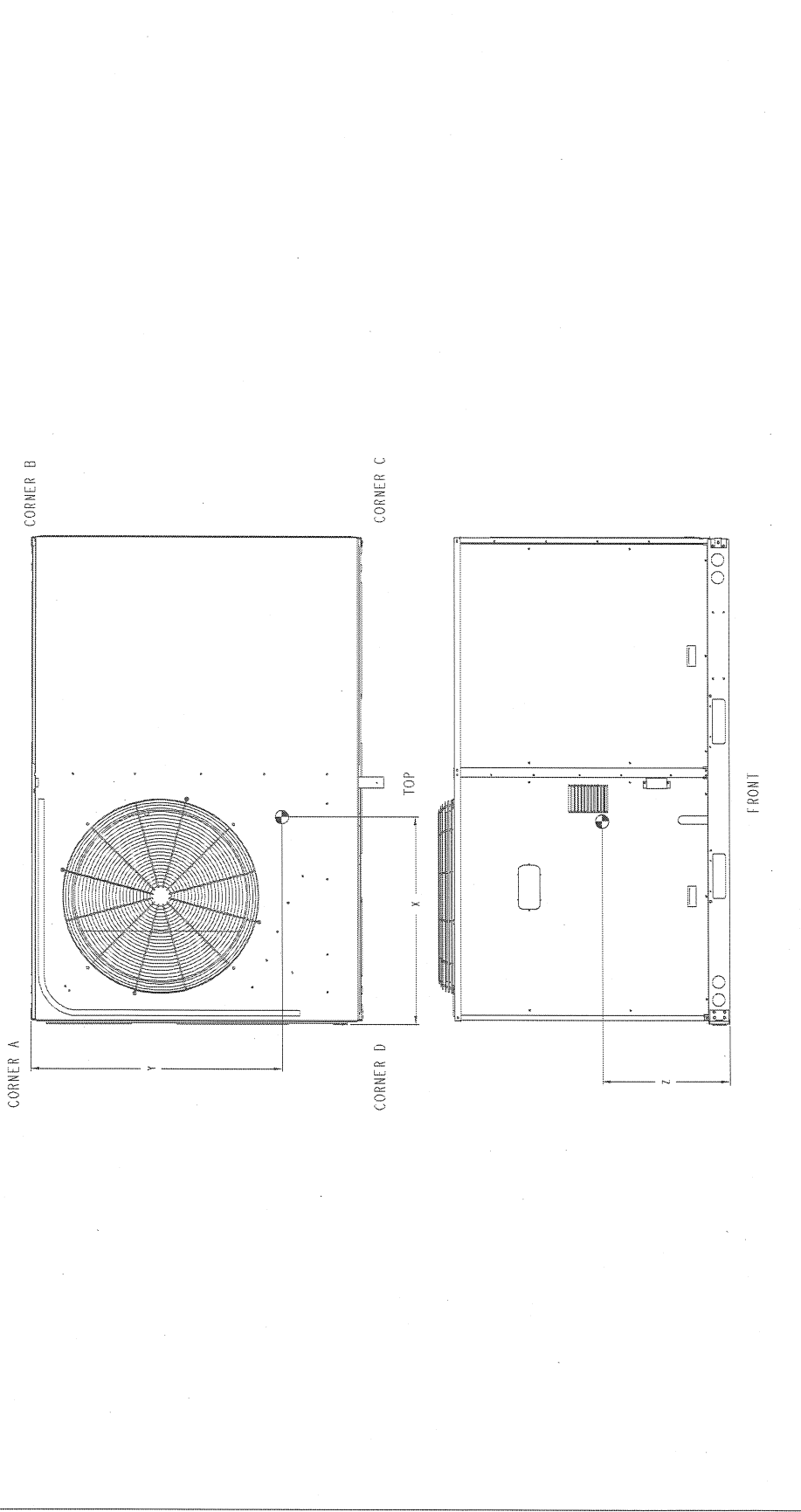
06/20/2013
11:32AM

UNITED TECHNOLOGIES SYMACHI, NY
P.O. BOX 4908
13873
CARRIER

THIS DOCUMENT IS THE PROPERTY OF CARBIDE CORPORATION AND IS DELIVERED FOR THE EXPRESS CONDITION THAT THE BUYER DOES NOT CONSTITUTE PART PERFORMANCE OR ACCEPTANCE OF CONTRACT

UNIT	STD. UNIT WEIGHT**	CORNER WEIGHT (A)	CORNER WEIGHT (B)	CORNER WEIGHT (C)	CORNER WEIGHT (D)	C. G.								
						X	Y	Z						
48TC-014	1115	505	485	465	455	29	1/2	11/16	34	1/4	18/31	20	1/4	15/16
48TC-014	1181	530	508	484	474	29	1/2	11/16	34	1/4	18/31	20	1/4	15/16
48TC-014	1181	530	508	484	474	31	3/8	11/16	34	3/4	18/31	21	1/8	15/16

** STD. UNIT WEIGHT IS WITH LOW GAS HEAT AND WITHOUT PACKAGING.
FOR OTHER OPTIONS AND ACCESSORIES, REFER TO THE PRODUCT DATA CATALOG.



SHEET	DATE	SPRINKLES	REV
2 OF 2	10-04-10	08-30-10	G

48TC-14 SINGLE ZONE ELECTRICAL
COOLING WITH GAS HEAT

48TM501441

Performance Summary For 12.5 Ton

Project: ~Untitled21
 Prepared By:

06/20/2013
 11:32AM

Part Number:48TCFD14A3A5-0A0A0

ARI EER:..... 10.80
 IEER:..... 11.0

Base Unit Dimensions

Unit Length:..... 88.1 in
 Unit Width:..... 59.5 in
 Unit Height:..... 49.4 in

Operating Weight

Base Unit Weight:..... 1167 lb
 High Heat:..... 35 lb
 High Static Option:..... 15 lb

 Total Operating Weight:..... 1217 lb

Unit

Unit Voltage-Phase-Hertz:..... 208-3-60
 Air Discharge:..... Vertical
 Fan Drive Type:..... Belt
 Actual Airflow:..... 4800 CFM
 Site Altitude:..... 0 ft

Cooling Performance

Condenser Entering Air DB:..... 95.0 F
 Evaporator Entering Air DB:..... 80.0 F
 Evaporator Entering Air WB:..... 67.0 F
 Entering Air Enthalpy:..... 31.44 BTU/lb
 Evaporator Leaving Air DB:..... 60.0 F
 Evaporator Leaving Air WB:..... 57.3 F
 Evaporator Leaving Air Enthalpy:..... 24.59 BTU/lb
 Gross Cooling Capacity:..... 148.00 MBH
 Gross Sensible Capacity:..... 103.80 MBH
 Compressor Power Input:..... 10.20 kW
 Coil Bypass Factor:..... 0.245

Heating Performance

Heating Airflow:..... 4800 CFM
 Entering Air Temp:..... 70.0 F
 Leaving Air Temp:..... 109.5 F
 Gas Input Capacity:..... 200.0 / 250.0 MBH
 Gas Heating Capacity:..... 205.00 MBH
 Temperature Rise:..... 39.5 F
 NOTE:..... Second Stage

Supply Fan

External Static Pressure:..... 0.50 in wg
 Fan RPM:..... 983
 Fan Power:..... 3.20 BHP
 NOTE:..... The Selected Indoor Fan Motor requires a Field-Supplied Drive (RPM Range: 1022 - 1240).

Electrical Data (Before July 30, 2012)

Minimum Voltage:..... 187
 Maximum Voltage:..... 253
 Compressor #1 RLA:..... 19
 Compressor #1 LRA:..... 123
 Compressor #2 RLA:..... 22.4
 Compressor #2 LRA:..... 149
 Outdoor Fan Motor Qty:..... 1
 Outdoor Fan FLA (ea):..... 6.2

Performance Summary For 12.5 Ton

Project: ~Untitled21
Prepared By:

06/20/2013
11:32AM

Indoor Fan Motor Type:.....	HIGH
Indoor Fan Motor FLA:.....	.15
Combustion Fan Motor FLA (ea):.....	0.48
Power Supply MCA:.....	68.2
Power Supply MOCP (Fuse or HACR):.....	80
Min. Unit Disconnect FLA:.....	.72
Min. Unit Disconnect LRA:.....	.386
Electrical Convenience Outlet:.....	None

Electrical Data (July 30, 2012 and Beyond)

Indoor Fan Motor FLA:.....	13.6
Power Supply MCA:.....	.67
Power Supply MOCP:.....	.80
Disconnect Size FLA:.....	.70
Disconnect Size LRA:.....	.392

July 30th and beyond units can be identified by serial number 3112XXXXXXXXXX and higher

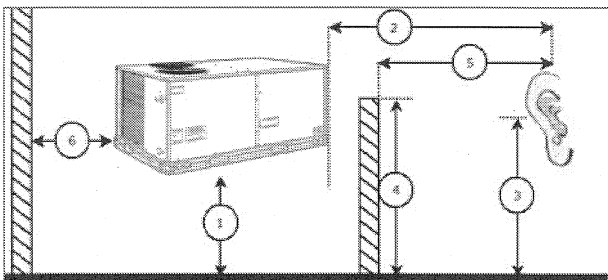
Control Panel SCCR: 5kA RMS at Rated Symmetrical Voltage

Acoustics

Sound Power Levels, db re 10E-12 Watts

	Discharge	Inlet	Outdoor
63 Hz	98.5	94.7	87.0
125 Hz	95.3	88.5	85.2
250 Hz	83.7	74.0	84.6
500 Hz	77.7	69.8	84.9
1000 Hz	74.2	67.4	82.2
2000 Hz	70.9	63.3	78.4
4000 Hz	73.9	63.3	75.3
8000 Hz	75.7	61.5	72.9
A-Weighted	84.2	76.5	87.0

Advanced Acoustics



Advanced Acoustics Parameters

1. Unit height above ground:.....	30.0 ft
2. Horizontal distance from unit to receiver:.....	50.0 ft
3. Receiver height above ground:.....	5.7 ft
4. Height of obstruction:.....	0.0 ft
5. Horizontal distance from obstruction to receiver:.....	0.0 ft
6. Horizontal distance from unit to obstruction:.....	0.0 ft

Detailed Acoustics Information

Performance Summary For 12.5 Ton

Project: ~Untitled21
Prepared By:

06/20/2013
11:32AM

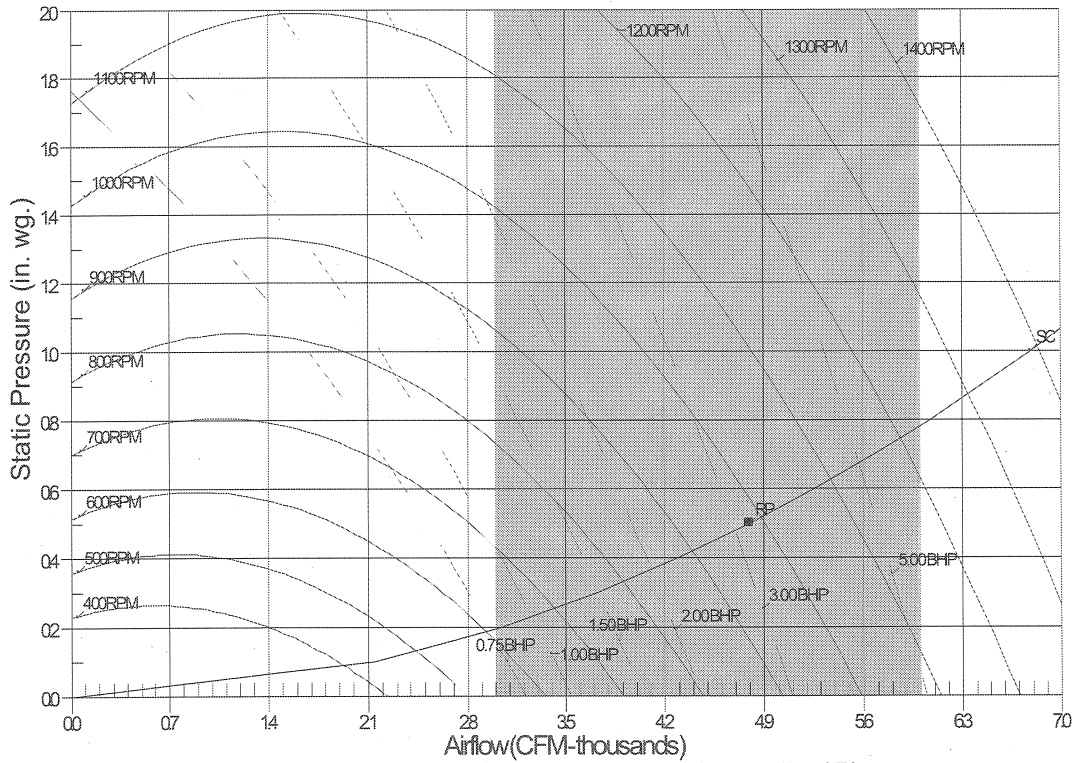
Octave Band Center Freq. Hz	63	125	250	500	1k	2k	4k	8k	Overall
A	87.0	85.2	84.6	84.9	82.2	78.4	75.3	72.9	92.4 Lw
B	60.8	69.1	76.0	81.7	82.2	79.6	76.3	71.8	87.1 LwA
C	54.6	52.8	52.2	52.5	49.8	46.0	42.9	40.5	60.0 Lp
D	28.4	36.7	43.6	49.3	49.8	47.2	43.9	39.4	54.7 LpA

Legend

- A Sound Power Levels at Unit's Acoustic Center, Lw
- B A-Weighted Sound Power Levels at Unit's Acoustic Center, LwA
- C Sound Pressure Levels at Specific Distance from Unit, Lp
- D A-Weighted Sound Pressure Levels at Specific Distance from Unit, LpA

Calculation methods used in this program are patterned after the ASHRAE Guide; other ASHRAE Publications and the AHRI Acoustical Standards. While a very significant effort has been made to insure the technical accuracy of this program, it is assumed that the user is knowledgeable in the art of system sound estimation and is aware of the tolerances involved in real world acoustical estimation. This program makes certain assumptions as to the dominant sound sources and sound paths which may not always be appropriate to the real system being estimated. Because of this, no assurances can be offered that this software will always generate an accurate sound prediction from user supplied input data. If in doubt about the estimation of expected sound levels in a space, an Acoustical Engineer or a person with sound prediction expertise should be consulted.

FanCurve

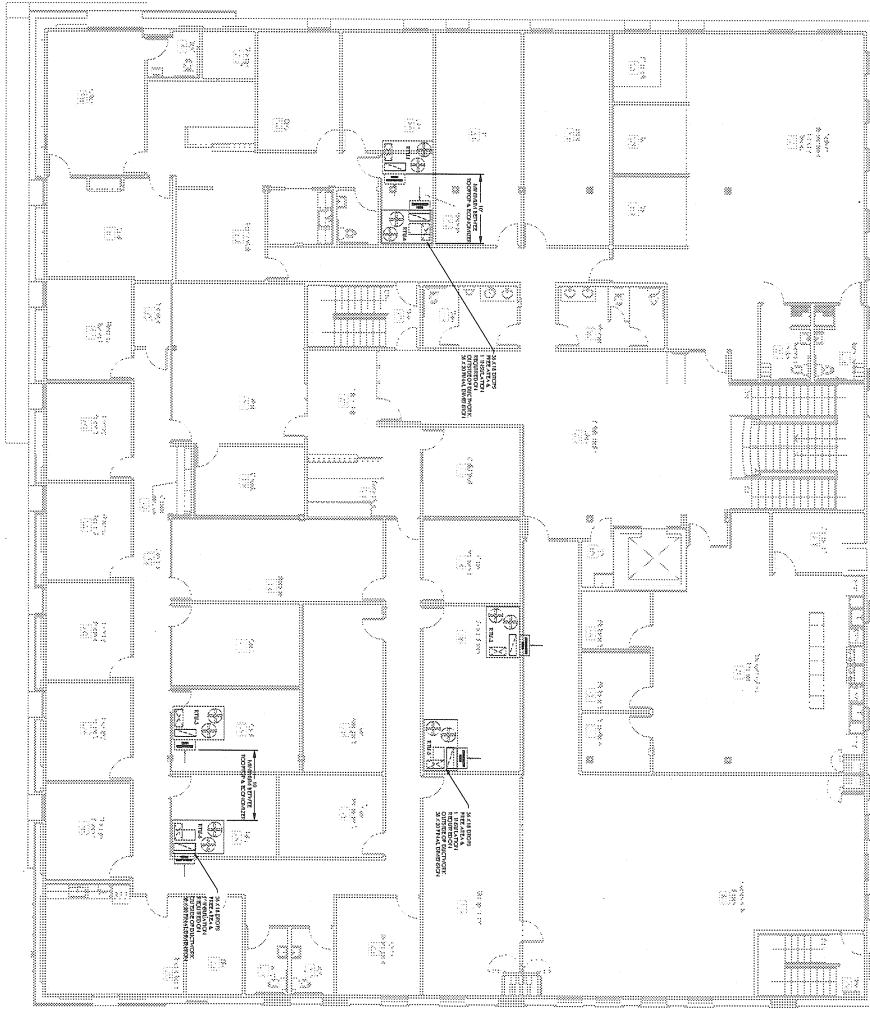


RPM=983 BHP=3.20 Maximum RPM=1130 Maximum BHP=4.70
 Note: Please contact application engineering for selections outside the shaded region.
 SC-System Curve RP-Rated Point

Spec Sheet for 12.5 Ton

Project: ~Untitled21
Prepared By:

06/20/2013
11:32AM



HVAC FLOOR PLAN
SCALE: 1/8" = 1'-0"

THESE DRAWINGS ARE UNDESIGNED AND UNPERMANENT. THEY ARE ISSUED TO SHOW THE INTENT OF THE DESIGN AND TO PROVIDE A BASIS FOR THE CONTRACTOR TO OBTAIN PERMITS. THE CONTRACTOR SHALL BE RESPONSIBLE FOR VERIFYING ALL REQUIREMENTS AND ACCEPTING RESPONSIBILITY FOR THEIR ACCURACY.

NO.	REVISION	DATE	BY

PROJECT:
INDIAN HEALTH

CONTRACTOR:
CAPITAL CONSTRUCTION SERV
16920 W CLEVELAND AVENUE
NEW BERLIN, WI. 53151

AUER STEEL
USE AUER SERVICE & HEATING SUPPLY CO.

2935 W SILVER SPRING DR. MILWAUKEE, WISCONSIN 53209
(414) 469-1234 WATS 1-800-242-0466

M-1
150005
HVAC FLOOR PLAN

SUPPLY / RETURN 25" x 25" OR 32" x 20" OR 36" x 18" OR 42" x 16" FLOOR ALGA
 + 1" INSULATION + 1" CLEARANCE
 1" CLEARANCE

SUBMITTAL

MicroMetl

FORM NO. 1282-19P

DATE: 1 / 02

Roofcurbs for Carrier 48/50TC A/D08,A09,A/D12,D14;
 50TCQ D08-D12; 48/50HC A07,D08-D12; 48/50TF,TM,HJ
 008-014; 50TFQ 008-014; 50HJQ 008-009 Units

Part Number:
0597 Series

SUBMITTED TO _____
 COMPANY: _____
 DRAWN BY: A.L.L.
 JOB NAME: _____
 EQUIPMENT: _____
 NOTES: _____

0597 Series Roofcurb Specifications (in inches)			
MicroMetl Part No.	Bryant Part No.	A	Weight
0597-008A	N/A	8	90 lbs
0597-011A	N/A	11	104 lbs
0597-014A	CRRFCURB003A01	14	118 lbs
0597-024A	CRRFCURB004A01	24	164 lbs

FEATURES

- * Roofcurb sides and ends are 16ga. galvanized steel. (.058 min.)
- * Gasketing package provided.
- * Full perimeter wood nailer.
- * Assembly hardware not required.

NOTES:

- 1.) Adjustable Pitched / Adjustable Height curbs and taller curbs are available. Contact factory.
- 2.) Attach ductwork to roofcurb. Flanges of duct rest on top of curb.
- 3.) Roofcurbs are marked with the Carrier part number.
- 4.) The standard MicroMetl curbs do not have service plate holes. If they are required, you must specify on the order.

NOTE: If using through the side of the curb gas or electric connectors, you must specify service holes are required. Optional service plates: 0815-0597.

CURB

