

PROPERTY EXHIBIT

SITUATED ON SOUTH 6TH STREET IN THE CITY OF MILWAUKEE, MILWAUKEE COUNTY, WISCONSIN

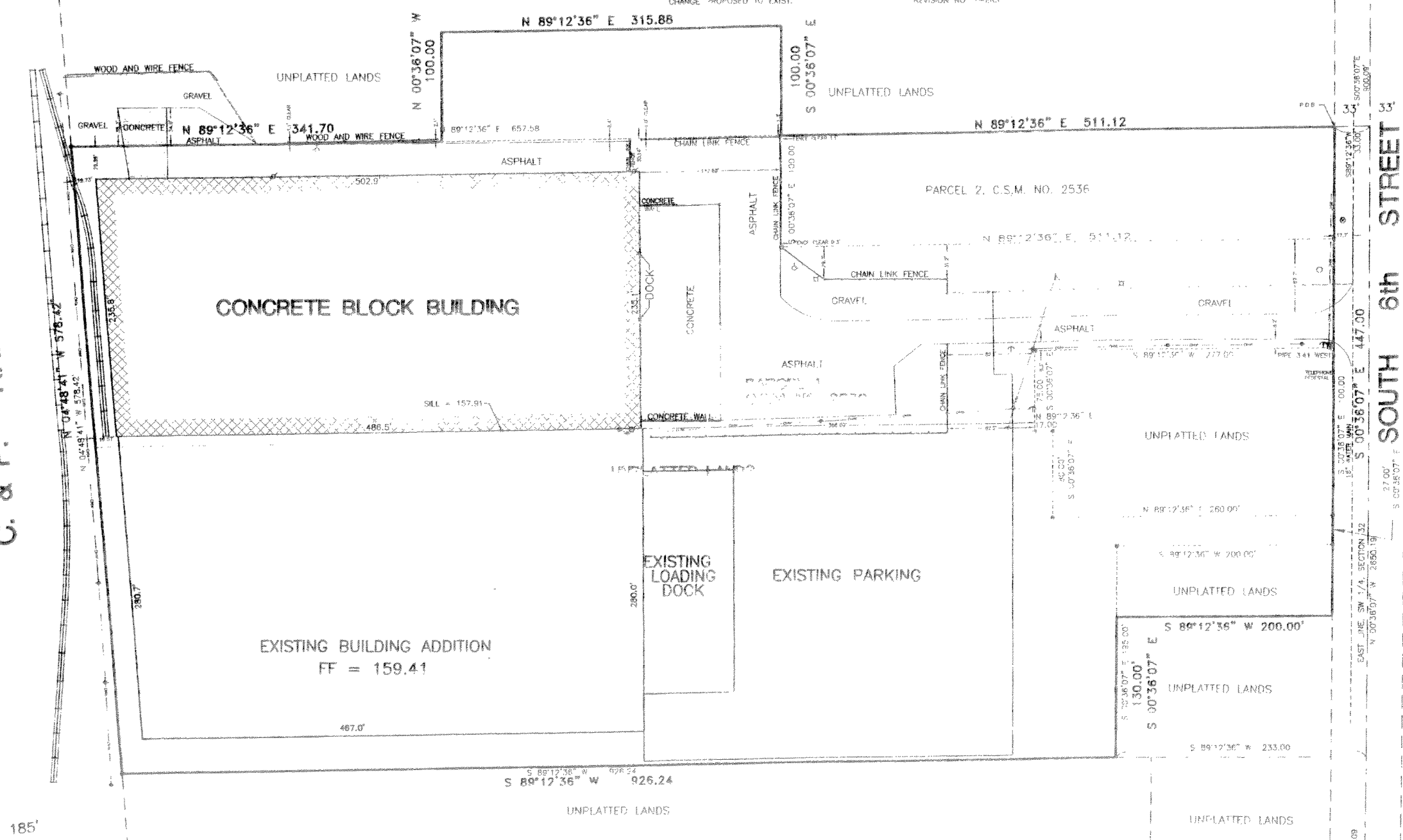
PART OF THE NORTHEAST 1/4 AND THE SOUTHWEST 1/4 OF THE SOUTHWEST 1/4 OF SECTION 32, TOWN 6 NORTH, RANGE 22 EAST, IN THE CITY OF MILWAUKEE, MILWAUKEE COUNTY, WISCONSIN, BOUNDED AND DESCRIBED AS FOLLOWS:
 COMMENCING AT THE NORTHEAST CORNER OF SAID 1/4 SECTION; THENCE SOUTH 00°36'07" EAST ALONG THE EAST LINE OF SAID 1/4 SECTION 800.00 FEET TO A POINT; THENCE SOUTH 89°12'36" WEST 33.00 FEET TO A POINT ON THE WEST LINE OF SOUTH 6TH STREET AND THE POINT OF BEGINNING OF THE LANDS TO BE DESCRIBED; THENCE SOUTH 00°36'07" EAST ALONG SAID WEST LINE 447.00 FEET TO A POINT; THENCE SOUTH 89°12'36" WEST 200.00 FEET TO A POINT; THENCE SOUTH 00°36'07" EAST 130.00 FEET TO A POINT; THENCE SOUTH 89°12'36" WEST 926.24 FEET TO A POINT ON THE EASTERLY LINE OF A C&P RAILROAD RIGHT-OF-WAY; THENCE NORTH 04°48'41" WEST ALONG SAID EAST LINE 578.42 FEET TO A POINT; THENCE NORTH 89°12'36" EAST 341.70 FEET TO A POINT; THENCE NORTH 00°36'07" WEST 100.00 FEET TO A POINT; THENCE NORTH 89°12'36" EAST 315.86 FEET TO A POINT; THENCE SOUTH 00°36'07" EAST 100.00 FEET TO A POINT; THENCE NORTH 89°12'36" EAST 511.12 FEET TO THE POINT OF BEGINNING.
 SAID PARCEL CONTAINS 659,073 SQUARE FEET OR 15.1302 ACRES.

MAY 7, 2002

UNIFIED CONSTRUCTION
 CHANGE PROPOSED TO EXIST.

DRAWING NO. 158480-CLH
 REVISION NO. 1-ERS

C. & P. RAILROAD



NE CORNER SW 1/4 SECTION 32-8-22 CONCRETE MONUMENT WITH BRASS CAP

SE CORNER SW 1/4 SECTION 32-8-22 CONCRETE MONUMENT WITH ALUMINUM CAP

LEGEND

- ▲ BENCHMARK
- SECTION CORNER
- IRON PIPE FOUND
- IRON PIPE SET
- BOLLARD
- + SOL. BURNING/MONITORING WEL.
- ⌈ FLAGPOLE
- ⌈ MASTROCK
- + SIGN
- BILLBOARD
- ⊠ CONTROL BOX
- TRAFFIC SIGNAL
- Y RAILROAD CROSSING SIGNAL
- ⊠ CABLE PEDESTAL
- ⊠ POWER POLE
- ⌈ GUY POLE
- ⌈ GUY WIRE
- ⌈ LIGHT POLE
- × GROUND OR OTHER SPOT SHOT
- ⊠ HANDICAPPED PARKING
- ⊠ ELECTRIC MANHOLE
- ⊠ ELECTRIC PEDESTAL
- ⊠ ELECTRIC METER
- ⊠ TELEPHONE MANHOLE
- ⊠ TELEPHONE PEDESTAL
- ⊠ MARKED FIBER OPTIC
- ⊠ GAS VALVE
- ⊠ GAS METER
- ⊠ STORM MANHOLE
- ⊠ ROUND INLET
- ⊠ SQUARE INLET
- ⊠ STORM SEWER END SECTION
- ⊠ SANITARY MANHOLE
- ⊠ SANITARY CLEANOUT OR SEPTIC VENT
- ⊠ SANITARY INTERCEPTOR MANHOLE
- ⊠ MISCELLANEOUS MANHOLE
- ⊠ WATER VALVE
- ⊠ HYDRANT
- ⊠ WATER SERVICE CURB STOP
- ⊠ WATER MANHOLE
- ⊠ WELL
- ⊠ WATER SURFACE
- ⊠ WETLANDS FLAG
- ⊠ MARSH
- ⊠ CONIFEROUS TREE
- ⊠ DECIDUOUS TREE
- SHRUB
- EDGE OF TREES
- SANITARY SEWER
- STORM SEWER
- WATERMAIN
- MARKED GAS MAIN
- MARKED ELECTRIC
- OVERHEAD WIRE
- BUREAU ELEC. SERV.
- MARKED TELEPHONE
- MARKED CABLE TV LINE
- MARKED FIBER OPTIC

DATE: 01/09/09



National Survey & Engineering

Telephone: 262.781.1000
 Fax: 262.787.7373
 18745 W. Bluemound Road
 Suite 200
 Brookfield, WI 53005-4039
 www.nse.com

National Survey & Engineering

