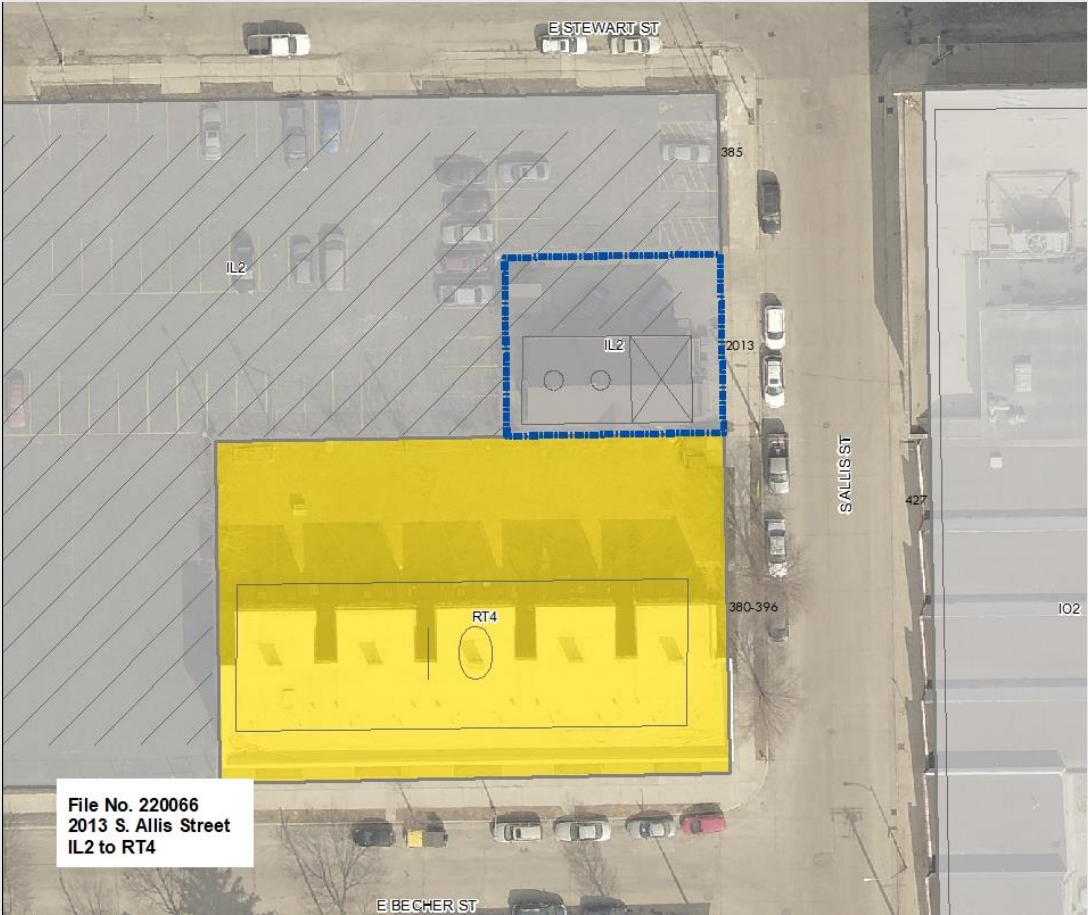


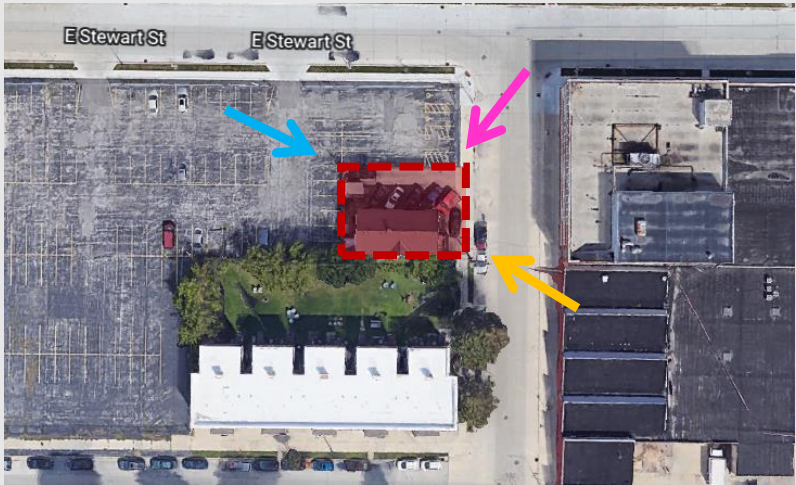
File No. 220066. A substitute ordinance relating to the change in zoning from Industrial Light, IL2, to Two-Family Residential, RT4, to reflect the existing residential use of the site located at 2013 South Allis Street, on the west side of South Allis Street, south of East Stewart Street, in the 14th Aldermanic District.



File No. 220066. Site context.



View from S Allis St looking west



View from S Allis St looking southwest



View from parking lot looking southeast



Harbor District Water and Land Use Plan

- Adopted in 2017
- The Grand Trunk sub-district is primarily industrial, with a small pocket of homes located in the southwest corner of the area
- The southwest corner of the district has been identified for mixed use (office, retail, and residential)
- The proposed zoning change is consistent with the Harbor District Water and Land Use Plan

