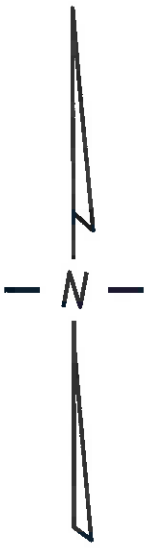


N.W. 1/4 SEC. 28, T.7N., R.22E.

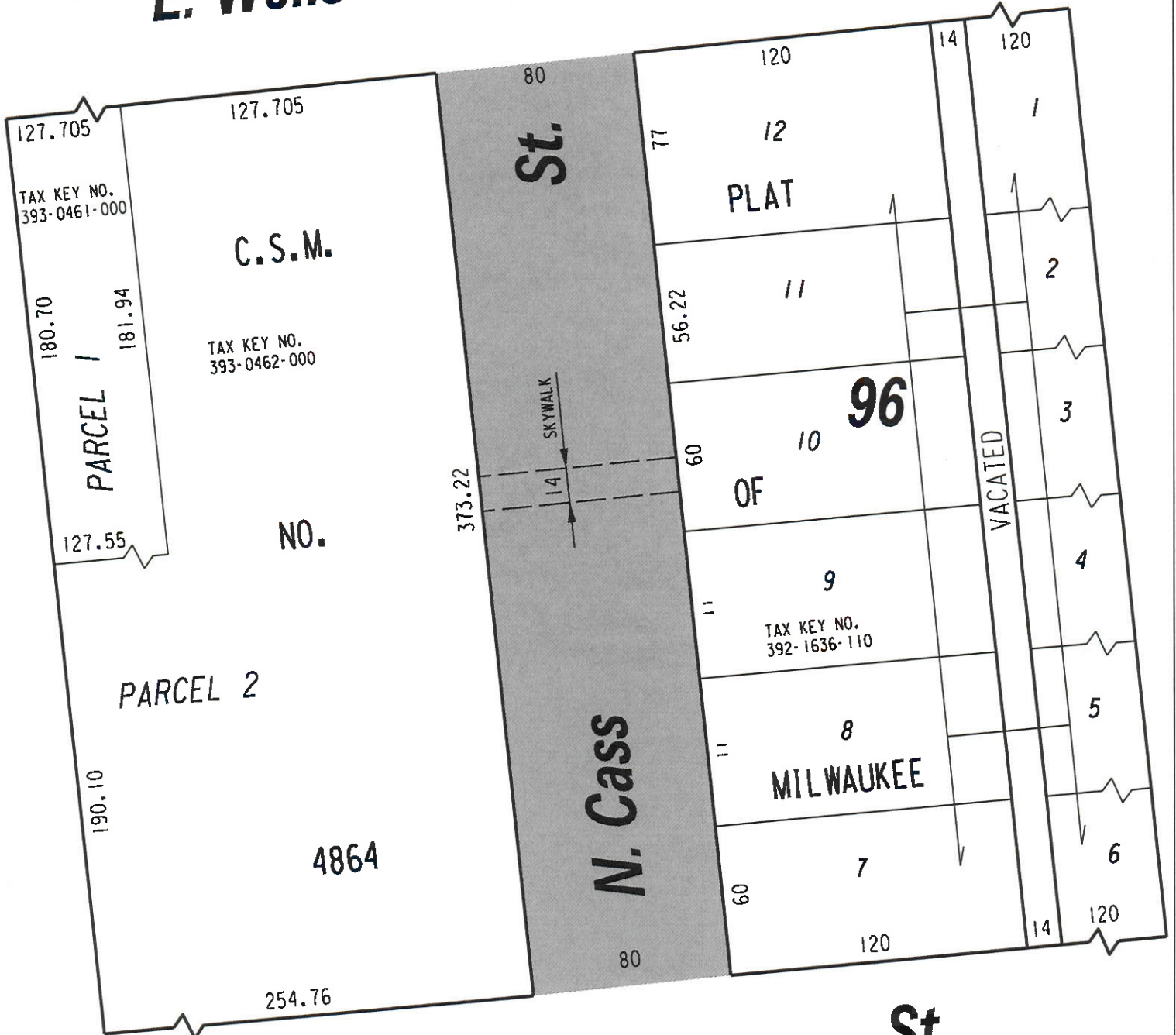
393



E. Wells

(80' R.O.W.)

St.



E. Mason

(R.O.W. VARIES)

St.

 PUBLIC STREET
PROPOSED TO
BE VACATED

EXHIBIT "A"

FILE NO. 230046

INFRASTRUCTURE SERVICES DIVISION

MILWAUKEE, WISCONSIN

ASSIGNED TO: D. BEKELE

CH'K'D. BY: Y. MARTI

DRAWN BY: D.B.

DATE: MAY 24, 2023

PROJECT/GRANT NO.: WK52337444

SCALE: 1" = 60'

APPROVED BY:

Yan Wei

CENTRAL DRAFTING & RECORDS MANAGER

[Signature]

CITY ENGINEER