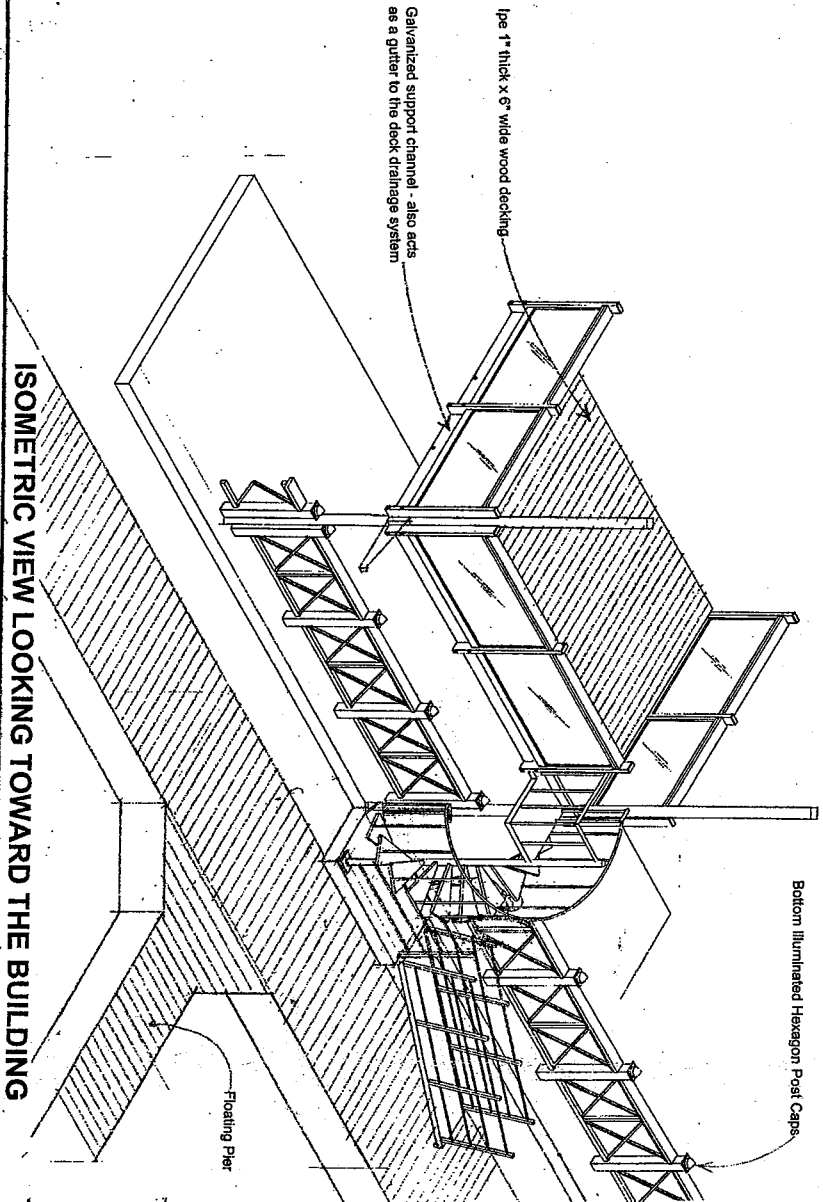
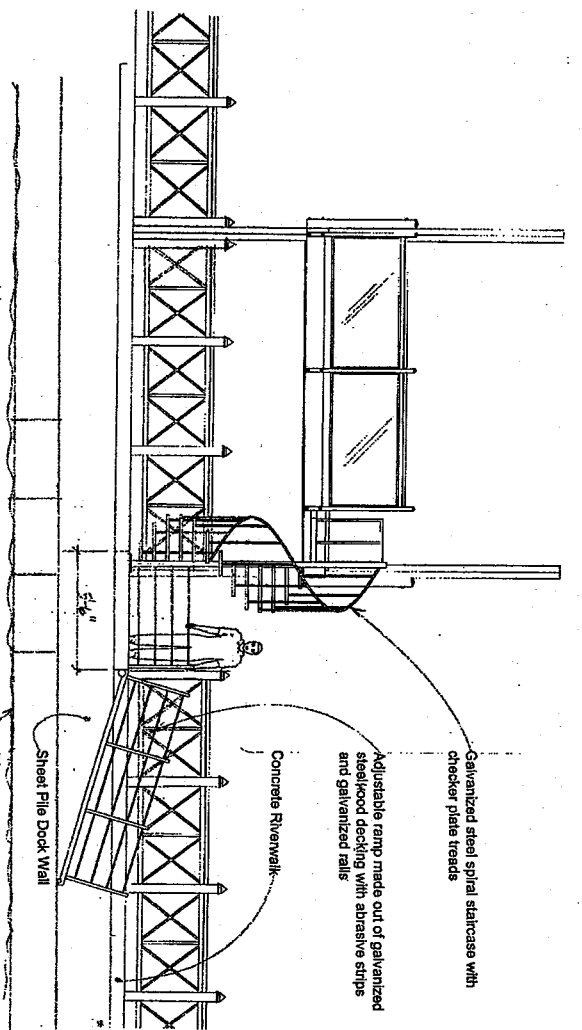


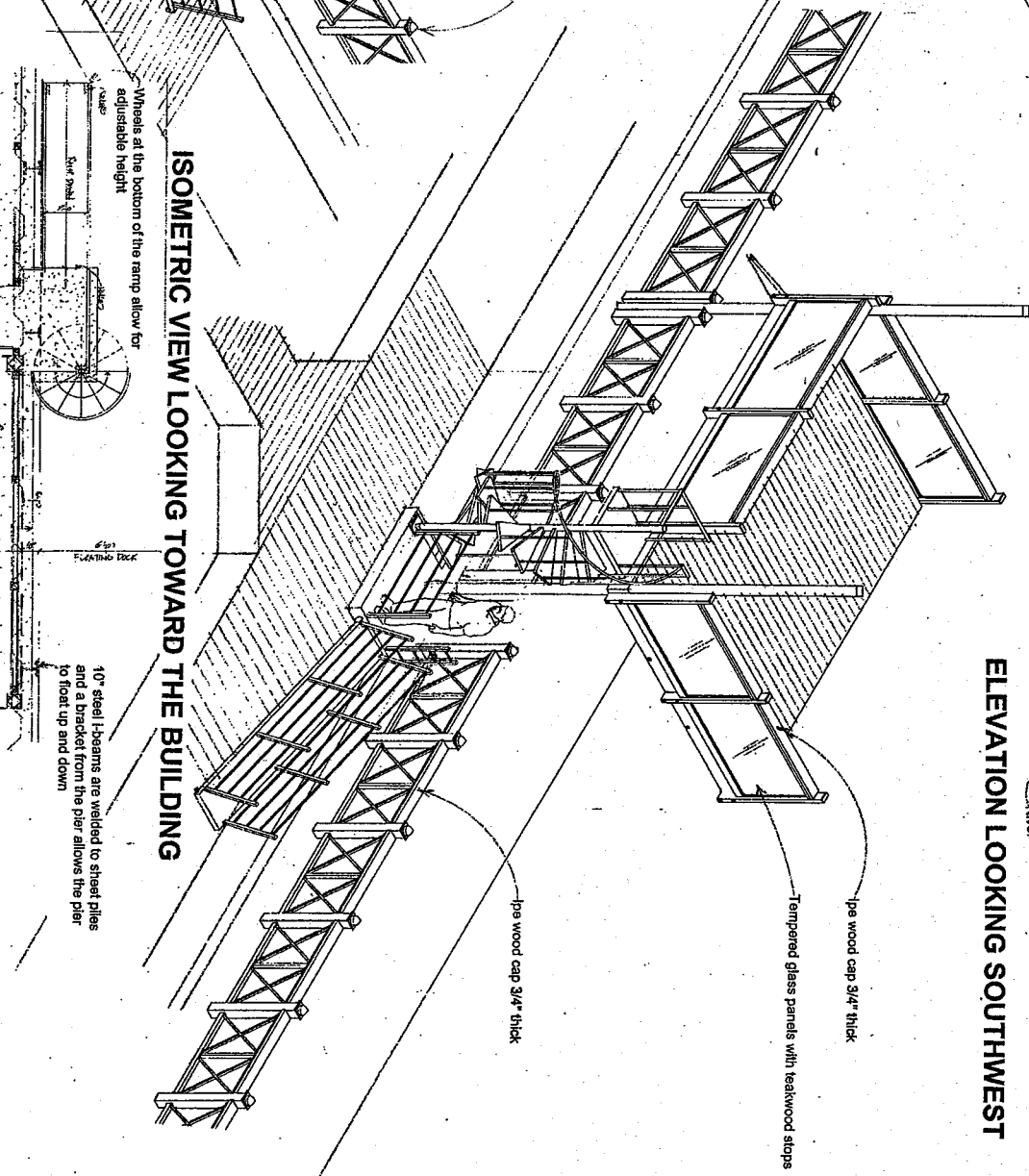
ISOMETRIC VIEW LOOKING TOWARD THE RIVER



ISOMETRIC VIEW LOOKING TOWARD THE BUILDING

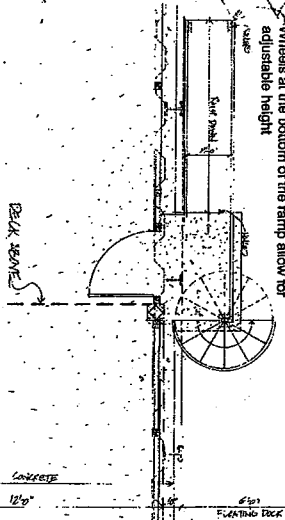


ELEVATION LOOKING SOUTHWEST



ISOMETRIC VIEW LOOKING TOWARD THE BUILDING

TYPICAL RIVER FRONT GROUND FLOOR DECK



RIVERWALK DECK, SPIRAL STAIR, ADJUSTABLE RAMP AND RAIL DETAILS

NOTE THAT DECKS THAT FRONT ON SOUTH WATER STREET WILL EMPLOY A SIMILAR DECK DRAINAGE SYSTEM EXCEPT THAT THE OUTSIDE CHANNELS WILL DRAIN BACK TO THE BUILDING WHERE THE DRAINAGE WILL BE DRAINED INTO COPPER DOWNSPOUTS

10" steel I-beams are welded to sheet piles and a bracket from the pier allows the pier to float up and down

1/2" wood cap 3/4" thick

Tempered glass panels with teakwood strips

1/2" wood cap 3/4" thick

Adjustable ramp made out of galvanized steel/wood decking with adhesive strips and galvanized rails

Galvanized steel spiral staircase with checker plate treads

ADDITIONAL INFO.

EXHIBIT A

File No. 01683

ZND/ce

al solutions  
WATER STREET  
E. WI 53202  
3-6637  
3-6638

REVISIONS  
BY  
DATE

5/24/02  
US

THE WATERFRONT

Date 05/26/02

Scale 1/4"=1'-0"

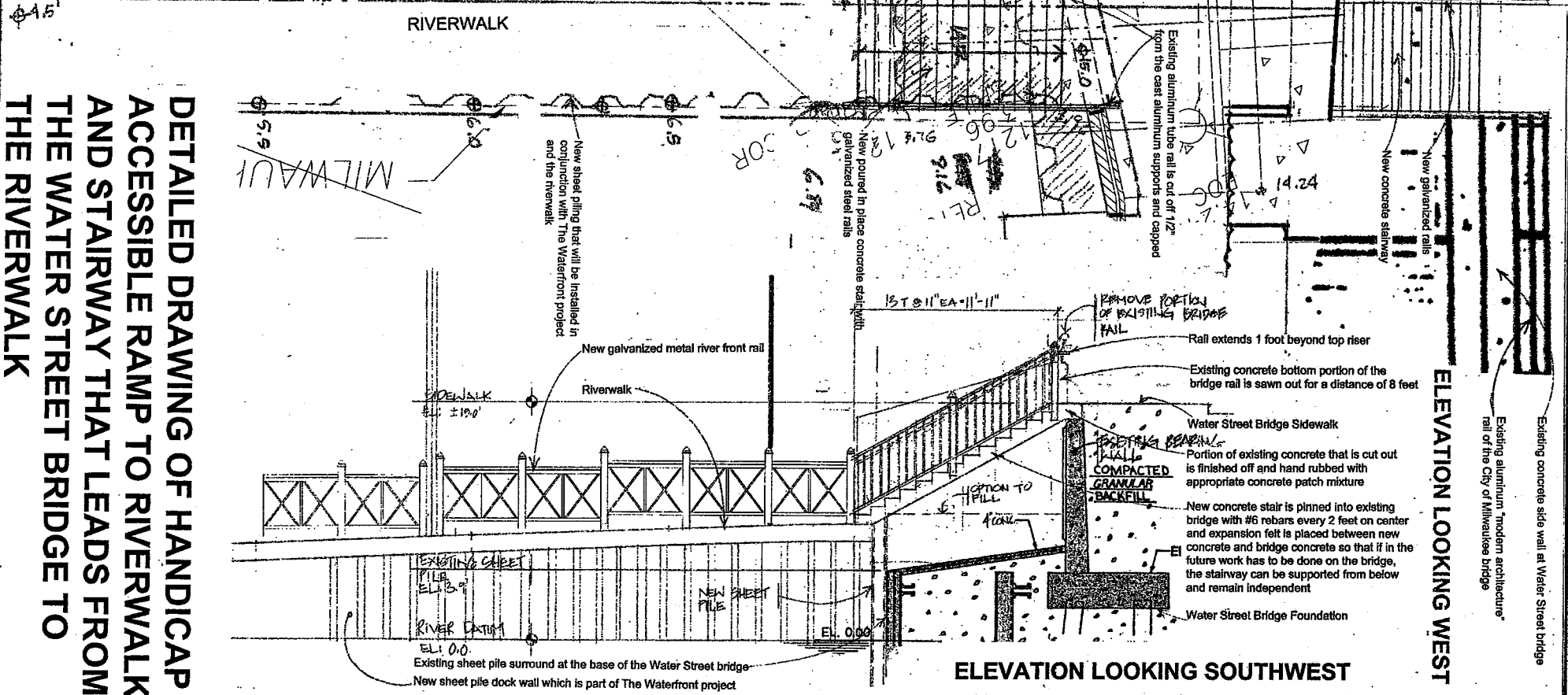
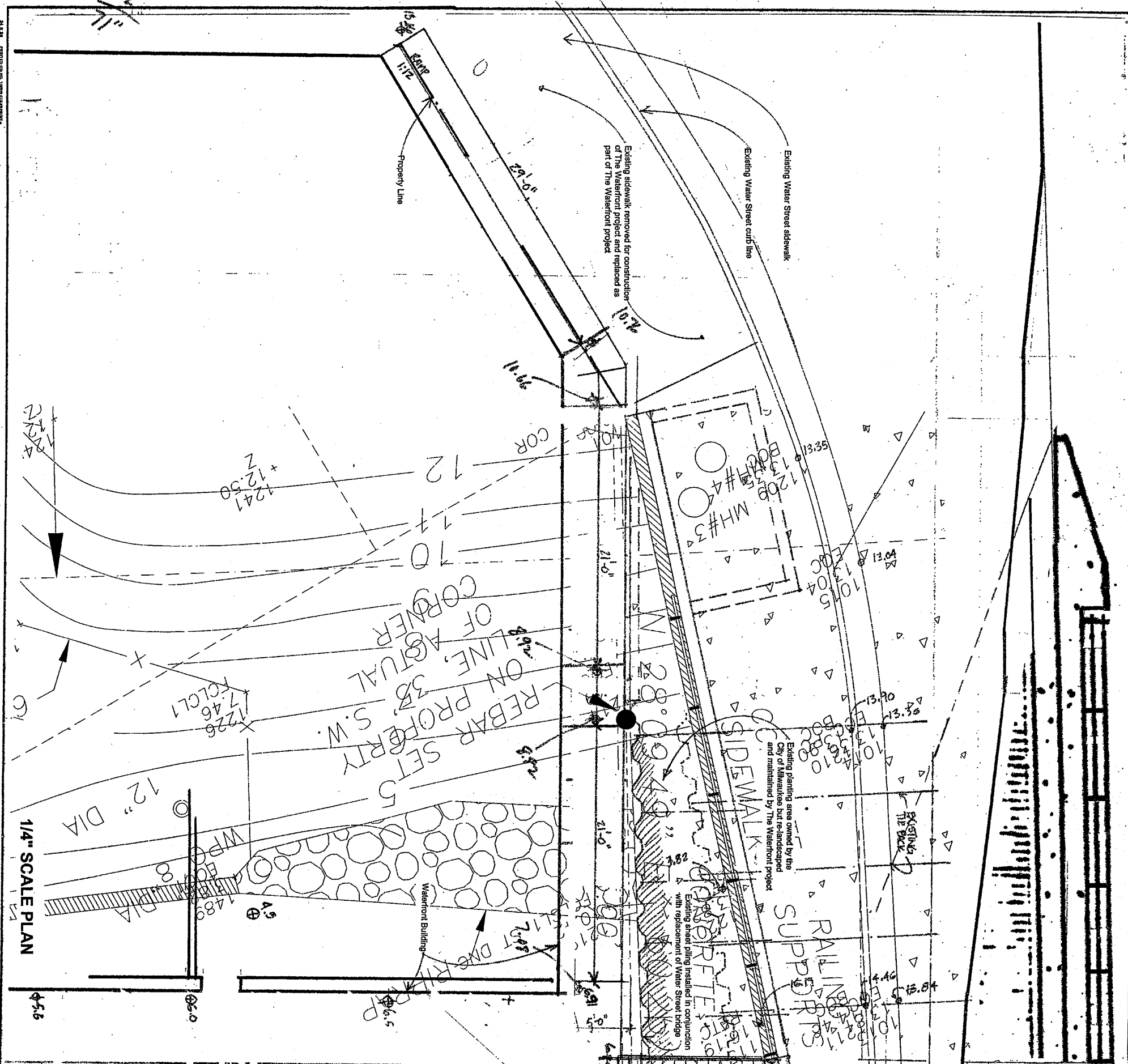
Drawn 605

Job 0460.00

Sheet

Of Sheets

PRINTED ON 100% RECYCLED PAPER



**DETAILED DRAWING OF HANDICAP ACCESSIBLE RAMP TO RIVERWALK AND STAIRWAY THAT LEADS FROM THE WATER STREET BRIDGE TO THE RIVERWALK**

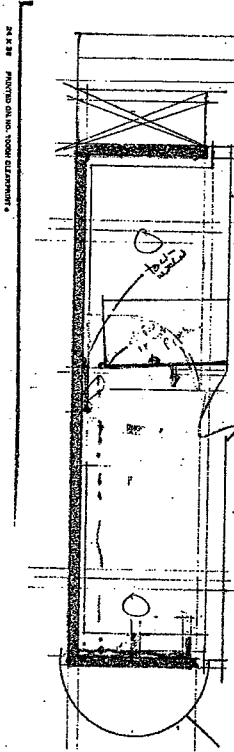
Date 05/24/02  
 Scale AS SHOWN  
 Drawn HD  
 Job #160.08  
 Sheet

**THE WATERFRONT**

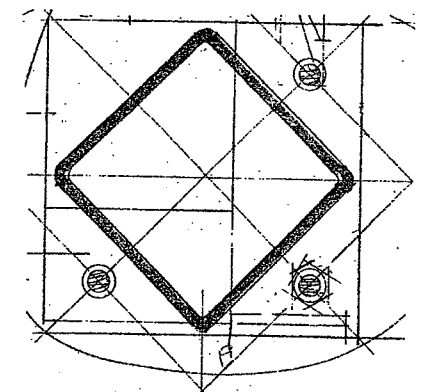
**RENNER architects**

architectural solutions  
 026 NORTH WATER STREET  
 MILWAUKEE, WI 53202  
 414 273-6637  
 FAX 273-6638

NO.	REVISIONS	BY

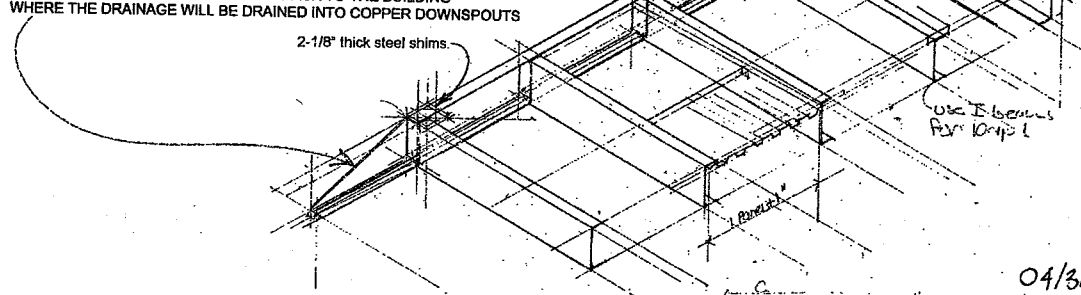


Typical section at the side channel/ gutter.  
HALF SCALE



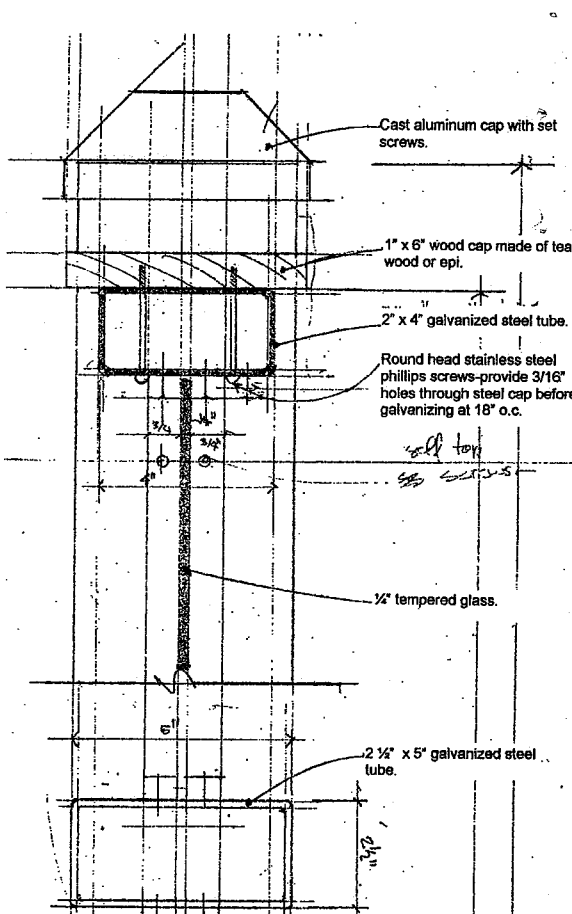
Typical corner post  
HALF SCALE

NOTE THAT DECKS THAT FRONT ON SOUTH WATER STREET WILL EMPLOY A SIMILAR DECK DRAINAGE SYSTEM EXCEPT THAT THE OUTSIDE CHANNELS WILL DRAIN BACK TO THE BUILDING WHERE THE DRAINAGE WILL BE DRAINED INTO COPPER DOWNSPOUTS

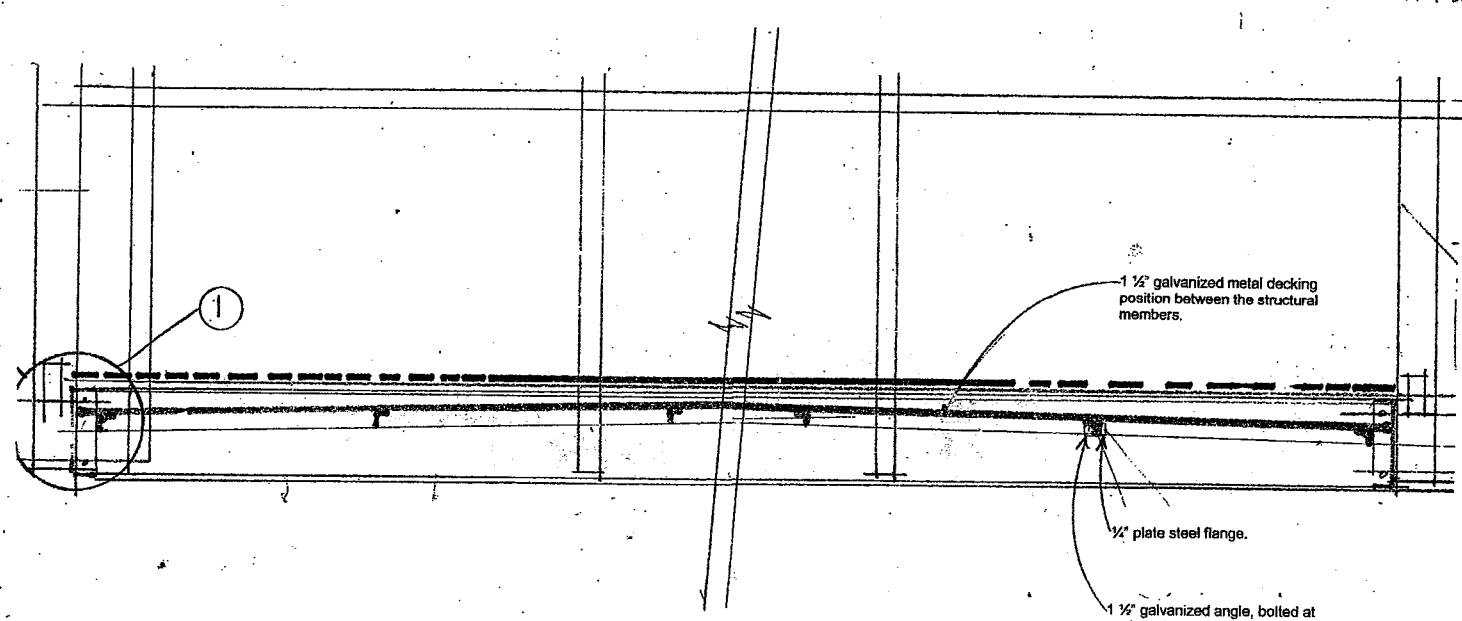


Isometric of partial deck structure.  
1/2" = 1'-0"

Typical connection of plates and decking.  
HALF SCALE

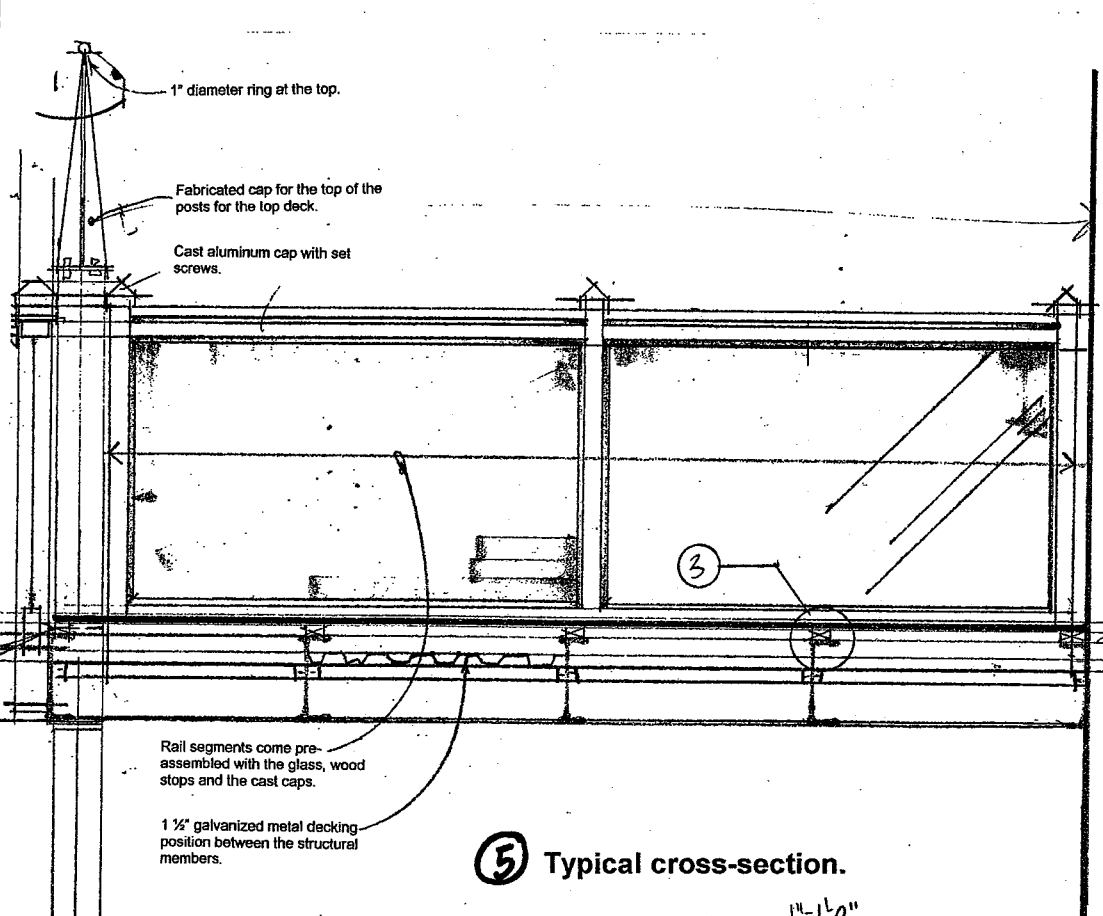


Typical desk post in plan.  
HALF SCALE

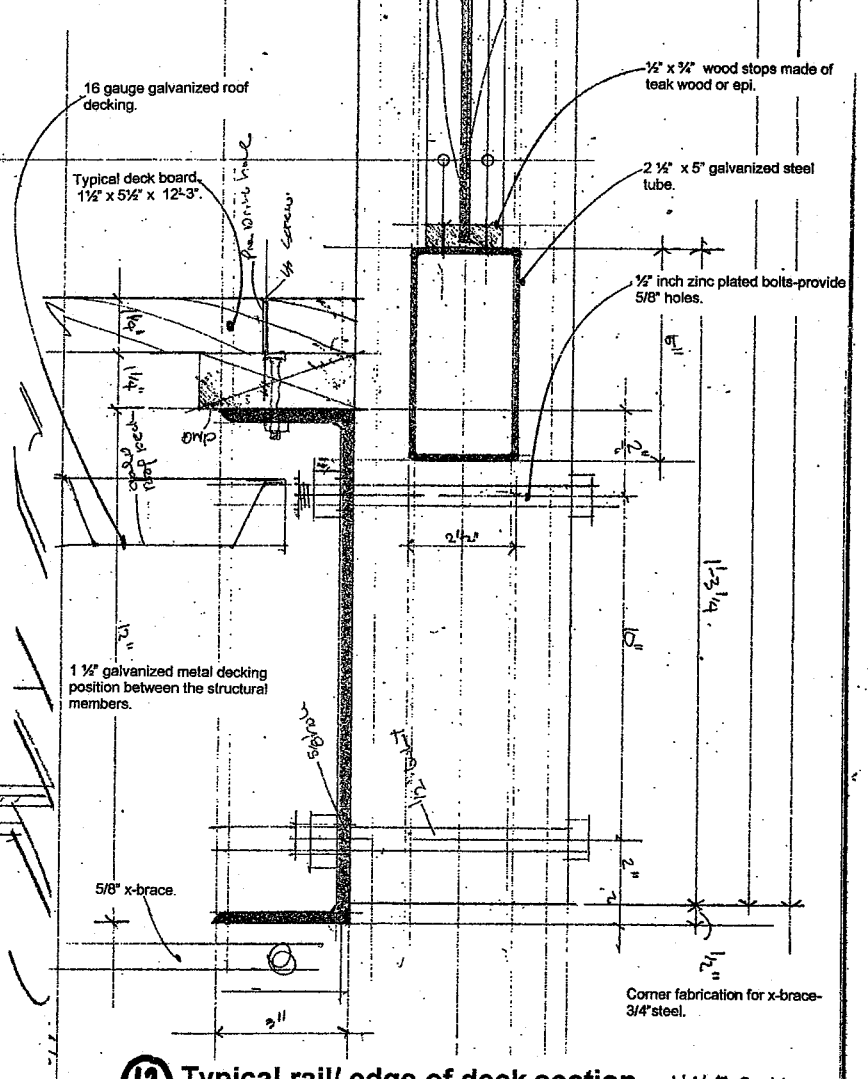


Section looking toward the building.  
1" = 1'-0"

THE WATERFRONT TYPICAL DECK DETAILS



Typical cross-section.  
1" = 1'-0"



Typical rail/ edge of deck section.  
HALF SCALE

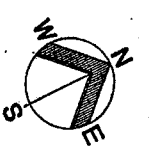
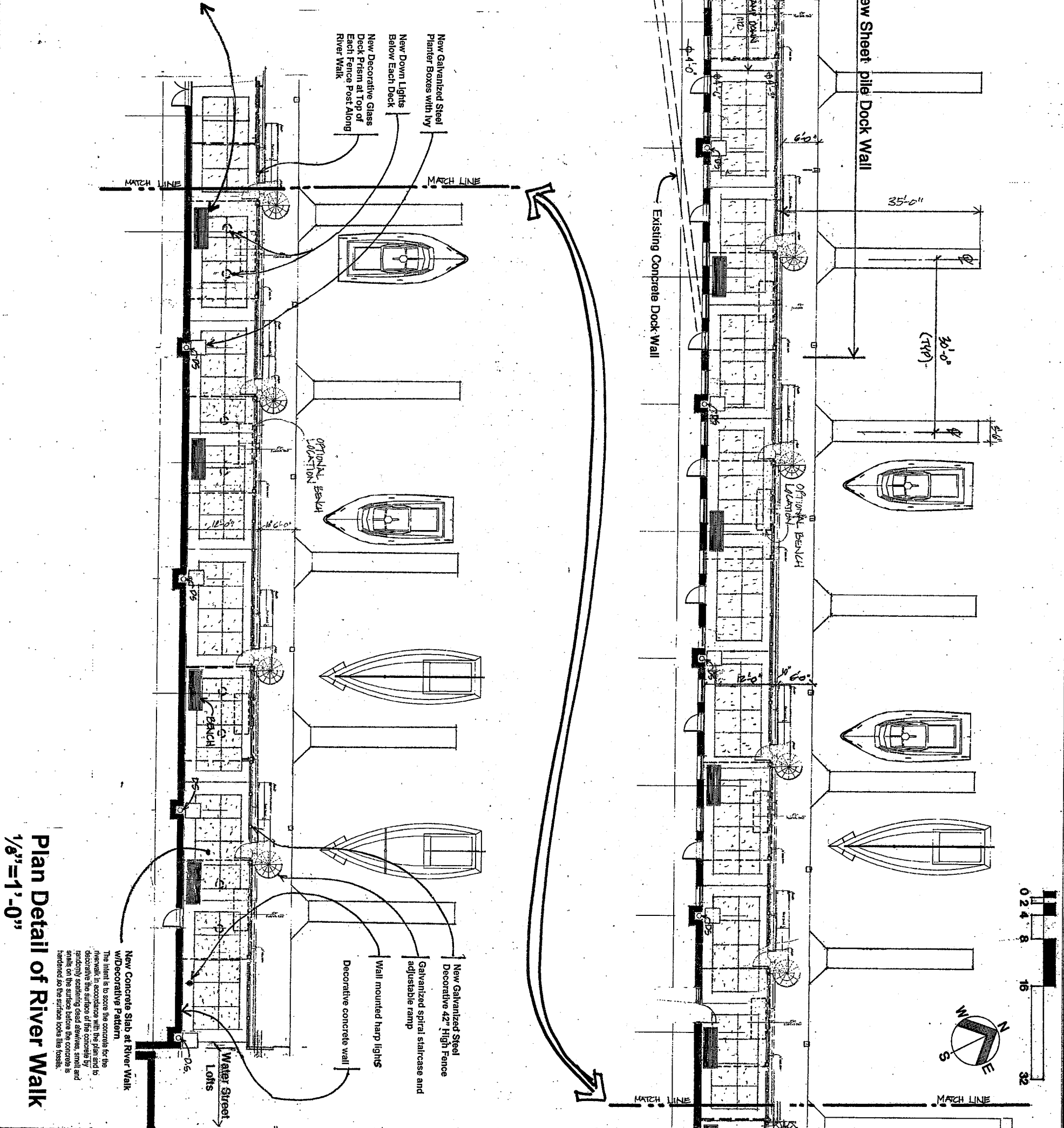
CD	Shawn
SI	
DR	
CH	
CK	
CA	
CB	
CC	
CD	
CE	
CF	
CG	
CH	
CI	
CJ	
CK	
CL	
CM	
CN	
CO	
CP	
CQ	
CR	
CS	
CT	
CU	
CV	
CW	
CX	
CY	
CZ	

THE WATERFRONT

RENNER architects

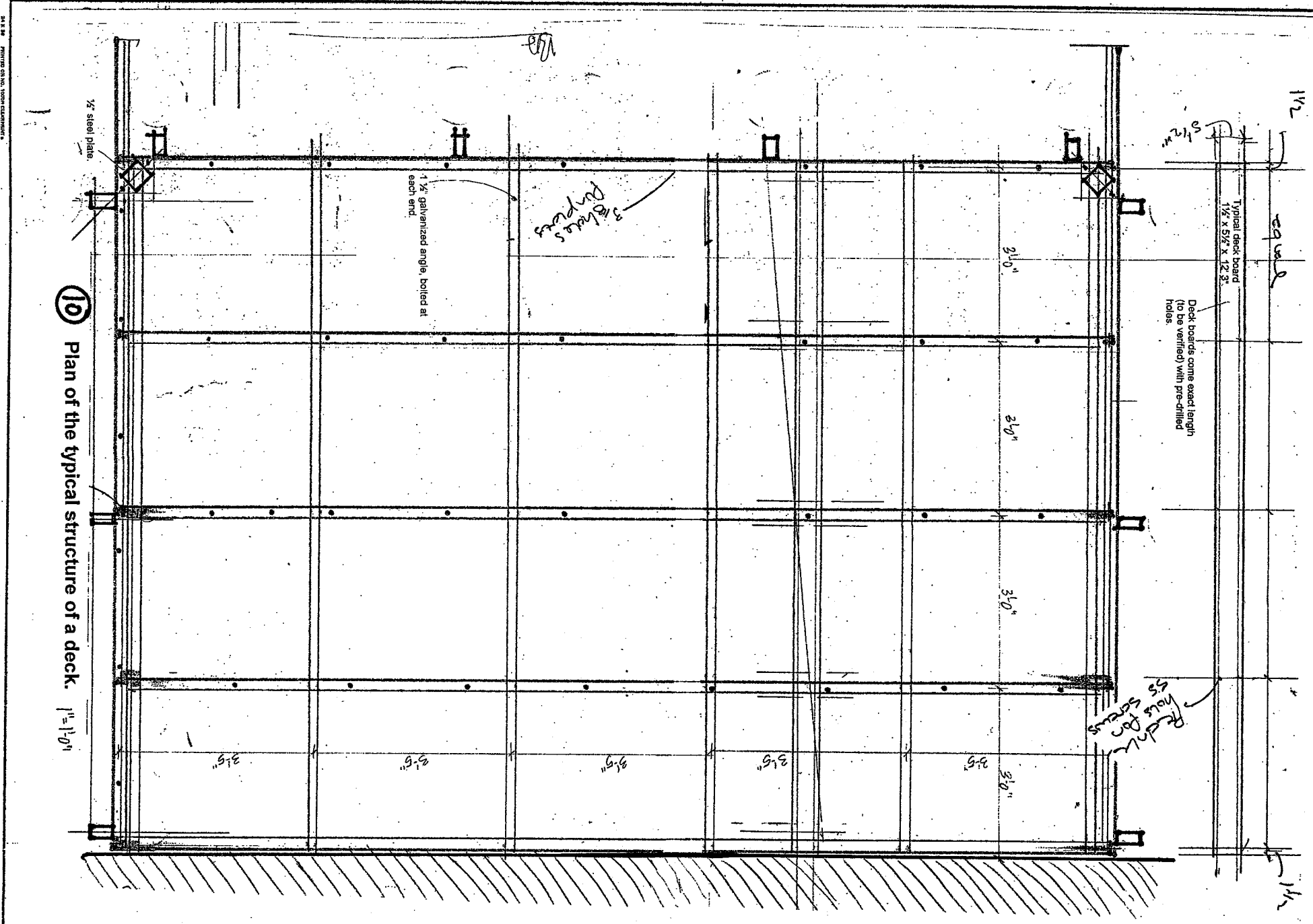
architectural solutions  
626 NORTH WATER STREET  
MILWAUKEE, WI 53202  
414 273-6637  
FAX 273-6638

REVISIONS BY

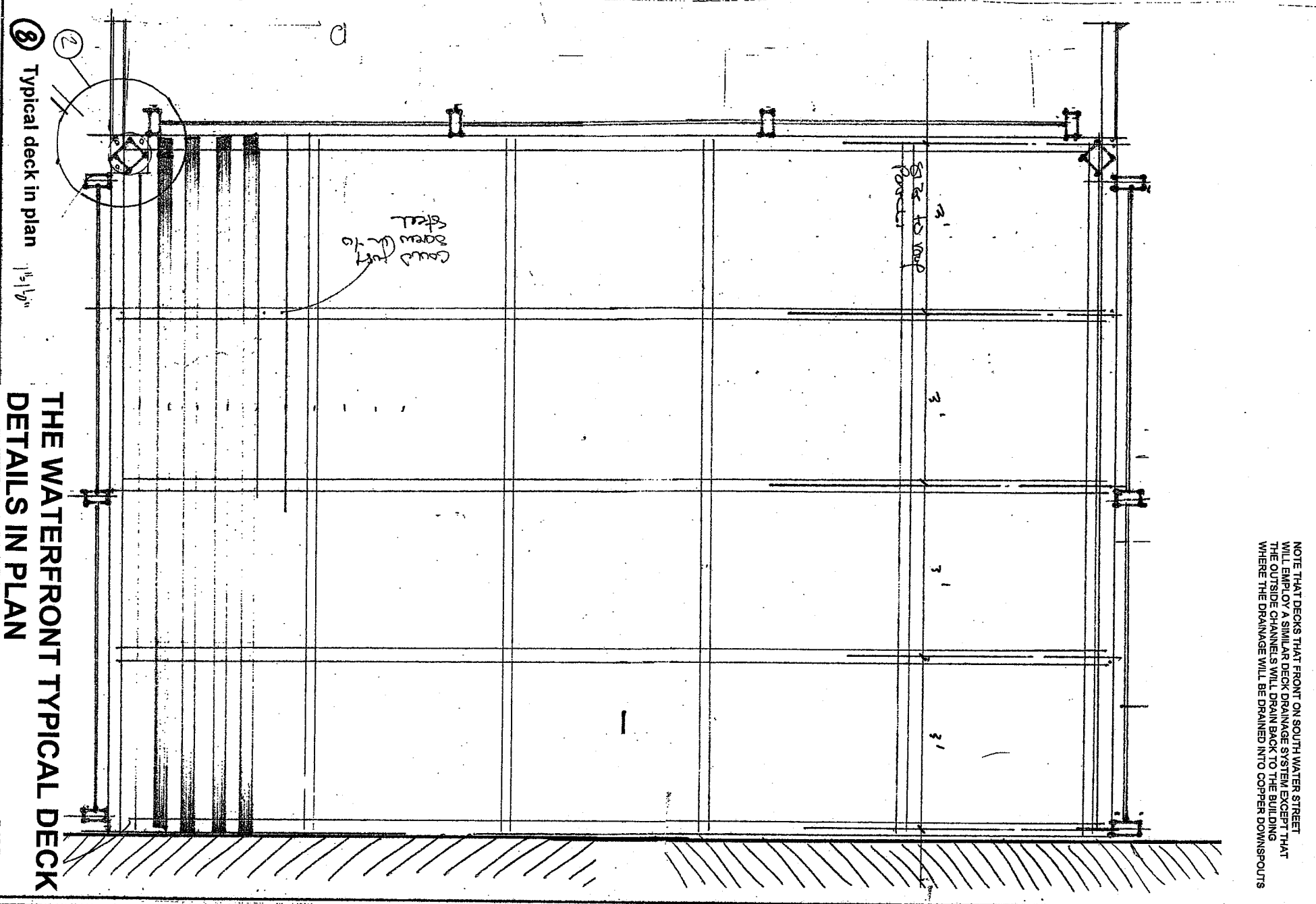


**Plan Detail of River Walk**  
 1/8"=1'-0"

REVISIONS	BY
3/28/02	
5/21/02	
5/24/02	US



10 Plan of the typical structure of a deck. 1/4" = 1'-0"



8 Typical deck in plan 1/4" = 1'-0"

**THE WATERFRONT TYPICAL DECK DETAILS IN PLAN**

NOTE THAT DECKS THAT FRONT ON SOUTH WATER STREET WILL EMPLOY A SIMILAR DECK DRAINAGE SYSTEM EXCEPT THAT THE OUTSIDE CHANNELS WILL DRAIN BACK TO THE BUILDING WHERE THE DRAINAGE WILL BE DRAINED INTO COPPER DOWNSPOUTS

Date	05/24/02
Scale	As Shown
Drawn	GD5
Job	8460.00
Sheet	
Of	Sheets

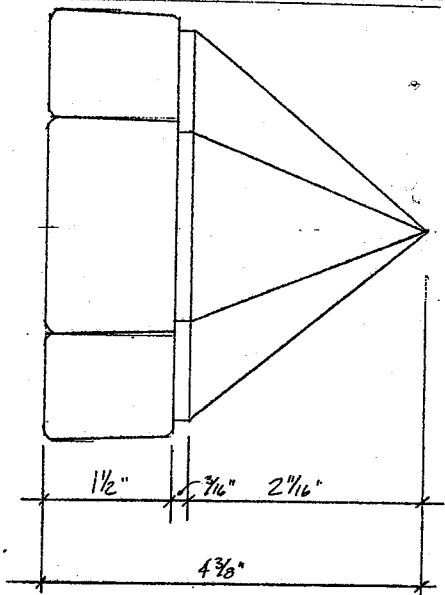
**THE WATERFRONT**

Copyright © 1998  
Renner Architects  
All Rights Reserved.

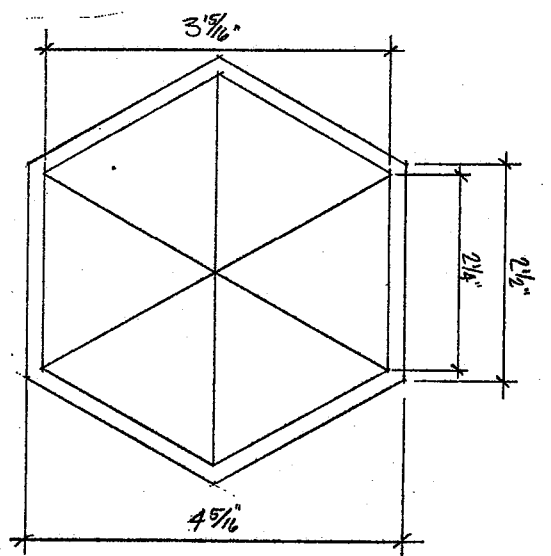
**RENNER**  
architects

architectural solutions  
626 NORTH WATER STREET  
MILWAUKEE, WI 53202  
414 273-6637  
FAX 273-6638

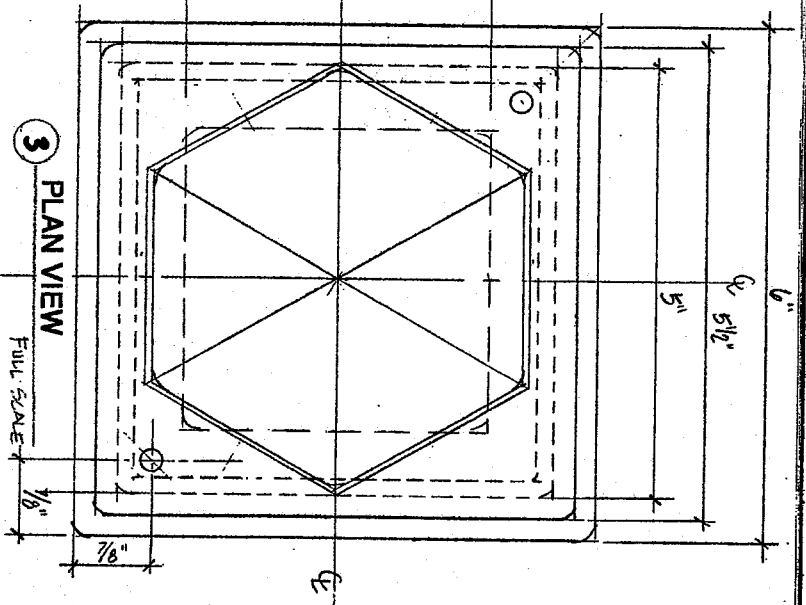
REVISIONS BY



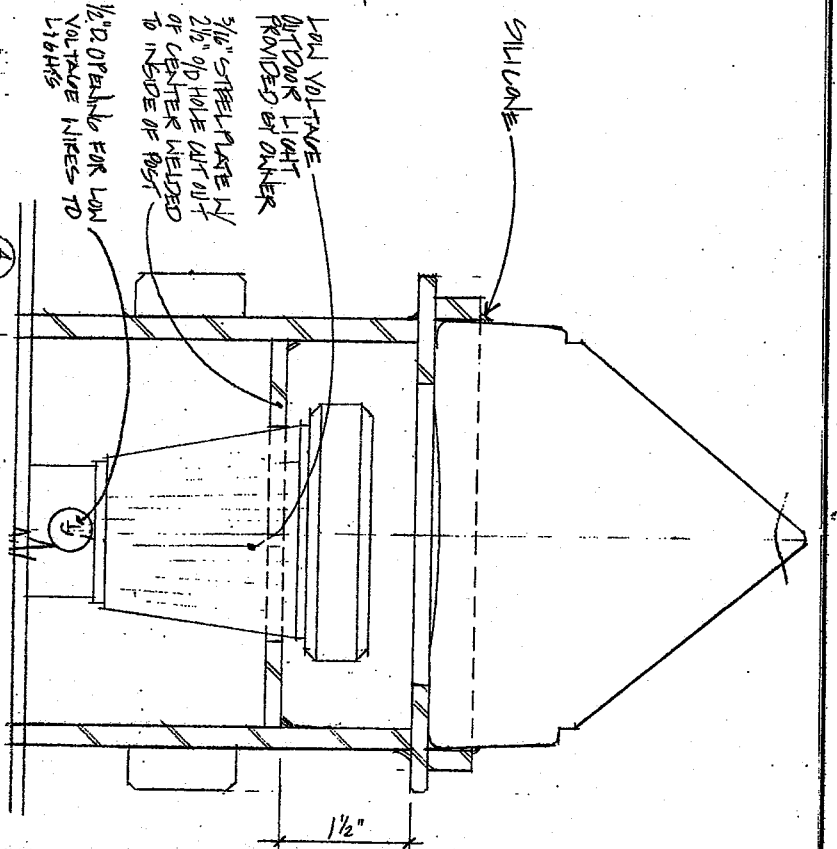
1 GLASS CAP ELEVATION  
FULL SCALE



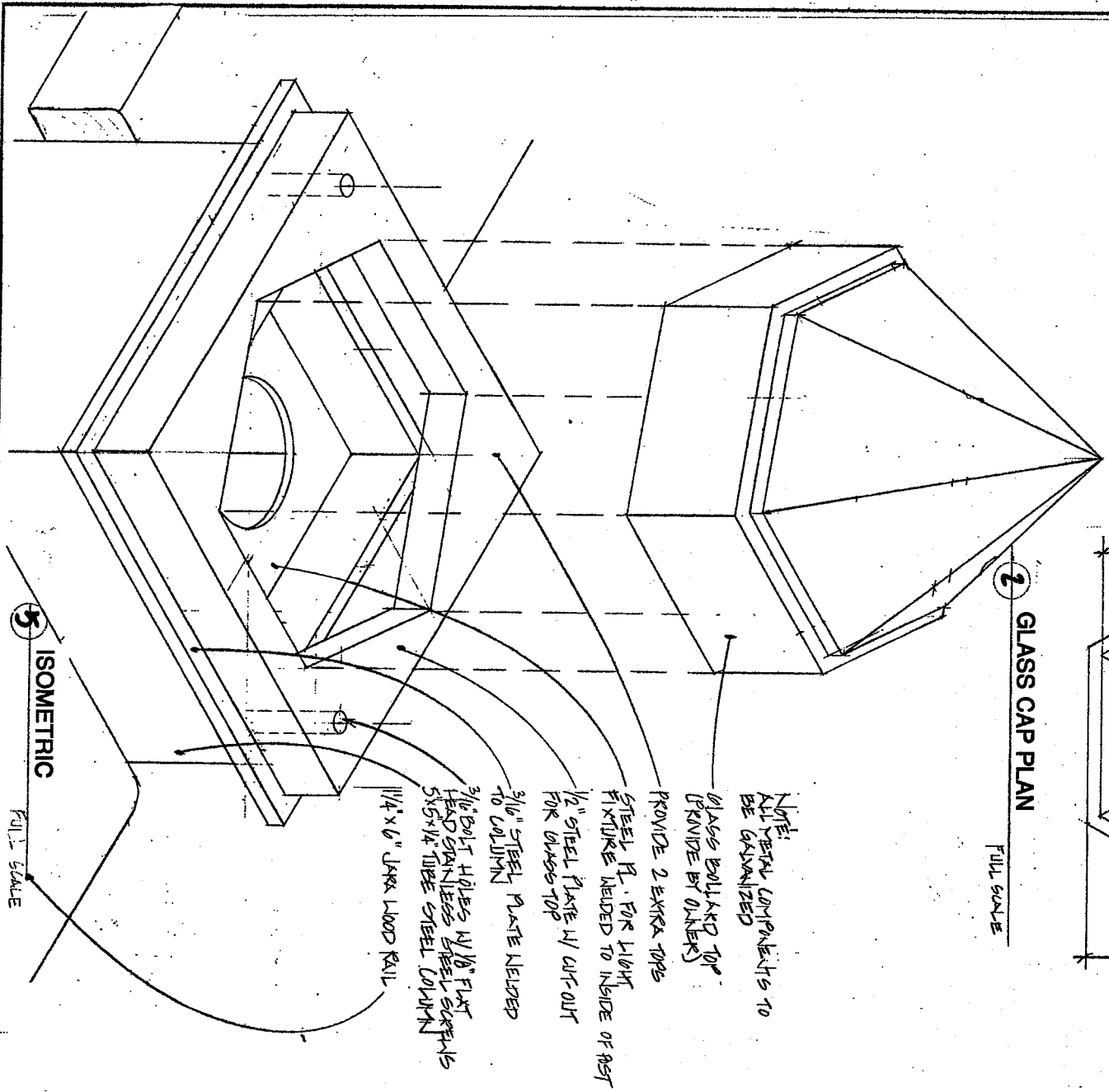
2 GLASS CAP PLAN  
FULL SCALE



3 PLAN VIEW  
FULL SCALE

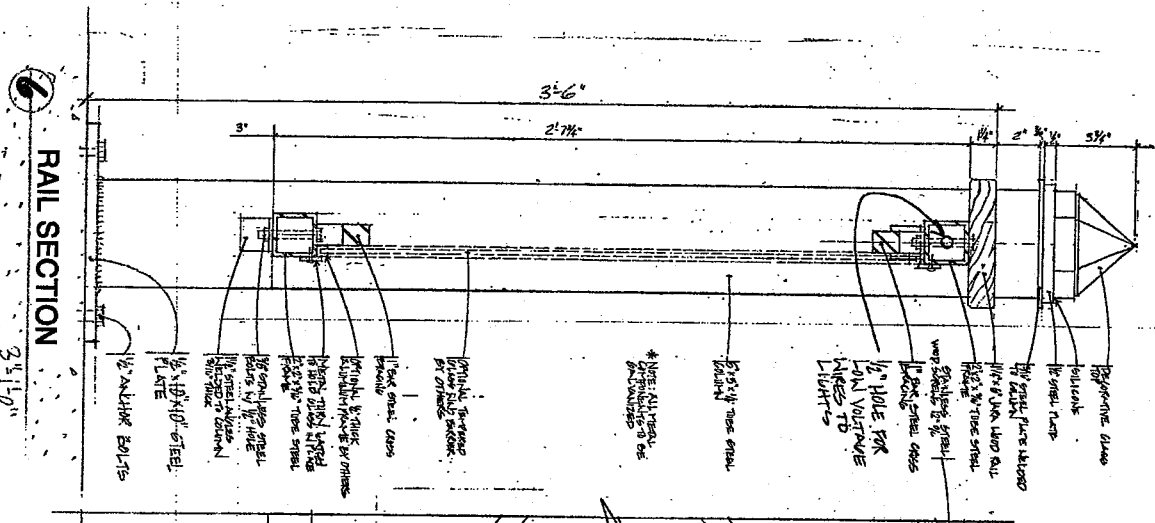


4 SECTION  
FULL SCALE

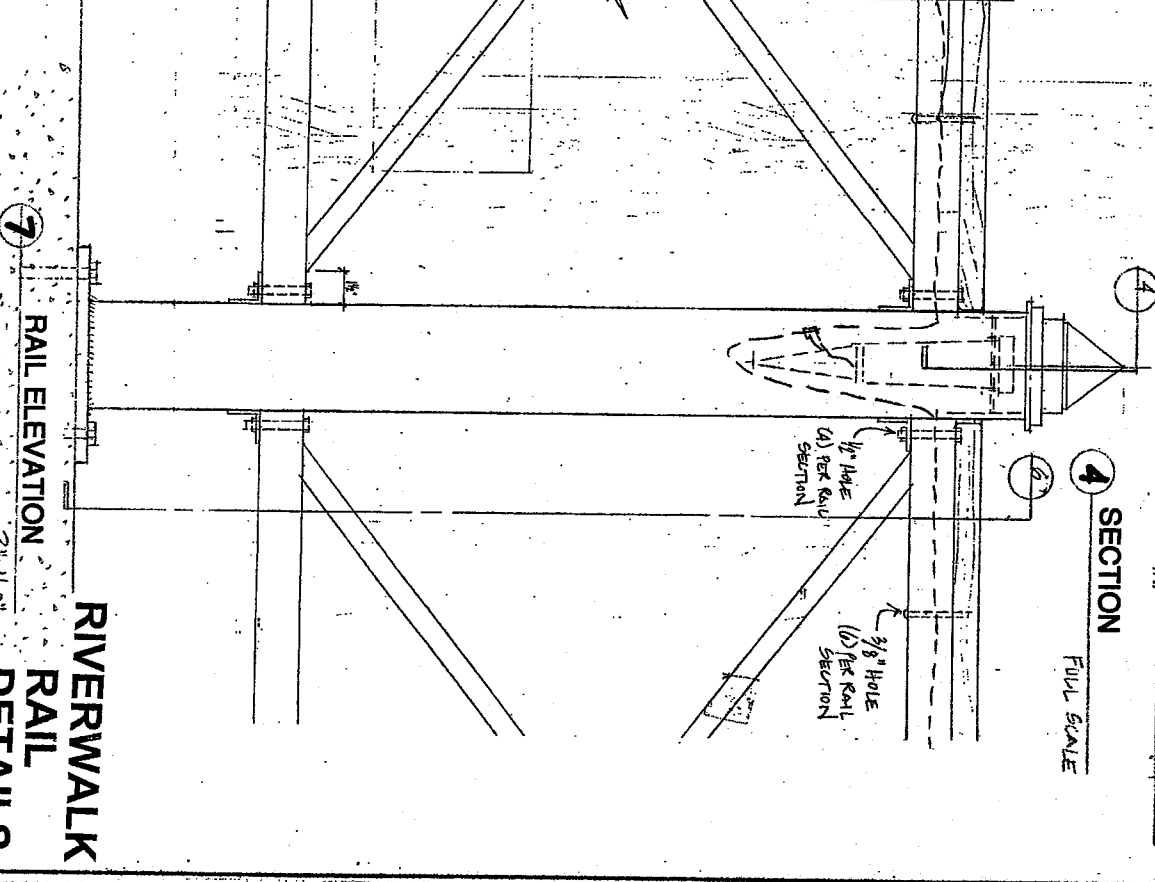


5 ISOMETRIC  
FULL SCALE

NOTE:  
ALL VERTICAL COMPONENTS TO  
BE GALVANIZED  
GLASS BOLTED TO  
PIPE (BY OTHERS)  
PROVIDE 2 EXTRA TOPS  
STEEL P. FOR LIGHT  
FIXTURE HELD TO INSIDE OF RST  
1/2" STEEL PLATE 1/4" CUT-OUT  
FOR GLASS TOP  
3/16" STEEL PLATE HELDED  
TO COLUMN  
3/16" BOLT HOLE IN 1/8" FLAT  
HEAD STAINLESS STEEL SCREWS  
5x5 1/4" TUBE STEEL COLUMN  
1 1/4" x 1/4" DARK WOOD RAIL



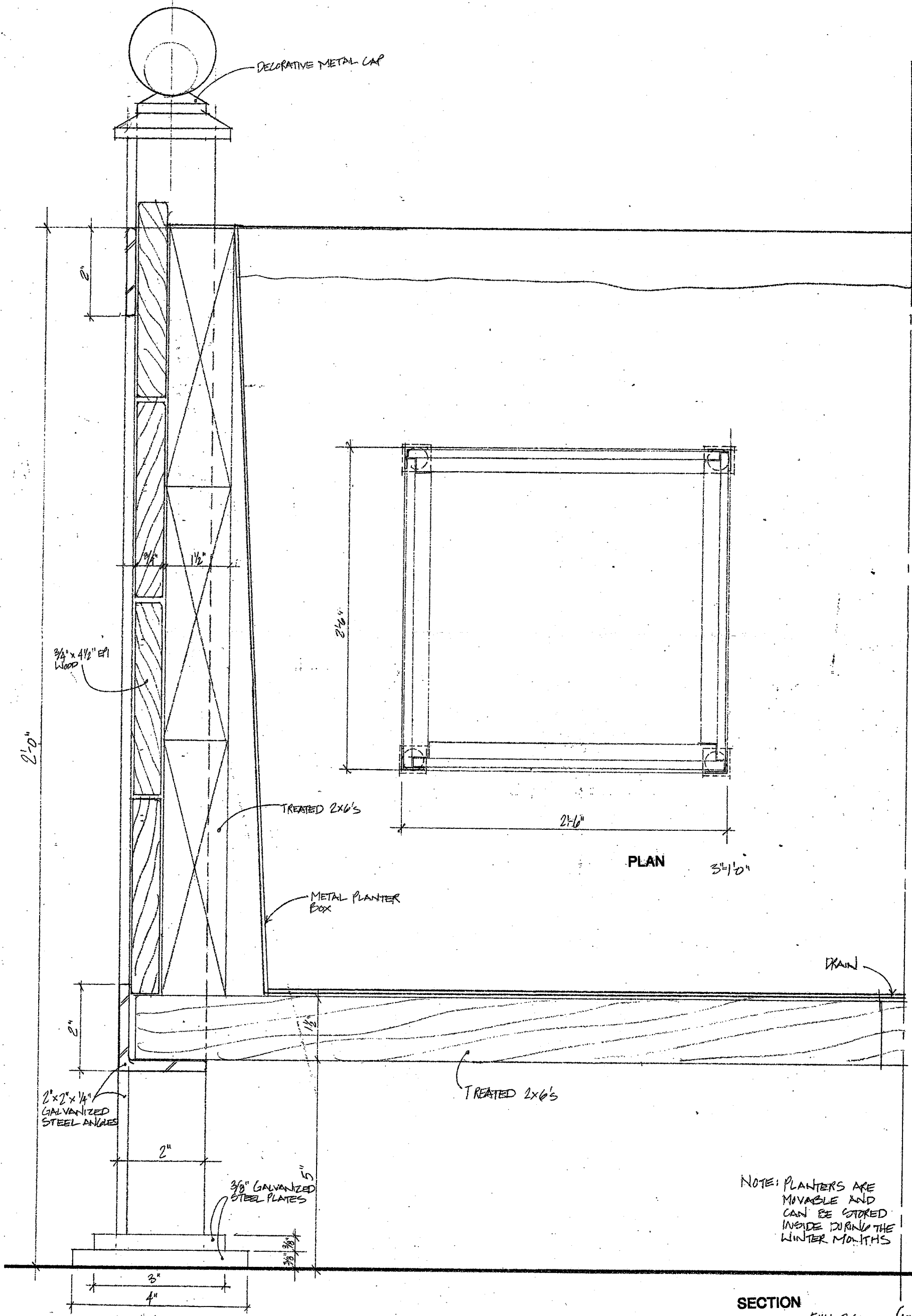
6 RAIL SECTION  
FULL SCALE



7 RAIL ELEVATION  
FULL SCALE

RIVERWALK  
RAIL  
DETAILS

GALVANIZED STEEL AND WOOD PLANTERS



NOTE: PLANTERS ARE MOVABLE AND CAN BE STORED INSIDE DURING THE WINTER MONTHS

SECTION FULL SCALE

01	Steel
02	Shrub

THE WATERFRONT

Copyright © 1998 Renner Architects All Rights Reserved

RENNER architects

architectural solutions 626 NORTH WATER STREET MILWAUKEE, WI 53202 414 273-6637 FAX 273-6638

REVISIONS BY