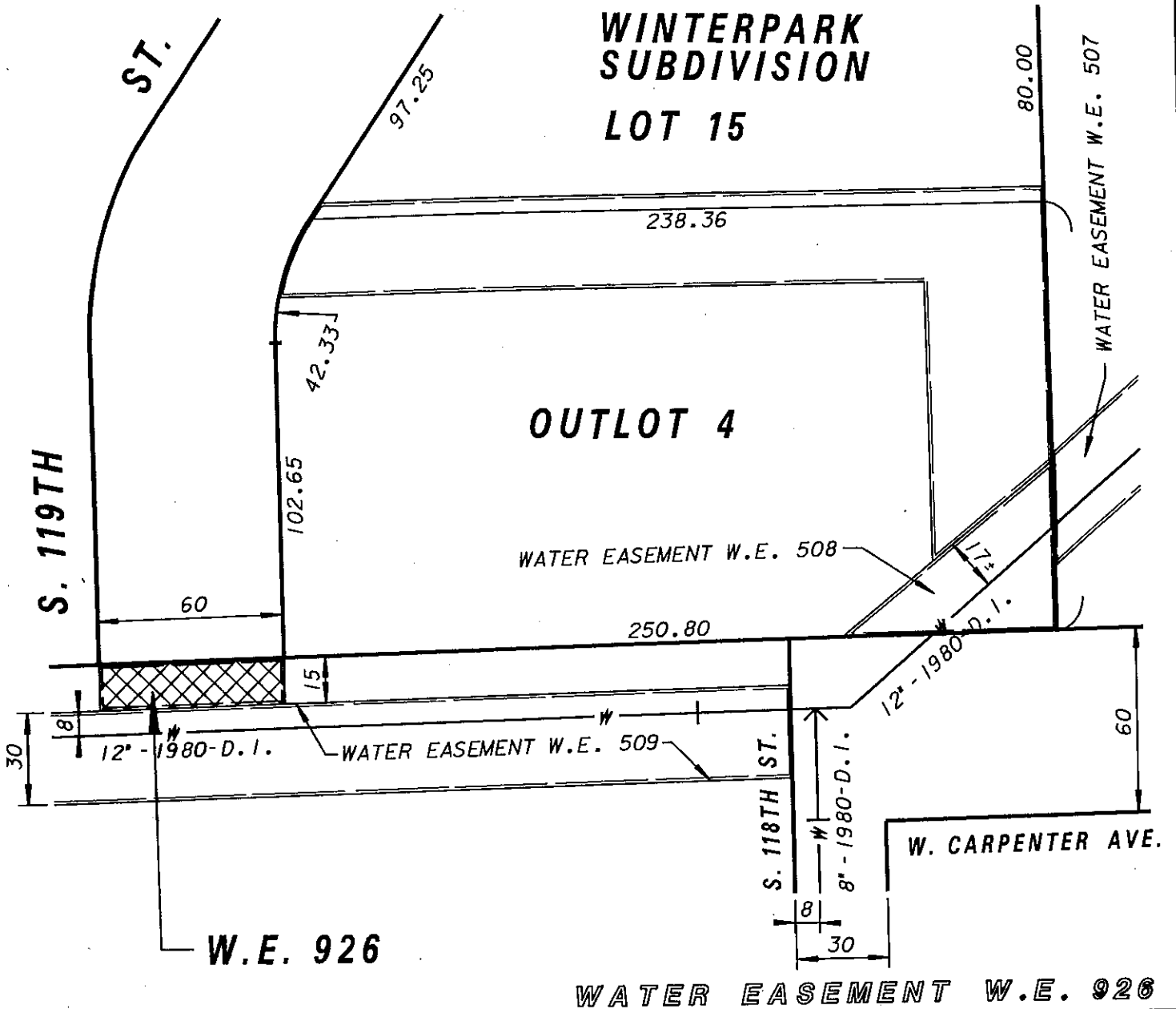


NW. 1/4 OF SEC. 30, T. 6 N., R. 21 E.

WINTERPARK
SUBDIVISION
LOT 15



WATER EASEMENT W.E. 926

Milwaukee
Water Works

Water Engineering

Department of Public Works
Milwaukee, Wisconsin

WATER EASEMENT
WINTERPARK SUBDIVISION

AT SOUTH 119TH STREET
AND WEST CARPENTER AVENUE EXTENDED

SCALE 1" = 50'

1/4 SEC. NO. 611

PLAN DATE 3-20-07

DRAWN BY P.W.P.

CHECKED BY

REVIEWED BY

WORK ORDER WT440066405

APPROVED

DATE

Mel J. Schick 3-21-07
CHIEF DESIGN ENGINEER

Mel J. Schick 3-21-07
FOR CHIEF DESIGN ENGINEER

W. Lewis 4/2/07
SPECIAL DEPUTY COMMISSIONER OF PUBLIC WORKS

SHEET NO. 1 OF 1 PLAN FILE NO. WE926