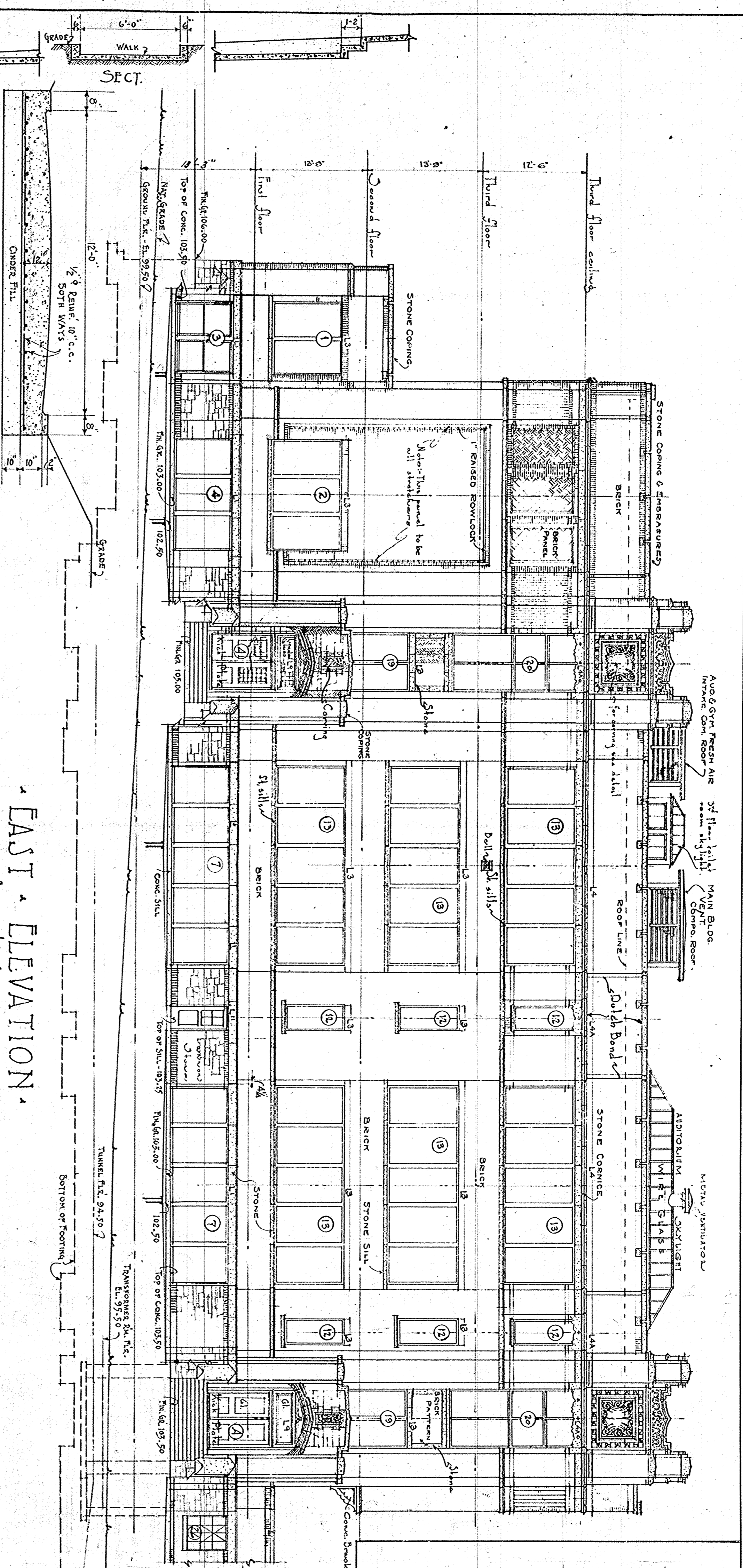


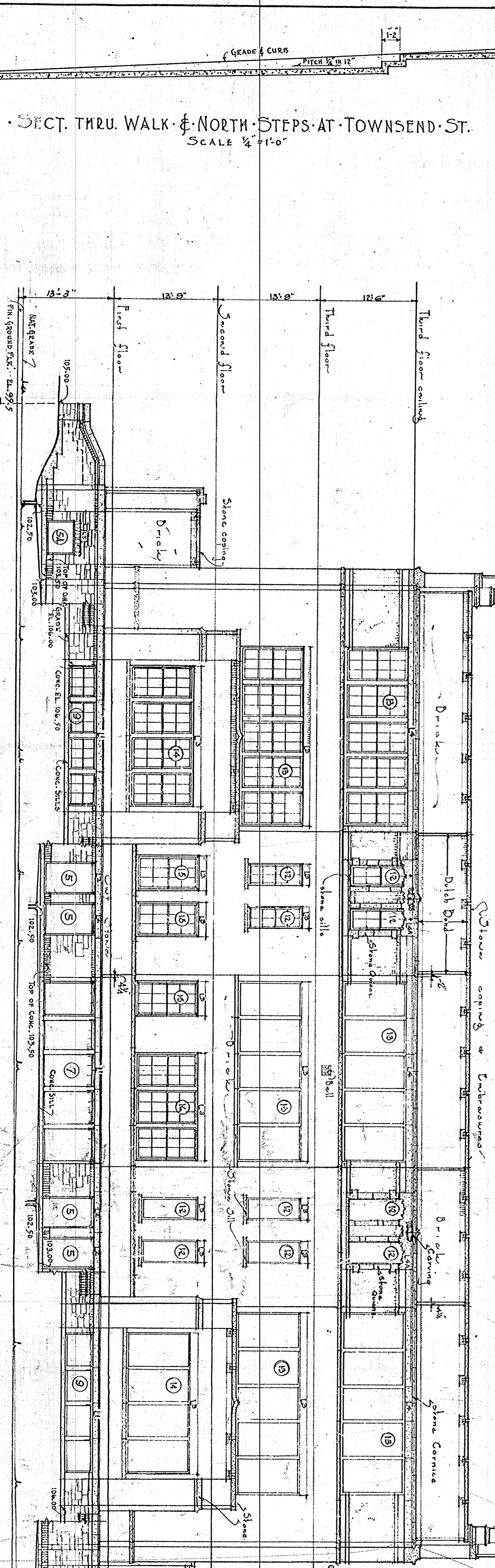
EAST ELEVATION LINTELS	
11	2'-4 1/2" x 7 1/2" L Dated to Conc. Beams
12	3'-3 1/2" x 7 1/2" L Dated to Conc. Beams
13	4'-6 3/8" L Dated to Conc. Beams
14	4'-6 3/8" L Dated to Conc. Beams
15	4'-3 1/2" x 7 1/2" L Dated to Conc. Beams
16	2'-3 1/2" x 7 1/2" L Dated to Conc. Beams
17	1'-3 1/2" x 7 1/2" L Dated to Conc. Beams
18	2'-5 1/2" x 7 1/2" L Dated to Conc. Beams
19	2'-3 1/2" x 7 1/2" L Dated to Conc. Beams
20	4'-6 3/8" L Dated to Conc. Beams
21	2'-7 1/2" x 7 1/2" L Dated to Conc. Beams
22	3'-3 1/2" x 7 1/2" L Dated to Conc. Beams

FOR DETAIL DISTANCE OF ANGLE BELOW CONC. BEAM SEE WINDOW-FRAME DETAILS.

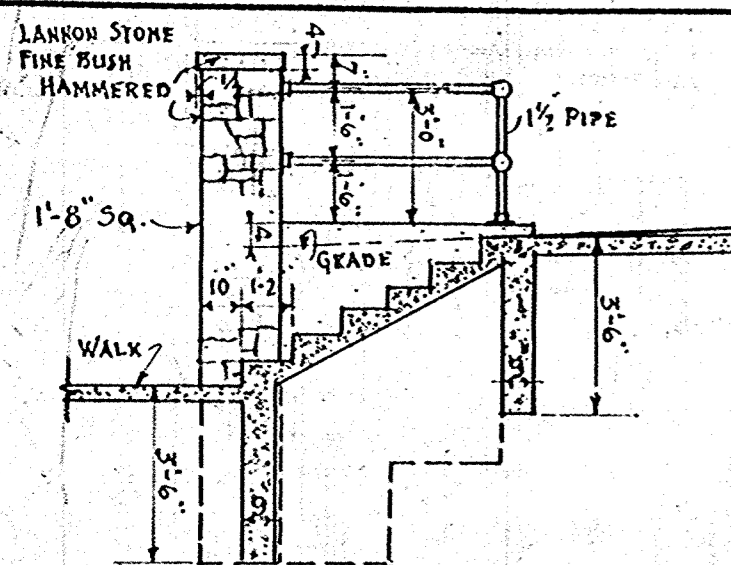


EAST ELEVATION
SCALE 1/8" = 1'-0"

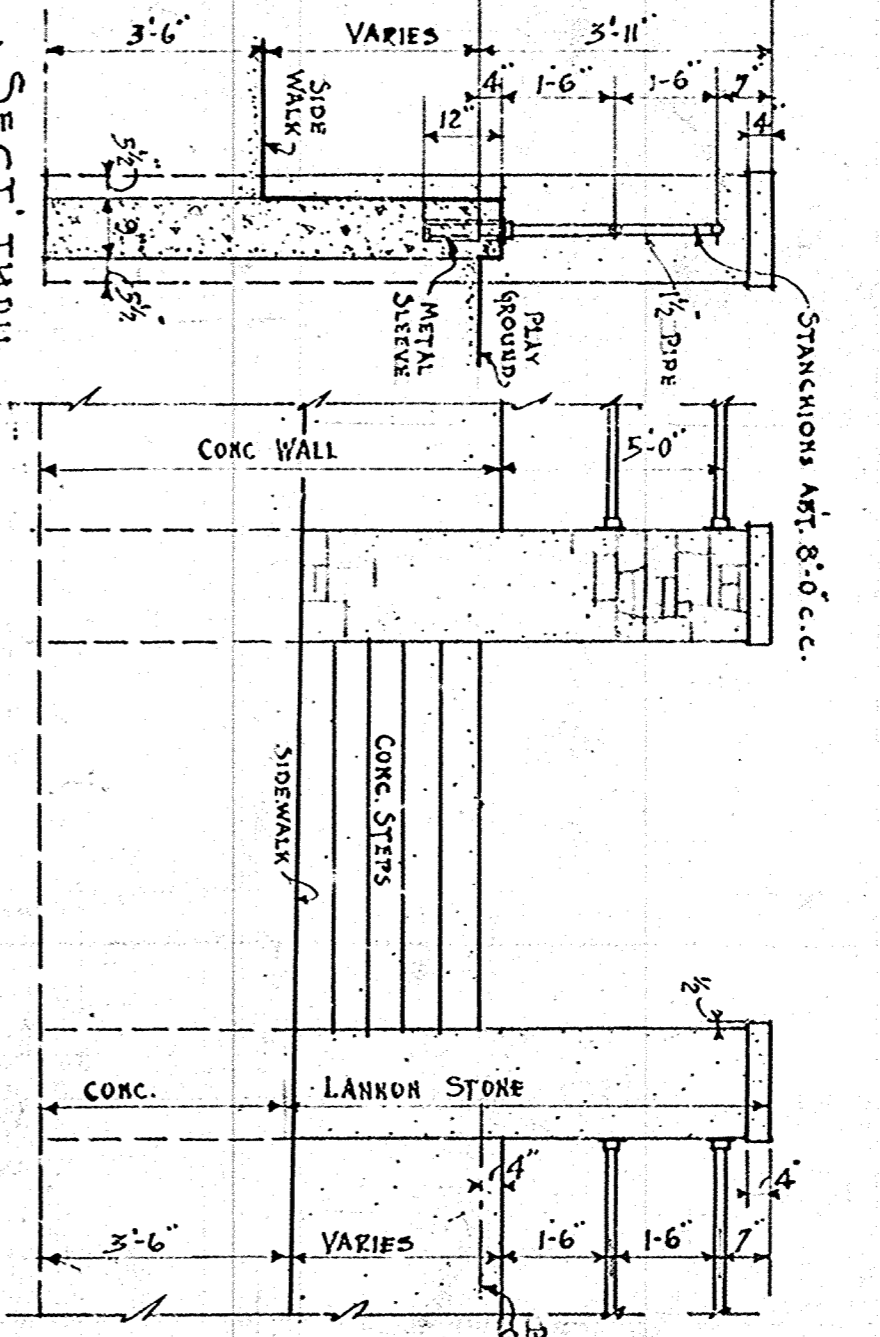
BOILER HOUSE DRIVEWAY
SCALE 1/8" = 1'-0"



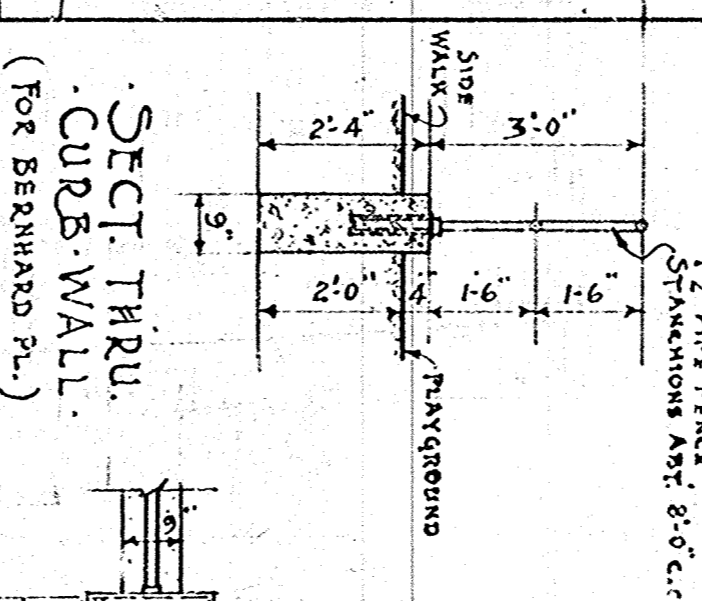
SOUTH ELEVATION
SCALE 1/8" = 1'-0"



SECT. THRU WALK & NORTH STEPS AT TOWNSEND ST.
SCALE 1/8" = 1'-0"



ELEVATION OF NORTH STEPS
(FOR 42 22 ST.)

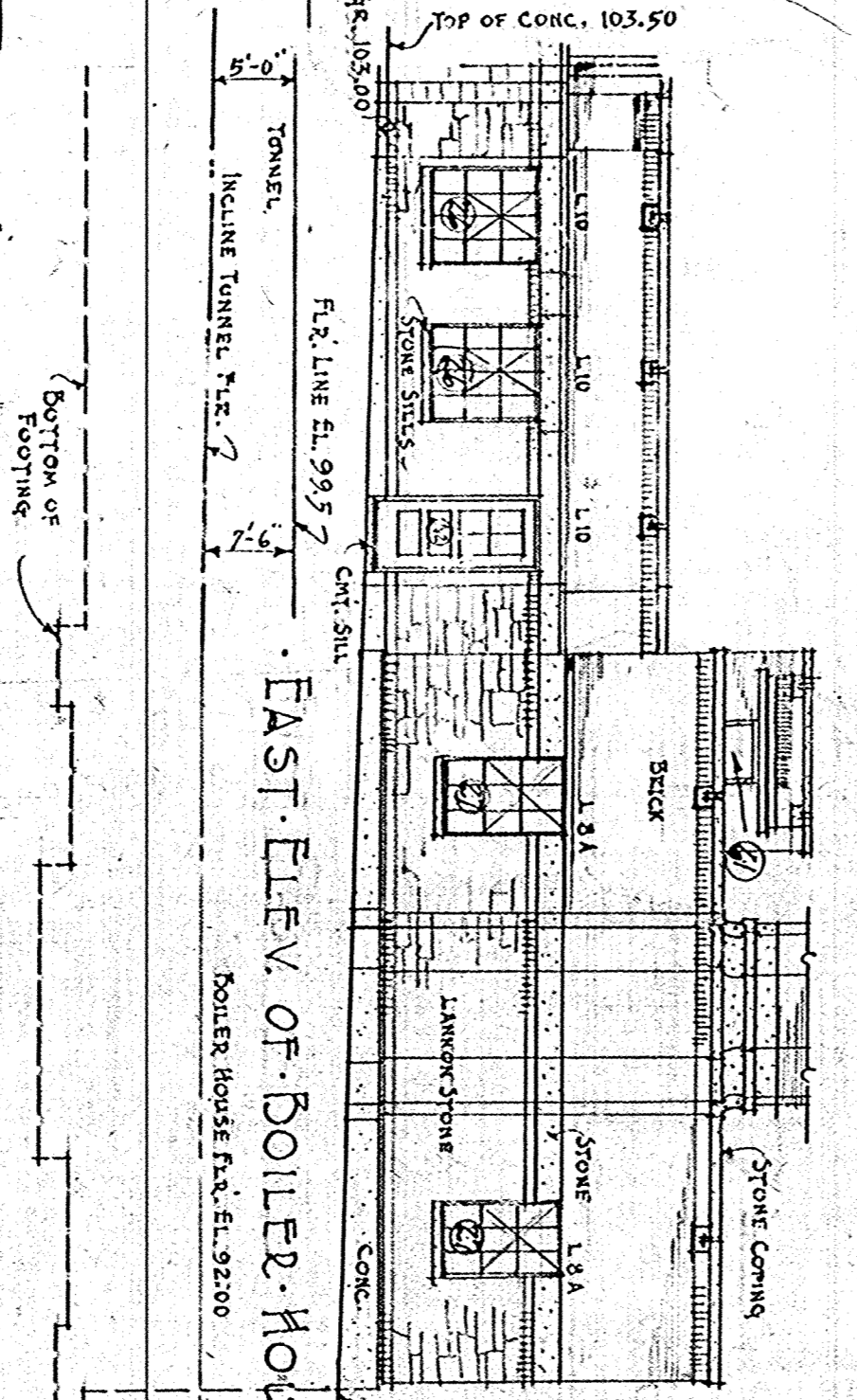


SECT. THRU CURB WALL
(FOR 42 22 ST.)

PLAN OF NORTH STEPS
(FOR 42 22 ST.)

STEP & RETAINING WALL DETAILS
SCALE 1/8" = 1'-0"

SECT. THRU SOUTH STEPS
(FOR 42 22 ST.)



EAST ELEV. OF BOILER HOUSE
SCALE 1/8" = 1'-0"

DATE	DESCRIPTION
August 27	Approved
August 28	Checked
August 29	Reviewed
August 30	Final

TOWNSEND SCHOOL
1104
SCHOOL BOARD ARCHT. DEPT.
101 HIGHLAND AVENUE
MILWAUKEE, WIS.