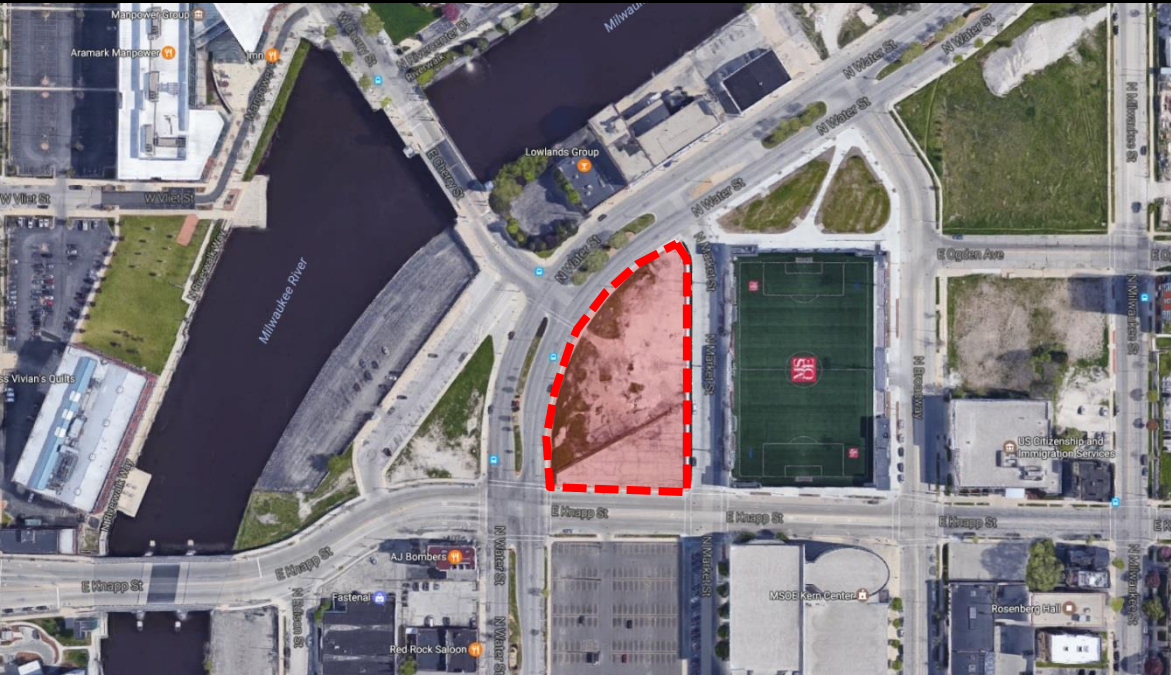


File No. 170407. Substitute resolution relating to a Minor Modification to the Detailed Planned Development known as Block 16 for changes to previously approved building elevations at 210 East Knapp Street, in the block bounded by East Knapp Street, North Market Street and North Water Street, in the 3rd Aldermanic District.





epstein uhen : architects
 milwaukee 333 East Chicago Street
 Milwaukee, Wisconsin 53202
 telephone 414.271.5000
 madison 335 West Avenue Street, Suite 202
 Madison, Wisconsin 53703
 telephone 608.442.5000

DALGLISH GILPIN PAXTON ARCHITECTS
 ARCHITECTS - INTERIORS - RESTAURANTS - LANDSCAPE ARCHITECTS
 224 West Chestnut
 Chestnut Street, Suite 2200
 Philadelphia, PA 19106
 P 484.246.8700
 info@dalGLISH.com

PROJECT INFORMATION

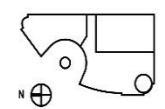
MILWAUKEE OFFICE BUILDING

210 E. Knapp Street
 Milwaukee, WI

ISSUANCE

DPD MINOR MODIFICATION

KEY PLAN



SHEET INFORMATION

PROJECT MANAGER ER
 PROJECT NUMBER 215522-01
 DATE 06/19/2017

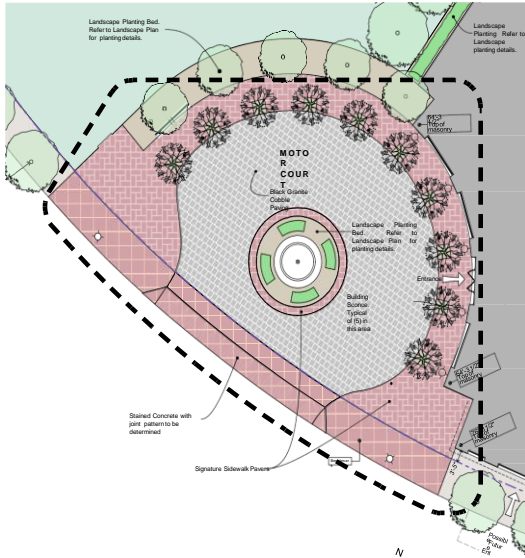
COMPARATIVE VIEWS - SOUTHWEST CORNER



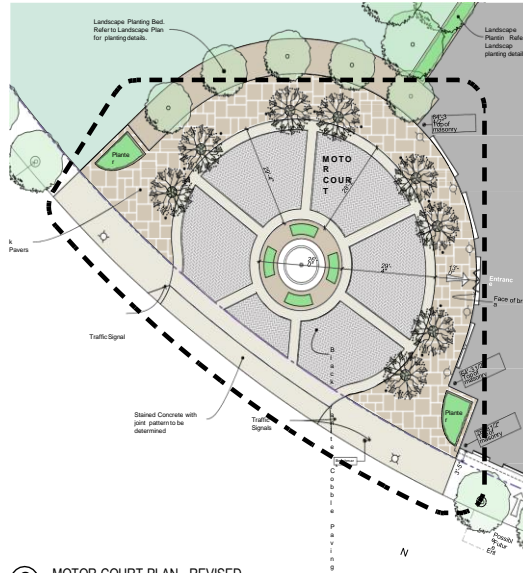
1 SOUTHWEST DOME VIEW - APPROVED DPD SUBMITTAL



2 SOUTHWEST DOME VIEW - REVISED DESIGN



1 MOTOR COURT PLAN - APPROVED DPD SUBMITTAL



2 MOTOR COURT PLAN - REVISED DESIGN



3 MOTOR COURT CANOPIES - APPROVED DPD SUBMITTAL



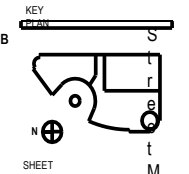
4 MOTOR COURT CANOPIES - REVISED DESIGN

MILWAUKEE 333 East Chicago Street
MILWAUKEE, WISCONSIN 53202 Telephone 414.271.5200
MADISON 309 West Johnson Street, Suite 202 Madison, Wisconsin 53703 Telephone 608.442.6300

MILWAUKEE OFFICE BUILDING

2
1
0

PROJECT INFORMATION E
ISSUANCE K
DPD MINOR MODIFICATION a
p
p



SHEET M
PROJECT I E
MANAGER T R
PROJECT 215522
NUMBER 01 W
DATE 08/19/2
017 U
COMPARATIVE k
A E VIEWS - e
MOTOR e
COURT & W
CANOPIES I



eppstein uhen : architects
 1100 Lakeside Drive
 333 East Chicago Street
 Milwaukee, Wisconsin 53202
 telephone 414.271.2000
 fax 414.271.2001
 website www.eppsteinuhen.com

DALGLISH GILPIN PATTON ARCHITECTS
 100 West Wisconsin Avenue
 1000 North Dearborn Street, Suite 200
 Madison, Wisconsin 53703
 telephone 608.442.0000
 website www.dgpa.com

PROJECT INFORMATION

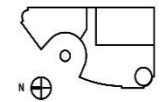
MILWAUKEE OFFICE BUILDING

210 E. Knapp Street
 Milwaukee, WI

ISSUANCE

DPD MINOR MODIFICATION

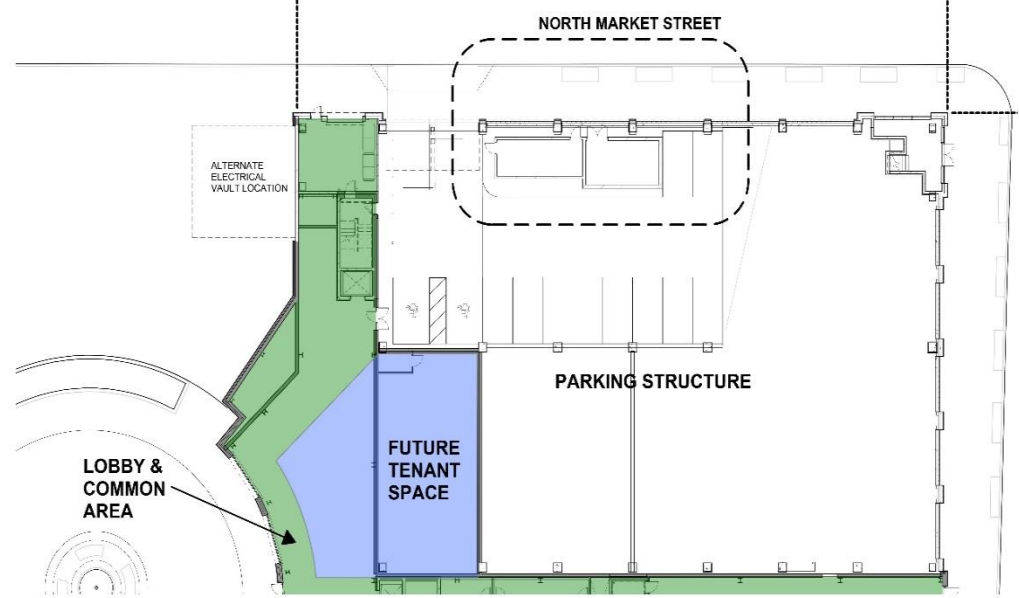
KEY PLAN



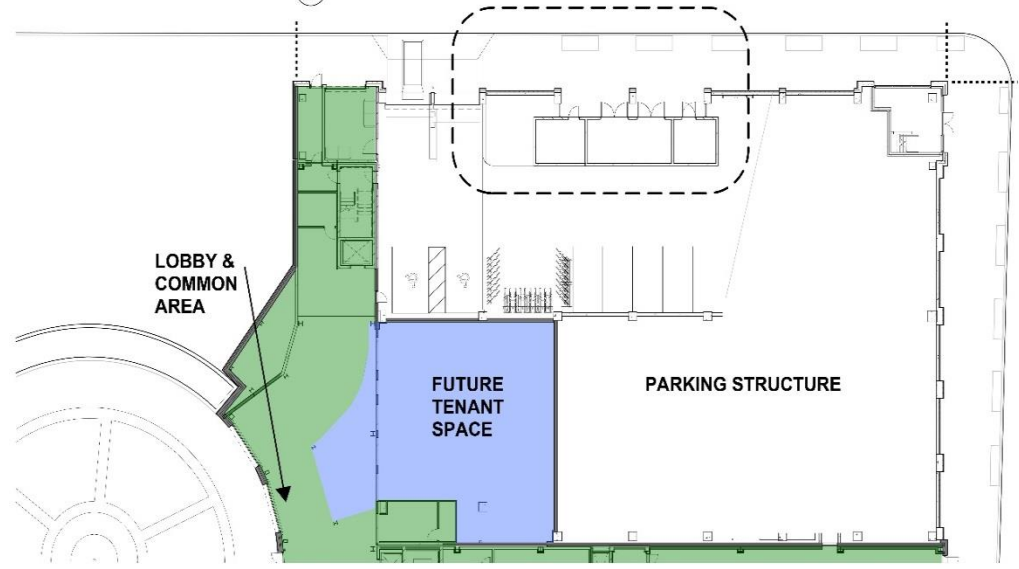
SHEET INFORMATION

PROJECT MANAGER	ER
PROJECT NUMBER	215522-01
DATE	06/19/2017

COMPARATIVE VIEWS - ELECTRICAL VAULT PLANS



1 ELECTRICAL VAULT PLAN - APPROVED DPD SUBMITTAL



2 ELECTRICAL VAULT PLAN - REVISED DESIGN



epstein uhen : architects

milwaukee 333 East Chicago Street
Milwaukee, Wisconsin 53202
telephone 414.271.5300
madison 1516 West Johnson Street, Suite 202
Madison, Wisconsin 53713
telephone 608.442.5300

DALGLISH GULPIN PAXTON ARCHITECTS
ARCHITECTURE INTERIOR DESIGNATION PLANNING INTERIOR DESIGN
208 Park Street, 4th
Charlottesville Virginia 22902
T 434.977.4444
F 434.294.8720
info@dalgroup.com

PROJECT INFORMATION

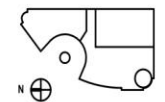
MILWAUKEE OFFICE BUILDING

210 E. Knapp Street
Milwaukee, WI

ISSUANCE

DPD MINOR MODIFICATION

KEY PLAN

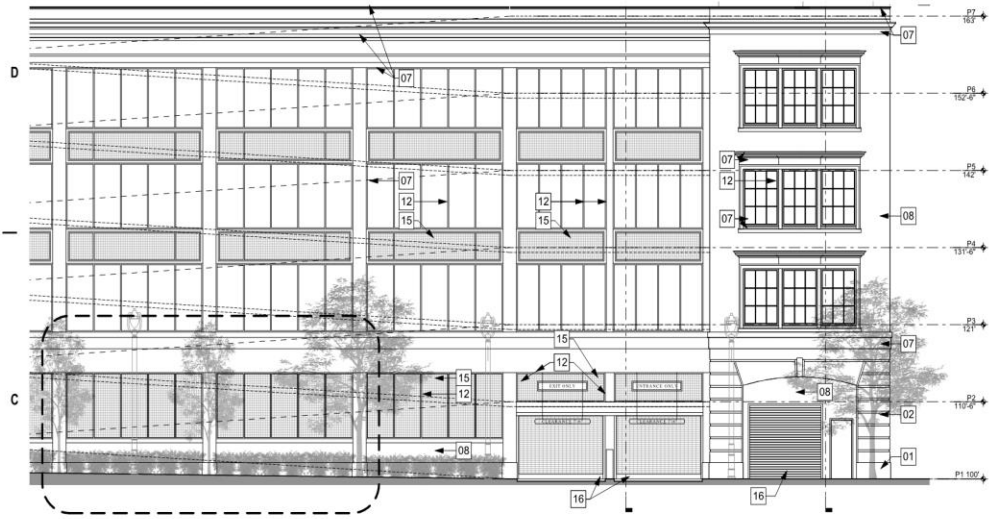


SHEET INFORMATION

PROJECT MANAGER ER
PROJECT NUMBER 215522-01
DATE 06/19/2017

COMPARATIVE VIEWS - ELECTRICAL ELEVATIONS & RENDERINGS

A-4



1 EAST ELEVATION - APPROVED DPD SUBMITTAL



2 SOUTHEAST VIEW - APPROVED DPD SUBMITTAL



3 EAST ELEVATION - REVISED DESIGN
SCALE 1/8" = 1'-0"



4 SOUTHEAST VIEW - REVISED DESIGN



epstein uhen : architects

milwaukee 333 East Chicago Street
Milwaukee Wisconsin 53202 telephone 414. 271.
5300
madison 309 West Johnson Street, Suite
202
Madison Wisconsin 53
703
telephone 608. 442. 5300

DALGLEISH GILPIN PANTON ARCHITECTS
ARCHITECTS • INTERIOR DESIGNERS • PLANNERS • ENVIRONMENTAL DESIGNERS
206 First Street NE
Columbus Georgia 31906
tel 706. 446.
4314 fax 706. 470.
dalgleishgipinpanton.com

PROJECT
MILWAUKEE
OFFICE BUILDING

210 E. Knapp
Street Milwaukee,
WI

ISSUANCE
DPD MINOR
MODIFICATION

KEY

SHEET

PROJECT E
MILWAUKEE R
PROJECT 215522-
NUMBER 11
DATE 06/19/2011

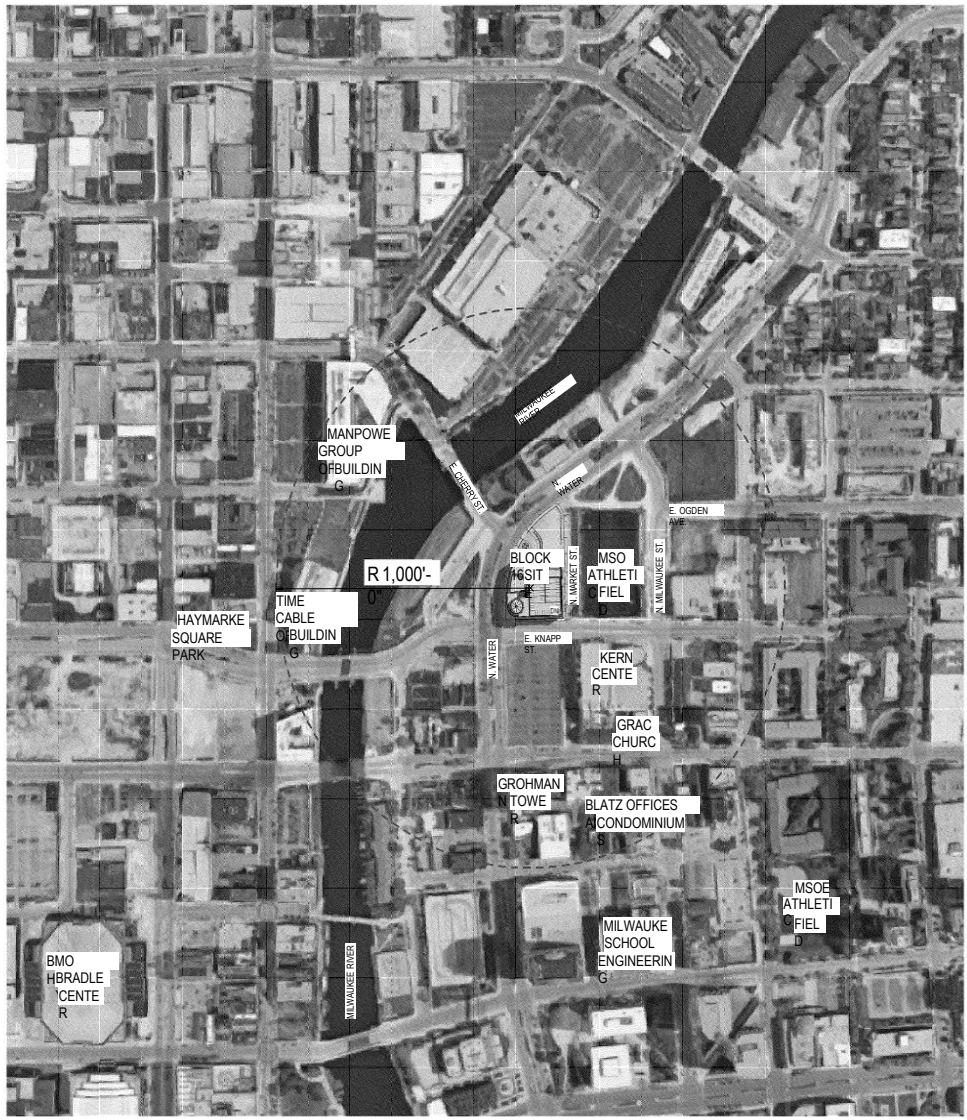
VICINITY
MAP

B-

© Epstein Uhen Architects



MILWAUKEE AREA
MAP



VICINITY
MAP

1



epstein uhen : architects

milwaukee 333 East Chicago Street
Milwaukee, Wisconsin 53202
telephone 414.271.5000
madison 336 West Avenue Street, Suite 202
Madison, Wisconsin 53703
telephone 608.442.5000

DALGLISH GILPIN PAXTON ARCHITECTS
ARCHITECTS - INTERIORS - RESTAURANTS - LANDSCAPE ARCHITECTS
224 West Chestnut
Charlestown, Virginia 22062
703.597.8400
F 703.296.8700
info@dalGLISH.com

PROJECT INFORMATION

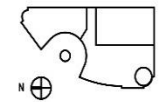
MILWAUKEE OFFICE BUILDING

210 E. Knapp Street
Milwaukee, WI

ISSUANCE

DPD MINOR MODIFICATION

KEY PLAN



SHEET INFORMATION

PROJECT MANAGER ER
PROJECT NUMBER 215522-01
DATE 06/19/2017

SOUTHWEST FACADE LIGHTING





eppstein uhen : architects

milwaukee 333 East Chicago Street
Milwaukee, Wisconsin 53202
telephone 414.271.3000
madison 3305 West Avenue Street, Suite 202
Madison, Wisconsin 53703
telephone 608.442.3000

DALGLEISH GILPIN PAXTON ARCHITECTS
ARCHITECTS - INTERIORS - RESTAURANTS - LANDSCAPE ARCHITECTS
224 West Chestnut
Charlestown, Virginia 22062
703.597.8800
F 703.296.8700
info@dalgleish.com

PROJECT INFORMATION

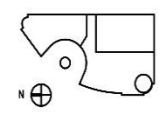
MILWAUKEE OFFICE BUILDING

210 E. Knapp Street
Milwaukee, WI

ISSUANCE

DPD MINOR MODIFICATION

KEY PLAN



SHEET INFORMATION

PROJECT MANAGER ER
PROJECT NUMBER 215522-01
DATE 06/19/2017

**MOTOR COURT
PHASE II FACADE
LIGHTING**

A



PROJECT INFORMATION

MILWAUKEE OFFICE BUILDING

210 E. Knapp Street
Milwaukee, WI

ISSUANCE

DPD SUBMITTAL

KEY PLAN



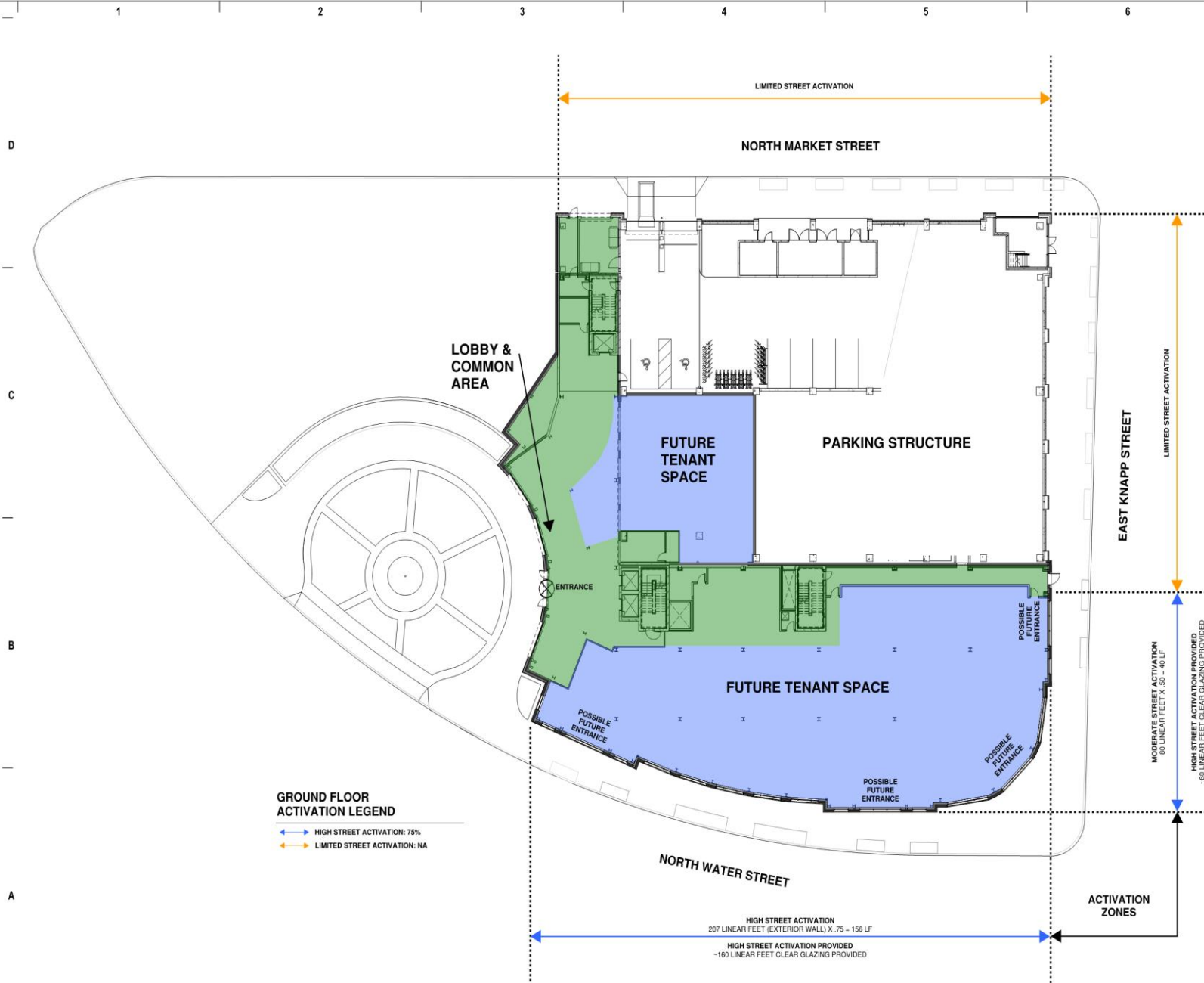
SHEET INFORMATION

PROJECT MANAGER ER

PROJECT NUMBER 215522-01

DATE 06.19.2017

STREET ACTIVATION PLAN





eppstein uhen : architects

Milwaukee 333 East Chicago Street
MILWAUKEE, WISCONSIN 53202
TEL: 414.224.1100 FAX: 414.224.1101
WWW.EUA.COM

DALLAS/IRVING/PHILADELPHIA
DALLAS, TEXAS 75201
IRVING, TEXAS 75039
PHILADELPHIA, PENNSYLVANIA 19106
WWW.EUA.COM

Hammes Company

The shortest distance between idea and reality

Pinnacle Engineering Group

1000 W. Wisconsin Avenue
Suite 200
Milwaukee, WI 53233
TEL: 414.224.1100 FAX: 414.224.1101
WWW.PINNACLE-ENG.COM

PROJECT

MILWAUKEE
OFFICE BUILDING

210 E. Knapp
Street
Milwaukee, WI

ISSUANCE

DPD
SUBMITTAL

1411C LSC/JSP/JUN

KEY



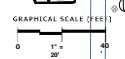
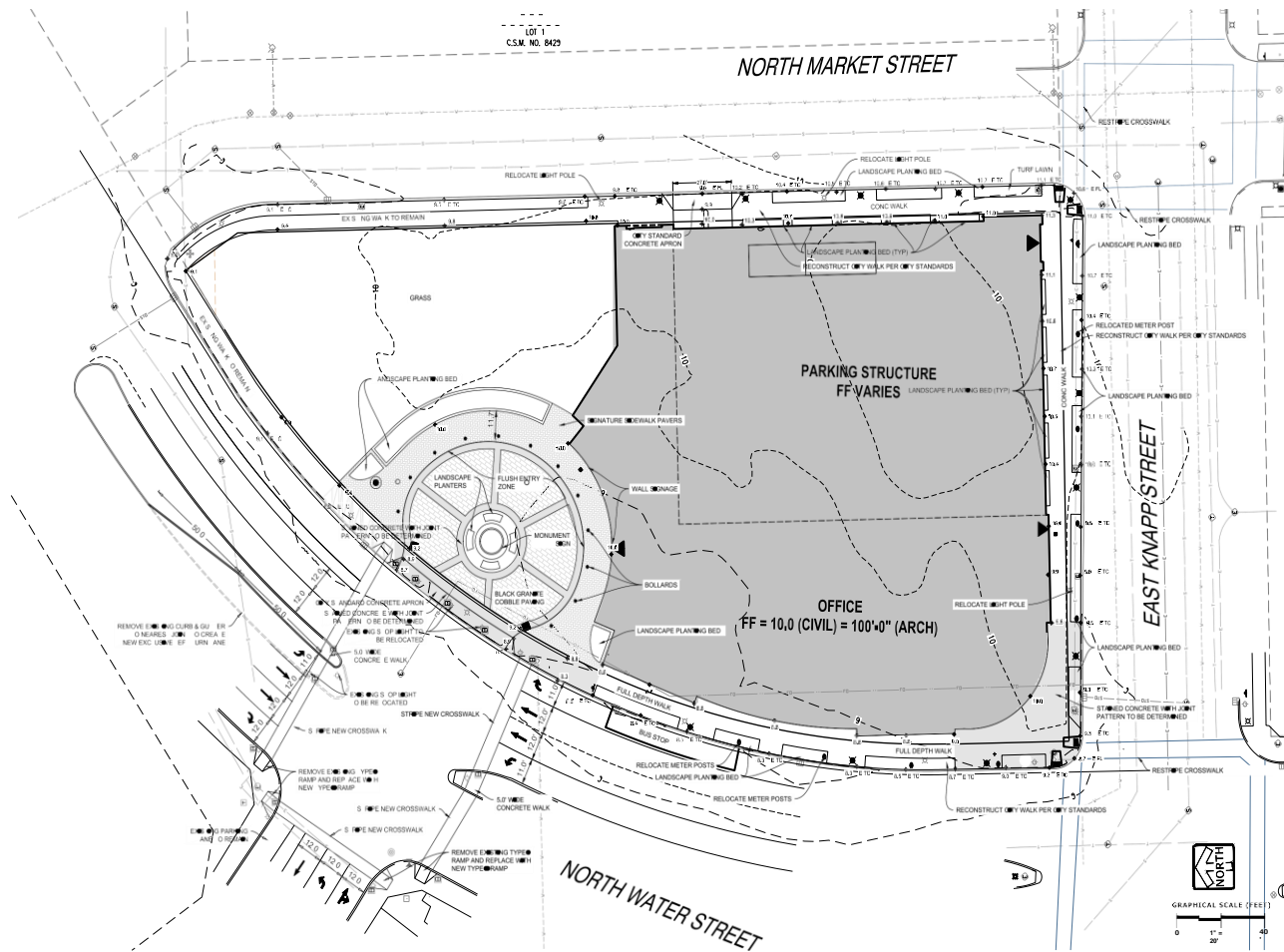
SHEET

PROJECT AE
MANAGER K
PROJECT NUMBER 21552C
NUMBER 01
DATE 08.19.2011

SPOT GRADE

E

12



PROJECT INFORMATION

MILWAUKEE OFFICE
 BUILDING

210 E. Knapp Street
 Milwaukee, WI

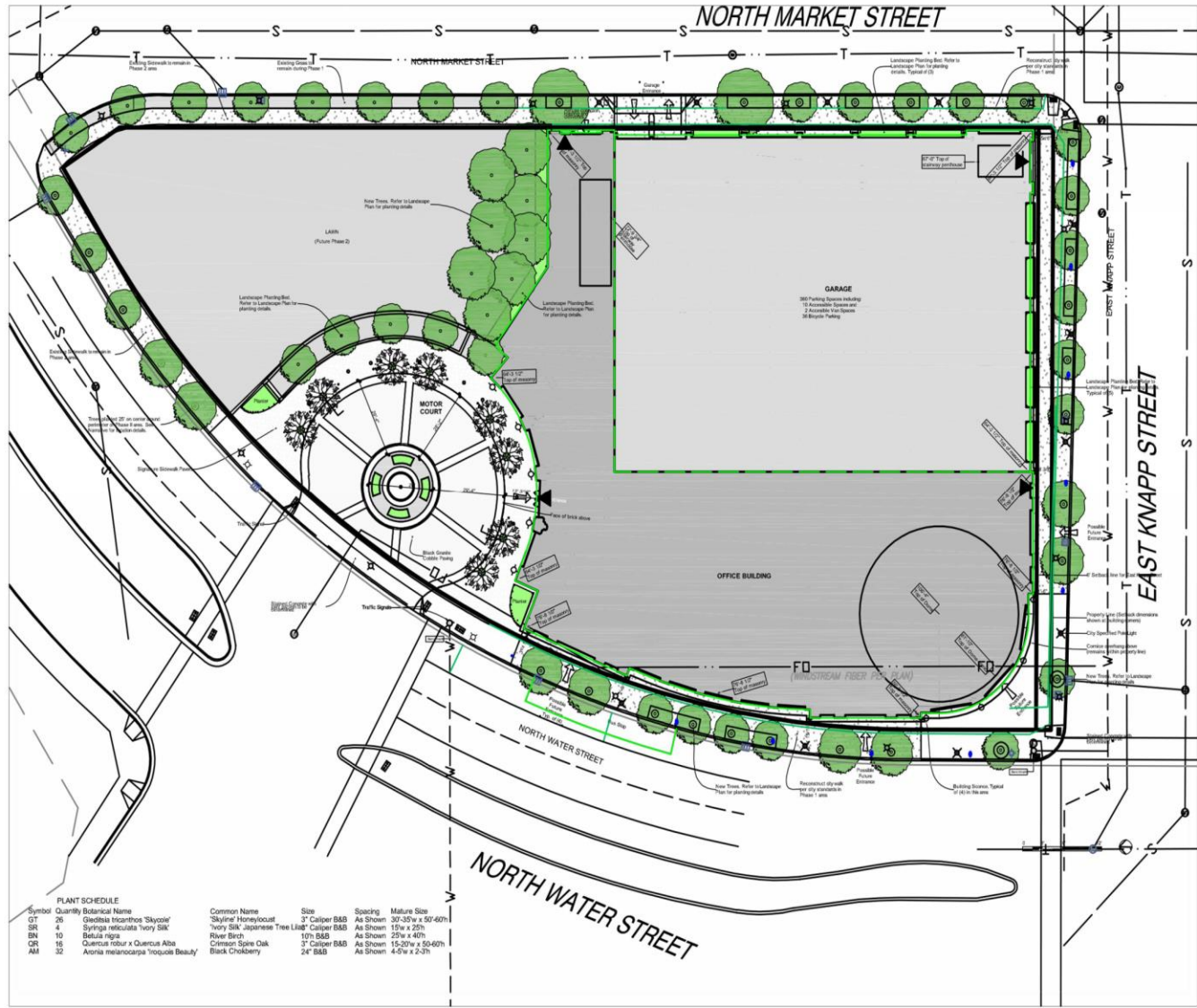
ISSUANCE
 DPD MINOR MODIFICATION

KEY PLAN



SHEET INFORMATION

PROJECT MANAGER
 PROJECT NUMBER 215
 DATE 06/11
 Landscape Plan



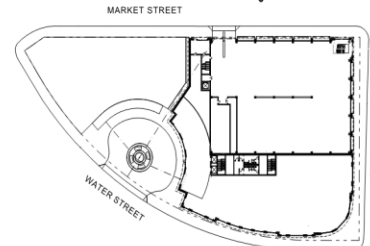
PLANT SCHEDULE

Symbol	Quantity	Botanical Name	Common Name	Size	Spacing	Mature Size
GT	26	Gleditsia triacanthos 'Skyline'	'Skyline' Honeylocust	3" Caliper B&B	As Shown	30'-35'w x 30'-60'h
SR	4	Syringa reticulata 'Ivory Silk'	'Ivory Silk' Japanese Tree Lilac	Caliper B&B	As Shown	15'w x 25'h
BA	10	Betula nigra	River Birch	1 1/2" B&B	As Shown	25'w x 40'h
QR	16	Quercus robur x Quercus Alba	Crimson Spire Oak	3" Caliper B&B	As Shown	15-20'w x 50-60'h
AM	32	Aronia melanocarpa 'Violette Beauty'	Black Chokeberry	2 1/2" B&B	As Shown	4-5'w x 2-3'h

1 2 3 4 5 6

1 2 3 4 5 6

KEYNOTE MATERIAL INDEX	
01 GRANITE WATERTABLE	12 BRONZE ANODIZED ALUMINUM STOREFRONT FRAMES WITH NO GLAZING
02 RUSTICATED BRICK	13 BRONZE ANODIZED WINDOWS WITH CLEAR GLAZING
03 BRICK SEGMENTAL ARCH	14 PRE-FINISHED METAL RAILING
04 BRICK JACK ARCH	15 PRE-FINISHED METAL SCREENING
05 BRICK KEYSTONE	16 PRE-FINISHED METAL OVERHEAD COILING DOOR
06 ARCHITECTURAL CAST STONE ELLIPTICAL ARCH	17 PRE-FINISHED METAL SCREEN WALL
07 ARCHITECTURAL CAST STONE	18 BRONZE SIGNAGE
08 BRICK	19 CARVED INCISED TEXT
09 ZINC COATED ROOFING	20 ARCHITECTURAL WALL SCORCE
10 ZINC COATED OCLUSUS WITH GLAZING	21 CITY SPECIFIED POLE LIGHTS
11 LEVELS 1 & 6 - BRONZE ANODIZED ALUMINUM STOREFRONT WITH CLEAR GLAZING	22 CLEAR GLAZING
11 LEVELS 2 - 4 - BRONZE ANODIZED ALUMINUM STOREFRONT WITH CLEAR GLAZING & SPANDREL PANELS	23 TEMPERED SAFETY CLEAR GLAZING



appstein uhen : architects
 MILWAUKEE 333 East Chicago Street
 Milwaukee, Wisconsin 53202
 Telephone 414.271.3592
 MADISON 229 West Johnson Street, Suite 302
 Madison, Wisconsin 53703
 Telephone 608.442.5500

DALGLEISH GILPIN PAXTON ARCHITECTS
 200 Fifth Street, 9th
 Chippewa Falls, Wisconsin 53411
 Telephone 715.837.4900
 Fax 715.837.4900
 www.dalgleishgipin.com

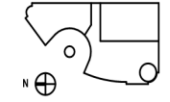
PROJECT INFORMATION

MILWAUKEE OFFICE BUILDING

210 E. Knapp Street
 Milwaukee, WI

ISSUANCE
 DPD MINOR MODIFICATION

KEY PLAN



SHEET INFORMATION

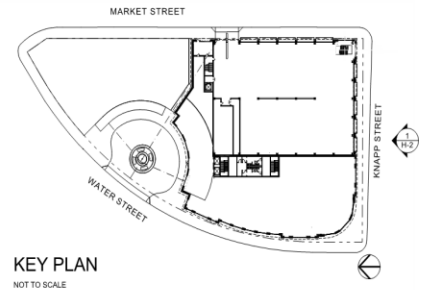
PROJECT MANAGER ER
 PROJECT NUMBER 215522-01
 DATE 06/19/2017

WEST ELEVATION

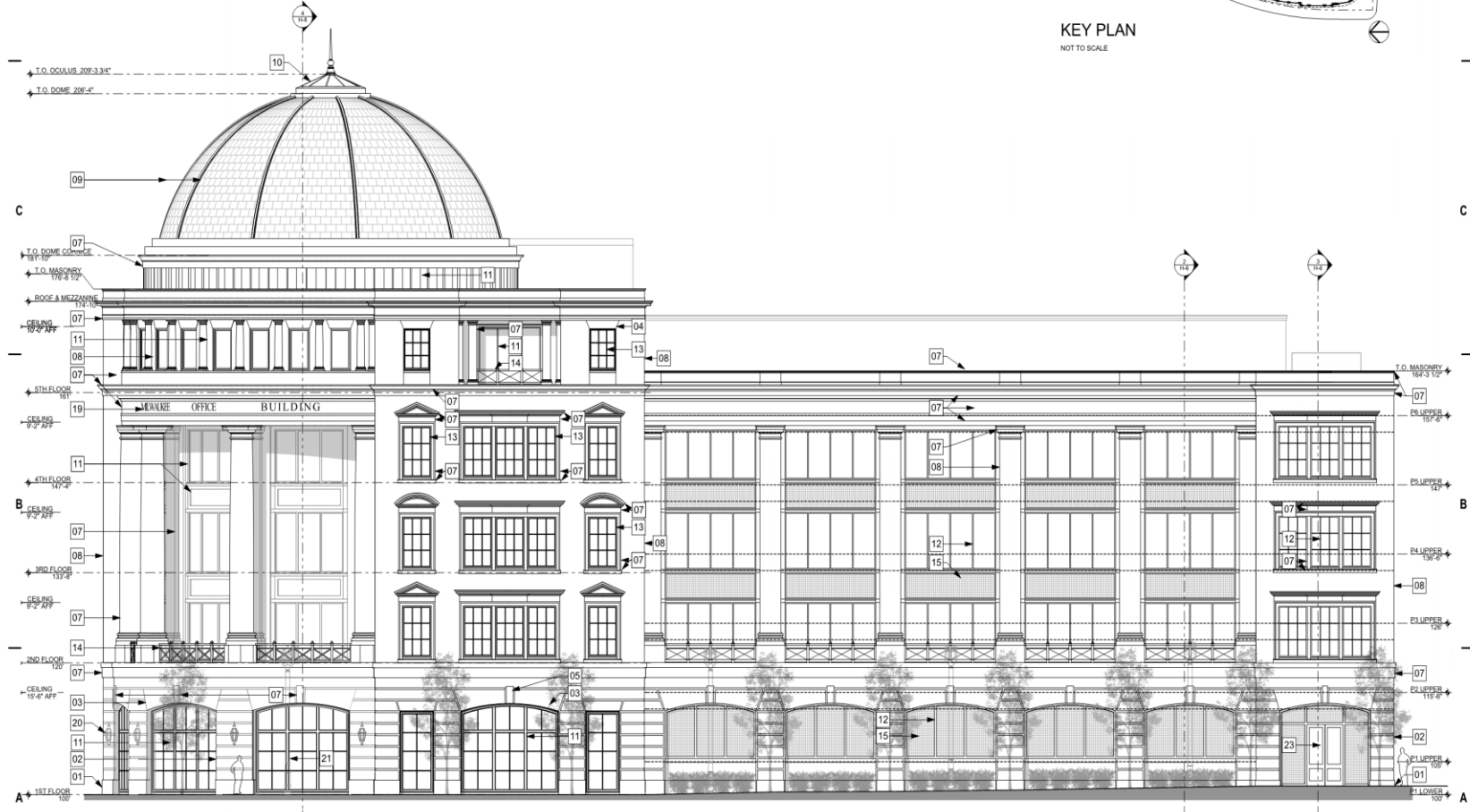


1 WEST ELEVATION - WATER STREET

KEYNOTE MATERIAL INDEX			
01	GRANITE WATERTABLE	12	BRONZE ANODIZED ALUMINUM STOREFRONT FRAMES WITH NO GLAZING
02	RUSTICATED BRICK	13	BRONZE ANODIZED WINDOWS WITH CLEAR GLAZING
03	BRICK SEGMENTAL ARCH	14	PRE-FINISHED METAL RAILING
04	BRICK JACK ARCH	15	PRE-FINISHED METAL SCREENING
05	BRICK KEYSTONE	16	PRE-FINISHED METAL OVERHEAD COILING DOOR
06	ARCHITECTURAL CAST STONE ELLIPTICAL ARCH	17	PRE-FINISHED METAL SCREEN WALL
07	ARCHITECTURAL CAST STONE	18	BRONZE SIGNAGE
08	BRICK	19	CARVED INCISED TEXT
09	ZINC COATED ROOFING	20	ARCHITECTURAL WALL SCOFF
10	ZINC COATED OCUCLUS WITH GLAZING	21	CITY SPECIFIED POLE LIGHTS
11	LEVELS 1 & 5 - BRONZE ANODIZED ALUMINUM STOREFRONT WITH CLEAR GLAZING	22	CLEAR GLAZING
12	LEVELS 2 - 4 - BRONZE ANODIZED ALUMINUM STOREFRONT WITH CLEAR GLAZING & SPANDEL PANELS	23	TEMPERED SAFETY CLEAR GLAZING



KEY PLAN
NOT TO SCALE



1 SOUTH ELEVATION - KNAPP STREET
1" = 10'



eppstein uhen : architects
 milwaukee 333 East Chicago Street
 Milwaukee, Wisconsin 53202
 telephone 414.271.5590
 madison 329 West Johnson Street, Suite 302
 Madison, Wisconsin 53703
 telephone 608.442.5300

DALGISH GILLEN PAXTON ARCHITECTS
 ARCHITECTS • INTERIOR DESIGNERS • 1000 WEST WISCONSIN AVENUE
 200 5TH FLOOR
 CHARLOTTESVILLE VIRGINIA 22902
 T 434.877.6600
 F 434.288.8730
 www.dalgin.com

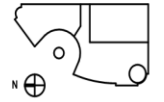
PROJECT INFORMATION

MILWAUKEE OFFICE BUILDING

210 E. Knapp Street
Milwaukee, WI

ISSUANCE
 DPD MINOR MODIFICATION

KEY PLAN

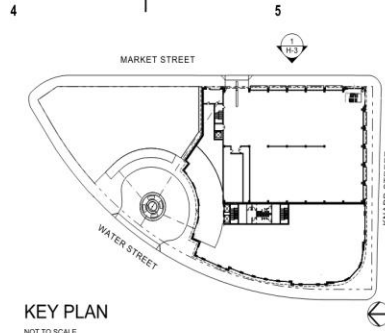


SHEET INFORMATION

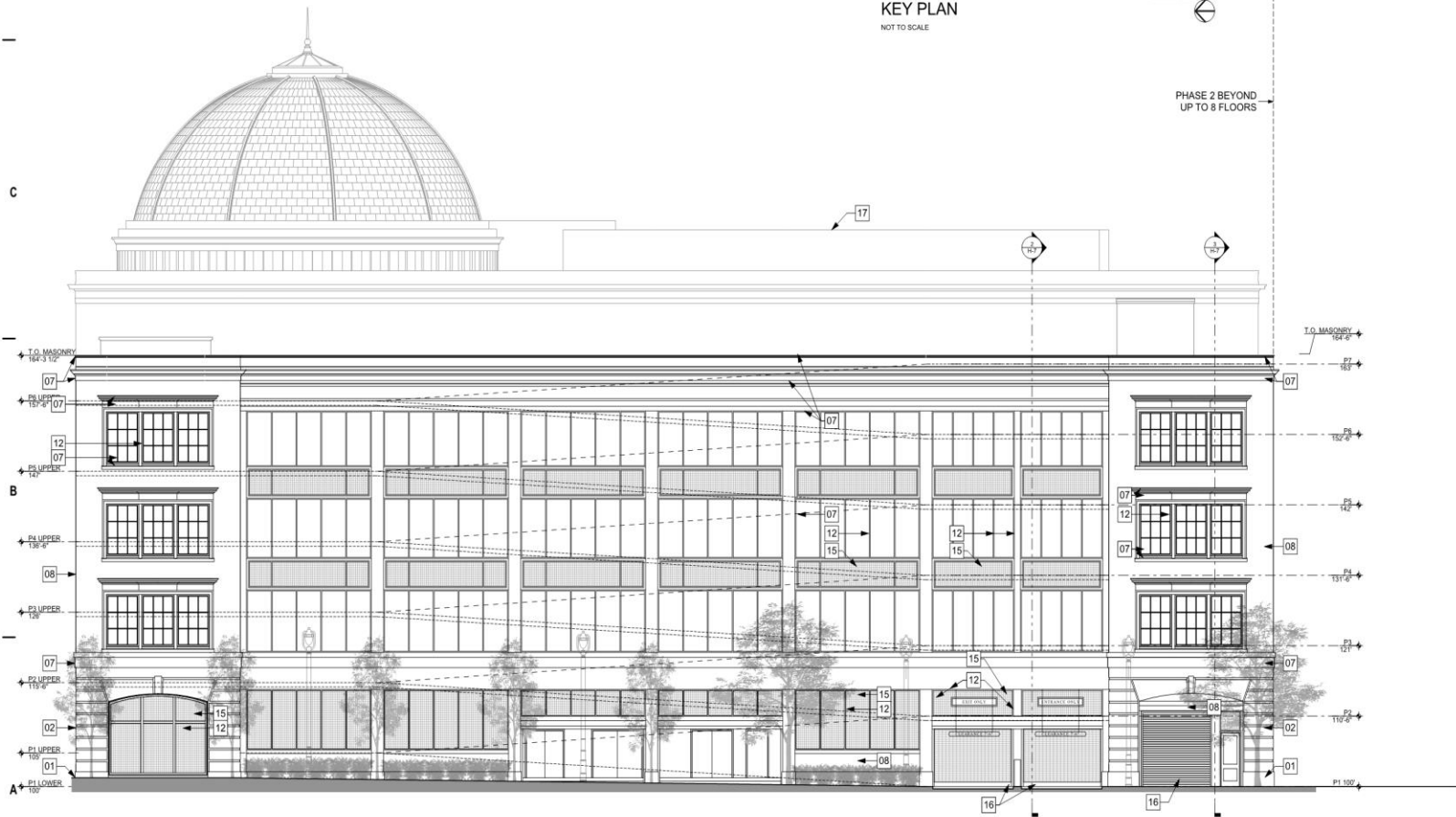
PROJECT MANAGER	ER
PROJECT NUMBER	215522-01
DATE	06/19/2017

SOUTH ELEVATION

KEYNOTE MATERIAL INDEX	
01 GRANITE WATERTABLE	12 BRONZE ANODIZED ALUMINUM STOREFRONT FRAMES WITH NO GLAZING
02 RUSTICATED BRICK	13 BRONZE ANODIZED WINDOWS WITH CLEAR GLAZING
03 BRICK SEGMENTAL ARCH	14 PRE-FINISHED METAL RAILING
04 BRICK JACK ARCH	15 PRE-FINISHED METAL SCREENING
05 BRICK KEYSTONE	16 PRE-FINISHED METAL OVERHEAD COILING DOOR
06 ARCHITECTURAL CAST STONE ELLIPTICAL ARCH	17 PRE-FINISHED METAL SCREEN WALL
07 ARCHITECTURAL CAST STONE	18 BRONZE SIGNAGE
08 BRICK	19 CARVED INCISED TEXT
09 ZINC COATED ROOFING	20 ARCHITECTURAL WALL SCOURCE
10 ZINC COATED OCULUS WITH GLAZING	21 CITY SPECIFIED POLE LIGHTS
11 LEVELS 1 & 5 - BRONZE ANODIZED ALUMINUM STOREFRONT WITH CLEAR GLAZING	22 CLEAR GLAZING
11 LEVELS 2 - 4 - BRONZE ANODIZED ALUMINUM STOREFRONT WITH CLEAR GLAZING & SPANDREL PANELS	23 TEMPERED SAFETY CLEAR GLAZING



KEY PLAN
NOT TO SCALE



1 EAST ELEVATION - MARKET STREET



epstein uhen : architects
 milwaukee 333 East Chicago Street
 Milwaukee, Wisconsin 53202
 telephone 414 271 5500
 madison 218 West Johnson Street, Suite 202
 Madison, Wisconsin 53703
 telephone 608 462 5500

DALGLISH GILPIN PAXTON ARCHITECTS
 208 Fifth Street NE
 Charlottesville Virginia 22902
 P 434 897 4600
 F 434 296 8700
 info@gppa.com

PROJECT INFORMATION

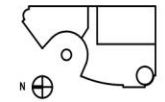
MILWAUKEE OFFICE BUILDING

210 E. Knapp Street
 Milwaukee, WI

ISSUANCE

DPD MINOR MODIFICATION

KEY PLAN



SHEET INFORMATION

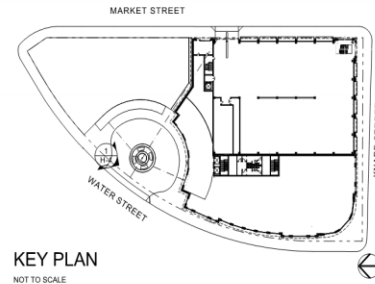
PROJECT MANAGER ER

PROJECT NUMBER 215522-01

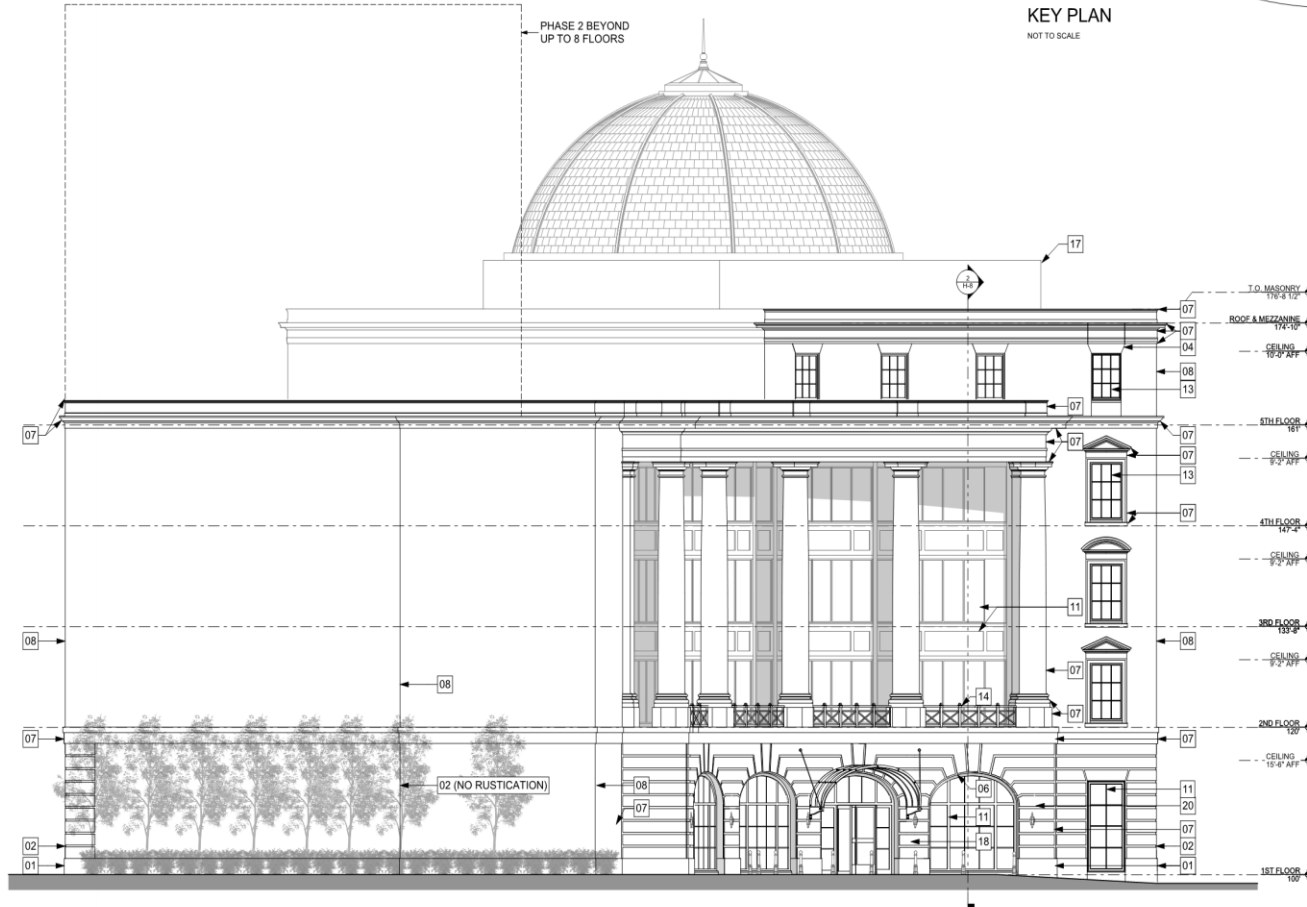
DATE 06/19/2017

EAST ELEVATION

KEYNOTE MATERIAL INDEX			
01	GRANITE WATERTABLE	12	BRONZE ANODIZED ALUMINUM STOREFRONT FRAMES WITH NO GLAZING
02	RUSTICATED BRICK	13	BRONZE ANODIZED WINDOWS WITH CLEAR GLAZING
03	BRICK SEGMENTAL ARCH	14	PRE-FINISHED METAL RAILING
04	BRICK JACK ARCH	15	PRE-FINISHED METAL SCREENING
05	BRICK KEYSTONE	16	PRE-FINISHED METAL OVERHEAD COILING DOOR
06	ARCHITECTURAL CAST STONE ELLIPTICAL ARCH	17	PRE-FINISHED METAL SCREEN WALL
07	ARCHITECTURAL CAST STONE	18	BRONZE SIGNAGE
08	BRICK	19	CARVED INCISED TEXT
D	ZINC COATED ROOFING	20	ARCHITECTURAL WALL SCOFCE
10	ZINC COATED OCULUS WITH GLAZING	21	CITY SPECIFIED POLE LIGHTS
11	LEVELS 1 & 5 - BRONZE ANODIZED ALUMINUM STOREFRONT WITH CLEAR GLAZING	22	CLEAR GLAZING
11	LEVELS 2 - 4 - BRONZE ANODIZED ALUMINUM STOREFRONT WITH CLEAR GLAZING & SPANDEL PANELS	23	TEMPERED SAFETY CLEAR GLAZING



KEY PLAN
NOT TO SCALE



1 NORTH ELEVATION - MOTOR COURT

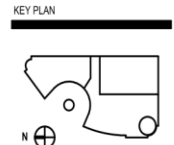


epstein uhen : architects
 milwaukee 333 East Chicago Street
 Milwaukee, Wisconsin 53202
 telephone 414.271.5350
 madison 309 West Adams Street, Suite 202
 Madison, Wisconsin 53703
 telephone 608.442.5350

DALGLEISH GILPIN PAXTON ARCHITECTS
 ARCHITECTURE + HISTORIC PRESERVATION + PLANNING + INTERIOR DESIGN
 206 Fifth Street NE
 Des Moines, Iowa 50319-2292
 515.281.4600
 F 515.281.4720
 www.dgparchitect.com

PROJECT INFORMATION
MILWAUKEE OFFICE BUILDING
 210 E. Knapp Street
 Milwaukee, WI

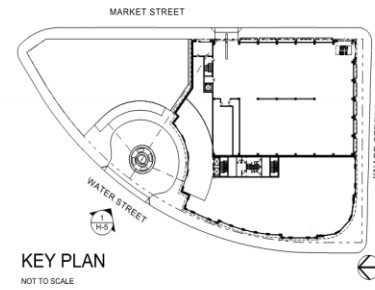
ISSUANCE
 DPD MINOR MODIFICATION



SHEET INFORMATION
 PROJECT MANAGER ER
 PROJECT NUMBER 215522-01
 DATE 06/19/2017

NORTH ELEVATION - MOTOR COURT

KEYNOTE MATERIAL INDEX			
01	GRANITE WATERTABLE	12	BRONZE ANODIZED ALUMINUM STOREFRONT FRAMES WITH NO GLAZING
02	RUSTICATED BRICK	13	BRONZE ANODIZED WINDOWS WITH CLEAR GLAZING
03	BRICK SEGMENTAL ARCH	14	PRE-FINISHED METAL RAILING
04	BRICK JACK ARCH	15	PRE-FINISHED METAL SCREENING
05	BRICK KEYSTONE	16	PRE-FINISHED METAL OVERHEAD COILING DOOR
06	ARCHITECTURAL CAST STONE ELLIPTICAL ARCH	17	PRE-FINISHED METAL SCREEN WALL
07	ARCHITECTURAL CAST STONE	18	BRONZE SIGNAGE
08	BRICK	19	CARVED INCISED TEXT
09	ZINC COATED ROOFING	20	ARCHITECTURAL WALL SCIENCE
10	ZINC COATED OCLULUS WITH GLAZING	21	CITY SPECIFIED POLE LIGHTS
11	LEVELS 1 & 5 - BRONZE ANODIZED ALUMINUM STOREFRONT WITH CLEAR GLAZING	22	CLEAR GLAZING
11	LEVELS 2 - 4 - BRONZE ANODIZED ALUMINUM STOREFRONT WITH CLEAR GLAZING & SPANDREL PANELS	23	TEMPERED SAFETY CLEAR GLAZING



epstein uhen : architects
 milwaukee 333 East Chicago Street
 Milwaukee, Wisconsin 53202
 telephone 414.271.5550
 madison 509 West Atwood Street, Suite 202
 Madison, Wisconsin 53703
 telephone 608.462.5300

DALGLISH GILPIN PAXTON ARCHITECTS
 308 Fifth Street NE
 Charlottesville, Virginia 22902
 P 434.877.4600
 F 434.288.8720
 www.dalGLISHGILPIN.com

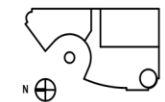
PROJECT INFORMATION

MILWAUKEE OFFICE BUILDING

210 E. Knapp Street
 Milwaukee, WI

ISSUANCE
 DPD MINOR MODIFICATION

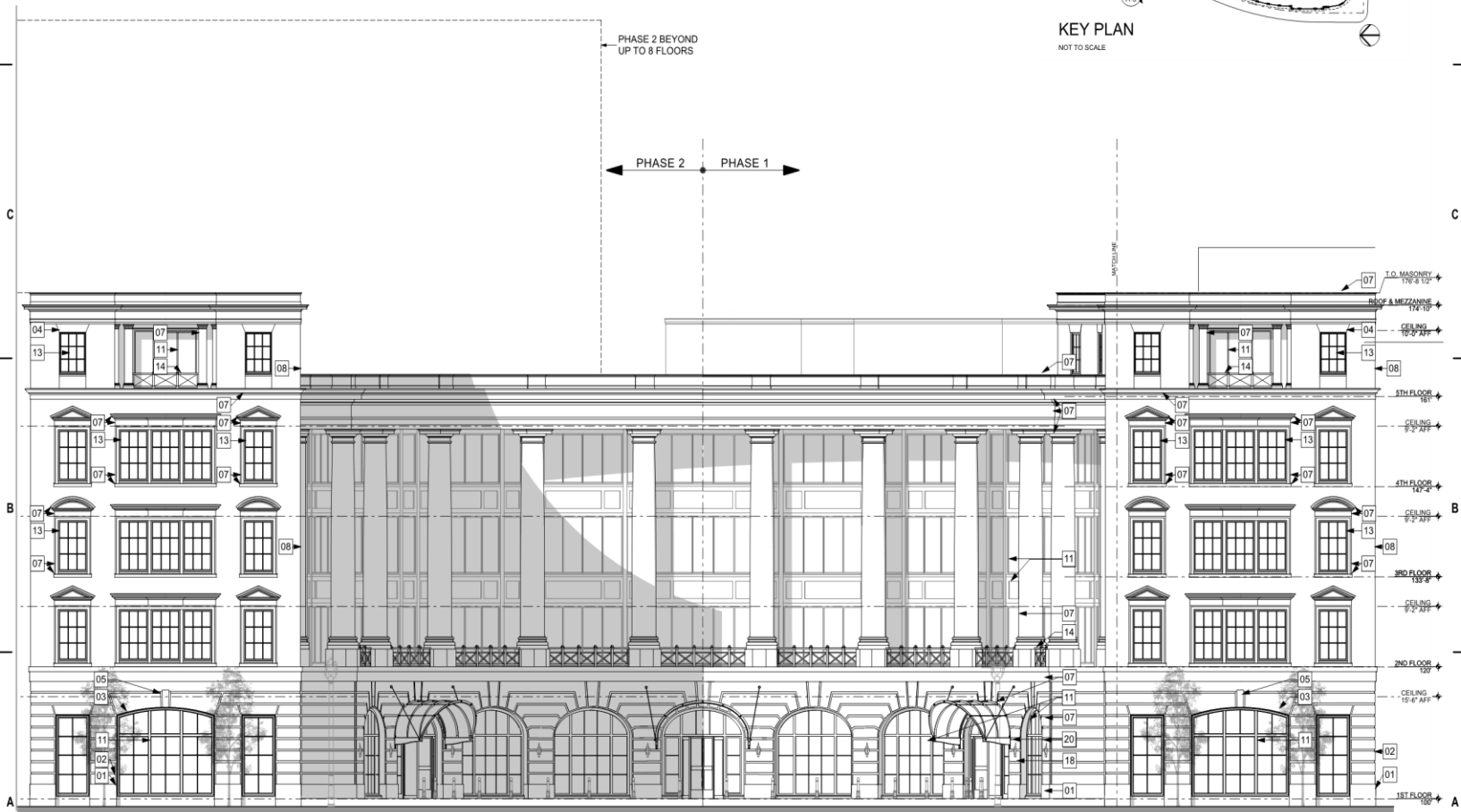
KEY PLAN



SHEET INFORMATION

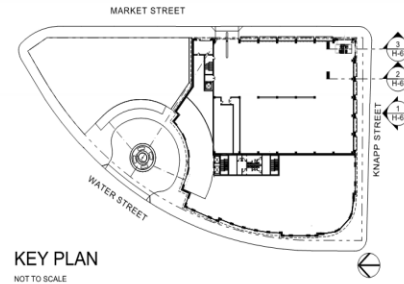
PROJECT MANAGER ER
 PROJECT NUMBER 215522-01
 DATE 06/19/2017

WEST ELEVATION - MOTOR COURT



1 WEST ELEVATION - PHASE 2 MOTOR COURT - WATER STREET

KEYNOTE MATERIAL INDEX	
01 GRANITE WATERTABLE	12 BRONZE ANODIZED ALUMINUM STOREFRONT FRAMES WITH NO GLAZING
02 RUSTICATED BRICK	13 BRONZE ANODIZED WINDOWS WITH CLEAR GLAZING
03 BRICK SEGMENTAL ARCH	14 PRE-FINISHED METAL RAILING
04 BRICK JACK ARCH	15 PRE-FINISHED METAL SCREENING
05 BRICK KEYSTONE	16 PRE-FINISHED METAL OVERHEAD COILING DOOR
06 ARCHITECTURAL CAST STONE ELLIPTICAL ARCH	17 PRE-FINISHED METAL SCREEN WALL
07 ARCHITECTURAL CAST STONE	18 BRONZE SIGNAGE
08 BRICK	19 CARVED INCISED TEXT
09 ZINC COATED ROOFING	20 ARCHITECTURAL WALL SCANCE
10 ZINC COATED OCVLUS WITH GLAZING	21 CITY SPECIFIED POLE LIGHTS
11 LEVELS 1 & 6 - BRONZE ANODIZED ALUMINUM STOREFRONT WITH CLEAR GLAZING	22 CLEAR GLAZING
11 LEVELS 2 - 4 - BRONZE ANODIZED ALUMINUM STOREFRONT WITH CLEAR GLAZING & SPANDREL PANELS	23 TEMPERED SAFETY CLEAR GLAZING



KEY PLAN
NOT TO SCALE



epstein uhen : architects
 milwaukee 333 East Chicago Street
 Milwaukee, Wisconsin 53202
 telephone 414.271.5350
 madison 508 West Johnson Street, Suite 302
 Madison, Wisconsin 53703
 telephone 608.442.1500

DALGLEISH GILPIN PAXTON ARCHITECTS
 ARCHITECTURE INTERIOR DESIGN/PLANNING
 204 Park Street West
 Charlottesville Virginia 22902
 T 434.577.4650
 F 434.296.8720
 info@gilpinpaxton.com

PROJECT INFORMATION

MILWAUKEE OFFICE BUILDING

210 E. Knapp Street
 Milwaukee, WI

ISSUANCE

DPD MINOR MODIFICATION

KEY PLAN



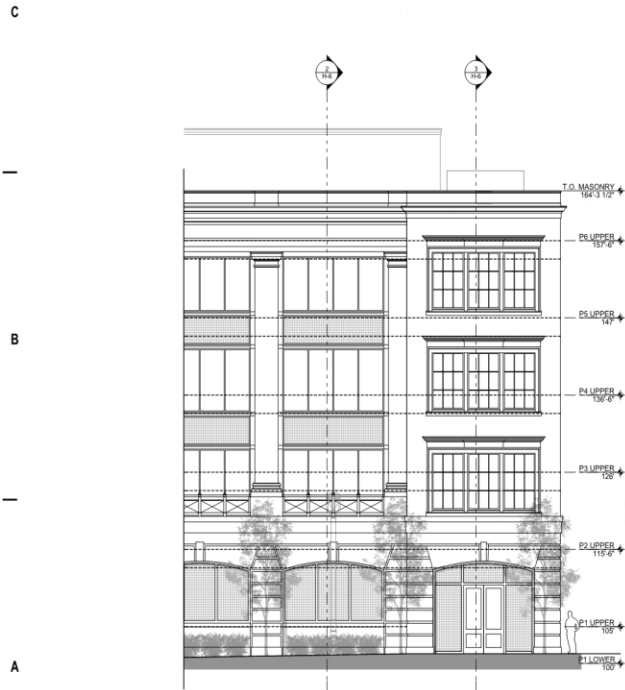
SHEET INFORMATION

PROJECT MANAGER ER

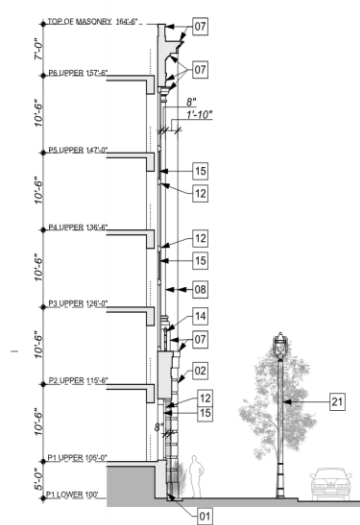
PROJECT NUMBER 215522-01

DATE 06/19/2017

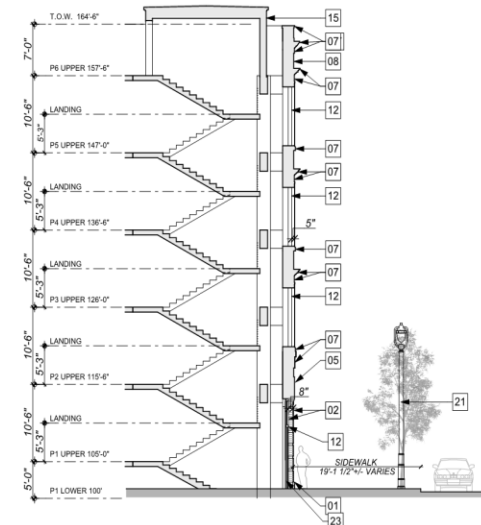
SOUTH SECTIONS



1 SOUTH ELEVATION DETAIL - KNAPP STREET

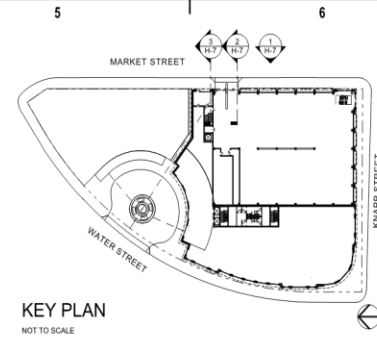


2 BUILDING SECTION - KNAPP STREET



3 BUILDING SECTION - KNAPP STREET

KEYNOTE MATERIAL INDEX			
01	GRANITE WATERTABLE	12	BRONZE ANODIZED ALUMINUM STOREFRONT FRAMES WITH NO GLAZING
02	RUSTICATED BRICK	13	BRONZE ANODIZED WINDOWS WITH CLEAR GLAZING
03	BRICK SEGMENTAL ARCH	14	PRE-FINISHED METAL RAILING
04	BRICK JACK ARCH	15	PRE-FINISHED METAL SCREENING
05	BRICK KEystone	16	PRE-FINISHED METAL OVERHEAD COILING DOOR
06	ARCHITECTURAL CAST STONE ELLIPTICAL ARCH	17	PRE-FINISHED METAL SCREEN WALL
07	ARCHITECTURAL CAST STONE	18	BRONZE SIGNAGE
08	BRICK	19	CARVED INCISED TEXT
09	ZINC COATED ROOFING	20	ARCHITECTURAL WALL SCENCE
D	ZINC COATED OCULUS WITH GLAZING	21	CITY SPECIFIED POLE LIGHTS
10	LEVELS 1 & 5 - BRONZE ANODIZED ALUMINUM STOREFRONT WITH CLEAR GLAZING	22	CLEAR GLAZING
11	LEVELS 2 - 4 - BRONZE ANODIZED ALUMINUM STOREFRONT WITH CLEAR GLAZING & SPANDREL PANELS	23	TEMPERED SAFETY CLEAR GLAZING



eua

epstein uhen : architects

milwaukee 333 East Chicago Street
Milwaukee, Wisconsin 53202
telephone 414.271.5090

D madison 339 West Johnson Street, Suite 302
Madison, Wisconsin 53703
telephone 608.442.5090

DALGLISH GILPIN PAXTON ARCHITECTS

204 Park Street NE
Charlottesville Virginia 22902
1-804-987-4400
F 434.298.8700
info@gppaarchitect.com

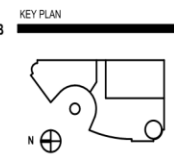
PROJECT INFORMATION

MILWAUKEE OFFICE BUILDING

210 E. Knapp Street
Milwaukee, WI

ISSUANCE

DPD MINOR MODIFICATION



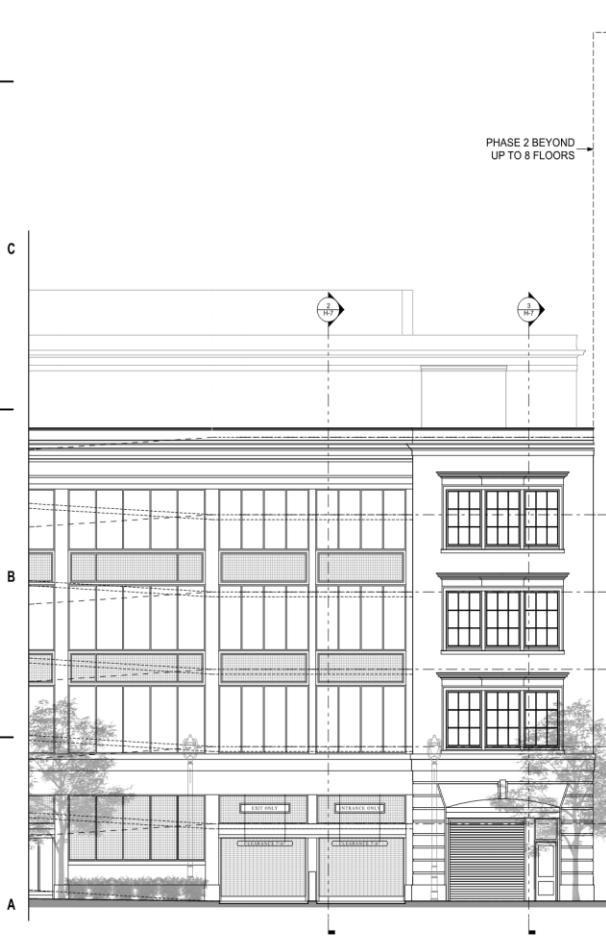
SHEET INFORMATION

PROJECT MANAGER ER

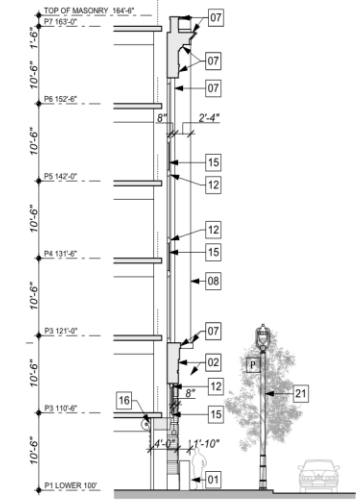
PROJECT NUMBER 215522-01

DATE 06/19/2017

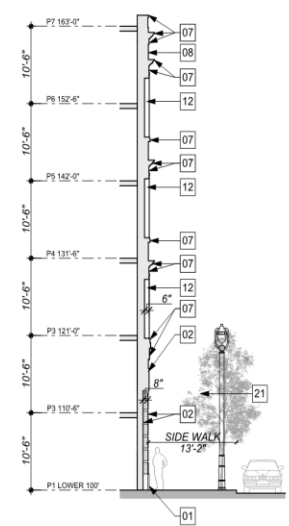
EAST SECTIONS



1 EAST ELEVATION DETAIL - MARKET STREET

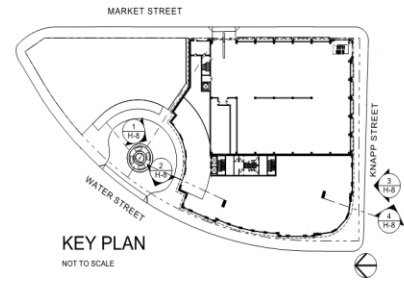


2 BUILDING SECTION - MARKET STREET

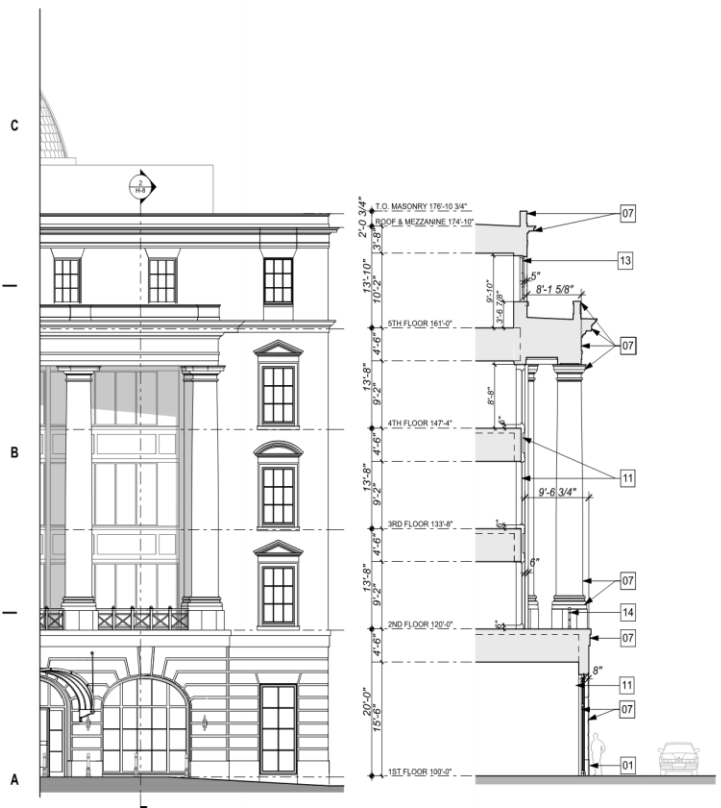


3 BUILDING SECTION - MARKET STREET

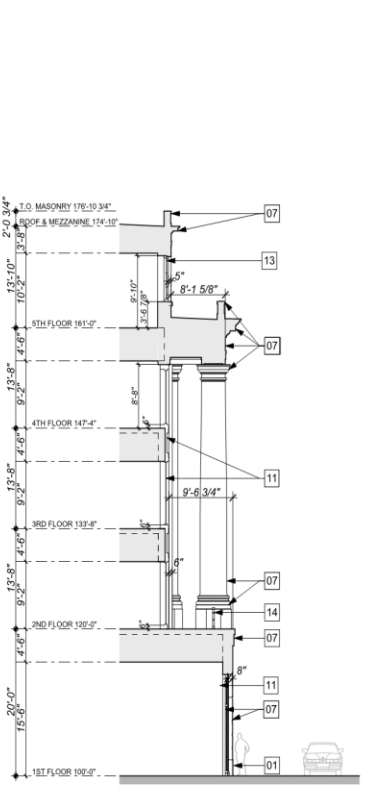
KEYNOTE MATERIAL INDEX	
01 GRANITE WATERTABLE	12 BRONZE ANODIZED ALUMINUM STOREFRONT FRAMES WITH NO GLAZING
02 RUSTICATED BRICK	13 BRONZE ANODIZED WINDOWS WITH CLEAR GLAZING
03 BRICK SEGMENTAL ARCH	14 PRE-FINISHED METAL RAILING
04 BRICK JACK ARCH	15 PRE-FINISHED METAL SCREENING
05 BRICK KEYSTONE	16 PRE-FINISHED METAL OVERHEAD COILING DOOR
06 ARCHITECTURAL CAST STONE ELLIPTICAL ARCH	17 PRE-FINISHED METAL SCREEN WALL
07 ARCHITECTURAL CAST STONE	18 BRONZE SIGNAGE
08 BRICK	19 CARVED INCISED TEXT
09 ZINC COATED ROOFING	20 ARCHITECTURAL WALL SCONCE
10 ZINC COATED OCUCLUS WITH GLAZING	21 CITY SPECIFIED POLE LIGHTS
11 LEVELS 1 & 5 - BRONZE ANODIZED ALUMINUM STOREFRONT WITH CLEAR GLAZING	22 CLEAR GLAZING
12 LEVELS 2 - 4 - BRONZE ANODIZED ALUMINUM STOREFRONT WITH CLEAR GLAZING & SPANDREL PANELS	23 TEMPERED SAFETY CLEAR GLAZING



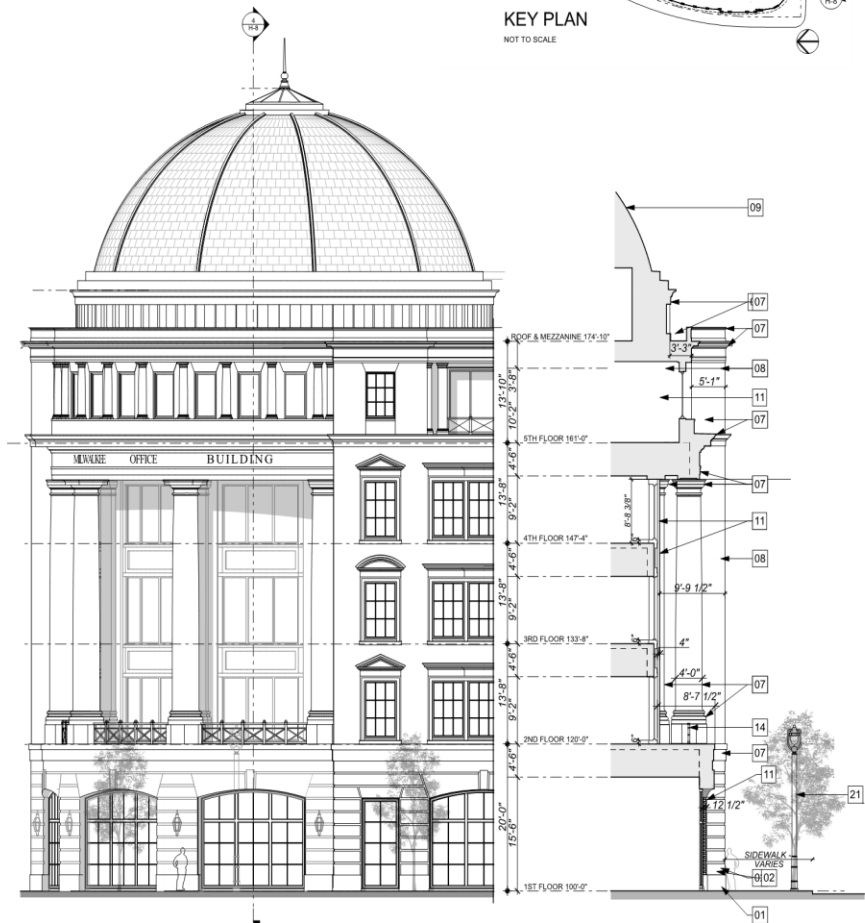
KEY PLAN
NOT TO SCALE



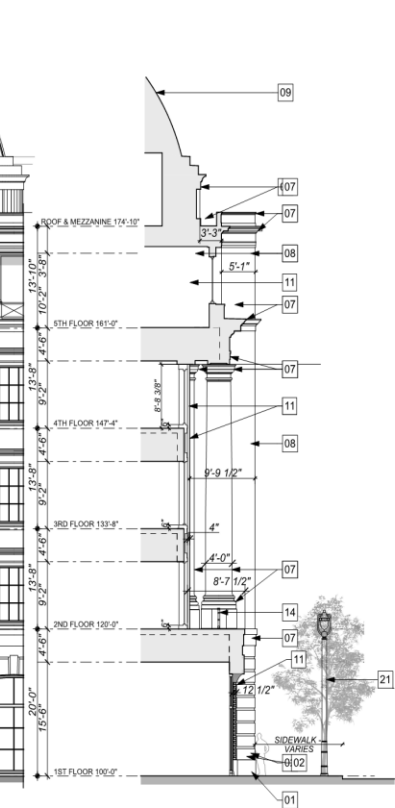
1 MOTOR COURT ELEVATION DETAIL - WATER STREET



2 BUILDING SECTION - MOTOR COURT



3 SOUTHWEST ELEVATION DETAIL - WATER & KNAPP STREET



4 SOUTHWEST BUILDING SECTION



epstein uhen : architects
 milwaukee 333 East Chicago Street
 Milwaukee, Wisconsin 53202
 telephone 414.271.5300
 madison 330 West Johnson Street, Suite 202
 Madison, Wisconsin 53753
 telephone 608.442.5300

DALGLISH GILPIN PAXTON ARCHITECTS
 ARCHITECTS • INTERIOR DESIGNERS • HISTORIC PRESERVATION
 224 Fifth Street NE
 Champlinville Virginia 22802
 434.677.4400
 F 434.296.8702
 info@dgparchitects.com

PROJECT INFORMATION

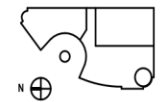
MILWAUKEE OFFICE BUILDING

210 E. Knapp Street
 Milwaukee, WI

ISSUANCE

DPD MINOR MODIFICATION

KEY PLAN

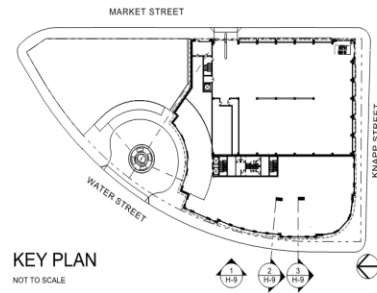


SHEET INFORMATION

PROJECT MANAGER ER
 PROJECT NUMBER 215522-01
 DATE 06/19/2017

MOTOR COURT & SOUTHWEST SECTIONS

KEYNOTE MATERIAL INDEX			
01	GRANITE WATERTABLE	12	BRONZE ANODIZED ALUMINUM STOREFRONT FRAMES WITH NO GLAZING
02	RUSTICATED ROOFING	13	BRONZE ANODIZED WINDOWS WITH CLEAR GLAZING
03	BRICK SEGMENTAL ARCH	14	PRE-FINISHED METAL RAILING
04	BRICK JACK ARCH	15	PRE-FINISHED METAL SCREENING
05	BRICK KEYSTONE	16	PRE-FINISHED METAL OVERHEAD COILING DOOR
06	ARCHITECTURAL CAST STONE ELLIPTICAL ARCH	17	PRE-FINISHED METAL SCREEN WALL
07	ARCHITECTURAL CAST STONE	18	BRONZE SIGNAGE
08	BRICK	19	CARVED INCISED TEXT
09	ZINC COATED ROOFING	20	ARCHITECTURAL WALL SCENCE
10	ZINC COATED OCULUS WITH GLAZING	21	CITY SPECIFIED POLE LIGHTS
11	LEVELS 1 & 5 - BRONZE ANODIZED ALUMINUM STOREFRONT WITH CLEAR GLAZING	22	CLEAR GLAZING
11	LEVELS 2 - 4 - BRONZE ANODIZED ALUMINUM STOREFRONT WITH CLEAR GLAZING & SPANDREL PANELS	23	TEMPERED SAFETY CLEAR GLAZING



KEY PLAN
NOT TO SCALE



epstein uhen : architects
 milwaukee 333 East Chicago Street
 Milwaukee, Wisconsin 53202
 telephone 414.271.5500
 madison 309 West Johnson Street, Suite 202
 Madison, Wisconsin 53753
 telephone 608.442.5500

DALGLISH GILPIN PAXTON ARCHITECTS
 204 E. Ohio Street, 10th
 Charlotteville, Virginia 22902
 434.577.4400
 F. 434.296.8700
 info@gppa.com

PROJECT INFORMATION

MILWAUKEE OFFICE BUILDING

210 E. Knapp Street
 Milwaukee, WI

ISSUANCE

DPD MINOR MODIFICATION

KEY PLAN



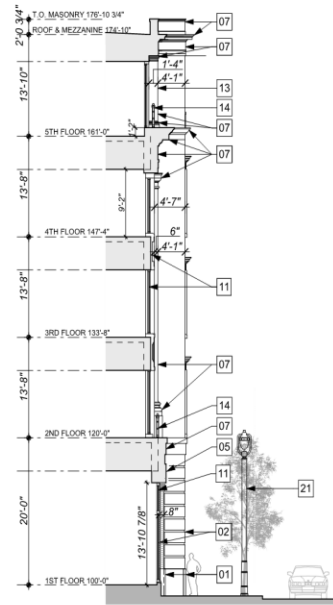
SHEET INFORMATION

PROJECT MANAGER ER
 PROJECT NUMBER 215522-01
 DATE 06/19/2017

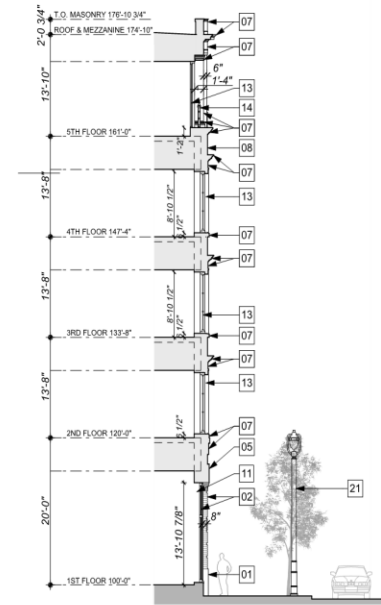
WEST SECTIONS



1 WEST ELEVATION DETAIL - WATER STREET

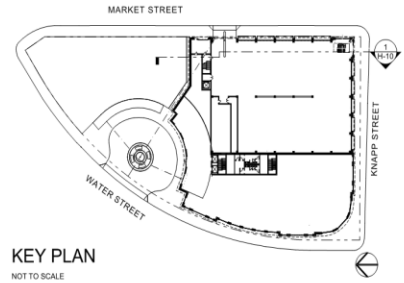


2 BUILDING SECTION

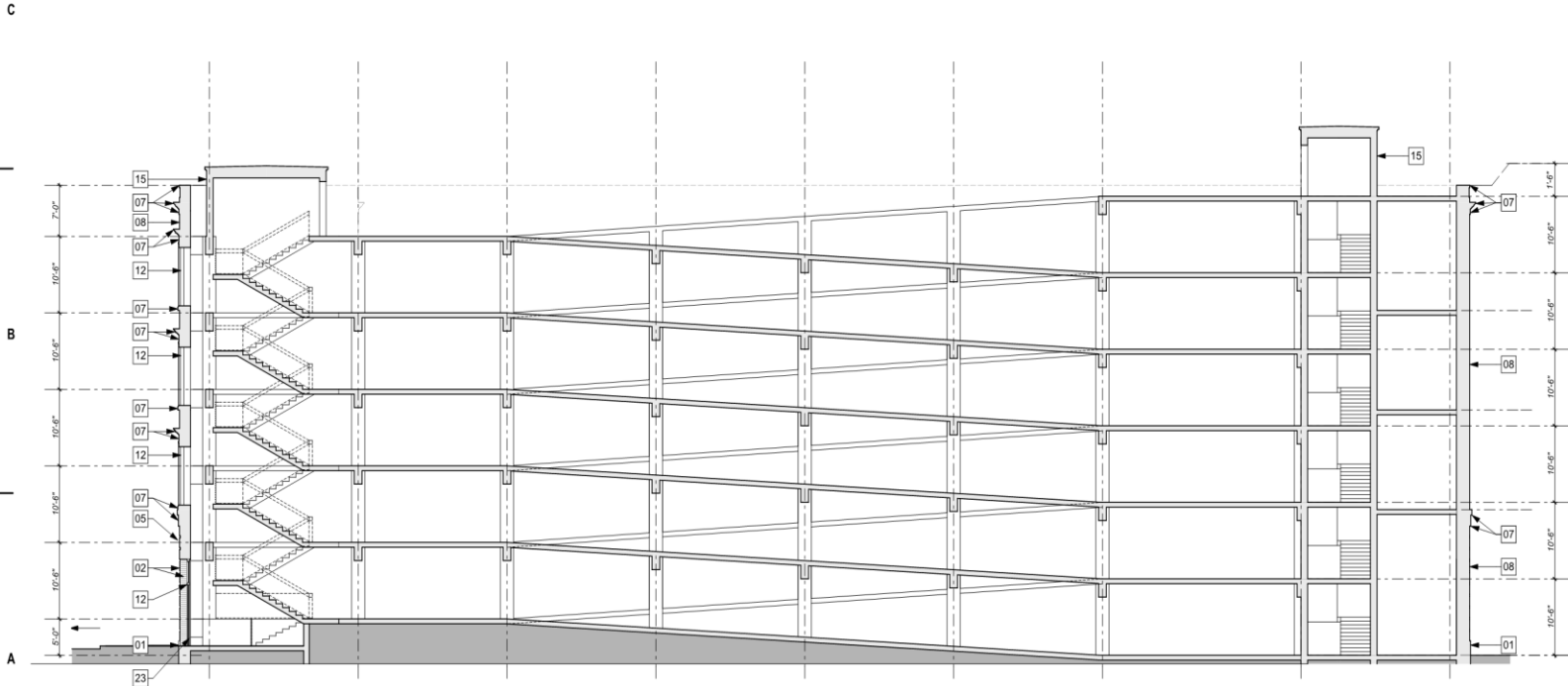


3 BUILDING SECTION

KEYNOTE MATERIAL INDEX	
01 GRANITE WATERTABLE	12 BRONZE ANODIZED ALUMINUM STOREFRONT FRAMES WITH NO GLAZING
02 RUSTICATED BRICK	13 BRONZE ANODIZED WINDOWS WITH CLEAR GLAZING
03 BRICK SEGMENTAL ARCH	14 PRE-FINISHED METAL RAILING
04 BRICK JACK ARCH	15 PRE-FINISHED METAL SCREENING
05 BRICK KEYSTONE	16 PRE-FINISHED METAL OVERHEAD COILING DOOR
06 ARCHITECTURAL CAST STONE ELLIPTICAL ARCH	17 PRE-FINISHED METAL SCREEN WALL
07 ARCHITECTURAL CAST STONE	18 BRONZE SIGNAGE
08 BRICK	19 CARVED INCISED TEXT
09 ZINC COATED ROOFING	20 ARCHITECTURAL WALL SCOFF
10 ZINC COATED OCULUS WITH GLAZING	21 CITY SPECIFIED POLE LIGHTS
LEVELS 1 & 5 - BRONZE ANODIZED ALUMINUM STOREFRONT WITH CLEAR GLAZING	22 CLEAR GLAZING
LEVELS 2 - 4 - BRONZE ANODIZED ALUMINUM STOREFRONT WITH CLEAR GLAZING & SPANDEL PANELS	23 TEMPERED SAFETY CLEAR GLAZING



KEY PLAN
NOT TO SCALE



1 N-S GARAGE SECTION
0 5 10



epstein uhen : architects
 milwaukee 333 East Chicago Street
 Milwaukee, Wisconsin 53202
 telephone 414.271.5190
 madison 319 West Monroe Street, Suite 202
 Madison, Wisconsin 53703
 telephone 608.462.5190

DALGLISH GILPIN PAXTON ARCHITECTS
 326 Park Street NE
 Charlottesville, Virginia 22902
 P 434.977.4400
 F 434.298.8700
 info@gilpinpaxton.com

PROJECT INFORMATION

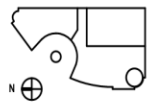
MILWAUKEE OFFICE BUILDING

210 E. Knapp Street
Milwaukee, WI

ISSUANCE

DPD MINOR MODIFICATION

KEY PLAN



SHEET INFORMATION

PROJECT MANAGER	ER
PROJECT NUMBER	215522-01
DATE	06/19/2017

N-S GARAGE BUILDING SECTION



epstein uhen : architects

milwaukee 333 East Chicago Street
Milwaukee, Wisconsin 53202
telephone 414.271.5000
madison 336 West Jones Street, Suite 202
Madison, Wisconsin 53703
telephone 608.442.5000

DALGLISH GILPIN PAXTON ARCHITECTS

225 West Grand Ave
Charlestown Heights 22902
703.997.8800
F 434.296.8700
info@dalGLISH.com

PROJECT INFORMATION

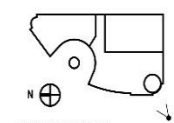
MILWAUKEE OFFICE BUILDING

210 E. Knapp Street
Milwaukee, WI

ISSUANCE

DPD MINOR MODIFICATION

KEY PLAN



SHEET INFORMATION

PROJECT MANAGER ER
PROJECT NUMBER 215522-01
DATE 06/19/2017

SOUTHWEST VIEW





epstein uhen : architects

milwaukee 333 East Chicago Street
Milwaukee, Wisconsin 53202
telephone 414.271.5000
madison 305 West Jones Street, Suite 202
Madison, Wisconsin 53703
telephone 608.442.5000

DALGLEISH GILPIN PAXTON ARCHITECTS
ARCHITECTS - INTERIORS - RESTAURANTS - LANDSCAPE ARCHITECTS
225 West Grand Ave.
Charlestown Heights, 22902
781.337.8400
F 978.246.8700
info@dalgleish.com

PROJECT INFORMATION

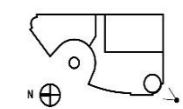
MILWAUKEE OFFICE BUILDING

210 E. Knapp Street
Milwaukee, WI

ISSUANCE

DPD MINOR MODIFICATION

KEY PLAN



SHEET INFORMATION

PROJECT MANAGER ER
PROJECT NUMBER 215522-01
DATE 06/19/2017

SOUTH VIEW





epstein uhen : architects

milwaukee 333 East Chicago Street
Milwaukee, Wisconsin 53202
telephone 414.271.5000
madison 305 West Jones Street, Suite 202
Madison, Wisconsin 53703
telephone 608.442.5000

DALGLEISH GILPIN PAXTON ARCHITECTS
ARCHITECTS - INTERIORS - RESTAURANTS - LANDSCAPE ARCHITECTS
224 West Grand Ave.
Charlestown Heights, 22802
T 617.557.8800
F 617.246.8700
info@dalgleish.com

PROJECT INFORMATION

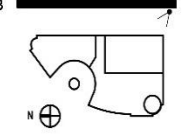
MILWAUKEE OFFICE BUILDING

210 E. Knapp Street
Milwaukee, WI

ISSUANCE

DPD MINOR MODIFICATION

KEY PLAN



SHEET INFORMATION

PROJECT MANAGER ER
PROJECT NUMBER 215522-01
DATE 06/19/2017

SOUTHEAST VIEW





eppstein uhen : architects

milwaukee 333 East Chicago Street
Milwaukee, Wisconsin 53202
telephone 414.271.5000
madison 305 West Avenue Street, Suite 202
Madison, Wisconsin 53703
telephone 608.442.5000

DALGLISH GILPIN PAXTON ARCHITECTS
ARCHITECTS - INTERIORS - RESTAURANTS - LANDSCAPE ARCHITECTS
224 West Chicago
Chicago, Illinois 60604
T 312.587.8800
F 312.246.8700
info@dgppart.com

PROJECT INFORMATION

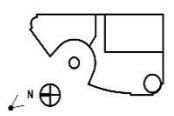
MILWAUKEE OFFICE BUILDING

210 E. Knapp Street
Milwaukee, WI

ISSUANCE

DPD MINOR MODIFICATION

KEY PLAN



SHEET INFORMATION

PROJECT MANAGER ER
PROJECT NUMBER 215522-01
DATE 06/19/2017

**MOTOR COURT
PHASE I VIEW**





eppstein uhen : architects

milwaukee 333 East Chicago Street
Milwaukee, Wisconsin 53202
telephone 414.271.5000
madison 336 West Avenue Street, Suite 200
Madison, Wisconsin 53703
telephone 608.442.5000

DALGLEISH GILPIN PAXTON ARCHITECTS
ARCHITECTS - INTERIORS - RESTAURANTS - LANDSCAPE ARCHITECTS
224 West Chestnut
Charlestown Heights, Illinois 60620
T 630.977.8800
F 630.296.8700
info@dalgleish.com

PROJECT INFORMATION

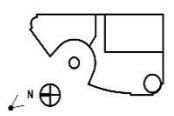
MILWAUKEE OFFICE BUILDING

210 E. Knapp Street
Milwaukee, WI

ISSUANCE

DPD MINOR MODIFICATION

KEY PLAN



SHEET INFORMATION

PROJECT MANAGER ER
PROJECT NUMBER 215522-01
DATE 06/19/2017

**MOTOR COURT
PHASE II VIEW**

A



PROJECT INFORMATION

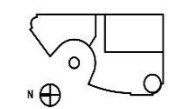
MILWAUKEE OFFICE BUILDING

210 E. Knapp Street
 Milwaukee, WI

ISSUANCE

DPD MINOR MODIFICATION

KEY PLAN



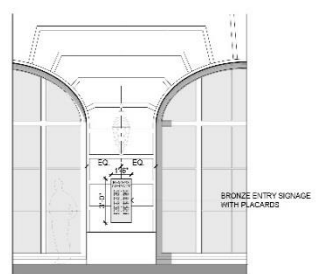
SHEET INFORMATION

PROJECT MANAGER ER
 PROJECT NUMBER 215522-01
 DATE 06/19/2017

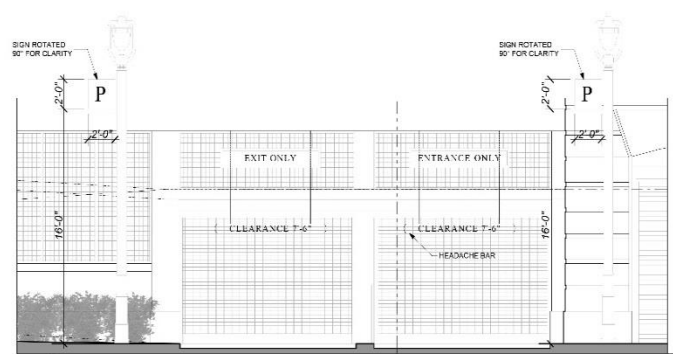
SIGNAGE ELEVATIONS



1 ELEVATION SIGNAGE
 NOT TO SCALE

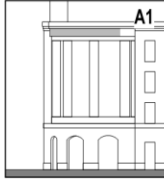


2 TYPICAL BUILDING ENTRY PLACARD
 NOT TO SCALE



3 GARAGE SIGNAGE
 NOT TO SCALE

BUILDING IDENTIFICATION



BUILDING IDENTITY - BUILDING FACADE

PURPOSE:
PROJECT IDENTIFICATION ON ENTAILMENT OF OFFICE BUILDING ROTUNDA/MOTOR COURT

GUIDELINES:
FORM DIMENSIONAL LETTERS

APPROX. SIZE:
30"0" x 2.0" H

POWER / DATA REQUIREMENTS:
NONE

ILLUMINATION REQUIREMENTS:
NONE

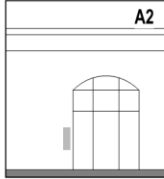
MATERIAL FABRICATION & FINISH:
FABRICATED, PAINTED METAL SIGN LETTERS
ALTERNATE: PRECAST CONCRETE RELIEF

INSTALLATION & FOUNDATION / SUPPORT:
SIGN MOUNTED TO BUILDING FACADE, ANCHORED INTO BUILDING SUB-STRUCTURE AS NECESSARY.
ALTERNATE: CAST INTO ENTAILMENTURE

QTY: SEE SHEET J-1 AND BUILDING ELEVATIONS

SEE ALSO: DETAIL 1/1-1

SIGNAGE LEGEND
1/4" = 1'-0"



TENANT OR BUILDING IDENTIFICATION - BUILDING FACADE GLAZING

PURPOSE:
IDENTIFICATION AT BUILDING ENTRY / TENANT IDENTIFICATION

GUIDELINES:
FORM: BRONZE PLACARD

APPROX. SIZE:
14.5" x 3'-4" H

POWER / DATA REQUIREMENTS:
NONE
ALTERNATE: POWER

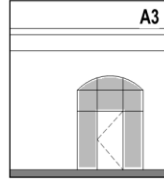
ILLUMINATION REQUIREMENTS:
NONE
ALTERNATE: INTERNAL FACE LIT OR HALO LIT

MATERIAL FABRICATION & FINISH:
BRONZE

INSTALLATION & FOUNDATION / SUPPORT:
SIGN INTEGRAL TO BUILDING GLAZING
ALTERNATE: MOUNTED TO BUILDING FACADE OR BUILDING SUB-STRUCTURE AS NECESSARY.

QTY: 1

SEE ALSO: DETAIL 2/1-1



TENANT OR BUILDING OR COMMUNITY IDENTITY - BUILDING STOREFRONT / CURTAIN WALL GLAZING

PURPOSE:
IDENTIFICATION ON GLAZING OF OFFICE BUILDING

GUIDELINES:
FORM: APPLIED GLAZING FILM OR GLASS FRIT OR ETCHED GLASS PATTERN

APPROX. SIZE:
VARIES, X 8'-0" - 10'-0" H

POWER / DATA REQUIREMENTS:
NONE

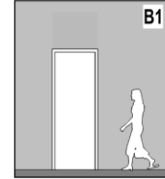
ILLUMINATION REQUIREMENTS:
NONE

MATERIAL FABRICATION & FINISH:
GLASS FILM / FRIT COLOR Tint

INSTALLATION & FOUNDATION / SUPPORT:
SIGN INTEGRAL TO BUILDING GLAZING

QTY: 4

ENTRANCE IDENTIFICATION



ENTRANCE IDENTITY - SERVICE / EGRESS DOOR

PURPOSE:
SERVICE DOOR / EGRESS ONLY DOOR IDENTIFICATION

GUIDELINES:
FORM: DIMENSIONAL LETTERS / LOGO

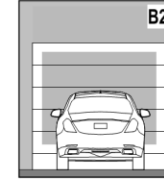
APPROX. SIZE:
2'-4" x 8'-4" W

POWER / DATA REQUIREMENTS:
ELECTRICAL
ILLUMINATION REQUIREMENTS:
INTERNAL FACE LIT OR HALO LIT

MATERIAL FABRICATION & FINISH:
FABRICATED, METAL SIGN LETTERS / LOGO
ALTERNATE: CABINET W/ TRANSLUCENT FACE SUBSTRATE

INSTALLATION & FOUNDATION / SUPPORT:
SIGN MOUNTED TO BUILDING FACADE, ANCHORED INTO MULLION OR BUILDING SUB-STRUCTURE AS NECESSARY.

QTY: 1



PARKING ENTRY OVERHEAD AND/OR ON ENTRY DOOR

PURPOSE:
PARKING ENTRY IDENTIFICATION

GUIDELINES:
FORM: DIMENSIONAL LETTERS / LOGO OR PAINTED LETTERS / LOGO

APPROX. SIZE:
2'-4" x 10'-0" W (OVER DOOR)
8'-4" x 8'-4" W (ON DOOR)

POWER / DATA REQUIREMENTS:
ELECTRICAL (OVER DOOR)
N/A (ON DOOR)

ILLUMINATION REQUIREMENTS:
INTERNAL FACE LIT OR HALO LIT (OVER DOOR)
N/A (ON DOOR)

MATERIAL FABRICATION & FINISH:
FABRICATED, METAL SIGN LETTERS / LOGO
ALTERNATE: CABINET W/ TRANSLUCENT FACE SUBSTRATE
DOOR GRAPHIC: APPLIED OR PAINTED

INSTALLATION & FOUNDATION / SUPPORT:
SIGN MOUNTED TO BUILDING FACADE, ANCHORED INTO MULLION OR BUILDING SUB-STRUCTURE AS NECESSARY OR APPLIED TO DOOR



LOADING IDENTITY OVERHEAD AND/OR ON DOOR DOOR

PURPOSE:
LOADING DOOR IDENTIFICATION

GUIDELINES:
FORM: DIMENSIONAL LETTERS / LOGO OR PAINTED LETTERS / LOGO

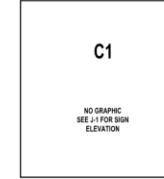
APPROX. SIZE:
2'-4" x 10'-0" W (OVER DOOR)
8'-4" x 8'-4" W (ON DOOR)

POWER / DATA REQUIREMENTS:
ELECTRICAL (OVER DOOR)
N/A (ON DOOR)

ILLUMINATION REQUIREMENTS:
INTERNAL FACE LIT OR HALO LIT (OVER DOOR)
N/A (ON DOOR)

MATERIAL FABRICATION & FINISH:
FABRICATED, METAL SIGN LETTERS / LOGO
ALTERNATE: CABINET W/ TRANSLUCENT FACE SUBSTRATE
DOOR GRAPHIC: APPLIED OR PAINTED

INSTALLATION & FOUNDATION / SUPPORT:
SIGN MOUNTED TO BUILDING FACADE, ANCHORED INTO MULLION OR BUILDING SUB-STRUCTURE AS NECESSARY OR APPLIED TO DOOR



PARKING - FLAG SIGN

PURPOSE:
PARKING GARAGE LOCATION

GUIDELINES:
FORM: PANEL SIGN ON POLE

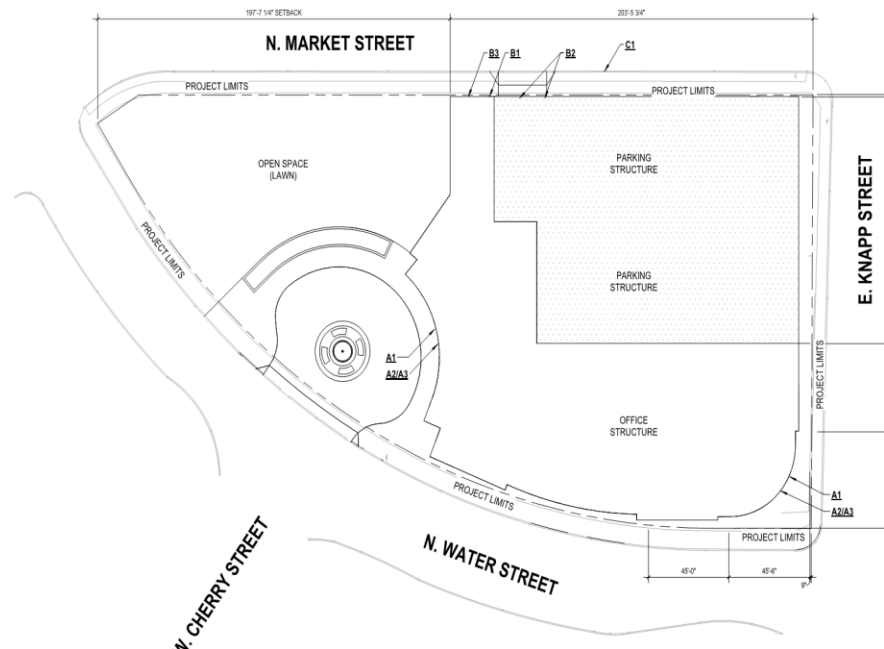
APPROX. SIZE:
2'-0" x 2'-0" (SIGN)
10'-0" (POLE)

POWER / DATA REQUIREMENTS:
NONE

ILLUMINATION REQUIREMENTS:
NONE

MATERIAL FABRICATION & FINISH:
PANEL SIGN, PAINTED REFLECTIVE METAL POLE. TO MATCH SIDEWALK POLE LIGHTS

INSTALLATION & FOUNDATION / SUPPORT:
SIDEWALK-MOUNTED BASE PLATE



A1 SIGNAGE PLAN
1" = 30'-0"



eppstein uhen : architects
milwaukee 333 East Chicago Street
Milwaukee, Wisconsin 53202
telephone 414.271.5500
madison 318 West Johnson Street, Suite
202
Madison, Wisconsin 53703
3
telephone 608.442.5300

DALGLEISH GILPIN PATTON ARCHITECTS
3005 First Street West
Charlottesville, Virginia 22903
743.977.4480
434.298.8700
info@dalgleish.com

PROJECT INFORMATION

MILWAUKEE OFFICE BUILDING

210 E. Knapp Street
Milwaukee, WI

ISSUANCE
DPD MINOR MODIFICATION

KEY PLAN

SHEET INFORMATION

PROJECT MANAGER ER
PROJECT NUMBER 215522-01
DATE 06/19/2017

SIGNAGE PLAN AND DETAILS

J-2