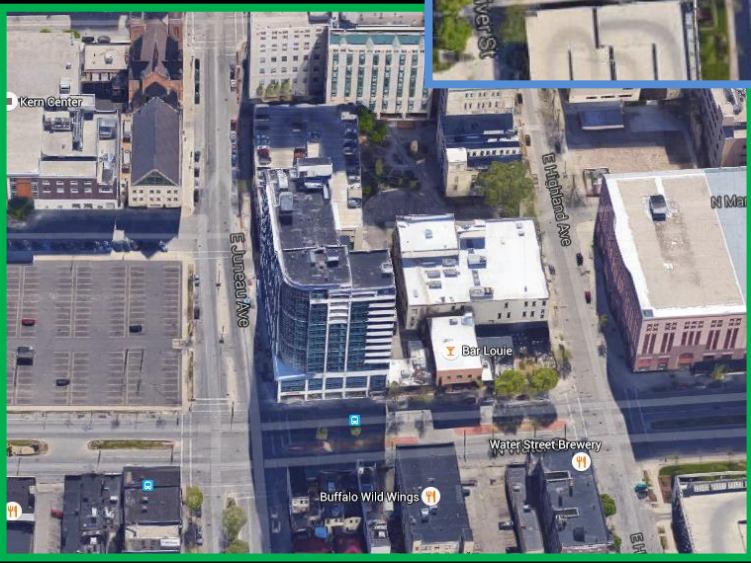
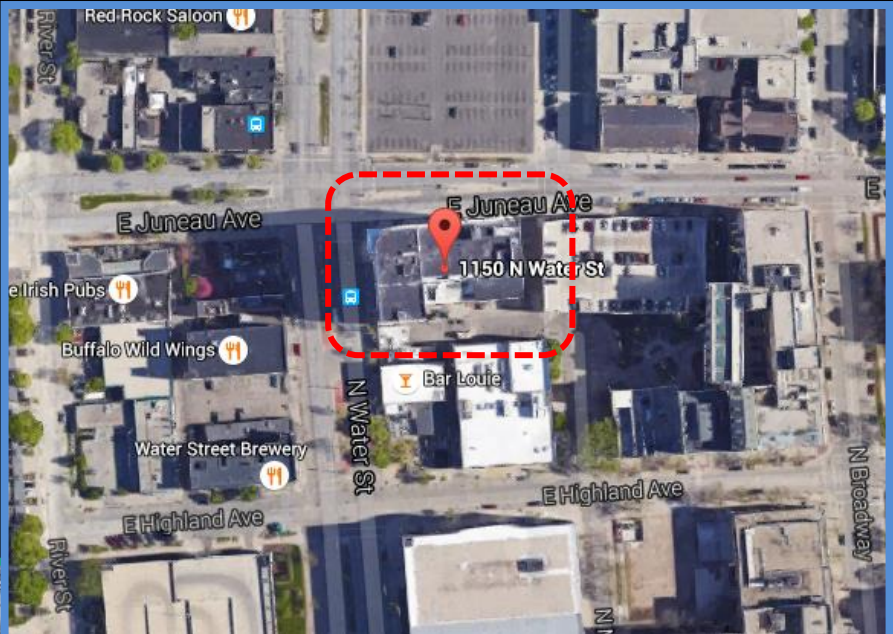
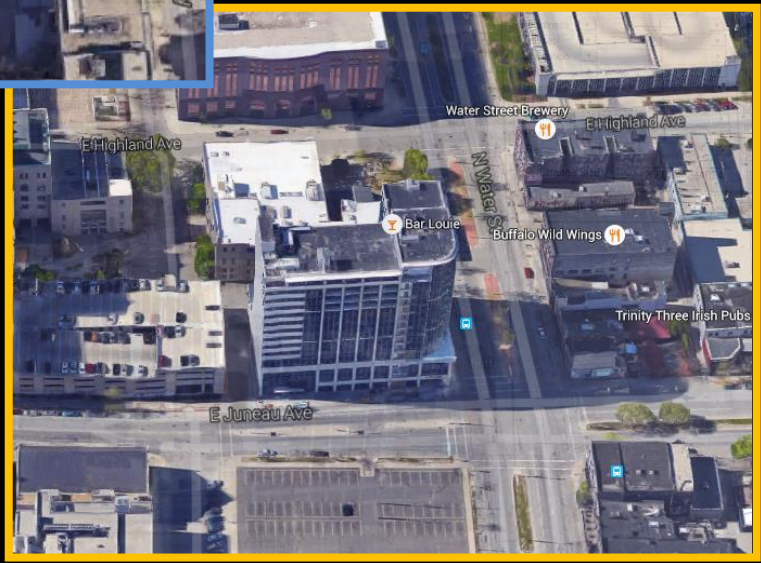


File No. 150334. Resolution relating to a minor modification to a Detailed Planned Development known as 1150 North Water Street for signage changes on land located on the east side of North Water Street, south of East Juneau Avenue, in the 4th Aldermanic District.

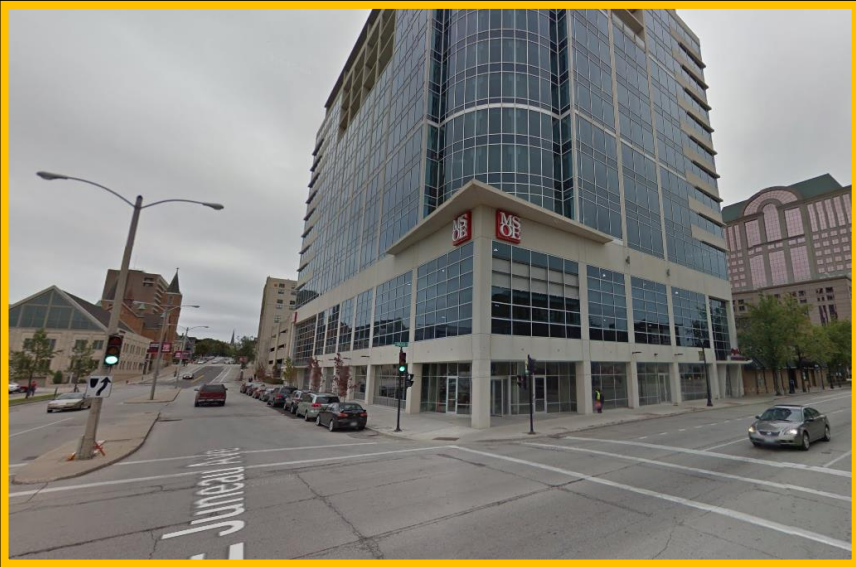


Aerial view, looking east



Aerial view, looking south

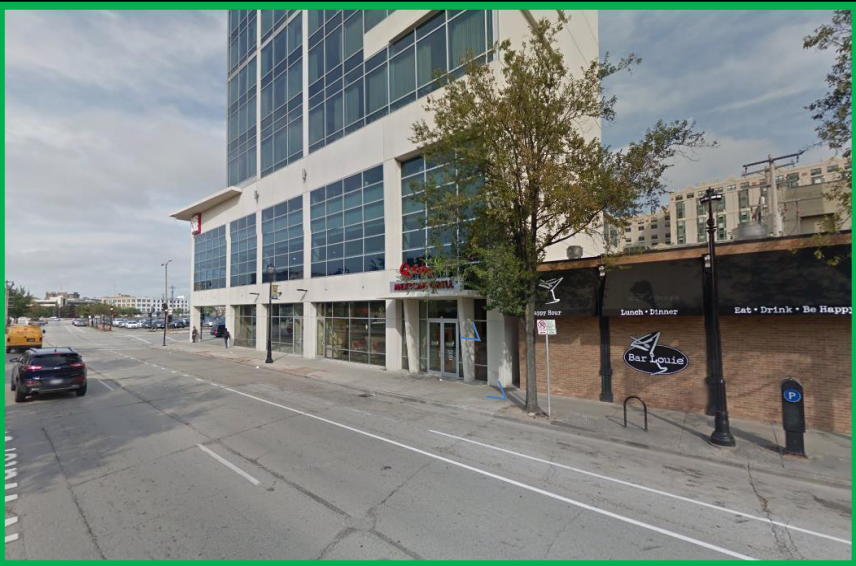
File No. 150334. Site Context Photos



View from East Juneau Avenue and North Water Street



View from West Juneau Avenue, looking southwest

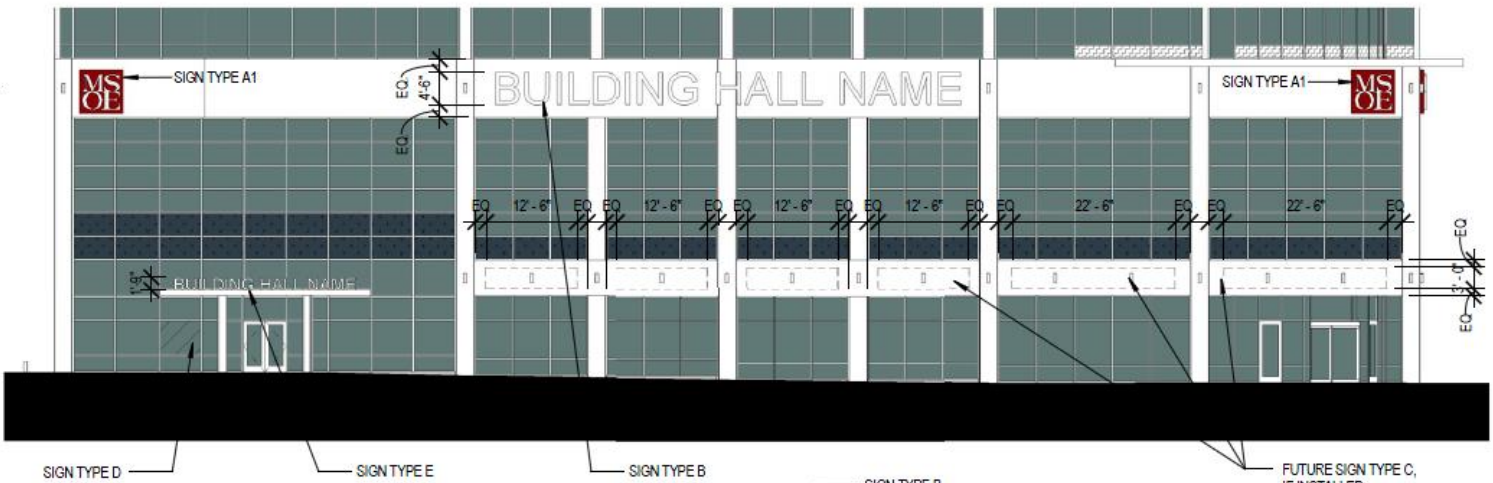


View from North Water Street, looking northeast

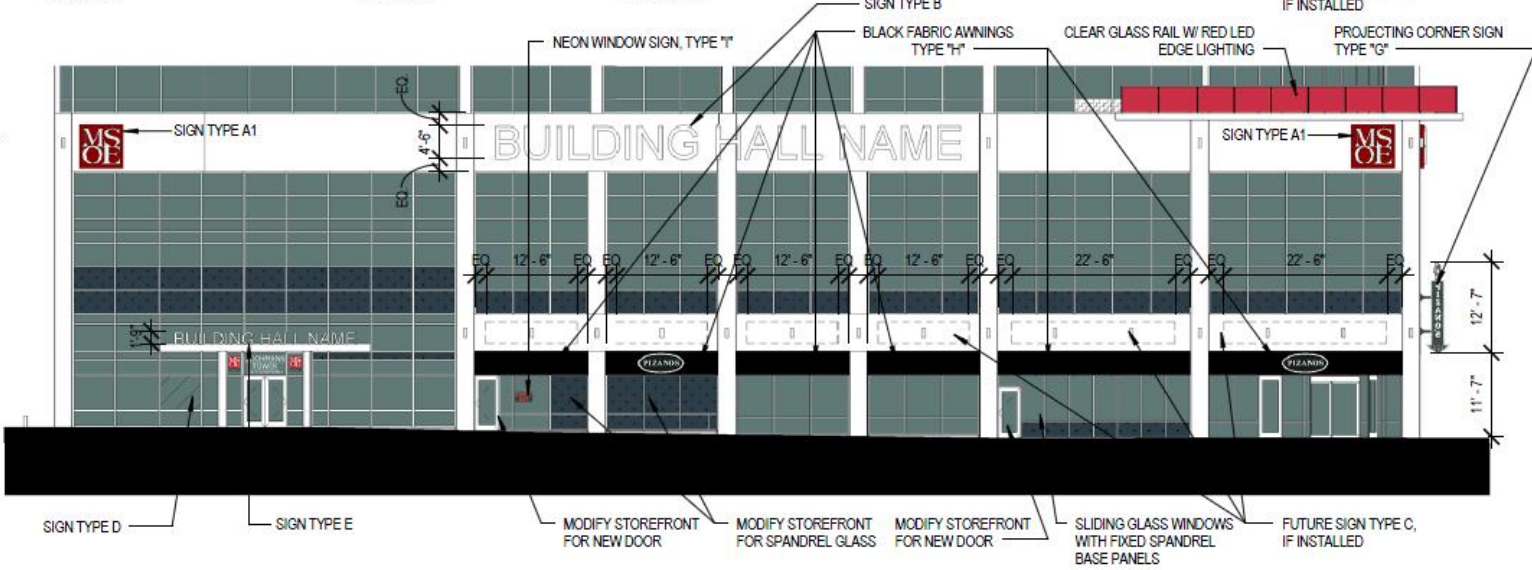


File No. 150334. Signage – North (Juneau Avenue) Elevations.

① PREVIOUS - APPROVED
1/16" = 1'-0"



② NEW - PROPOSED
1/16" = 1'-0"



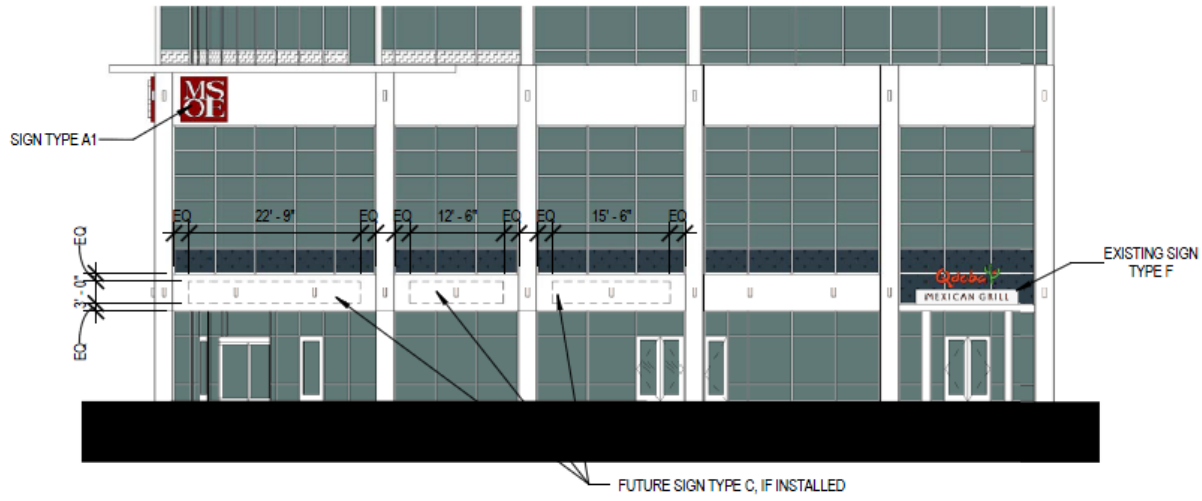
Drawing No.
A-201-R



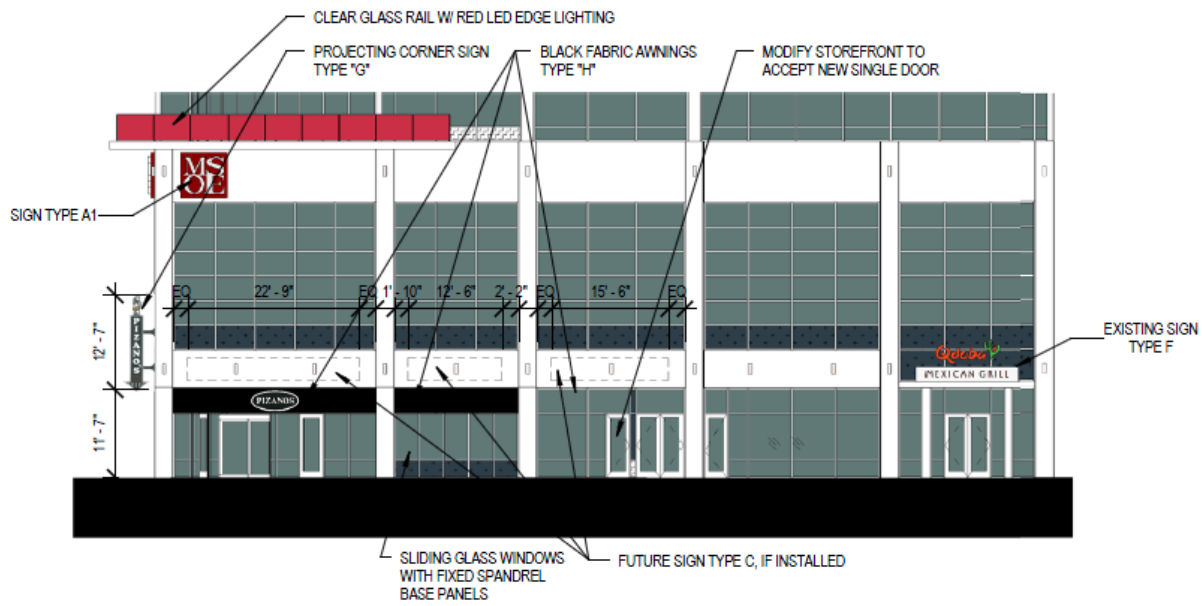
Title: DPD - NORTH ELEVATION UPDATE
 Project: MSOE 1150 N WATER ST. PHASE II
 Project Number: 12-115
 Date: 07/07/15
 Scale: 1/18" = 1'-0"

File No. 150334. Signage – West (Water Street) Elevations.

① PREVIOUS - APPROVED
1/16" = 1'-0"



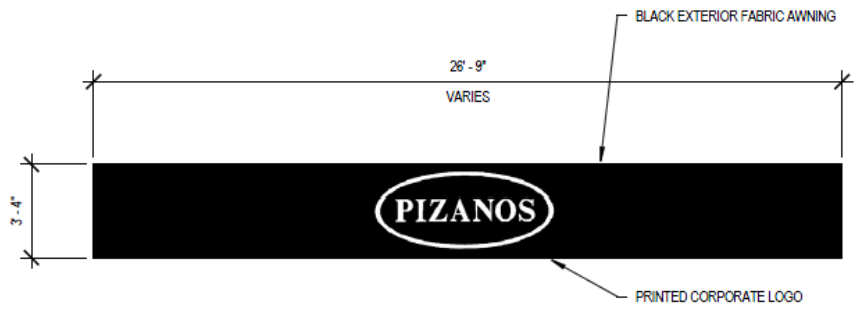
② NEW - PROPOSED
1/16" = 1'-0"



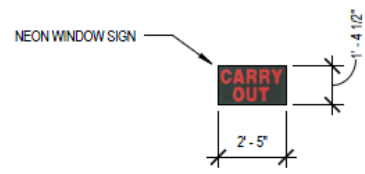
Drawing No.
A-204-R



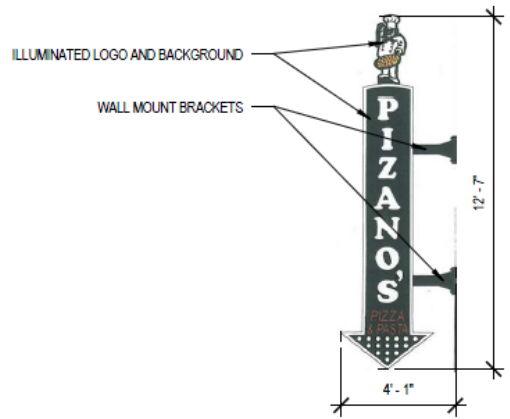
Title: DPD - WEST ELEVATION UPDATE
 Project: MSOE 1150 N WATER ST. PHASE II
 Project Number: 12-115
 Date: 07/07/15
 Scale: 1/16" = 1'-0"



② SIGN TYPE "H"
1/4" = 1'-0"



③ SIGN TYPE "I"
1/4" = 1'-0"



① SIGN TYPE "G"
1/4" = 1'-0"

