

# WAR MEMORIAL CENTER FOR THE PERFORMING ARTS ALTERATIONS HISTORY

Original War Memorial Center for the Performing Arts building and landscape; Opening September 1969  
Harry Weese Architects

Peck Pavilion Outdoor Theater and landscape berms; Opening 1982  
Miller Meier Associates & Architects

Chestnut Grove Precast Benches; Completed 1989  
Marcus Center / Milwaukee Concrete Products

Summer Food & Beverage SW Enclosure; Completed 1989  
Marcus Center

Removing all Italian Travertine Marble cladding and replacement with Biesanz Limestone and Granite; Completed 1994  
Engberg Anderson Architects

Redesign of west exterior stairs; Completed 1994  
Engberg Anderson Architects

New Loading Dock Structure and North Colonnade Infill Project, Completed 1995  
Kahler Slater Architects

East Entry Façade Redesign and Addition; Opening 1996  
Kahler Slater Architects

NE and SE Banner Poles Replacing small groves, Completed 1996  
Kahler Slater Architects

LED Lighting Cantilevered Structures; Completed 1997  
Focus Lighting, NY

Kidz Stage Riverfront Theater; Opening 2000  
Kahler Slater Architects

Vogel Hall Addition and NW Landscape Design; Opening 2016  
La Dallman Architects



Original War Memorial Center for the Performing Arts building and landscape; Opening September 1969  
Harry Weese Architects

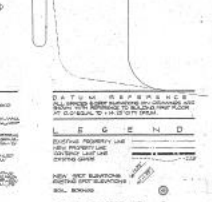
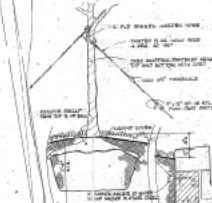
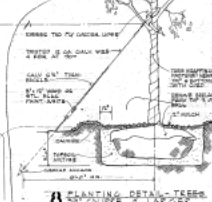
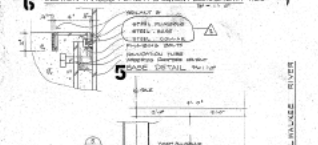
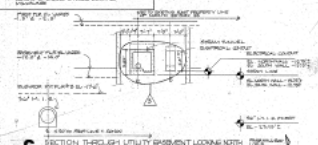
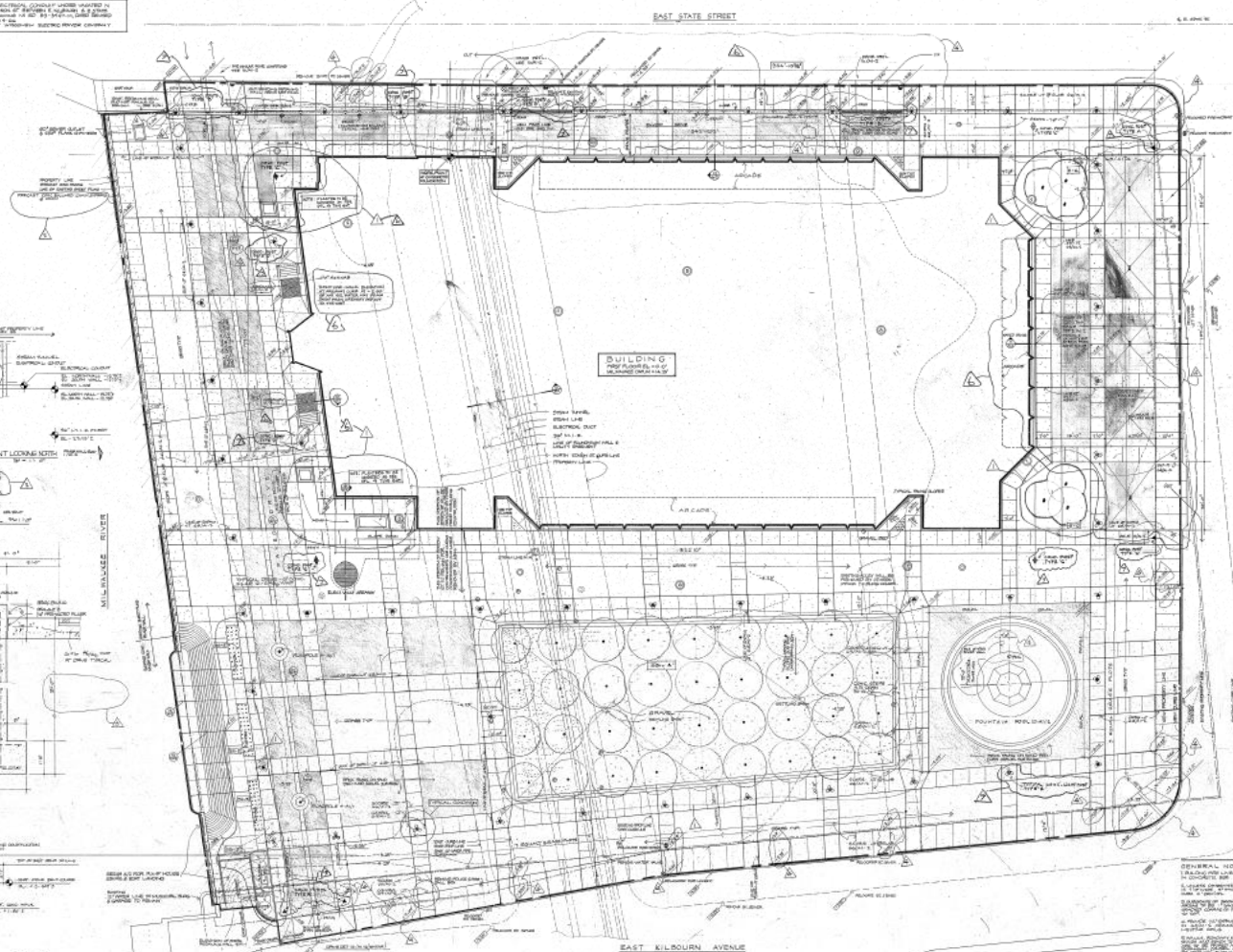






REFERENCE DRAWINGS

- 1. ARCHITECTURAL DRAWINGS, BUILDING
- 2. CIVIL ENGINEERING DRAWINGS, SITE
- 3. ELECTRICAL ENGINEERING DRAWINGS, SITE
- 4. MECHANICAL ENGINEERING DRAWINGS, SITE
- 5. PLANTING DETAIL, TREES
- 6. PLANTING DETAIL, TREES
- 7. PLANTING DETAIL, TREES
- 8. PLANTING DETAIL, TREES
- 9. PLANTING DETAIL, TREES

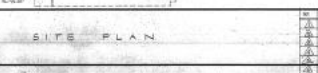


GENERAL NOTES:

1. ALL DIMENSIONS ARE TO FACE UNLESS OTHERWISE NOTED.
2. ALL UTILITIES TO BE DEEPER THAN SHOWN UNLESS OTHERWISE NOTED.
3. ALL UTILITIES TO BE DEEPER THAN SHOWN UNLESS OTHERWISE NOTED.
4. ALL UTILITIES TO BE DEEPER THAN SHOWN UNLESS OTHERWISE NOTED.
5. ALL UTILITIES TO BE DEEPER THAN SHOWN UNLESS OTHERWISE NOTED.
6. ALL UTILITIES TO BE DEEPER THAN SHOWN UNLESS OTHERWISE NOTED.
7. ALL UTILITIES TO BE DEEPER THAN SHOWN UNLESS OTHERWISE NOTED.
8. ALL UTILITIES TO BE DEEPER THAN SHOWN UNLESS OTHERWISE NOTED.
9. ALL UTILITIES TO BE DEEPER THAN SHOWN UNLESS OTHERWISE NOTED.
10. ALL UTILITIES TO BE DEEPER THAN SHOWN UNLESS OTHERWISE NOTED.

LEGEND

Symbol	Description
Circle with dot	Tree
Square with dot	Shrub
Triangle with dot	Plant
Circle with cross	Light
Square with cross	Sign
Circle with horizontal lines	Water
Square with horizontal lines	Sewer
Circle with vertical lines	Gas
Square with vertical lines	Electric
Circle with diagonal lines	Telephone
Square with diagonal lines	Cable



NO.	DATE	REVISION
1	10-15-64	ISSUED FOR PERMITS
2	11-15-64	REVISED PER COMMENTS
3	12-15-64	REVISED PER COMMENTS
4	1-15-65	REVISED PER COMMENTS
5	2-15-65	REVISED PER COMMENTS
6	3-15-65	REVISED PER COMMENTS
7	4-15-65	REVISED PER COMMENTS
8	5-15-65	REVISED PER COMMENTS
9	6-15-65	REVISED PER COMMENTS
10	7-15-65	REVISED PER COMMENTS

**THE MILWAUKEE COUNTY WAR MEMORIAL CENTER FOR THE PERFORMING ARTS**

THE ENGINEERS COLLABORATIVE  
SAMUEL R. LEWIS & ASSOCIATES  
BOLT BERANEK & NEWMAN

structural engineers  
mechanical engineers  
electrical engineers

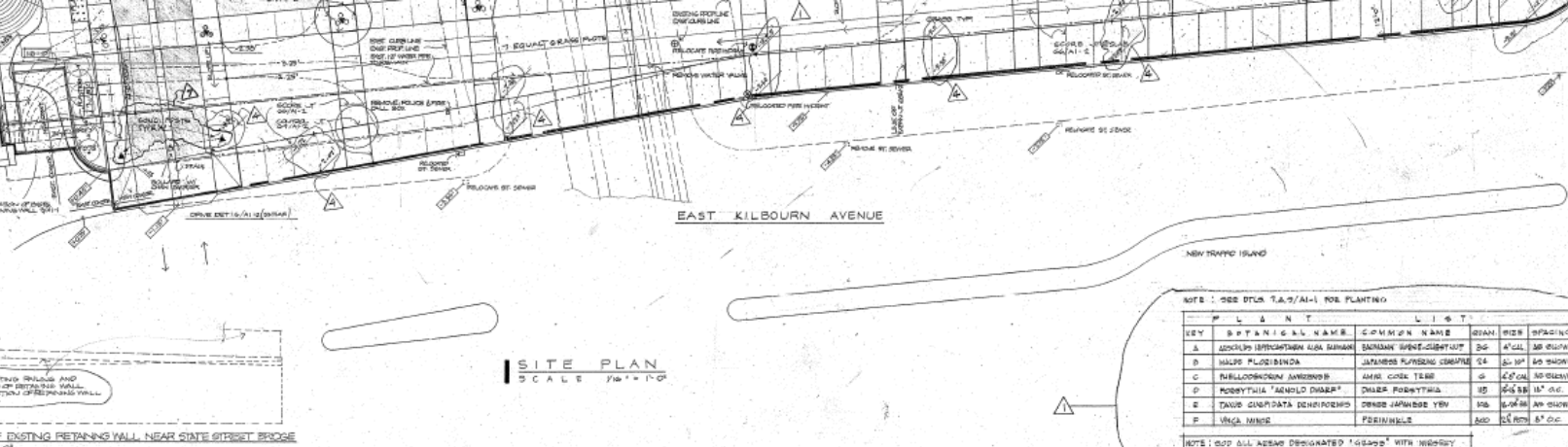
design  
design  
design

HARRY WEISE & ASSOCIATES  
GEORGE C. IZENHOUR

CONSTRUCTION SET  
architect & engineers  
draftsman - engineer







**GENERAL NOTES:**  
 1. BALDING FIRE LINES TO BE ENCASED IN CONCRETE. SEE 2.9/11103.  
 2. UNLESS OTHERWISE SHOWN, TYPOLOGICAL IS 2.5 IN. VERTICAL STITCH IN 6 IN. HORIZONTAL. SEE 2.9/11103.  
 3. REINFORCEMENT OF SOIL PLANS IN PROPOSED AREAS TO BE 4" DIA. 60# BARS @ 48" ON CENTER. CONCRETE COVERED BY 4" MIN. FINISH FLOOR TO TOP.  
 4. PROVIDE 12" MINIMUM JUMP SPACING IN 24" DIA. 60# BARS TO BE 4" MIN. FINISH FLOOR TO TOP.  
 5. WALLS, ROOFWAYS, ELEVATED WALKWAYS, BRIDGES AND OTHER TO BE CONSTRUCTED WITH 4" DIA. 60# BARS @ 48" ON CENTER. CONCRETE COVERED BY 4" MIN. FINISH FLOOR TO TOP TO PREVENT OVERLAP CRACKING.

**SITE PLAN**  
 SCALE 1/8" = 1'-0"

NOTE: SEE PLAN T.A. 2/11-1 FOR PLANTING

KEY	SYMBOL	PLANT NAME	COMMON NAME	QUANT	SIZE	SPACING
A	(Symbol)	WITCHAMUN	WITCHAMUN	25	4" DIA.	30' ON CENTER
B	(Symbol)	MALE FLORENCE	JAPANESE FLORENCE	14	4" DIA.	30' ON CENTER
C	(Symbol)	HELLOSHOEN	AMBI COLE TREE	10	4" DIA.	30' ON CENTER
D	(Symbol)	POPPY HILL	AMBI COLE TREE	10	4" DIA.	30' ON CENTER
E	(Symbol)	TAKE SUSPATA	ORANGE JAPANESE YEW	14	4" DIA.	30' ON CENTER
F	(Symbol)	YING WANG	POPPY HILL	10	4" DIA.	30' ON CENTER

NOTE: SEE ALL ANNOTATIONS DESIGNATED "GOOD" WITH HARRY WEESE & ASSOCIATES, CHICAGO, ILL. 60601.

**THE MILWAUKEE COUNTY WAR MEMORIAL  
 CENTER FOR THE PERFORMING ARTS**

THE ENGINEERS COLLABORATIVE  
 SAMUEL R. LEWIS & ASSOCIATES  
 BOLT BERANEK & NEWMAN

structural engineers   chicago  
 mechanical engineers   chicago  
 acoustical consultants   chicago

**HARRY WEESE & ASSOCIATES**  
 GEORGE C. IZENOUR

CONSTRUCTION SET 20-24-00  
 architects & engineers   chicago  
 theatre designer — engineer   new haven



Peck Pavilion Outdoor Theater and landscape berms; Opening 1982  
Miller Meier Associates & Architects





Chestnut Grove Precast Benches; Completed 1989  
Marcus Center / Milwaukee Concrete Products





Summer Food & Beverage SW Enclosure; Completed 1989  
Marcus Center





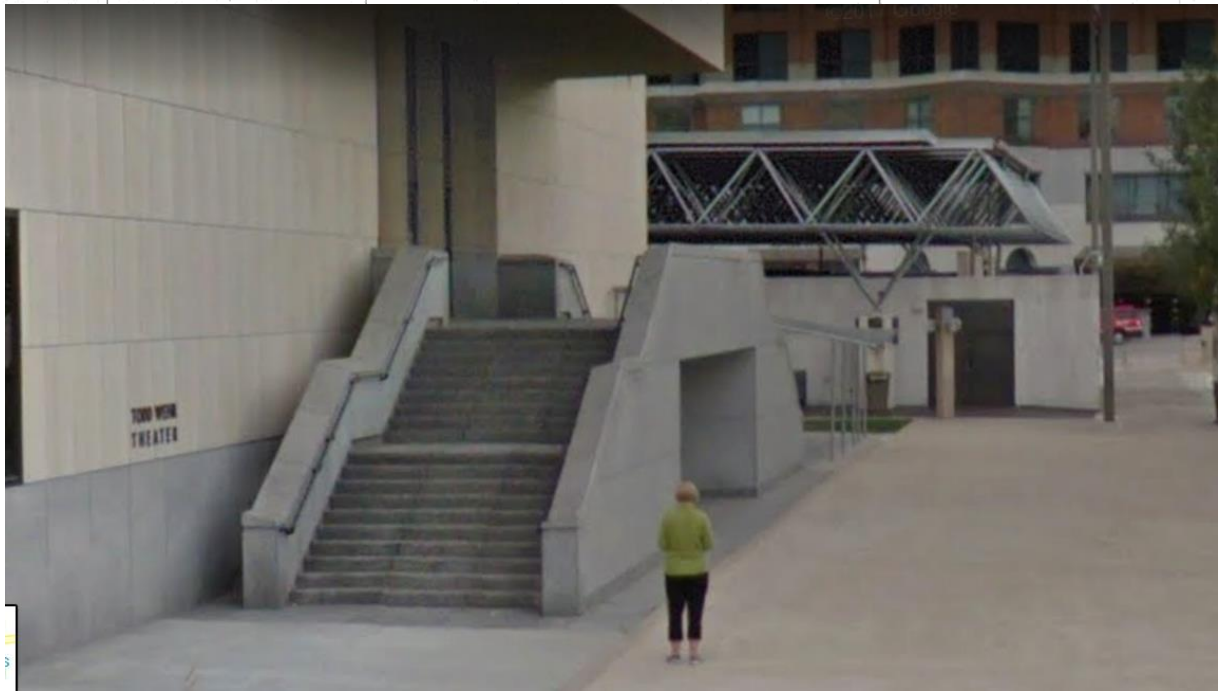
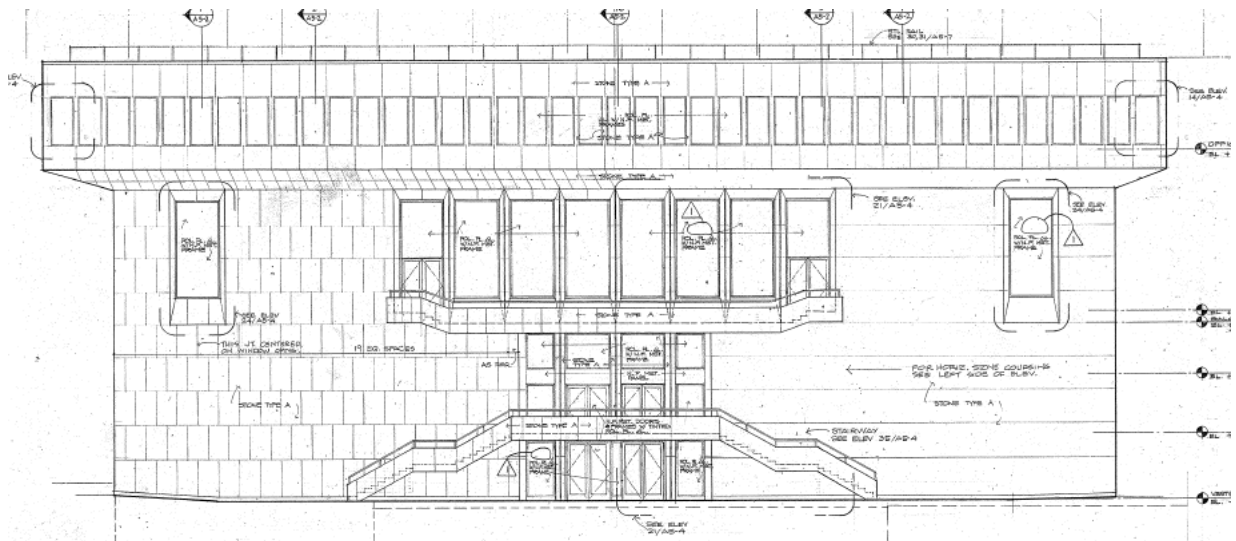
Removing all Italian Travertine marble cladding and replacement with limestone and granite;  
Completed 1994  
Engberg Anderson Architects





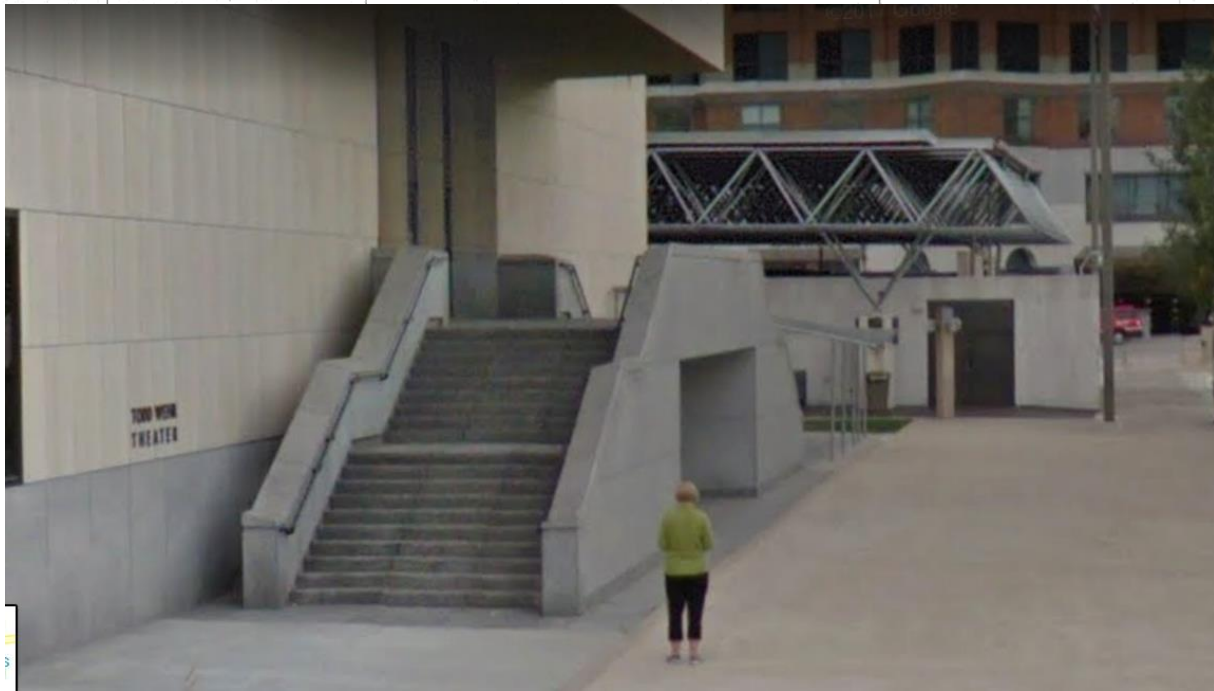
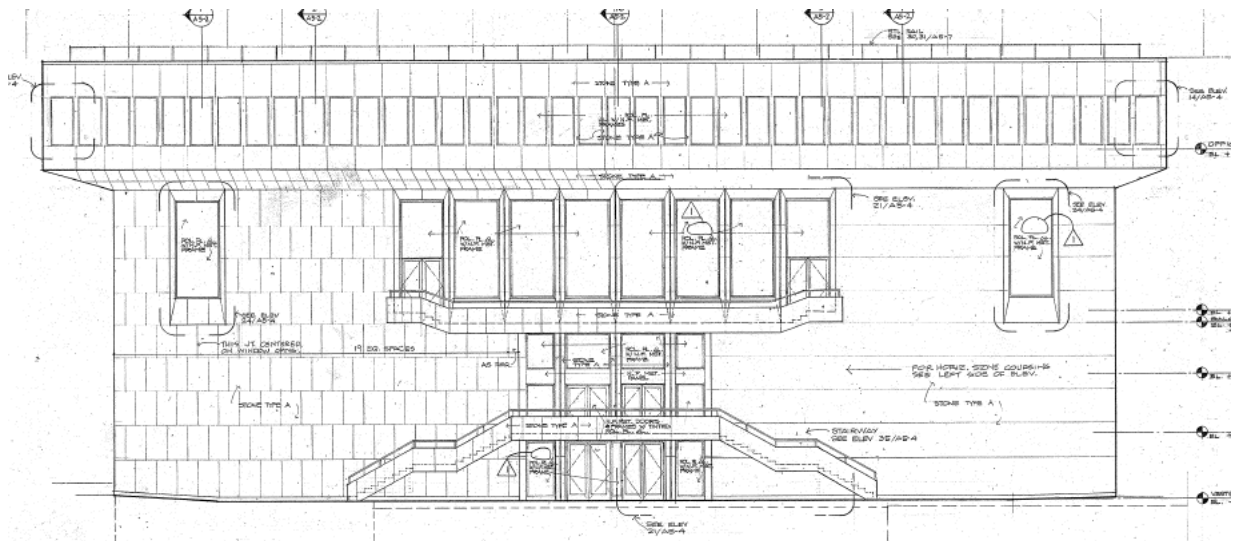


Removing all Italian Travertine marble cladding and replacement with limestone and granite;  
Completed 1994  
Engberg Anderson Architects



Redesign of west exterior stairs; Completed 1994  
Engberg Anderson Architects



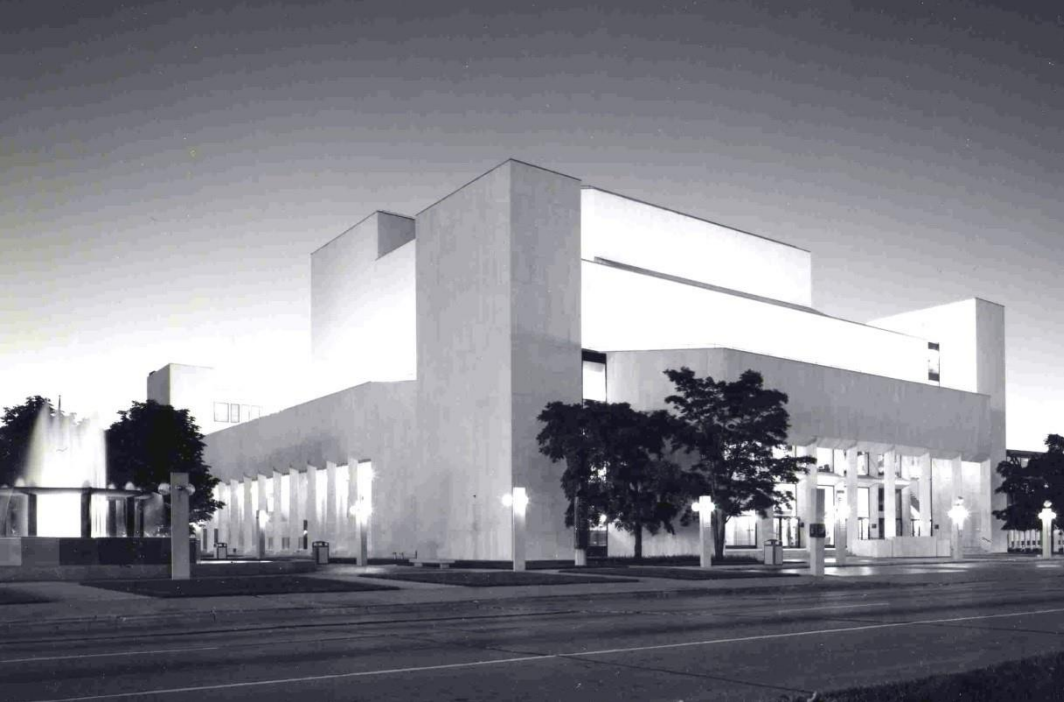


Redesign of west exterior stairs; Completed 1994  
Engberg Anderson Architects



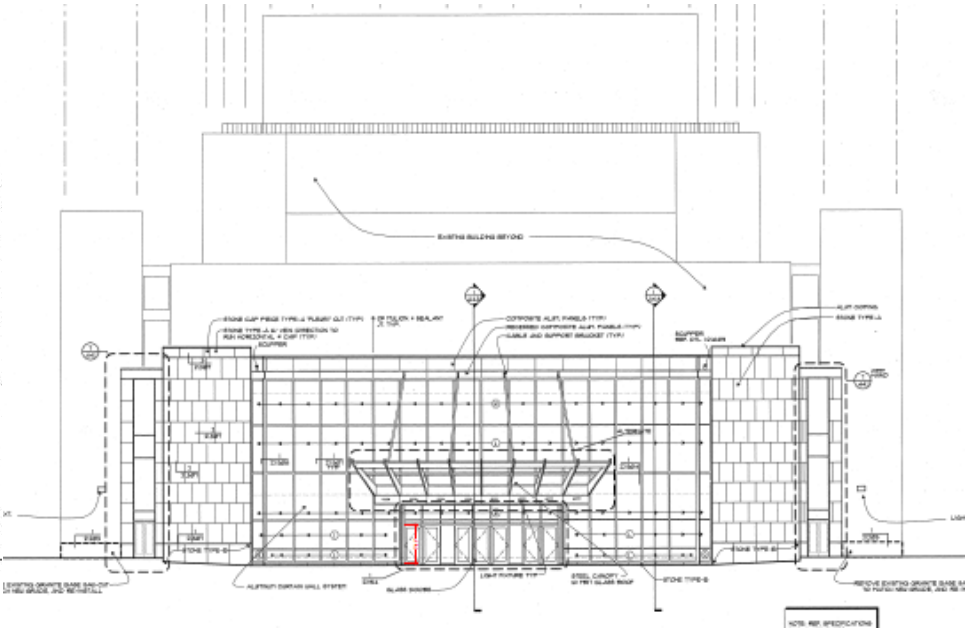
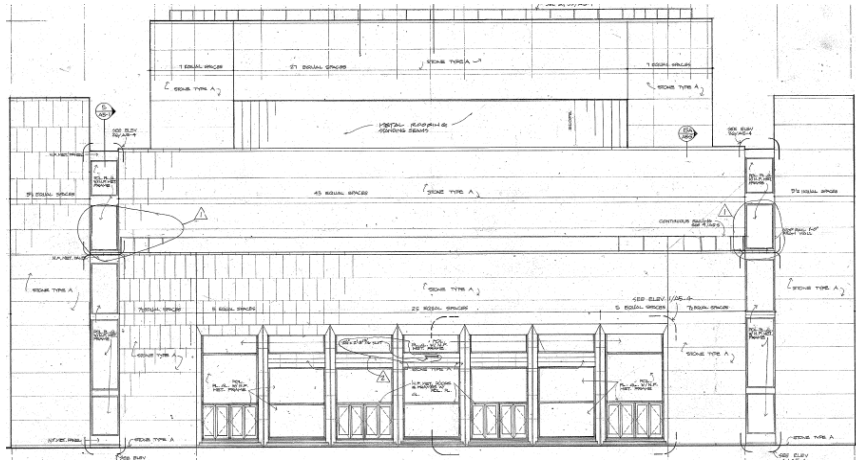
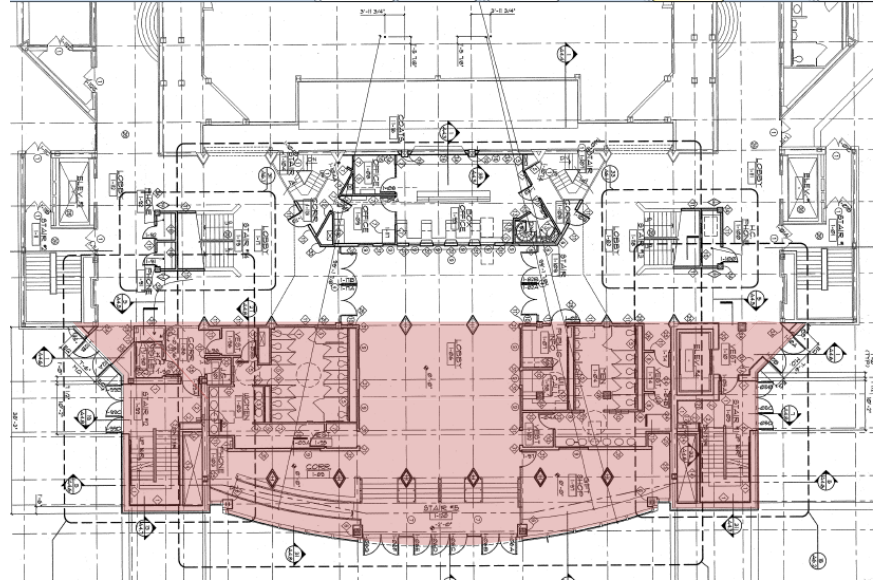
New Loading Dock Structure and North Colonnade Infill Project, Completed 1995  
Kahler Slater Architects





East Entry Façade Redesign and  
Addition; Opening 1996  
Kahler Slater Architects

NE and SE banner poles replacing  
small groves; Completed 1996  
Kahler Slater Architects



NOTE: REF. SPECIFICATIONS

East Entry Façade Redesign and Addition; Opening 1996  
 Kahler Slater Architects





LED Lighting Cantilevered Structures; Completed 1997  
Focus Lighting



Kidz Stage Riverfront Theater; Opening 2000  
Kahler Slater Architects





Vogel Hall Addition and NW Landscape Design; Opening 2016  
La Dallman Architects

