

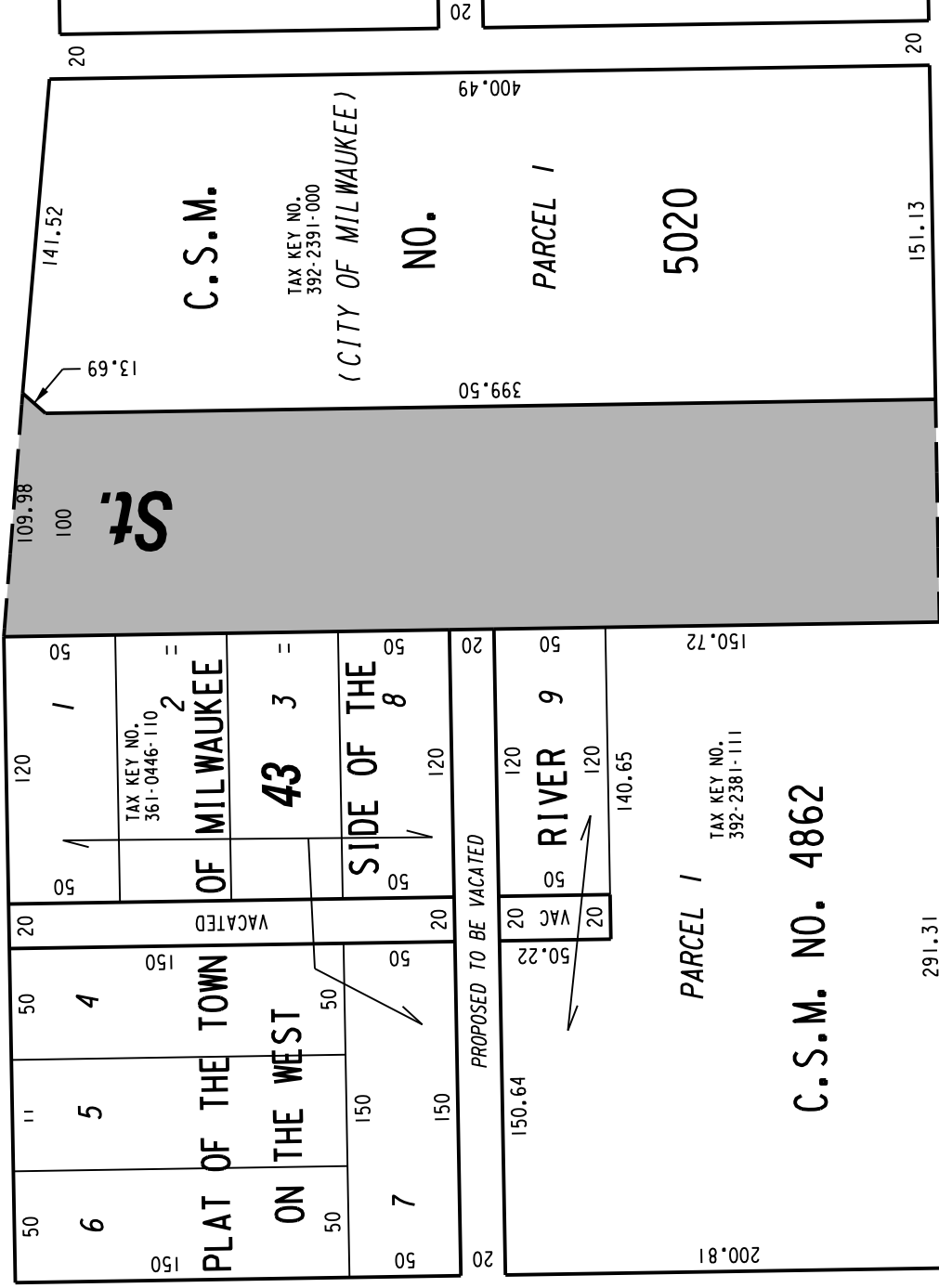
N.E. 1/4 SEC. 29, T.7N., R.22E.

392

SEC. LINE

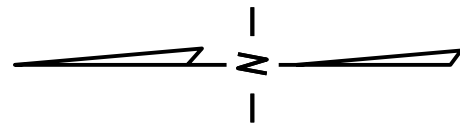
W. Juneau Ave.

Ave.



W. Highland Ave.

N. 4th St.



PARCEL 1

C.S.M. NO. 4822


 PUBLIC STREET RIGHT-OF-WAY
 PROPOSED TO BE DESIGNATED
 AS A PEDESTRIAN MALL

EXHIBIT "A"

FILE NO. 151444

INFRASTRUCTURE SERVICES DIVISION

MILWAUKEE, WISCONSIN

ASSIGNED TO: W. FUCHS

CH'K'D. BY: W. FUCHS

DRAWN BY: W.F.

DATE: ,

PROJECT/GRANT NO.:

SCALE: 1" = 80'

APPROVED BY:

PRELIMINARY MAP

CENTRAL DRAFTING & RECORDS MANAGER

CITY ENGINEER