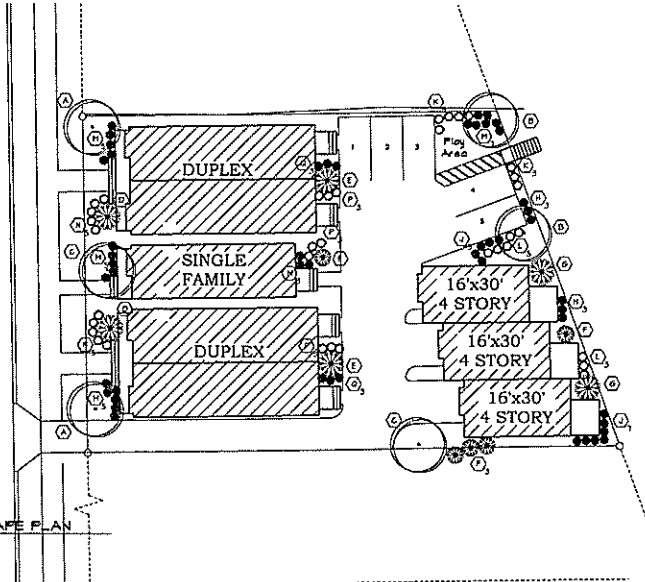


3 VACUITY MAP  
1/8" = 1'-0"



HUMBOLDT STREET ELEVATION

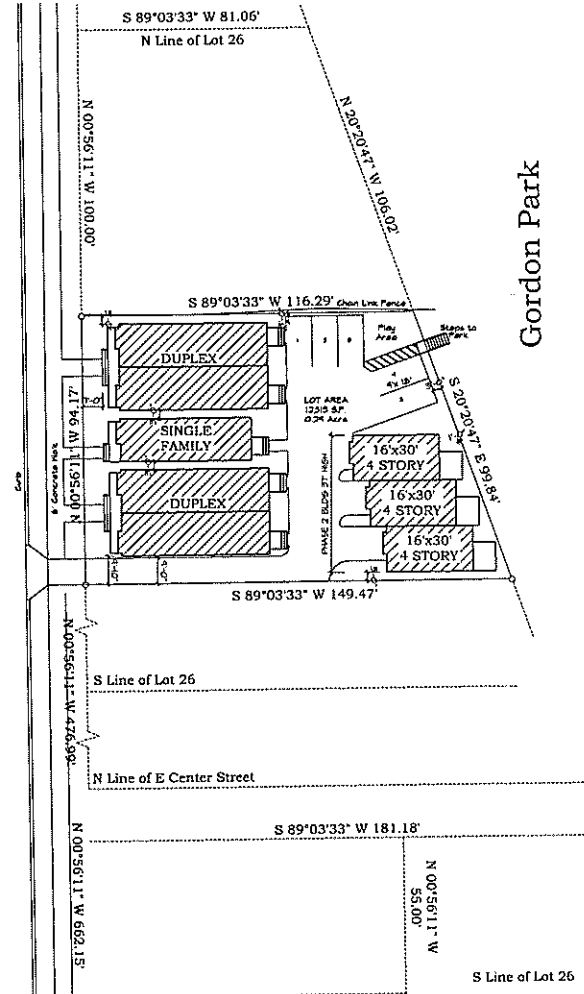
LANDSCAPE KEY		PLANT KEY				
TYPE	COMMON NAME	BOTANICAL NAME	PLANT SIZE	PLANTING SIZE	PLANTING DEPTH	PLANTING CODE
(1)	NEW PLANTING, TITE AND QUANTITY					
(A)	ADONIS	<i>Fragaria virginiana</i> 'Sweet'	30"x40"	8" D/B	2' D/P	
(B)	MAPLE, NORWAY EMERALD GREEN	<i>Acer platanoides</i> 'Emerald Green'	35'	8" D/B	2' D/P	
(C)	HONEY LOCUST, INTERNAL	<i>Gleditsia inaequalis</i> 'Imperial'	30'	8" D/B	2' D/P	
(D)	ORANGE BLOSSOM	<i>Yucca 'Tadpole'</i>	25" to 30"	8" D/B	1' D/P	
(E)	LIAC, JAPANESE TREE	<i>Styphelia pentandra</i>	60"	8" D/B	1' D/P	
(F)	HOUSTONIA, SAGE	<i>Sorbus aucuparia</i>	12' to 15'	8" D/B	1' D/P	
(G)	JUNIPER, PARSONS	<i>Juniperus horizontalis</i> 'Parson's'	8"x2"	8" D/B	1' D/P	
(H)	SPREA, GOLDEN PINE	<i>Spirea Douglasii</i> 'Goldflame'	30"	5" D/B	1" D/P	
(I)	GERANIUM, ALPINE	<i>Geranium alpinum</i>	30"	5" D/B	1" D/P	
(J)	JUNIPER, HONEY	<i>Juniperus horizontalis</i> 'Honey'	3'-4" high, 3'-5" wide	5" D/B	1" D/P	
(K)	JUNIPER, PRITZER	<i>Juniperus chinensis</i> 'Pfitzerana'	2' high, 3'-3' wide	5" D/B	1" D/P	
(L)	JUNIPER, HEAVY	<i>Juniperus horizontalis</i> 'Heavy'	10" high, 3'-3" wide	5" D/B	1" D/P	
(M)	JUNIPER, SARGENT	<i>Juniperus chinensis</i> 'Sargentii'	12"	3" D/B	1" D/P	
(N)	SPREA, SARGENT	<i>Spirea japonica</i> 'Sargentii'	24"x36"	3" D/B	1" D/P	
(O)	POTENTIAL, GOLD DROP	<i>Potentilla perfransa</i> 'Gold Drop'	24"	3" D/B	1" D/P	



2 LANDSCAPE PLAN  
1/8" = 1'-0"

NORTH HUMBOLDT BOULEVARD (100' R.O.W.)

1 SITE PLAN  
1" = 20'-0"



Gordon Park



Pafera, LLC.  
ARCHITECTURAL, ENGINEERING & CONSULTING  
2708 NORTH HUMBOLDT BOULEVARD  
MILWAUKEE, WISCONSIN 53234  
NEW BRITAIN, CT 06053  
TEL: 414-251-1100  
TEL: 860-651-1100

HUMBOLDT COMMONS

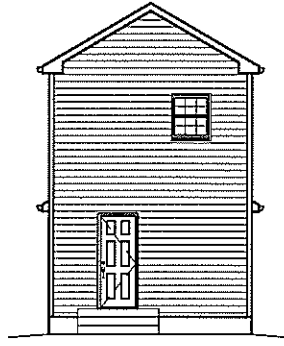
2708 NORTH HUMBOLDT BOULEVARD  
MILWAUKEE, WISCONSIN

PAFERA, LLC.  
SITE & LANDSCAPE PLANS

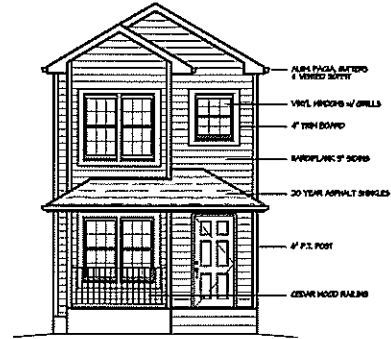
C-1

DATE: 05 NOVEMBER 07

PROJECT NUMBER: 07-115

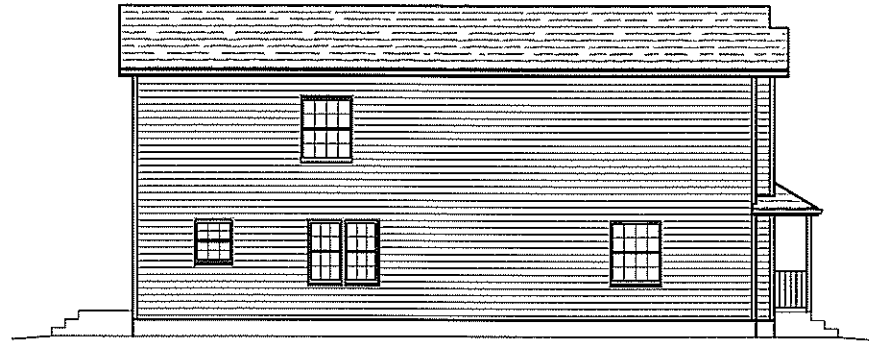


4 BACK ELEVATION  
1/4" = 1'-0"

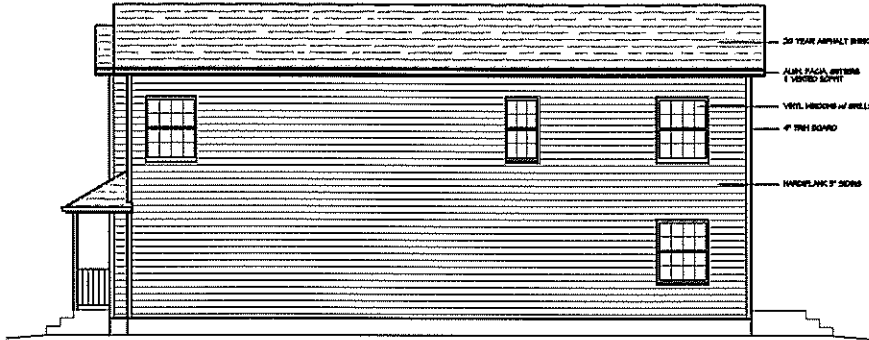


3 FRONT ELEVATION  
1/4" = 1'-0"

- ALUM. PAGA. SIDING  
& VINYL SIDING
- VINYL SIDING w/ GRILLS
- 4" TRIM BOARD
- HARDPLANK 2" SIDING
- 30 YEAR ASPHALT SHIKLES
- 4" PXL. POST
- CEGAR HOOD RAILING

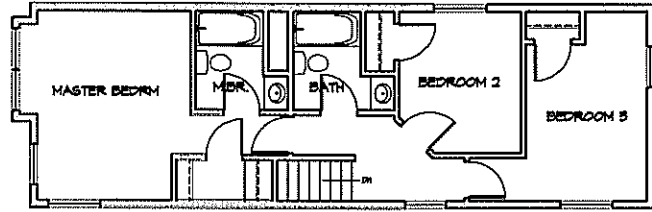


2 LEFT SIDE ELEVATION  
1/4" = 1'-0"

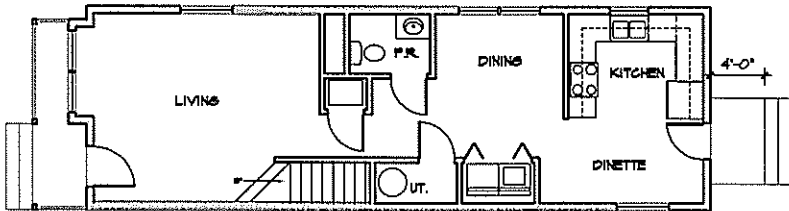


1 RIGHT SIDE ELEVATION  
1/4" = 1'-0"

- 30 YEAR ASPHALT SHIKLES
- ALUM. PAGA. SIDING  
& VINYL SIDING
- VINYL SIDING w/ GRILLS
- 4" TRIM BOARD
- HARDPLANK 2" SIDING



6 SECOND FLOOR PLAN  
1/4" = 1'-0"



5 FIRST FLOOR PLAN  
1/4" = 1'-0"

244.543.0000



**Patera, LLC.**

ARCHITECTURE & ENGINEERING  
2301 S. 10TH ST. SUITE 100  
TULSA, OK 74106  
918.438.4578 (PHONE)  
918.438.4578 (TEXT)

**HUMBOLDT COMMONS**

2301 S. 10TH ST. SUITE 100  
TULSA, OK 74106

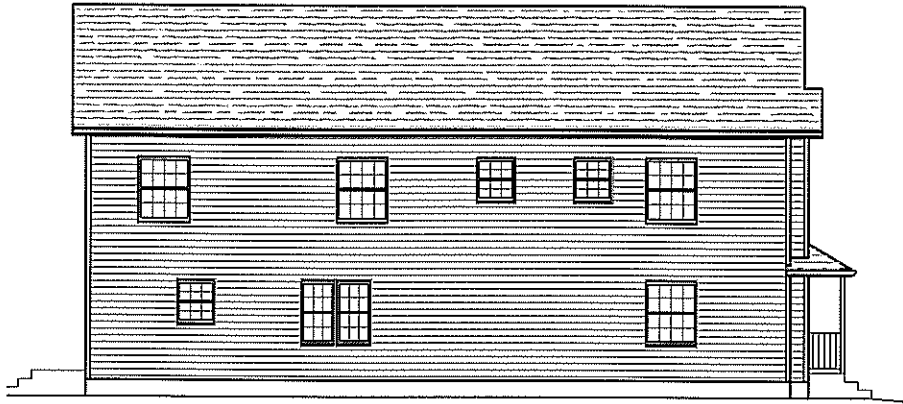
SHEET TITLE  
**SINGLE FAMILY ELEVATIONS & PLANS**

**A-1**

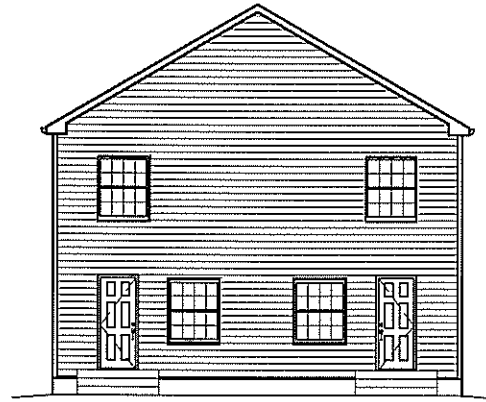
DATE: 05 NOVEMBER 07

PROJECT NUMBER: 07-141

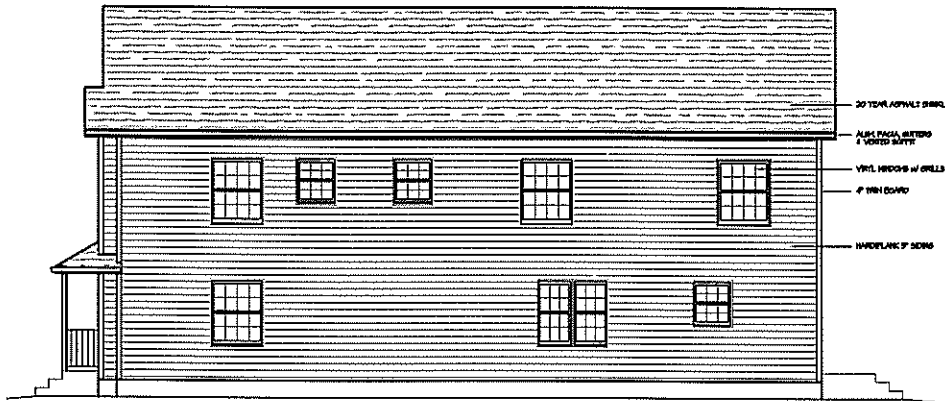
CONTRACT: JUST IT IS INVALID, FOR ANYONE TO USE OR REPRODUCE BY ANY MEANS ALL BE ANY PART OF THESE CONSTRUCTION DOCUMENTS WITHOUT THE EXPRESSED WRITTEN PERMISSION OF PATERA, LLC.



4 LEFT SIDE ELEVATION  
1/4" = 1'-0"



5 BACK ELEVATION  
1/4" = 1'-0"



3 RIGHT SIDE ELEVATION  
1/4" = 1'-0"

- 20 YEAR ASPHALT SHINGLES
- ALUM. PAGES, GUTTERS & VINED SOFFIT
- VINYL SIDINGS w/ GRILLS
- 4" TRIM BOARD
- HANDICAPED W/ ACCESS



1 FRONT ELEVATION  
1/4" = 1'-0"

- WOOD CEDAR W/ SIDING
- 3/4" x 6" FREE BOARD
- ALUM. PAGES, GUTTERS & VINED SOFFIT
- VINYL SIDINGS w/ GRILLS
- 4" TRIM BOARD
- HANDICAPED W/ ACCESS
- 20 YEAR ASPHALT SHINGLES
- 6" P.F.T. FLOOR
- WOODEN HOOD PANELS

ARCHITECT  
PATERA, LLC



**Patera, LLC.**  
ARCHITECTS AND ENGINEERS  
1801 S. W. 11th Street, Suite 100  
Fort Lauderdale, FL 33304  
TEL: 305-467-7776 (LOCAL)  
FAX: 305-467-7776 (LOCAL)

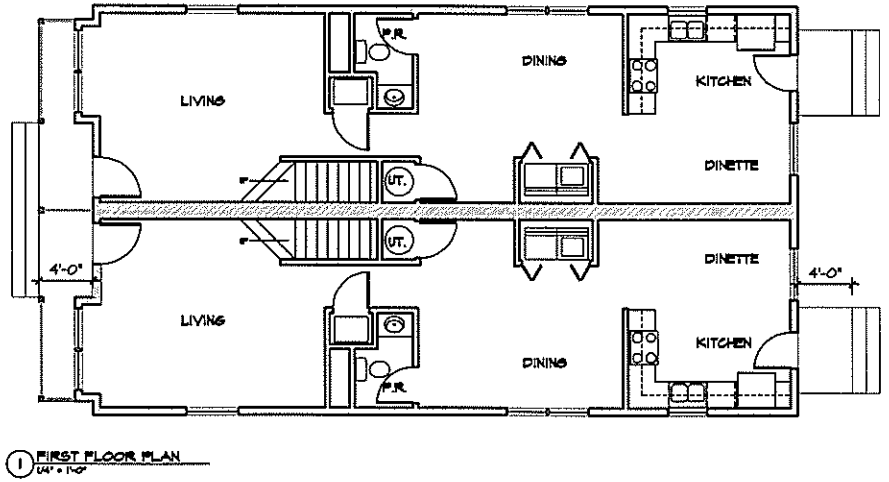
HUMBOLDT COMMONS

275 S. W. 11th Street, Suite 100  
Fort Lauderdale, FL 33304  
CALL IT BY: DUPE ELEVATIONS

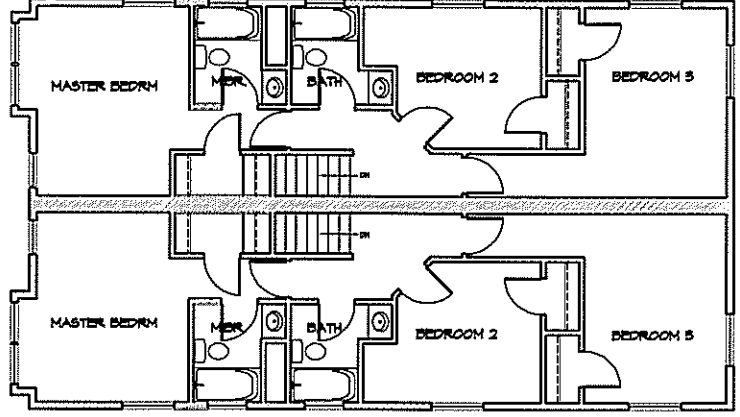
A-2

DATE: 05 NOVEMBER 07  
PROJECT NUMBER: 07-144

CONTRACT: 2007-11-14 HUMBOLDT COMMONS FOR LIVING TO USE OR IMPROVE BY ANY PERSONS ALL OR ANY PORTION OF THESE DRAWINGS, DOCUMENTS, SPECIFICATIONS, THE EXPRESS WRITTEN PERMISSION OF PATERA, LLC.



1 FIRST FLOOR PLAN  
1/4" = 1'-0"



2 SECOND FLOOR PLAN  
1/4" = 1'-0"

DATE: 05 NOVEMBER 07  
PROJECT NUMBER: 07-141

A-3

HUMBOLDT COMMONS  
SHEET TITLE:  
DUPEX FLOOR PLANS  
FOR ALL TRADES  
EXCEPT MECHANICAL  
ELECTRICAL, AND PLOMBING

Patera, LLC.  
ARCHITECTS  
2021 Avenue 41st East  
Suite 100  
Durham, NC 27705  
919-486-4716 (PHONE)  
919-486-7316 (FAX)

EXHIBIT  
A-3 ARCHITECTURAL DRAWINGS

CONSENT: 2007 IS UNLAWFUL FOR ANYONE TO USE OR REPRODUCE IN ANY MANNER, ALL OR ANY PORTION OF THESE CONSTRUCTION DOCUMENTS WITHOUT THE EXPRESS WRITTEN PERMISSION OF PATERA, LLC.