

CANOPY MATERIALS

1. POWDER-COATED STEEL TIE RODS
2. POWDER-COATED STEEL JOISTS & TUBE BEAM STRUCTURE
3. GALVANIZED, CORRUGATED STEEL DECKING (ROOFING MATERIAL)



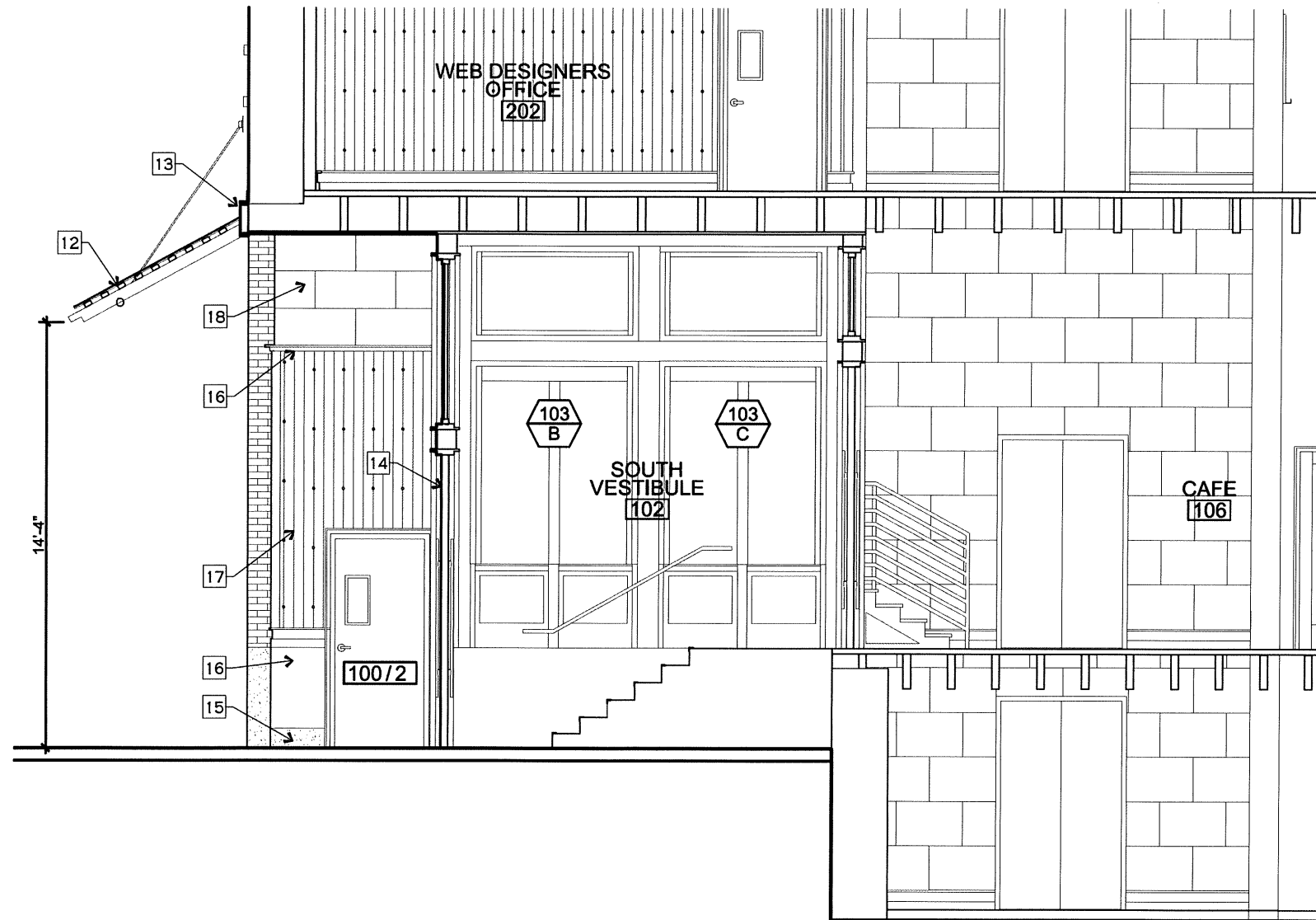
STAMMLAND WALKER'S POINT OFFICES

MILWAUKEE, WISCONSIN

AUGUST 18, 2014

COPYRIGHT 2014 THINK DESIGN LLC

- 12 NEW ENTRY CANOPY. POWDER COATED STEEL TIE RODS, STEEL JOISTS & STEEL BEAM. ROOFING TO BE GALVANIZED STEEL DECKING.
- 13 NEW WALL FLASHING ABOVE CANOPY ROOF
- 14 WOOD FRAMED ENTRANCE, STAINED
- 15 EXPOSED CONCRETE BASE OF WALL
- 16 DOUG FIR WOOD, STAINED
- 17 CORRUGATED, GALVANIZED STEEL DECKING (VERTICAL ORIENTATION) W/ EXPOSED FASTENERS
- 18 GALVANIZED STEEL SHEET METAL INTERLOCKING TILES



**3 PARTIAL VESTIBULE ELEVATION**

0' 2' 4' 10' Scale: 3/16" = 1'-0"



STAMMLAND WALKER'S POINT OFFICES

MILWAUKEE, WISCONSIN

AUGUST 18, 2014

COPYRIGHT 2014 THINK DESIGN LLC



STAMMLAND WALKER'S POINT OFFICES

MILWAUKEE, WISCONSIN

AUGUST 18, 2014

COPYRIGHT 2014 THINK DESIGN LLC

T.O. NORTH PARAPET  
149'-5"

JOIST BEARING  
141'-5 1/2"

THIRD LEVEL FINISH FLOOR  
128'-9 1/2"

JOIST BEARING  
127'-4 3/4"

SECOND LEVEL FINISH FLOOR  
115'-4 3/4"

JOIST BEARING  
114'-0"

MAIN LEVEL FINISH FLOOR (EAST)  
100'-0"

JOIST BEARING  
98'-7 1/4"

BASEMENT LEVEL FINISH FLOOR  
91'-2 1/4"

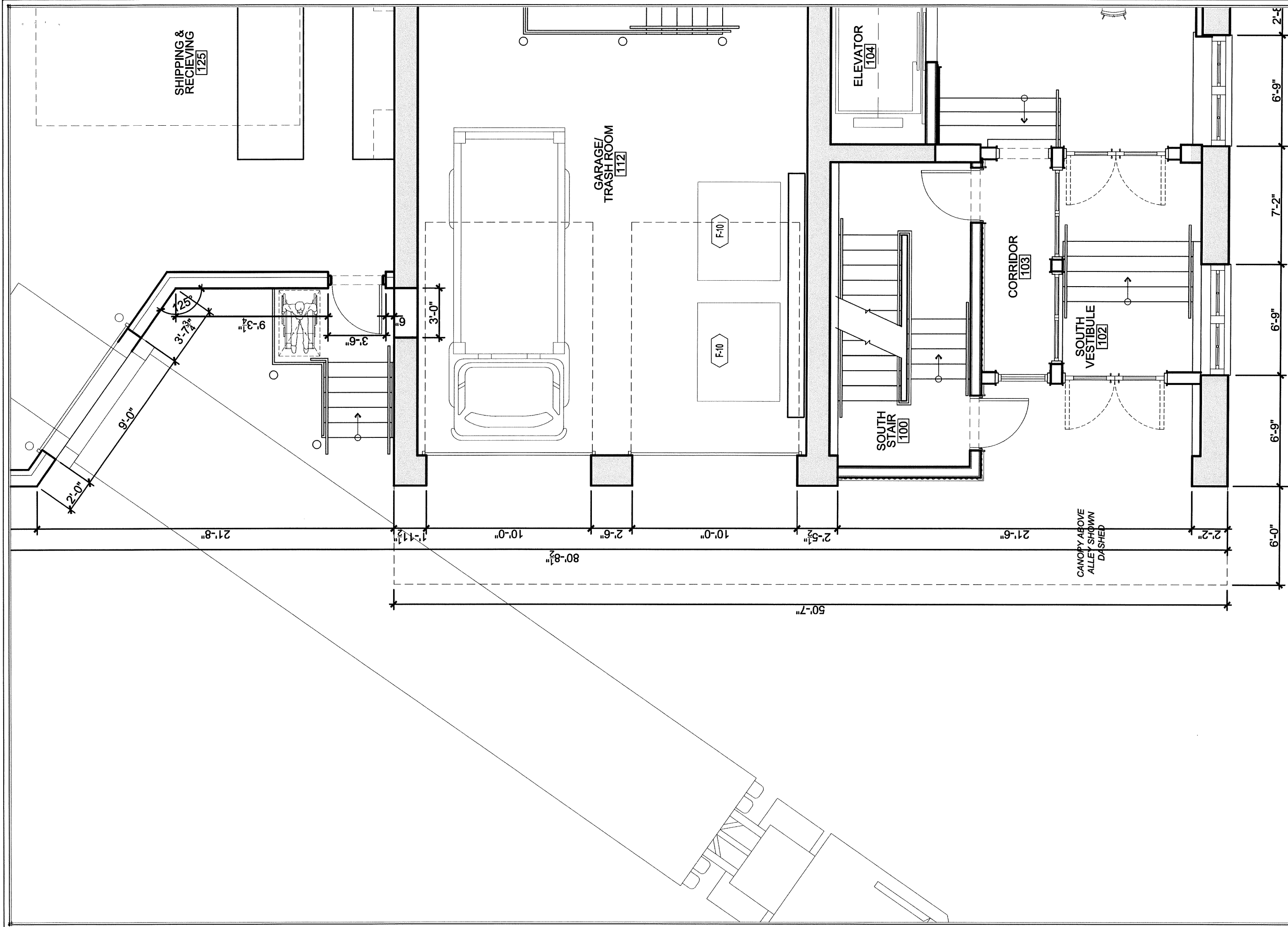
NEW SKYLIGHT

NEW CANOPY

NEW CONST.

NEW CONST.

1 SOUTH ELEVATION  
0' 2' 4' 10'



**1 MAIN LEVEL FLOOR PLAN**

Scale: 3/16" = 1'-0"  
 0' 2' 4' 10'



PLAN NORTH