



Certificate of Appropriateness

Milwaukee Historic Preservation Commission/841 N Broadway/Milwaukee, WI 53202/phone 414-286-5722

Property Description of work

901 W. Winnebago St., Pabst Brewery Historic District

Install three (3) 45 sq. ft. projecting banners per the attached specs

Date issued 8/6/2024

In accordance with the provisions of Section 320-21 (11) and (12) of the Milwaukee Code of Ordinances, the Milwaukee Historic Preservation Commission has issued a certificate of appropriateness for the work listed above. The work was found to be consistent with preservation guidelines. The following conditions apply to this certificate of appropriateness:

Mounting posts for signs shall be drilled into mortar joints only and not into the face of any brick or stone. Any surface-mounted electrical conduit shall be painted to match surrounding building material.

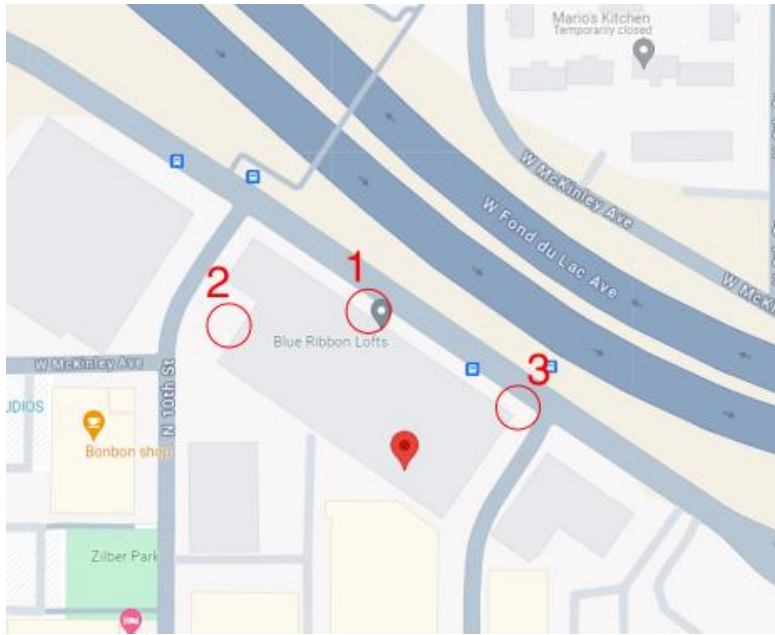
All work must be done in a craftsman-like manner. Staff must approve any changes or additions to this certificate before work begins. Work that is not completed in accordance with this certificate may be subject to correction orders or citations. If you require technical assistance, please contact Historic Preservation staff as follows: Phone: (414) 286-5722 E-mail: hpc@milwaukee.gov.

Permits and timeline

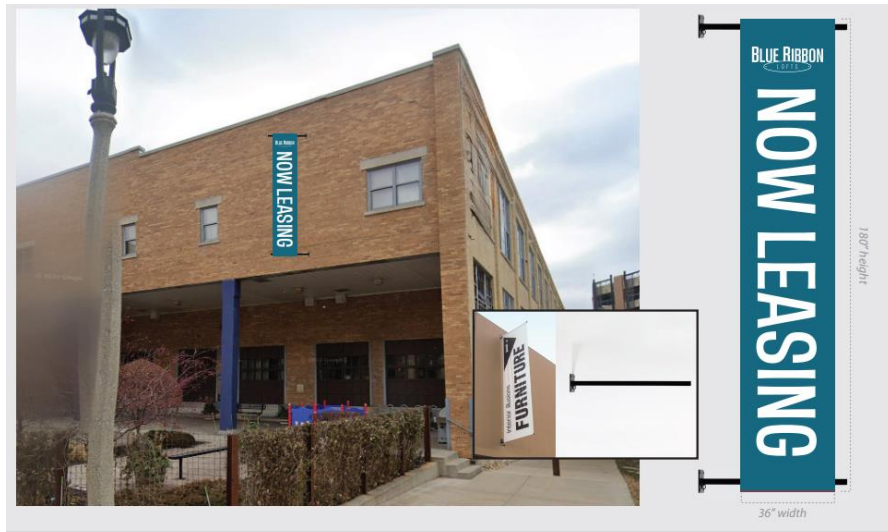
You are responsible for determining if permits are required and obtaining them prior to commencing work. Consult the Development Center on the web or by telephone for details: www.milwaukee.gov/lms - (414) 286-8210. If permits are not required, work must be completed within one year of the date this certificate was issued. If permits are required, permits must be obtained within one year of the date this certificate was issued.

City of Milwaukee Historic Preservation

Copies to: Development Center, Ald. Bauman



Sign locations



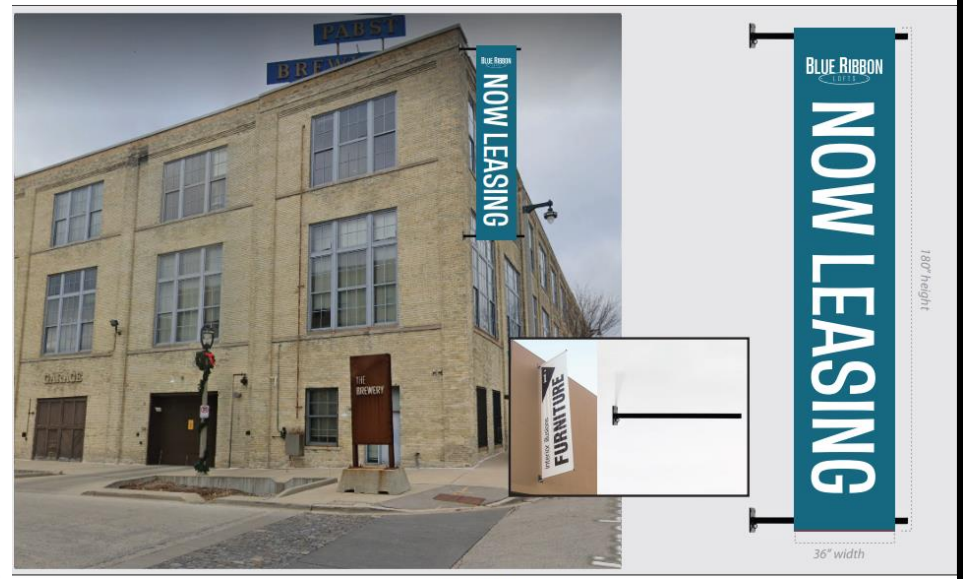
36" w x 180" h size
 18oz Blockout Banner Material w/ Digital Print | Double Sided | 3 Inch Pole Pockets on Top & Bottom | Reinforced Corners | Grommets in all 4 corners
 traight Arm Banner Brackets | Wall Mount | Welded Steel - Powder Coated Black | Square Tube Arms | 2 Arms Per Banner | 38" Long Arm for 36" wide Banner | 6x6 Mounting Plates

Proposed sign 1



36" w x 180" h size
 18oz Blockout Banner Material w Digital Print | Double Sided | 3 Inch Pole Pockets on Top & Bottom | Reinforced Corners | Grommets in all 4 corners
 traight Arm Banner Brackets | Wall Mount | Welded Steel - Powder Coated Black | Square Tube Arms | 2 Arms Per Banner | 38" Long Arm for 36" wide Banner | 6x6 Mounting Plates

Proposed sign 2



36" w x 180" h size
 18oz Blockout Banner Material w Digital Print | Double Sided | 3 Inch Pole Pockets on Top & Bottom | Reinforced Corners | Grommets in all 4 corners
 traight Arm Banner Brackets | Wall Mount | Welded Steel - Powder Coated Black | Square Tube Arms | 2 Arms Per Banner | 38" Long Arm for 36" wide Banner | 6x6 Mounting Plates

Proposed sign 3