



Certificate of Appropriateness

Milwaukee Historic Preservation Commission/200 E. Wells Street/Milwaukee, WI 53202/phone 414-286-5712/fax 414-286-3004

Property	3360 – 70 N. Sherman Boulevard	Townsend School, Sherman Boulevard HD
Description of work	Install insect screens and security screens as shown in attachments. On Sherman Boulevard the security screens will be installed only on the ground level. WHS case 23-0578, no adverse effect finding dated 5/18/2023.	
Date issued	6/2/2023	PTS ID N/A

In accordance with the provisions of Section 320-21 (11) and (12) of the Milwaukee Code of Ordinances, the Milwaukee Historic Preservation Commission has issued a certificate of appropriateness for the work listed above. The work was found to be consistent with preservation guidelines. The following conditions apply to this certificate of appropriateness: N/A

All work must be done in a craftsman-like manner, and must be completed within one year of the date this certificate was issued. Staff must approve any changes or additions to this certificate before work begins. Work that is not completed in accordance with this certificate may be subject to correction orders or citations. If you require technical assistance, please contact hpc@milwaukee.gov.

If permits are required, you are responsible for obtaining them from the Milwaukee Development Center. If you have questions about permit requirements, please consult the Development Center's web site, www.milwaukee.gov/lms, or call (414) 286-8210.

City of Milwaukee Historic Preservation Staff

Copies to: Development Center, Ald. Rainey, Ald. Stamper



March 31st, 2023

State Historic Preservation Office

Attention: Paul Porter
816 State Street
Madison, WI 53706

RE: Project Name: Townsend School
3360 N. Sherman Blvd.
Milwaukee, WI 53216
Quorum Architect's Project Number: 21026.00

Townsend School is a 3-story masonry building from 1927 with primarily glass block windows at the ground level and wood, single-hung windows at the upper levels. As a part of the ESSER II (Elementary and Secondary School of Emergency Relief) scope of work, emergency funding by CRRSAA (Coronavirus Response and Relief Supplemental Appropriations Act) has been provided to address the impact of COVID-19 on elementary and secondary schools. To address the Priority Areas of ESSER II funding, which include accelerated learning, health & wellness, and facilities, we are proposing to install insect screens and security screens across all facades to varying degrees. By providing insect screens, we are blocking unwelcome pests from entering the building as well as directly improving the natural ventilation within the classrooms to make for a cleaner environment. By providing security screens, we are improving the overall safety and welfare of the students and staff by creating a more secure environment.

Insect screens are to be provided at the operable portion of the first, second and third floor exterior windows, and are to be secured into the window frame as shown in the attached details.

Security screens are to be provided at all areas prone to security issues and areas prone to playground related damage. They also double as insect screens where the underlying window is operable. Locations of security screens include all ground floor windows as well as windows lower than 10'-0" above grade, along easily accessible roof planes and fire escapes, and at facades adjacent to playgrounds at the first two floors. They are to be fixed in place by securing into the sides of the masonry or wood opening to create a reveal mount as shown in the attached details. They are to be divided to reflect the geometry of the existing window beyond, particularly at meeting rails, etc.

Overall, the security screen proposal has a very minimal visual impact – specifically at the primary façade along Sherman Blvd. as only the ground level windows are impacted. Those windows are small, deeply recessed, and mostly glass block.

All the damaged and unsightly screens are to be replaced with new screens. The aluminum frame system basis of design product is Tapco with an almond frame finish and an anodized screen finish.

Refer to attachments for screen locations and applications.

Quorum Architects, Inc.



Architectural Design • Interior Design • Site Design
3112 West Highland Blvd • Milwaukee, Wisconsin 53208 • ph. 414-265-9265 • fax. 414-265-9465 • www.quorumarchitects.com



Townsend: West Elevation Sherman Blvd (Primary Facade)

3360 N Sherman Blvd
Milwaukee, WI 53216

Location of Proposed Insect Screens

Location of Proposed Security Screens



Townsend: West Elevation Sherman Blvd (Primary Facade)

3360 N Sherman Blvd
Milwaukee, WI 53216

Architect's Rendering of the Proposed Screens
Installed



Townsend: South Elevation

3360 N Sherman Blvd
Milwaukee, WI 53216

Location of Proposed **Insect Screens**

Location of Proposed **Security Screens**



Townsend: East Elevation

3360 N Sherman Blvd
Milwaukee, WI 53216

Location of Proposed **Insect Screens**
Location of Proposed **Security Screens**



Townsend: North Elevation

3360 N Sherman Blvd
Milwaukee, WI 53216

Location of Proposed **Insect Screens**
Location of Proposed **Security Screens**



Townsend: West Elevation Sherman Blvd

3360 N Sherman Blvd
Milwaukee, WI 53216

Photograph of Proposed Color and Material Sample



Gordon Solutions

Commercial Construction

NATIVE AMERICAN OWNED AND OPERATED



EBE Certified - MBE Certified – SBE Certified

Transmittal

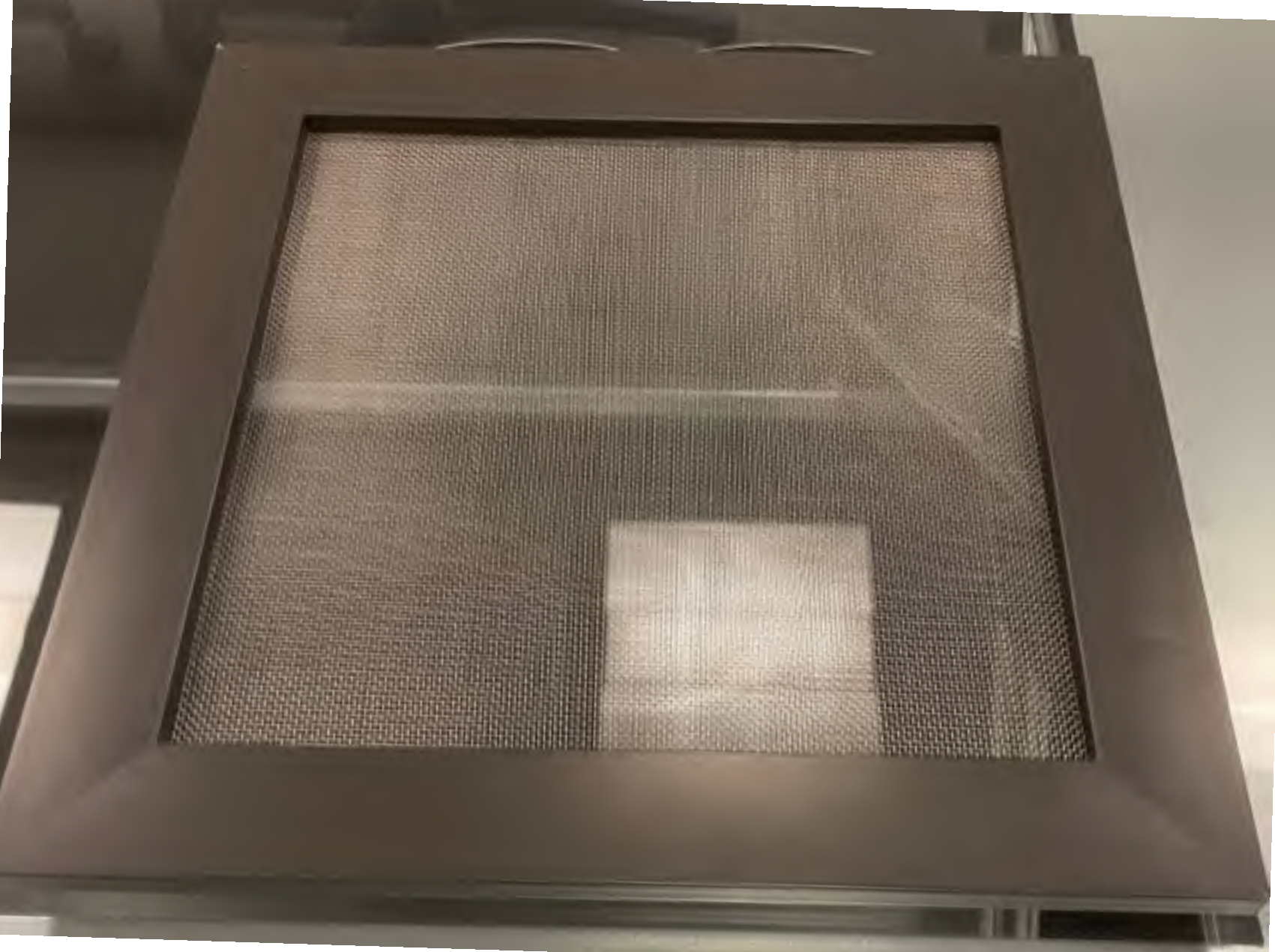
To: Ryan Kaplanek
CC: Emmanuel Perez
From: Gordon Solutions, LLC Date:
5/2/2023
Re: Esser 11 MPS - Townsend and
Washington High Schools

We are sending you:

Material	Brand	Type	Quantity
Physical Sample	Tapco	700 Series	1
Product Drawings	Tapco	700 Series	1

7500 N. Teutonia Ave. Milwaukee, WI 53209

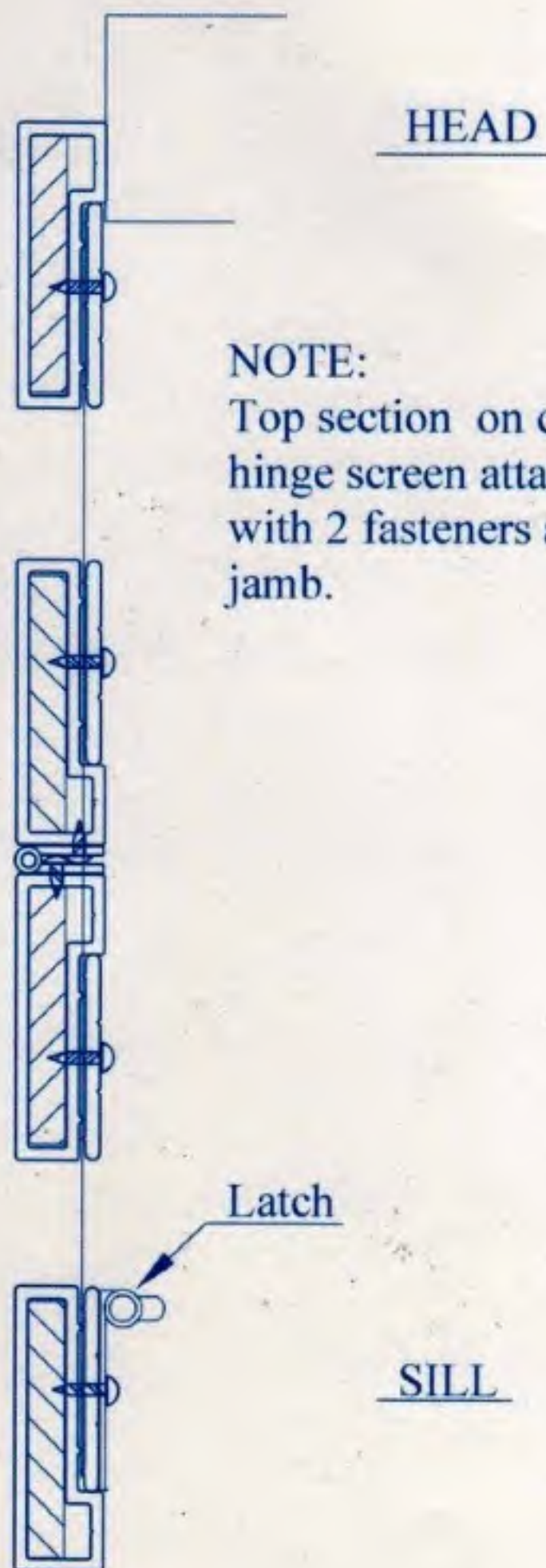
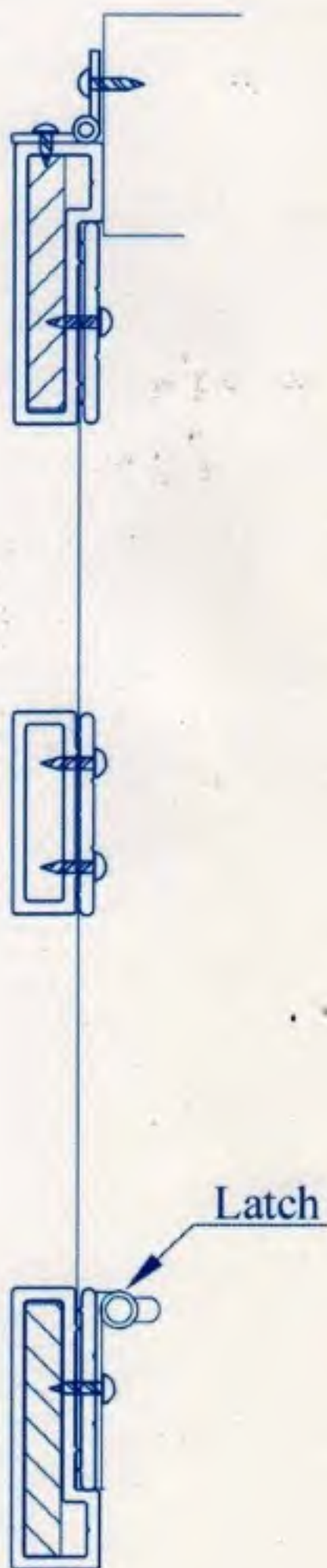
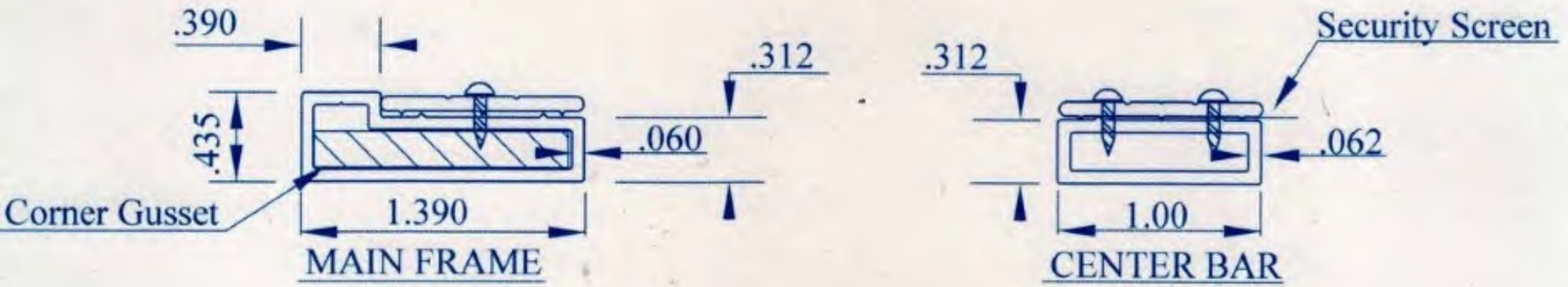
Office: 262-457-7873 Cell: 414-630-4142 Fax: 262-457-7888 Email: info@gordonsolutionsllc.com



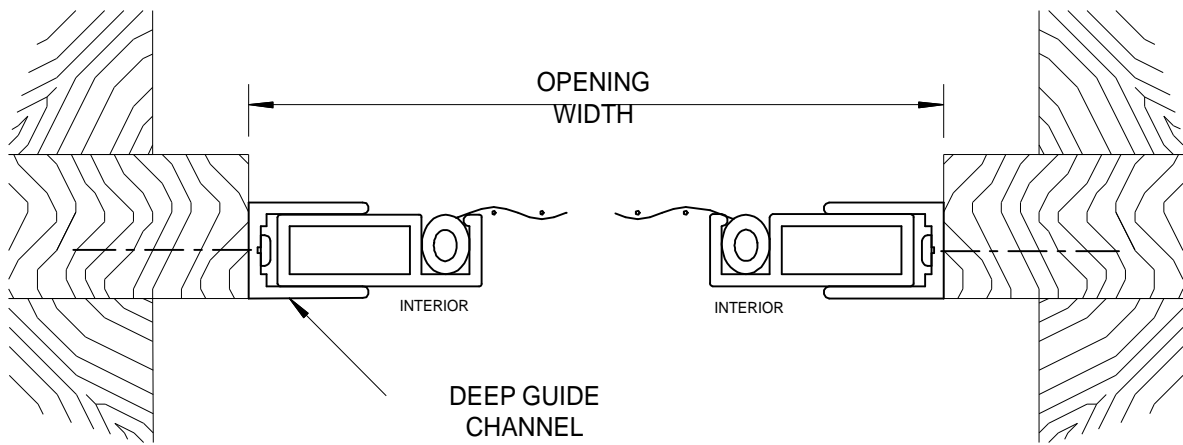


TAPCO, INC.

SERIES # 700



NOTE:
Top section on center
hinge screen attached
with 2 fasteners at each
jamb.



3 Install Detail



PHIFER
INCORPORATED

P. O. Box 1700
Tuscaloosa, AL 35403-1700 USA
Phone: 205-345-2120
Fax: 205-759-4450

PRODUCT DATA SHEET

Product Description:

Stainless Steel Screen, SeeVue, Black Polyester

<u>Property</u>	<u>Test Method</u>	<u>Results</u>
Mesh (ends/inch)	ASTM D 3775	
a) Warp		17.00 – 18.25
b) Fill		17.00 – 18.25
Coated Diameter (in.)	ASTM B 557	.007 - .009
Wire Tensile Strength	ASTM B 557	210ksi – 280ksi
% Elongation	ASTM B 557	1% - 10%
Stiffness (mg)	ASTM D 3656	
a) Warp		1000 - 2600
b) Fill		1000 - 2600
Mesh Weight (oz/yd sq)	ASTM D 3776	6.0 – 8.0
Openness (%)	TMS-TM-009	68 – 76
Fabric Thickness (in.)	ASTM D 1777	.013 - .018

Note: The above information is derived from typical test results. The performance characteristics may vary according to product application, operating conditions, materials applied to or with use.

Approved by: Ryan Fincher

Date: 07/17/2018



Gordon Solutions

Commercial Construction

NATIVE AMERICAN OWNED AND OPERATED



EBE Certified - MBE Certified – SBE Certified

Transmittal

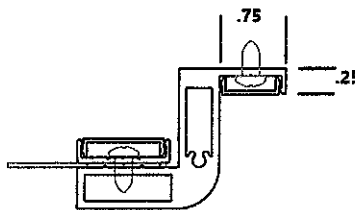
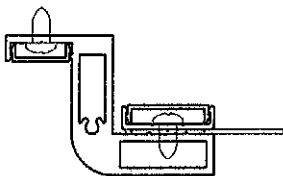
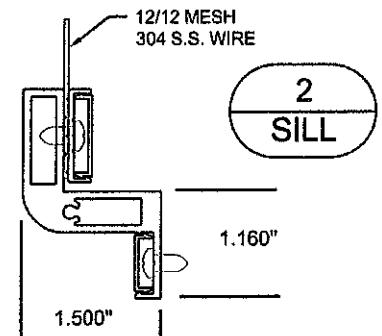
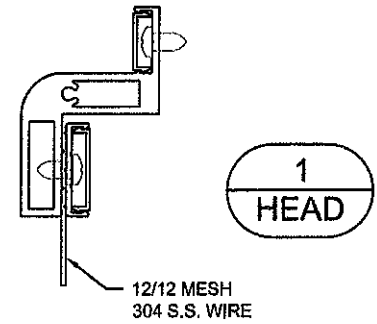
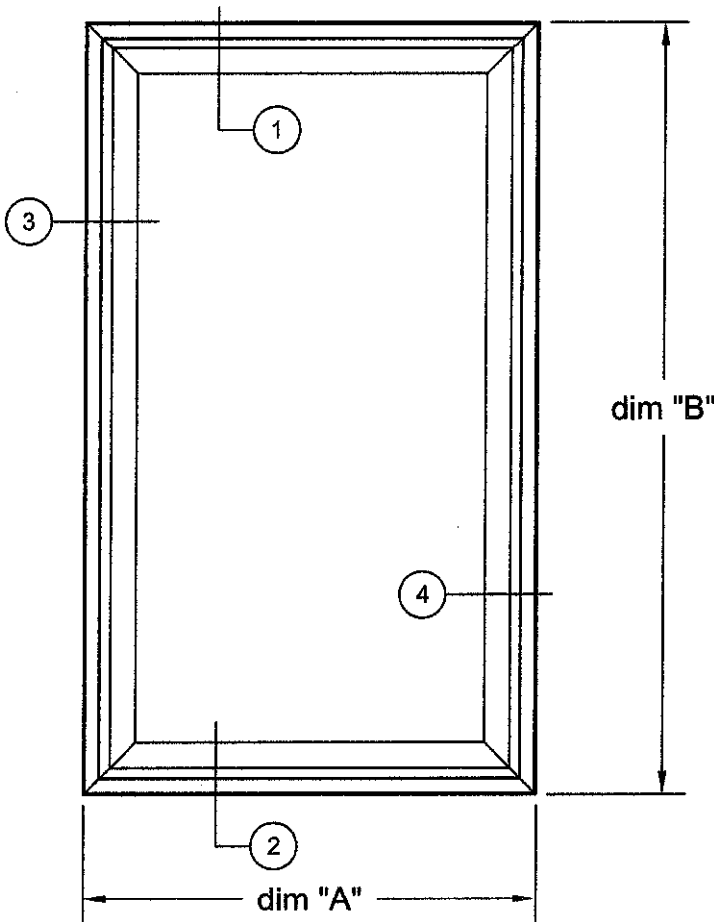
To: Ryan Kaplanek
CC: Emmanuel Perez
From: Gordon Solutions, LLC
Date: 12-21-2022
Re: Esser 11 MPS Multiple Locations

We are sending you:

Material	Brand	Type	Quantity
Physical Sample	Tapco	223 Series	1
Product Data	Tapco	223 Series	1

7500 N. Teutonia Ave. Milwaukee, WI 53209

Office: 262-457-7873 Cell: 414-630-4142 Fax: 262-457-7888 Email: info@gordonsolutionsllc.com



Without Tubing Install

Security Screen Details and Notes

TAPCO Series: #223—Fixed

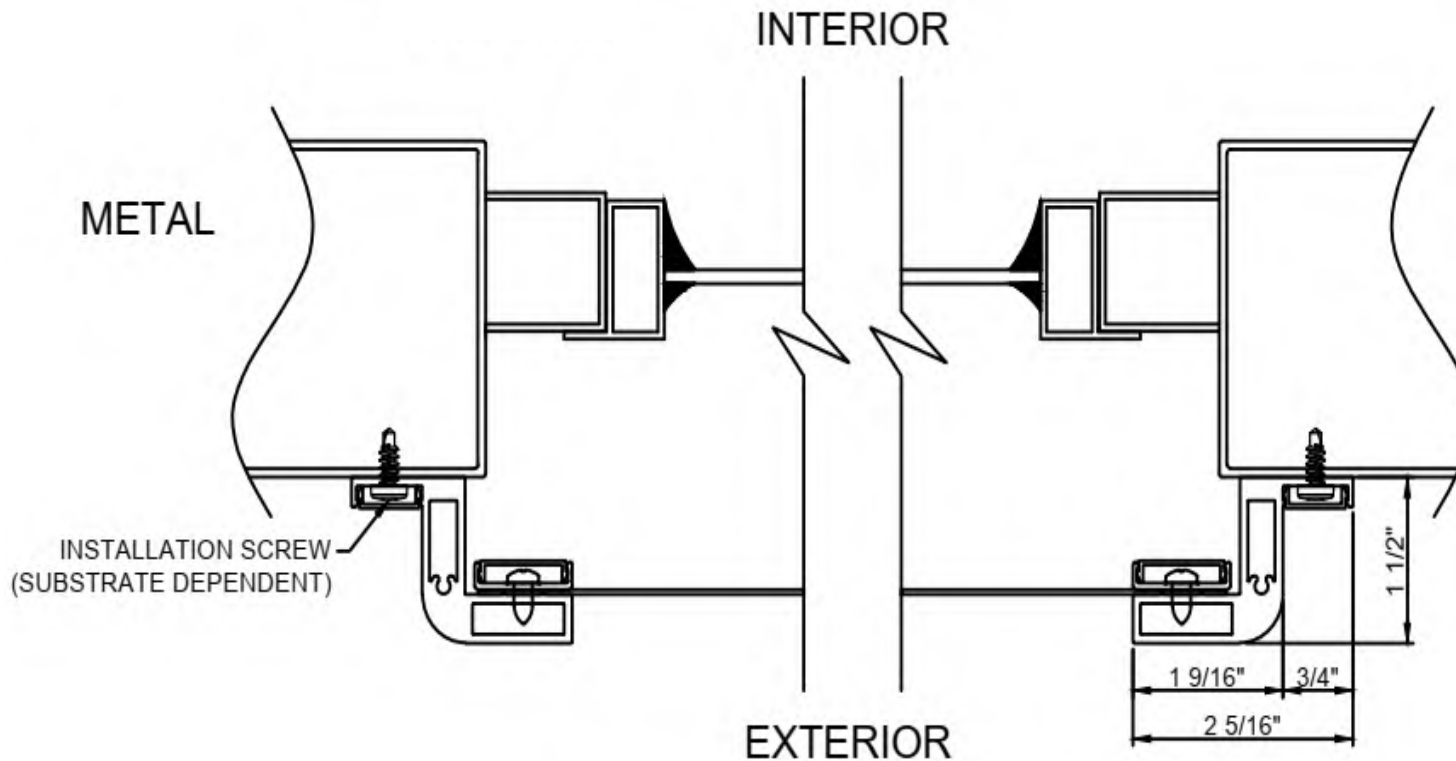
- Frame Color— Per approved color submittal

Wire: .028 SST Mesh

- Wire Color— Black

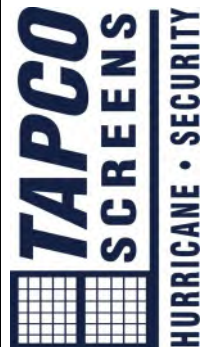
All measurements verified in field

TAPCO #223 SERIES (FIXED) SECURITY SCREEN INSTALLATION DIAGRAM



Schools—Without Tubing Install
Project # - All Projects (as needed)
Location: All Schools (as needed)

Cover Sheet



With Tubing Install

Security Screen Details and Notes

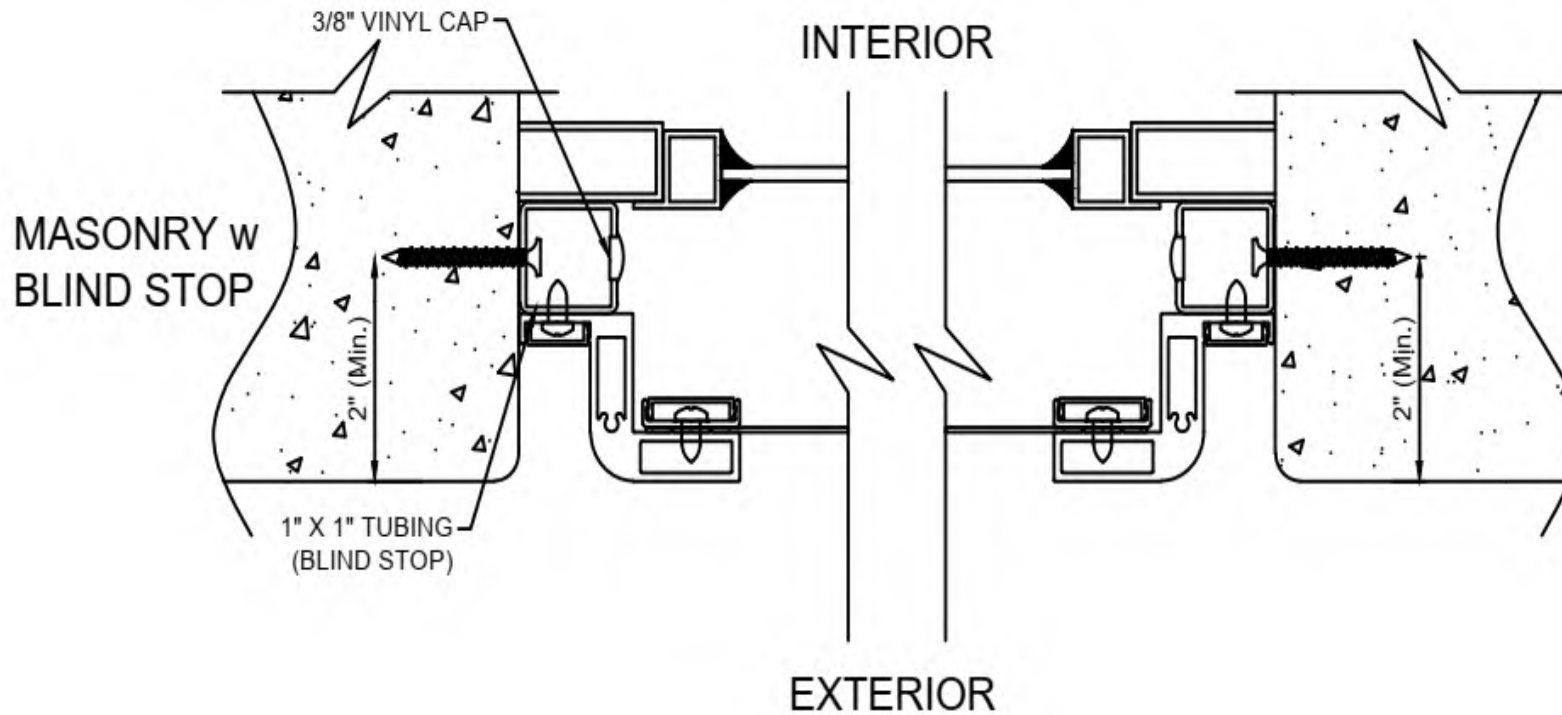
TAPCO Series: #223—Fixed

- Frame Color— Per approved color submittal

Wire: .028 SST Mesh

- Wire Color— Black

All measurements verified in field



Schools—With Tubing Install
Project # - All Projects (as needed)
Location: All Schools (as needed)

Cover Sheet



1813 McCullough Blvd. 38801 ~ Post Office Box 1427 38802 ~ Tupelo, Ms 38802 ~ Phone 800-737-8272 ~ Fax ~ 662-844-8511

SECURITY SCREEN SPECIFICATIONS
#223-SH FIXED SERIES

MATERIALS:

- A. **Main Frame:** Extruded aluminum 6063-T5, 2.260" x 1.50", .080 wall thickness.
- B. **Corner Gussets:** Shall be .270 solid aluminum.
- C. **Center Bar:** Applies where and if needed.
- D. **Wire Mesh:** .035 or .028 Stainless steel wire with 1000 hr powder coat.
- E. **Anchor Bar:** Extruded aluminum 6063-T5, 1" Wide x .060 wall thickness.
with vinyl cover.
- F. **Snap-On Cover:** Extruded aluminum 6063-T5, .614" wide x .040 wall thickness.
To conceal install screws.
- G. **Hinge:** None
- H. **Latch:** None
- I. **Weather Stripping:** None
- J. **Finish:** Mill Finish, Bronze, White, Almond, Special Finish upon request.



SUBMITTAL REVIEW

Project:

Job Number:

Sub:

Submittal Number:

Description:

<p>VJS Review:</p> <div style="border: 1px solid black; padding: 5px;"><p>Project:</p><hr/><p><input type="checkbox"/> REVIEWED <input type="checkbox"/> REVIEWED AS NOTED</p><p><input type="checkbox"/> REVISE & RESUBMIT <input type="checkbox"/> NOT REVIEWED</p><hr/><p>BY DATE</p><p>SPEC SECTION</p></div> <p>THIS SUBMITTAL HAS BEEN REVIEWED FOR GENERAL CONFORMANCE TO THE CONTRACT DOCUMENTS. ALL DIMENSIONS, QUANTITIES, COORDINATION WITH ALL TRADES, AND FIELD VERIFICATION SHALL BE THE RESPONSIBILITY OF THE SUBMITTER. THIS REVIEW SHALL NOT RELIEVE THE SUBMITTER OF RESPONSIBILITY FOR DEVIATIONS FROM REQUIREMENTS OF THE CONTRACT DOCUMENTS NOR FOR ERRORS OR OMISSIONS IN THIS SUBMITTAL. SHOP DRAWINGS ARE <u>NOT</u> PART OF THE CONTRACT DOCUMENTS.</p>	<p>Architect Review:</p>
<p>Engineer Review:</p>	<p>Other Review:</p>



Gordon Solutions

Commercial Construction

NATIVE AMERICAN OWNED AND OPERATED



EBE Certified - MBE Certified – SBE Certified

Transmittal

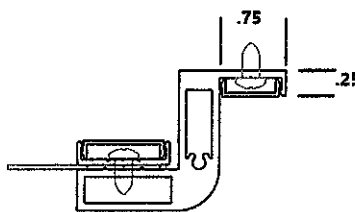
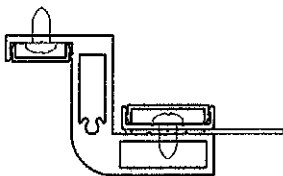
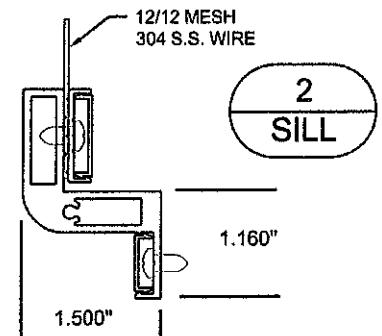
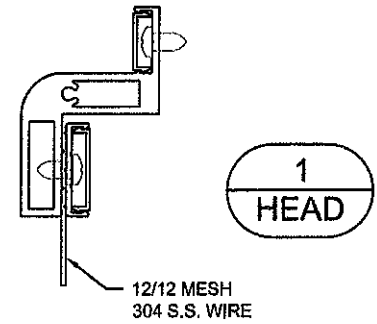
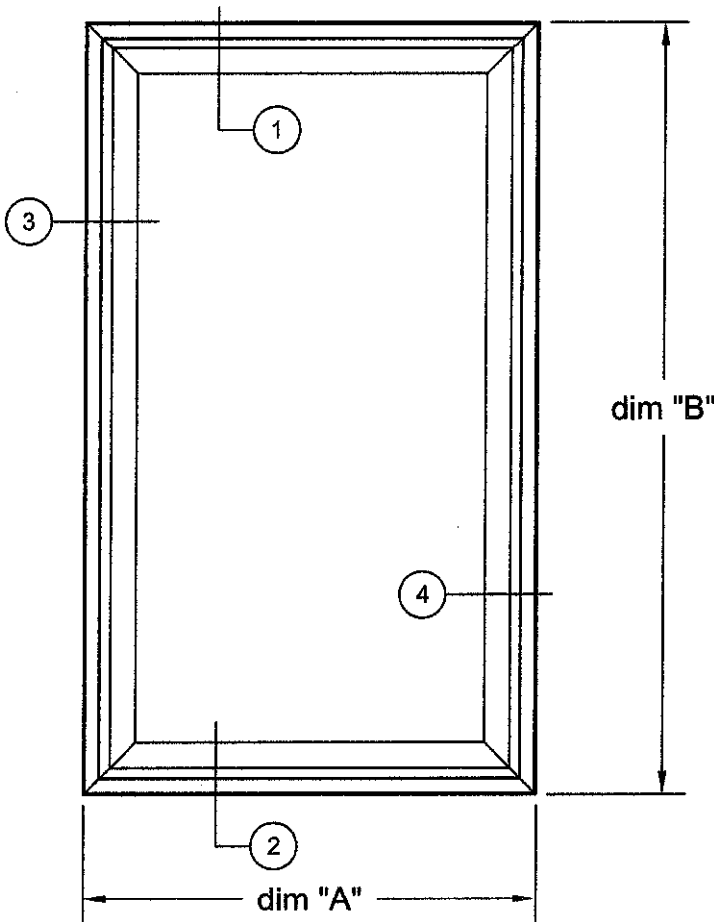
To: Ryan Kaplanek
CC: Emmanuel Perez
From: Gordon Solutions, LLC
Date: 12-21-2022
Re: Esser 11 MPS Multiple Locations

We are sending you:

Material	Brand	Type	Quantity
Physical Sample	Tapco	223 Series	1
Product Data	Tapco	223 Series	1

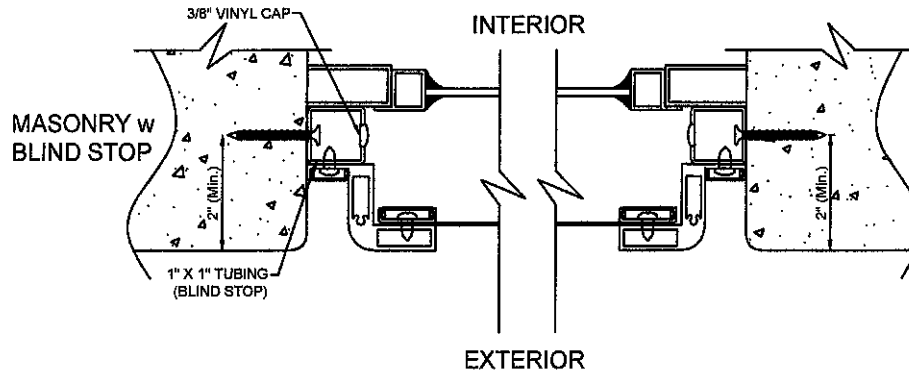
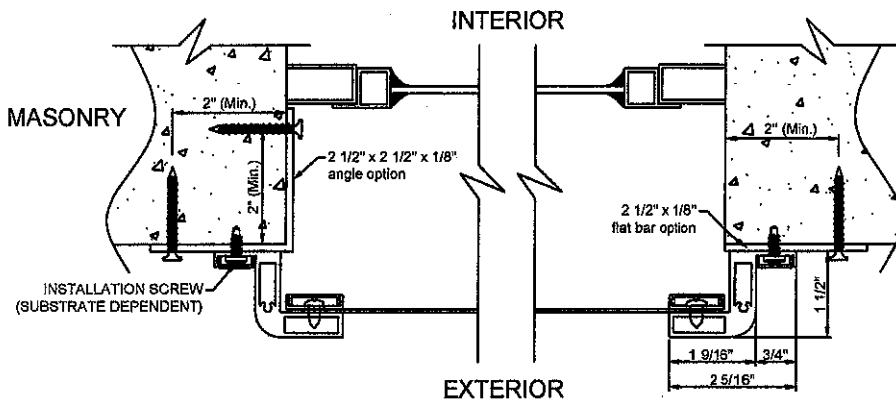
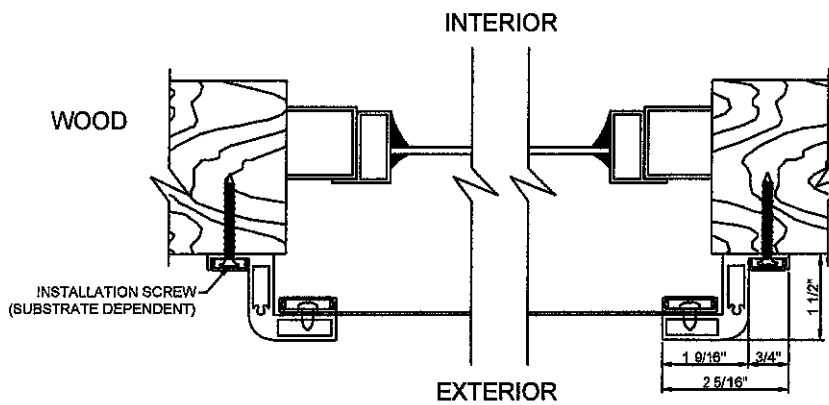
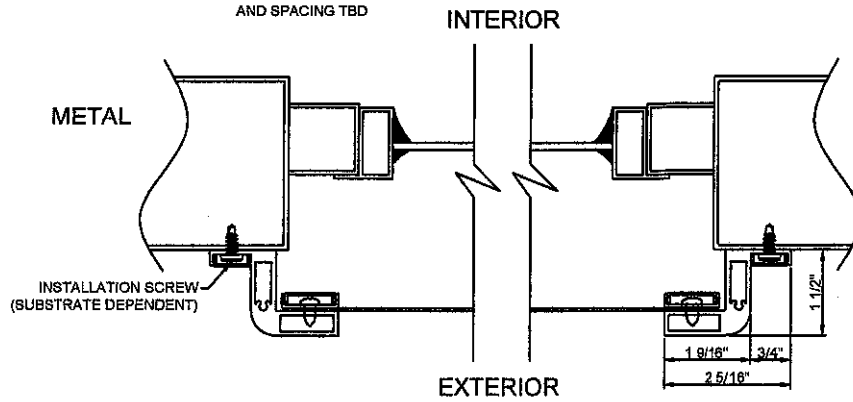
7500 N. Teutonia Ave. Milwaukee, WI 53209

Office: 262-457-7873 Cell: 414-630-4142 Fax: 262-457-7888 Email: info@gordonsolutionsllc.com



TAPCO #223 SERIES (FIXED) SECURITY SCREEN INSTALLATION DIAGRAM

FASTENER - TYPES
AND SPACING TBD





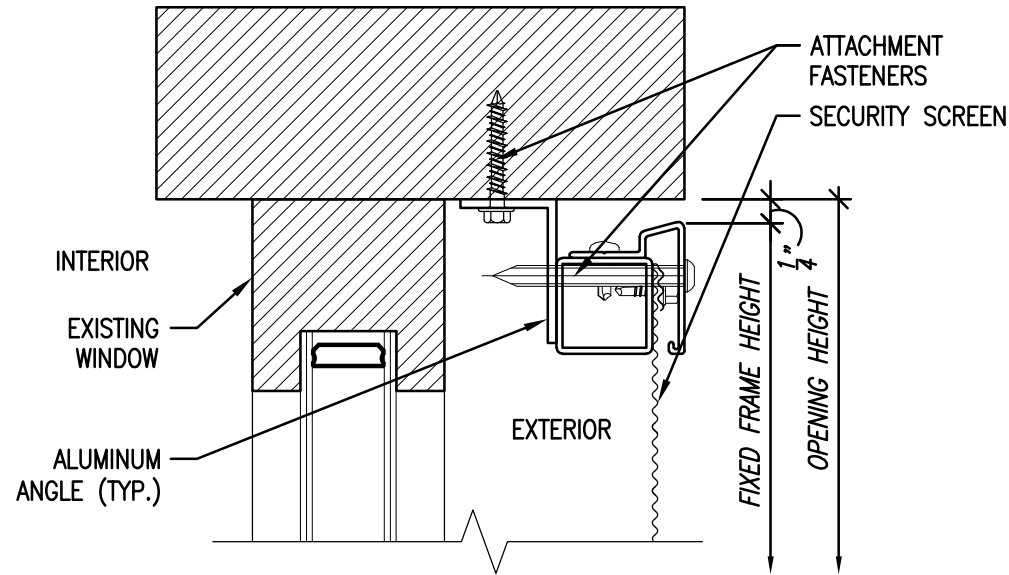
1813 McCullough Blvd. 38801 ~ Post Office Box 1427 38802 ~ Tupelo, Ms 38802 ~ Phone 800-737-8272 ~ Fax ~ 662-844-8511

SECURITY SCREEN SPECIFICATIONS
#223-SH FIXED SERIES

MATERIALS:

- A. **Main Frame:** Extruded aluminum 6063-T5, 2.260" x 1.50", .080 wall thickness.
- B. **Corner Gussets:** Shall be .270 solid aluminum.
- C. **Center Bar:** Applies where and if needed.
- D. **Wire Mesh:** .035 or .028 Stainless steel wire with 1000 hr powder coat.
- E. **Anchor Bar:** Extruded aluminum 6063-T5, 1" Wide x .060 wall thickness.
with vinyl cover.
- F. **Snap-On Cover:** Extruded aluminum 6063-T5, .614" wide x .040 wall thickness.
To conceal install screws.
- G. **Hinge:** None
- H. **Latch:** None
- I. **Weather Stripping:** None
- J. **Finish:** Mill Finish, Bronze, White, Almond, Special Finish upon request.

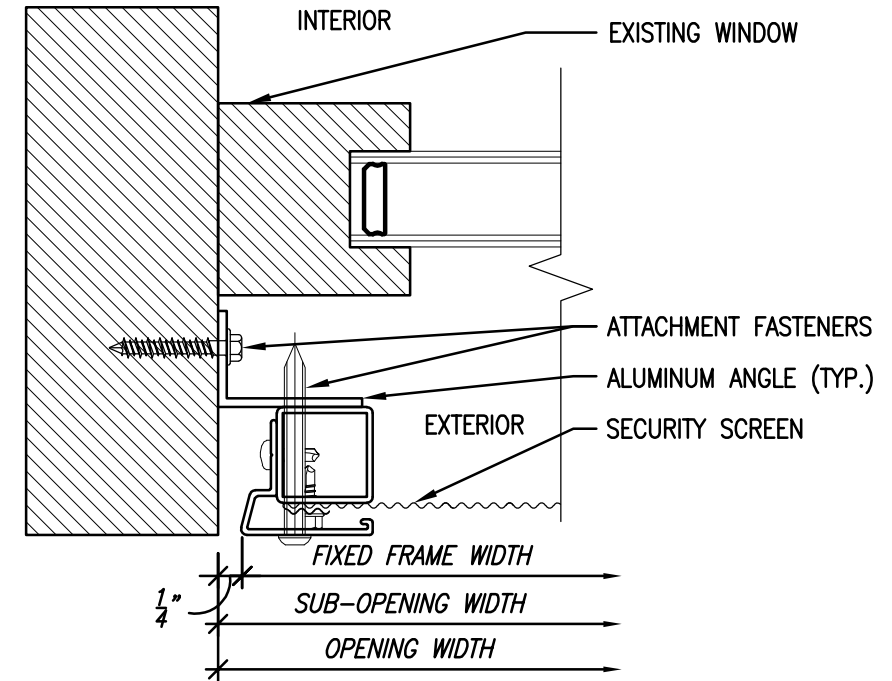
NOTE: REMOVE AND DISPOSE OF ANY EXISTING EXTERIOR INSECT SCREENS OR SECURITY SCREENS BEFORE INSTALLING SCHEDULED SECURITY SCREEN.



SECURITY SCREEN - HEAD DETAIL (REVEAL MOUNT)

SCALE: 6" = 1'-0"

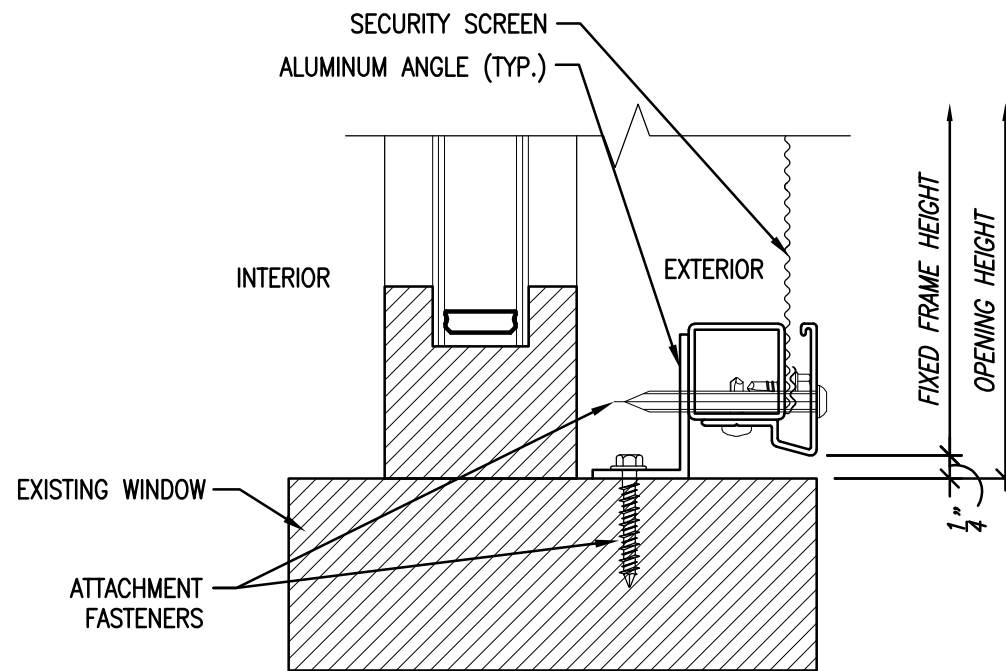
NOTE: REMOVE AND DISPOSE OF ANY EXISTING EXTERIOR INSECT SCREENS OR SECURITY SCREENS BEFORE INSTALLING SCHEDULED SECURITY SCREEN.



SECURITY SCREEN - JAMB DETAIL (REVEAL MOUNT)

SCALE: 6" = 1'-0"

NOTE: REMOVE AND DISPOSE OF ANY EXISTING EXTERIOR INSECT SCREENS OR SECURITY SCREENS BEFORE INSTALLING SCHEDULED SECURITY SCREEN.



SECURITY SCREEN - SILL DETAIL (REVEAL MOUNT)

SCALE: 6" = 1'-0"

Office of Operations
Department of Facilities and
Maintenance Services
Sean Kane - Director
1124 N. 11th Street, Milwaukee, WI 53233
(414) 263-4600 mps.milwaukee.k12.wi.us



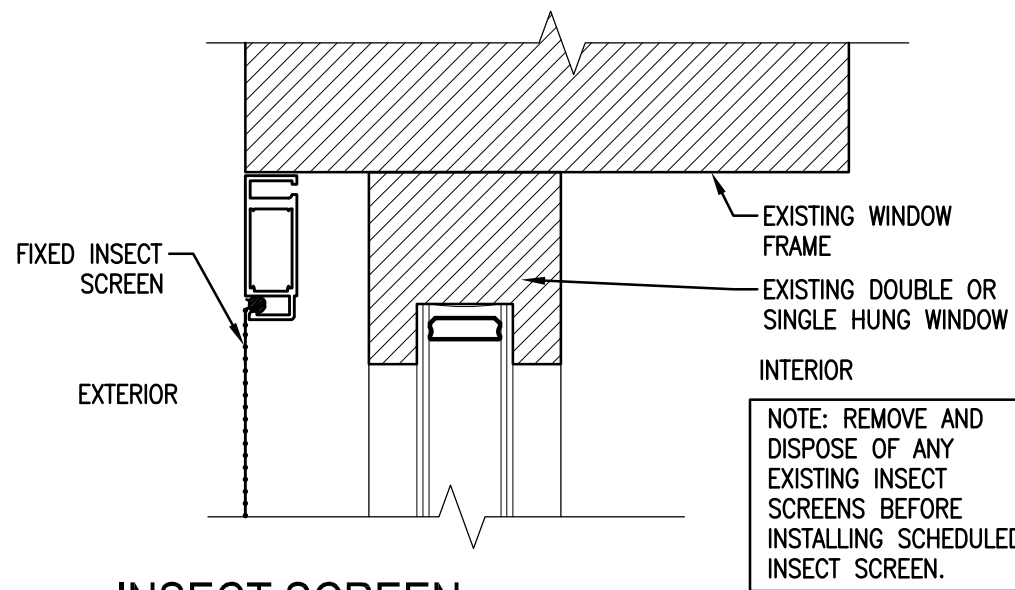
Quorum Architects, Inc.
Quorum Project
Number: 21026.00

Title:	SECURITY SCREEN TYPICAL DETAILS
Project Title:	HPC SUBMISSION
Project Location:	MILWAUKEE, WI
Approved By:	ARCHITECT/ENGINEER OF RECORD
Project Phase:	MPS

REVISIONS	BY

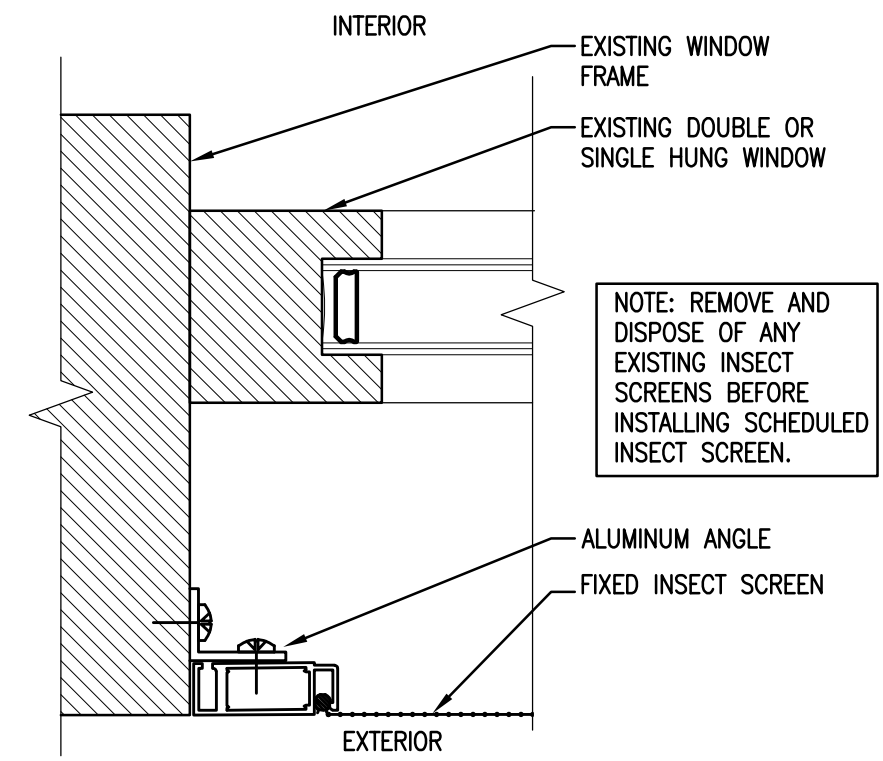
Drawn by: BI
Checked by: JPB
Date: 12-14-22
Scale: As Noted
Site Number:
Project No.:
Sheet Number:

A4.0d



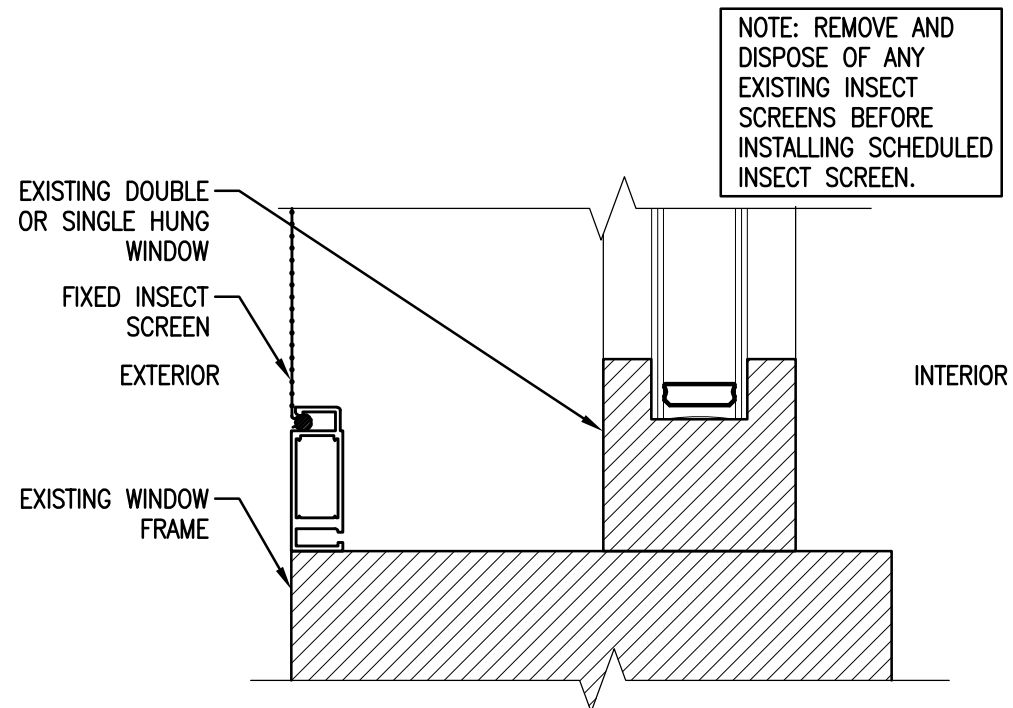
INSECT SCREEN - HEAD DETAIL (DOUBLE & SINGLE-HUNG)

SCALE: 6" = 1'-0"



INSECT SCREEN - JAMB DETAIL (DOUBLE & SINGLE-HUNG)

SCALE: 6" = 1'-0"



INSECT SCREEN - SILL DETAIL (DOUBLE & SINGLE-HUNG)

SCALE: 6" = 1'-0"

Dec 13, 2022 - 11:00am
 Q:\21 Projects\21026-00 MPS ESSER II\CDs\Base Dwgs\0-DETAILS-21026-00.dwg

Office of Operations
 Department of Facilities and
 Maintenance Services
 Sean Kane - Director
 1124 N. 11th Street, Milwaukee, WI 53233
 (414) 263-4600 mps.milwaukee.k12.wi.us



Quorum Architects, Inc.
 Quorum Project
 Number: 21026.00

Title: INSECT SCREEN TYPICAL DETAILS	
Project Title: HPC SUBMISSION	
Project Location: MILWAUKEE, WI	
Approved By: ARCHITECT/ENGINEER OF RECORD	
MPS Project Phase:	
REVISIONS	BY
Drawn by:	BI
Checked by:	JPB
Date:	12-14-22
Scale:	As Noted
Site Number:	
Project No.:	
Sheet Number:	

A4.1d