



1
A10

EXISTING NORTH BROADWAY FACADE

No Scale



UIHLEIN
WILSON
ARCHITECTS

322 East Michigan Street
Milwaukee, WI 53202

telephone | 414.271.8899
facsimile | 414.271.8942
email | office@uihleין-wilson.com

© UIHLEIN WILSON ARCHITECTS, INC. ALL RIGHTS RESERVED

OWNERSHIP OF DOCUMENTS
This document, and the ideas and designs incorporated herein, as an instrument of professional service, is the sole property of Uihlein Wilson Architects, Inc., and is not to be used in whole or in part for any other project or purpose without the expressed written authorization of Uihlein Wilson Architects, Inc.

REVISIONS

No.	Date	Description
-----	------	-------------

PROJECT

Broadway Facade
Renovations
Milwaukee, WI

SHEET

Existing
Perspective

DATE:

May 01, 2017

PROJECT NO.

13-103

A10



**UIHLEIN
WILSON
ARCHITECTS**

322 East Michigan Street
Milwaukee, WI 53202

telephone | 414.271.8899
facsimile | 414.271.8942
email | office@uihleין-wilson.com

© UIHLEIN WILSON ARCHITECTS, INC. ALL RIGHTS RESERVED

OWNERSHIP OF DOCUMENTS
This document, and the ideas and designs incorporated herein, as an instrument of professional service, is the sole property of Uihlein Wilson Architects, Inc., and is not to be used in whole or in part for any other project or purpose without the expressed written authorization of Uihlein Wilson Architects, Inc.

REVISIONS

No.	Date	Description
-----	------	-------------

PROJECT

Broadway Facade
Renovations
Milwaukee, WI

SHEET

Existing
Perspective

DATE:

May 01, 2017

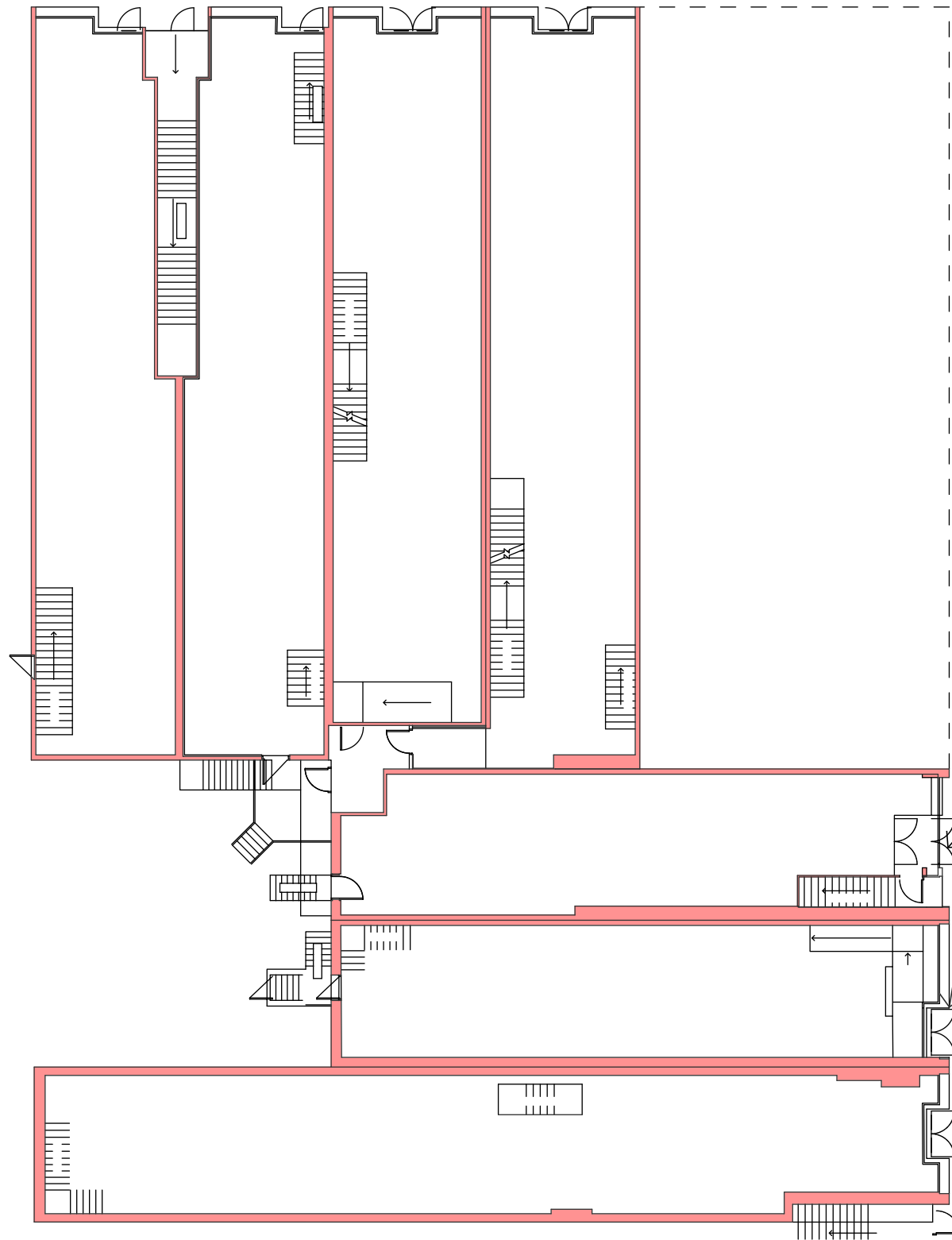
PROJECT NO.

13-103

1 EXISTING NORTH BROADWAY FACADE
A11 No Scale

A11

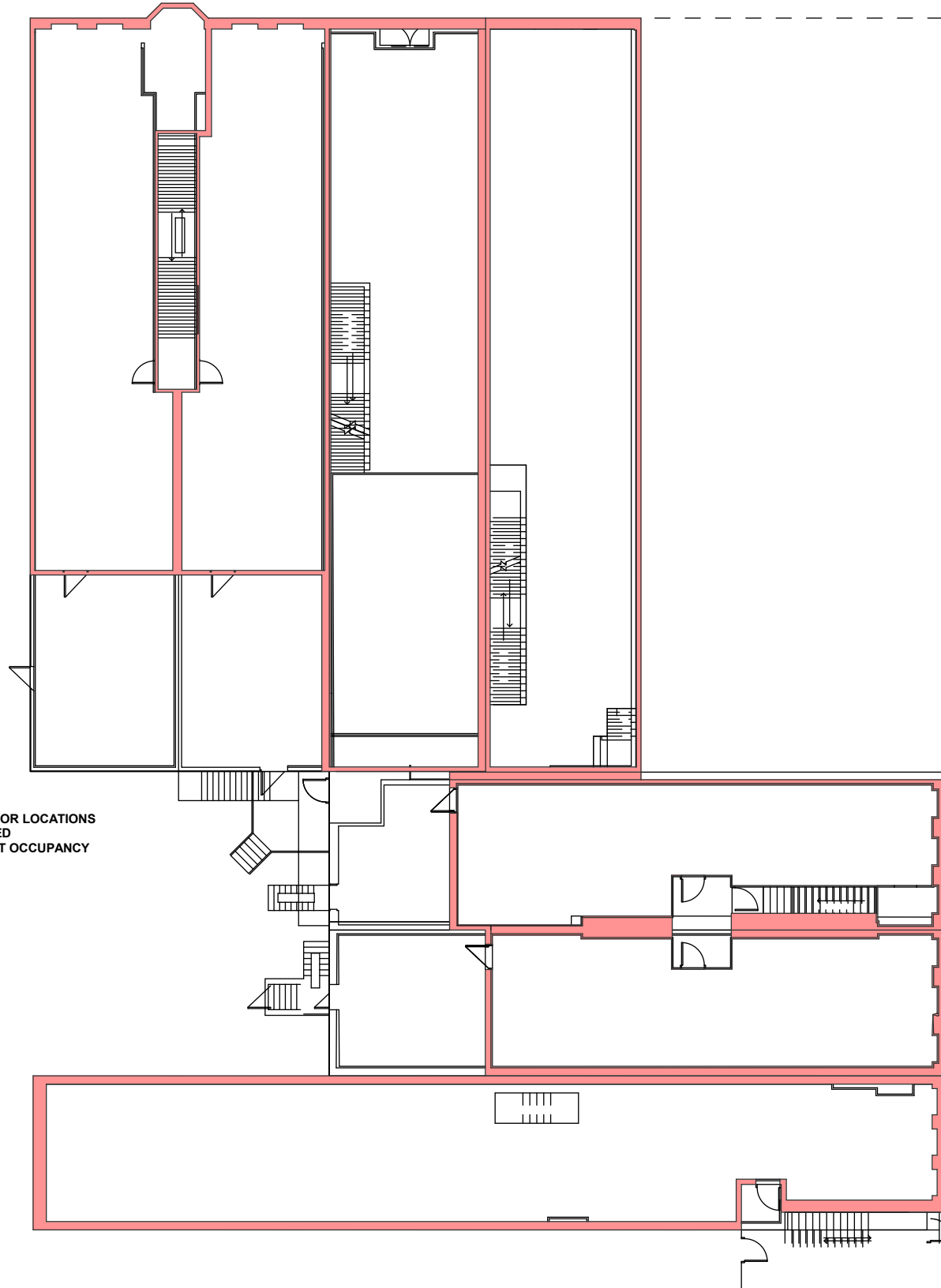
WISCONSIN AVE.



FINAL FACADE DOOR LOCATIONS
TO BE DETERMINED
BASED ON TENANT OCCUPANCY

NORTH BROADWAY

WISCONSIN AVE.



NORTH BROADWAY

1 FIRST FLOOR PLAN
A12 Scale: 1"=20'-0"

2 SECOND FLOOR PLAN
A12 Scale: 1"=20'-0"



**UIHLEIN
WILSON**
ARCHITECTS

322 East Michigan Street
Milwaukee, WI 53202

telephone | 414.271.8899
facsimile | 414.271.8942
email | office@uihleין-wilson.com

© UIHLEIN WILSON ARCHITECTS, INC. ALL RIGHTS RESERVED

OWNERSHIP OF DOCUMENTS
This document, and the ideas and designs incorporated herein, as an instrument of professional service, is the sole property of Uihlein Wilson Architects, Inc., and is not to be used in whole or in part for any other project or purpose without the expressed written authorization of Uihlein Wilson Architects, Inc.

REVISIONS

No.	Date	Description
-----	------	-------------

PROJECT

Broadway Facade
Renovations
Milwaukee, WI

SHEET

Floor Plans

DATE:

May 01, 2017

PROJECT NO.

13-103

A12



UIHLEIN WILSON ARCHITECTS

322 East Michigan Street
Milwaukee, WI 53202

telephone | 414.271.8899
facsimile | 414.271.8942
email | office@uihleין-wilson.com

© UIHLEIN WILSON ARCHITECTS, INC. ALL RIGHTS RESERVED

OWNERSHIP OF DOCUMENTS
This document, and the ideas and designs incorporated herein, as an instrument of professional service, is the sole property of Uihlein Wilson Architects, Inc., and is not to be used in whole or in part for any other project or purpose without the expressed written authorization of Uihlein Wilson Architects, Inc.

REVISIONS

No.	Date	Description
-----	------	-------------

PROJECT

Broadway Facade
Renovations
Milwaukee, WI

SHEET
Elevation
Detail

DATE:
May 01, 2017

PROJECT NO.
13-103

A20



1 EAST ELEVATION - FROM BROADWAY
A20 Scale: 1/8"=1'-0"



**UIHLEIN
WILSON**
ARCHITECTS

322 East Michigan Street
Milwaukee, WI 53202

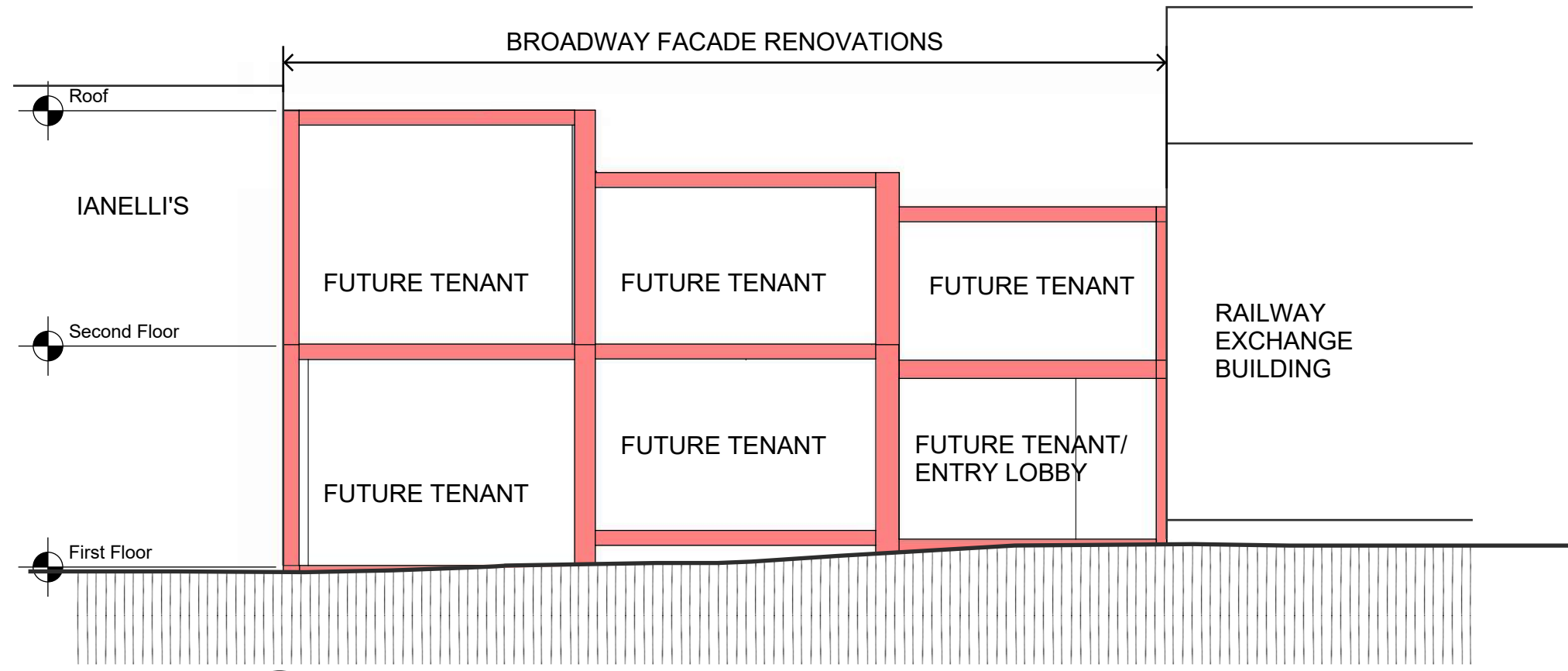
telephone | 414.271.8899
facsimile | 414.271.8942
email | office@uihleין-wilson.com

© UIHLEIN WILSON ARCHITECTS, INC. ALL RIGHTS RESERVED

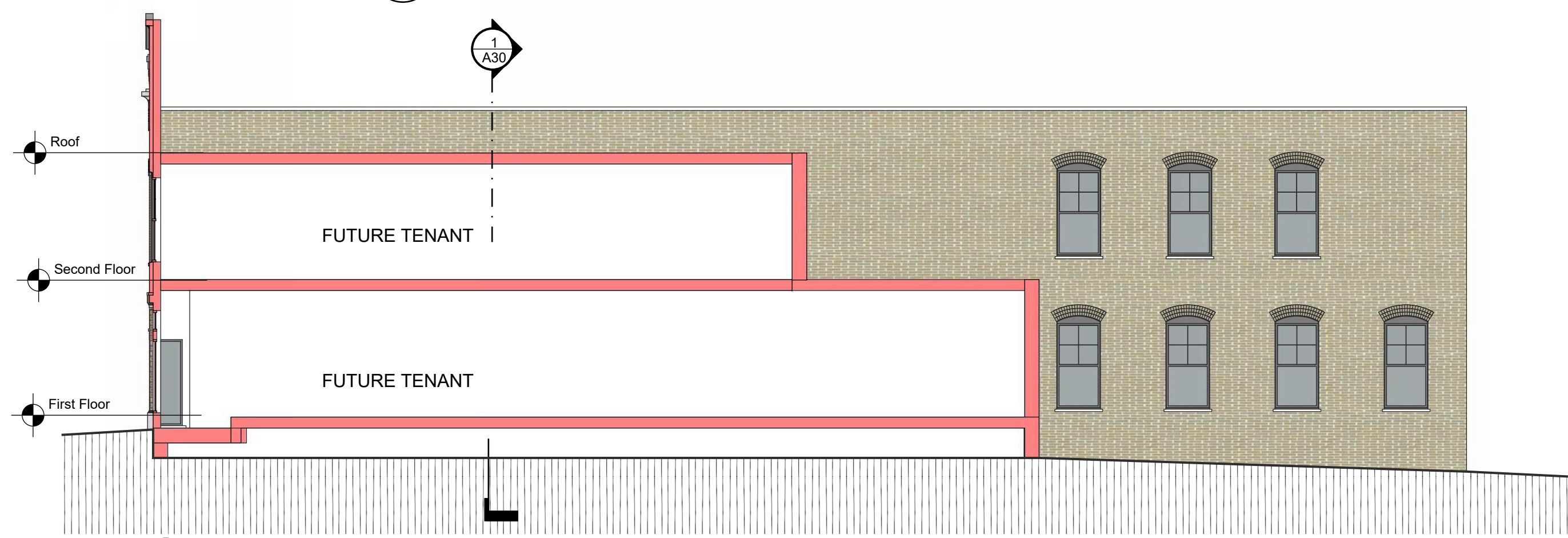
OWNERSHIP OF DOCUMENTS
This document, and the ideas and designs incorporated herein, as an instrument of professional service, is the sole property of Uihlein Wilson Architects, Inc., and is not to be used in whole or in part for any other project or purpose without the expressed written authorization of Uihlein Wilson Architects, Inc.

REVISIONS

No.	Date	Description
-----	------	-------------



1 NORTH-SOUTH SECTION- FROM BROADWAY
A30 Scale: 1"=10'-0"



2 EAST-WEST SECTION FROM NORTH
A30 Scale: 1"=10'-0"

PROJECT

Broadway Facade
Renovations
Milwaukee, WI

SHEET

Building
Sections

DATE:

May 01, 2017

PROJECT NO.

13-103

A30



**UIHLEIN
WILSON
ARCHITECTS**

322 East Michigan Street
Milwaukee, WI 53202

telephone | 414.271.8899
facsimile | 414.271.8942
email | office@uihleין-wilson.com

© UIHLEIN WILSON ARCHITECTS, INC. ALL RIGHTS RESERVED

OWNERSHIP OF DOCUMENTS
This document, and the ideas and designs incorporated herein, as an instrument of professional service, is the sole property of Uihlein Wilson Architects, Inc., and is not to be used in whole or in part for any other project or purpose without the expressed written authorization of Uihlein Wilson Architects, Inc.

REVISIONS

No.	Date	Description
-----	------	-------------

PROJECT

Broadway Facade
Renovations
Milwaukee, WI

SHEET

Perspective

DATE:

May 01, 2017

PROJECT NO.

13-103

A31

1 VIEW FROM SOUTH - LOOKING DOWN BROADWAY
A31 No Scale



UIHLEIN WILSON ARCHITECTS

322 East Michigan Street
Milwaukee, WI 53202

telephone | 414.271.8899
facsimile | 414.271.8942
email | office@uihleין-wilson.com

© UIHLEIN WILSON ARCHITECTS, INC. ALL RIGHTS RESERVED

OWNERSHIP OF DOCUMENTS
This document, and the ideas and designs incorporated herein, as an instrument of professional service, is the sole property of Uihlein Wilson Architects, Inc., and is not to be used in whole or in part for any other project or purpose without the expressed written authorization of Uihlein Wilson Architects, Inc.

REVISIONS

No.	Date	Description



PROJECT

Broadway Facade
Renovations
Milwaukee, WI

SHEET

Perspective

DATE:

May 01, 2017

PROJECT NO.

13-103

A32

1 VIEW FROM SOUTH - LOOKING DOWN BROADWAY
A32 No Scale